



**BOEING**  
707  
**PARTS CATALOG (MAINTENANCE)**

CHAPTER 30  
ICE AND RAIN PROTECTION

TABLE OF CONTENTS

SECTION	FIGURE
30-01 WING ANTI-ICING	
DUCT INSTL, BODY ANTI-ICING CROSSOVER . . . . .	27
DUCT INSTL, BODY BUTTOCK LINE 56.45 TO FRONT SPAR STATION 382.66 WING LEADING EDGE . . . . .	26
THERMAL ANTI-ICING. . . . .	26
DUCT INSTL, FRONT SPAR STATION 416 TO 683 WING LEADING EDGE THERMAL ANTI-ICING. . . . .	18
DUCT INSTL, FRONT SPAR STATION 422 TO 666 THERMAL ANTI-ICING. . . . .	19
DUCT INSTL, INBOARD STRUT AIR CONDITIONING AND WING THERMAL ANTI-ICING LH . . . . .	11
DUCT INSTL, INBOARD STRUT AIR CONDITIONING AND WING THERMAL ANTI-ICING RH . . . . .	11
DUCT INSTL, OUTBOARD STRUT AIR CONDITIONING AND WING THERMAL ANTI-ICING LH. . . . .	5
DUCT INSTL, OUTBOARD STRUT AIR CONDITIONING AND WING THERMAL ANTI-ICING RH. . . . .	5
DUCT INSTL, WING LEADING EDGE THERMAL ANTI-ICING . . . . .	16
SPAR INSTL, INBOARD NACELLE STRUT MID . . . . .	13
SPAR INSTL, OUTBOARD NACELLE STRUT MID. . . . .	7
30-02 EMPENNAGE DEICING	
STRUCTURE INSTL, EMPENNAGE DEICE CONTROL . . . . .	1
30-03 ICE DETECTOR AND CONTROLS	
MODULE INSTL, P13 PILOTS OVERHEAD . . . . .	38
MODULE INSTL, P13 PILOTS OVERHEAD . . . . .	39
PANEL INSTL, FLIGHT ENGINEERS LOWER . . . . .	7K
SHIELD ASSY, STATION 335 J27 ELECTRICAL EQUIPMENT . . . . .	6D
SHIELD ASSY, STATION 336 J4 RELAY . . . . .	6
30-04 WINDSHIELD	
BUNDLE ASSY, NO. 2 SLIDING WINDOW ANTI-ICE ELECTRICAL . . . . .	3
PANEL INSTL, STATION 344 TO 360 TRANSFORMER . . . . .	5
SWITCH INSTL, NO. 2 WINDOW HEAT CONTROL . . . . .	4A
SWITCH INSTL, NO. 3 AND 5 NESA WINDOWS. . . . .	4
SYSTEM INSTL, RAIN REPELLENT. . . . .	10
WIPER INSTL, WINDSHIELD LH. . . . .	1
WIPER INSTL, WINDSHIELD RH. . . . .	1
WIRE ASSY, CAPTAIN AND FIRST OFFICER NO. 2 WINDOW ELECTRICAL PROVISIONS . . . . .	3

**BOEING** *707*  
*Intercontinental*   
**PARTS CATALOG**

**SECTION 01**  
**WING ANTI-ICING**

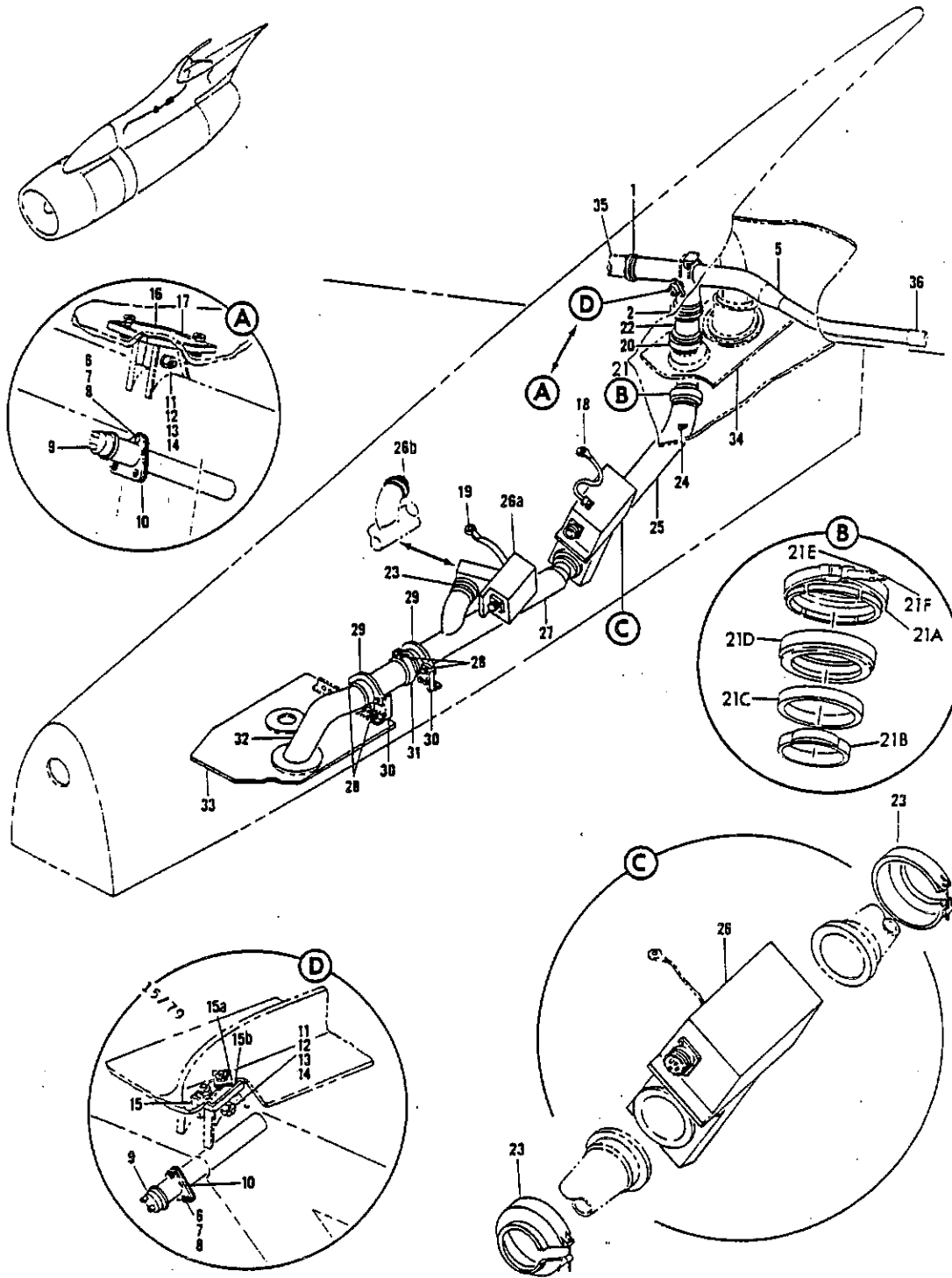


FIGURE 5. DUCT INSTL, OUTBOARD STRUT AIR CONDITIONING AND WING THERMAL ANTI-ICING  
 (ICE AND RAIN PROTECTION ONLY)



PARTS CATALOG

FIGURE & ITEM NO.	MANUFACTURER'S PART NUMBER	NOMENCLATURE	EFF FROM TO	UNITS PER ASSY
5	65-11897-25	DUCT INSTL, OUTBOARD STRUT AIR CONDITIONING AND WING. THERMAL ANTI-ICING LH (ICE AND RAIN PROTECTION ONLY) (SEE 54-1, FIG. 6A, ITEM 18, 54-1, FIG. 6B, ITEM 14 AND 54-1, FIG. 6C, ITEM 19)		RF
	65-11897-26	DUCT INSTL, OUTBOARD STRUT AIR CONDITIONING AND WING. THERMAL ANTI-ICING RH (ICE AND RAIN PROTECTION ONLY) (SEE 54-1, FIG. 6A, ITEM 18, 54-1, FIG. 6B, ITEM 14 AND 54-1, FIG. 6C, ITEM 19)		RF
1	BACC10DP250	• COUPLING. . . . .		1
2	BACC10DP300	• COUPLING. . . . .		1
5	65-21903-21	• DUCT ASSY, OUTBOARD STRUT THERMAL ANTI-ICING (LH. ONLY)		1
5	65-21903-24	• DUCT ASSY, (RH ONLY). . . . .		1
6	NAS603-8	• SCREW . . . . .		3
7	AN960-10L	• WASHER. . . . .		3
8	NAS679A3W	• NUT . . . . .		3
9	10-3266	• SWITCH ASSY, TEMPERATURE INDICATOR. . . . .		1
10	60-4914	• GASKET, WING ANTI-ICING THERMOSWITCH SUPPORT. . . . .		1
11	NAS1104-11W	• BOLT. . . . .		1
12	AN960-416	• WASHER. . . . .		1
13	NAS679A4W	• NUT . . . . .		1
14	NAS75-4-019	• BUSHING . . . . .		1
15	60-4916-3005	• CLIP, OUTBOARD THERMAL ANTI-ICING DUCT SUPPORT (LH. ONLY)		1
		ATTACHING PARTS		
	NAS1103-12W	• BOLT. . . . .		1
	NAS1103-8W	• BOLT. . . . .		1
	60-4916-3006	• FILLER, OUTBOARD THERMAL ANTI-ICING DUCT SUPPORT CLIP RADIUS		1
	AN960-10	• WASHER. . . . .		1
	AN960D10	• WASHER. . . . .		1
	NAS679A3W	• NUT . . . . .		2
15A	66-20364-4	• STRIP, WING THERMAL ANTI-ICING SUPPORT TEE RUB. (LH ONLY)		1
15B	66-20364-3	• STRIP, WING THERMAL ANTI-ICING SUPPORT TEE RUB. (LH ONLY)		1
16	60-4916-3008	• TEE, SUPPORT (RH ONLY). . . . .		1
		ATTACHING PARTS		
	NAS1103-8W	• BOLT. . . . .		2
	AN960-10	• WASHER. . . . .		2
	NAS679A3W	• NUT . . . . .		2
17	66-20364-2	• STRIP, WING THERMAL ANTI-ICING SUPPORT TEE RUB. (RH ONLY)		1
18	MS25083-1BBB	• JUMPER ASSY . . . . .		1
19	MS25083-1BB6	• JUMPER ASSY . . . . .		1
		ATTACHING PARTS		
	NAS603-10	• SCREW . . . . .		4
	AN960C10L	• WASHER. . . . .		4
	NAS679A3W	• NUT . . . . .		4
20	BACC10BN388LSH	• CLAMP . . . . .		1
21	CF15-300	• CLAMP ASSY, FLEXIBLE (V98625) . . . . .		1
M 21A	50880-300	• COUPLING, (V98625). . . . .		1
M 21B	24170-300	• RETAINER ASSY, (V98625) . . . . .		1
M 21C	17351-300	• RING, (V98625). . . . .		1
M 21D	24098-300	• SLEEVE, (V98625). . . . .		1
M 21E	57979-4	• NUT, (V98625) . . . . .		1
M 21F	18289-75L	• BOLT, (V98625). . . . .		1
22	69-35053-4	• DUCT ASSY, THERMAL ANTI-ICING . . . . .		1
23	BACC10DP250	• COUPLING. . . . .		3
24	MS28034-1	• BULB. . . . .		1
25	65-42001-1	• DUCT ASSY, NACELLE STRUT THERMAL ANTI-ICING SYSTEM. . . . .		1
26	10-3291	• VALVE, 2-1/2 IN. DIA AIR SHUTOFF. . . . .		1
26A	10-3291	• VALVE, 2-1/2 IN. DIA AIR SHUTOFF. . . . .		1
27	65-42001-9	• DUCT ASSY, NACELLE STRUT THERMAL ANTI-ICING SYSTEM. . . . .		1
28	NAS1103-1W	• BOLT. . . . .		4
29	66-1819	• CLAMP ASSY, DUCT SUPPORT. . . . .		2
30	66-1818-2	• BRACKET ASSY, DUCT SUPPORT. . . . .		2
		ATTACHING PARTS		
	NAS1103-1W	• BOLT. . . . .		10
	AN960-10L	• WASHER. . . . .		10
	NAS679A3W	• NUT . . . . .		10

MISSING ITEM NUMBERS ARE NOT APPLICABLE



**PARTS CATALOG**

FIGURE & ITEM NO.	MANUFACTURER'S PART NUMBER	1 2 3 4 5 6 7	NOMENCLATURE	EFF FROM TO	UNITS
					PER ASSY
5	31	BACC10DP300	. CLAMP . . . . .		1
	32	65-11897-23	. DUCT ASSY, OUTBOARD STRUT WING THERMAL ANTI-ICING . . . . .		1
		69-10830-15	. DOOR INSTL, NACELLE LOWER SPAR. . . . .		1
	33	69-10830-17	. DOOR ASSY, NACELLE LOWER SPAR . . . . .		1
			ATTACHING PARTS		
		NAS1103-1W	. . SCREW . . . . .		26
		NAS623-3-6	. . SCREW . . . . .		64
			. FOR REFERENCE TO OTHER DUCT DETAILS, SEE NHA. . . . .		
	34		SPAR INSTL, OUTBOARD NACELLE STRUT MID (FOR REF SEE . . . . . FIG. 7)		RF
	35		DUCT INSTL, FRONT SPAR STATION 416 TO 683 WING LEADING EDGE THERMAL ANTI-ICING (FOR REF SEE FIG. 1B)		RF
36		DUCT INSTL, FRONT SPAR STATION 745 TO 960 WING LEADING EDGE THERMAL ANTI-ICING (ICE AND RAIN PROTECTION ONLY) (FOR REF SEE FIG. 16)		RF	
MISSING ITEM NUMBERS ARE NOT APPLICABLE					

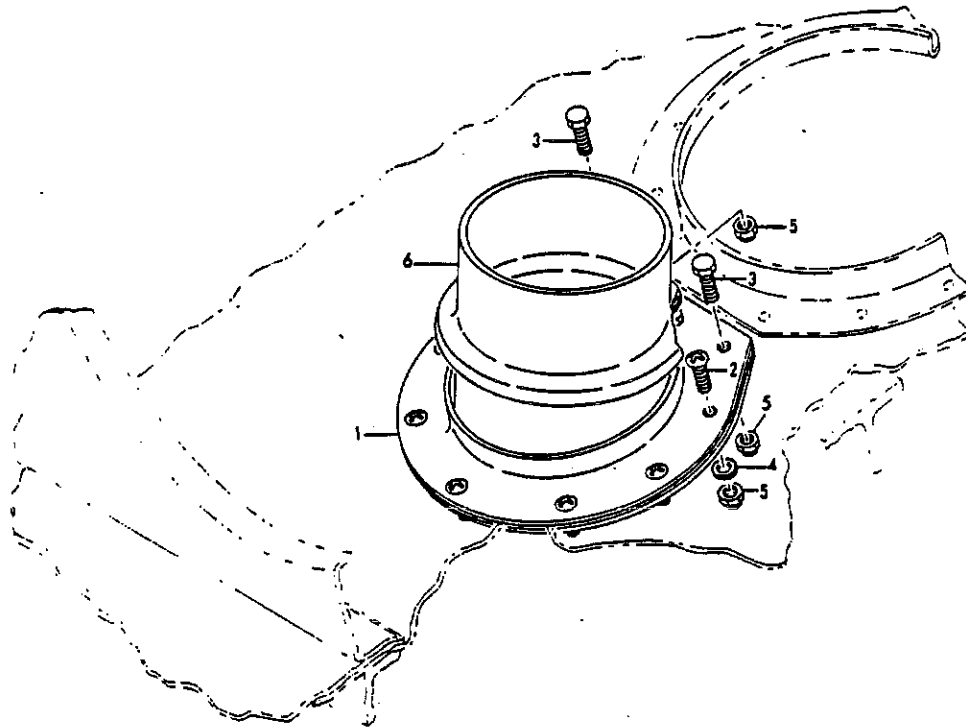
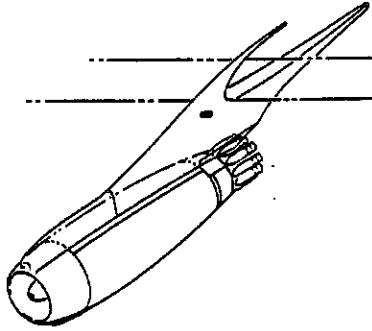


FIGURE 7. SPAR INSTL, OUTBOARD NACELLE STRUT MID (ICE AND RAIN PROTECTION ONLY)



**PARTS CATALOG**

FIGURE & ITEM NO.	MANUFACTURER'S PART NUMBER	NOMENCLATURE							EFF FROM TO	UNITS PER ASSY
		1	2	3	4	5	6	7		
7	64-1062-3040	SPAR INSTL, OUTBOARD NACELLE STRUT MID (ICE AND RAIN. . PROTECTION ONLY) (SEE 54-1, FIG. 9, ITEM 45)								RF
1	6-83688	. FLANGE, OUTBOARD STRUT THERMAL ANTI-ICING DUCT SEAL . ATTACHING PARTS								1
2	NAS221-10	. SCREW . . . . .								7
3	NAS1103-6W	. BOLT . . . . .								3
5	NAS679A3W	. NUT . . . . .								10
6	9-66517-1	. SEAL, THERMAL ANTI-ICING OUTBOARD STRUT DUCT. . . . . . FOR REFERENCE TO OTHER SPAR DETAILS, SEE NHA. . . . .								1

MISSING ITEM NUMBERS ARE NOT APPLICABLE

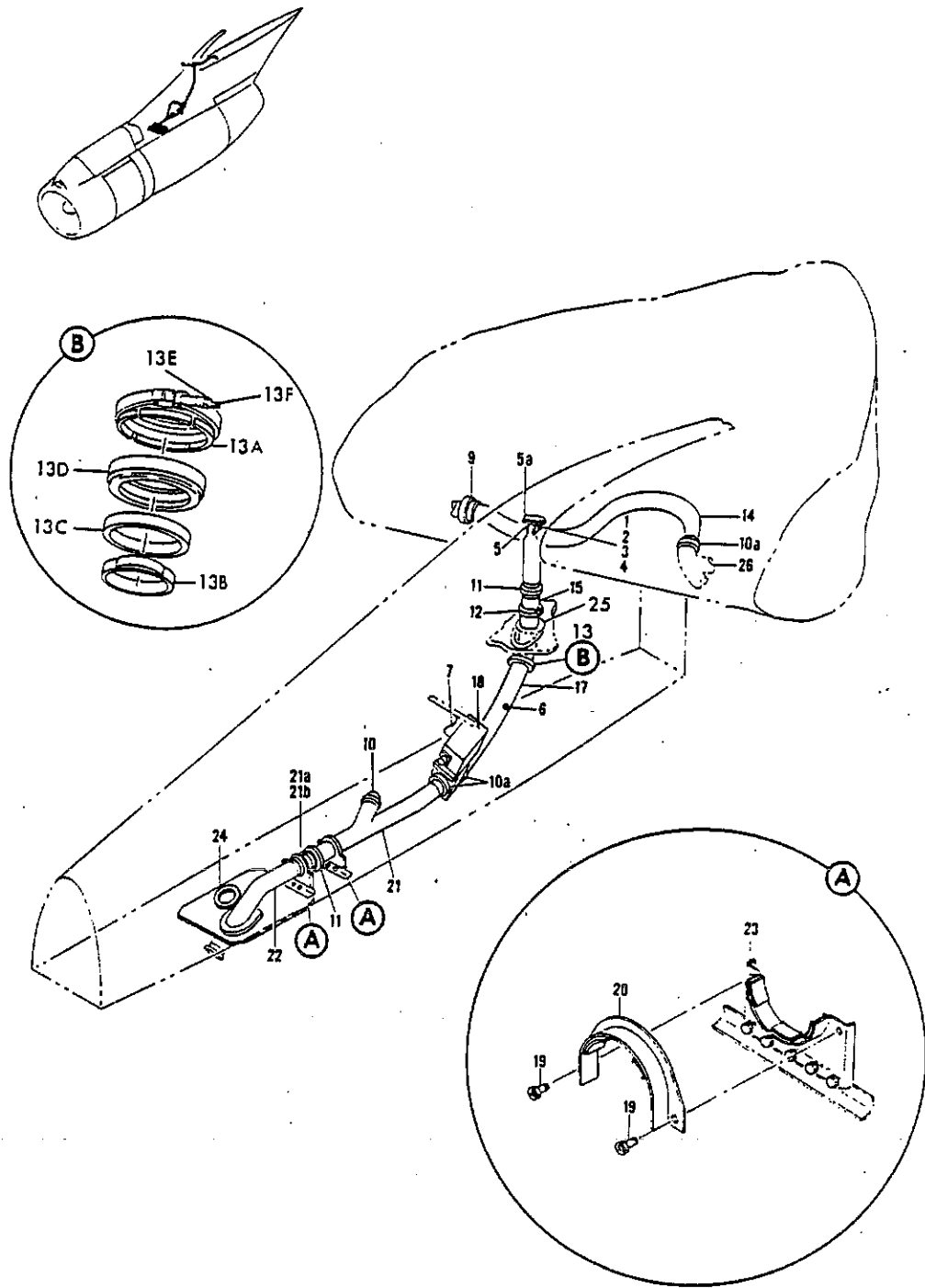


FIGURE 11. DUCT INSTL. INBOARD STRUT AIR CONDITIONING AND WING THERMAL ANTI-ICING  
 (ICE AND RAIN PROTECTION ONLY)



**PARTS CATALOG**

FIGURE & ITEM NO.	MANUFACTURER'S PART NUMBER	NOMENCLATURE							EFF FROM TO	UNITS PER ASSY
		1	2	3	4	5	6	7		
11	65-11898-13	DUCT INSTL, INBOARD STRUT AIR CONDITIONING AND WING . . . THERMAL ANTI-ICING LH (ICE AND RAIN PROTECTION ONLY) (SEE 54-1, FIG. 21A, ITEM 15, 54-1, FIG. 21B, ITEM 14 AND 54-1, FIG. 21C, ITEM 25)								RF
	65-11898-14	DUCT INSTL, INBOARD STRUT AIR CONDITIONING AND WING . . . THERMAL ANTI-ICING RH (ICE AND RAIN PROTECTION ONLY) (SEE 54-1, FIG. 21A, ITEM 15, 54-1, FIG. 21B, ITEM 14 AND 54-1, FIG. 21C, ITEM 25)								RF
1	NAS1104-11W	. BOLT. . . . .								1
2	AN960-416	. WASHER. . . . .								1
3	NAS679A4W	. NUT . . . . .								1
4	NAS75-4-018	. BUSHING . . . . .								1
5	60-4916-3001	. TEE, RH OUTBOARD THERMAL ANTI-ICING DUCT SUPPORT (LH ONLY)								1
5	60-4916-3002	. TEE, RH OUTBOARD THERMAL ANTI-ICING DUCT SUPPORT (RH ONLY)								1
		ATTACHING PARTS								
	NAS1103-8W	. BOLT. . . . .								2
	AN960-10	. WASHER. . . . .								2
	NAS679A3W	. NUT . . . . .								2
5A	66-20364-1	. STRIP, WING THERMAL ANTI-ICING SUPPORT TEE RUB. . . .								1
6	MS28034-1	. BULB. . . . .								1
7	MS25083-188B	. JUMPER ASSY . . . . .								1
		ATTACHING PARTS								
	NAS603-10	. SCREW . . . . .								2
	AN960C10L	. WASHER. . . . .								2
	NAS679A3W	. NUT . . . . .								2
9	66-9189-1	. GASKET, WING LEADING EDGE ANTI-ICING CROSSOVER DUCT .								1
10A	BACC10DP250	. COUPLING. . . . .								3
11	BACC10DP300	. CLAMP . . . . .								2
12	BACC10BN388LSH	. CLAMP . . . . .								1
13	CF15-300	. CLAMP ASSY, FLEXIBLE (V98625) . . . . .								1
M 13A	50880-300	. COUPLING, (V98625) . . . . .								1
M 13B	24170-300	. RETAINER ASSY, (V98625) . . . . .								1
M 13C	17351-300	. RING, (V98625) . . . . .								1
M 13D	24098-300	. SLEEVE, (V98625) . . . . .								1
M 13E	57979-4	. NUT, (V98625) . . . . .								1
M 13F	18289-75L	. BOLT, (V98625) . . . . .								1
14	65-22225-1	. DUCT ASSY, INBOARD STRUT THERMAL ANTI-ICING (LH ONLY)								1
14	65-22225-2	. DUCT ASSY, INBOARD STRUT THERMAL ANTI-ICING (RH ONLY)								1
15	69-35053-2	. DUCT ASSY, THERMAL ANTI-ICING . . . . .								1
17	65-11796-2	. DUCT ASSY, INBOARD STRUT THERMAL ANTI-ICING SYSTEM .								1
18	10-3291	. VALVE, 2-1/2 IN. DIA AIR SHUTOFF. . . . .								1
19	NAS1103-1W	. BOLT. . . . .								4
20	66-1819	. CLAMP ASSY, DUCT SUPPORT. . . . .								2
21	65-42001-16	. DUCT ASSY, NACELLE STRUT THERMAL ANTI-ICING SYSTEM .								1
22	65-11897-23	. DUCT ASSY, (LH ONLY) . . . . .								1
22	65-11897-23	. DUCT ASSY, OUTBOARD STRUT THERMAL ANTI-ICING (RH . . . ONLY)								1
23	66-1818-2	. BRACKET ASSY, DUCT SUPPORT. . . . .								2
		ATTACHING PARTS								
	NAS1103-1W	. BOLT. . . . .								8
	AN960-10L	. WASHER. . . . .								10
	NAS679A3W	. NUT . . . . .								5
24	69-10830-15	. DOOR INSTL, NACELLE LOWER SPAR. . . . .								1
	69-10830-17	. DOOR ASSY, NACELLE LOWER SPAR . . . . .								1
		ATTACHING PARTS								
	NAS623-3-6	. SCREW . . . . .								64
	NAS1103-1W	. BOLT. . . . .								26
25		. FOR REFERENCE TO OTHER DUCT DETAILS, SEE NMA. . . . .								
		SPAR INSTL, INBOARD NACELLE STRUT MID (FOR REF SEE FIG. 13)								RF
26		DUCT INSTL, FRONT SPAR STATION 416 TO 683 WING LEADING EDGE THERMAL ANTI-ICING (FOR REF SEE FIG. 18)								RF

MISSING ITEM NUMBERS ARE NOT APPLICABLE

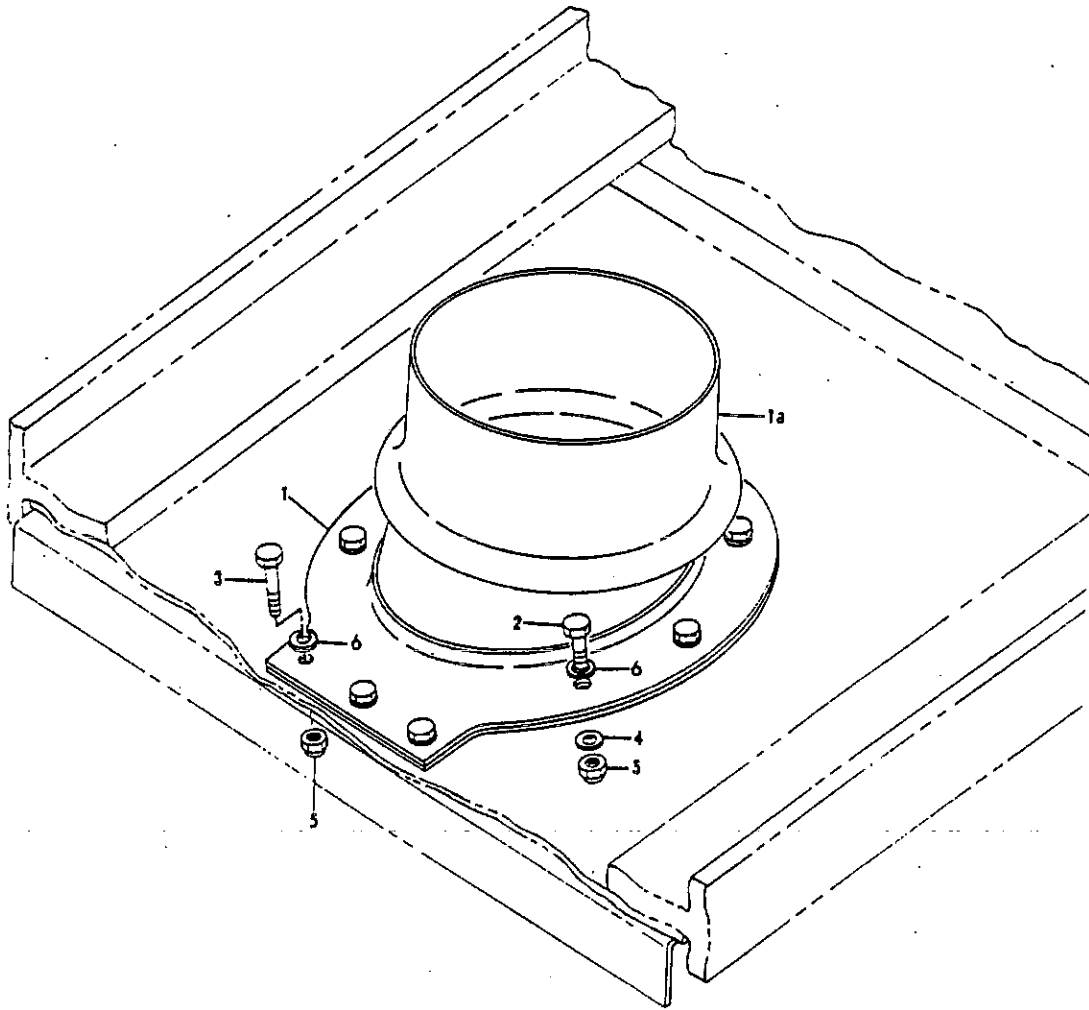
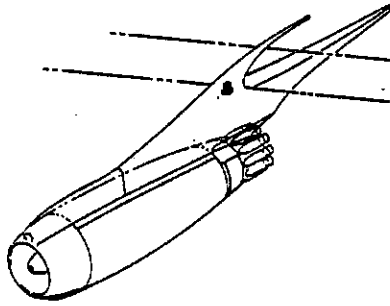


FIGURE 13. INBOARD NACELLE STRUT MID-SPAR INSTL. (ICE AND RAIN PROTECTION ONLY)



**PARTS CATALOG**

FIGURE & ITEM NO.	MANUFACTURER'S PART NUMBER	NOMENCLATURE							EFF FROM TO	UNITS PER ASSY
		1	2	3	4	5	6	7		
13	64-1065-3064	SPAR INSTL, INBOARD NACELLE STRUT MID (ICE AND RAIN . . . PROTECTION ONLY) (SEE 54-1, FIG. 24, ITEM 55)								RF
1	66-10795	. FLANGE, INBOARD STRUT THERMAL ANTI-ICING DUCT SEAL. . .								1
1A	69-11234	. SEAL, INBOARD STRUT THERMAL ANTI-ICING DUCT . . . . .								1
		ATTACHING PARTS								
2	AN3-4A	. BOLT. . . . .								7
3	NAS1103-5W	. BOLT. . . . .								3
4	AN960D10L	. WASHER. . . . .								7
5	NAS679A3W	. NUT . . . . .								10
		. FOR REFERENCE TO OTHER SPAR DETAILS, SEE NHA. . . . .								

MISSING ITEM NUMBERS ARE NOT APPLICABLE

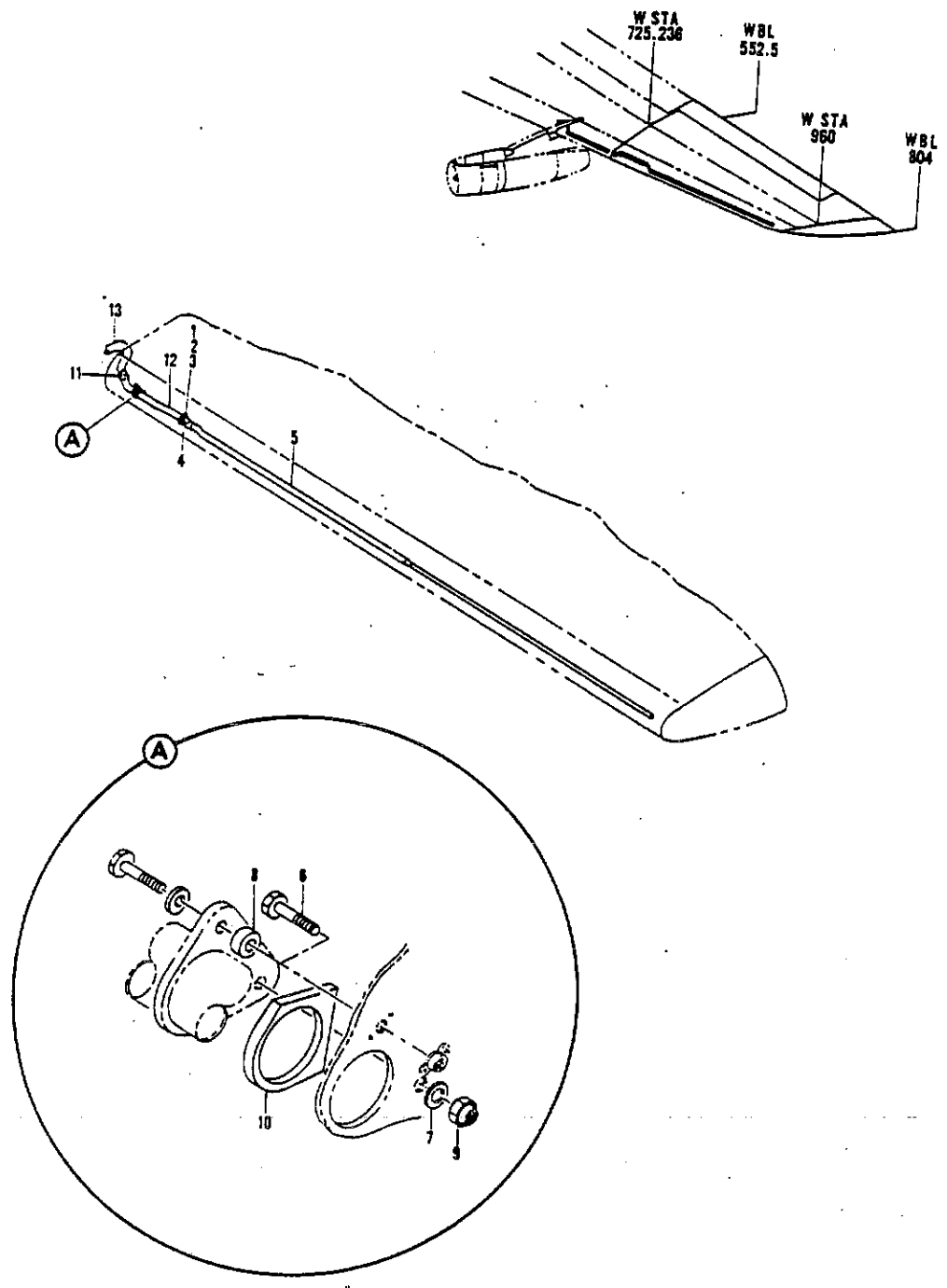


FIGURE 16. DUCT INSTL. WING LEADING EDGE THERMAL ANTI-ICING



**PARTS CATALOG**

FIGURE & ITEM NO.	MANUFACTURER'S PART NUMBER	NOMENCLATURE							EFF FROM TO	UNITS PER ASSY	
		1	2	3	4	5	6	7			
16	65-19397-3	DUCT INSTL, WING LEADING EDGE THERMAL ANTI-ICING. . . .								RF	
	. DUCT INSTL, FRONT SPAR STATION 745 TO 960 WING. . . . LEADING EDGE THERMAL ANTI-ICING (LH) (SEE 57-4, FIG. 5, ITEM 75)										
	65-19397-4	. DUCT INSTL, FRONT SPAR STATION 745 TO 960 WING. . . . LEADING EDGE THERMAL ANTI-ICING (RH) (SEE 57-4, FIG. 5, ITEM 75)								RF	
	1	NAS333CP5	. . . BOLT. . . . .								2
	2	AN960PD10L	. . . WASHER. . . . .								2
	3	BACN10JD103	. . . NUT . . . . .								2
	4	BACP11L218	. . . PACKING . . . . .								1
	5	65-19374-1	. . . DUCT ASSY, FRONT SPAR STATION 744.83 TO 957.83 WING LEADING EDGE THERMAL ANTI-ICING (LH ONLY)								1
	5	65-19374-2	. . . DUCT ASSY, FRONT SPAR STATION 744.83 TO 957.83 WING LEADING EDGE THERMAL ANTI-ICING (RH ONLY)								1
		65-19397-1	. DUCT INSTL, FRONT SPAR STATION 710 TO 745 WING. . . . LEADING EDGE THERMAL ANTI-ICING (LH) (SEE 57-4, FIG. 9, ITEM 20)								RF
		65-19397-2	. DUCT INSTL, FRONT SPAR STATION 710 TO 745 WING. . . . LEADING EDGE THERMAL ANTI-ICING (RH) (SEE 57-4, FIG. 9, ITEM 20)								RF
	6	NAS1303-9W	. . . BOLT. . . . .								2
	7	AN960PD10L	. . . WASHER. . . . .								2
8	BACS18K10-12W	. . . SPACER. . . . .								1	
9	NAS679A3W	. . . NUT . . . . .								1	
10	69-17064-6	. . . GASKET, LEADING EDGE THERMAL ANTI-ICING DUCT FLANGE								1	
11	BACP11L220	. . . PACKING . . . . .								1	
12	65-20886-7	. . . DUCT ASSY, FRONT SPAR STATION 706.95 TO 745.40. . . . THERMAL ANTI-ICING (LH ONLY)								1	
12	65-20886-8	. . . DUCT ASSY, FRONT SPAR STATION 706.95 TO 745.40. . . . THERMAL ANTI-ICING (RH ONLY)								1	
13		DUCT INSTL, OUTBOARD STRUT AIR CONDITIONING AND WING. THERMAL ANTI-ICING (ICE AND RAIN PROTECTION ONLY) (FOR REF SEE FIG. 5)								RF	

MISSING ITEM NUMBERS ARE NOT APPLICABLE

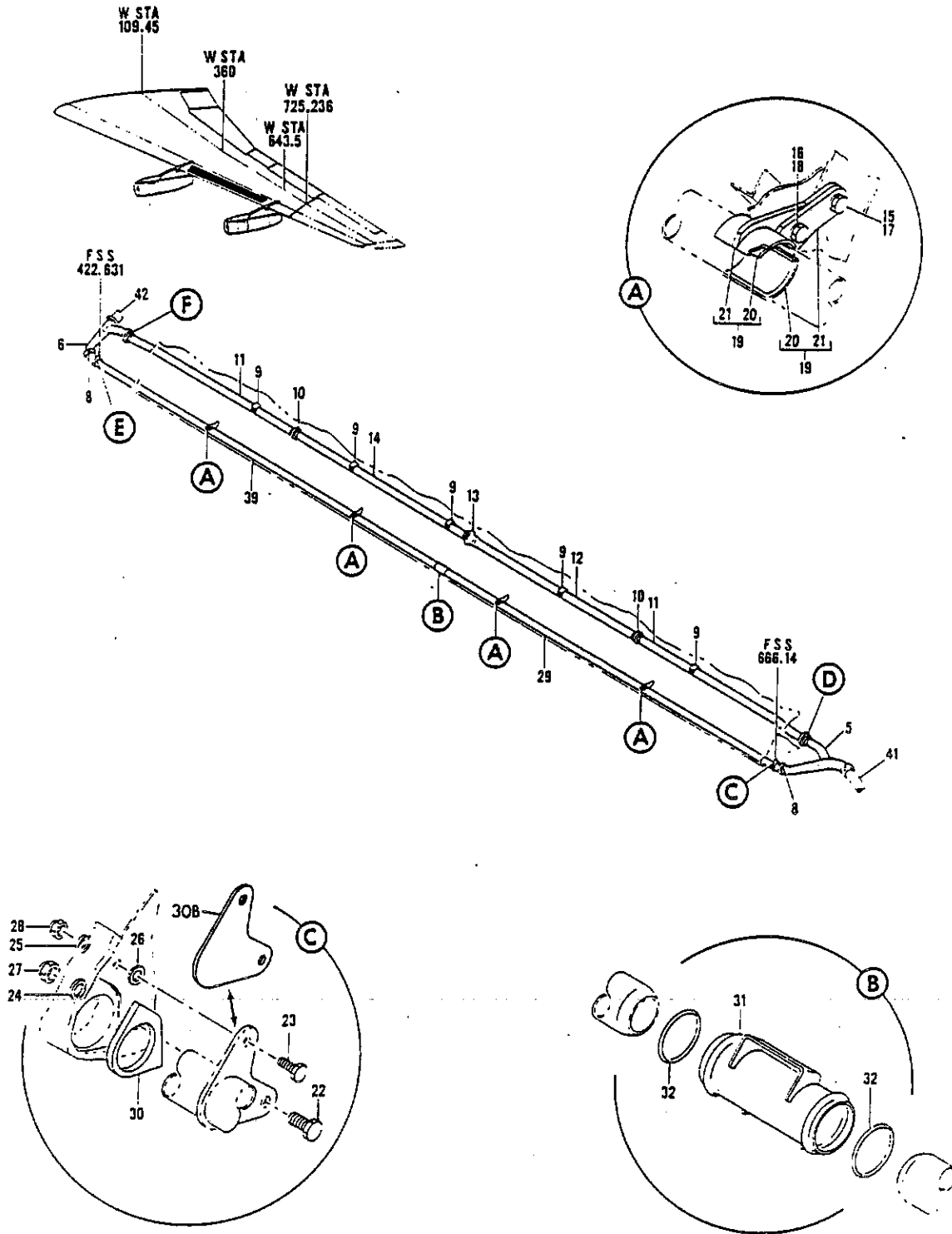


FIGURE 18. DUCT INSTL, FRONT SPAR STATION 416 TO 683 WING LEADING EDGE THERMAL ANTI-ICING (SHEET 1)

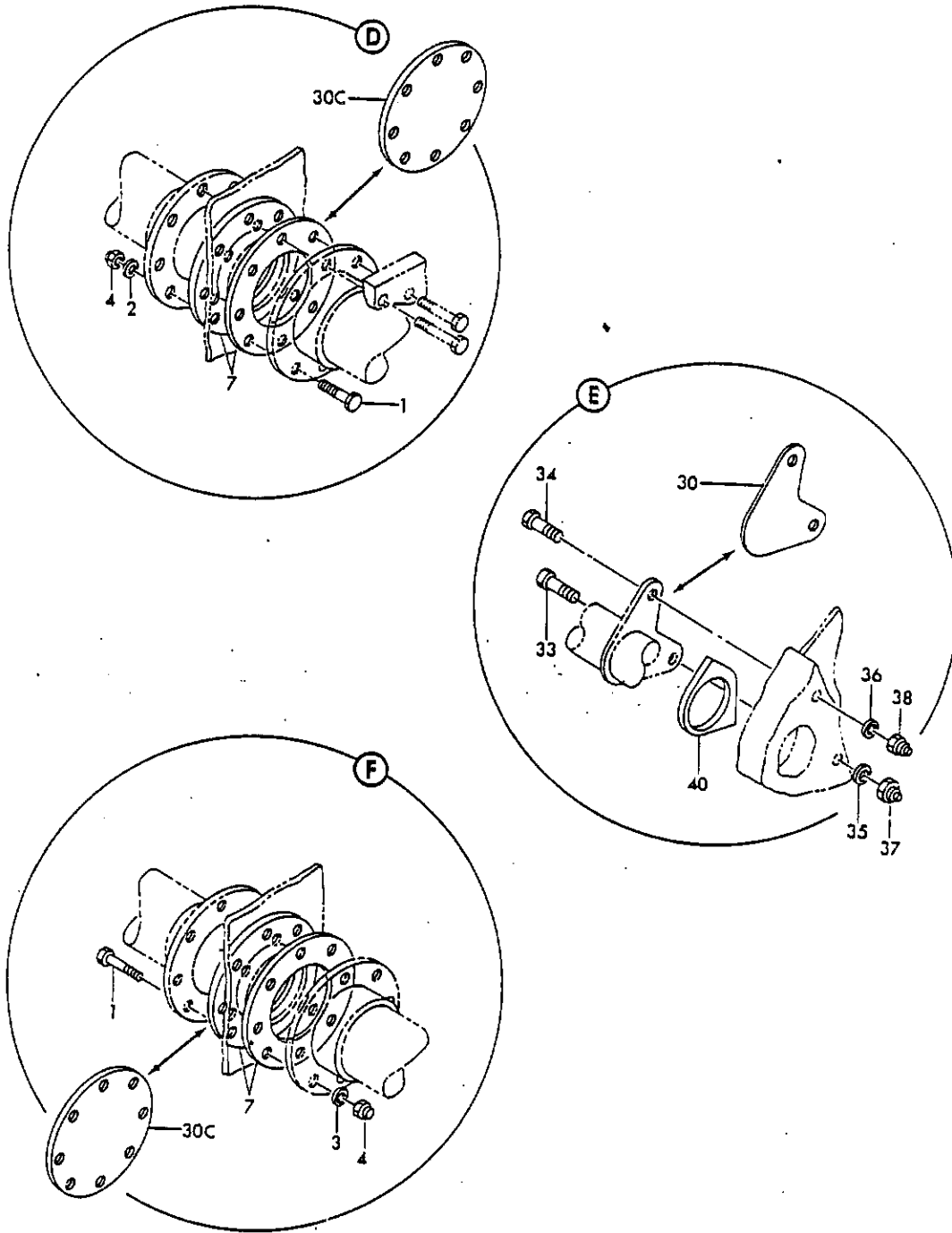


FIGURE 18. DUCT INSTL, FRONT SPAR STATION 416 TO 583 WING LEADING EDGE THERMAL ANTI-ICING (SHEET 2)


  
**PARTS CATALOG**

FIGURE & ITEM NO.	MANUFACTURER'S PART NUMBER	NOMENCLATURE							EFF FROM TO	UNITS PER ASSY
		1	2	3	4	5	6	7		
18	65-18771-1	DUCT INSTL, FRONT SPAR STATION 416 TO 683 WING LEADING EDGE THERMAL ANTI-ICING (LH) (SEE 57-4, FIG. 7, ITEM 6 AND 57-4, FIG. 8, ITEM 33)								RF
	65-18771-2	DUCT INSTL, FRONT SPAR STATION 416 TO 683 WING LEADING EDGE THERMAL ANTI-ICING (RH) (SEE 57-4, FIG. 7, ITEM 6 AND 57-4, FIG. 8, ITEM 33)								RF
1	AN3-6A	. BOLT. . . . .								14
2	AN960PD10	. WASHER. . . . .								6
3	AN960PD10L	. WASHER. . . . .								8
4	NAS679A3W	. NUT . . . . .								14
5	65-19442-1	. DUCT ASSY, WING LEADING EDGE THERMAL ANTI-ICING CROSSOVER Y (LH ONLY)								1
5	65-19442-2	. DUCT ASSY, WING LEADING EDGE THERMAL ANTI-ICING CROSSOVER Y (RH ONLY)								1
6	65-20800-1	. DUCT ASSY, FRONT SPAR STATION 422.631 THERMAL ANTI-ICING CROSSOVER Y (LH ONLY)								1
6	65-20800-2	. DUCT ASSY, FRONT SPAR STATION 422.631 THERMAL ANTI-ICING CROSSOVER Y (RH ONLY)								1
7	66-9189-1	. GASKET, WING LEADING EDGE ANTI-ICING CROSSOVER DUCT								4
8	BACP11L220	. PACKING . . . . .								2
9	S277-10	. SUPPRT ASSY, ANTI ICING DUCT (V18076). . . . .								5
		ATTACHING PARTS								
	AN3-4A	. BOLT. . . . .								20
	AN960PD10L	. WASHER. . . . .								20
10	BACC10DP200	. CLAMP . . . . .								2
11	65-20857-1	. DUCT ASSY, FRONT SPAR STATION 422.75 TO 489.05. THERMAL ANTI-ICING CROSSOVER								2
12	65-67067-3	. DUCT ASSY, WING LEADING EDGE THERMAL ANTI-ICING								1
13	BACP11L329	. PACKING . . . . .								1
14	65-10059-4	. DUCT ASSY, FRONT SPAR STATION 422.63 TO 666.14 WING LEADING EDGE ANTI-ICING CROSSOVER								1
15	AN3-6A	. BOLT. . . . .								4
16	AN3-7A	. BOLT. . . . .								4
17	AN960PD10L	. WASHER. . . . .								4
18	AN960PD10	. WASHER. . . . .								8
19	65-18795-1	. SUPPORT ASSY, THERMAL ANTI-ICING DUCT								8
20	66-12632-1	. PACKING, THERMAL ANTI-ICING DUCT SUPPORT.								1
21	65-18795-2	. SUPPORT, THERMAL ANTI-ICING DUCT.								1
22	NAS1304-7W	. BOLT. . . . .								1
23	NAS1303-7W	. BOLT. . . . .								1
24	AN960PD416L	. WASHER. . . . .								1
25	AN960PD10L	. WASHER. . . . .								1
26	AN960PD10	. WASHER. . . . .								1
27	NAS679A4W	. NUT . . . . .								1
28	NAS679A3W	. NUT . . . . .								1
29	65-20871-3	. DUCT ASSY, FRONT SPAR STATION 548.106 TO 569.34 WING LEADING EDGE THERMAL ANTI-ICING (LH ONLY)								1
29	65-20871-4	. DUCT ASSY, FRONT SPAR STATION 548.106 TO 569.34 WING LEADING EDGE THERMAL ANTI-ICING (RH ONLY)								1
30	69-17064-7	. GASKET, LEADING EDGE THERMAL ANTI-ICING DUCT FLANGE								1
31	69-14805-1	. DUCT ASSY, WING LEADING EDGE THERMAL ANTI-ICING ATTACHING PARTS								1
		ATTACHING PARTS								
	AN3-5A	. BOLT. . . . .								4
	AN960PD10L	. WASHER. . . . .								4
32	BACP11L218	. PACKING . . . . .								2
33	NAS1304-9W	. BOLT. . . . .								1
34	NAS1303-8W	. BOLT. . . . .								1
35	AN960PD416L	. WASHER. . . . .								1
36	AN960PD10L	. WASHER. . . . .								1
37	NAS679A4W	. NUT . . . . .								1
38	NAS679A3W	. NUT . . . . .								1
39	65-20871-1	. DUCT ASSY, FRONT SPAR STATION 422.631 TO 546.46 WING LEADING EDGE THERMAL ANTI-ICING (LH ONLY)								1
39	65-20871-2	. DUCT ASSY, FRONT SPAR STATION 422.631 TO 546.46 WING LEADING EDGE THERMAL ANTI-ICING (RH ONLY)								1
40	69-17064-1	. GASKET, LEADING EDGE THERMAL ANTI-ICING DUCT FLANGE								1
41		DUCT INSTL, OUTBOARD STRUT AIR CONDITIONING AND WING THERMAL ANTI-ICING (ICE AND RAIN PROTECTION ONLY) (FOR REF SEE FIG. 5)								RF
42		DUCT INSTL, INBOARD STRUT AIR CONDITIONING AND WING THERMAL ANTI-ICING (ICE AND RAIN PROTECTION ONLY) (FOR REF SEE FIG. 11)								RF

MISSING ITEM NUMBERS ARE NOT APPLICABLE

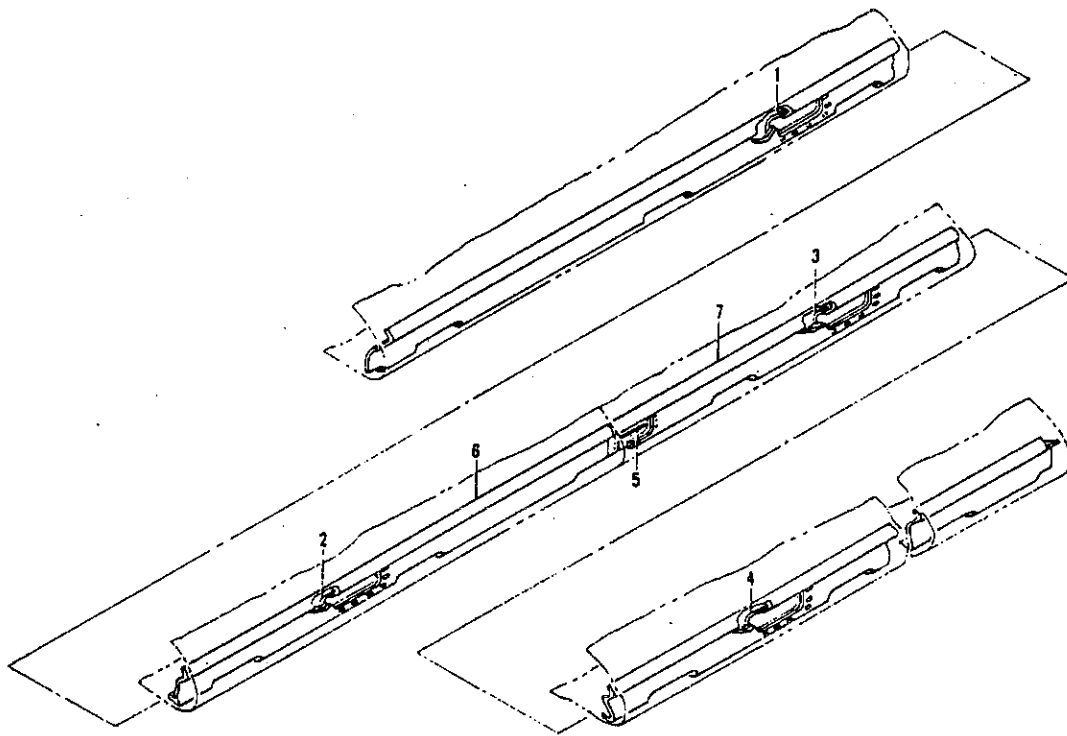
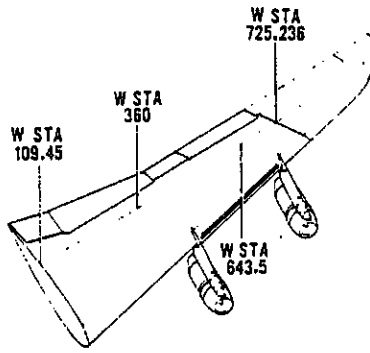


FIGURE 19. DUCT INSTL, FRONT SPAR STATION 422 TO 666 THERMAL ANTI-ICING



**PARTS CATALOG**

FIGURE & ITEM NO.	MANUFACTURER'S PART NUMBER	NOMENCLATURE							EFF FROM TO	UNITS PER ASSY
		1	2	3	4	5	6	7		
19	65-18185-1	DUCT INSTL, FRONT SPAR STATION 422 TO 666 THERMAL . . .								RF
		ANTI-ICING (LH) (SEE 57-4, FIG. 10, ITEM 4C)								
	65-18185-2	DUCT INSTL, FRONT SPAR STATION 422 TO 666 THERMAL . . .								RF
		ANTI-ICING (RH) (SEE 57-4, FIG. 10, ITEM 4C)								
1	65-18185-3	. DOOR ASSY, FRONT SPAR STATION 422 TO 666 THERMAL. . .								1
		ANTI-ICING DUCT (LH ONLY)								
1	65-18185-4	. DOOR ASSY, FRONT SPAR STATION 422 TO 666 THERMAL. . .								1
		ANTI-ICING DUCT (RH ONLY)								
2	65-18185-5	. DOOR ASSY, FRONT SPAR STATION 422 TO 666 THERMAL. . .								1
		ANTI-ICING DUCT (LH ONLY)								
2	65-18185-6	. DOOR ASSY, FRONT SPAR STATION 422 TO 666 THERMAL. . .								1
		ANTI-ICING DUCT (RH ONLY)								
3	65-18185-9	. DOOR ASSY, FRONT SPAR STATION 422 TO 666 THERMAL. . .								1
		ANTI-ICING DUCT (LH ONLY)								
3	65-18185-10	. DOOR ASSY, FRONT SPAR STATION 422 TO 666 THERMAL. . .								1
		ANTI-ICING DUCT (RH ONLY)								
4	65-18185-11	. DOOR ASSY, FRONT SPAR STATION 422 TO 666 THERMAL. . .								1
		ANTI-ICING DUCT (LH ONLY)								
4	65-18185-12	. DOOR ASSY, FRONT SPAR STATION 422 TO 666 THERMAL. . .								1
		ANTI-ICING DUCT (RH ONLY)								
		ATTACHING PARTS								
	NAS1103-2W	. BOLT. . . . .								36
	AN960D10	. WASHER. . . . .								36
5	65-18185-7	. DOOR ASSY, FRONT SPAR STATION 422 TO 666 THERMAL. . .								1
		ANTI-ICING DUCT (LH ONLY)								
5	65-18185-8	. DOOR ASSY, FRONT SPAR STATION 422 TO 666 THERMAL. . .								1
		ANTI-ICING DUCT (RH ONLY)								
		ATTACHING PARTS								
	NAS1103-4W	. BOLT. . . . .								4
	AN960D10	. WASHER. . . . .								4
6	65-18185-13	. DUCT, FRONT SPAR STATION 422 TO 544 THERMAL . . . . .								1
		ANTI-ICING (LH ONLY)								
6	65-18185-14	. DUCT, FRONT SPAR STATION 422 TO 544 THERMAL . . . . .								1
		ANTI-ICING (RH ONLY)								
7	65-18185-41	. DUCT, FRONT SPAR STATION 544 TO 666 THERMAL . . . . .								1
		ANTI-ICING (LH ONLY)								
7	65-18185-42	. DUCT, FRONT SPAR STATION 544 TO 666 THERMAL . . . . .								1
		ANTI-ICING (RH ONLY)								

MISSING ITEM NUMBERS ARE NOT APPLICABLE

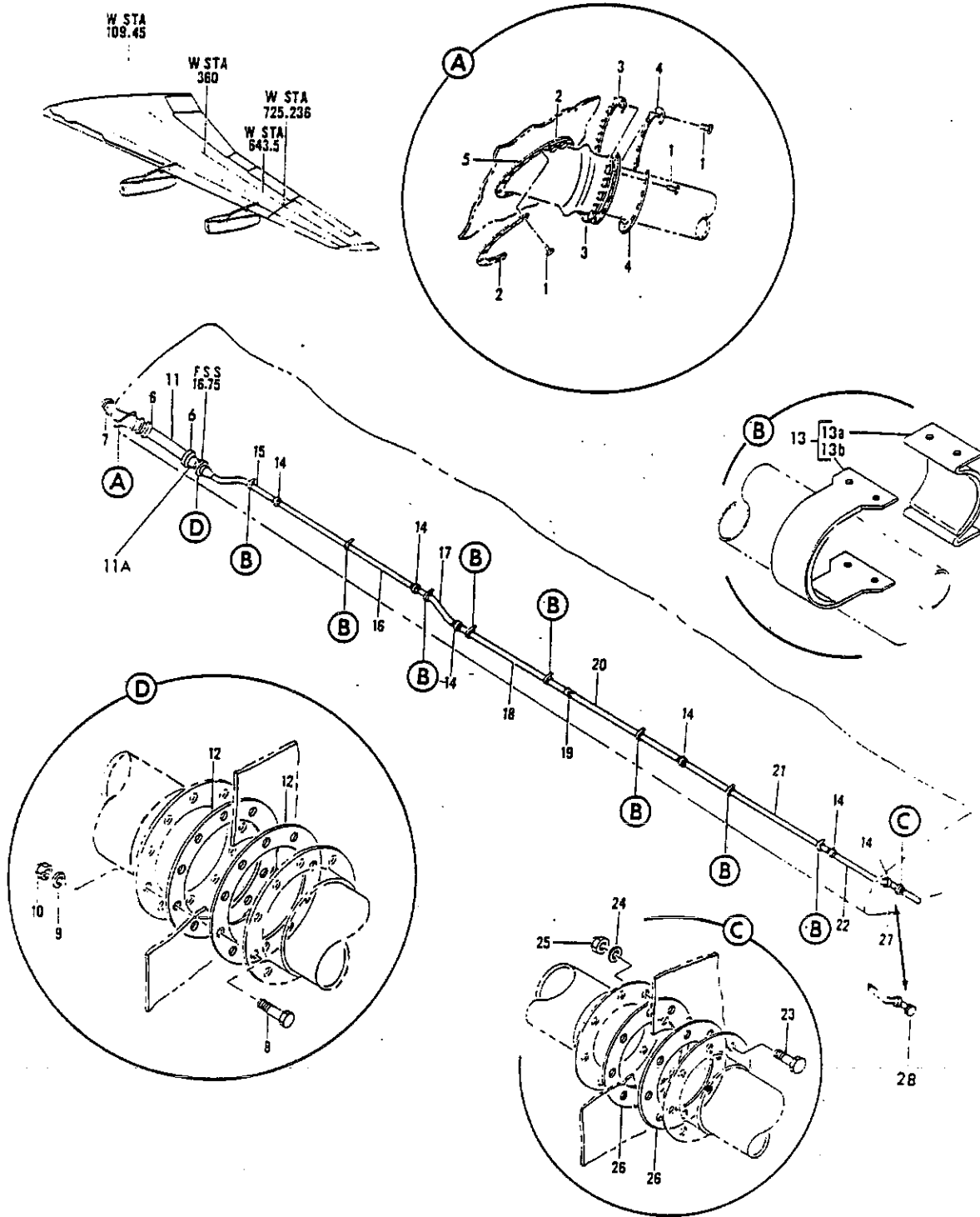


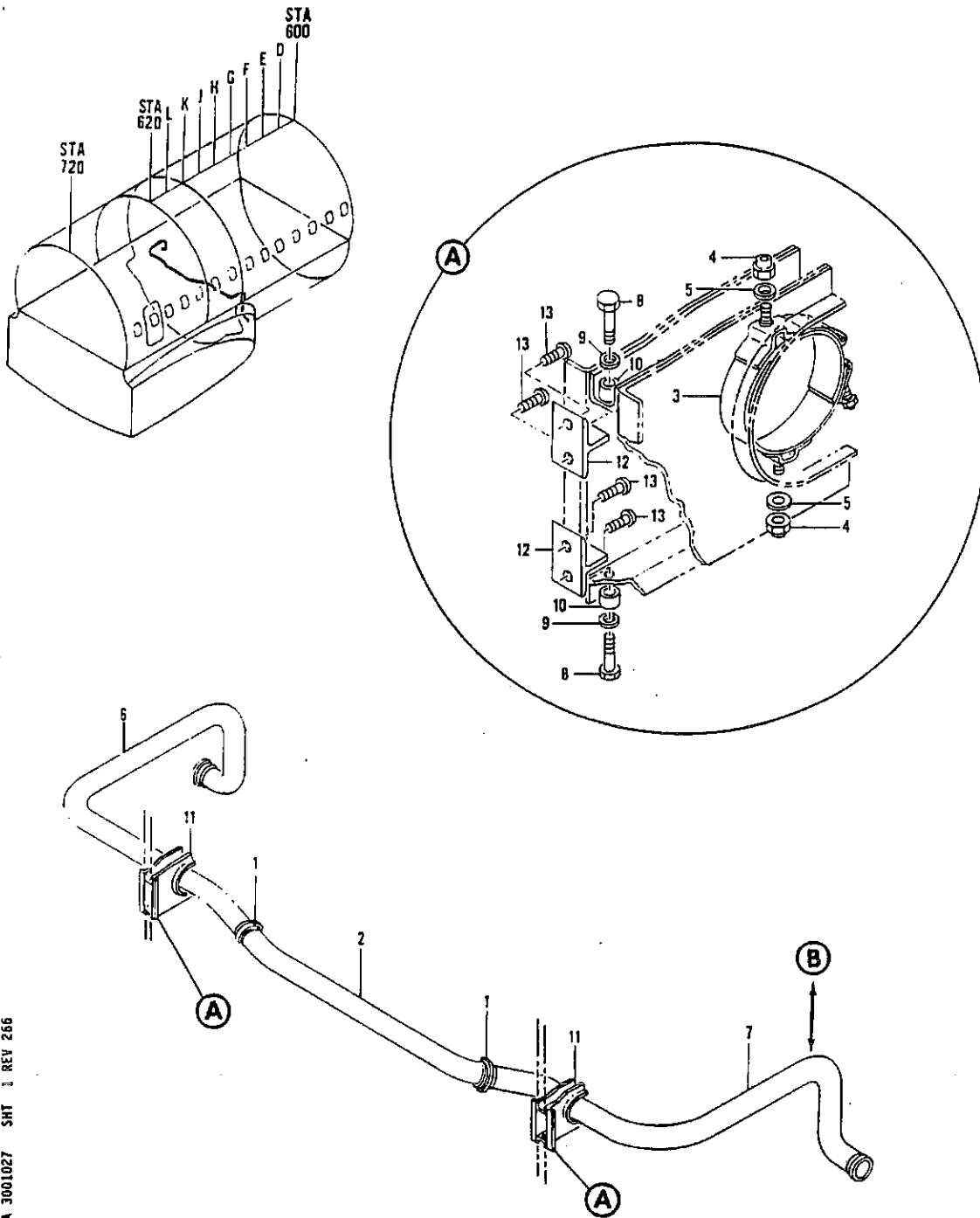
FIGURE 26. DUCT INSTL, BODY BUTTOK LINE 56.45 TO FRONT SPAR STATION 382.66 WING LEADING EDGE  
THERMAL ANTI-ICING



**PARTS CATALOG**

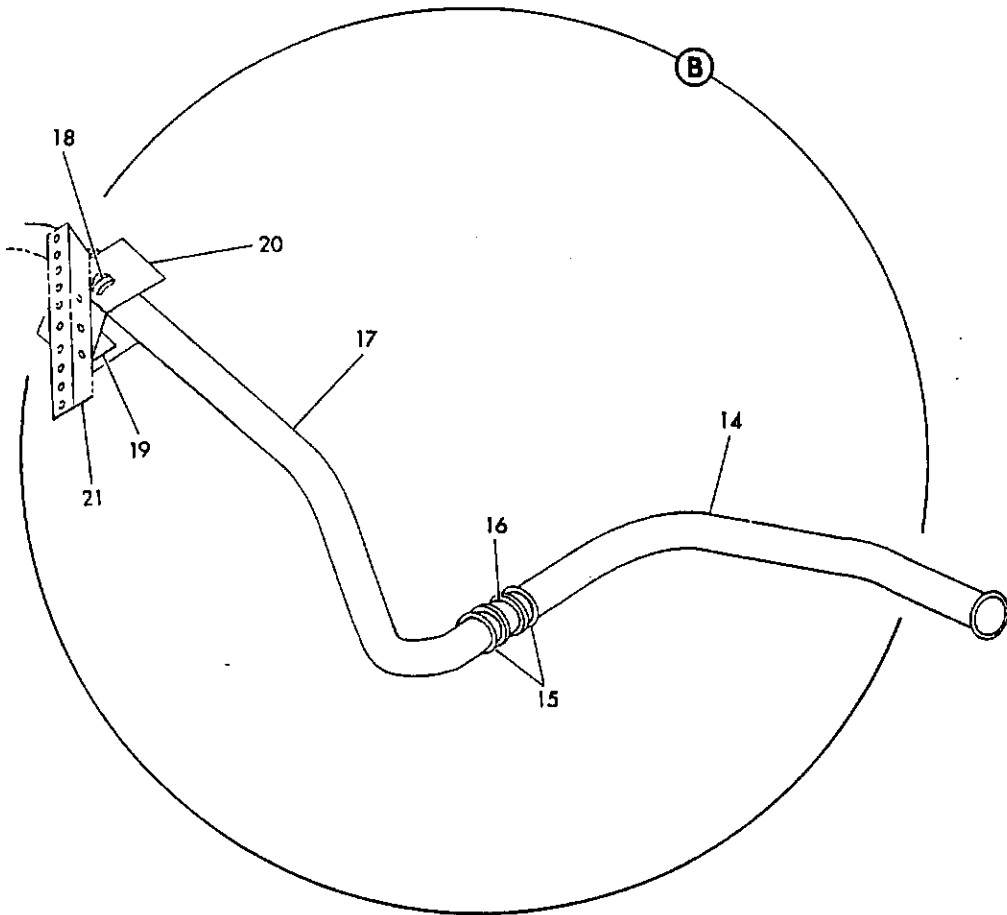
FIGURE & ITEM NO.	MANUFACTURER'S PART NUMBER	NOMENCLATURE	EFF FROM TO	UNITS
				PER ASSY
26	65-32546-1	DUCT INSTL, BODY BUTTOCK LINE 56.45 TO FRONT SPAR . . . STATION 382.66 WING LEADING EDGE THERMAL ANTI-ICING (LH) (SEE 57-4, FIG. 8, ITEM 20)		RF
	65-32546-2	DUCT INSTL, BODY BUTTOCK LINE 56.45 TO FRONT SPAR . . . STATION 382.66 WING LEADING EDGE THERMAL ANTI-ICING (RH) (SEE 57.4, FIG. 8, ITEM 20)		RF
	69-8735-1	. SEAL INSTL, BODY ANTI-ICING CROSSOVER DUCT (LH ONLY)		1
	69-8735-2	. SEAL INSTL, BODY ANTI-ICING CROSSOVER DUCT (RH ONLY)		1
1	AN3-5A	. . . BOLT. . . . .		28
2	66-2579	. . . RING, ANTI-ICING DUCT PRESSURE SEAL BACK-UP . . . . .		2
3	66-2579-1	. . . RING ASSY, ANTI-ICING DUCT PRESSURE SEAL BACK-UP . . . . .		2
3	66-2579-2	. . . RING, ANTI-ICING DUCT PRESSURE SEAL BACK-UP . . . . .		2
4	66-2579-2	. . . RING, ANTI-ICING DUCT PRESSURE SEAL BACK-UP . . . . .		2
5	10-3274-8	. . . SEAL, FLEXIBLE PRESSURE . . . . .		1
6	BACC10DP300	. . . COUPLING. . . . .		2
7	65-1198-1	. . . DUCT ASSY, ANTI-ICING (LH ONLY) . . . . .		1
7	65-1198-2	. . . DUCT ASSY, ANTI-ICING (RH ONLY) . . . . .		1
8	AN4-7A	. . . BOLT, (USED ON 65-32546-1 AND -2) . . . . .		10
9	AN960PD416	. . . WASHER. . . . .		10
10	NAS679A4W	. . . NUT, (USED ON 65-32546-1 AND -2). . . . .		10
11	65-59536-1	. . . DUCT ASSY, (LH ONLY) . . . . .		1
11	65-59536-2	. . . DUCT ASSY, (RH ONLY) . . . . .		1
12	66-2519	. . . GASKET, ANTI-ICING CROSSOVER DUCT . . . . .		2
13	S277-10	. . . SUPPOT, THERMAL ANTI-ICING DUCT (V18076) . . . . .		8
	AN3-4A	ATTACHING PARTS		
	AN960PD10L	. . . BOLT. . . . .		32
		. . . WASHER. . . . .		32
		*-----*		
14	BACC10DP200	. . . COUPLING. . . . .		6
15	65-12288-5	. . . DUCT ASSY, FRONT SPAR STATION 16.81 TO 43.72 THERMAL ANTI-ICING (LH ONLY)		1
15	65-12288-6	. . . DUCT ASSY, FRONT SPAR STATION 16.81 TO 43.72 THERMAL ANTI-ICING (RH ONLY)		1
16	65-67067	. . . DUCT ASSY, FRONT SPAR STATION 106.95 TO 282.85 WING LEADING EDGE THERMAL ANTI-ICING		1
17	65-32545-1	. . . DUCT ASSY, FRONT SPAR STATION 126.46 TO 148.42. . . . . CROSSOVER THERMAL ANTI-ICING (LH ONLY)		1
17	65-32545-2	. . . DUCT ASSY, FRONT SPAR STATION 126.46 TO 148.42. . . . . CROSSOVER THERMAL ANTI-ICING (RH ONLY)		1
18	65-67067-3	. . . DUCT ASSY, FRONT SPAR STATION 282.85 TO 344.00 WING LEADING EDGE THERMAL ANTI-ICING		1
19	BACP11L329	. . . PACKING . . . . .		1
20	65-10059-4	. . . DUCT ASSY, FRONT SPAR STATION 422.63 TO 666.14 WING LEADING EDGE CROSSOVER ANTI-ICING		1
21	65-67067	. . . DUCT ASSY, FRONT SPAR STATION 106.95 TO 282.85 WING LEADING EDGE THERMAL ANTI-ICING		1
22	69-25746-1	. . . DUCT ASSY, FRONT SPAR STATION 347.93 TO 377.01. . . . . THERMAL ANTI-ICING		1
23	AN3-6A	. . . BOLT, (USED ON 65-32546-1 AND -2) . . . . .		8
24	AN960PD10	. . . WASHER. . . . .		8
25	NAS679A3W	. . . NUT, (USED ON 65-32546-1 AND -2). . . . .		8
26	66-9189-1	. . . GASKET, WING LEADING EDGE CROSSOVER ANTI-ICING DUCT . . . . .		2
27	69-11203-5	. . . DUCT ASSY, FRONT SPAR STATION 377.14 TO 382.54. . . . . THERMAL ANTI-ICING (LH ONLY)		1
27	69-11203-6	. . . DUCT ASSY, FRONT SPAR STATION 377.14 TO 382.54. . . . . THERMAL ANTI-ICING (RH ONLY)		1

MISSING ITEM NUMBERS ARE NOT APPLICABLE



A 3001027 SHT 1 REV 266

FIGURE 27. DUCT INSTL, BODY ANTI-ICING CROSSOVER (SHEET 1)



A 3001027 SHT 2 REV 266

FIGURE 27. DUCT INSTL, BODY ANTI-ICING CROSSOVER (SHEET 2)

NOV 21/95

30-01-27

DETAILED PARTS LIST  
30-01-27  
PAGE 1



**PARTS CATALOG**

FIGURE & ITEM NO.	MANUFACTURER'S PART NUMBER	NOMENCLATURE							EFF FROM TO	UNITS PER ASSY	
		1	2	3	4	5	6	7			
R 27	65-4303	DUCT INSTL, BODY ANTI-ICING CROSSOVER . . . . .								RF	
		DUCT INSTL, BODY ANTI-ICING CROSSOVER (SEE 21-2, FIG. . . . .									
			2, ITEM 4)								
	1	C29C43	. CLAMP, (V89513) . . . . .								2
	2	65-4305	. DUCT ASSY, ANTI-ICING CROSSOVER . . . . .								1
	3	BACC10AD300W	. CLAMP . . . . .								2
	4	BACN10BY54W	. NUT . . . . .								4
	5	BACW10P186C	. WASHER. . . . .								4
	6	65-4304-7	. DUCT ASSY, ANTI-ICING CROSSOVER LH. . . . .								1
	7	65-4304-8	. DUCT ASSY, ANTI-ICING CROSSOVER RH. . . . .								1
	8	AN3-5A	. BOLT. . . . .								4
	9	BACW10P136AL	. WASHER. . . . .								4
	10	NAS43DD3-12	. SPACER. . . . .								4
11	69-3665	. SUPPORT ASSY, ANTI-ICING CROSSOVER DUCT . . . . .								2	
12	69-3665-3	. SUPPORT ASSY, TEE . . . . .								4	
13	NAS603-10	ATTACHING PARTS . SCREW . . . . .								8	
-----*											

MISSING ITEM NUMBERS ARE NOT APPLICABLE

**BOEING** *707* *Intercontinental*   
**PARTS CATALOG**

**SECTION 02**  
**EMENNAGE DEICING**

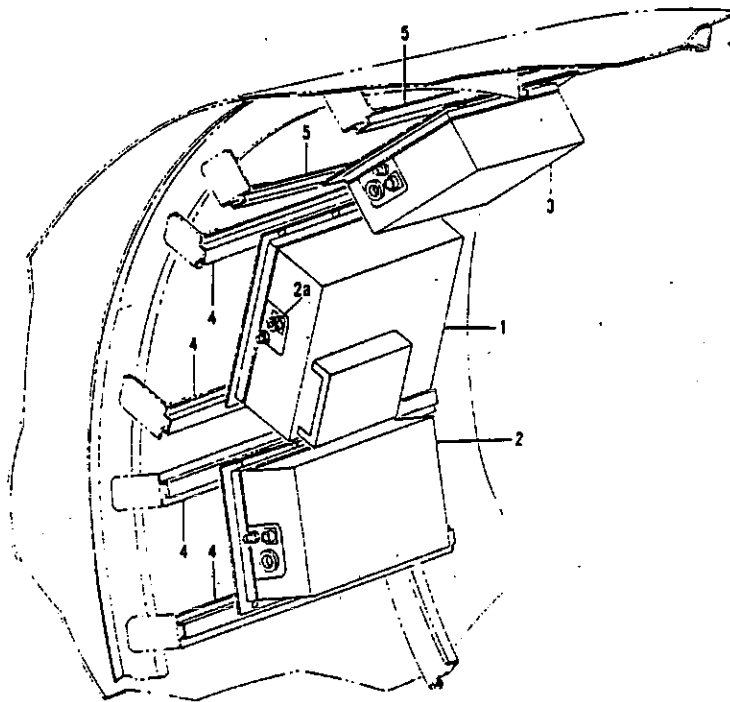
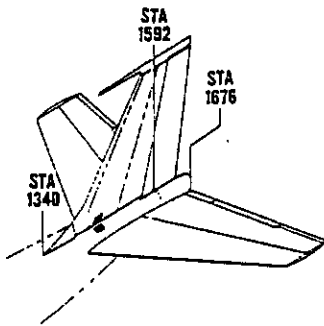


FIGURE 1. CONTROL INSTL, EMPENNAGE DEICE  
STRUCTURE INSTL, EMPENNAGE DEICE CONTROL



**PARTS CATALOG**

FIGURE & ITEM NO.	MANUFACTURER'S PART NUMBER	NOMENCLATURE							EFF FROM TO	UNITS PER ASSY
		1	2	3	4	5	6	7		
1	65-3417-1	STRUCTURE INSTL, EMPENNAGE DEICE CONTROL . . . . .								RF
4	69-2522	. STRUCTURE INSTL, EMPENNAGE DEICE CONTROL (SEE Z4-3, .								
		FIG. 4, ITEM 7A)								
5	69-2522-1	. . CHANNEL ASSY, EMPENNAGE DEICE SUPPORT . . . . .								4
		. . CHANNEL ASSY, EMPENNAGE DEICE SUPPORT . . . . .								2
MISSING ITEM NUMBERS ARE NOT APPLICABLE										



SECTION 03  
ICE DETECTOR AND CONTROLS

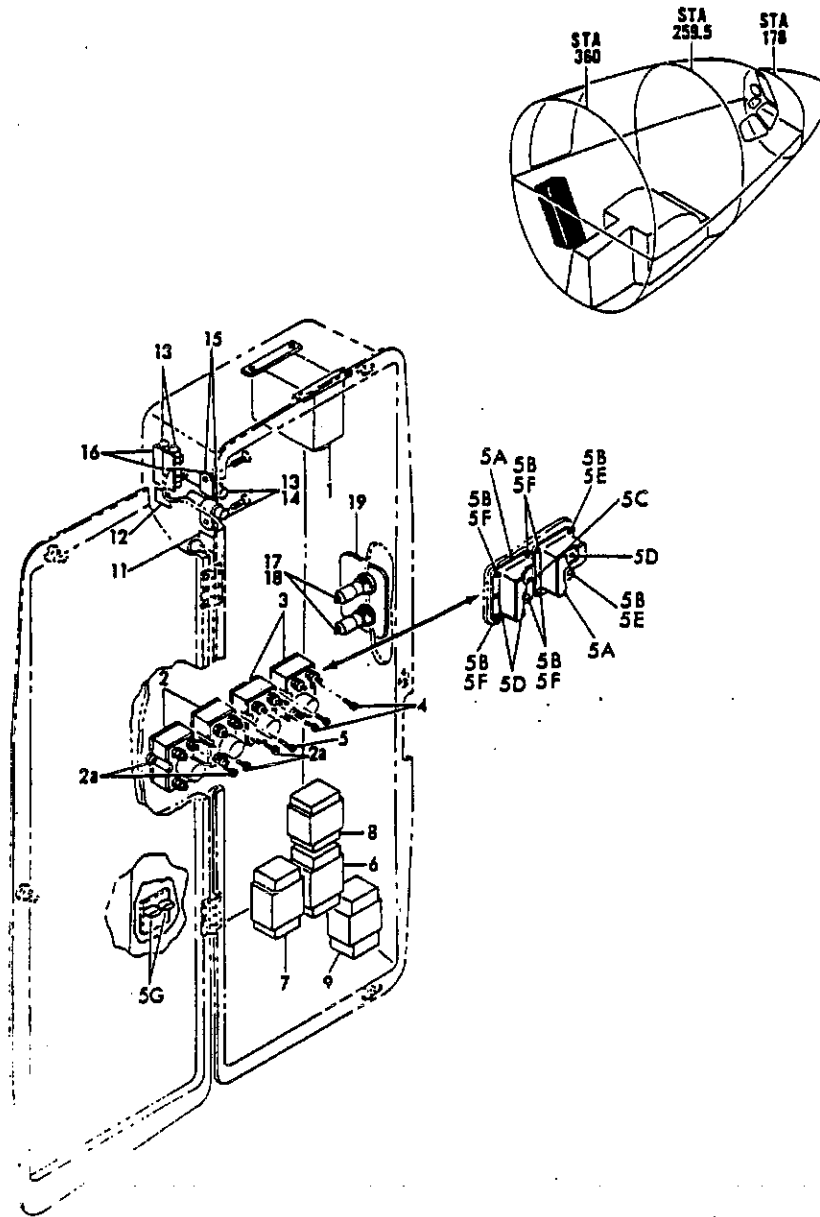


FIGURE 6. SHIELD ASSY, STATION 336 J4 RELAY (ICE AND RAIN PROTECTION)



**PARTS CATALOG**

FIGURE & ITEM NO.	MANUFACTURER'S PART NUMBER	1 2 3 4 5 6 7	NOMENCLATURE	EFF	UNITS
				FROM TO	PER ASSY
R	6		SHIELD ASSY, STATION 336 J4 RELAY (ICE AND RAIN . . . . . PROTECTION ONLY) (SEE 24-6, FIG. 11B, ITEM 2)	0150	RF
R	1		. CONTROL, WINDSHIELD TEMPERATURE . . . . . ATTACHING PARTS	0150	1
R			NAS602-8P . . . . . SCREW . . . . .	0150	4
R	2		MS24140D2 . . . . . RELAY . . . . . ATTACHING PARTS	0150	2
R	2A		NAS603-10P . . . . . SCREW . . . . .	0150	4
R	5A		DR18E1 . . . . . RELAY, (V74063) . . . . . (OPTIONAL TO DR18E5 (V74063))	0150	2
R	5A		DR18E5 . . . . . RELAY, (V74063) . . . . . (OPTIONAL DR18E1 (V74063))	0150	2
R	5B		NAS602-10P . . . . . ATTACHING PARTS	0150	8
R	11		BACM10W6AJ . . . . . MARKER-ALUMINUM FOIL, WINDOW ANTI-ICE FUSE 5 AMP. . . . .	0150	1
R	12		BACM10W6AK . . . . . MARKER-ALUMINUM FOIL, WINDOW ANTI-ICE SPARE FUSE. . . . .	0150	1
R	13		MDX5 . . . . . FUSE, 5 AMP (V71400). . . . .	0150	4
R	14		HKL . . . . . HOLDER, FUSE (V71400) . . . . .	0150	2
R	15		BACC10DK13 . . . . . CLAMP . . . . . ATTACHING PARTS	0150	2
R			NAS603-8P . . . . . SCREW . . . . .	0150	2
R	16		4574 . . . . . HOLDER, SPARE FUSE (V71400) . . . . . ATTACHING PARTS	0150	2
R			NAS601-8P . . . . . SCREW . . . . .	0150	2
R			. FOR REFERENCE TO OTHER SHIELD DETAILS, SEE NHA. . . . .	0150	

MISSING ITEM NUMBERS ARE NOT APPLICABLE

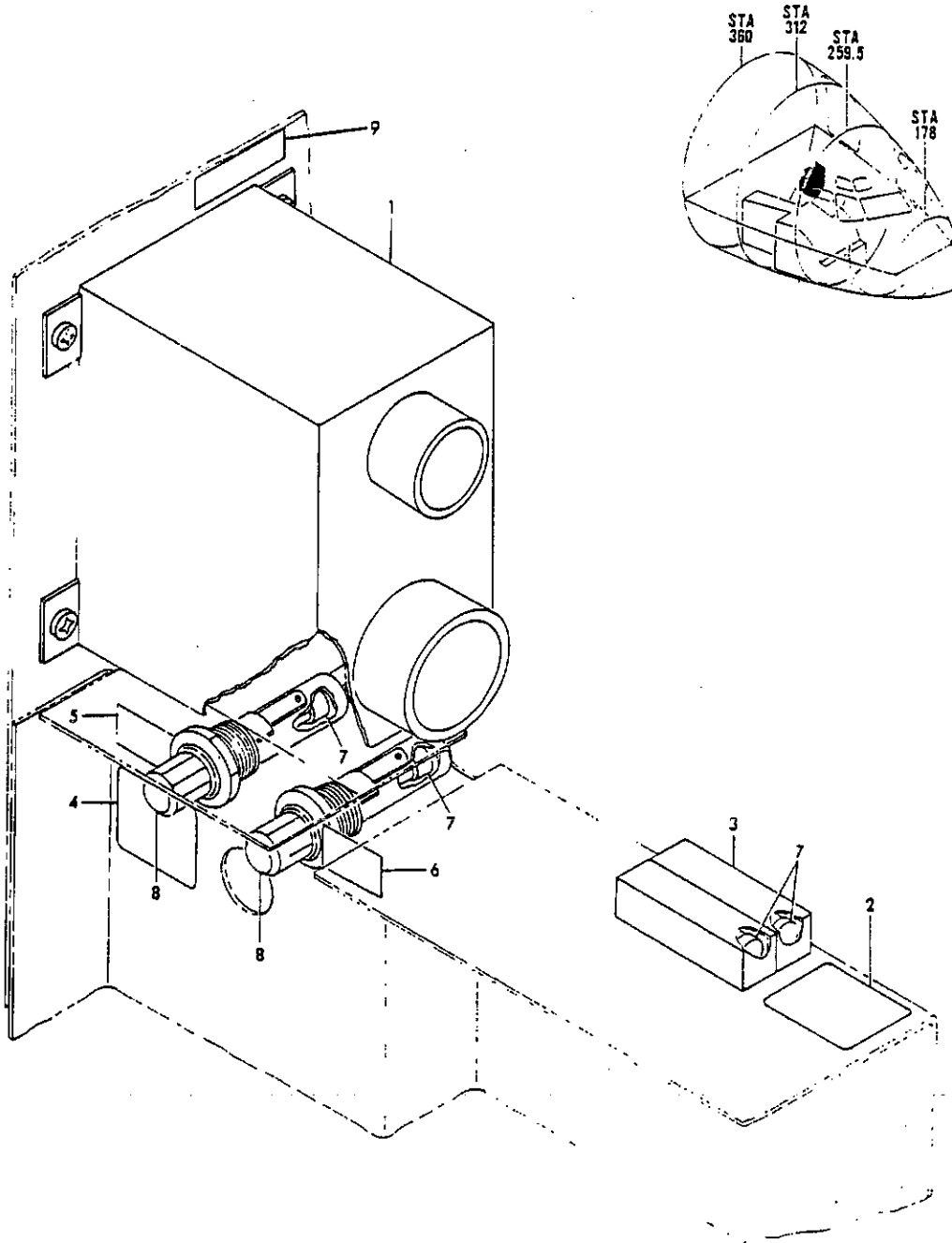


FIGURE 6D. SHIELD ASSY, STATION 335 J27 ELECTRICAL EQUIPMENT (ICE AND RAIN PROTECTION ONLY)

DETAILED PARTS LIST  
30-03-60  
PAGE 0

30-03-60

NOV 21/90



**PARTS CATALOG**

FIGURE & ITEM NO.	MANUFACTURER'S PART NUMBER	NOMENCLATURE							EFF FROM TO	UNITS PER ASSY
		1	2	3	4	5	6	7		
6D	65-58627-18	SHIELD ASSY, STATION 395 J27 ELECTRICAL EQUIPMENT (ICE AND RAIN PROTECTION ONLY) (SEE 24-6, FIG. 11N, ITEM 4)							5199	RF
1	10-3251-5	. RELAY, WINDSHIELD TEMPERATURE CONTROL . . . . .							5199	1
	NAS602-8P	. ATTACHING PARTS								
		. SCREW . . . . .							5199	4
2	BACM10W6AK	. MARKER-ALUMINUM FOIL, WINDOW ANTI-ICE SPARE FUSES . .							5199	1
3	4574	. HOLDER, SPARE FUSE (V71400) . . . . .							5199	2
		. ATTACHING PARTS								
	NAS601-8P	. SCREW . . . . .							5199	2
	NAS679A06W	. NUT . . . . .							5199	2
4	BACM10W6AJ	. MARKER-ALUMINUM FOIL, WINDOW ANTI-ICE FUSE 5 AMP. . .							5199	1
5	BAC27CEE684	. MARKER-ALUMINUM FOIL, (C2013) . . . . .							5199	1
6	BAC27CEE685	. MARKER-ALUMINUM FOIL, (C2014) . . . . .							5199	1
7	MDX5	. FUSE, (V71400) . . . . .							5199	4
8	HKL	. HOLDER, FUSE (V71400) . . . . .							5199	2
9	BAC27CEE1144	. DECAL, A26. . . . .							5199	1
		. FOR REFERENCE TO OTHER SHIELD DETAILS, SEE NHA. . . .							5199	

MISSING ITEM NUMBERS ARE NOT APPLICABLE

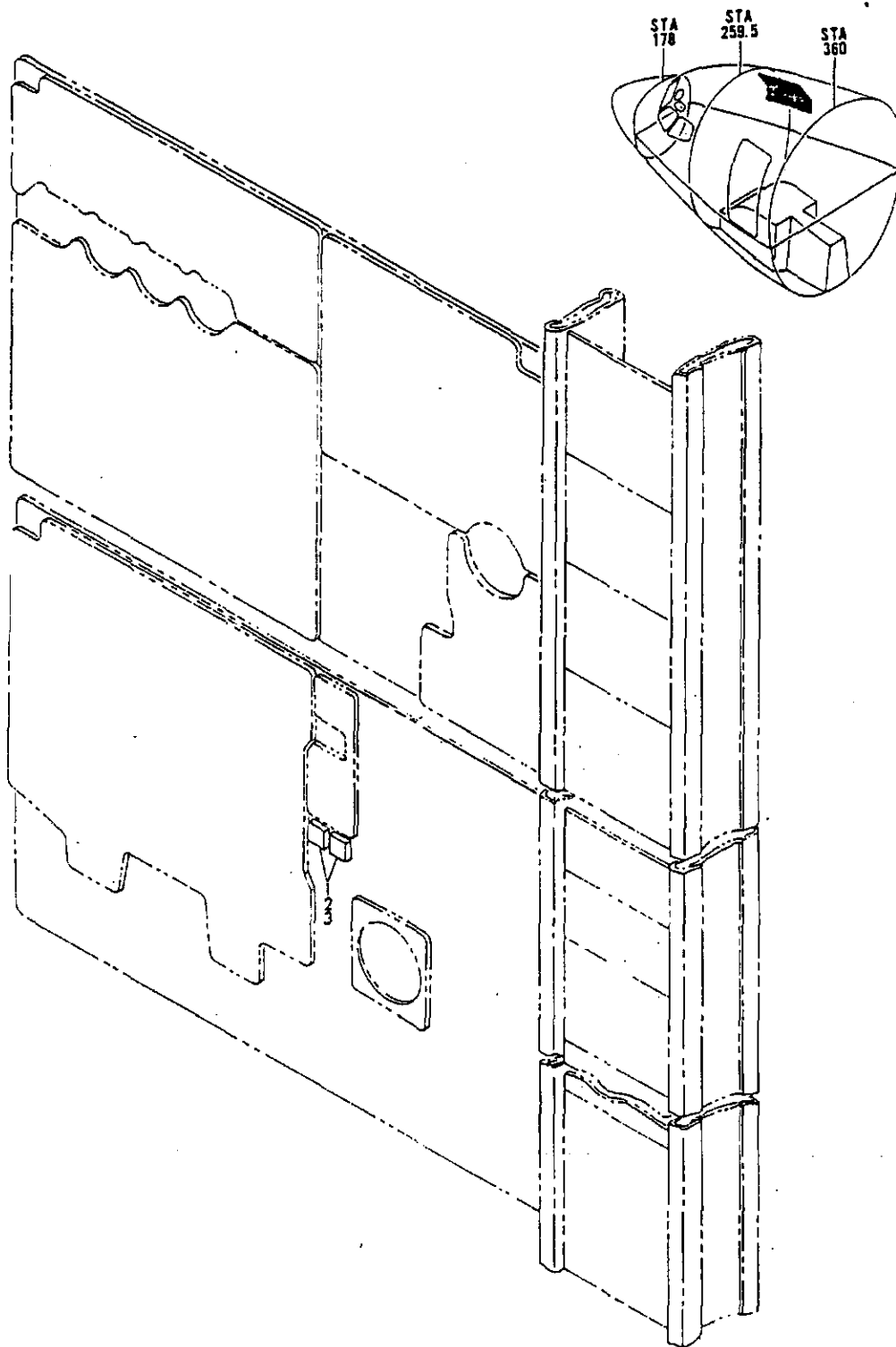


FIGURE 7K. PANEL INSTL, FLIGHT ENGINEERS LOWER (ICE AND RAIN PROTECTION ONLY)



**PARTS CATALOG**

FIGURE & ITEM NO.	MANUFACTURER'S PART NUMBER	NOMENCLATURE							EFF FROM TO	UNITS PER ASSY	
		1	2	3	4	5	6	7			
R R R R R	7K	65-58398-1	PANEL INSTL, FLIGHT ENGINEERS LOWER (ICE AND RAIN . . . PROTECTION ONLY) (DELETED BY RAF 7211.019-225) (SEE 25-1, FIG. 1K, ITEM 5)							0150	RF
		361-39-11-74192-001	PANEL INSTL, FLIGHT ENGINEERS LOWER (ICE AND RAIN . . . PROTECTION ONLY) (VS2500) (ADDED BY RAF 7211.019-225) (SEE 25-1, FIG. 1K, ITEM 5)							0150	RF
	1	515-1032-005	. CAP, LIGHT (V81590) . . . . .							0150	2
	2	1864	. LAMP, INCANDESCENT (V08806) . . . . .							0150	2
	3	65-58398-13	. UNIT ASSY, (ICE AND RAIN PROTECTION ONLY) . . . . .							0150	RF
	192-1032-005	. . . BASE, LIGHT (V81590). . . . .							0150	2	
		. FOR REFERENCE TO OTHER PANEL DETAILS, SEE NHA . . . . .							0150		

MISSING ITEM NUMBERS ARE NOT APPLICABLE

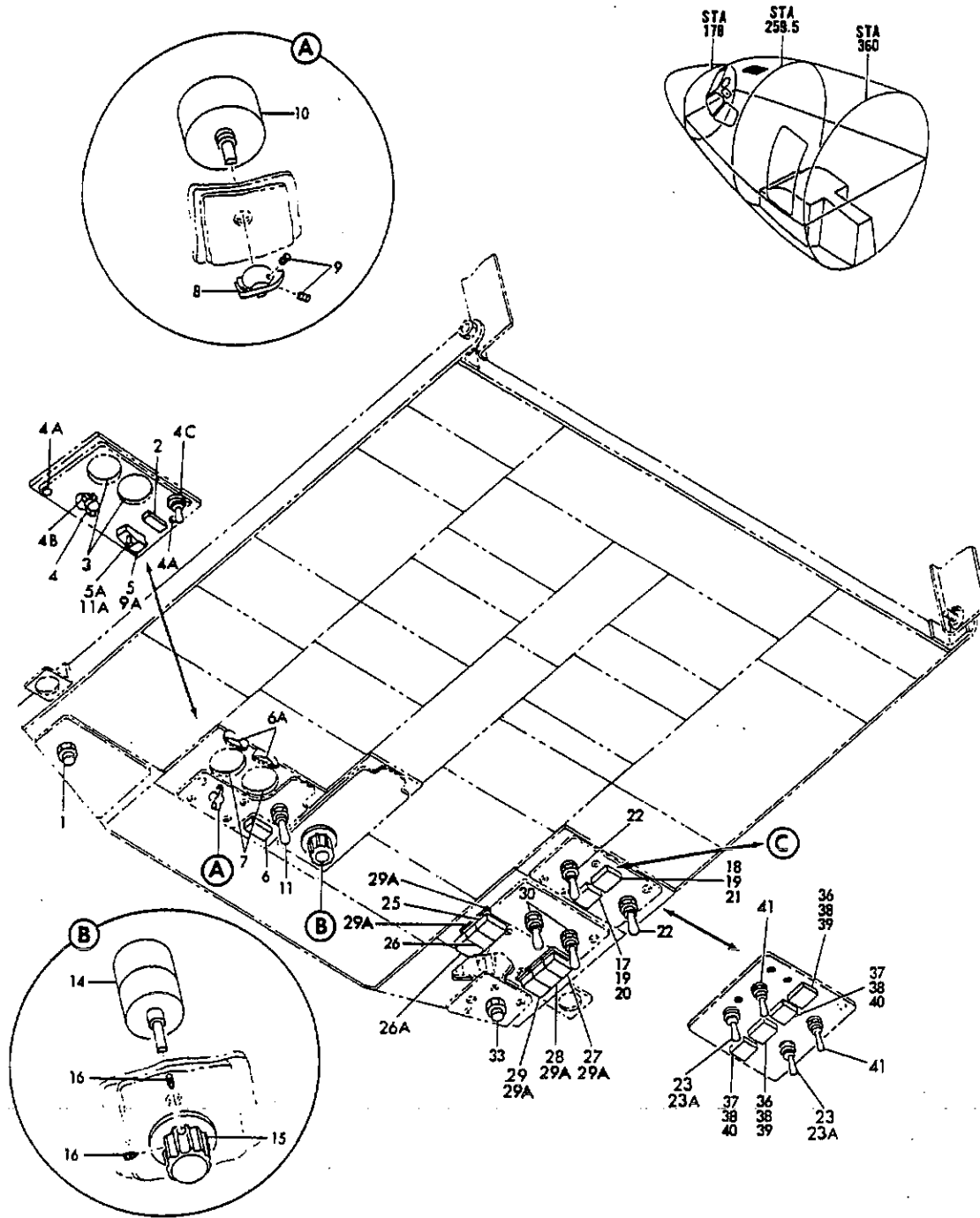


FIGURE 38. MODULE INSTL. P13 PILOTS OVERHEAD (ICE AND RAIN PROTECTION ONLY)

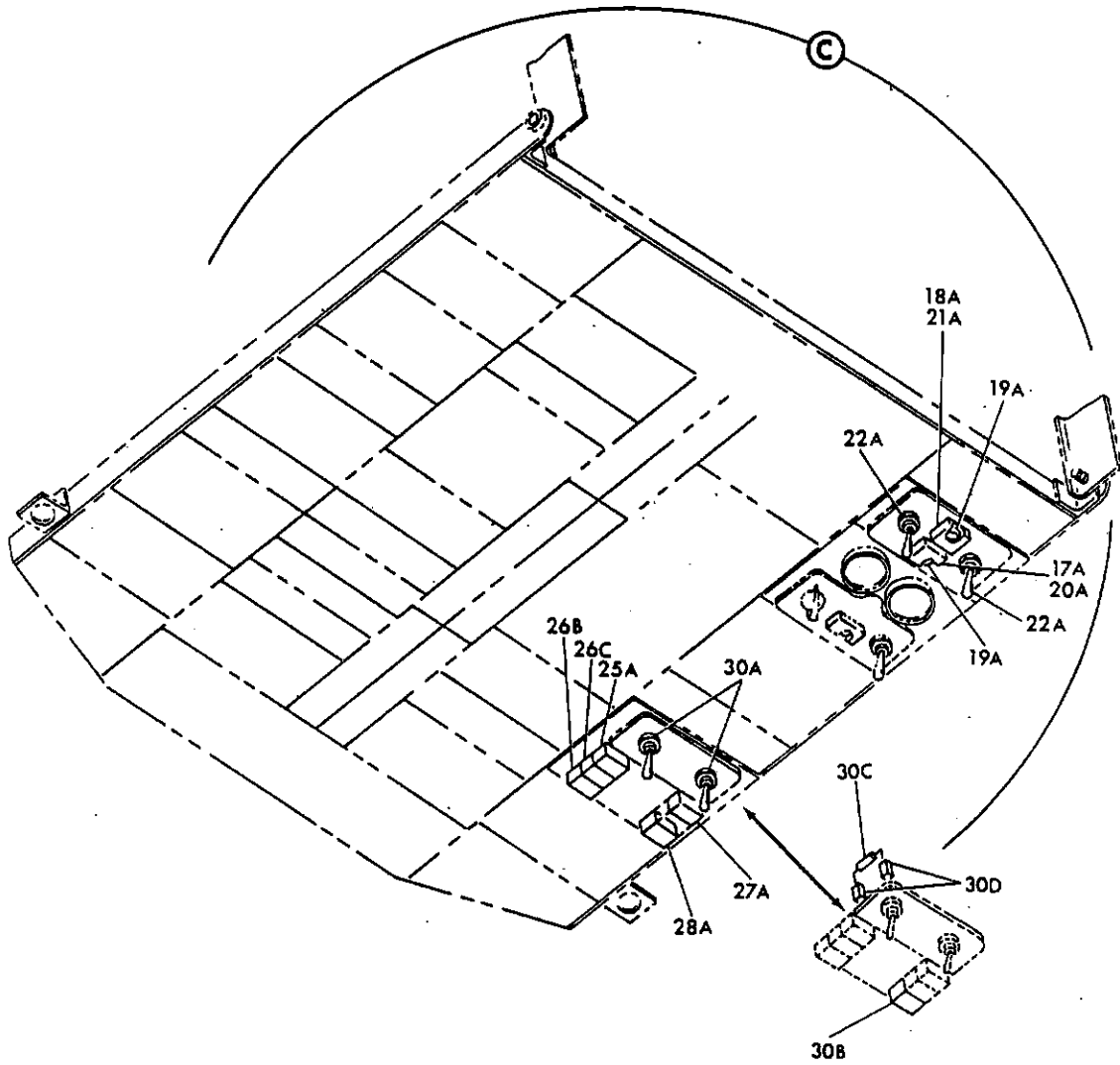


FIGURE 38. MODULE INSTL, P13 PILOTS OVERHEAD (ICE AND RAIN PROTECTION ONLY) (SHEET 2)



# PARTS CATALOG

FIGURE & ITEM NO.	MANUFACTURER'S PART NUMBER	1 2 3 4 5 6 7	NOMENCLATURE	EFF	UNITS
				FROM TO	PER ASSY
38	65-86177-2		MODULE INSTL, P13 PILOTS OVERHEAD (VARIABLE . . . . . DWG:65-86177-5011) (ICE AND RAIN PROTECTION ONLY) E	5199	RF
	69-46113-4		MODULE ASSY, P13G RAIN REPELLENT AND STICK SHAKER . . (ICE AND RAIN PROTECTION ONLY)	5199	RF
1	D20011-01GUBFM 69-46115-19		SWITCH, PUSHBUTTON (V81640) . . . . . MODULE ASSY, P13L WING ANTI-ICE (ICE AND RAIN . . . . . PROTECTION ONLY)	5199 5199	1 RF
6	318-630-1003-001		LIGHT ASSY, (V81590) . . . . .	5199	1
6A	BACC10EL2		CLAMP . . . . .	5199	2
7	163BL507B		INDICATOR, DUCT TEMP (V35918) . . . . .	5199	2
8	66-9039		KNOB ASSY . . . . .	5199	1
9	LL22XD62J3		SETSCREW, HEX SOCKET (V03038) . . . . .	5199	2
10	9S10		SWITCH, ROTARY (V35918) . . . . .	5199	1
11	MS24523-31 69-46163-18		SWITCH . . . . . MODULE ASSY, P13C CREW CALL AND WINDSHIELD WIPER (ICE AND RAIN PROTECTION ONLY)	5199 5199	1 RF
	AN960PDB16		WASHER . . . . .	5199	AR
14	10-3096-1		SWITCH, WINDSHIELD WIPER . . . . .	5199	1
15	66-12683-1		KNOB ASSY . . . . .	5199	1
16	NAS10B1-08D3L 69-46124-15		SCREW . . . . . MODULE ASSY, P13U WINDOW HEAT (ICE AND RAIN . . . . . PROTECTION ONLY)	5199 5199	2 1
17	515-1032-002		CAP, WARNING LIGHT (V81590) . . . . .	5199	1
18	515-1032-001		CAP, WARNING LIGHT (V81590) . . . . .	5199	1
19	1864		BULB, (V08806) . . . . .	5199	2
20	192-1032-002		BASE ASSY, WARNING LIGHT (V81590) . . . . .	5199	1
21	192-1032-001		BASE ASSY, WARNING LIGHT (V81590) . . . . .	5199	1
22	MS24525-21 69-50695-36		SWITCH . . . . . MODULE ASSY, P13Z PROBE HEATERS (ICE AND RAIN . . . . . PROTECTION ONLY) (DELETED BY SB 3363)	5199 5199	2 RF
	65C21713-56		MODULE ASSY, P13Z PROBE HEATERS (ICE AND RAIN . . . . . PROTECTION ONLY) (ADDED BY SB 3363)	5199	RF
25	318-630-1003-070		LIGHT ASSY, L. NO. 1 (V81590) (DELETED BY SB 3363)	5199	1
25	318-630-1003-143		LIGHT ASSY, L. NO. 1 (V81590) (ADDED BY SB 3363)	5199	1
26	318-630-1003-069		LIGHT ASSY, Q-INLET (V81590) (DELETED BY SB 3363)	5199	1
26	318-630-1003-144		LIGHT ASSY, Q-INLET (V81590) (ADDED BY SB 3363)	5199	1
27	318-630-1003-071		LIGHT ASSY, R. NO. 1 (V81590) (DELETED BY SB 3363)	5199	1
27	318-630-1003-145		LIGHT ASSY, R. NO. 1 (V81590) (ADDED BY SB 3363)	5199	1
28	318-630-1003-072		LIGHT ASSY, R. NO. 2 (V81590) (DELETED BY SB 3363)	5199	1
28	318-630-1003-146		LIGHT ASSY, R. NO. 2 (V81590) (ADDED BY SB 3363)	5199	1
29	318-630-1003-073		LIGHT ASSY, TEMP PROBE (V81590) (DELETED BY SB . . . . . 3363)	5199	1
29	318-630-1003-147		LIGHT ASSY, TEMP PROBE (V81590) (ADDED BY SB 3363)	5199	1
30	MS24525-23		SWITCH . . . . .	5199	2
	69-46126-37		MODULE ASSY, P13W RAIN REPELLENT (ICE AND RAIN . . . . .	5199	RF
33	D20011-01GUBFM		SWITCH, PUSHBUTTON (V81640) . . . . . FOR REFERENCE TO OTHER MODULE DETAILS, SEE NHA . . . . .	5199 5199	1

MISSING ITEM NUMBERS ARE NOT APPLICABLE

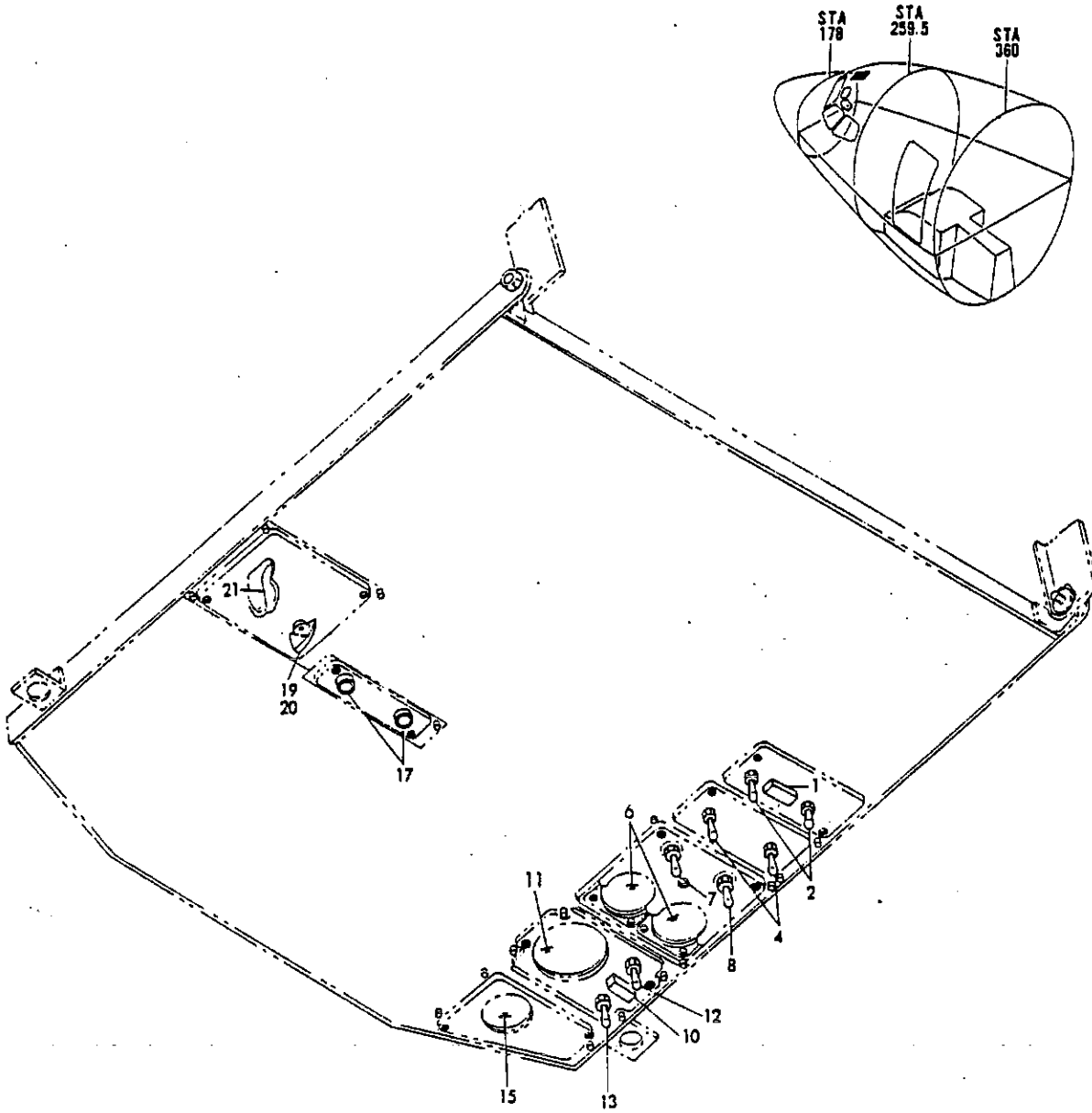


FIGURE 39. MODULE INSTL, P13 PILOT'S OVERHEAD (ICE AND RAIN PROTECTION ONLY)

# BOEING

## 707

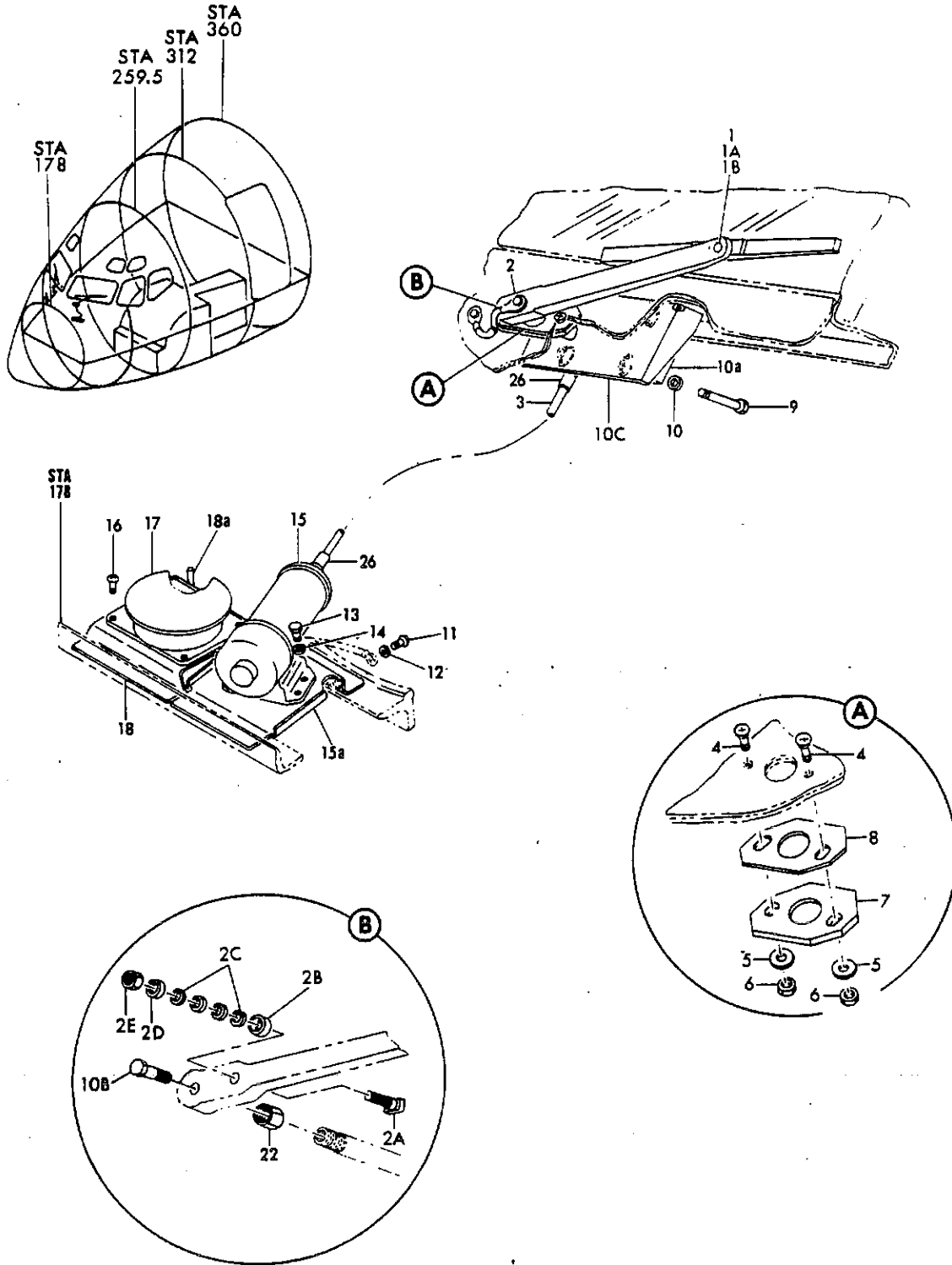
### PARTS CATALOG (MAINTENANCE)

FIGURE & ITEM NO.	MANUFACTURER'S PART NUMBER	NOMENCLATURE							EFF FROM TO	UNITS PER ASSY	
		1	2	3	4	5	6	7			
R R	39	65-58786-1	MODULE INSTL, P13 PILOTS OVERHEAD (ICE AND RAIN . . . . . PROTECTION ONLY) (DELETED BY MOD 7211.019-225) (SEE 25-1, FIG. 1K, ITEM 6)							0150	RF
		391-31-10-74168-001	MODULE INSTL, P13 PILOTS OVERHEAD (ICE AND RAIN . . . . . PROTECTION ONLY) (VS2500) (65-58786-1 MODIFIED BY MOD 7211.019-225) (SEE 25-1, FIG. 1K, ITEM 6)							0103	RF
		391-31-10-74168-003	MODULE INSTL, P13 PILOTS OVERHEAD (ICE AND RAIN . . . . . PROTECTION ONLY) (VS2500) (65-58786-1 MODIFIED BY MOD 7211.019-225) (SEE 25-1, FIG. 1K, ITEM 6)							0450	RF
		69-46123-4	MODULE ASSY, P13T Q-INLET (ICE AND RAIN PROTECTION ONLY)							0150	RF
	1	319-629-1004-067	. . . LIGHT ASSY, (V81590).							0150	1
	2	MS24523-23	. . . SWITCH.							0150	2
		69-46124-5	MODULE ASSY, P13U WINDOW HEAT (ICE AND RAIN . . . . . PROTECTION ONLY)							0150	RF
	4	MS24660-21A	. . . SWITCH.							0150	2
		69-46125-7	MODULE ASSY, P13V PITOT HEAT (ICE AND RAIN . . . . . PROTECTION ONLY)							0150	RF
	6	8AW43AAA225	. . . AMMETER, (V97424)							0150	2
		AN507B632R12	ATTACHING PARTS SCREW							0150	8
	7	MS24524-24	. . . SWITCH.							0150	1
	8	MS24525-21	. . . SWITCH.							0150	1
		69-46115-7	MODULE ASSY, P13L WING ANTI-ICE (ICE AND RAIN . . . . . PROTECTION ONLY)							0150	RF
	10	319-629-1004-001	. . . LIGHT ASSY, (V81590).							0150	1
	11	77C10	. . . INDICATOR, DUCT TEMPERATURE (V35918).							0150	1
		AN507B632R12	ATTACHING PARTS SCREW							0150	4
	12	MS24523-31	. . . SWITCH.							0150	1
	13	MS24524-23	. . . SWITCH.							0150	1
		69-52097-1	MODULE ASSY, P13W VU METER (ICE AND RAIN PROTECTION ONLY)							0150	RF
	15	RDC59-7041	. . . METER, VU (V11707).							0150	1
	AN507B632R12	ATTACHING PARTS									
	NAS679A06W	SCREW							0150	4	
		NUT							0150	4	
	69-52341-1	MODULE ASSY, P13G RAIN REPELLENT (ICE AND RAIN . . . . . PROTECTION ONLY)							0150	RF	
17	020011-01GUBFM	. . . SWITCH, PUSHBUTTON (V81640)							0150	2	
	69-52340-1	MODULE ASSY, P13E SPOILER AND WINDSHIELD WIPER (ICE AND RAIN PROTECTION ONLY) (DELETED BY RAF MOD 7211-019-4)							0150	RF	
	391-30-40-74169-001	MODULE ASSY, P13E RAIN REPELENT (ICE AND RAIN . . . . . PROTECTION ONLY) (V20031) (ALTERED FROM 69-52340-1) (ADDED BY RAF MOD 7211.019-4)							0150	RF	
19	BACK20E2	. . . KNOB ASSY, LARGE POINTER.							0150	1	
20	MS51973-18	. . . SETSCREW.							0150	2	
21	10-3096-1	. . . SWITCH, CONTROL							0150	1	
		FOR REFERENCE TO OTHER MODULE DETAILS, SEE NHA.							0150		

MISSING ITEM NUMBERS ARE NOT APPLICABLE

**BOEING** *707*  
*Intercontinental*   
**PARTS CATALOG**

**SECTION 04**  
**WINDSHIELD**



30-04-01 707-259

FIGURE 1. WIPER INSTL, WINDSHIELD



**PARTS CATALOG**

FIGURE & ITEM NO.	MANUFACTURER'S PART NUMBER	NOMENCLATURE							EFF FROM TO	UNITS PER ASSY
		1	2	3	4	5	6	7		
1	50-9333-3	WIPER INSTL, WINDSHIELD LH (SEE 25-1, FIG. 1, ITEM 46, 25-1, FIG. 1B, ITEM 45, 25-1, FIG. 1C, ITEM 50, 25-1, FIG. 1D, ITEM 48, 25-1, FIG. 1E, ITEM 41, 25-1, FIG. 1F, ITEM 38, 25-1, FIG. 1G, ITEM 41, 25-1, FIG. 1H, ITEM 43, 25-1, FIG. 1J, ITEM 40, 25-1, FIG. 1K, ITEM 39, 25-1, FIG. 2B, ITEM 38, 25-1, FIG. 2C, ITEM 38, 25-1, FIG. 2D, ITEM 34, 25-1, FIG. 2E, ITEM 23, 25-1, FIG. 2F, ITEM 41, 25-1, FIG. 2G, ITEM 39 25-1, FIG. 2H, ITEM 41 AND 25-1, FIG. 2J, ITEM 1)								RF
	50-9333-4	WIPER INSTL, WINDSHIELD RH (SEE 25-1, FIG. 1, ITEM 47, 25-1, FIG. 1B, ITEM 46, 25-1, FIG. 1C, ITEM 51, 25-1, FIG. 1D, ITEM 49, 25-1, FIG. 1E, ITEM 42, 25-1, FIG. 1F, ITEM 38, 25-1, FIG. 1G, ITEM 42, 25-1, FIG. 1H, ITEM 44, 25-1, FIG. 1J, ITEM 41, 25-1, FIG. 1K, ITEM 40, 25-1, FIG. 2B, ITEM 39, 25-1, FIG. 2C, ITEM 39, 25-1, FIG. 2D, ITEM 35, 25-1, FIG. 2E, ITEM 24, 25-1, FIG. 2F, ITEM 41, 25-1, FIG. 2G, ITEM 39, 25-1, FIG. 2H, ITEM 41 AND 25-1, FIG. 2J, ITEM 1)								RF
R	1	XW20891-150-75	. BLADE ASSY, (V70255).						0150	1
R	M 1A	AN365-832	. NUT						0150	1
	M 1B	ANCO62072	. WASHER.							1
R	2	XW20437-7-1700B4	. ARM ASSY, (V70255).						0150	1
	M 2A	ANCO5135A2	. BOLT.							1
	M 2B	A313A	. CUP, (V70255)							1
	M 2C	W20490	. WASHER, (V70255).							4
	M 2D	ANCO6206A9	. WASHER.							1
	M 2E	AN365-428	. NUT							1
	3	10-3096-4	. DRIVE ASSY, ELECTRIC WINDSHIELD WIPER FLEX.							1
	4	NAS517-3-5	. SCREW							2
	5	AN960D10	. WASHER.							2
	6	NAS679A3W	. NUT							2
	7	63-1339	. PLATE, WINDSHIELD WIPER CONVERTER SHAFT							1
	8	63-1340-1	. GASKET, WINDSHIELD WIPER CONVERTER SHAFT.							1
	9	AN3-15A	. BOLT.							4
	10	AN960D10	. WASHER.							4
	10A	10-3096-16	. CONVERTER ASSY, ELECTRIC (SAME AS XW20345-318-36. (V70255))							1
	10A	XW20345-318-36	. CONVERTER ASSY, (V70255) (SAME AS BAC SPEC NO. 10-3096-16)							RF
	M 10B	AN73-4	. BOLT.							1
	10C	66-1503-1	. BRACKET ASSY, CONVERTER (LH ONLY)							1
	10C	66-1503-2	. BRACKET ASSY, CONVERTER (RH ONLY)							1
	11	NAS603-5	. SCREW							1
	12	AN960D10	. WASHER.							1
	13	AN3-4A	. BOLT.							3
	14	AN960D10	. WASHER.							3
R	15	10-3096-3	. MOTOR ASSY, ELECTRIC. (OPTIONAL AND FOR REPLACEMENT ORDER 10-3096-19)						0150	1
R	15	10-3096-19	. MOTOR ASSY, ELECTRIC. (OPTIONAL TO AND REPLACEMENT FOR 10-3096-3)						0150	1
R	15	10-3096-19	. MOTOR ASSY, ELECTRIC.						5199	1
R	15A	66-1394-1	. BRACKET ASSY, MOTOR MOUNT (LH ONLY)							1
	15A	66-1394-2	. BRACKET ASSY, MOTOR MOUNT (RH ONLY)							1
	16	NAS604-10	. SCREW							4
	17	10-3096-2	. BOX ASSY, ELECTRIC WINDSHIELD WIPER RESISTOR.							1
	18	66-1365	. BRACKET ASSY, RESISTOR BOX.							1

MISSING ITEM NUMBERS ARE NOT APPLICABLE

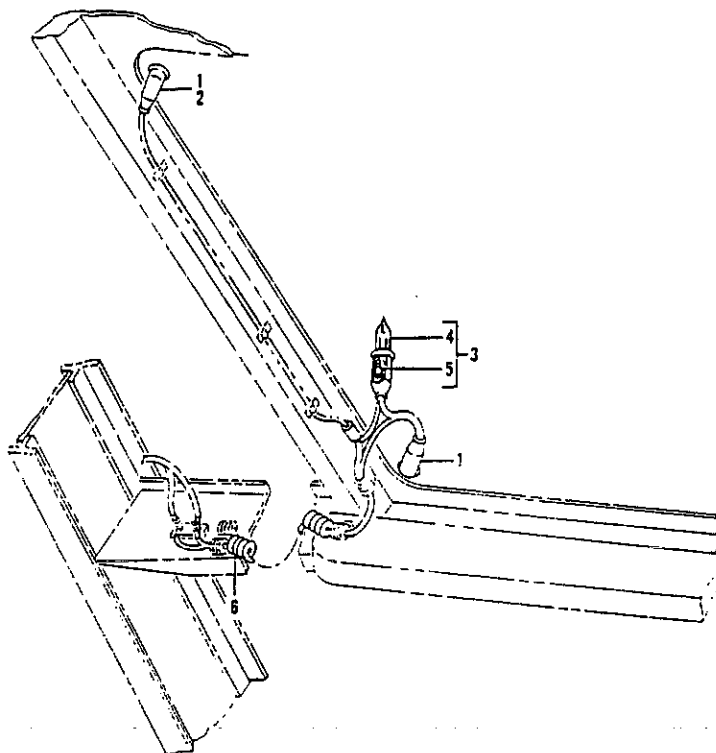
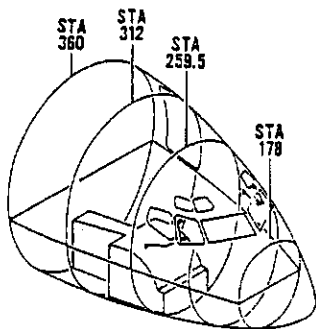


FIGURE 3. BUNDLE ASSY, NO. 2 SLIDING WINDOW ANTI-ICING ELECTRICAL  
 WIRE ASSY, CAPTAIN AND FIRST OFFICER NO. 2 WINDOW ELECTRICAL PROVISIONS



**PARTS CATALOG**

FIGURE & ITEM NO.	MANUFACTURER'S PART NUMBER	NOMENCLATURE							EFF FROM TO	UNITS PER ASSY
		1	2	3	4	5	6	7		
3	69-2703-5	BUNDLE ASSY, NO. 2 SLIDING WINDOW ANTI-ICE ELECTRICAL . . . . .								RF
	69-2703-6	(FOR SPARES ONLY) (LH) (SEE 56-1, FIG. 3, ITEM 2A)								RF
	69-16699-3	BUNDLE ASSY, NO. 2 SLIDING WINDOW ANTI-ICE ELECTRICAL . . . . .								RF
	69-16699-4	(FOR SPARES ONLY) (RH) (SEE 56-1, FIG. 3, ITEM 2A)								RF
1	MS25171-1S	WIRE ASSY, CAPTAIN AND FIRST OFFICER NO. 2 WINDOW . . . . .								
	MS25171-1S	ELECTRICAL PROVISIONS (LH) (SEE 56-1, FIG. 4, ITEM 20)								
2	MS25171-1S	WIRE ASSY, CAPTAIN AND FIRST OFFICER NO. 2 WINDOW . . . . .								
	MS25171-1S	ELECTRICAL PROVISIONS (RH) (SEE 56-1, FIG. 4, ITEM 20)								
6	69-2703-3	. NIPPLE, (USED ON 69-2703, -1, -5 AND -6) . . . . .								2
	69-2703-3	. NIPPLE, (USED ON 69-16699-3 AND -4) . . . . .								1
6	69-63683-1	. CORD, NO. 2 SLIDING WINDOW ANTI-ICE ELECTRICAL . . . . .								1
		RETRACTILE (USED ON 69-2703, -1, -5 AND -6) (FOR REPLACEMENT ORDER; 69-63683-1)								
		. CORD ASSY . . . . .								1
		(OPTIONAL TO AND REPLACEMENT FOR 69-2703-3)								

MISSING ITEM NUMBERS ARE NOT APPLICABLE

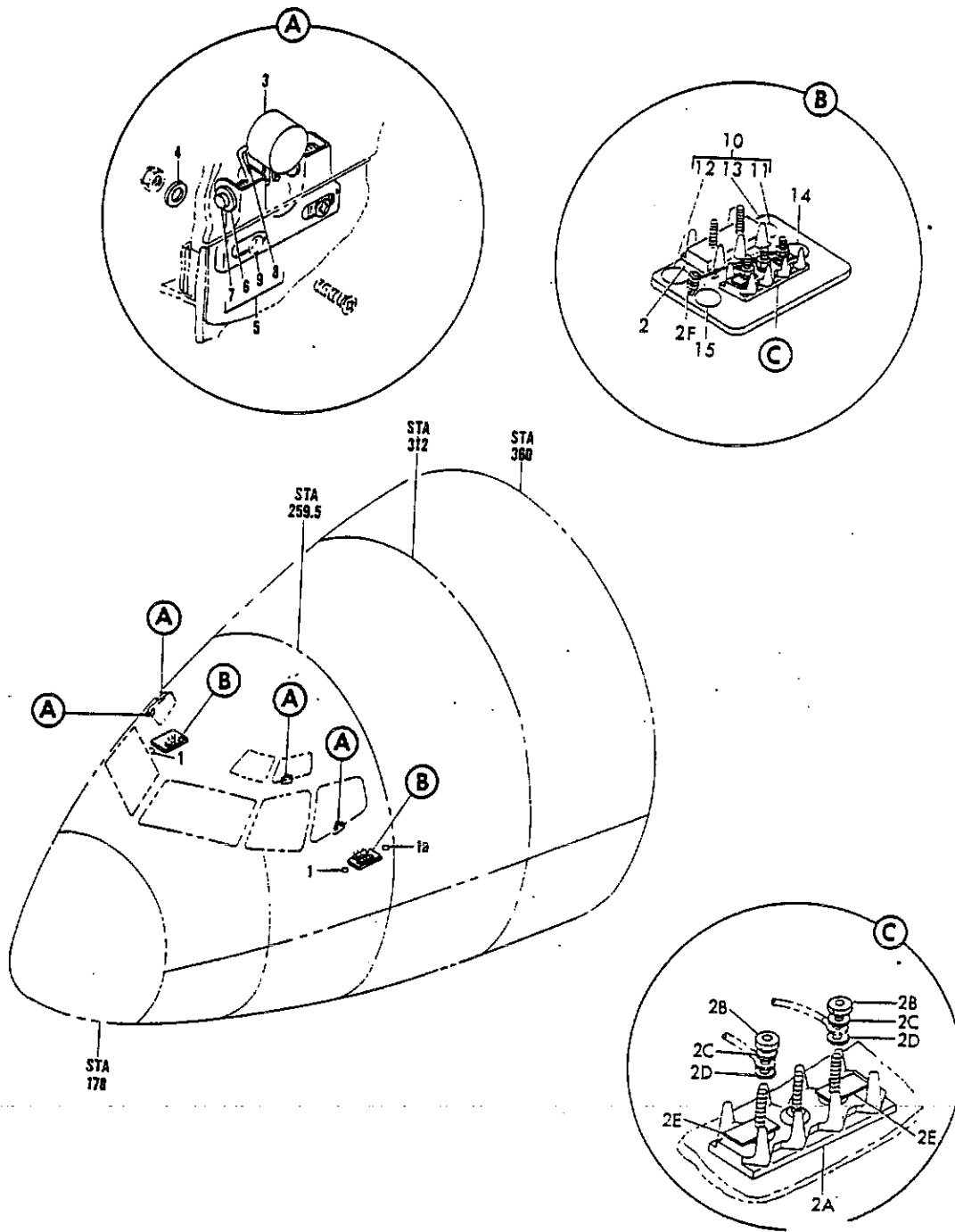


FIGURE 4. SWITCH INSTL, NO. 3 AND 5 NESA WINDOWS



**PARTS CATALOG**

FIGURE & ITEM NO.	MANUFACTURER'S PART NUMBER	1 2 3 4 5 6 7	NOMENCLATURE	EFF FROM TO	UNITS PER ASSY
4	65-3336		SWITCH INSTL, NO. 3 AND 5 NESA WINDOWS (SEE 24-3, FIG. 1A, ITEM 25, 24-3, FIG. 1B, ITEM 24, 24-3, FIG. 1C, ITEM 21 AND 24-3, FIG. 12 ITEM 55)		RF
1	NAS557-48	.	GROMMET . . . . .		2
1A	NAS557-68	.	GROMMET . . . . .		1
2	MS27212-2-2	.	TERMINAL BOARD ASSY . . . . .		2
			ATTACHING PARTS		
	NAS600-12P	.	SCREW . . . . .		4
	NAS43DD0-25	.	SPACER. . . . .		4
	NAS679A04W	.	NUT . . . . .		4
3	10-1468-1	.	SWITCH, NESA GLASS WINDOW HEAT CONTROL THERMAL. . . . . (WINDOW NO. 3)		2
3	10-1468	.	SWITCH, NESA GLASS WINDOW HEAT CONTROL THERMAL. . . . . (WINDOW NO. 5)		2
4	AN960D10L	.	WASHER, (WINDOW NO. 3). . . . .		4
4	AN960D10L	.	WASHER, (WINDOW NO. 5). . . . .		4
5	66-13907-1	.	BRACKET ASSY, THERMAL SWITCH SPRING CLAMP . . . . .		4
6	AN960D10L	.	WASHER. . . . .		2
7	AN393-27	.	PIN . . . . .		2
8	6-54994-1	.	SPRING, THERMAL SWITCH TORSION. . . . .		1
9	66-13907-2	.	BRACKET, THERMAL SWITCH SPRING CLAMP. . . . .		1
10	63-9253-2	.	BRACKET ASSY, PLACARD SUPPORT . . . . .		2
11	BACM10N00-2AAS	.	METAL-CAL, NUMBER 2 . . . . .		1
12	BACM10N00-2PP	.	METAL-CAL, NUMBER 1 . . . . .		1
13	63-9253-3	.	BRACKET, PLACARD SUPPORT. . . . .		2

MISSING ITEM NUMBERS ARE NOT APPLICABLE

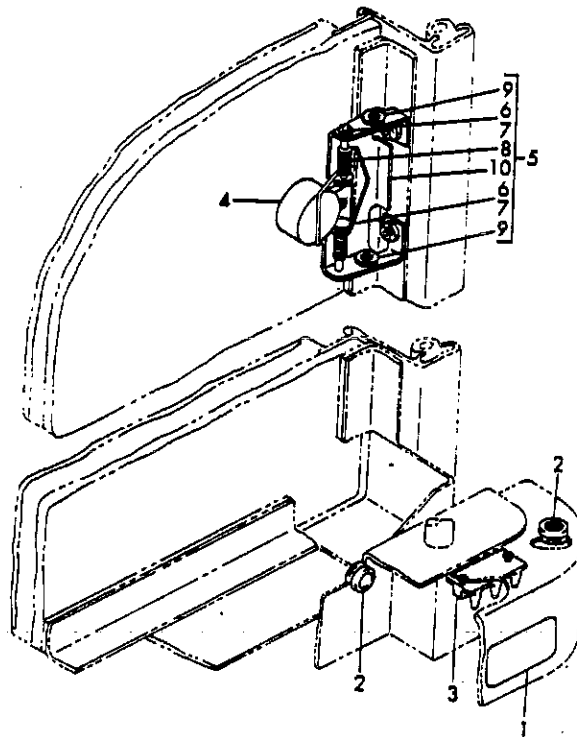
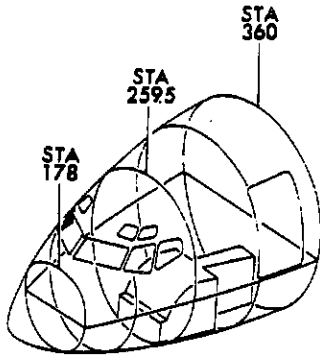


FIGURE 4A. SWITCH INSTL, NO. 2 WINDOW HEAT CONTROL



**PARTS CATALOG**

FIGURE & ITEM NO.	MANUFACTURER'S PART NUMBER	NOMENCLATURE							EFF FROM TO	UNITS PER ASSY
		1	2	3	4	5	6	7		
4A	69-20829-2	SWITCH INSTL, NO. 2 WINDOW HEAT CONTROL . . . . .							5199	
		. SWITCH INSTL, NO. 2 WINDOW HEAT CONTROL (RH) (ADDED . . . . .							5199	RF
		BY SB 2101) (SEE 56-1, FIG. 3, ITEM 106)								
1	BACM9W4G	. . . SCOTCH-CAL. . . . .							5199	1
2	BACG20C13	. . . GROMMET . . . . .							5199	2
3	MS25123-1-2	. . . TERMINAL BOARD ASSY . . . . .							5199	1
		ATTACHING PARTS								
	NAS514P440-6	. . . SCREW . . . . .							5199	2
	NAS679AD4W	. . . NUT . . . . .							5199	2
	69-20829-4	. SWITCH INSTL, NO. 2 WINDOW HEAT CONTROL (RH) (ADDED . . . . .							5199	RF
		BY SB 2101) (SEE 56-1, FIG. 3, ITEM 107)								
4	10-1468-10	. . . SWITCH, NESA GLASS WINDOW HEAT CONTROL THERMAL. . . . .							5199	1
5	66-21461-1	. . . BRACKET ASSY, THERMAL SWITCH SPRING CLAMP . . . . .							5199	1
6	MS20392-2C33	. . . PIN . . . . .							5199	2
7	AN960D10L	. . . WASHER. . . . .							5199	2
8	6-54994-1	. . . SPRING, THERMAL SWITCH TORSION. . . . .							5199	1
9	NAS1368N4A	. . . GROMMET . . . . .							5199	2
10	66-21461-2	. . . BRACKET, THERMAL SWITCH SPRING CLAMP. . . . .							5199	1

MISSING ITEM NUMBERS ARE NOT APPLICABLE

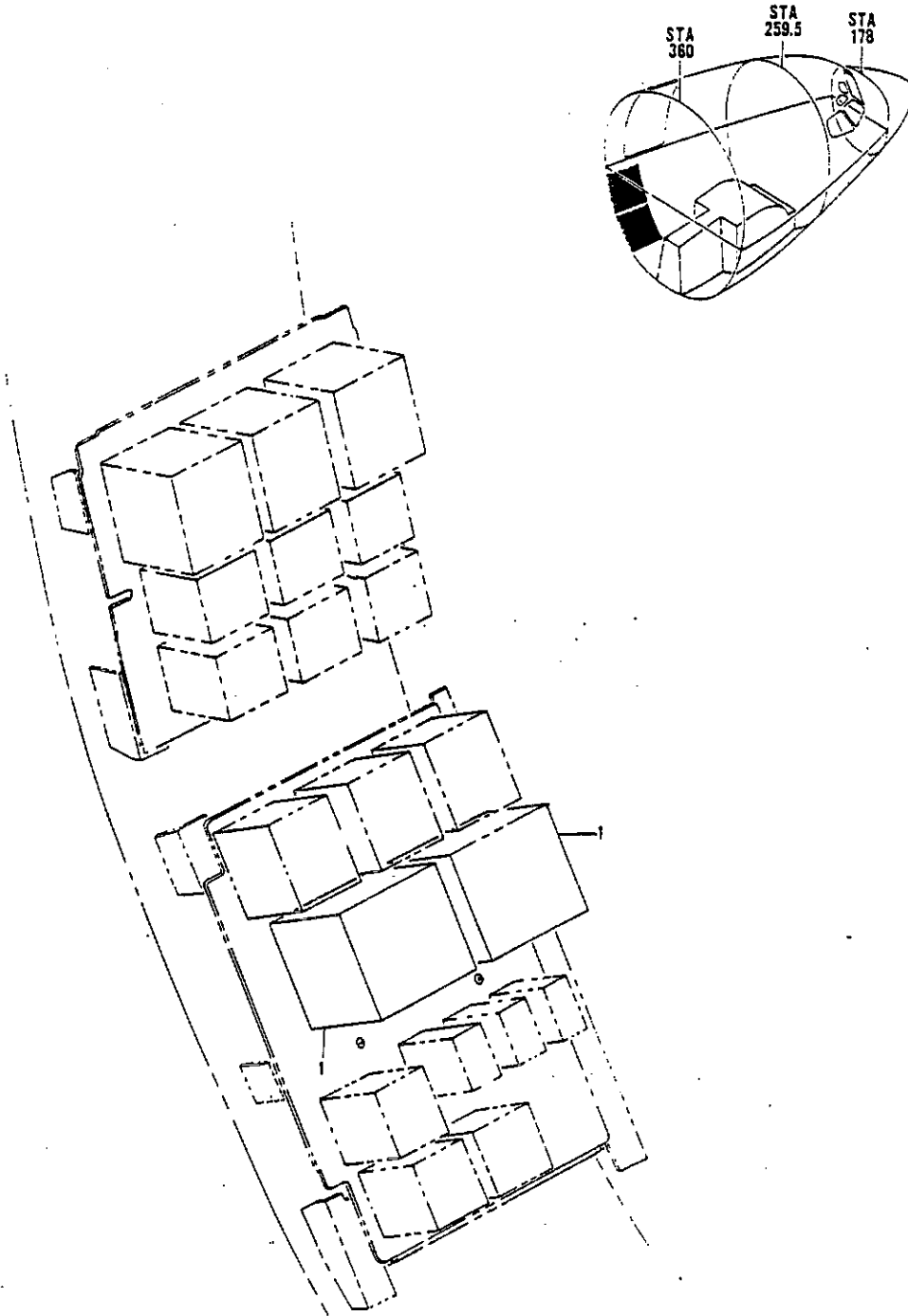


FIGURE 5. PANEL INSTL, STATION 344 TO 360 TRANSFORMER (ICE AND RAIN PROTECTION ONLY)



**PARTS CATALOG**

FIGURE & ITEM NO.	MANUFACTURER'S PART NUMBER	NOMENCLATURE							EFF FROM TO	UNITS PER ASSY	
		1	2	3	4	5	6	7			
R R R R R	5	50-11348	PANEL INSTL, STATION 344 TO 360 TRANSFORMER (ICE AND . . .							0150	RF
			RAIN PROTECTION ONLY) (SEE 24-3, FIG. 1A, ITEM 26, . . .								
	1	10-3260-6	24-3, FIG. 1B, ITEM 25 AND 24-3, FIG. 1C, ITEM 22) . . .							0150	2
		NAS604-B	. AUTOTRANSFORMER, WINDSHIELD ANTI-ICE. . . . .							0150	8
			ATTACHING PARTS								
			. SCREW . . . . .							0150	8
			. FOR REFERENCE TO OTHER PANEL DETAILS, SEE NHA . . . .							0150	

MISSING ITEM NUMBERS ARE NOT APPLICABLE

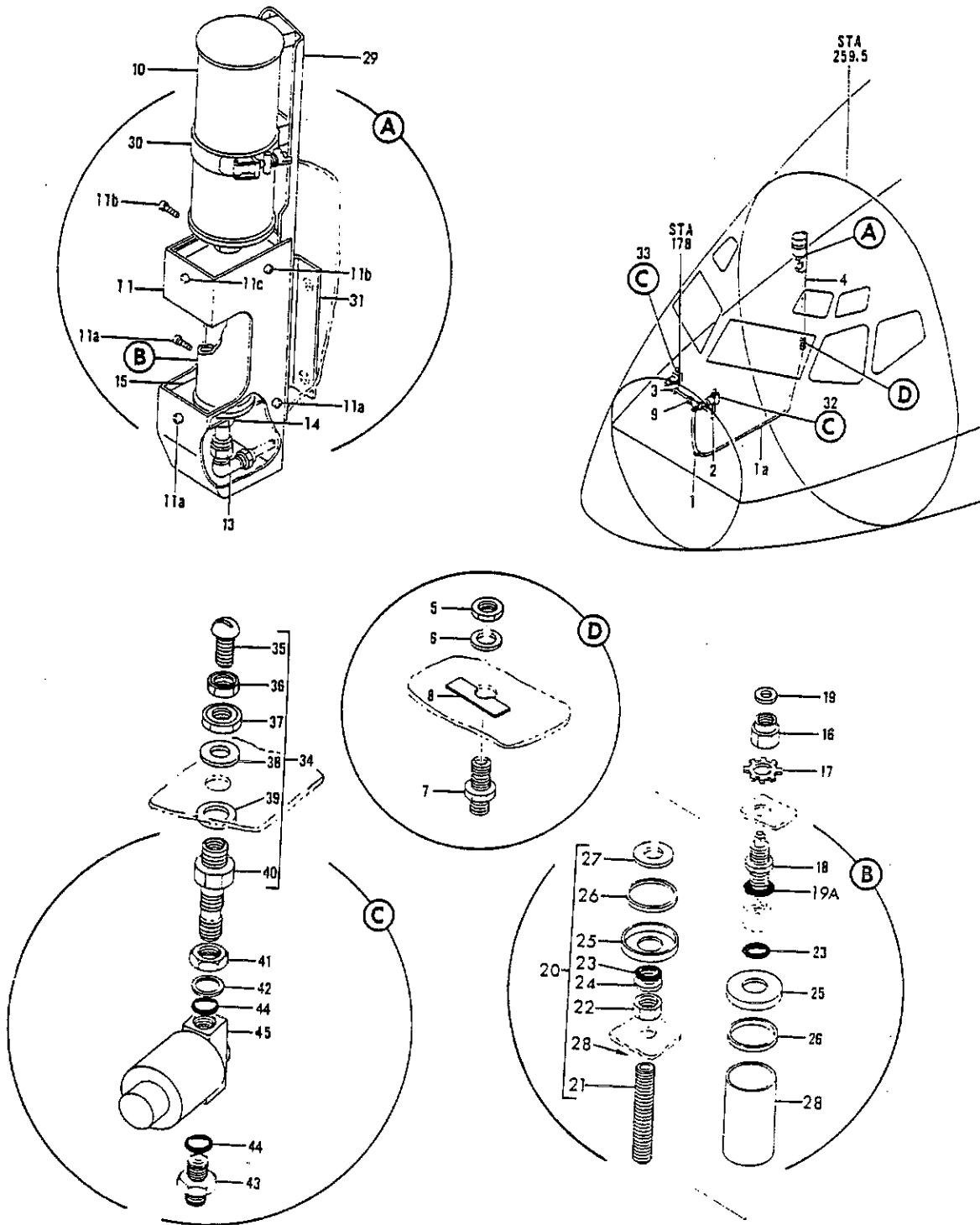


FIGURE 10. SYSTEM INSTL, RAIN REPELLENT (ICE AND RAIN PROTECTION ONLY)

FIGURE & ITEM NO.	MANUFACTURER'S PART NUMBER	NOMENCLATURE							EFF FROM TO	UNITS PER ASSY
		1	2	3	4	5	6	7		
10	69-30437-5	SYSTEM INSTL, RAIN REPELLENT (ICE AND RAIN PROTECTION ONLY) (SEE 25-1, FIG. 1B, ITEM 125, 25-1, FIG. 1C, ITEM 146, 25-1, FIG. 1D, ITEM 139, 25-1, FIG. 1E, ITEM 126, 25-1, FIG. 1F, ITEM 103, 25-1, FIG. 1G, ITEM 110, 25-1, FIG. 1H, ITEM 131, 25-1, FIG. 1J, ITEM 133, 25-1, FIG. 1K, ITEM 123, 25-1, FIG. 2B, ITEM 127, 25-1, FIG. 2C, ITEM 115, 25-1, FIG. 2D, ITEM 96, 25-1, FIG. 2E, ITEM 68 AND 25-1, FIG. 2H, ITEM 123)								RF
	69-30443-8	. TUBING INSTL, RAIN REPELLENT SYSTEM . . . . .								1
1	BACG20Z314B	. GROMMET . . . . .								1
1A	M666049-4-1860	. HOSE ASSY, (V00624) . . . . .								1
2	69-30443-4	. TUBE ASSY, RAIN REPELLENT SYSTEM 1/4 .02B AISI321 (OPTIONAL AISI347)								1
3	69-30443-5	. TUBE ASSY, RAIN REPELLENT SYSTEM 1/4 .02B AISI321 (OPTIONAL AISI347)								1
4	69-30443-10	. TUBE ASSY, RAIN REPELLENT SYSTEM 1/4 .02B AISI321 (OPTIONAL AISI347)								1
	BACS13AP4W	. SLEEVE . . . . .								2
	MS21921-4J	. NUT . . . . .								2
5	AN924-4C	. NUT . . . . .								1
6	AN960D716	. WASHER . . . . .								1
7	MS21924-4C	. UNION . . . . .								1
8	69-30443-9	. SHIM, RAIN REPELLENT SYSTEM . . . . .								1
9	MS21905-4C	. TEE . . . . .								1
10	65-38196-4	. CAN ASSY, PRESSURIZED KIT (OPTIONAL 65-38196-3 AND 65-38196-2) (OPTIONAL AND FOR REPLACEMENT ORDER 65-38196-5)								1
10	65-38196-3	. CAN ASSY, PRESSURIZED KIT (OPTIONAL TO 65-38196-4)								1
10	65-38196-2	. CAN ASSY, PRESSURIZED KIT (OPTIONAL TO 65-38196-4)								1
10	65-38196-5	. CAN ASSY, PRESSURIZED KIT (OPTIONAL TO AND REPLACEMENT FOR 65-38196-4)								1
	65-43497-7	. BRACKET AND VISUAL RESERVOIR INSTL, RAIN REPELLENT SYSTEM (ICE AND RAIN PROTECTION ONLY)								1
11	69-34533-5	. COVER ASSY, VISUAL RESERVOIR RAIN REPELLENT (ICE AND RAIN PROTECTION ONLY)								1
		ATTACHING PARTS								
11A	NAS603-6	. SCREW . . . . .								3
11B	NAS603-8	. SCREW . . . . .								2
11C	NAS603-9	. SCREW . . . . .								1
13	ER1833S04	. ELBOW, MANIFOLD 90 DEG (V92003) . . . . .								1
14	BACN1ODR4	. NUT . . . . .								1
15	66-22276-1	. BRACKET ASSY, RAIN REPELLENT SYSTEM . . . . .								1
16	69-27996-1	. NUT, RAIN REPELLENT CAN VALVE ADAPTER . . . . .								1
17	BACW10A02	. WASHER . . . . .								1
18	69-27995-1	. ADAPTER, RAIN REPELLENT CAN VALVE . . . . .								1
19	66-20263-1	. GASKET, RAIN REPELLENT RECEPTACLE . . . . .								1
20	69-34511-1	. RESERVOIR ASSY, RAIN REPELLENT VISUAL . . . . .								1
21	69-34510-1	. BOLT, RAIN REPELLENT RESERVOIR . . . . .								1
22	AN6289-4	. NUT . . . . .								1
23	MS28778-4	. PACKING . . . . .								2
24	MS28777-4	. RING . . . . .								1
25	66-22264-1	. CAP, RAIN REPELLENT RESERVOIR . . . . .								2
26	66-22266-1	. GASKET, RAIN REPELLENT RESERVOIR . . . . .								2
27	66-22267-2	. FLOAT . . . . .								1
28	66-22265-1	. SLEEVE, RAIN REPELLENT RESERVOIR . . . . .								1
29	69-34542-1	. BRACKET ASSY, RAIN REPELLENT RESERVOIR . . . . .								1
		ATTACHING PARTS								
	NAS603-6P	. SCREW . . . . .								3
30	69-34542-3	. CLAMP, RAIN REPELLENT RESERVOIR QUICK COUPLER . . . . .								1
31	65-43497-6	. BRACKET, SUPPORT . . . . .								1
		ATTACHING PARTS								
	NAS514P1032-7	. SCREW . . . . .								2
	NAS679A3W	. NUT . . . . .								2
32	65-43666-1	. NOZZLE INSTL, RAIN REPELLENT SYSTEM (LH) . . . . .								1
	65-43666-2	. NOZZLE INSTL, RAIN REPELLENT SYSTEM (RH) . . . . .								1
	65-43666-3	. UNIT ASSY, RAIN REPELLENT SYSTEM NOZZLE (LH ONLY) . . . . .								1

MISSING ITEM NUMBERS ARE NOT APPLICABLE

