

 **BOEING**  
707  
**PARTS CATALOG (MAINTENANCE)**

CHAPTER 75  
AIR  
TABLE OF CONTENTS

SECTION	FIGURE
75-01 ENGINE ANTI-ICING	
COWL ASSY, LARGE SECONDARY AIR INLET DOORS NOSE . . . . .	4A
EQUIPMENT AND DUCT INSTL, NOSE COWL THERMAL ANTI-ICING. . . . .	2
FAIRING ASSY, TURBOCOMPRESSOR INLET . . . . .	12
MODULE INSTL, P13 PILOTS OVERHEAD . . . . .	26
SCOOP INSTL, THERMAL ANTI-ICING VALVE NACA FLUSH TYPE . . . . .	9

**BOEING** *707* *Intercontinental*   
**PARTS CATALOG**

**SECTION 01**  
**ENGINE ANTI-ICING**

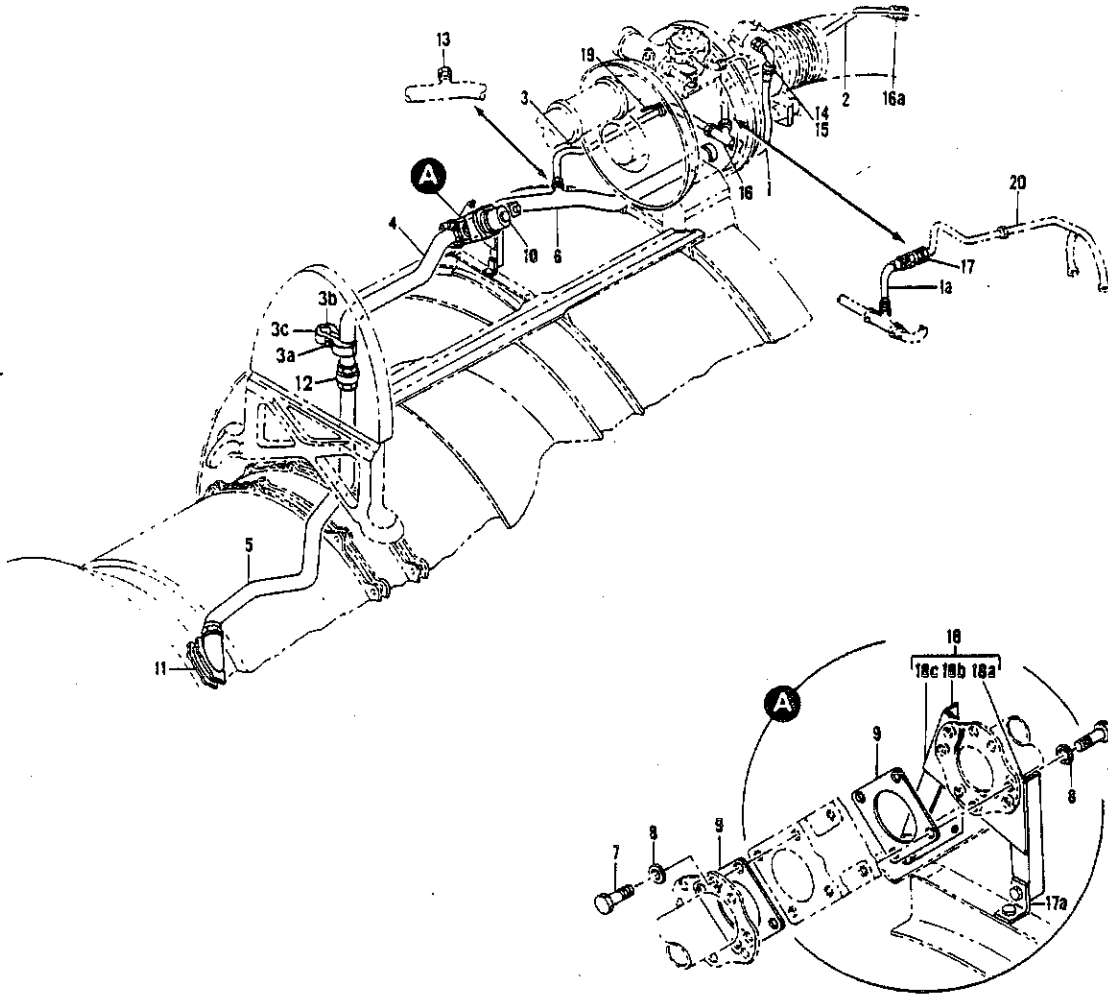


FIGURE 2. EQUIPMENT AND DUCT INSTL, NOSE COWL THERMAL ANTI-ICING



**PARTS CATALOG**

FIGURE & ITEM NO.	MANUFACTURER'S PART NUMBER	NOMENCLATURE	EFF FROM TO	UNITS PER ASSY
2	65-12248-18	EQUIPMENT AND DUCT INSTL, NOSE COWL THERMAL ANTI-ICING (ENGINE NO. 1) (SEE 71-1, FIG. 5, ITEM 25, 71-1, FIG. 5B, ITEM 54, 71-1, FIG. 5E, ITEM 68, 71-1, FIG. 5G, ITEM 63 AND 71-1, FIG. 5H, ITEM 54)		RF
	65-12248-17	EQUIPMENT AND DUCT INSTL, NOSE COWL THERMAL ANTI-ICING (ENGINES NO. 2, 3 AND 4) (SEE 71-1, FIG. 5, ITEM 25, 71-1, FIG. 5B ITEM 54, 71-1, FIG. 5E, ITEM 68, 71-1, FIG. 5G, ITEM 63 AND 71-1, FIG. 5H, ITEM 54)		RF
1	10-60110-12	. HOSE ASSY, TURBOCOMPRESSOR (USED ON 65-12248-17) . . . (ENGINES NO. 2 AND 3)		1
1	10-60110-12	. HOSE ASSY, TURBOCOMPRESSOR (USED ON 65-12248-17) . . . (ENGINE NO. 4)		1
1A	10-60110-21	. HOSE ASSY, TURBOCOMPRESSOR (USED ON 65-12248-17) . . . (ENGINES NO. 2 AND 3)		1
1A	10-60110-21	. HOSE ASSY, TURBOCOMPRESSOR (USED ON 65-12248-17) . . . (ENGINE NO. 4)		1
3	65-12248-19	. TUBE ASSY, DEICING 3/4 IN. .035 AISI304 (OPTIONALS. . AISI321, AISI347) (USED ON 65-12248-17) (ENGINES NO. 2 AND 3)		1
3	65-12248-19	. TUBE ASSY, DEICING 3/4 IN. .035 AISI304 (OPTIONALS. . AISI321, AISI347) (USED ON 65-12248-17) (ENGINE NO. 4)		1
	MS21921-12C	. . NUT . . . . .		2
	MS21922-12	. . SLEEVE . . . . .		2
3A	NAS1303-15	. BOLT . . . . .		1
3B	69-48864-1	. CLAMP ASSY, TUBING SUPPORT HALF . . . . .		1
3C	69-48864-2	. CLAMP, TUBING SUPPORT HALF . . . . .		1
4	65-16738-1	. TUBE ASSY, THERMAL ANTI-ICING FLANGED . . . . .		1
	NAS596-24	. . NUT . . . . .		1
5	65-12248-32	. TUBE ASSY, DEICING 1-1/2 IN. .035 AISI304 (OPTIONALS AISI321, AISI347)		1
	NAS594-24	. . COUPLING . . . . .		1
5	BACN10HX24	. . NUT . . . . .		1
6	69-12787-3	. TUBE ASSY, JT301 ENGINE THERMAL ANTI-ICING LINE . . . . FLANGED		1
7	AN5CH5A	. BOLT . . . . .		2
8	AN960C516L	. WASHER . . . . .		2
9	66-5120-4	. GASKET . . . . .	0150	2
			5299	
9	66-5120-4	. GASKET, (DELETED BY SVA E.O. 80636) . . . . .		2
9	66-5120-1	. GASKET, (ADDED BY SVA E.O. 80636) . . . . .	5151	2
10	1333-542003M3	. VALVE, (V92003) . . . . . (OPTIONAL TO 6690622 (V92003))	5299	1
10	6690622	. VALVE, (V92003) . . . . . (OPTIONAL 1333-542003M3 (V92003))	5299	1
10	10-60741-1	. VALVE ASSY, HIGH PRESSURE BLEED AIR SHUTOFF . . . . .	5151	1
10	10-60741-1	. VALVE ASSY, HIGH PRESSURE BLEED AIR SHUTOFF (DELETED BY SVA E.O. 80636)	5151	1
10	6690622	. VALVE ASSY, HIGH PRESSURE BLEED AIR SHUTOFF (V92003) (ADDED BY SVA E.O. 80636)	5151	1
11	10-60421-1	. VALVE, THERMOSTATIC AIR . . . . .		1
	AN5CH5A	ATTACHING PARTS . BOLT . . . . .		2
12	NAS595-24	. RING . . . . .		1
13	MS21914-12	. CAP, (USED ON 65-12248-18) (ENGINE NO. 1) . . . . .		1
14	65-12248-800	. REDUCER, (ALTERED FROM MS21916-8-6C) (USED ON 65-12248-17) (ENGINES NO. 2 AND 3)		1
14	65-12248-800	. REDUCER, (ALTERED FROM MS21916-8-6C) (USED ON 65-12248-17) (ENGINE NO. 4)		1
15	BACP11K6	. PACKING, (USED ON 65-12248-17) (ENGINES NO. 2 AND 3)		1
15	BACP11K6	. PACKING, (USED ON 65-12248-17) (ENGINE NO. 4) . . . . .		1
16	ER824C120810	. TEE, REDUCER (V88334) (USED ON 65-12248-17) (ENGINES NO. 2 AND 3)		1
16	ER824C120810	. TEE, REDUCER (V88334) (USED ON 65-12248-17) (ENGINE NO. 4)		1
17	MS21902-10C	. UNION, (USED ON 65-12248-17) (ENGINES NO. 2 AND 3) . .		1
17	MS21902-10C	. UNION, (USED ON 65-12248-17) (ENGINE NO. 4) . . . . .		1
	69-12779-1	. BRACKET INSTL, JT301 ENGINE THERMAL ANTI-ICING VALVE		1
17A	69-12780-6	. CLIP, JT301 ENGINE THERMAL ANTI-ICING VALVE BRACKET ATTACHING PARTS		1
	AN3-4	. . BOLT . . . . .		2
18	69-12779-2	. . BRACKET ASSY, JT301 ENGINE THERMAL ANTI-ICING VALVE		1

MISSING ITEM NUMBERS ARE NOT APPLICABLE



**PARTS CATALOG**

FIGURE & ITEM NO.	MANUFACTURER'S PART NUMBER	NOMENCLATURE							EFF FROM TO	UNITS PER ASSY
		1	2	3	4	5	8	7		
2	AN3-4	ATTACHING PARTS								2
		. . . BOLT. . . . .								
18A	69-12780-5	. . . ANGLE ASSY, JT3D1 ENGINE THERMAL ANTI-ICING VALVE BRACKET								1
	NAS508M4	ATTACHING PARTS								
		. . . RIVET . . . . .								2
18B	69-12780-3	. . . ANGLE, JT3D1 ENGINE THERMAL ANTI-ICING VALVE. . . BRACKET								1
	NAS508M4	ATTACHING PARTS								
		. . . RIVET . . . . .								2
18C	69-12780-1	. . . PLATE, JT3D1 ENGINE THERMAL ANTI-ICING VALVE. . . BRACKET								1
19	65-12248-804	. CLIP, (USED ON 65-12248-17) (ENGINES NO. 2 AND 3) . .								1
19	65-12248-804	. CLIP, (USED ON 65-12248-17) (ENGINE NO. 4). . . . .								1
	NAS603-8	ATTACHING PARTS								
	NAS603-8	. SCREW, (ENGINES NO. 2 AND 3). . . . .								1
	NAS679A3W	. SCREW, (ENGINE NO. 4) . . . . .								1
	NAS679A3W	. NUT, (ENGINES NO. 2 AND 3). . . . .								1
	NAS679A3W	. NUT, (ENGINE NO. 4) . . . . .								1
20		FAIRING ASSY, TURBOCOMPRESSOR INLET (ENGINES NO. 2, 3 AND 4) (AIR ONLY) (FOR REF SEE FIG. 12)								

MISSING ITEM NUMBERS ARE NOT APPLICABLE

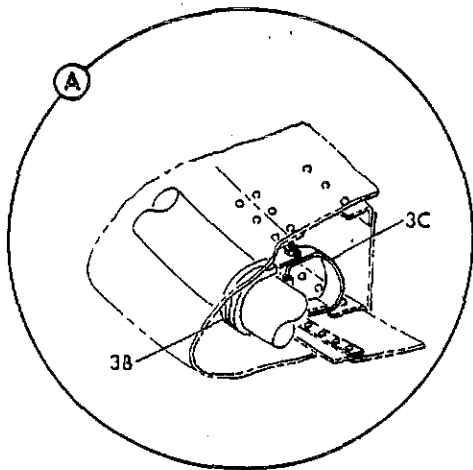
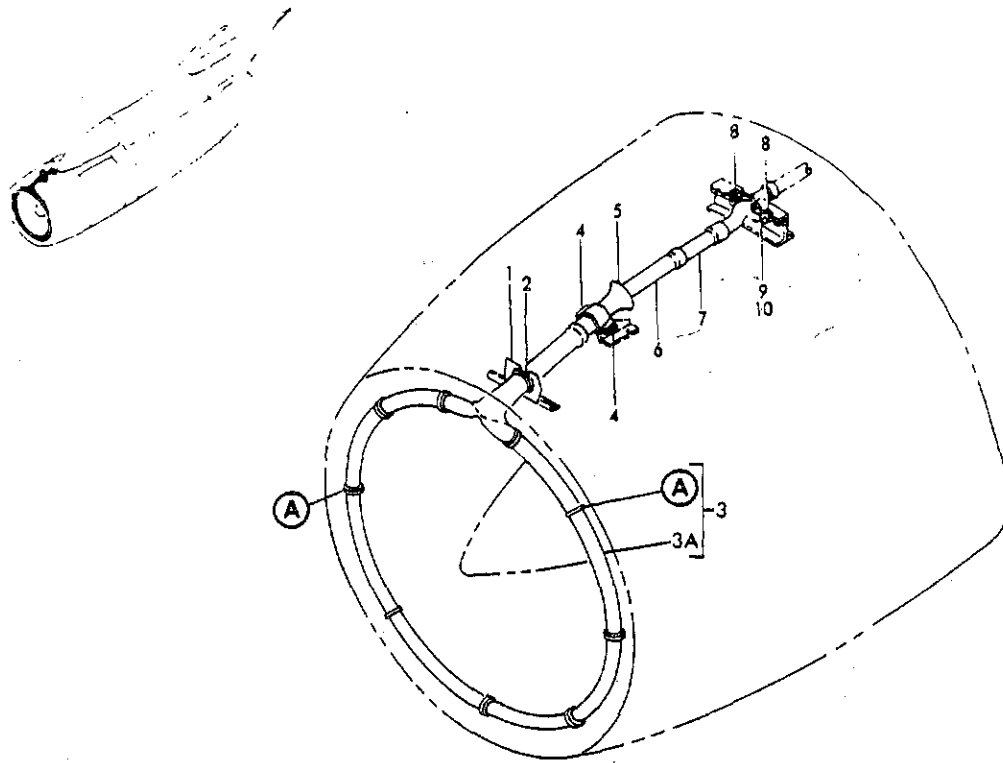


FIGURE 4A. COWL ASSY, LARGE SECONDARY AIR INLET DOORS NOSE (AIR ONLY)



**PARTS CATALOG**

FIGURE & ITEM NO.	MANUFACTURER'S PART NUMBER	NOMENCLATURE							EFF FROM TO	UNITS PER ASSY
		1	2	3	4	5	6	7		
4A	65-41416-1	COWL ASSY, LARGE SECONDARY AIR INLET DOORS NOSE (AIR. ONLY) (SEE 71-1, FIG. 5, ITEM 2, 71-1, FIG. 5B, ITEM 3, 71-1, FIG. 5E, ITEM 3, 71-1, FIG. 5G, ITEM 3 AND 71-1, FIG. 5H, ITEM 2)								RF
1	65-41416-144	. RETAINER, LARGE SECONDARY AIR INLET DOORS NOSE COWL SEAL								1
	MS2047005	ATTACHING PARTS . RIVET . . . . .								9
2	65-41416-143	. SEAL, LARGE SECONDARY AIR INLET DOORS NOSE COWL . . .								1
3	65-11617-61	. DUCT ASSY, ENGINE NACELLE NOSE THERMAL ANTI-ICING . .								1
4	65-41416-161	. CLAMP, LARGE SECONDARY AIR INLET DOORS NOSE COWL . .								2
	MS2047006	ATTACHING PARTS . RIVET . . . . .								4
5	65-41416-152	. TUBE, LARGE SECONDARY AIR INLET DOORS NOSE COWL . . . BELLMOUTH								1
6	65-41416-153	. TUBE, LARGE SECONDARY AIR INLET DOORS NOSE COWL . . . PRIMARY NOZZLE								1
7	65-41416-154	. TUBE, LARGE SECONDARY AIR INLET DOORS NOSE COWL . . .								1
8	65-41416-123	. GASKET . . . . .								2
9	69-11606-10	. NOZZLE ASSY, NOSE COWL INJECTOR . . . . .								1
10	69-11606-11	. TUBE, NOSE COWL NOZZLE INJECTOR . . . . .								1
		. FOR REFERENCE TO OTHER COWL DETAILS, SEE NHA. . . . .								

MISSING ITEM NUMBERS ARE NOT APPLICABLE

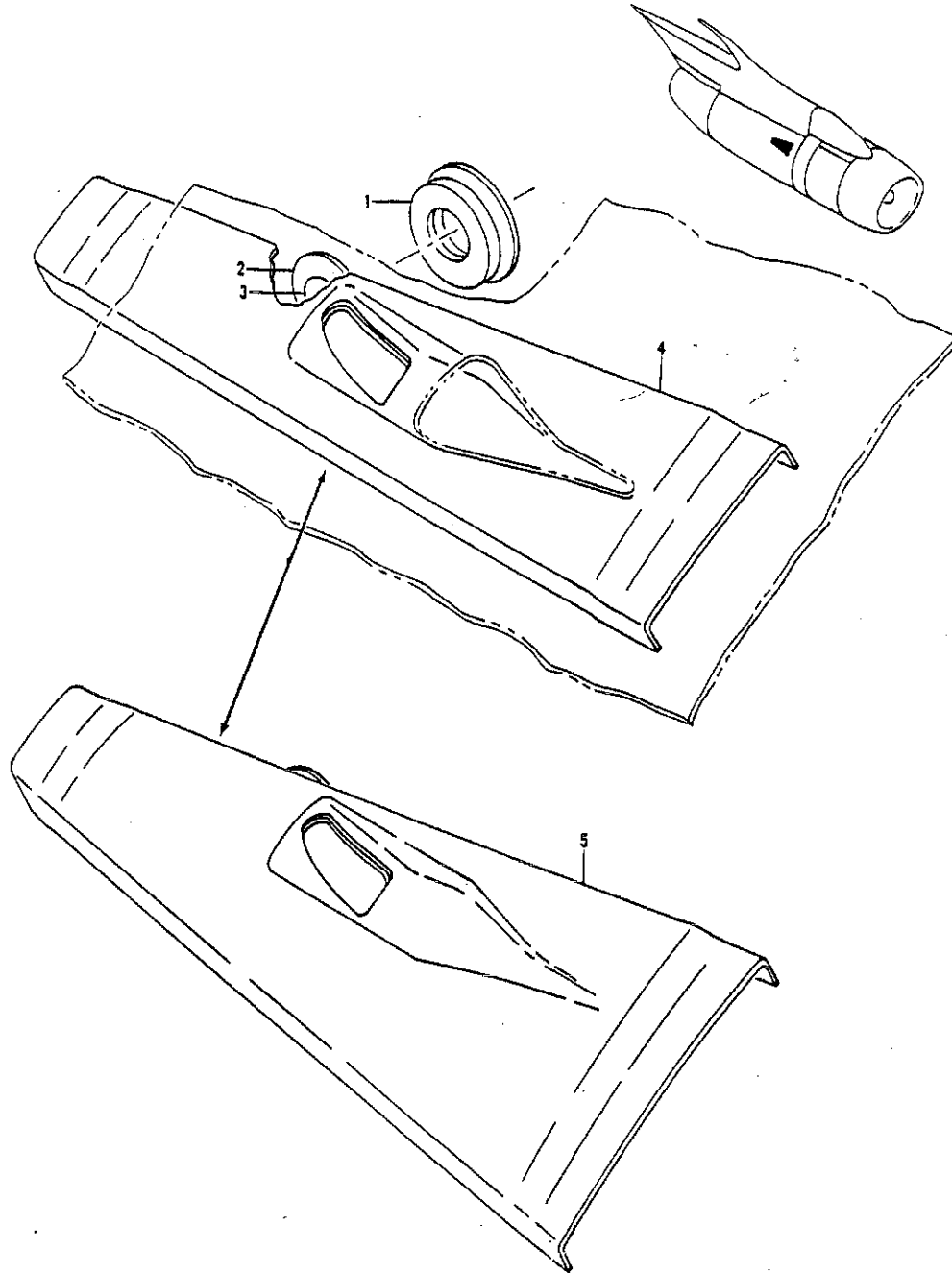


FIGURE 9. SCOOP INSTL, THERMAL ANTI-ICING VALVE NACA FLUSH TYPE (RH)



**PARTS CATALOG**

FIGURE & ITEM NO.	MANUFACTURER'S PART NUMBER	NOMENCLATURE							EFF FROM TO	UNITS PER ASSY
		1	2	3	4	5	6	7		
9	65-23304-4	SCOOP INSTL, THERMAL ANTI-ICING VALVE NACA FLUSH TYPE .								RF
		(RH) (SEE 71-2, FIG. 12, ITEM 90)								
	65-23303-7	. SCOOP ASSY, RIGHT SIDE ENGINE THERMAL ANTI-ICING. . .								1
		VALVE NACA FLUSH TYPE								
		ATTACHING PARTS								
	MS20426D5	. RIVET . . . . .							22	
	MS20426D5	. RIVET . . . . .							6	
2	65-23303-4	. . WASHER, RIGHT SIDE ENGINE THERMAL ANTI-ICING VALVE							1	
		NACA FLUSH TYPE SCOOP								
3	65-23303-2	. . TUBE, RIGHT SIDE ENGINE THERMAL ANTI-ICING VALVE. .							1	
		NACA FLUSH TYPE SCOOP (OPTIONAL 65-23303-802)								
5	65-23303-8	. . SCOOP, RIGHT SIDE ENGINE THERMAL ANTI-ICING VALVE .							1	
		NACA FLUSH TYPE								

MISSING ITEM NUMBERS ARE NOT APPLICABLE

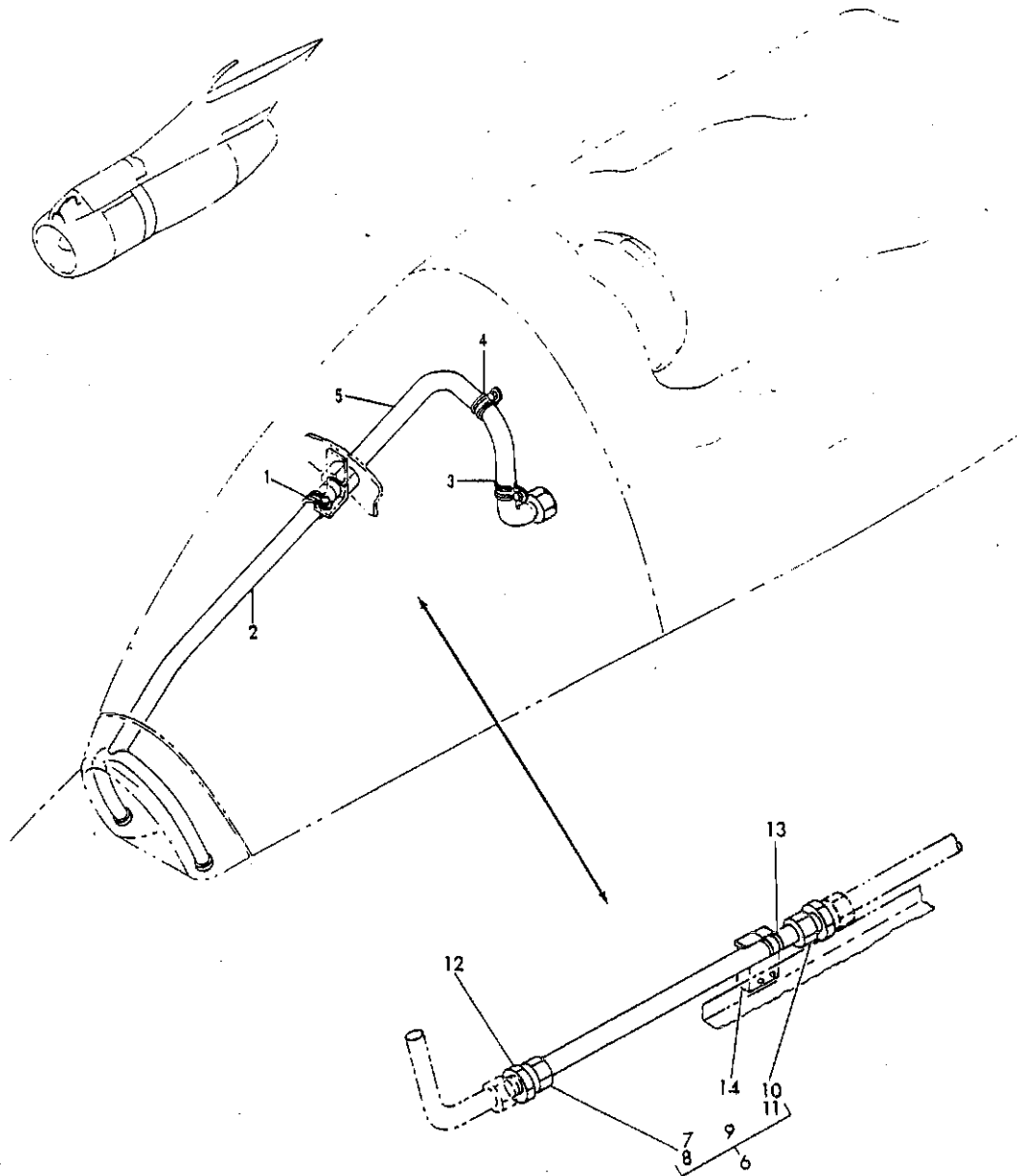


FIGURE 12. FAIRING ASSY, TURBOCOMPRESSOR INLET (AIR ONLY)



**PARTS CATALOG**

FIGURE & ITEM NO.	MANUFACTURER'S PART NUMBER	NOMENCLATURE							EFF FROM TO	UNITS PER ASSY
		1	2	3	4	5	6	7		
12	65-10607-38	FAIRING ASSY, TURBOCOMPRESSOR INLET (ENGINES NO. 2, 3 AND 4) (AIR ONLY) (SEE 71-2, FIG. 2, ITEM 2)								RF
	1 BACC10CE10	. CLAMP, (USED ON 65-10607-38) . . . . .								1
	NAS1103-3W	ATTACHING PARTS								
	AN960-10L	. BOLT, (USED ON 65-10607-38) . . . . .								1
	NAS679A3W	. WASHER, (USED ON 65-10607-38) . . . . .								1
		. NUT . . . . .								1
	2 65-10607-39	. TUBE ASSY, TURBOCOMPRESSOR INLET FAIRING (USED ON . . . . . 65-10607-38)								1
	3 BACC10CE10	. CLAMP, (USED ON 65-10607-38) . . . . .								1
	4 BACC10DDC10A	. CLAMP, (USED ON 65-10607-38) . . . . .								1
		ATTACHING PARTS								
	NAS1103-3W	. BOLT, (USED ON 65-10607-38) . . . . .								2
	AN960-10L	. WASHER, (USED ON 65-10607-38) . . . . .								2
	NAS679A3W	. NUT, (USED ON 65-10607-38) . . . . .								2
	5 65-10607-40	. TUBE ASSY, TURBOCOMPRESSOR INLET FAIRING (USED ON . . . . . 65-10607-38)								1
	65-10607-43	. SLEEVE, TURBOCOMPRESSOR INLET FAIRING . . . . .								1
	MS21922R10	. SLEEVE . . . . .								1
	MS21921-10C	. NUT . . . . .								1
		. FOR REFERENCE TO OTHER FAIRING DETAILS, SEE NHA . . . . .								

MISSING ITEM NUMBERS ARE NOT APPLICABLE

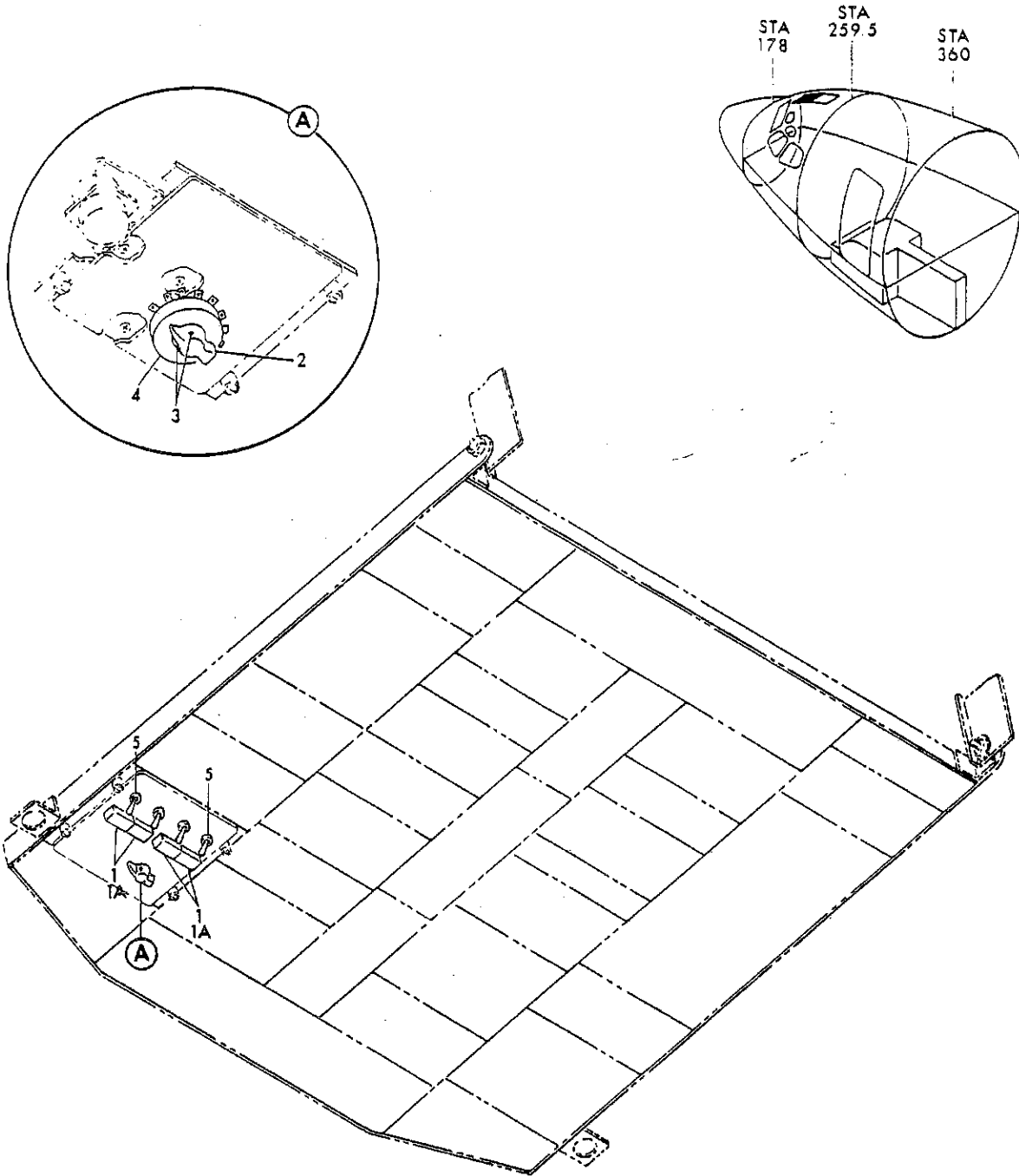


FIGURE 26. MODULE INSTL. P13 PILOTS OVERHEAD (AIR ONLY)

# BOEING

## 707

### PARTS CATALOG (MAINTENANCE)

FIGURE & ITEM NO.	MANUFACTURER'S PART NUMBER	NOMENCLATURE							EFF FROM TO	UNITS PER ASSY	
		1	2	3	4	5	6	7			
R R R R R R R	26	65-86177-2	MODULE INSTL, P13 PILOTS OVERHEAD (VARIABLE . . . . . DWG:65-86177-5011) (AIR ONLY) (SEE 25-1, FIG. 2E, ITEM 92 AND 25-1, FIG. 180H, ITEM 108)							5199	RF
		65-58786-1	MODULE INSTL, P13 PILOTS OVERHEAD (AIR ONLY) (DELETED . . . . . BY MOD 7211.019-225) (SEE 25-1, FIG. 1K ITEM 6)							0150	RF
		391-31-10-74168-001	MODULE INSTL, P13 PILOTS OVERHEAD (AIR ONLY) (VS2500) . . . . . (65-58786-1 MODIFIED BY 7211.019-225) (SEE 25-1, FIG. 1K, ITEM 6)							0103	RF
		391-31-10-74168-003	MODULE INSTL, P13 PILOTS OVERHEAD (AIR ONLY) (VS2500) . . . . . (65-58786-1 MODIFIED BY 7211.019-225) (SEE 25-1, FIG. 1K, ITEM 6)							0450	RF
		69-46112-4	. MODULE ASSY, P13F NACELLE ANTI-ICE (AIR ONLY) . . . . .							0150	RF
		69-46112-8	. MODULE ASSY, P13F NACELLE ANTI-ICE (AIR ONLY) . . . . .							5199	RF
	1	319-629-1004-003	. . LIGHT ASSY, (V81590) . . . . .							0150	4
	1	318-630-1003-003	. . LIGHT ASSY, (V81590) . . . . .							5199	4
	1A	319-25	. . BRACKET, MOUNTING (V81590) . . . . .							0150	4
	2	66-9039	. . KNOB ASSY, SMALL POINTER . . . . .								1
	3	LL22XD62J3	. . SETSCREW, HEX SOCKET (V03038) . . . . .								2
	4	MS25002-4	. . SWITCH . . . . .								1
	5	MS24523-23	. . SWITCH . . . . .								4
			. FOR REFERENCE TO OTHER MODULE DETAILS, SEE NHA. . . . .								

MISSING ITEM NUMBERS ARE NOT APPLICABLE

RAF  
NOV 21/01

# 75-01-26

DETAILED PARTS LIST  
75-01-26  
PAGE 1