

# **BOEING** 707 **PARTS CATALOG (MAINTENANCE)**

CHAPTER 77  
 ENGINE INDICATING  
 TABLE OF CONTENTS

SECTION	FIGURE
77-01 ENGINE INDICATING SYSTEMS	
EQUIPMENT INSTL, ELECTRONIC RACK . . . . .	22A
EQUIPMENT INSTL, LH RADIO RACK . . . . .	22B
EQUIPMENT INSTL, RACK LOWER SECTION 41 . . . . .	22A
FITTING INSTL, NACELLE STRUT LOWER SPAR PLUMBING . . . . .	14E
GENERATOR INSTL, N1 AND N2 TACHOMETER . . . . .	16
MODULE INSTL, CAPTAINS AND FIRST OFFICERS . . . . .	66
MOUNTING INSTL, THERMOCOUPLE RESISTOR . . . . .	55
PANEL INSTL, FLIGHT ENGINEERS LOWER . . . . .	31M
PANEL INSTL, FLIGHT ENGINEERS LOWER . . . . .	31P
PANEL INSTL, P9 ENGINE INSTRUMENT . . . . .	46F
PICKUP INSTL, ENGINE VIBRATION . . . . .	19
PLUMBING INSTL, FAN ENGINE . . . . .	9
PLUMBING INSTL, INBOARD NACELLE STRUT PT2 PRESSURE RATIO . . . . .	14B
PLUMBING INSTL, NACELLE STRUT PT7 PRESSURE RATIO . . . . .	14E
PLUMBING INSTL, OUTBOARD NACELLE STRUT PT2 PRESSURE RATIO . . . . .	14B
PROBE INSTL, NACELLE STRUT PRESSURE RATIO . . . . .	7
RESISTOR INSTL, THERMOCOUPLE . . . . .	55
TRANSMITTER INSTL, FAN ENGINE STRUT PRESSURE RATIO . . . . .	7

**BOEING** *707* *Intercontinental*   
**PARTS CATALOG**

**SECTION 01**  
**ENGINE INDICATING SYSTEMS**

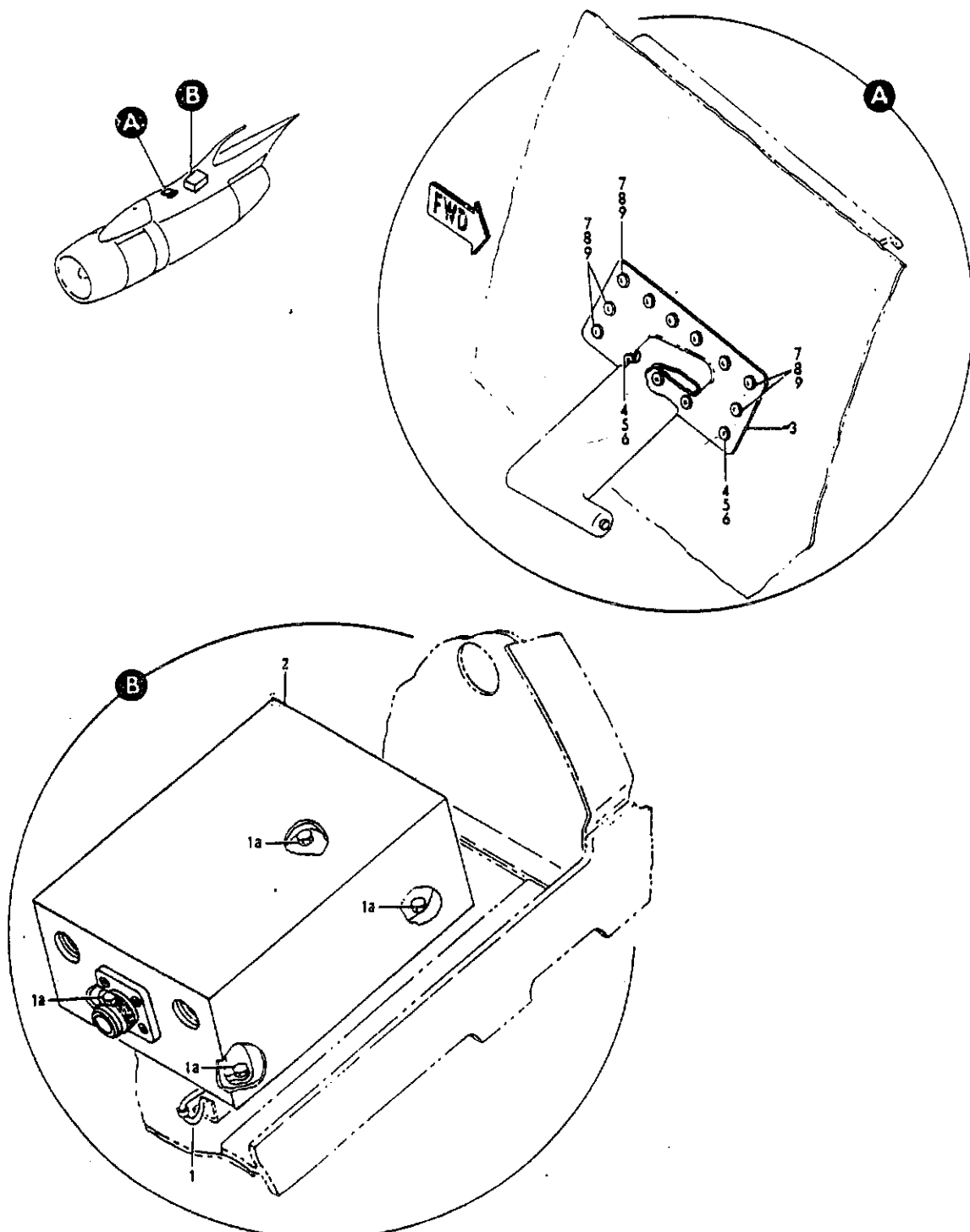


FIGURE 7. PROBE INSTL, NACELLE STRUT PRESSURE RATIO  
 TRANSMITTER INSTL, FAN ENGINE STRUT PRESSURE RATIO



PARTS CATALOG

FIGURE & ITEM NO.	MANUFACTURER'S PART NUMBER	NOMENCLATURE							EFF FROM TO	UNITS PER ASSY
		1	2	3	4	5	6	7		
7		TRANSMITTER INSTL, FAN ENGINE STRUT PRESSURE RATIO . . .								
	65-15667-10	PROBE INSTL, NACELLE STRUT PRESSURE RATIO . . . . .								RF
	65-15667-11	. TRANSMITTER INSTL, FAN ENGINE OUTBOARD STRUT PRESSURE RATIO (SEE 54-1, FIG. 6A, ITEM 14, 54-1, FIG. 6B, ITEM 11 AND 54-1, FIG. 6C, ITEM 15)								RF
1	MS25083-2BB7	. TRANSMITTER INSTL, FAN ENGINE INBOARD STRUT PRESSURE RATIO (SEE 54-1, FIG. 21A, ITEM 12, 54-1, FIG. 21B, ITEM 11 AND 54-1, FIG. 21C, ITEM 22)								1
1	MS25083-2BB6	. JUMPER ASSY, (OUTBOARD) . . . . .								1
	NAS603-8	. JUMPER ASSY, (INBOARD) . . . . .								1
	AN960D10L	ATTACHING PARTS								2
		. SCREW . . . . .								1
		. WASHER . . . . .								2
		-----*								
1A	NAS1103-2W	. BOLT . . . . .								4
2	10-3243-15	. TRANSMITTER, ENGINE INDICATING SYSTEM PRESSURE . . . RATIO								1
	65-27482-2	. PROBE INSTL, OUTBOARD NACELLE STRUT PRESSURE RATIO . . (SEE 54-1, FIG. 6A, ITEM 15, 54-1, FIG. 6B, ITEM 12, 54-1, FIG. 6C, ITEM 16 AND 54-1, FIG. 6D, ITEM 13)								RF
	65-27482-1	. PROBE INSTL, INBOARD NACELLE STRUT PRESSURE RATIO . . (SEE 54-1, FIG. 21A, ITEM 13, 54-1, FIG. 21B, ITEM 12, 54-1, FIG. 21C, ITEM 23 AND FIG. 54-1, FIG. 21D, ITEM 11)								RF
3	69-13299-6	. PROBE ASSY, ENGINE INLET PRESSURE . . . . .								1
		ATTACHING PARTS								
4	BACB30P6-4	. BOLT . . . . .								4
6	NAS1080C6	. COLLAR . . . . .								4
7	MS20426D6	. RIVET . . . . .								9
		-----*								

MISSING ITEM NUMBERS ARE NOT APPLICABLE

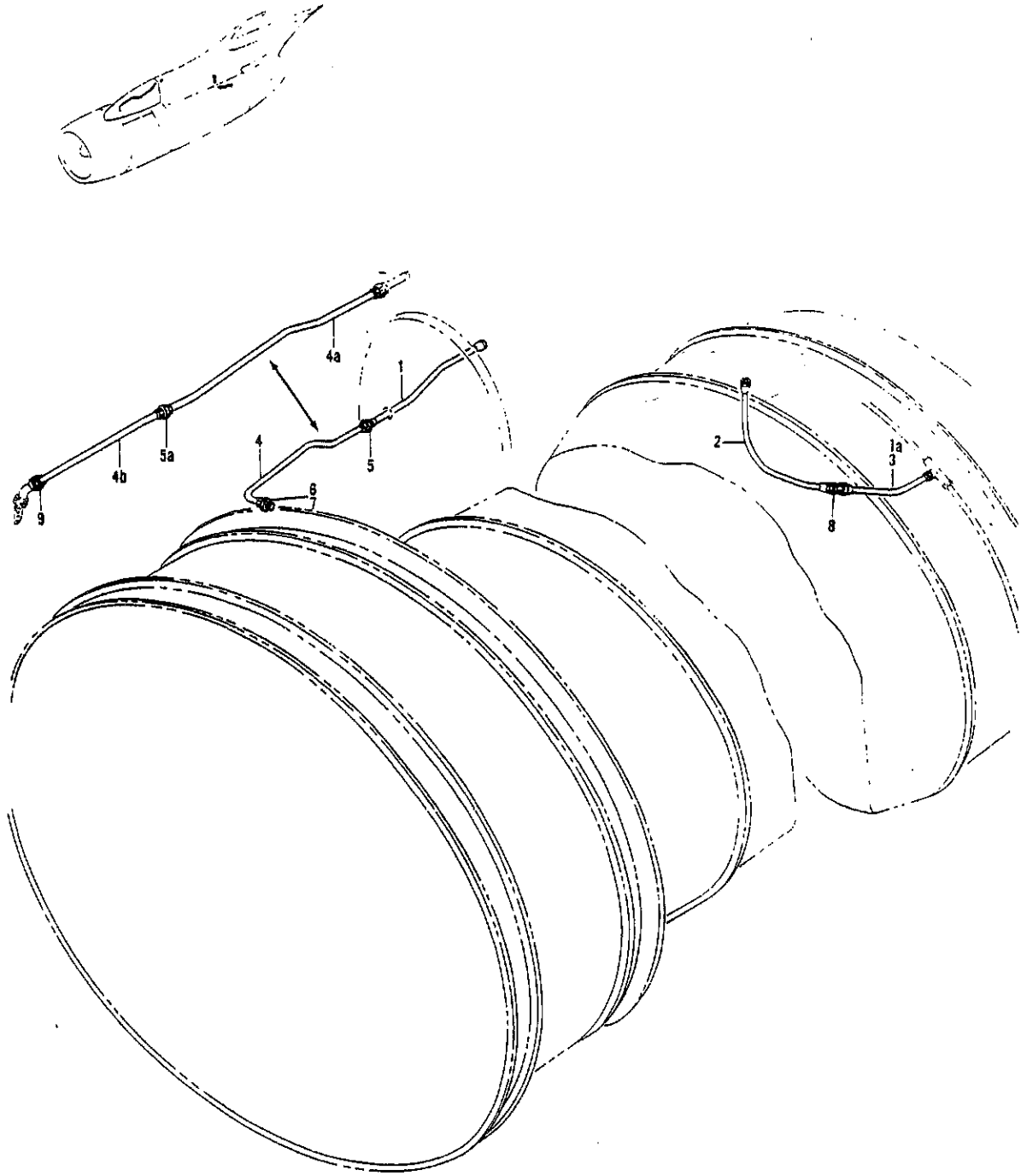


FIGURE 9. PLUMBING INSTL, FAN ENGINE (ENGINE INDICATING ONLY)



**PARTS CATALOG**

FIGURE & ITEM NO.	MANUFACTURER'S PART NUMBER	1 2 3 4 5 6 7	NOMENCLATURE	EFF FROM TO	UNITS PER ASSY
9	65-58597-1		PLUMBING INSTL, FAN ENGINE. . . . .		RF
			PLUMBING INSTL, PRESSURE RATIO PROBE (SEE 71-1, FIG. . . . .		
			5B, ITEM 36, 71-1, FIG. 5G, ITEM 41 AND 71-1, FIG. . . . .		
			5H, ITEM 36)		
1	10-60110-19		. HOSE ASSY, ENGINE PT2 PROBE ANTI-ICING. . . . .		1
	65-58597-3		. PLUMBING INSTL, PRESSURE RATIO PT7 LINE . . . . .		1
1A	65-58597-4		. TUBE ASSY . . . . .		1
2	10-60110-14		. HOSE ASSY, ENGINE PT7 TO PRESSURE RATIO TRANSMITTANCE		1
4	65-11687-206		. TUBE ASSY, PITOT PRESSURE 1/4 .028 AISI304. . . . .		1
			(OPTIONALS AISI321, AISI347)		
	MS21921-4		. . NUT . . . . .		2
	MS21922-4		. . SLEEVE. . . . .		2
			(OPTIONAL BACS13AP4)		
	BACS13AP4		. . SLEEVE. . . . .		2
			(OPTIONAL TO MS21922-4)		
5	MS21902-4		. UNION . . . . .		1
6	MS21916-6-4		. REDUCER . . . . .		1
7	AN901-6C		. GASKET. . . . .		1
8	MS21900-4C		. ADAPTER . . . . .		1

MISSING ITEM NUMBERS ARE NOT APPLICABLE

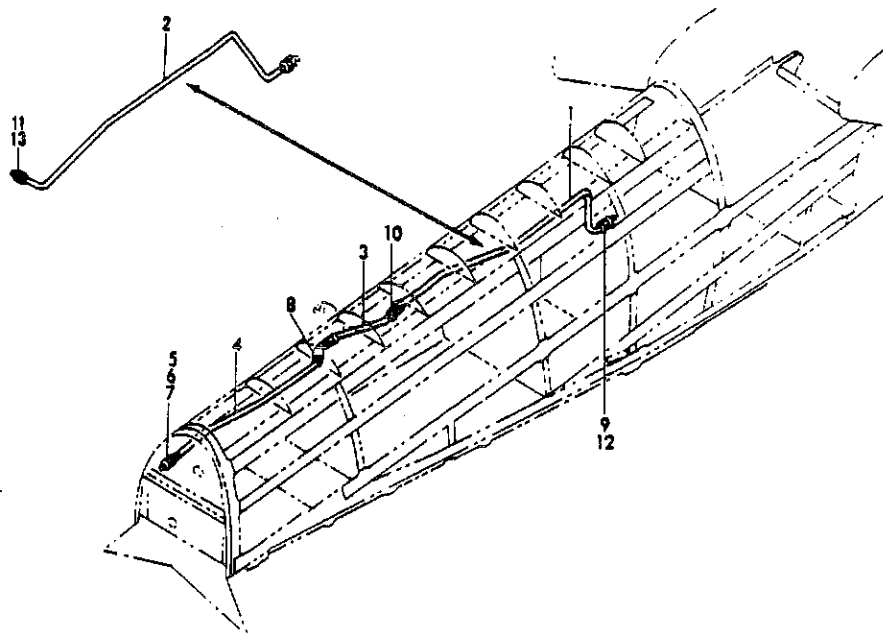
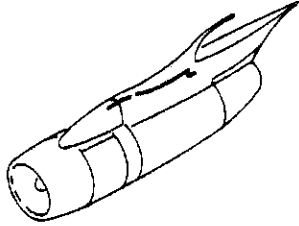


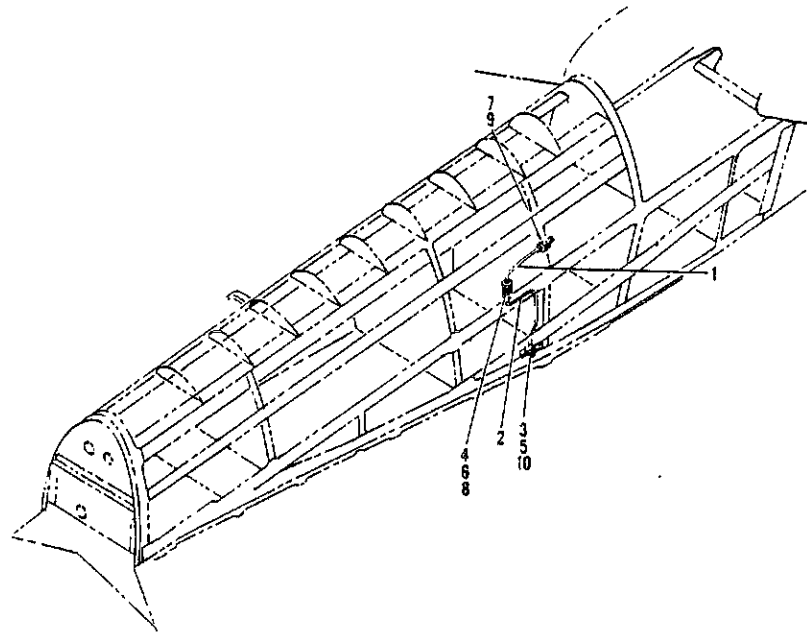
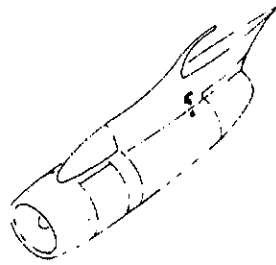
FIGURE 148. PLUMBING INSTL, NACELLE STRUT PT2 PRESSURE RATIO



**PARTS CATALOG**

FIGURE & ITEM NO.	MANUFACTURER'S PART NUMBER	NOMENCLATURE							EFF FROM TO	UNITS PER ASSY
		1	2	3	4	5	6	7		
14B	65-11904-449	PLUMBING INSTL, OUTBOARD NACELLE STRUT PT2 PRESSURE . . . RATIO (SEE 54-1, FIG. 6A, ITEM 7, 54-1, FIG. 6B, ITEM 6 AND 54-1, FIG. 6C, ITEM 6)								RF
	65-11904-448	PLUMBING INSTL, INBOARD NACELLE STRUT PT2 PRESSURE . . . RATIO (SEE 54-1, FIG. 21A, ITEM 26, 54-1, FIG. 21B, ITEM 25 AND 54-1, FIG. 21C, ITEM 7)								RF
1	65-11904-435	. TUBE ASSY, ENGINE INLET PRESSURE 3/8 IN. .035 6061-T6 (OPTIONAL WW-T-789) (NACELLES NO. 1 AND 4)								1
2	65-11904-437	. TUBE ASSY, ENGINE INLET PRESSURE 3/8 IN. .035 6061-T6 (OPTIONAL WW-T-789) (NACELLES NO. 2 AND 3)								1
	MS21922-6	. . SLEEVE. . . . . (OPTIONAL TO BACS13AP6)								2
	BACS13AP6	. . SLEEVE. . . . . (OPTIONAL MS21922-6)								2
	MS21921D6	. . NUT . . . . .								2
3	65-11904-445	. TUBE ASSY, ENGINE INLET PRESSURE 1/4 IN. .028 6061-T6 (OPTIONAL WW-T-789) (NACELLES NO. 1 AND 4)								1
4	65-11904-436	. TUBE ASSY, ENGINE INLET PRESSURE 1/4 IN. .028 AISI304 (OPTIONALS AISI321, AISI347) (NACELLES NO. 1 AND 4)								1
4	65-11904-438	. TUBE ASSY, ENGINE INLET PRESSURE 1/4 IN. .028 AISI304 (OPTIONALS AISI321, AISI347) (NACELLES NO. 2 AND 3)								1
	MS21922-4	. . SLEEVE. . . . . (OPTIONAL TO BACS13AP4)								2
	BACS13AP4	. . SLEEVE. . . . . (OPTIONAL MS21922-4)								2
	MS21921D4	. . NUT, (USED ON 65-11904-445) . . . . .								2
	MS21921-4	. . NUT, (USED ON 65-11904-436 AND -438) . . . . .								2
5	AN924-4	. . NUT . . . . .								1
6	AN960-716	. . WASHER. . . . .								1
7	MS21924-4	. . UNION . . . . .								1
8	MS21904-4	. . ELBOW . . . . .								1
9	MS21916D6-4	. . REDUCER . . . . .								1
10	MS21916D6-4	. . REDUCER, (NACELLES NO. 1 AND 4) . . . . .								1
11	ER894D0406	. . REDUCER, (V50948 (OPTIONAL V79470)) (NACELLES NO. 2 AND 3)								1
12	MS29512-04	. . PACKING . . . . .								1
13	MS29512-04	. . PACKING, (NACELLES NO. 2 AND 3) . . . . .								1

MISSING ITEM NUMBERS ARE NOT APPLICABLE



PLUMBING INSTL, NACELLE STRUT PT7 PRESSURE RATIO  
 FIGURE 14E. FITTING INSTL, NACELLE STRUT LOWER SPAR PLUMBING (ENGINE INDICATING ONLY)

DETAILED PARTS LIST  
 77-01-14E  
 PAGE 0

77-01-14E

NOV 21/90



PARTS CATALOG

FIGURE & ITEM NO.	MANUFACTURER'S PART NUMBER	NOMENCLATURE							EFF FROM TO	UNITS PER ASSY
		1	2	3	4	5	6	7		
14E		PLUMBING INSTL, NACELLE STRUT PT7 PRESSURE RATIO. . . . .								
		FITTING INSTL, NACELLE STRUT LOWER SPAR PLUMBING. . . . . (ENGINE INDICATING ONLY)								
		65-11904-411 . PLUMBING INSTL, OUTBOARD NACELLE STRUT PT7 PRESSURE . . . . . RATIO (SEE 54-1, FIG. 6A, ITEM 7, 54-1, FIG. 6B, ITEM 6 AND 54-1, FIG. 6C, ITEM 7)								RF
		65-11904-410 . PLUMBING INSTL, INBOARD NACELLE STRUT PT7 PRESSURE. . . . . RATIO (SEE 54-1, FIG. 21A, ITEM 27, 54-1, FIG. 21B, ITEM 26 AND 54-1, FIG. 21C, ITEM 8)								RF
	1	65-11904-236 . . TUBE ASSY, TURBINE DISCHARGE PRESSURE 1/4 .028. . . . . 6061-T6 (OUTBOARD)								1
	1	65-11904-233 . . TUBE ASSY, TURBINE DISCHARGE PRESSURE 1/4 .028. . . . . 6061-T6 (INBOARD)								1
	2	65-11904-453 . . TUBE ASSY, TURBINE DISCHARGE PRESSURE 1/4 .028. . . . . 6061-T6 (OUTBOARD)								1
	2	65-11904-452 . . TUBE ASSY, TURBINE DISCHARGE PRESSURE 1/4 .028. . . . . 6061-T6 (INBOARD)								1
		MS21921D4 . . . . . NUT . . . . .								2
		BACS13AP4 . . . . . SLEEVE, (OPTIONAL MS21922-4). . . . .								2
	3	AN924-4 . . . . . NUT . . . . .								1
	4	AN924-4D . . . . . NUT . . . . .								1
	5	AN960-716 . . . . . WASHER. . . . .								1
	6	AN960-716 . . . . . WASHER. . . . .								1
	7	MS21902D4 . . . . . UNION . . . . .								1
	8	MS21924D4 . . . . . UNION . . . . .								1
	9	MS29512-04 . . . . . PACKING . . . . .								1
		65-31487-10 . FITTING INSTL, NACELLE STRUT LOWER SPAR PLUMBING. . . . . (OUTBOARD) (ENGINE INDICATING ONLY) (SEE 54-1, FIG. 6A, ITEM 4, 54-1, FIG. 6B, ITEM 3 AND 54-1, FIG. 6C, ITEM 3)							0150	RF
		65-31487-12 . FITTING INSTL, NACELLE STRUT LOWER SPAR PLUMBING. . . . . (OUTBOARD) (ENGINE INDICATING ONLY) (SEE 54-1, FIG. 6A, ITEM 4, 54-1, FIG. 6B, ITEM 3 AND 54-1, FIG. 6C, ITEM 3)							5199	RF
		65-31487-9 . FITTING INSTL, NACELLE STRUT LOWER SPAR PLUMBING. . . . . (INBOARD) (ENGINE INDICATING ONLY) (SEE 54-1, FIG. 21A, ITEM 3, 54-1, FIG. 21B, ITEM 3 AND 54-1, FIG. 21C, ITEM 3)							0150	RF
	65-31487-11 . FITTING INSTL, NACELLE STRUT LOWER SPAR PLUMBING. . . . . (INBOARD) (ENGINE INDICATING ONLY) (SEE 54-1, FIG. 21A, ITEM 3, 54-1, FIG. 21B, ITEM 3 AND 54-1, FIG. 21C, ITEM 3)							5199	RF	
10	69-24405-9 . . . . . FITTING ASSY, NACELLE STRUT LOWER SPAR (OUTBOARD)								1	
10	69-24405-8 . . . . . FITTING ASSY, NACELLE STRUT LOWER SPAR (INBOARD). . . . . ATTACHING PARTS								1	
	NAS508M5 . . . . . RIVET . . . . .								2	
	* . . . . .									
	. . FOR REFERENCE TO OTHER FITTING DETAILS, SEE NHA . .									

R  
R  
R  
R  
R  
R  
R  
R  
R  
R  
R

MISSING ITEM NUMBERS ARE NOT APPLICABLE

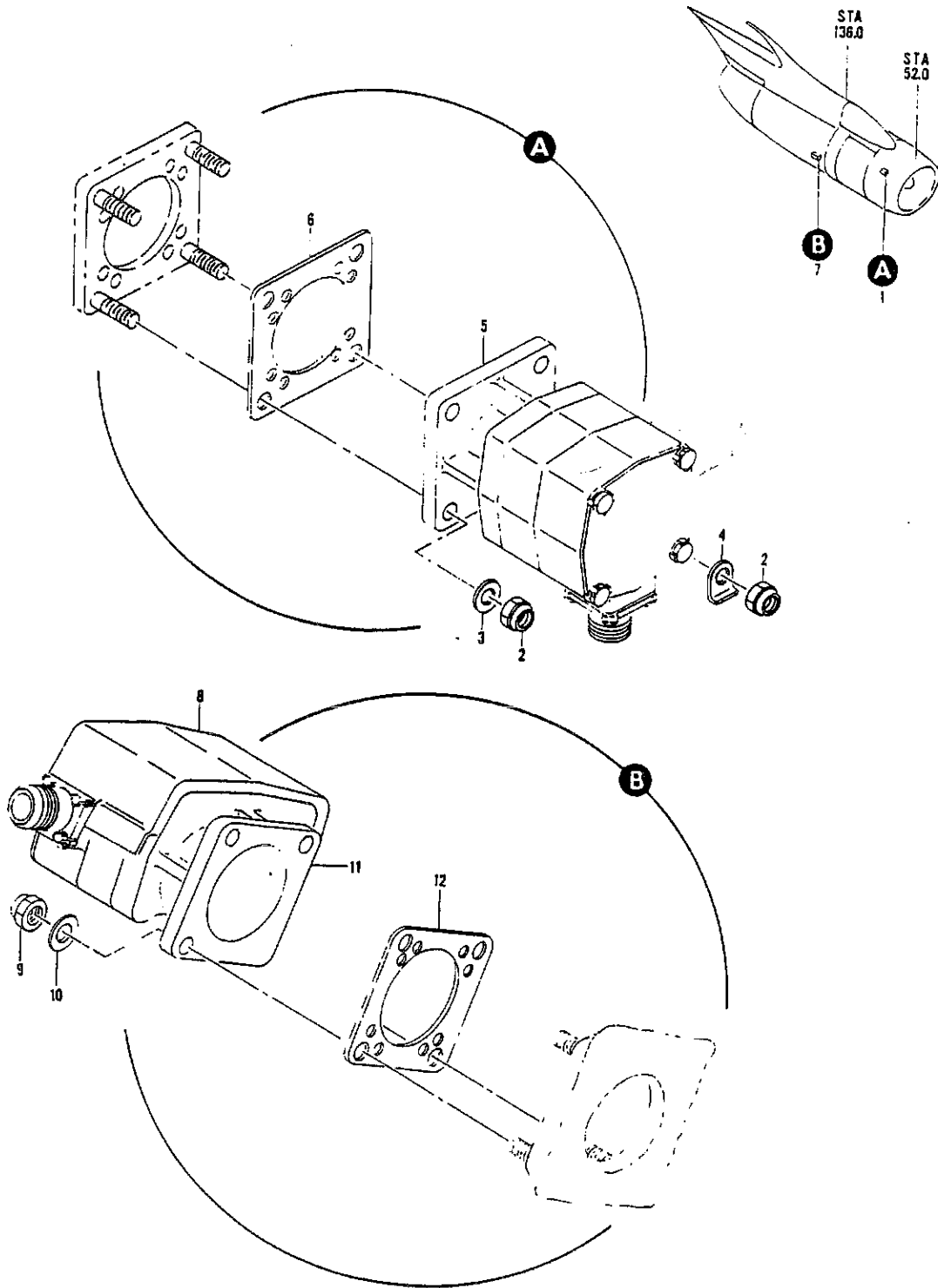


FIGURE 16. GENERATOR INSTL. N1 AND N2 TACHOMETER

DETAILED PARTS LIST  
77-01-16  
PAGE 0

77-01-16

NOV 21/90



**PARTS CATALOG**

FIGURE & ITEM NO.	MANUFACTURER'S PART NUMBER	1 2 3 4 5 6 7	NOMENCLATURE	RF	
				FROM TO	UNITS PER ASSY
16			GENERATOR INSTL, N1 AND N2 TACHOMETER . . . . .		
1	69-10456-6		. GENERATOR INSTL, N1 TACHOMETER (SEE 71-1, FIG. 5, . . . ITEM 11, 71-1, FIG. 5B, ITEM 56, 71-1, FIG. 5E, ITEM 70, 71-1, FIG. 5G, ITEM 65 AND 71-1, FIG. 5H, ITEM 56)		RF
2	NAS679A4W		. . . NUT . . . . .		4
3	AN960-416		. . . WASHER . . . . .		3
4	66-10655-6		. . . CLIP, ENGINE ELECTRIC WIRING SUPPORT. . . . .		1
5	2CM9ABY7		. . . GENERATOR, TACHOMETER (V97424). . . . . (OPTIONAL 2CM9ABH7 (V97424))		1
5	2CM9ABH7		. . . GENERATOR, TACHOMETER (V97424). . . . . (OPTIONAL 2CM9ABY7 (V97424))		1
6	AN4045-1		. . . GASKET. . . . .		1
7	69-10456-7		. GENERATOR INSTL, N2 TACHOMETER (SEE 71-1, FIG. 5, . . . ITEM 12, 71-1, FIG. 5B, ITEM 57, 71-1, FIG. 5E, ITEM 71, 71-1, FIG. 5G, ITEM 66 AND 71-1, FIG. 5H, ITEM 57)		RF
9	NAS679A4W		. . . NUT . . . . .		4
10	AN960-416		. . . WASHER. . . . .		4
11	2CM9ABY7		. . . GENERATOR, TACHOMETER (V97424). . . . .		1
12	AN4045-1		. . . GASKET. . . . .		1

MISSING ITEM NUMBERS ARE NOT APPLICABLE

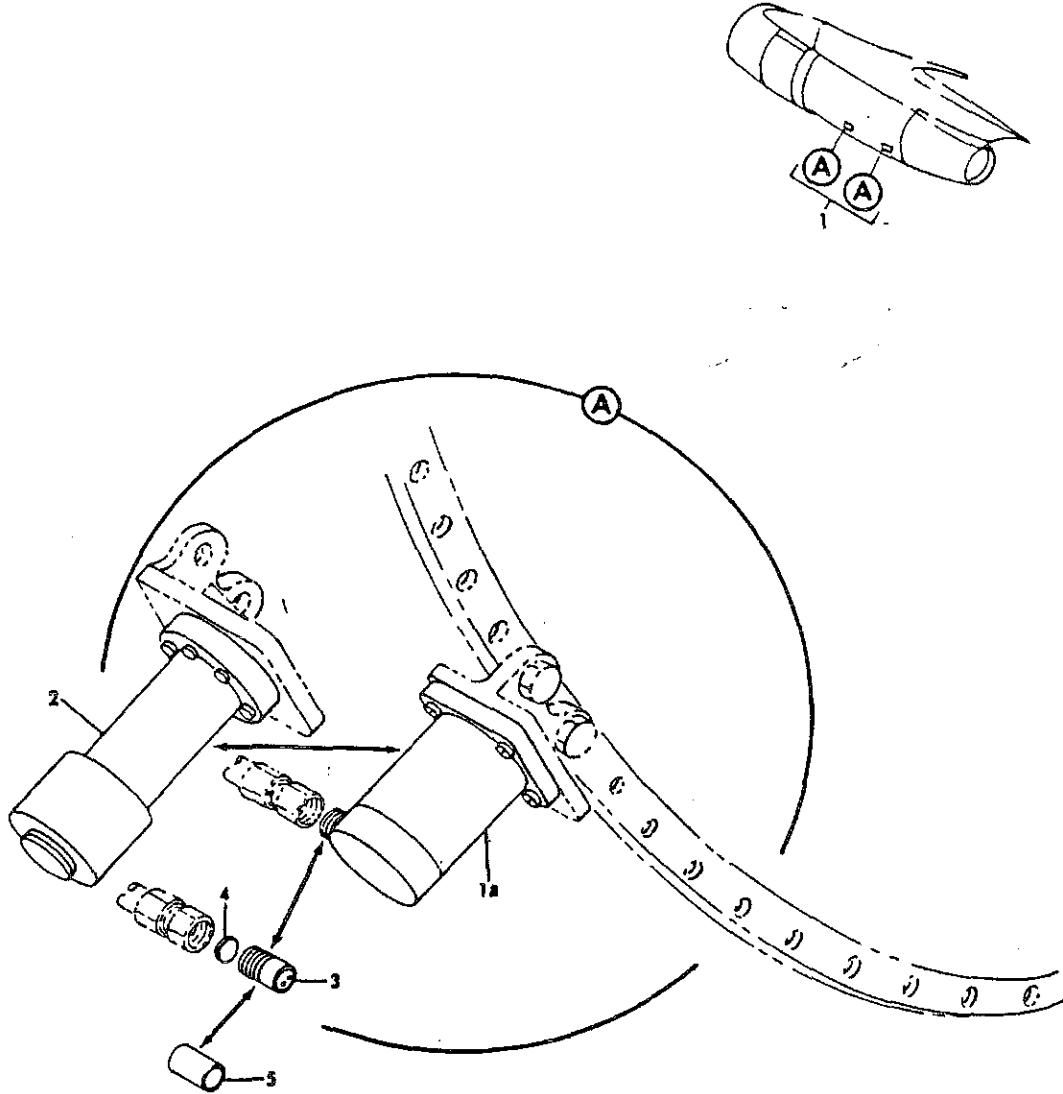


FIGURE 19. PICKUP INSTL, ENGINE VIBRATION



**PARTS CATALOG**

FIGURE & ITEM NO.	MANUFACTURER'S PART NUMBER	NOMENCLATURE 1 2 3 4 5 6 7	EFF	UNITS
			FROM TO	PER ASSY
R R R	19 1	69-11178-6	5199	RF
	1	69-11178-3		RF
R	.1A	4-125-0001	5199	2
	Z	1777291-24		2
R R	BACS12AE8C	ATTACHING PARTS	0150	8
	BACS12AF8C	. SCREW . . . . .	5199	12
-----*				

MISSING ITEM NUMBERS ARE NOT APPLICABLE

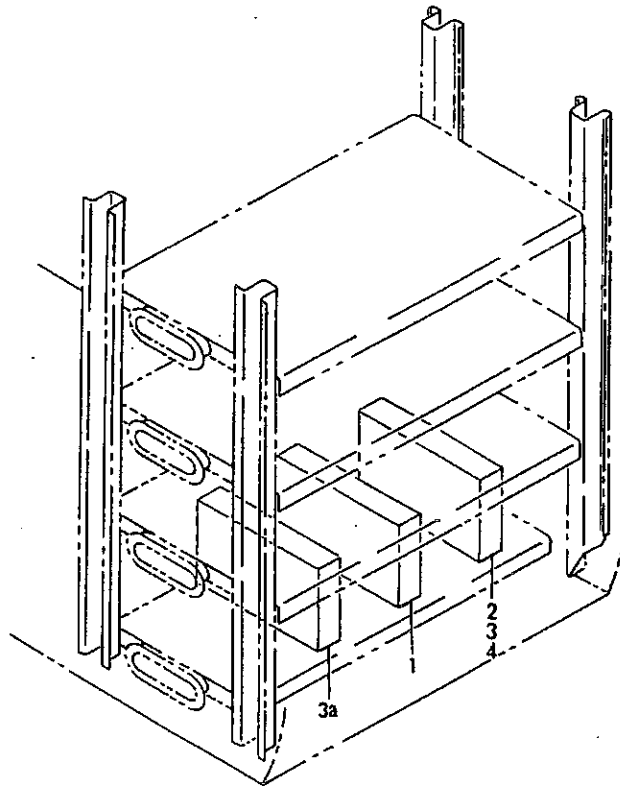
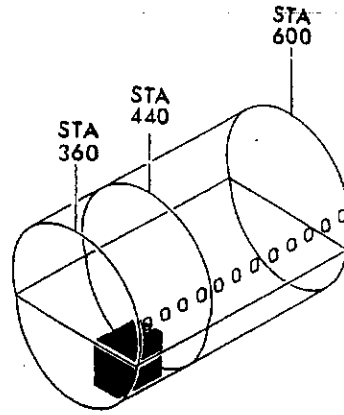


FIGURE 22A. EQUIPMENT INSTL, ELECTRONIC RACK (ENGINE INDICATING ONLY)

# BOEING

707  
PARTS CATALOG (MAINTENANCE)

FIGURE & ITEM NO.	MANUFACTURER'S PART NUMBER	1 2 3 4 5 6 7	NOMENCLATURE	EFF	UNITS
				FROM TO	PER ASSY
R R R R R R R R R	22A	65-1343-87	EQUIPMENT INSTL, ELECTRONIC RACK (ENGINE INDICATING . . . ONLY) (DELETED BY RAF MOD 7211.019-4) (SEE 24-3, FIG. 6D, ITEM 11)	0150	RF
	351-25-50-74125-001	EQUIPMENT INSTL, RACK LOWER SECTION 41 (ENGINE. . . . . INDICATING ONLY) (VZ0031) (ADDED BY RAF MOD 7211.019-4) (SEE 24-3, FIG. 6D, ITEM 11)	0450	RF	
	351-25-50-74125-003	EQUIPMENT INSTL, RACK LOWER SECTION 41 (ENGINE. . . . . INDICATING ONLY) (VZ031) (ADDED BY RAF MOD 7211.019-4) (SEE 24-3, FIG. 6D, ITEM 11)	0101	RF	
	351-25-50-74125-005	EQUIPMENT INSTL, RACK LOWER SECTION 41 (ENGINE. . . . . INDICATING ONLY) (VZ0031) (ADDED BY RAF MOD 7211.019-4) (SEE 24-3, FIG. 6D, ITEM 11)	0203	RF	
	1783875-2	. AMPLIFIER, ENGINE VIBRATION (V58960) (DELETED BY. . . RAF MOD 7211.019-4) . FOR REFERENCE TO OTHER EQUIPMENT DETAILS, SEE NHA . . .	0150 0150	1	
MISSING ITEM NUMBERS ARE NOT APPLICABLE					

RAF  
NOV 21/01

# 77-01-22A

DETAILED PARTS LIST  
77-01-22A  
PAGE 1

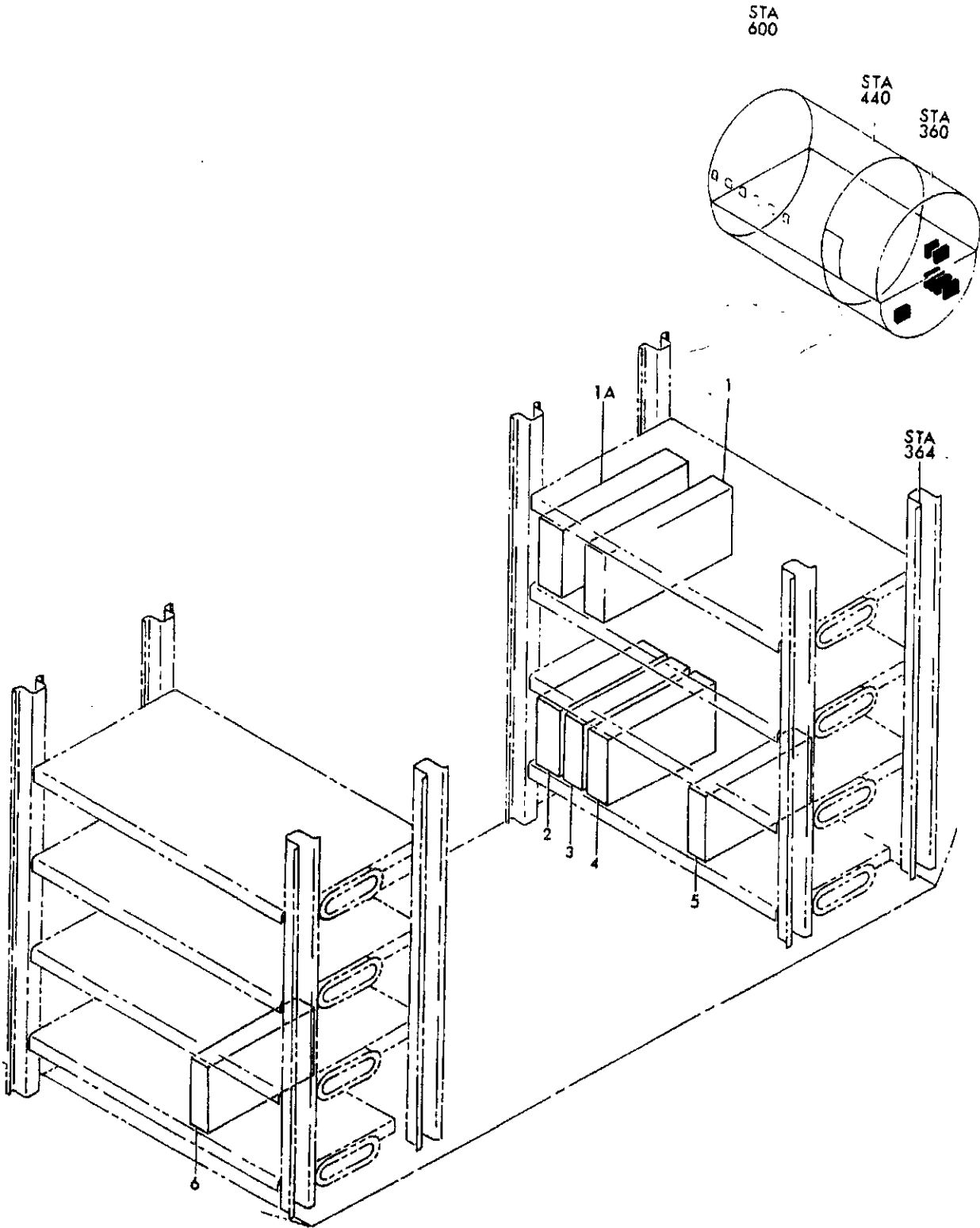


FIGURE 22B. EQUIPMENT INSTL, RADIO RACK (ENGINE INDICATING ONLY)



**PARTS CATALOG**

FIGURE & ITEM NO.	MANUFACTURER'S PART NUMBER	NOMENCLATURE							EFF FROM TO	UNITS PER ASSY
		1	2	3	4	5	6	7		
22B  4	65-1343-205	EQUIPMENT INSTL, LH RADIO RACK (ENGINE INDICATING ONLY)							5199	RF
	173263-0006	. EQUIPMENT INSTL, LH RADIO RACK (ENGINE INDICATING . . ONLY) (SEE 24-3, FIG. 6F, ITEM 9) . . . AMPLIFIER, ENGINE VIBRATION (V09384). . . . . . . . FOR REFERENCE TO OTHER EQUIPMENT DETAILS, SEE NHA .							5199 5199	

MISSING ITEM NUMBERS ARE NOT APPLICABLE

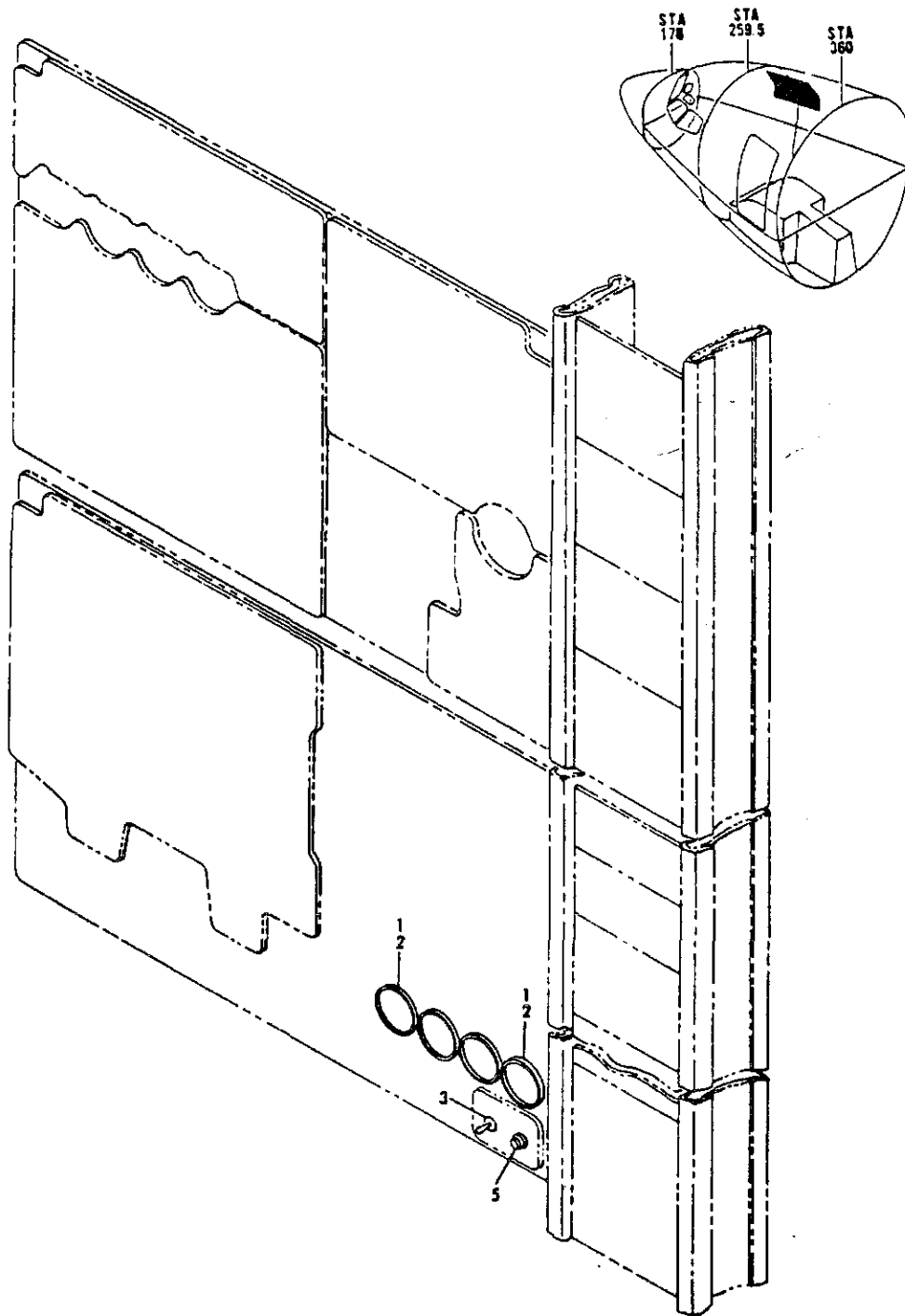


FIGURE 31M. PANEL INSTL, FLIGHT ENGINEERS LOWER (ENGINE INDICATING ONLY)



**PARTS CATALOG**

FIGURE & ITEM NO.	MANUFACTURER'S PART NUMBER	NOMENCLATURE							EFF FROM TO	UNITS PER ASSY	
		1	2	3	4	5	6	7			
R R R R R R R R R R	31M	65-58398-1	PANEL INSTL, FLIGHT ENGINEERS LOWER (ENGINE INDICATING ONLY) (SEE 25-1, FIG. 1K, ITEM 5) (DELETED BY RAF 7211.019-225)							0150	RF
		361-39-11-74192-001	PANEL INSTL, FLIGHT ENGINEERS LOWER (VS2500) (ENGINE INDICATING ONLY) (SEE 25-1, FIG. 1K, ITEM 5) (ADDED BY RAF 7211.019-225)							0150	RF
		65-58398-13	. UNIT ASSY, (ENGINE INDICATING ONLY)							0150	RF
		361-39-11-74192-001	PANEL INSTL, FLIGHT ENGINEERS LOWER (VS2500) (ENGINE INDICATING ONLY) (SEE 25-1, FIG. 1K, ITEM 5) (ADDED BY RAF 7211.019-225)							0150	RF
	1	BACC10EL3	. . . CLAMP							0150	4
	2	14-013057	. . . INDICATOR, ENGINE VIBRATION							0150	4
	3	MS35058-21	. . . SWITCH							0150	1
	5	D20011-01	. . . SWITCH, (V81640)							0150	1
			. FOR REFERENCE TO OTHER PANEL DETAILS, SEE NHA							0150	

MISSING ITEM NUMBERS ARE NOT APPLICABLE

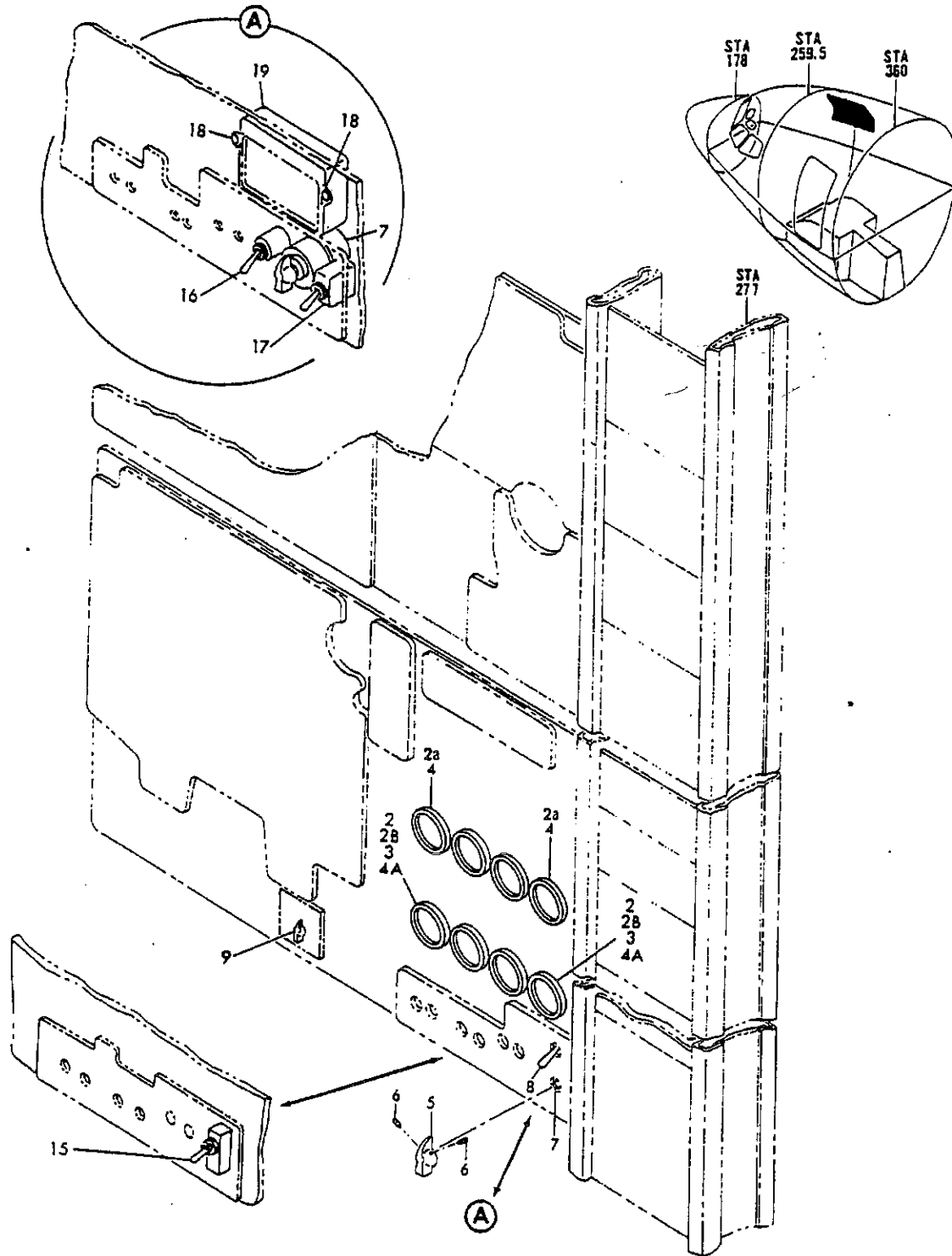


FIGURE 31P. PANEL INSTL, FLIGHT ENGINEERS LOWER (ENGINE INDICATING ONLY)



**PARTS CATALOG**

FIGURE & ITEM NO.	MANUFACTURER'S PART NUMBER	NOMENCLATURE							EFF FROM TO	UNITS PER ASSY
		1	2	3	4	5	6	7		
31P	65-58956-1	PANEL INSTL, FLIGHT ENGINEERS LOWER (ENGINE INDICATING ONLY) (SEE 25-1, FIG. 1F, ITEM 6, 25-1, FIG. 2D, ITEM 6 AND 25-1, FIG. 2E, ITEM 83)							5199	RF
	65-58956-76	. UNIT ASSY, (ENGINE INDICATING ONLY) . . . . .							5199	RF
	65-58956-88	. UNIT ASSY, (ENGINE INDICATING ONLY) . . . . .							5199	RF
2	BACC10EL3	. CLAMP . . . . .							5199	4
2A	BACC10EL3	. CLAMP . . . . .							5199	4
3	1-040-0001	. INDICATOR, ENGINE VIBRATION (V09384) . . . . .							5199	4
4	8DJ81LWZ	. TACHOMETER, N2 (V97424) . . . . . (OPTIONAL TO 8DJ81LWZ4 (V97424))							5199	4
4	8DJ81LWZ4	. TACHOMETER, N2 (V97424) . . . . . (OPTIONAL 8DJ81LWZ (V97424))							5199	4
5	66-9039	. KNOB ASSY, SMALL POINTER. . . . .							5199	1
6	LL22XD62J3	. SETSCREW, HEX SOCKET (V03038) . . . . .							5199	2
7	49-1912	. SWITCH, (V91812) . . . . .							5199	1
8	D20011-01	. SWITCH, (V81640) . . . . .							5199	1
		. FOR REFERENCE TO OTHER PANEL DETAILS, SEE NHA . . . . .							5199	

MISSING ITEM NUMBERS ARE NOT APPLICABLE

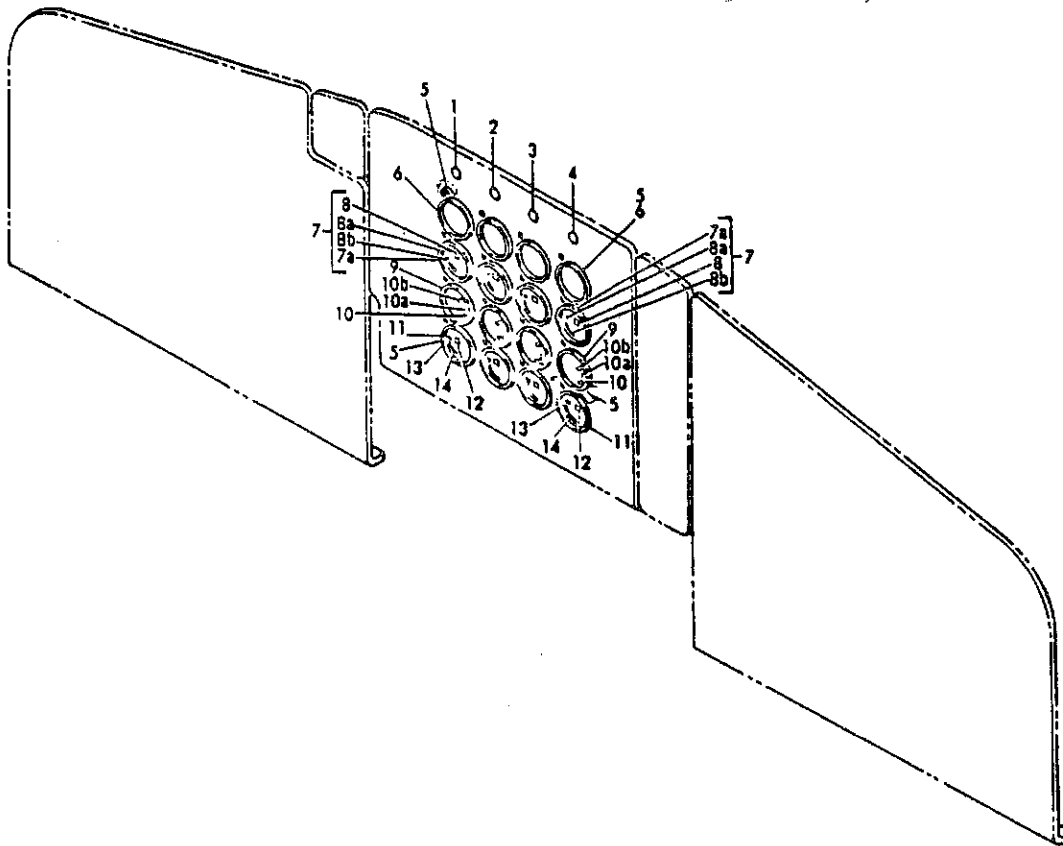
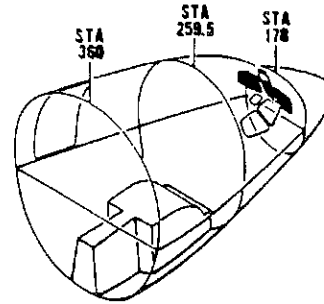


FIGURE 46F, PANEL INSTL, P9 ENGINE INSTRUMENT (ENGINE INDICATING ONLY)



**PARTS CATALOG**

FIGURE & ITEM NO.	MANUFACTURER'S PART NUMBER	1 2 3 4 5 6 7	NOMENCLATURE	EFF	UNITS
				FROM TO	PER ASSY
R 46F	65-51823-1		PANEL INSTL, P9 ENGINE INSTRUMENT (ENGINE INDICATING ONLY) (SEE 25-1, FIG. 1K, ITEM 4)	0150	RF
R	65-51823-20		UNIT ASSY, (ENGINE INDICATING ONLY)	0150	1
R	BACM9N1FA		SCOTCH-CAL, 1	0150	1
R	BACM9N1FB		SCOTCH-CAL, 2	0150	1
R	BACM9N1FC		SCOTCH-CAL, 3	0150	1
R	BACM9N1FD		SCOTCH-CAL, 4	0150	1
R	BACC10ELE3		CLAMP	0150	16
R	10-3243-17		INDICATOR, PRESSURE RATIO	0150	4
R	65-14247		INSTRUMENT INSTL, PILOT	0150	1
R	65-14247-36		INSTRUMENT AND MARKING ASSY, PILOTS TACHOMETER N1	0150	4
R	8DJ89CAK		TACHOMETER, (V97424)	0150	1
R	BACM9N00-LBN		SCOTCH-CAL, N1	0150	1
R	63-10520		SCOTCH-CAL, GREEN	0150	1
R	8B		TAPE, RED PLASTIC (V93994)	0150	1
R	9		INSTRUMENT AND MARKING ASSY, PILOTS EXHAUST GAS TEMPERATURE	0150	4
R	9		INDICATOR, (V35918)	0150	1
R	10		SCOTCH-CAL, YELLOW	0150	AR
R	10A		SCOTCH-CAL, GREEN	0150	1
R	10B		TAPE, RED PLASTIC (V93994)	0150	1
R	11		INSTRUMENT AND MARKING ASSY, PILOTS TACHOMETER N2	0150	4
R	11		TACHOMETER, (V97424)	0150	1
R	12		SCOTCH-CAL, N2	0150	1
R	13		TAPE, RED PLASTIC (V93994)	0150	AR
R	14		SCOTCH-CAL, GREEN	0150	AR
R			FOR REFERENCE TO OTHER PANEL DETAILS, SEE NHA	0150	

MISSING ITEM NUMBERS ARE NOT APPLICABLE

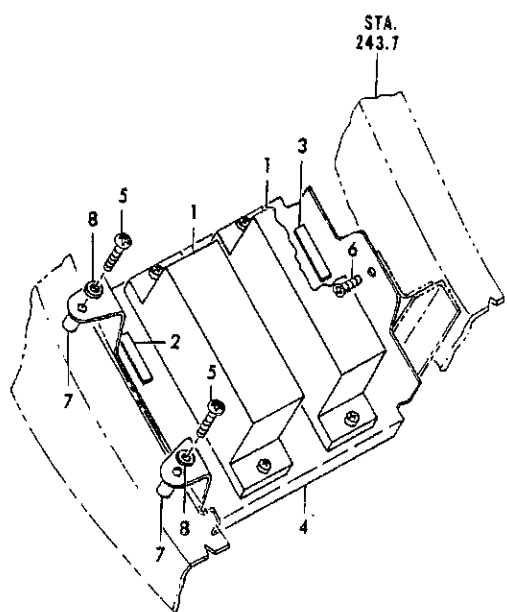
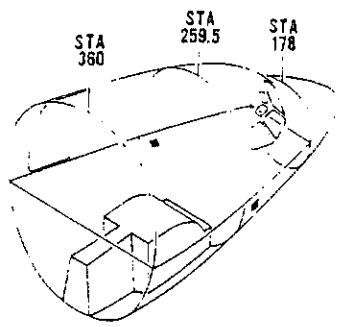


FIGURE 55. RESISTOR INSTL, THERMOCOUPLE  
 MOUNTING INSTL, THERMOCOUPLE RESISTOR



**PARTS CATALOG**

FIGURE & ITEM NO.	MANUFACTURER'S PART NUMBER	1 2 3 4 5 6 7	NOMENCLATURE	EFF FROM TO	UNITS PER ASSY
55			RESISTOR INSTL, THERMOCOUPLE. . . . .		
	69-10085		MOUNTING INSTL, THERMOCOUPLE RESISTOR . . . . .		
			. RESISTOR INSTL, THERMOCOUPLE (LH) (SEE 24-3, FIG. 1A, ITEM 15, 24-3, FIG. 1B, ITEM 14 AND 24-3, FIG. 1C, ITEM 13)		RF
1	AN5534-2		. . . RESISTOR. . . . .		2
	NAS602-10		. . . ATTACHING PARTS		4
			. . . SCREW . . . . .		
	69-10085-1		. MOUNTING INSTL, THERMOCOUPLE RESISTOR (LH) (SEE 24-3, FIG. 1A, ITEM 17, 24-3, FIG. 1B, ITEM 16 AND 24-3, FIG. 1C, ITEM 15)		RF
2	BACM10E10-2CF		. . . MARKER-ALUMINUM FOIL, ENGINE NO. 1 (LH ONLY). . . .		1
3	BACM10E10-2CG		. . . MARKER-ALUMINUM FOIL, ENGINE NO. 2 (LH ONLY). . . .		1
4	69-10085-3		. . . BRACKET ASSY, MOUNTING. . . . .		1
			. . . ATTACHING PARTS		
5	NAS603-18		. . . SCREW . . . . .		2
6	NAS603-6		. . . SCREW . . . . .		1
7	NAS43-3-24		. . . SPACER. . . . .		2
8	MS35333-5		. . . WASHER. . . . .		2

MISSING ITEM NUMBERS ARE NOT APPLICABLE

STA 360      STA 259.5      STA 178

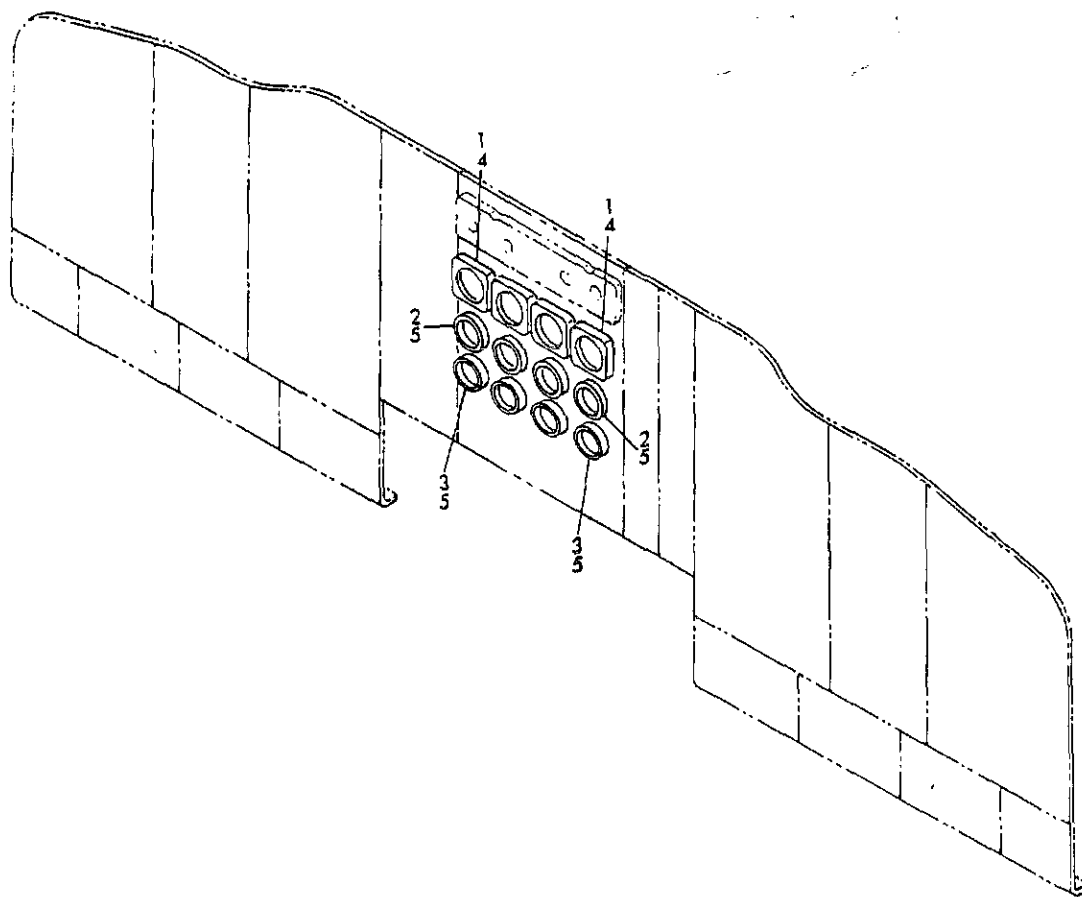
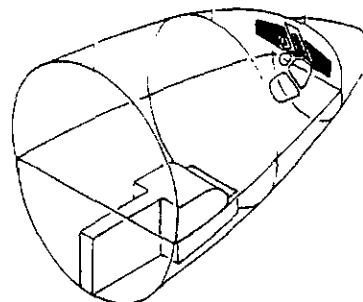


FIGURE 66. MODULE INSTL, CAPTAINS AND FIRST OFFICERS (INSTRUMENT PANELS) (ENGINE INDICATING ONLY)



**PARTS CATALOG**

FIGURE & ITEM NO.	MANUFACTURER'S PART NUMBER	NOMENCLATURE							EFF FROM TO	UNITS PER ASSY
		1	2	3	4	5	6	7		
66	65C10900-1	MODULE INSTL, CAPTAINS AND FIRST OFFICERS (INSTRUMENT .							5199	RF
		PANEL) (VARIABLE DWG; 65C10900-5003) (ENGINE								
		INDICATING ONLY) (SEE 25-1, FIG. 2E, ITEM 107A)								
2	8DJ81LWY	. TACHOMETER, NI (V97424) . . . . .							5199	4
		(OPTIONAL TO 8DJ81LWY4 (V97424))								
2	8DJ81LWY2	. TACHOMETER, NI (V97424) . . . . .							5199	4
		(OPTIONAL TO 8DJ81LWY4 (V97424))								
2	8DJ81LWY4	. TACHOMETER, NI (V97424) . . . . .							5199	4
		(OPTIONALS 8DJ81LWY, 8DJ81LWY2 (V97424))								
3	152BL708	. INDICATOR, EXHAUST GAS TEMPERATURE (V35918) . . . . .							5199	4
	65C10905-1	. MODULE ASSY, P9-2 (ENGINE INDICATING ONLY). . . . .							5199	RF
4	19748	. . CLAMP, (V98625) . . . . .							5199	4
5	BACC10EL3	. . CLAMP . . . . .							5199	8
		. FOR REFERENCE TO OTHER MODULE DETAILS, SEE NHA. . . . .							5199	

MISSING ITEM NUMBERS ARE NOT APPLICABLE

# BOEING

## 707

### PARTS CATALOG (MAINTENANCE)

#### CHAPTER 78

#### EXHAUST

#### TABLE OF CONTENTS

SECTION	FIGURE
<b>78-01 THRUST REVERSER AND SOUND SUPPRESSOR</b>	
CASCADE INSTL, ENGINE NO. 1 AFT THRUST REVERSER . . . . .	30
CASCADE INSTL, ENGINE NO. 2 AFT THRUST REVERSER . . . . .	30
CASCADE INSTL, ENGINE NO. 3 AFT THRUST REVERSER . . . . .	30
CASCADE INSTL, ENGINE NO. 4 AFT THRUST REVERSER . . . . .	30
CLAMSHELL INSTL, JT3D THRUST REVERSER . . . . .	18
DRAIN INSTL, FAN ENGINE . . . . .	32
HINGE AND MECHANISM INSTL, JT3D ENGINE AFT THRUST REVERSER CLAMSHELL DOOR . . . . .	16
PLUG INSTL, ENGINE EXHAUST. . . . .	13
SEAL ASSY, JT3D THRUST REVERSER FORWARD . . . . .	10A
SEAL ASSY, JT3D THRUST REVERSER FORWARD . . . . .	10A
SLEEVE INSTL, AFT THRUST REVERSER . . . . .	4
SPARES KIT, AFT THRUST REVERSER AND TAILPIPE SPECIAL. . . . .	2
SPARES KIT, AFT THRUST REVERSER CASCADE SPECIAL . . . . .	31
SWITCH INSTL, AFT THRUST REVERSER INDICATOR . . . . .	23
TAILPIPE INSTL, JT3D ENGINE THRUST REVERSER . . . . .	3
THRUST REVERSER AND TAILPIPE INSTL, ENGINE NO. 1 AFT. . . . .	2
THRUST REVERSER AND TAILPIPE INSTL, ENGINE NO. 2 AFT. . . . .	2
THRUST REVERSER AND TAILPIPE INSTL, ENGINE NO. 3 AFT. . . . .	2
THRUST REVERSER AND TAILPIPE INSTL, ENGINE NO. 4 AFT. . . . .	2
THRUST REVERSER ASSY, JT3D. . . . .	10
<b>78-02 THRUST REVERSER CONTROLS</b>	
ACTUATOR ASSY, AFT THRUST REVERSER LOWER. . . . .	6A
ACTUATOR ASSY, AFT THRUST REVERSER UPPER. . . . .	5A
ACTUATOR INSTL, AFT THRUST REVERSER LOWER . . . . .	6
ACTUATOR INSTL, AFT THRUST REVERSER UPPER . . . . .	5
CAP INSTL, NACELLE STRUT THRUST REVERSER. . . . .	17A
FOLLOW-UP INSTL, AFT THRUST REVERSER CONTROL. . . . .	7
FOLLOW-UP INSTL, AFT THRUST REVERSER. . . . .	8
LOCK ASSY, AFT THRUST REVERSER ACTUATOR LOWER . . . . .	6B
PLUMBING INSTL, FAN ENGINE AFT REVERSER . . . . .	15A
PLUMBING INSTL, FAN ENGINE THRUST REVERSER SUPPLY LINES . . . . .	14A
PLUMBING INSTL, FAN ENGINE THRUST REVERSER UPPER ACTUATOR . . . . .	14
PLUMBING INSTL, INBOARD FAN ENGINE THRUST REVERSE . . . . .	17B
PLUMBING INSTL, OUTBOARD NACELLE STRUT THRUST REVERSER . . . . .	17A
STOP ASSY, AFT THRUST REVERSER SLEEVE . . . . .	20
TUBE AND EQUIPMENT INSTL, THRUST REVERSER GROUND AIR RECEPTACLE INBOARD . . . . .	19
TUBE AND EQUIPMENT INSTL, THRUST REVERSER GROUND AIR RECEPTACLE OUTBOARD. . . . .	19
<b>78-03 INSTRUMENT PANELS</b>	
MODULE INSTL, CAPTAINS AND FIRST OFFICERS . . . . .	15F
PANEL INSTL, P9 ENGINE INSTRUMENT . . . . .	15
<b>78-04 FAN REVERSER</b>	
ACTUATOR ASSY, FAN REVERSER . . . . .	10
BRACKET INSTL, FAN REVERSER . . . . .	5
DIAPHRAGM INSTL, FAN ENGINE FAN AIR EXHAUST . . . . .	6
DOOR INSTL, FAN REVERSER SLEEVE TO STRUT. . . . .	4
FAN REVERSER INSTL, FAN ENGINE NO. 1. . . . .	1
FAN REVERSER INSTL, FAN ENGINE NO. 1. . . . .	1B
FAN REVERSER INSTL, FAN ENGINE NO. 2. . . . .	1
FAN REVERSER INSTL, FAN ENGINE NO. 2. . . . .	1B
FAN REVERSER INSTL, FAN ENGINE NO. 3. . . . .	1
FAN REVERSER INSTL, FAN ENGINE NO. 3. . . . .	1B
FAN REVERSER INSTL, FAN ENGINE NO. 4. . . . .	1
FAN REVERSER INSTL, FAN ENGINE NO. 4. . . . .	1B
RING ASSY, FAN REVERSER COWL. . . . .	3
SPECIAL SPARES ASSY, FAN REVERSER COWL RING . . . . .	3
VANE ASSY, FAN REVERSER TURNING . . . . .	2
<b>78-05 FAN REVERSER CONTROLS</b>	
FOLLOW-UP INSTL, FAN REVERSER . . . . .	1
PLUMBING INSTL, FAN ENGINE FORWARD REVERSER . . . . .	2
SPARES ASSY, FAN ENGINE TUBING SUPPORT ADDED BY P.E.R. REV 206 . . . . .	3
SPARES ASSY, FAN ENGINE TUBING SUPPORT ADDED BY P.E.R. REV 216 . . . . .	3
SPECIAL SPARES ASSY, FAN REVERSER FOLLOW-UP . . . . .	1