



**BOEING**  
707  
**PARTS CATALOG (MAINTENANCE)**

CHAPTER 80

STARTING

TABLE OF CONTENTS

SECTION	FIGURE
<b>80-01 STARTING SYSTEM</b>	
BOTTLE INSTL, ENGINE STARTER AIR LH . . . . .	33
BOTTLE INSTL, ENGINE STARTER AIR RH . . . . .	31
BRACKET ASSY, STATION 360 TO 380 THROTTLE OPERATED SWITCH . . . . .	52
CONNECTION INSTL, AIR STARTER SYSTEM GROUND . . . . .	42
DRAIN INSTL, FAN ENGINE . . . . .	10
PLUG INSTL, COMPRESSOR DELETION . . . . .	15A
PLUMBING INSTL, FAN ENGINE AIR STARTER PLUG . . . . .	5
PLUMBING INSTL, FAN ENGINE AIR STARTER . . . . .	5
PLUMBING INSTL, INBOARD MACELLE STRUT AIR START . . . . .	8A
STARTER INSTL, FAN ENGINE . . . . .	2
STOWAGE INSTL, STARTER VALVE OVERRIDE TOOL . . . . .	48
SWITCH ASSY, STATION 360 TO 380 THROTTLE OPERATED . . . . .	54
TUBING INSTL, BODY SECTION 54 STARTER COMPRESSOR . . . . .	28
TUBING INSTL, SECTION 24 FUEL AIR STARTER . . . . .	14
VALVE INSTL, AIR STARTER RELIEF . . . . .	46
VALVE INSTL, ENGINE START SYSTEM REGULATOR AND SOLENOID . . . . .	41
<b>80-02 INSTRUMENT PANELS</b>	
MODULE INSTL, P13 PILOTS OVERHEAD . . . . .	21
MODULE INSTL, P13 PILOTS OVERHEAD . . . . .	22
PANEL INSTL, FLIGHT ENGINEERS LOWER . . . . .	6K

**BOEING**  
*Intercontinental*  
**707**   
**PARTS CATALOG**

**SECTION 01**  
**STARTING SYSTEM**

RAF  
NOV 21/90

80-01  
PAGE 1

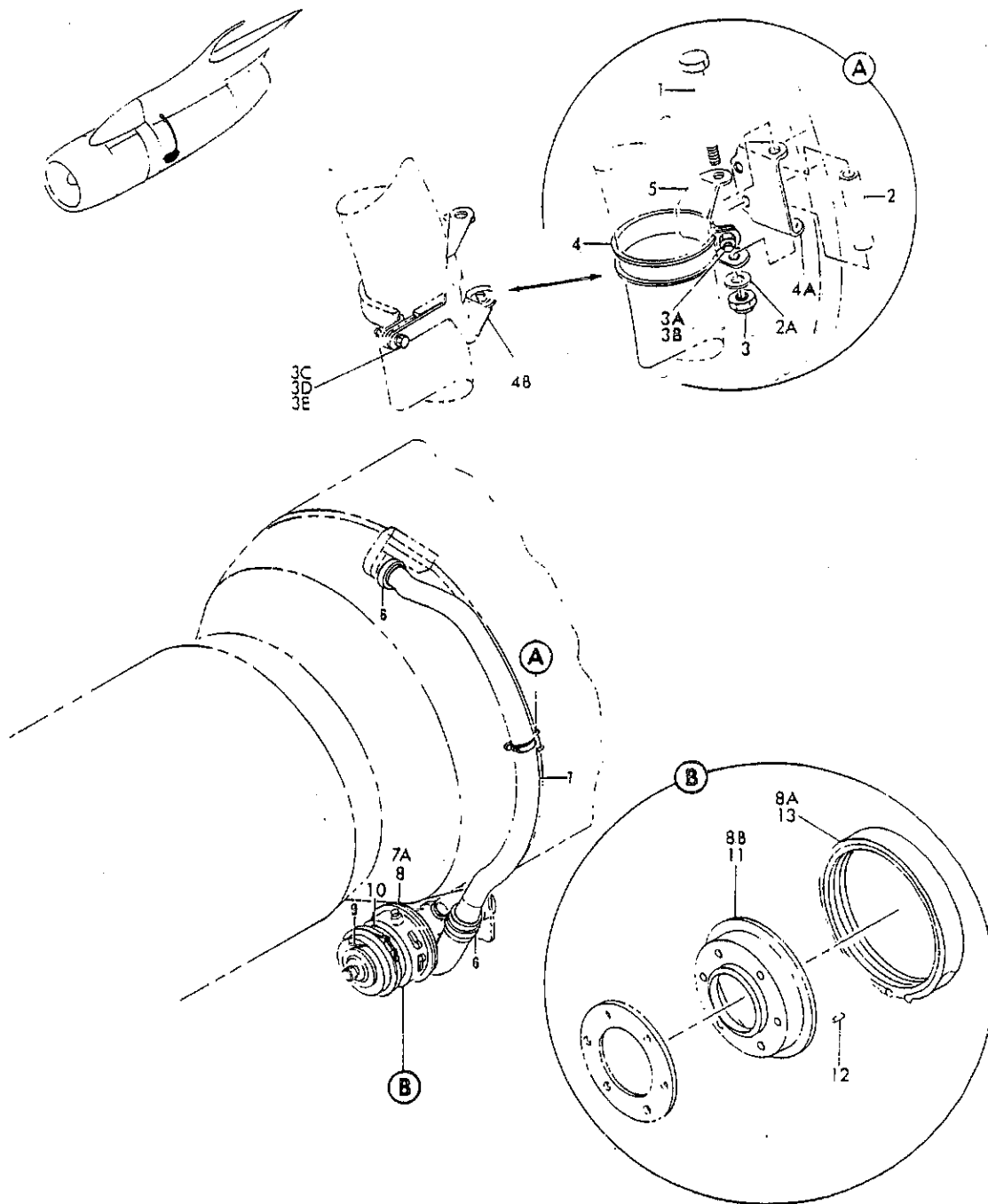


FIGURE 2. STARTER INSTL, FAN ENGINE



**PARTS CATALOG**

FIGURE & ITEM NO.	MANUFACTURER'S PART NUMBER	NOMENCLATURE							EFF FROM TO	UNITS PER ASSY	
		1	2	3	4	5	6	7			
R R R R R R R R R R R R R R R R R R R R	2	65-11625	STARTER INSTL, FAN ENGINE (SEE 71-1, FIG. 5, ITEM 16, 71-1, FIG. 58, ITEM 64, 71-1, FIG. 5E, ITEM 77 AND 71-1, FIG. 5G, ITEM 73)							0150	RF
		65-11625-8	STARTER INSTL, FAN ENGINE (SEE 71-1, FIG. 5E, ITEM 77, 71-1, FIG. 5G, ITEM 73 AND 71-1, FIG. 5H, ITEM 64)							5151	RF
		65-11625-16	STARTER INSTL, FAN ENGINE (SEE 71-1, FIG. 5G, ITEM. . . 73, AND 71-1, FIG. 5H, ITEM 64)							5299	RF
	1	8AC830NF4-36	. BOLT. . . . .							0150	1
	1	8AC830NF4-38	. BOLT. . . . .							5199	1
	2	NAS1057T4-203	. SPACER. . . . .								1
	2A	AN960C416	. WASHER. . . . .							5199	1
	3	BACN10JC4	. NUT . . . . .								1
	3C	BAC830NE3-3	. BOLT. . . . .								1
	3D	AN960C10	. WASHER. . . . .								1
	3E	BACN10JC3	. NUT . . . . .								1
	4	8ACC10DDC40A	. CLAMP . . . . .								1
	4B	69-60270-1	. BRACKET, CLAMP RETAINER DUCT. . . . .							5199	1
	5	66-10689-800	. CHANNEL, STARTER DUCT SUPPORT . . . . .								1
	6	8ACC10DP300	. CLAMP . . . . .								2
	7	65-11928	. DUCT ASSY, PNEUMATIC START INLET. . . . .								1
	7A	10-60404-13	. STARTER, DUAL PURPOSE PNEUMATIC (USED ON 65-11625-16)							5299	1
	8	10-60404	. STARTER, DUAL PURPOSE PNEUMATIC (SAME AS 356364-1 (V99193)) (USED ON 65-11625, -8)							0151	1
	8	356364-1	. STARTER, DUAL PURPOSE PNEUMATIC (V99193) (SAME AS BAC SPEC NO. 10-60404) (USED ON 65-11625, -8)							0151	1
		AN960-616	ATTACHING PARTS								
	NAS679A6	. WASHER. . . . .								6	
		. NUT . . . . .								6	
M 8A	N4401S1-672M	. . CLAMP, (V945B1) . . . . .								1	
M 8B	353719	. . FLANGE ASSY, (V99193) . . . . .								1	
9	AN4047-1	. GASKET. . . . .								1	

MISSING ITEM NUMBERS ARE NOT APPLICABLE

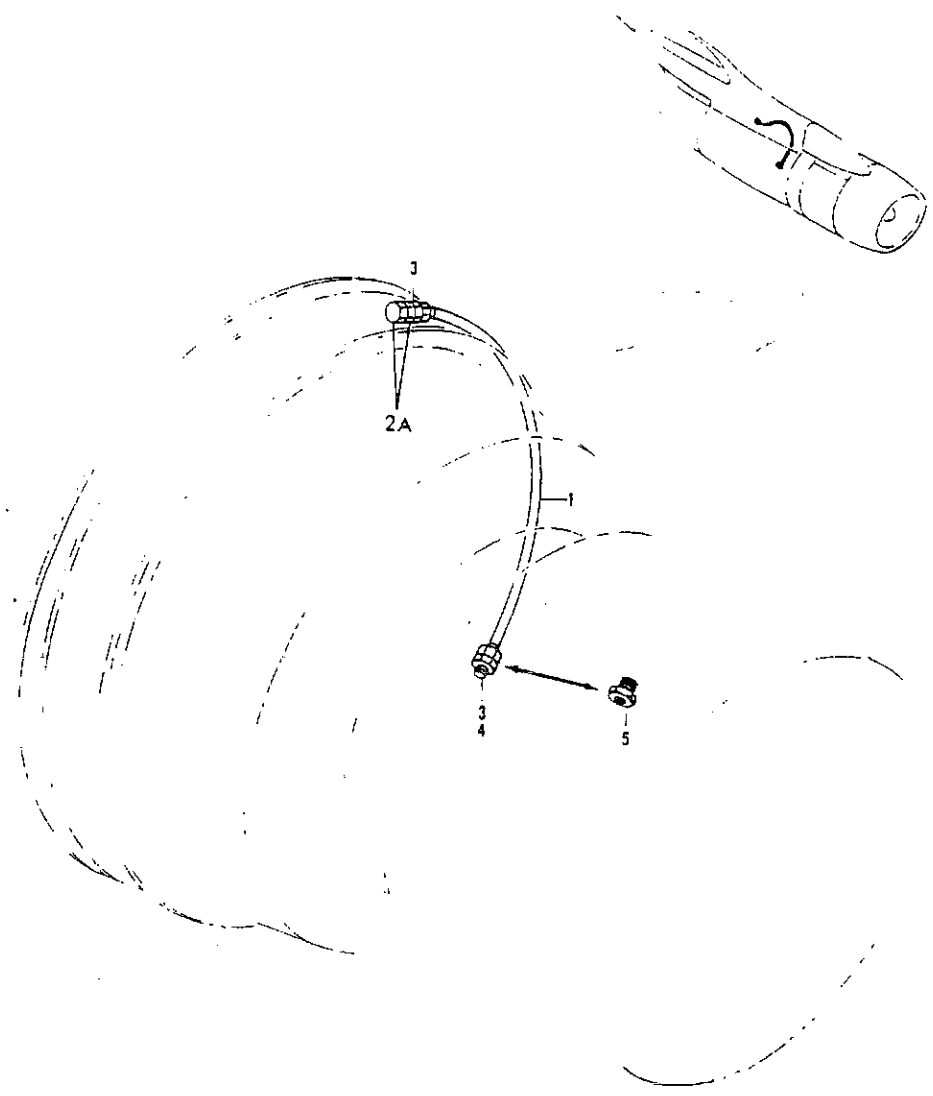


FIGURE 5. PLUMBING INSTL, FAN ENGINE AIR STARTER AND PLUG (STARTING ONLY)



PARTS CATALOG

FIGURE & ITEM NO.	MANUFACTURER'S PART NUMBER	1 2 3 4 5 6 7	NOMENCLATURE	EFF	UNITS
				FROM TO	PER ASSY
R R R R R R R R R R R R	5	65-11687-225	PLUMBING INSTL, FAN ENGINE AIR STARTER PLUG (ENGINES . . . NO. 1 AND 4) (SEE 71-1, FIG. 5E, ITEM 48A, 71-1, FIG. 5G, ITEM 43 AND 71-1, FIG. 5H, ITEM 38)	5199	RF
		65-11687-225	PLUMBING INSTL, FAN ENGINE AIR STARTER PLUG (SEE 71-1, FIG. 5E, ITEM 48A AND 71-1, FIG. 5G, ITEM 43)	0150	RF
		65-11687-224	PLUMBING INSTL, FAN ENGINE AIR STARTER (ENGINES NO. 2 . . . AND 3) (SEE 71-1, FIG. 5E, ITEM 48, 71-1, FIG. 5G, ITEM 43 AND 71-1, FIG. 5H, ITEM 38)	5199	RF
	1	65-11687-803	. TUBE ASSY, AIR START 3/4 .035 AISI304 (OPTIONALS. . . AISI321, AISI347) (ENGINES NO. 2 AND 3)	5199	1
		MS21921-12	. . NUT . . . . .	5199	2
		MS21922-12	. . SLEEVE . . . . .	5199	2
		BACS13AP12	(OPTIONAL BACS13AP12)		
			. . SLEEVE, . . . . .	5199	2
			(OPTIONAL TO MS21922-12)		
	2	10-60110-13	. HOSE ASSY, HIGH PRESSURE START SYSTEM AIR (ENGINES. . . NO. 2 AND 3)	5199	1
	3	MS21902-12	. UNION, (ENGINES NO. 2 AND 3). . . . .	5199	2
	4	BACG10U12	. GASKET, (ENGINES NO. 1 AND 4) . . . . .		1
4	BACG10U12	. GASKET, (ENGINE NO. 2). . . . .	0150	1	
4	BACG10U12	. GASKET, (ENGINE NO. 3). . . . .	0150	1	
5	AN814-12L	. PLUG AND BLEEDER, (ENGINE NO. 2). . . . .	0150	1	
5	AN814-12L	. PLUG AND BLEEDER, (ENGINE NO. 3). . . . .	0150	1	
5	AN814-12L	. PLUG AND BLEEDER, (ENGINES NO. 1- AND 4) . . . . .		1	
		. FOR REFERENCE TO OTHER PLUMBING DETAILS, SEE NHA. . .			

MISSING ITEM NUMBERS ARE NOT APPLICABLE

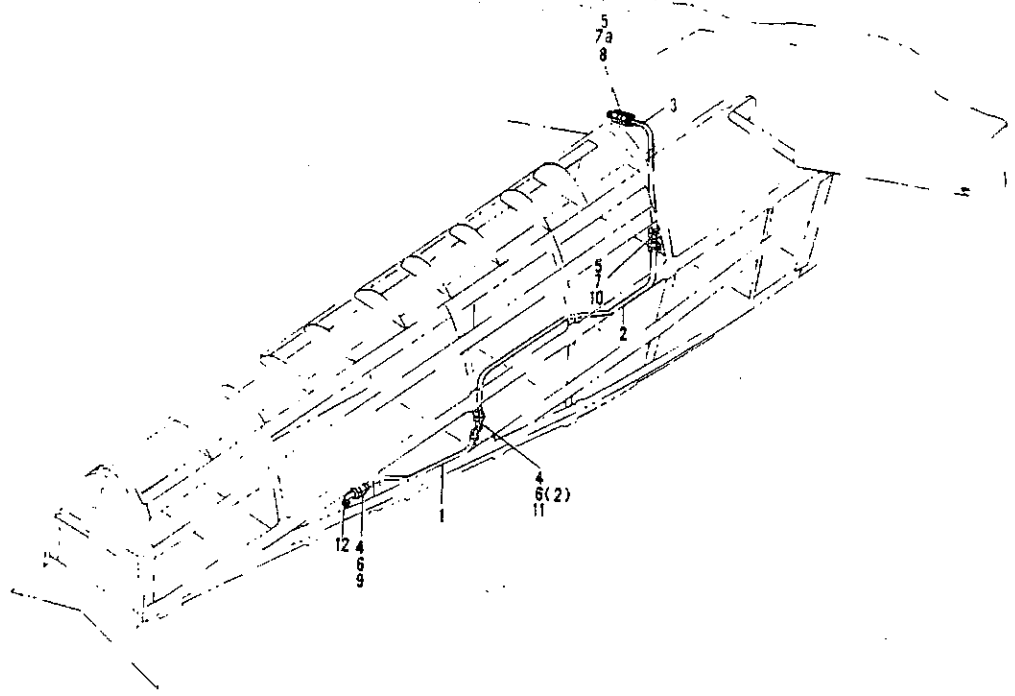
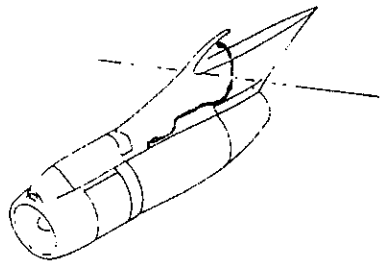


FIGURE 8A. PLUMBING INSTL, INBOARD NACELLE STRUT AIR START

DETAILED PARTS LIST  
80-01-8A  
PAGE 0

80-01-8A

NOV 21/90



PARTS CATALOG

FIGURE & ITEM NO.	MANUFACTURER'S PART NUMBER	NOMENCLATURE							EFF FROM TO	UNITS PER ASSY
		1	2	3	4	5	6	7		
8A	65-11904-503	PLUMBING INSTL, INBOARD NACELLE STRUT AIR START . . . . .							5199	
		. PLUMBING INSTL, INBOARD NACELLE STRUT AIR START (SEE 54-1, FIG. 21A, ITEM 34, 54-1, FIG. 21B, ITEM 35 AND 54-1, FIG. 21C, ITEM 18)							5199	RF
1	65-11904-43	. . . TUBE ASSY, AIR START 3/4 .028 AISI304 . . . . .							5199	1
	MS21921-12	. . . NUT . . . . .							5199	2
	8ACS13AP12	. . . SLEEVE, (OPTIONAL MS21922-12) . . . . .							5199	2
2	65-11904-501	. . . TUBE ASSY, AIR START 3/4 IN. .035 6061-T6 . . . . .							5199	1
3	65-11904-318	. . . TUBE ASSY, AIR START 3/4 IN. .035 6061-T6 (NACELLE NO. 2)							5199	1
	MS21921D12	. . . NUT . . . . .							5199	2
	8ACS13AP12	. . . SLEEVE, (OPTIONAL MS21922-12) . . . . .							5199	2
4	AN924-12	. . . NUT . . . . .							5199	2
5	AN924-12D	. . . NUT . . . . .							5199	2
6	AN960-1716	. . . WASHER . . . . .							5199	3
7	AN960PD1716	. . . WASHER . . . . .							5199	1
7A	AN960PD1716	. . . WASHER . . . . .							5199	1
8	MS21924D12	. . . UNION . . . . .							5199	1
9	MS21907-12	. . . ELBOW . . . . .							5199	1
10	MS21907D12	. . . ELBOW . . . . .							5199	1
11	MS21908-12	. . . ELBOW . . . . .							5199	1
		(OPTIONAL BACE21BN1212J)								
11	BACE21BN1212J	. . . ELBOW . . . . .							5199	1
		(OPTIONAL TO MS21908-12)								

MISSING ITEM NUMBERS ARE NOT APPLICABLE

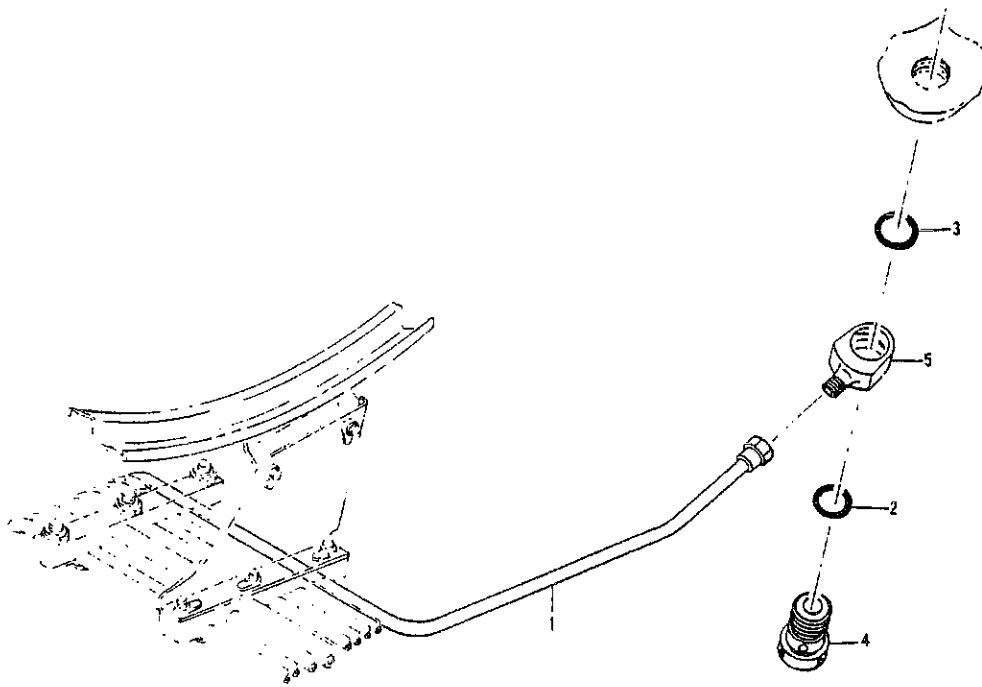
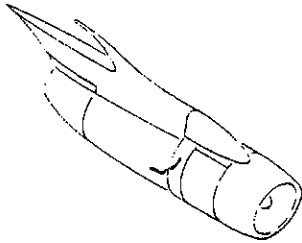


FIGURE 10. DRAIN INSTL, FAN ENGINE (STARTING ONLY)



**PARTS CATALOG**

FIGURE & ITEM NO.	MANUFACTURER'S PART NUMBER	1 2 3 4 5 8 7	NOMENCLATURE	EFF	UNITS
				FROM TO	PER ASSY
R R R R	10	65-11660-89	DRAIN INSTL, FAN ENGINE (STARTING ONLY) (SEE 71-1, FIG. 5E, ITEM 53, 71-1, FIG. 5G, ITEM 48 AND 71-1, FIG. 5H, ITEM 41)	0150	RF
		65-11660-99	DRAIN INSTL, FAN ENGINE (STARTING ONLY) (SEE 71-1, FIG. 5G, ITEM 48 AND 71-1, FIG. 5H, ITEM 41)	5199	RF
	1	65-11660-881	. TUBE ASSY, DRAIN 1/4 .028 AISI304 (OPTIONALS AISI321, AISI347)		1
		MS21921-4	. . NUT . . . . .		1
		BACSL3AP4	. . SLEEVE, (OPTIONAL MS21922-4). . . . .		1
	2	BACG10T11	. GASKET. . . . .		1
	3	BACG10U8	. GASKET. . . . .		1
	4	69-10967-1	. BOLT, ENGINE DRAIN UNIVERSAL FITTING. . . . .		1
	5	69-10967	. ELBOW, ENGINE DRAIN UNIVERSAL FITTING . . . . .		1
			. FOR REFERENCE TO OTHER DRAIN DETAILS, SEE NHA . . . . .		

MISSING ITEM NUMBERS ARE NOT APPLICABLE

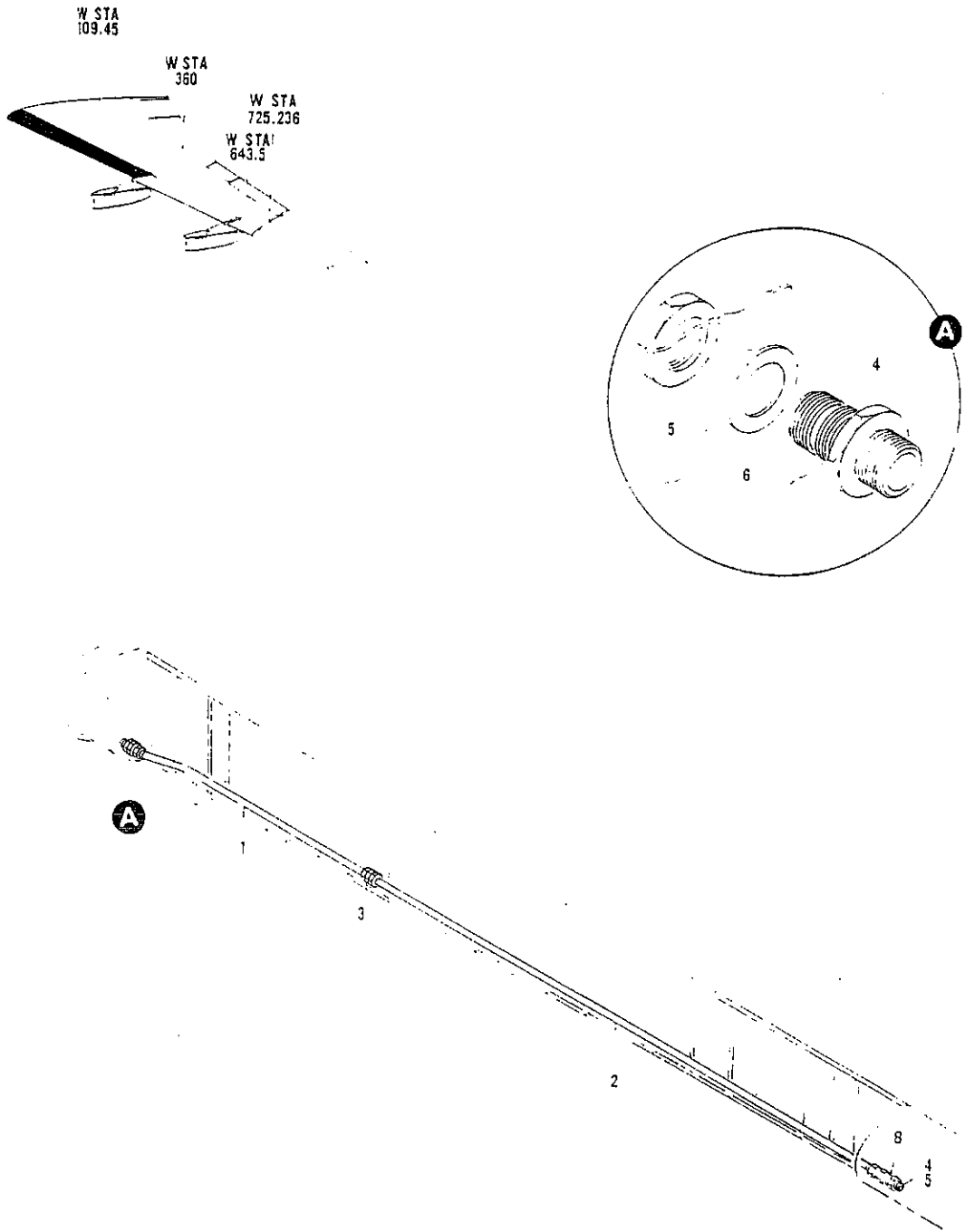


FIGURE 14. TUBING INSTL, SECTION 24 FUEL AIR STARTER



**PARTS CATALOG**

FIGURE & ITEM NO.	MANUFACTURER'S PART NUMBER	NOMENCLATURE							EFF FROM TO	UNITS PER ASSY
		1	2	3	4	5	6	7		
14	65-8913-19	TUBING INSTL, SECTION 24 FUEL AIR STARTER (LH) (SEE . . . 71-4, FIG. 1, ITEM 1)							5199	RF
	65-8913-20	TUBING INSTL, SECTION 24 FUEL AIR STARTER (RH) (SEE . . . 71-4, FIG. 1, ITEM 1)							5199	RF
1	65-8913-21	. TUBE ASSY, FUEL AIR STARTER 3/4 .035 6061-T6 (LH. . . ONLY)							5199	1
1	65-8913-22	. TUBE ASSY, FUEL AIR STARTER 3/4 .035 6061-T6 (RH. . . ONLY)							5199	1
2	65-8913-23	. TUBE ASSY, FUEL AIR STARTER 3/4 .035 6061-T6 (LH. . . ONLY)							5199	1
2	65-8913-24	. TUBE ASSY, FUEL AIR STARTER 3/4 .035 6061-T6 (RH. . . ONLY)							5199	1
	MS21921D12	. . . NUT . . . . .							5199	2
	BACS13AP12	. . . SLEEVE, (OPTIONAL MS21922-12) . . . . .							5199	2
3	MS21902D12	. UNION . . . . .							5199	1
4	MS21924D12	. UNION . . . . .							5199	2
5	AN924-12D	. NUT . . . . .							5199	2
6	AN960PD1716	. WASHER . . . . .							5199	1
8	69-52130-1	. SPACER . . . . .							5199	1

MISSING ITEM NUMBERS ARE NOT APPLICABLE

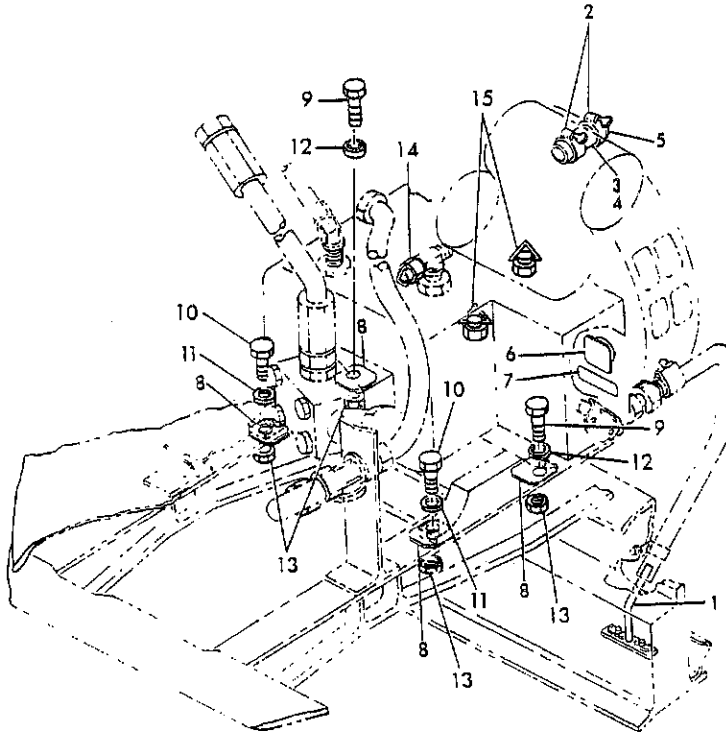
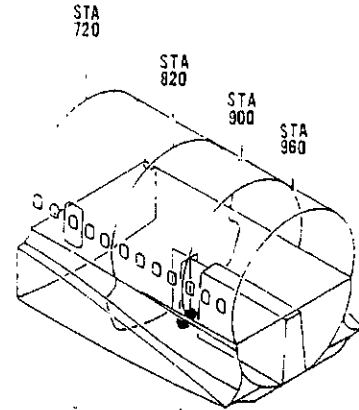


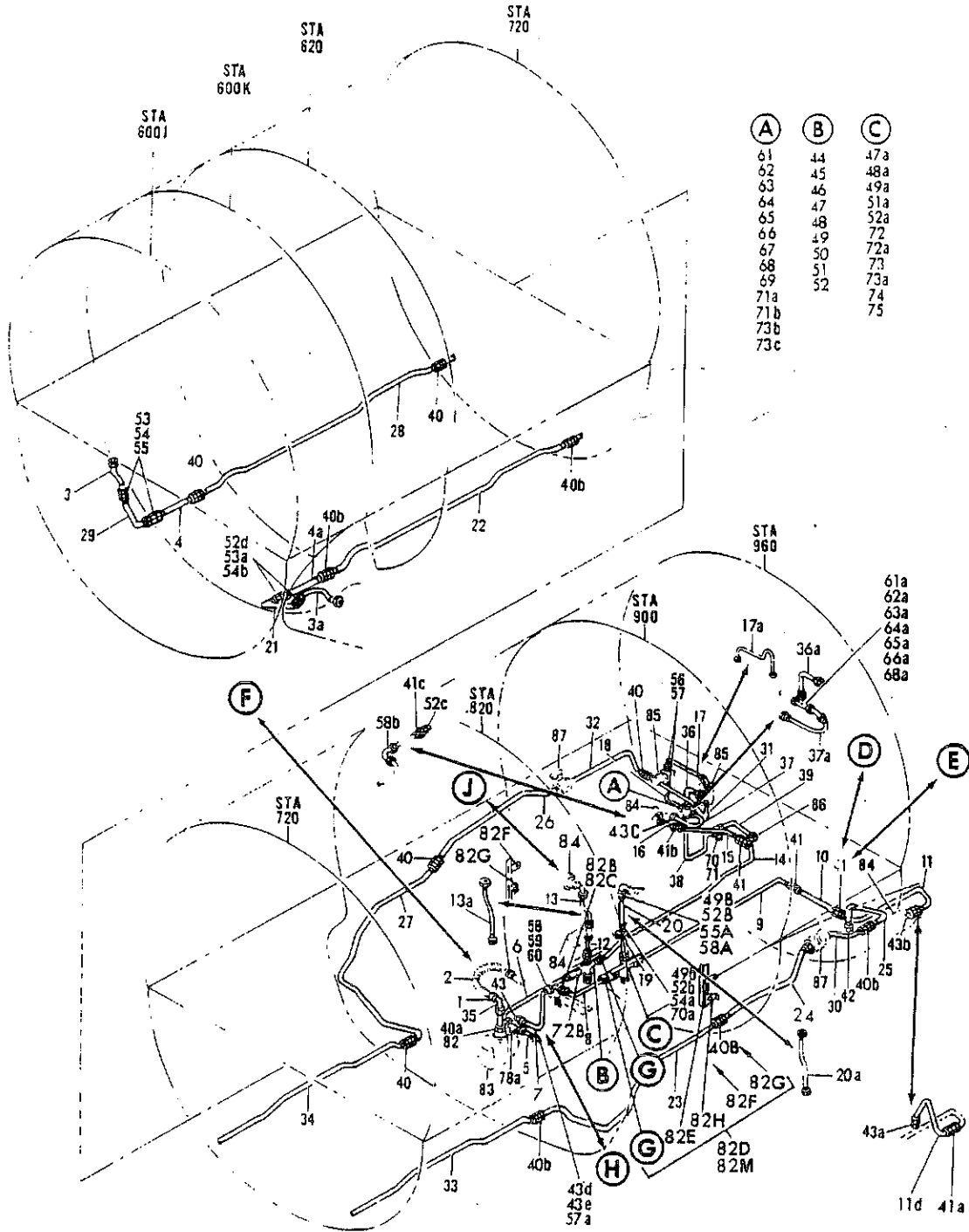
FIGURE 15A. COMPRESSOR INSTL, ENGINE STARTER AIR  
PLUG INSTL, COMPRESSOR DELETION



**PARTS CATALOG**

FIGURE & ITEM NO.	MANUFACTURER'S PART NUMBER	NOMENCLATURE							EFF FROM TO	UNITS PER ASSY
		1	2	3	4	5	6	7		
15A	65-5264-3	PLUG INSTL, COMPRESSOR DELETION (SEE 71-4, FIG. 1, . . .							5199	RF
		ITEM 5)								
2	AN737TW38	. CLAMP . . . . .							5199	2
3	65-5264-2	. HOSE, ENGINE STARTER AIR COMPRESSOR . . . . .							5199	1
5	69-31132-1	. PLUG ASSY, AIR COMPRESSOR INLET BOSS. . . . .							5199	1

MISSING ITEM NUMBERS ARE NOT APPLICABLE



(A)	(B)	(C)
61	44	47a
62	45	48a
63	46	49a
64	47	51a
65	48	52a
66	49	72
67	50	72a
68	51	73
69	52	73a
71a		74
71b		75
73b		
73c		

FIGURE 28. TUBING INSTL, BODY SECTION 54 STARTER COMPRESSOR (SHEET 1)

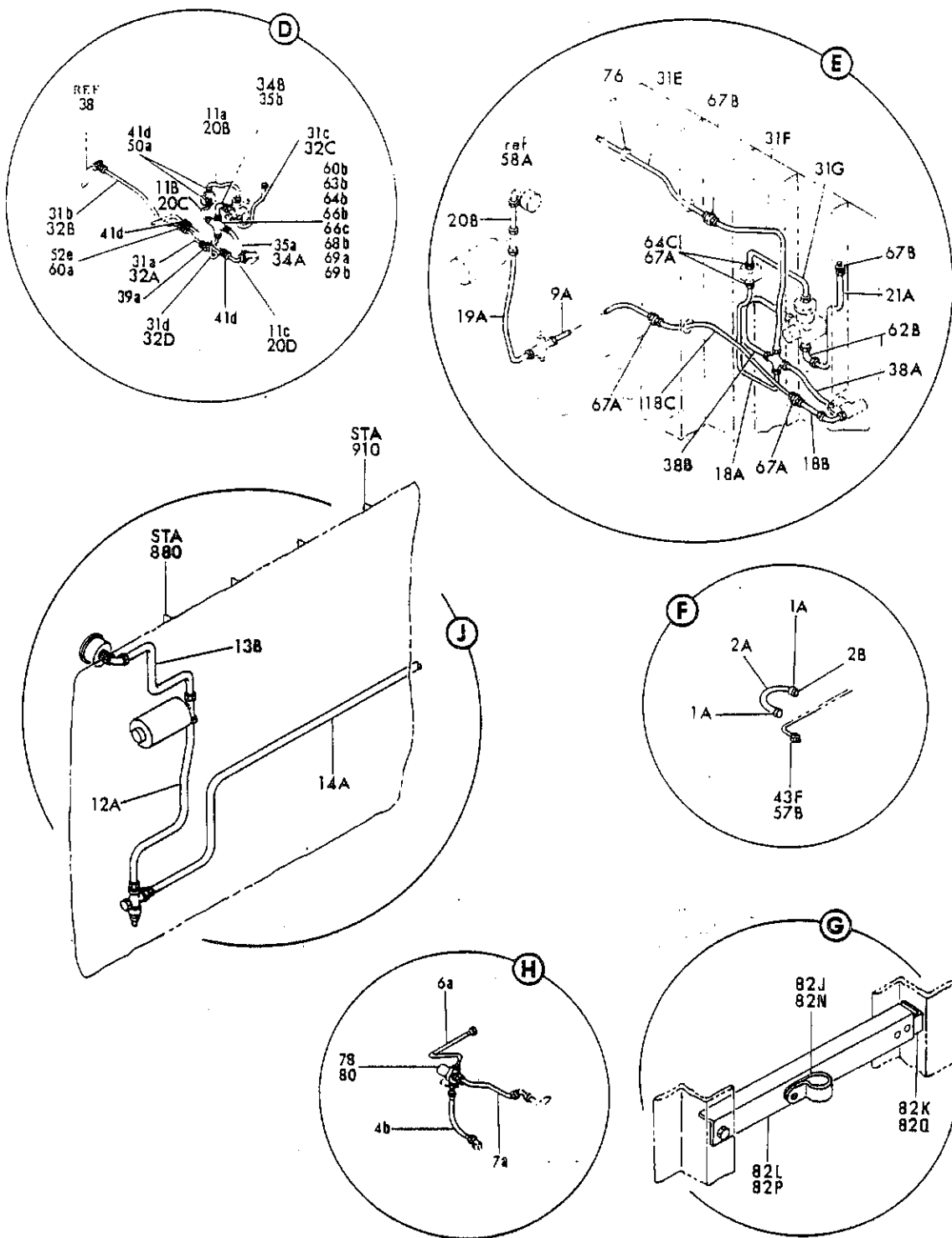


FIGURE 28. TUBING INSTL. BODY SECTION 54 STARTER COMPRESSOR (SHEET 2)



PARTS CATALOG

FIGURE & ITEM NO.	MANUFACTURER'S PART NUMBER	NOMENCLATURE	EFF	UNITS
			FROM TO	PER ASSY
28	65-2933-407	TUBING INSTL, BODY SECTION 54 STARTER COMPRESSOR (SEE 71-4, FIG. 1, ITEM 2)	5199	RF
	65-2933-480	TUBING INSTL, BODY SECTION 54 STARTER COMPRESSOR (SEE 71-4, FIG. 1, ITEM 2)	5199	RF
1	AN737TW38	. CLAMP	5199	2
3	601182-12D0330	. HOSE ASSY, (V00624)	5199	1
3A	601182-12D0330	. HOSE ASSY, (V00624)	5199	1
4	601182-12D0150	. HOSE ASSY, (V00624)	5199	1
4A	601182-12D0150	. HOSE ASSY, (V00624)	5199	1
8	65-2933-9	. TUBE ASSY, HIGH PRESSURE AIR START 1/4 .028 AISI304	5199	1
9	65-2933-158	. TUBE ASSY, HIGH PRESSURE AIR START 1/4 IN. .028 AISI304	5199	1
10	65-2933-103	. TUBE ASSY, HIGH PRESSURE AIR START 1/4 IN. .028 AISI304	5199	1
11	65-2933-252	. TUBE ASSY, HIGH PRESSURE AIR START 1/4 IN. .028 AISI304	5199	1
12	65-2933-349	. TUBE ASSY, HIGH PRESSURE AIR START 1/4 IN. .028 AISI304	5199	1
13	65-2933-350	. TUBE ASSY, HIGH PRESSURE AIR START 1/4 IN. .028 AISI304	5199	1
14	65-2933-370	. TUBE ASSY, HIGH PRESSURE AIR START 1/4 IN. .028 AISI304	5199	1
15	65-2933-369	. TUBE ASSY, HIGH PRESSURE AIR START 1/4 IN. .028 AISI304	5199	1
16	65-2933-368	. TUBE ASSY, HIGH PRESSURE AIR START 1/4 IN. .028 AISI304	5199	1
17A	65-2933-408	. TUBE ASSY, HIGH PRESSURE AIR START 1/4 .028 AISI304	5199	1
18	65-2933-342	. TUBE ASSY, HIGH PRESSURE AIR START 1/4 IN. .028 AISI304	5199	1
19	65-2933-351	. TUBE ASSY, HIGH PRESSURE AIR START 1/4 IN. .028 AISI304	5199	1
20	65-2933-352	. TUBE ASSY, HIGH PRESSURE AIR START 1/4 IN. .028 AISI304	5199	1
	MS21921-4D	. NUT	5199	2
	BACS13AP4	. SLEEVE	5199	2
21	65-2933-337	. TUBE ASSY, AIR START 3/4 IN. .035 6061-T6	5199	1
22	65-2933-358	. TUBE ASSY, AIR START 3/4 IN. .035 6061-T6	5199	1
23	65-2933-458	. TUBE ASSY, AIR START 3/4 IN. .035 6061-T6	5199	1
24	65-2933-354	. TUBE ASSY, AIR START 3/4 IN. .035 6061-T6	5199	1
25	65-2933-366	. TUBE ASSY, AIR START 3/4 IN. .035 6061-T6	5199	1
26	65-2933-347	. TUBE ASSY, AIR START 3/4 IN. .035 6061-T6	5199	1
27	65-2933-405	. TUBE ASSY, AIR START 3/4 IN. .035 6061-T6	5199	1
28	65-2933-359	. TUBE ASSY, AIR START 3/4 IN. .035 6061-T6	5199	1
29	65-2933-338	. TUBE ASSY, AIR START 3/4 IN. .035 6061-T6	5199	1
30	65-2933-353	. TUBE ASSY, AIR START 3/4 IN. .035 6061-T6	5199	1
31	65-2933-345	. TUBE ASSY, AIR START 3/4 IN. .035 6061-T6	5199	1
32	65-2933-348	. TUBE ASSY, AIR START 3/4 IN. .035 6061-T6	5199	1
	MS21921-12D	. NUT	5199	2
	BACS13AP12	. SLEEVE	5199	2
33	65-2933-41	. TUBE ASSY, AIR START 3/4 IN. .035 6061-T6	5199	1
34	65-2933-42	. TUBE ASSY, AIR START 3/4 IN. .035 6061-T6	5199	1
	MS21921-12D	. NUT	5199	2
	BACS13AP12	. SLEEVE	5199	2
35	65-2933-334	. TUBE ASSY, COMPRESSOR AIR 3/4 IN. .035 6061-T6	5199	1
	MS21921D12D	. NUT	5199	1
	BACS13AP12	. SLEEVE	5199	1
36	65-2933-417	. TUBE ASSY, HIGH PRESSURE AIR START 1 .058 AISI304	5199	1
37	65-2933-416	. TUBE ASSY, HIGH PRESSURE AIR START 1 .058 AISI304	5199	1
38	65-2933-420	. TUBE ASSY, HIGH PRESSURE AIR START 1 .058 AISI304	5199	1
39	65-2933-419	. TUBE ASSY, HIGH PRESSURE AIR START 1 .058 AISI304	5199	1
	MS20819-16	. SLEEVE	5199	2
40	MS21902D12	. UNION	5199	5
40B	MS21902D12	. UNION	5199	5
41	MS21902-4	. UNION	5199	3
41B	MS21902-4	. UNION	5199	1
42	MS21913D12	. PLUG	5199	1
43	MS21913-4	. PLUG	5199	1
43B	MS21913-4	. PLUG	5199	1
44	872568-01	. VALVE, CHECK (V33525) (OPTIONAL 872568 (V33525))	5199	1
44	872568	. VALVE, CHECK (V33525) (OPTIONAL TO 872568-01 (V33525))	5199	1
45	AN93704	. CROSS	5199	1
46	MS21902-4	. UNION	5199	2

MISSING ITEM NUMBERS ARE NOT APPLICABLE

BOEING *707* Intercontinental   
PARTS CATALOG

FIGURE & ITEM NO.	MANUFACTURER'S PART NUMBER	NOMENCLATURE	EFF	UNITS
			FROM TO	PER ASSY
28 47	BACV10T1	VALVE . . . . .	5199	1
48	69-1800	FITTING, AIR CHARGING VALVE ADAPTER . . . . .	5199	1
49	AN628904	NUT . . . . .	5199	1
49B	AN628904	NUT . . . . .	5199	2
50	MS28778-4	PACKING . . . . .	5199	4
51	MS28777-4	RING . . . . .	5199	1
52	MS20813-1	CAP . . . . .	5199	1
52D	MS21924D12	UNION . . . . .	5199	2
53	MS21924D12	UNION . . . . .	5199	2
53A	AN960PD1716	WASHER . . . . .	5199	2
54	AN960PD1716	WASHER . . . . .	5199	2
54A	AN960PD1716	WASHER . . . . .	5199	1
54B	AN924-12D	NUT . . . . .	5199	2
55	AN924-12D	NUT . . . . .	5199	2
55A	63-9748	NUT, BULKHEAD FITTING FLARED TUBE (ALTERED FROM AN924-4C)	5199	1
56	MS21902-4	UNION . . . . .	5199	2
57	MS28778-4	PACKING . . . . .	5199	2
58	MS21908-4	ELBOW . . . . .	5199	1
58A	MS21908-4	ELBOW . . . . .	5199	1
59	AN960PD1716	WASHER . . . . .	5199	2
60	AN924-4D	NUT . . . . .	5199	1
61	AN937-16	CROSS . . . . .	5199	1
62	AN833-16	ELBOW . . . . .	5199	1
62A	AN833-16	ELBOW, (ADDED BY TWA M.O. 72869)	5199	1
63	AN815-16	UNION . . . . .	5199	1
64	MS28778-16	PACKING . . . . .	5199	4
65	MS28777-16	RING . . . . .	5199	1
66	AN6289-16	NUT . . . . .	5199	1
67	AN832-16	UNION . . . . .	5199	1
68	AN924-16D	NUT . . . . .	5199	1
69	MS21916-16-4	REDUCER . . . . .	5199	1
70	AN834-16	TEE . . . . .	5199	1
70A	MS21909-4	TEE . . . . .	5199	1
71	AN929-16C	CAP ASSY. . . . .	5199	1
72	MS21902-4	UNION . . . . .	5199	2
72A	MS21902-4	UNION . . . . .	5199	1
73	MS21913-4	PLUG . . . . .	5199	1
73A	AN814-4L	PLUG AND BLEEDER . . . . .	5199	1
74	MS28778-4	PACKING . . . . .	5199	4
75	AN937D4	CROSS . . . . .	5199	1
80	2671600-1	VALVE, PRIORITY (V78385) . . . . .	5199	1
82	MS28778-16	PACKING . . . . .	5199	1
82M	65-65022-25	SUPPORT INSTL, AIR START (USED ON 65-2933-407 AND -459)	5199	1
82N	BACC10DK12	CLAMP . . . . .	5199	2
	NAS603-8	ATTACHING PARTS	5199	2
	NAS679A3W	SCREW . . . . .	5199	2
		NUT . . . . .	5199	2
82P	65-65022-29	ANGLE . . . . .	5199	2
82Q	65-65022-30	CLIP . . . . .	5199	2
	NAS1103-2	ATTACHING PARTS	5199	4
	NAS679A3W	BOLT . . . . .	5199	4
		NUT . . . . .	5199	4
83		COMPRESSOR INSTL, ENGINE STARTER AIR (FOR REF SEE FIG. 15 AND 15A)	5199	RF
84		BOTTLE INSTL, ENGINE STARTER AIR (FOR REF SEE FIG. 31)	5199	RF
85		VALVE INSTL, ENGINE START SYSTEM REGULATOR AND SOLENOID (FOR REF SEE FIG. 41)	5199	RF
86		CONNECTION INSTL, AIR STARTER SYSTEM GROUND (FOR REF. SEE FIG. 42)	5199	RF
87		VALVE INSTL, AIR STARTER RELIEF (FOR REF SEE FIG. 46)	5199	RF

MISSING ITEM NUMBERS ARE NOT APPLICABLE

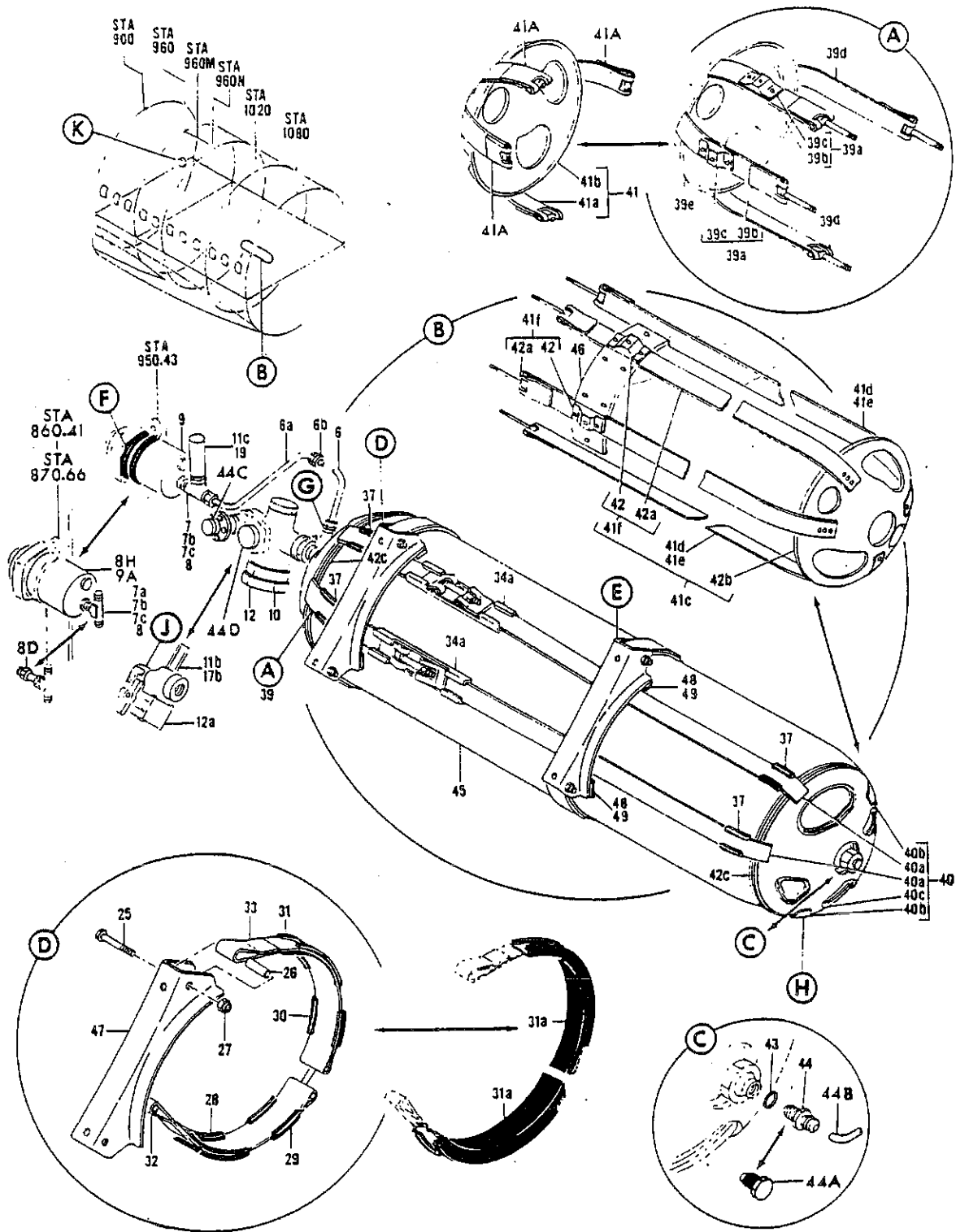


FIGURE 31. BOTTLE INSTL, ENGINE STARTER AIR RH (SHEET 1)

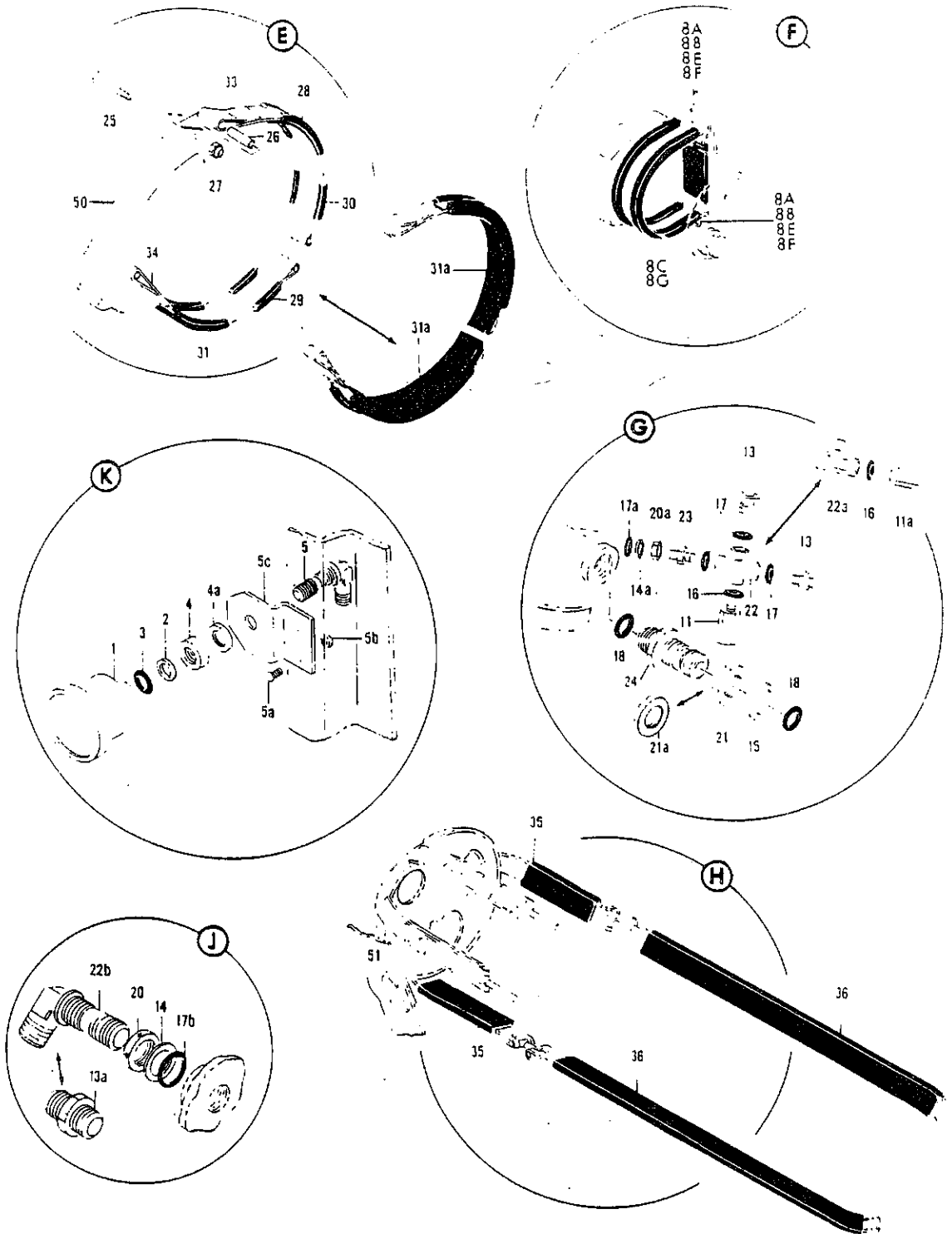


FIGURE 31. BOTTLE INSTL, ENGINE STARTER AIR RH (SHEET 2)

**PARTS CATALOG**

FIGURE & ITEM NO.	MANUFACTURER'S PART NUMBER	1 2 3 4 5 6 7	NOMENCLATURE	EFF FROM TO	UNITS PER ASSY
31	50-6869-60		BOTTLE INSTL, ENGINE STARTER AIR RH (DELETED BY SVA . . . E.O. 81412) (SEE 71-4, FIG. 1, ITEM 4)	5199	RF
1	10-3222-1		. GAGE, PRESSURE DIAL INDICATOR . . . . .	5199	1
2	MS28777-4		. RING . . . . .	5199	1
3	MS28778-4		. PACKING . . . . .	5199	1
4	AN6289-4		. NUT . . . . .	5199	1
4A	63-9748		. NUT, FLARED TUBE BULKHEAD FITTING (ALTERED FROM . . . AN924-4C)	5199	1
5	MS21908-4		. ELBOW . . . . .	5199	1
5A	NAS603-8		. SCREW . . . . .	5199	2
5B	NAS679A3W		. NUT . . . . .	5199	2
5C	63-2827		. BRACKET, STARTER AIR GAUGE . . . . .	5199	1
7A	MS21909-4		. TEE . . . . .	5199	1
7B	MS28777-4		. RING . . . . .	5199	1
7C	MS28778-4		. PACKING . . . . .	5199	1
8	AN6289-4		. NUT . . . . .	5199	1
8A	NAS603-8		. SCREW . . . . .	5199	2
8B	NAS679A3W		. NUT . . . . .	5199	2
8C	BACC10BT40D		. CLAMP . . . . . (OPTIONAL BACC10DG40D)	5199	1
8C	BACC10DG40D		. CLAMP . . . . . (OPTIONAL TO BACC10BT40D)	5199	1
9A	10-3223-2		. TRANSMITTER, HYDRAULIC PRESSURE . . . . .	5199	1
11B	840892-01		. VALVE, PRESSURE RELIEF (V33525) . . . . .	5199	1
12A	3-39274		. VALVE, SHUTOFF (V92003) . . . . .	5199	1
14	MS28777-4		. RING . . . . .	5199	1
15	MS28777-16		. RING . . . . .	5199	1
17B	MS28778-4		. PACKING . . . . .	5199	2
18	MS28778-16		. PACKING . . . . .	5199	2
20	AN6289D4		. NUT . . . . .	5199	1
21	AN6289-16		. NUT . . . . .	5199	1
22B	MS21908-4		. ELBOW . . . . .	5199	1
24	AN832-16C		. UNION . . . . .	5199	1
25	AN4-17A		. BOLT . . . . .	5199	4
26	NAS43HT4-81		. SPACER . . . . .	5199	4
27	NAS679A4W		. NUT . . . . .	5199	4
31A	50-6869-64		. SECTION, ENGINE STARTER AIR BOTTLE RUBBER (EXTRUSION NO. BAC1521-380 X 12.0 IN. LG)	5199	4
32	2432-125-1462		. CLAMP ASSY, (V98625) . . . . .	5199	1
33	2440-125-1369S		. CLAMP ASSY, (V98625) . . . . .	5199	2
34	2432-125-1338		. CLAMP ASSY, (V98625) . . . . .	5199	1
41	65-23781-1		. CAP ASSY, STARTER AIR BOTTLE END SUPPORT . . . . .	5199	1
41A	2400-125-395		. STRAP, (V98625) . . . . .	5199	4
			ATTACHING PARTS		
	BACR15AZ6-2		. RIVET . . . . .	5199	12
	NAS528A6		. COLLAR . . . . .	5199	12
41B	69-9246-2		. CAP, STARTER AIR BOTTLE END SUPPORT . . . . .	5199	1
41C	65-23781-15		. CAP ASSY, STARTER AIR BOTTLE END SUPPORT . . . . .	5199	1
41D	65-23781-11		. STRAP ASSY, STARTER AIR BOTTLE END SUPPORT CAP . . . . .	5199	2
41E	2404-125-4000S		. STRAP, (V98625) . . . . .	5199	1
41F	65-23781-14		. STRAP ASSY, STARTER AIR BOTTLE END SUPPORT CAP . . . . . (USED ON 65-23781-15)	5199	2
			ATTACHING PARTS		
	BACR15AZ6-2		. RIVET . . . . .	5199	12
	NAS528A6		. COLLAR . . . . .	5199	12
42	63-8744		. FITTING, STARTER AIR BOTTLE THRUST . . . . .	5199	1
			ATTACHING PARTS		
	BACR15AZ6-2		. RIVET . . . . .	5199	2
	BACR15AZ6-9		. RIVET . . . . .	5199	1
	NAS528A6		. COLLAR . . . . .	5199	3
42A	2404-125-4000S		. STRAP, (V98625) . . . . .	5199	1
42B	69-9246-2		. CAP, STARTER AIR BOTTLE END SUPPORT . . . . .	5199	1
42C	69-9245		. PAD, STARTER AIR BOTTLE END SUPPORT CAP . . . . .	5199	2
43	MS28778-4		. PACKING . . . . .	5199	1
44A	AN814-4DL		. PLUG . . . . .	5199	1
45	10-3247-3		. BOTTLE, STARTER AIR (USED WITH AN814-4DL AND . . . MS28778-4) (OPTIONAL BAC SPEC NO.; 10-3247-2)	5199	1

MISSING ITEM NUMBERS ARE NOT APPLICABLE



**PARTS CATALOG**

FIGURE & ITEM NO.	MANUFACTURER'S PART NUMBER	NOMENCLATURE	EFF	UNITS
			FROM TO	PER ASSY
31 45	10-3247-2	. BOTTLE, STARTER AIR . . . . . (OPTIONAL TO BAC SPEC NO.; 10-3247-3 WITH AN814-40L AND MS28778-4 AND OPTIONAL BAC SPEC NO.; 10-61753-1 WITH AN814-40L AND MS28778-4)	5199	1
45	10-61753-1	. BOTTLE, STARTER AIR (USED WITH AN814-4DL AND . . . . . MS28778-4)	5199	1
46	65-23781-3	. SHIM ASSY, STARTER AIR BOTTLE END SUPPORT . . . . . ATTACHING PARTS	5199	1
	NAS517-2-3	. SCREW . . . . .	5199	2
	NAS679A08W	. NUT . . . . .	5199	2
	69-9247-16	. BRACKET INSTL, STARTER AIR BOTTLE FORWARD SUPPORT RH	5199	1
47	69-9247-20	. BRACKET ASSY, STARTER AIR BOTTLE FORWARD SUPPORT RH	5199	1
48	50-6869-75	. SHIM, ENGINE STARTER AIR BOTTLE . . . . .	5199	AR
49	50-6869-76	. SHIM, ENGINE STARTER AIR BOTTLE . . . . .	5199	AR
	69-9248-16	. BRACKET INSTL, STARTER AIR BOTTLE AFT SUPPORT RH. . . . .	5199	1
50	69-9248-22	. BRACKET ASSY, STARTER AIR BOTTLE AFT SUPPORT RH . . . . .	5199	1

MISSING ITEM NUMBERS ARE NOT APPLICABLE

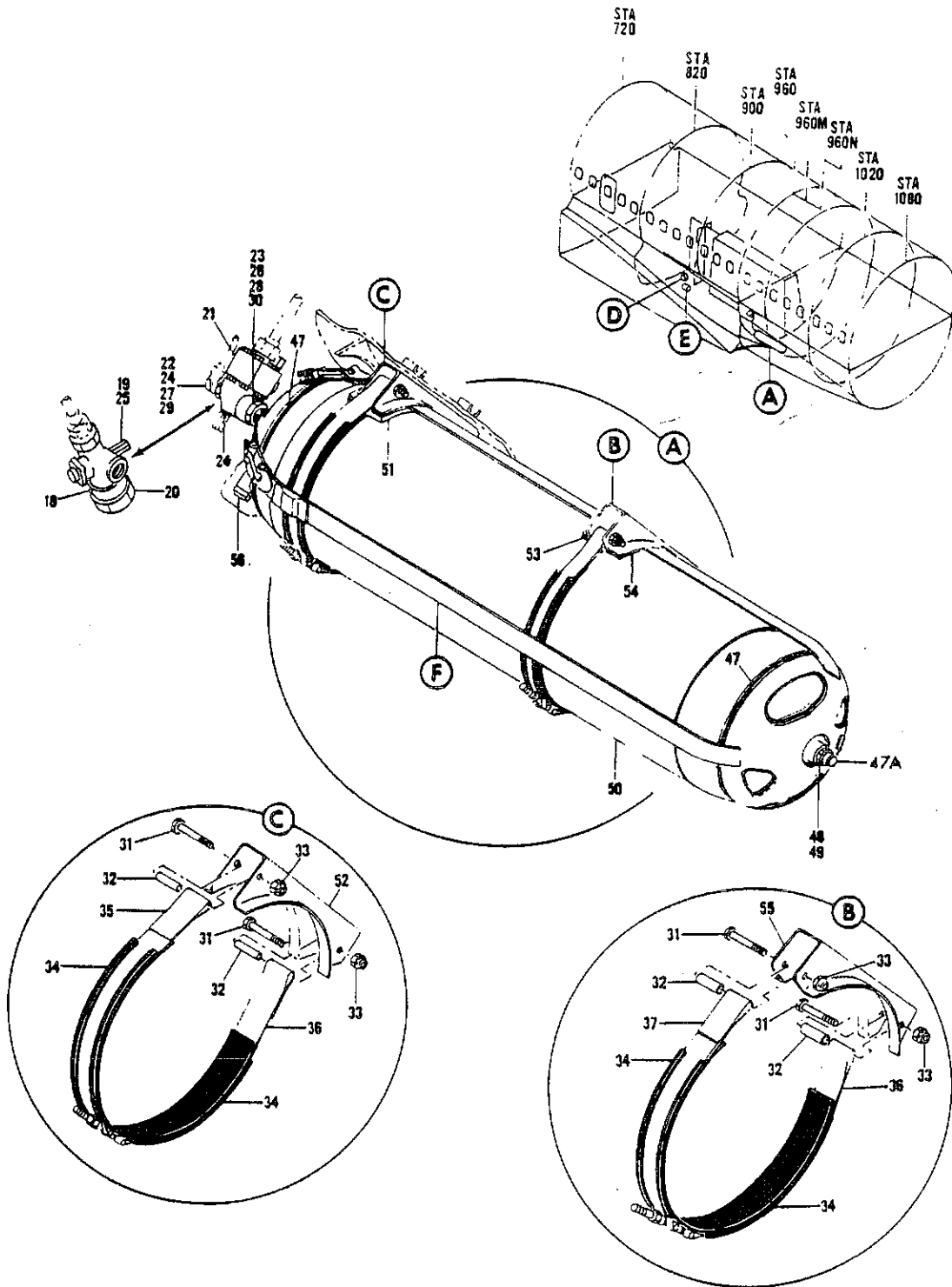


FIGURE 33. BOTTLE INSTL, ENGINE STARTER AIR (SHEET 1)

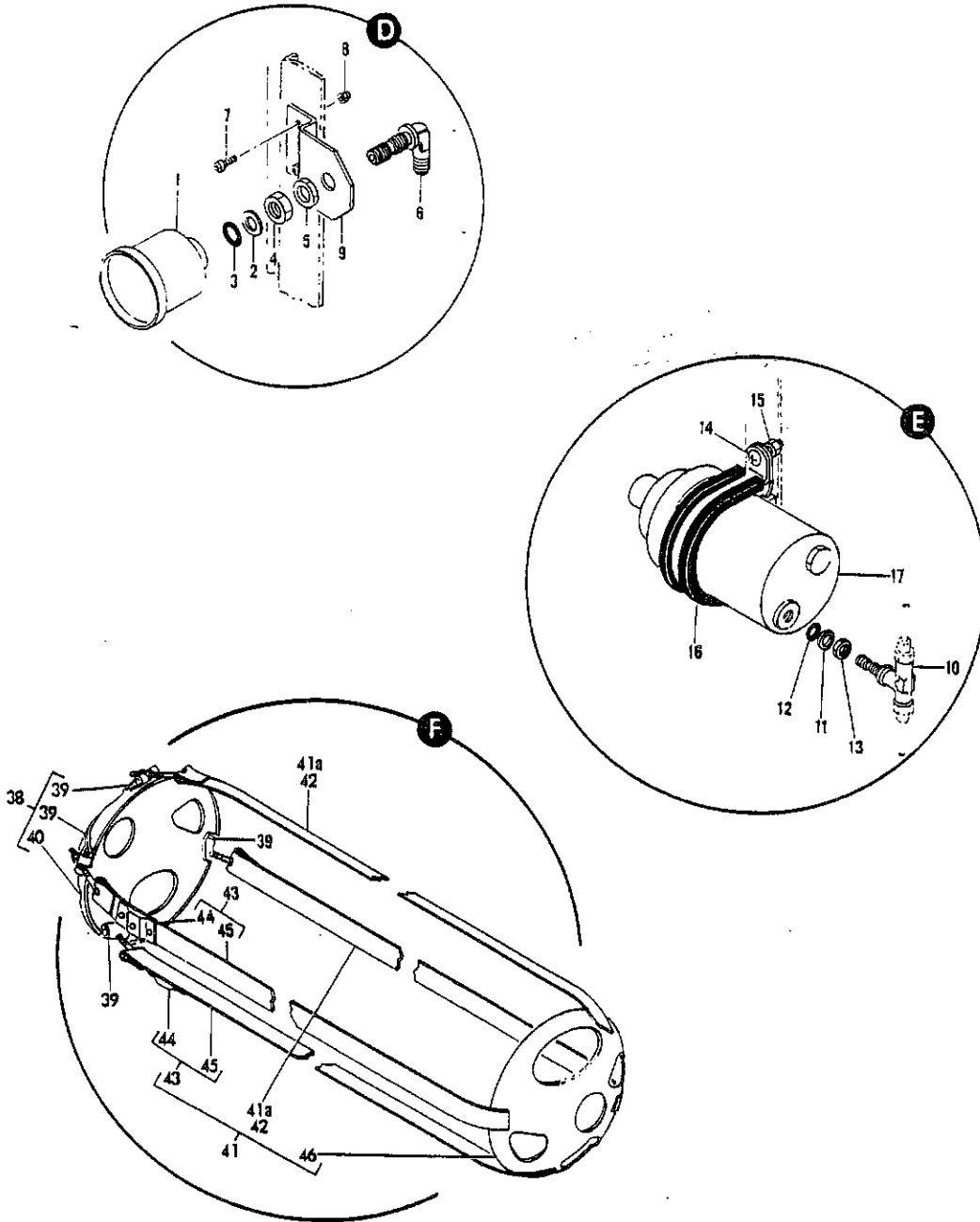


FIGURE 33. BOTTLE INSTL, ENGINE STARTER AIR (SHEET 2)



**PARTS CATALOG**

FIGURE & ITEM NO.	MANUFACTURER'S PART NUMBER	1 2 3 4 5 6 7	NOMENCLATURE	EFF	UNITS
				FROM TO	PER ASSY
33	50-6869-72		BOTTLE INSTL, ENGINE STARTER AIR LH (DELETED BY SVA . . . E.O. 81412) (SEE 71-4, FIG. 1, ITEM 3)	5199	RF
1	10-3222-1		. GAGE, DIAL INDICATOR PRESSURE . . . . .	5199	1
2	MS28777-4		. RING . . . . .	5199	1
3	MS28778-4		. PACKING . . . . .	5199	1
4	AN6289-4		. NUT . . . . .	5199	1
5	63-9748		. NUT, FLARED TUBE BULKHEAD FITTING (ALTERED FROM . . . AN924-4C)	5199	1
6	MS21908-4		. ELBOW . . . . .	5199	1
7	NAS603-8		. SCREW . . . . .	5199	2
8	NAS679A3W		. NUT . . . . .	5199	2
9	63-2827-1		. BRACKET, GAGE . . . . .	5199	1
10	MS21909-4		. TEE . . . . .	5199	1
11	MS28777-4		. RING . . . . .	5199	1
12	MS28778-4		. PACKING . . . . .	5199	1
13	AN6289-4		. NUT . . . . .	5199	1
14	NAS603-8		. SCREW . . . . .	5199	1
15	NAS679A3W		. NUT . . . . .	5199	1
16	BACC10BT40D		. CLAMP . . . . . (OPTIONAL BACC10DG40D)	5199	1
16	BACC10DG40D		. CLAMP . . . . . (OPTIONAL TO BACC10BT40D)	5199	1
17	10-3223-2		. TRANSMITTER, HYDRAULIC PRESSURE . . . . .	5199	1
18	107892-2		. HEATER, (V99193) . . . . . (OPTIONAL 107892-3 (V99193))	5199	1
18	107892-3		. HEATER, (V99193) . . . . . (OPTIONAL TO 107892-2 (V99193))	5199	1
19	840892-01		. VALVE, PRESSURE RELIEF (V33525) . . . . .	5199	1
20	10-3358		. VALVE ASSY, 3400 TO 750 PSI PRESSURE REGULATING AND . . . SHUTOFF	5199	1
20	10-3358-1		. VALVE ASSY, 3400 TO 750 PSI PRESSURE REGULATING AND . . . SHUTOFF (WITH AN814-4DL AND 5140-534001-4 (V45681)) (OPTIONAL TO BAC SPEC NO. 10-3358)	5199	1
	AN814-4DL		. PLUG (USED WITH 10-3358 OR 10-3358-1 VALVE ASSY) . . . . .	5199	1
	5140-534001-4		. RING (USED WITH 10-3358 OR 10-3358-1 VALVE ASSY) . . . . .	5199	1
23	MS28777-16		. RING . . . . .	5199	1
24	MS28778-4		. PACKING . . . . .	5199	2
25	MS28778-4		. PACKING . . . . .	5199	1
26	MS28778-16		. PACKING . . . . .	5199	2
28	AN6289-16		. NUT . . . . .	5199	1
30	AN832-16C		. UNION . . . . .	5199	1
31	AN4-17A		. BOLT . . . . .	5199	4
32	NAS43HT4-81		. SPACER . . . . .	5199	4
33	NAS679A4W		. NUT . . . . .	5199	4
34	50-6869-64		. SECTION, ENGINE STARTER AIR BOTTLE RUBBER (EXTRUSION NO. BAC1521-380 X 12.0 IN. LG)	5199	4
35	2432-125-1462		. CLAMP ASSY, (V98625) . . . . .	5199	1
36	2440-125-1369S		. CLAMP ASSY, (V98625) . . . . .	5199	2
37	2432-125-1338		. CLAMP ASSY, (V98625) . . . . .	5199	1
38	65-23781-1		. CAP ASSY, STARTER AIR BOTTLE END SUPPORT . . . . .	5199	1
39	2400-125-395		. STRAP, (V98625) . . . . . ATTACHING PARTS	5199	4
	BACR15AZ6-2		. RIVET . . . . .	5199	12
	NAS528A6		. COLLAR . . . . .	5199	12
40	69-9246-2		. CAP, STARTER AIR BOTTLE END SUPPORT . . . . .	5199	1
41	65-23781-15		. CAP ASSY, STARTER AIR BOTTLE END SUPPORT . . . . .	5199	1
41A	65-23781-11		. STRAP ASSY . . . . .	5199	2
42	2404-125-4000S		. STRAP, (V98625) . . . . .	5199	1
43	65-23781-14		. STRAP ASSY . . . . . ATTACHING PARTS	5199	2
	BACR15AZ6-2		. RIVET . . . . .	5199	12
	NAS528A6		. COLLAR . . . . .	5199	12
44	63-8744		. FITTING, THRUST . . . . . ATTACHING PARTS	5199	1
	BACR15AZ6-2		. RIVET . . . . .	5199	2
	BACR15AZ6-9		. RIVET . . . . .	5199	1
	NAS528A6		. COLLAR . . . . .	5199	3
45	2404-125-4000S		. STRAP, (V98625) . . . . .	5199	1
46	69-9246-2		. CAP . . . . .	5199	1

MISSING ITEM NUMBERS ARE NOT APPLICABLE



**PARTS CATALOG**

FIGURE & ITEM NO.	MANUFACTURER'S PART NUMBER	NOMENCLATURE	EFF FROM TO	UNITS PER ASSY
33 47	69-9245	. PAD, STARTER AIR BOTTLE END SUPPORT CAP . . . . .	5199	2
47A	AN814-4	. PLUG . . . . .	5199	1
48	MS21902D4	. UNION . . . . .	5199	1
49	MS28778-4	. PACKING . . . . .	5199	1
50	10-3247-3	. BOTTLE, STARTER AIR . . . . .	5199	1
		(OPTIONAL TO BAC SPEC NO. 10-61753-1)		
50	10-61753-1	. BOTTLE, STARTER AIR . . . . .	5199	1
		(OPTIONAL BAC SPEC NO. 10-3247-3)		
51	65-23781-3	. SHIM ASSY, STARTER AIR BOTTLE END SUPPORT . . . . .	5199	1
		ATTACHING PARTS		
	NAS517-2-3	. SCREW . . . . .	5199	2
	NAS679A08W	. NUT . . . . .	5199	2
		-----*		
	69-9247-15	. BRACKET INSTL, STARTER AIR BOTTLE FORWARD SUPPORT . . . . .	5199	1
52	69-9247-19	. . BRACKET ASSY, STARTER AIR BOTTLE FORWARD SUPPORT . . . . .	5199	1
53	50-6869-75	. SHIM, ENGINE STARTER AIR BOTTLE . . . . .	5199	AR
54	50-6869-76	. SHIM, ENGINE STARTER AIR BOTTLE . . . . .	5199	AR
	69-9248-15	. BRACKET INSTL, STARTER AIR BOTTLE AFT SUPPORT . . . . .	5199	1
55	69-9248-21	. . BRACKET ASSY, STARTER AIR BOTTLE AFT SUPPORT . . . . .	5199	1
56	10S1034	. FILTER, RADIO NOISE (V56289) . . . . .	5199	1
		(OPTIONAL 10S1034A (V56289))		
56	10S1034A	. FILTER, RADIO NOISE (V56289) . . . . .	5199	1
		(OPTIONAL TO 10S1034 (V56289))		

MISSING ITEM NUMBERS ARE NOT APPLICABLE

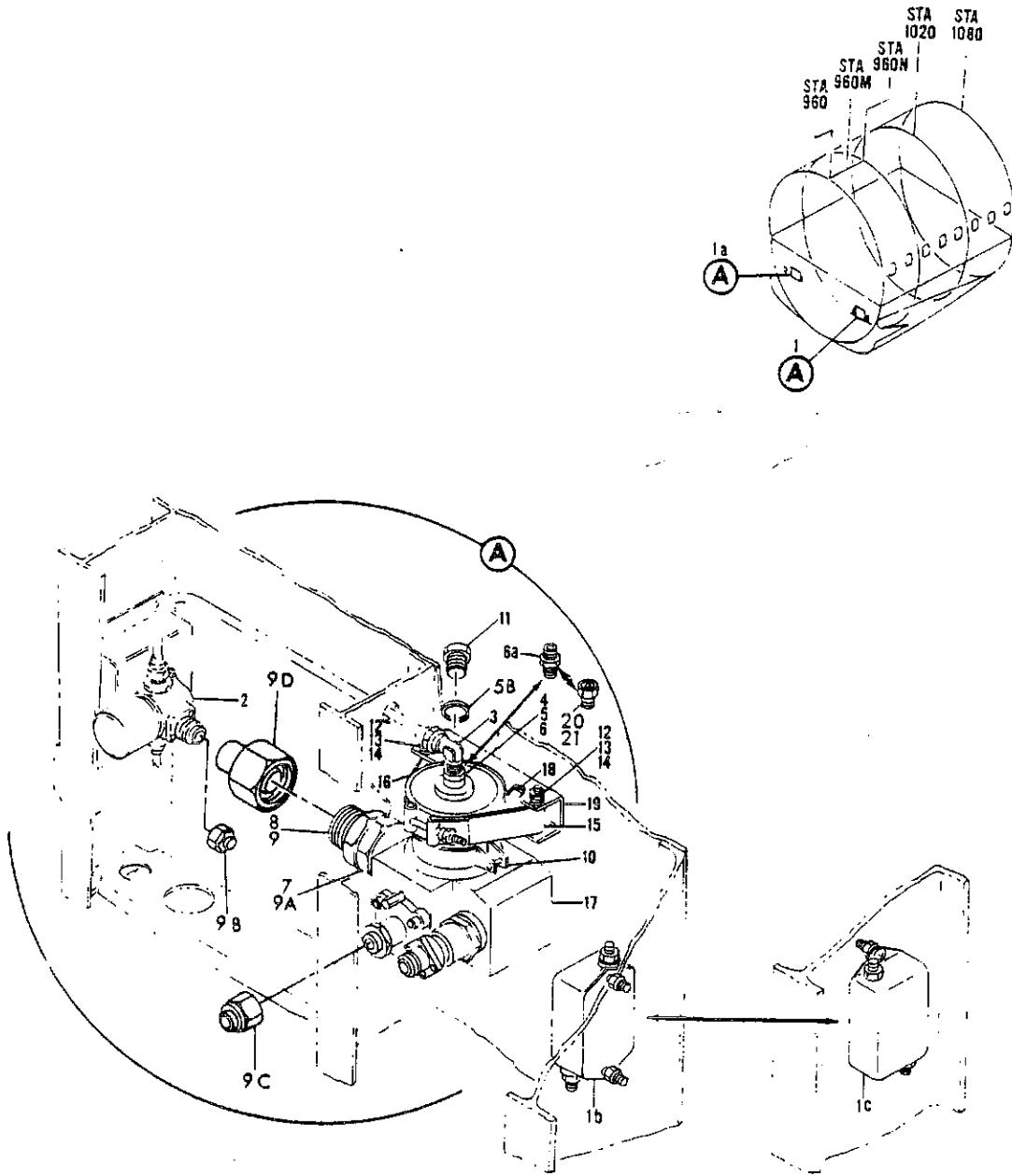


FIGURE 41. VALVE INSTL., ENGINE START SYSTEM REGULATORS AND SOLENOID (STARTING ONLY)



**PARTS CATALOG**

FIGURE & ITEM NO.	MANUFACTURER'S PART NUMBER	NOMENCLATURE							EFF FROM TO	UNITS PER ASSY	
		1	2	3	4	5	6	7			
41	1A	65-18985-1	VALVE INSTL, ENGINE START SYSTEM REGULATOR AND SOLENOID (STARTING ONLY) (SEE 71-4, FIG. 1, ITEM 7)							5199	RF
	1B	10S1034	. FILTER, RADIO NOISE (V56289) (USED ON 65-18985-1, -2) (OPTIONAL 10S1034A (V56289))							5199	1
	1B	10S1034A	. FILTER, RADIO NOISE (V56289) (USED ON 65-18985-1, -2) (OPTIONAL TO 10S1034 (V56289))							5199	1
			ATTACHING PARTS								
		NAS602-7	. SCREW . . . . .							5199	2
		AN960PD8L	. WASHER . . . . .							5199	2
		NAS679A08W	. NUT . . . . .							5199	2
			-----*								
	2	206013	. VALVE, 0 TO 3000 PSI MAGNETIC SHUTOFF (V99657) . . . . .							5199	1
			ATTACHING PARTS								
		NAS1103-13W	. BOLT . . . . .							5199	2
		NAS43DD3-34	. SPACER . . . . .							5199	2
			-----*								
	5B	MS28778-4	. PACKING . . . . .							5199	1
	6	MS28778-4	. PACKING . . . . .							5199	1
	6A	MS21902-4	. UNION . . . . .							5199	1
	7	AN924-16D	. NUT . . . . .							5199	1
	8	AN832-16	. UNION . . . . .							5199	1
	9	MS28778-16	. PACKING . . . . .							5199	1
10	107892-2	. HEATER, (V99193) . . . . .							5199	1	
10	107892-3	. HEATER, (V99193) . . . . . (OPTIONAL 107892-3 (V99193))							5199	1	
11	BACP20AU4	. PLUG . . . . .							5199	1	
12	AN3-15A	. BOLT, (USED ON 65-28435-1, -2, 65-18985-1) . . . . .							5199	2	
13	AN960PD10	. WASHER . . . . .							5199	2	
14	NAS679A3W	. NUT, (USED ON 65-28435-1, -2, 65-18985-1) . . . . .							5199	2	
15	Z330-100-350	. CLAMP ASSY, TRUNNION (V98625) . . . . .							5199	1	
16	Z334-100-350SH	. CLAMP ASSY, T BOLT (V98625) . . . . .							5199	1	
17	10-3358-1	. VALVE ASSY, 3400 PSI TO 750 PSI PRESSURE REGULATING AND SHUTOFF							5199	1	
18	69-16777-2	. BLOCK, STARTER AIR REGULATOR VALVE SUPPORT PHENOLIC . . . . . (USED ON 65-18985-1)							5199	1	
		ATTACHING PARTS									
	NAS517-3-16	. SCREW, (USED ON 65-28435-1, -2, 65-18985-1) . . . . .							5199	2	
	AN960PD10	. WASHER . . . . .							5199	2	
	NAS679A3W	. NUT . . . . .							5199	2	
		-----*									
19	69-16777-1	. CHANNEL, STARTER AIR REGULATOR VALVE SUPPORT (USED ON 65-18985-1)							5199	1	
		. FOR REFERENCE TO OTHER VALVE DETAILS, SEE NHA . . . . .							5199		

MISSING ITEM NUMBERS ARE NOT APPLICABLE

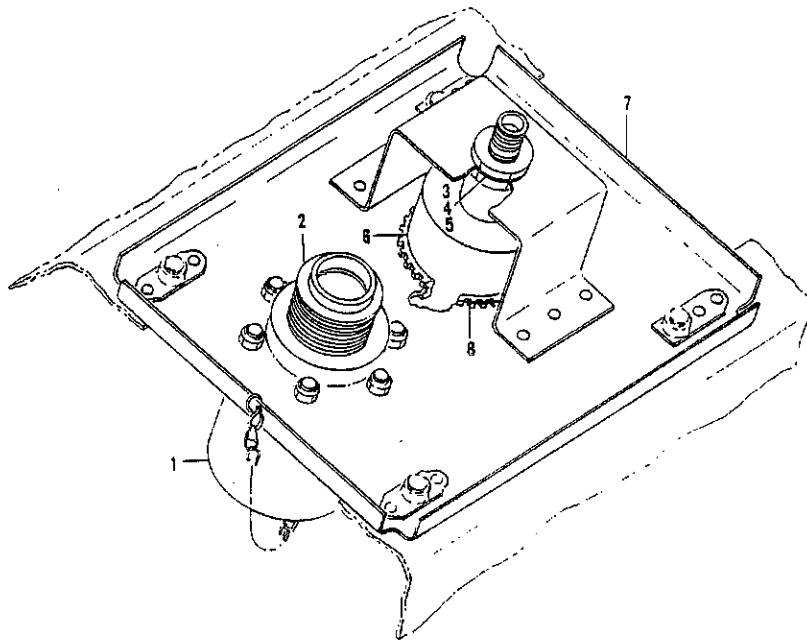
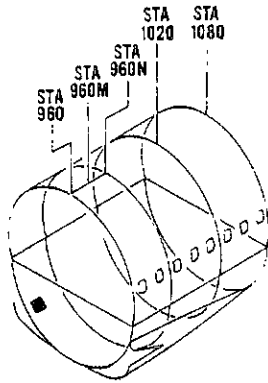


FIGURE 42. CONNECTION INSTL, AIR STARTER SYSTEM GROUND



**PARTS CATALOG**

FIGURE & ITEM NO.	MANUFACTURER'S PART NUMBER	NOMENCLATURE							EFF FROM TO	UNITS PER ASSY
		1	2	3	4	5	6	7		
42	65-55002-1	CONNECTION INSTL, AIR STARTER SYSTEM GROUND (SEE 71-4, FIG. 1, ITEM 11 AND 71-4, FIG. 2, ITEM 10)							5199	RF
1	015595S7-16D	. CAP, QUICK DISCONNECT (V70128) . . . . .							5199	1
2	15554-16	. COUPLING, QUICK DISCONNECT (V00624) . . . . .							5199	1
		ATTACHING PARTS								
	NAS603-6	. SCREW . . . . .							5199	6
	NAS679A3W	. NUT . . . . .							5199	6
7	69-35069-11	. BRACKET ASSY, AIR STARTER SYSTEM GROUND CONNECTION. .							5199	1
		ATTACHING PARTS								
	NAS604-8	. SCREW . . . . .							5199	4
	AN960PD416L	. WASHER. . . . .							5199	4
8	BACG20ZA667	. GROMMET . . . . .							5199	1

MISSING ITEM NUMBERS ARE NOT APPLICABLE

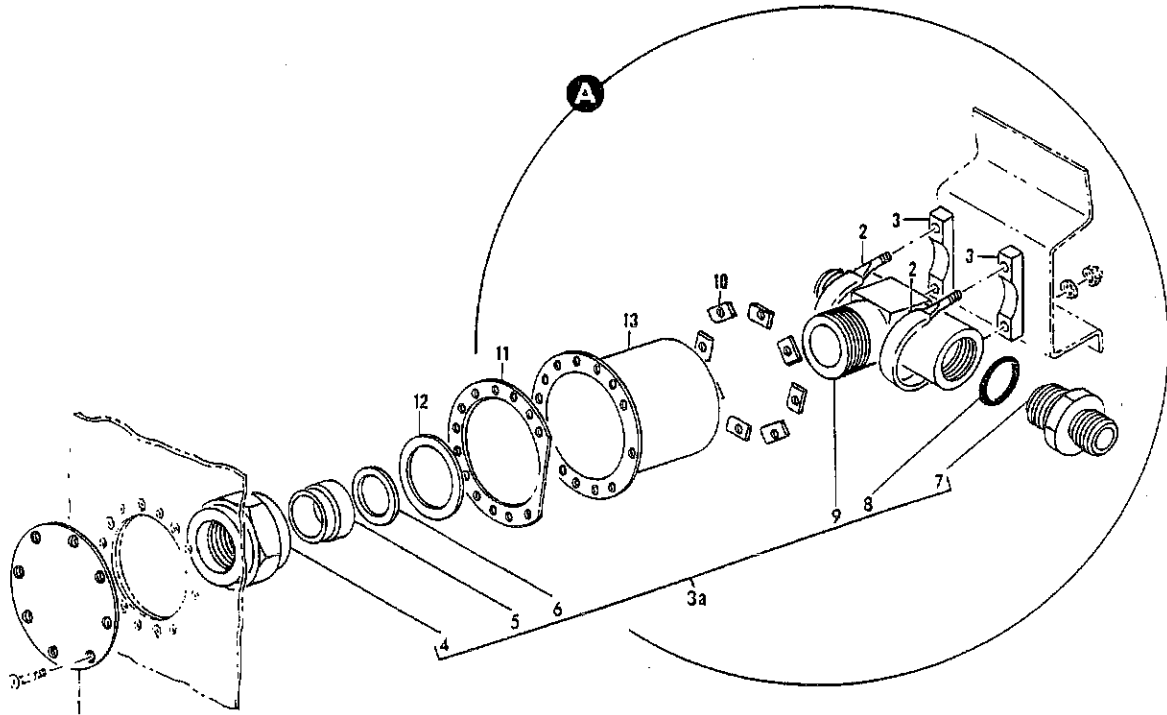
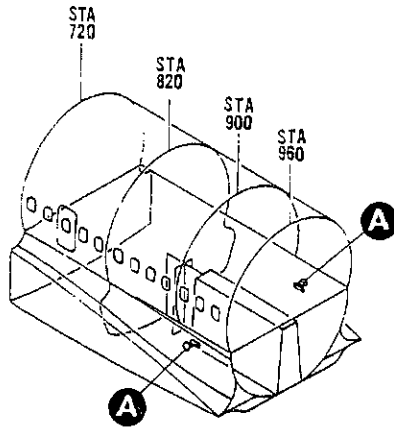


FIGURE 46. VALVE INSTL. AIR STARTER RELIEF  
PROVISIONS INSTL. AIR STARTER RELIEF VALVE



**PARTS CATALOG**

FIGURE & ITEM NO.	MANUFACTURER'S PART NUMBER	1 2 3 4 5 6 7	NOMENCLATURE	EFF	UNITS
				FROM TO	PER ASSY
46	65-21909-1		VALVE INSTL, AIR STARTER RELIEF (LH) (SEE 71-4, FIG. 1, ITEM 8)	5199	RF
1	65-72058-5		. PATCH, AIR STARTER RELIEF VALVE . . . . .	5199	1
	NAS514P632-10		. ATTACHING PARTS . SCREW . . . . .	5199	8
2	BACC10Y32P10		. CLAMP, (USED ON 65-21909-1 AND -2) . . . . .	5199	2
	NAS679A3W		. ATTACHING PARTS . NUT . . . . .	5199	4
	AN960PD10		. WASHER. . . . .	5199	4
3	65-72058-8		. BLOCK, AIR STARTER RELIEF VALVE STRAP (USED ON . . . . .	5199	2
3A	69-47091		. VALVE ASSY, STARTER SYSTEM RELIEF (USED ON 65-21909-1 AND -2)	5199	1
4	AN818-24D		. NUT . . . . .	5199	1
5	69-47091-3		. CAP, STARTER SYSTEM RELIEF VALVE RETAINER . . . . .	5199	1
6	77BQE002		. DISC, RUPTURE (V07477). . . . .	5199	1
7	MS21916D16-12		. REDUCER . . . . .	5199	1
8	AN6290-16		. PACKING . . . . .	5199	1
9	69-47091-2		. TEE, STARTER SYSTEM RELIEF VALVE. . . . .	5199	1
10	65-72058-6		. FILLER, AIR STARTER RELIEF VALVE. . . . .	5199	8
	BACR15CED3		. ATTACHING PARTS . RIVET . . . . .	5199	6
11	65-21909-4		. FILLER, AIR STARTER RELIEF VALVE. . . . .	5199	1
12	69-48025-2		. SEAL, STARTER RELIEF VALVE. . . . .	5199	1
13	69-15922-1		. PAN, STARTER RELIEF VALVE SEAL. . . . .	5199	1

MISSING ITEM NUMBERS ARE NOT APPLICABLE

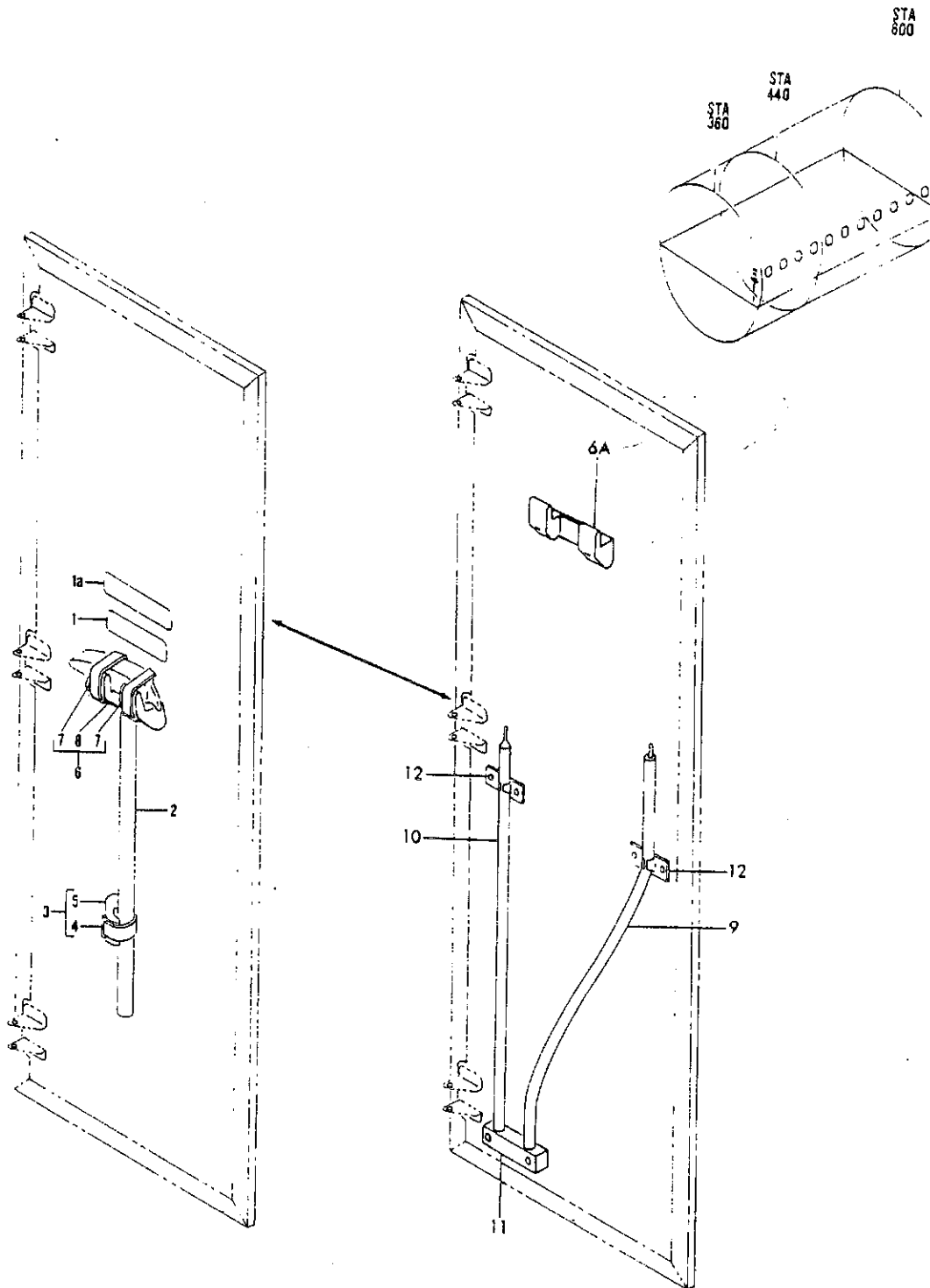


FIGURE 48. STOWAGE INSTL, STARTER VALVE OVERRIDE TOOL



**PARTS CATALOG**

FIGURE & ITEM NO.	MANUFACTURER'S PART NUMBER	NOMENCLATURE							EFF FROM TO	UNITS PER ASSY
		1	2	3	4	5	6	7		
48	69-25973-1	STOWAGE INSTL, STARTER VALVE OVERRIDE TOOL (SEE 24-13, FIG. 102, ITEM 100)								RF
1	BACM9V1BH	. SCOTCH-CAL, STARTER VALVE OVERRIDE TOOL . . . . .								1
2	69-25959-1	. TOOL ASSY, MANUAL OPERATING . . . . .								1
3	66-3218	. BRACKET ASSY, LANDING GEAR CRANK STRAP. . . . .								1
		ATTACHING PARTS								
	NAS603-14P	. SCREW . . . . .								2
	AN960-10L	. WASHER. . . . .								4
	BACN10JC3	. NUT . . . . .								2
		-----*								
4	BACS38A27A8	. . STRAP ASSY. . . . .								1
5	66-3218-1	. . BRACKET, LANDING GEAR CRANK STRAP . . . . .								1
6	66-19225-1	. BRACKET ASSY. . . . .								1
		ATTACHING PARTS								
	NAS603-14P	. SCREW . . . . .								2
	AN960-10L	. WASHER. . . . .								4
	BACN10JC3	. NUT . . . . .								2
		-----*								
7	BACS38A27A9	. . STRAP ASSY. . . . .								2
		(OPTIONALS BACS38A27A7-8, BACS38A27A8-5)								
7	BACS38A27A7-8	. . STRAP ASSY. . . . .								2
		(OPTIONAL TO BACS38A27A9)								
7	BACS38A27A8-5	. . STRAP ASSY. . . . .								2
		(OPTIONAL TO BACS38A27A9)								
8	69-26211-1	. . BRACKET, STARTER VALVE OVERRIDE TOOL. . . . .								1

MISSING ITEM NUMBERS ARE NOT APPLICABLE

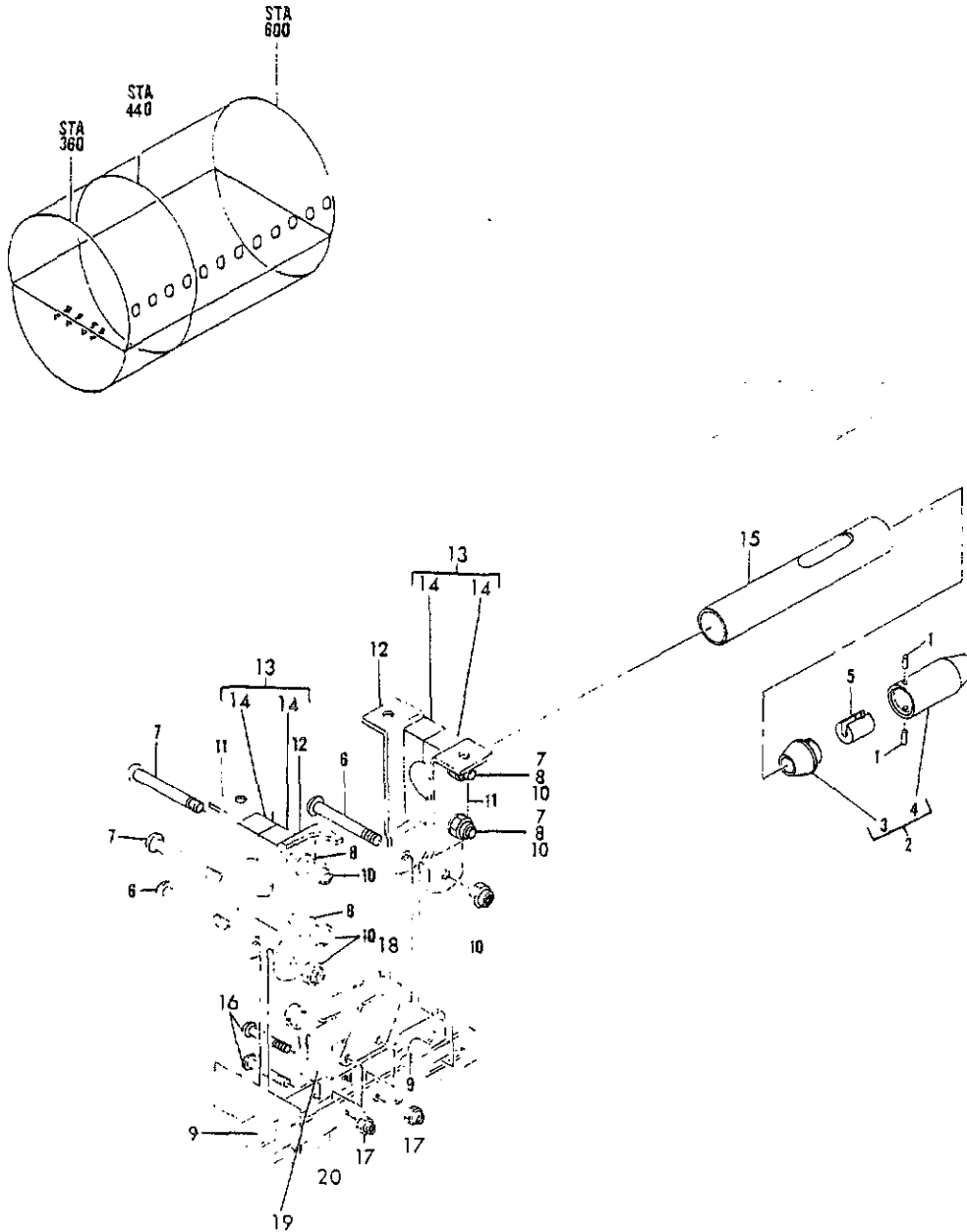


FIGURE 52. BRACKET ASSY, STATION 360 TO 380 THROTTLE OPERATED SWITCH



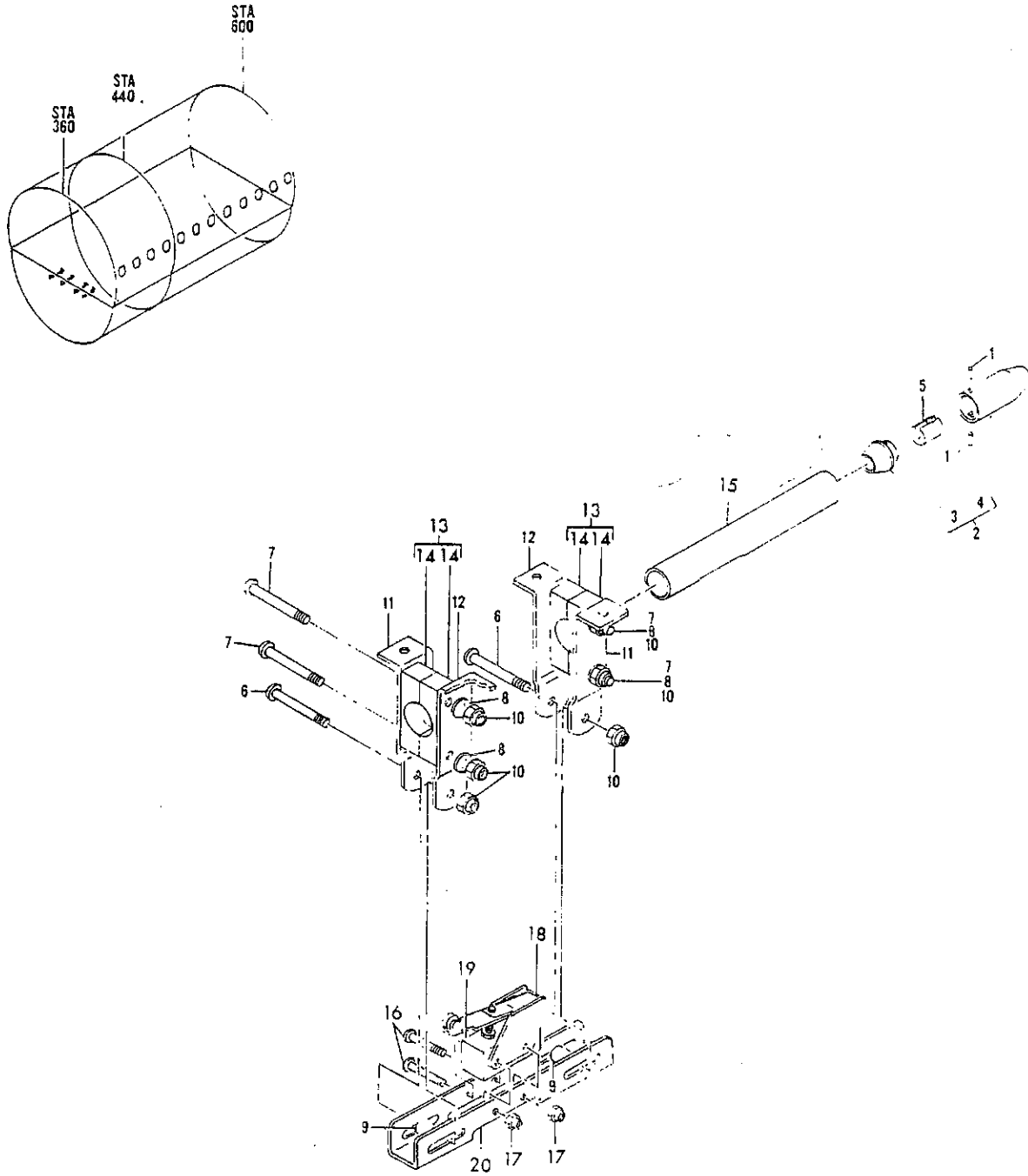


FIGURE 54. SWITCH ASSY, STATION 360 TO 380 THROTTLE OPERATED

DETAILED PARTS LIST  
 90-01-54  
 PAGE 0

80-01-54

NOV 21/90



**PARTS CATALOG**

FIGURE & ITEM NO.	MANUFACTURER'S PART NUMBER	1 2 3 4 5 6 7	NOMENCLATURE	EFF	UNITS
				FROM TO	PER ASSY
R 54	65-45307-4		SWITCH ASSY, STATION 360 TO 380 THROTTLE OPERATED (SEE 32-10, FIG. 10, ITEM 1)	0150	RF
R 1	MS16562-6		. PIN . . . . .	0150	2
R 2	66-1823-3		. CAM ASSY, ENGINE START ACTUATING (DELETED BY SB 2875)	0150	1
R 2	66-1823-10		. CAM ASSY, ENGINE START ACTUATING (ADDED BY SB 2875)	0150	1
R 3	66-1823-4		. . CAM, (MATCHED PART, ORDER ASSEMBLY ONLY)	0150	1
R 4	66-1823-5		. . CAM, (MATCHED PART, ORDER ASSEMBLY ONLY) (DELETED BY SB 2875)	0150	1
R 4	66-1823-11		. . CAM, (MATCHED PART, ORDER ASSEMBLY ONLY) (ADDED BY SB 2875)	0150	1
R 5	3-87757-3000		. CYLINDER, ACTUATING CAM CABLE . . . . .	0150	1
R 6	NAS221-22		. SCREW . . . . .	0150	2
R 7	NAS221-30		. SCREW . . . . .	0150	4
R 8	AN960D10L		. WASHER . . . . .	0150	4
R 9	NAS42DD6-49		. SPACER . . . . .	0150	2
R 10	NAS679A3W		. NUT . . . . .	0150	6
R 11	5-95677-27		. BRACKET, STATION 259.5 TO 277.0 . . . . .	0150	2
R 12	5-95677-28		. BRACKET, STATION 259.5 TO 277.0 . . . . .	0150	2
R 13	3-88411		. CLAMP ASSY, CAM GUIDE TUBE . . . . .	0150	2
R 14	3-88411-1		. . CLAMP, (MATCHED PART, ORDER ASSEMBLY ONLY)	0150	2
R 15	66-1807-1		. TUBE, ENGINE START CAM GUIDE . . . . .	0150	1
R 16	NAS601-20		. SCREW . . . . .	0150	2
R 17	NAS679A06W		. NUT . . . . .	0150	2
R 18	ADD3721R		. ACTUATOR, (V91929) . . . . .	0150	1
R 19	DT2RA7		. SWITCH, (V91929) . . . . .	0150	1
R 20	5-95677-24		. CHANNEL, STATION 259.5 TO 277.0 . . . . .	0150	1

MISSING ITEM NUMBERS ARE NOT APPLICABLE

**BOEING**  
*Intercontinental*  
**707**   
**PARTS CATALOG**

**SECTION 02**  
**INSTRUMENT PANELS**

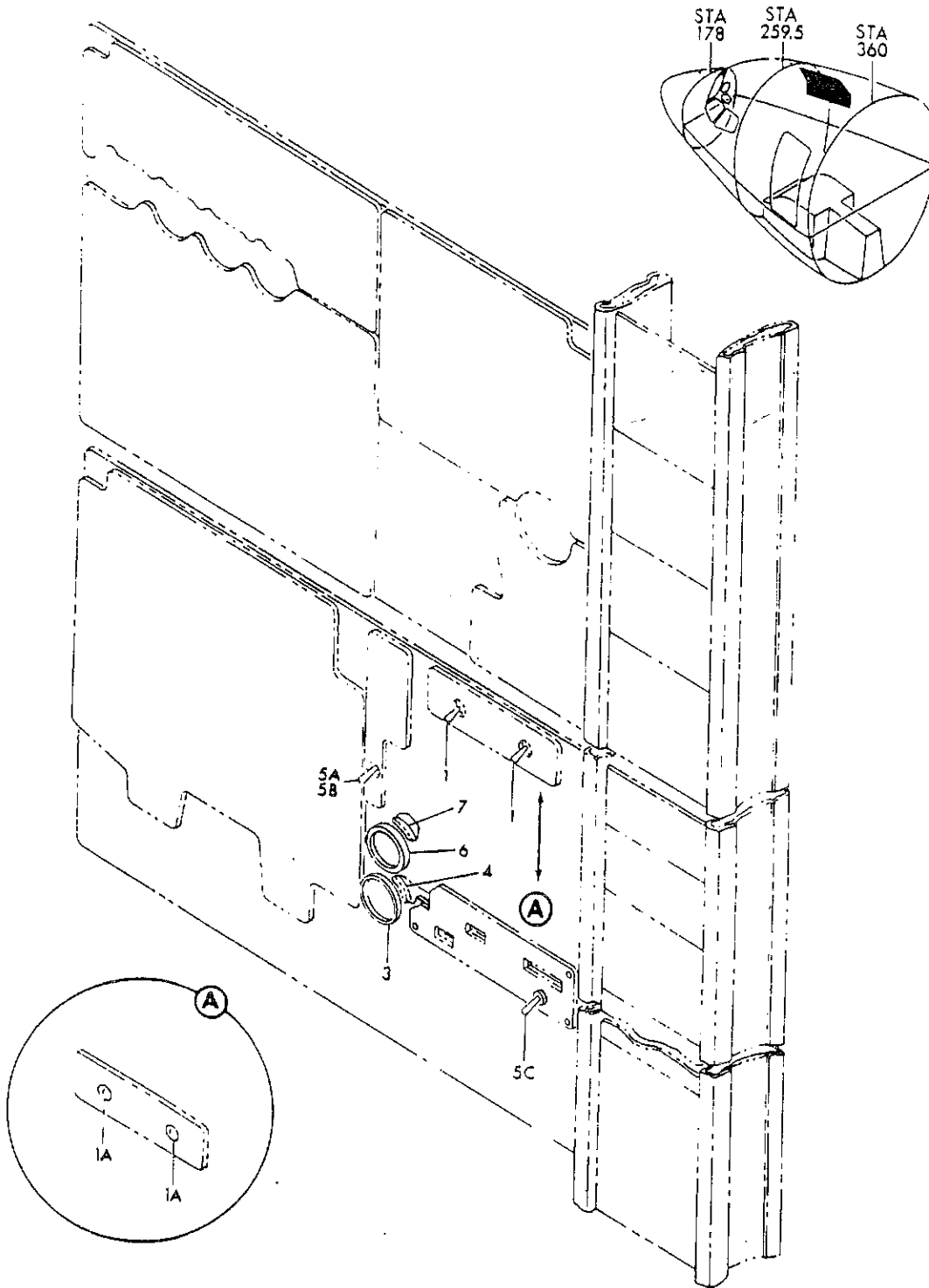


FIGURE 6K. PANEL INSTL, FLIGHT ENGINEERS LOWER (STARTING ONLY)

DETAILED PARTS LIST  
 80-02-6K  
 PAGE 0

80-02-6K

NOV 21/90



**PARTS CATALOG**

FIGURE & ITEM NO.	MANUFACTURER'S PART NUMBER	NOMENCLATURE							EFF FROM TO	UNITS PER ASSY
		1	2	3	4	5	6	7		
6K	65-58956-1	PANEL INSTL, FLIGHT ENGINEERS LOWER (STARTING ONLY) . . .							5199	RF
		(SEE 25-1, FIG. 1B, ITEM 8, 25-1, FIG. 1E, ITEM 8, 25-1, FIG. 1F, ITEM 6, 25-1, FIG. 2D, ITEM 6 AND 25-1, FIG. 2E, ITEM 83)								
3	65-58956-88	. UNIT ASSY, (STARTING ONLY). . . . .							5199	RF
4	BACC10EL3	. . CLAMP . . . . .							5199	1
	SRDL9A	. . INDICATOR, ENGINE START AIR PRESSURE (V61349) . . .							5199	1
		. FOR REFERENCE TO OTHER PANEL DETAILS, SEE NHA . . . .							5199	
MISSING ITEM NUMBERS ARE NOT APPLICABLE										

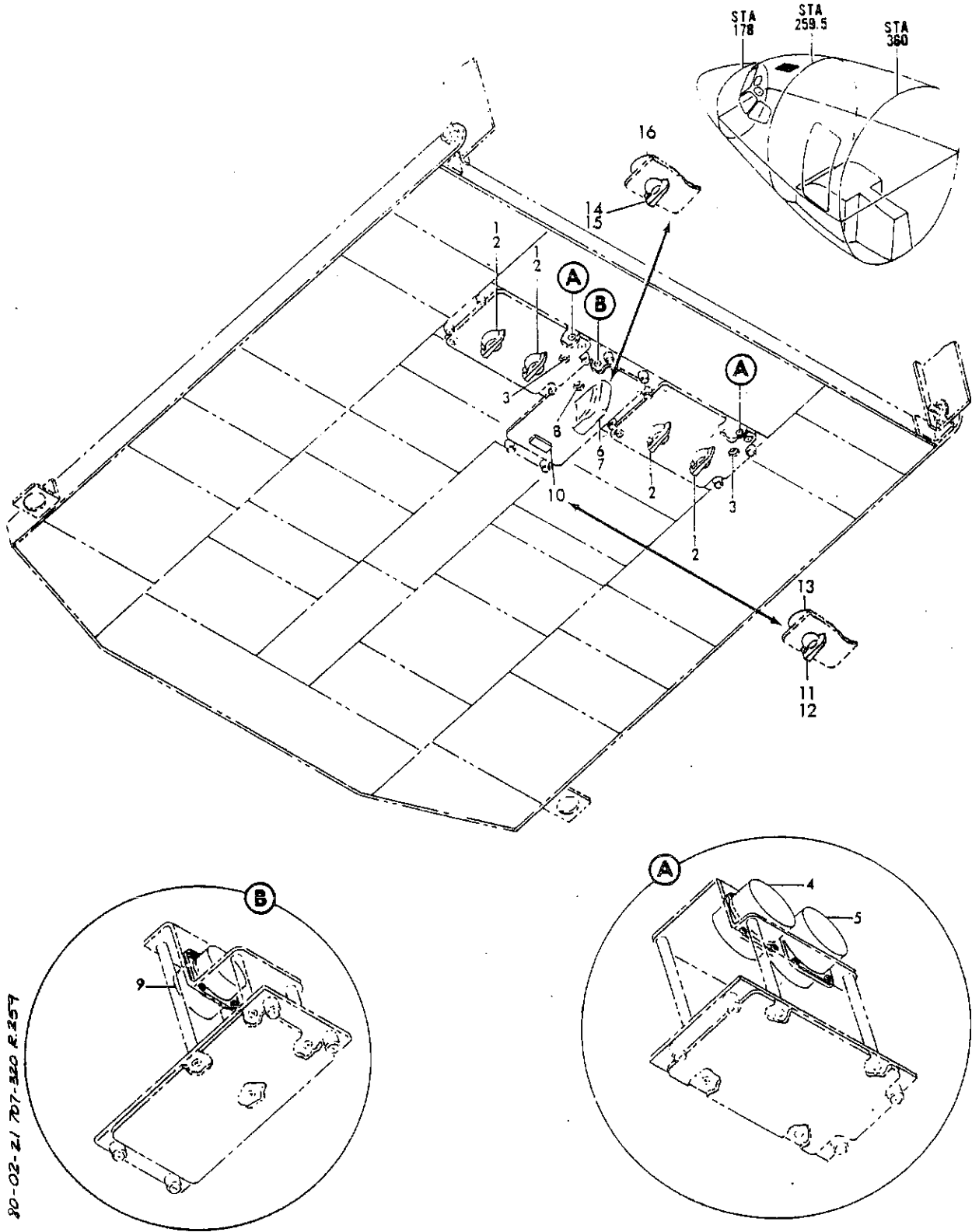


FIGURE 21. MODULE INSTL, P13 PILOTS OVERHEAD (STARTING ONLY)



**PARTS CATALOG**

FIGURE & ITEM NO.	MANUFACTURER'S PART NUMBER	NOMENCLATURE							EFF FROM TO	UNITS PER ASSY
		1	2	3	4	5	6	7		
21	65-86177-2	MODULE INSTL, P13 PILOTS OVERHEAD (VARIABLE . . . . .							5199	RF
		DWG;65-86177-5011) (STARTING ONLY) (SEE 25-1, FIG.								
		2E, ITEM 92 25-1, FIG. 180H, ITEM 108)								
	69-46114-10	. MODULE ASSY, P13J ENGINE START (STARTING ONLY). . . . .							5199	RF
	69-46114-11	. MODULE ASSY, P13Q ENGINE START (STARTING ONLY). . . . .							5199	RF
1	BACK20E2	. . . KNOB ASSY . . . . .							5199	2
2	A9-23	. . . SWITCH, ROTARY (V81640) . . . . .							5199	2
	69-46128-7	. MODULE ASSY, P13N GROUND START (STARTING ONLY). . . . .							5199	RF
6	16115-1	. . . GUARD, SWITCH (V72914). . . . .							5199	1
7	MS24523-21	. . . SWITCH. . . . .							5199	1
		. FOR REFERENCE TO OTHER MODULE DETAILS, SEE NHA. . . . .							5199	

MISSING ITEM NUMBERS ARE NOT APPLICABLE

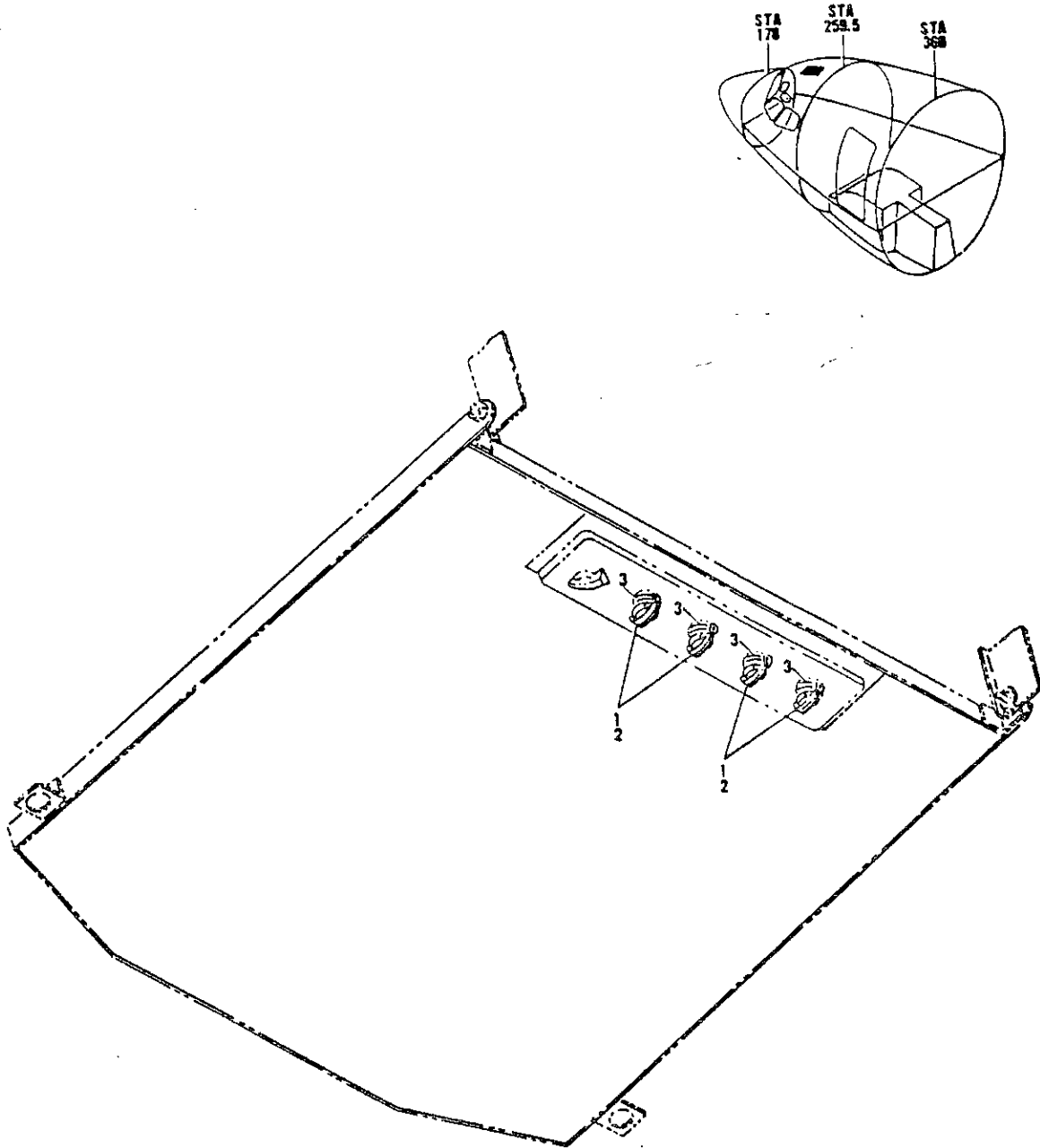


FIGURE 22. MODULE INSTL, P13 PILOTS OVERHEAD (STARTING ONLY)

# BOEING

## 707

### PARTS CATALOG (MAINTENANCE)

FIGURE & ITEM NO.	MANUFACTURER'S PART NUMBER	NOMENCLATURE							EFF FROM TO	UNITS PER ASSY	
		1	2	3	4	5	6	7			
R R R R R R R	22	65-58786-1	MODULE INSTL, P13 PILOTS OVERHEAD (STARTING ONLY) . . .							0150	RF
			(DELETED BY MOOD 7211.019-225) (SEE 25-1, FIG. 1K, ITEM 6)								
		391-31-10-74168-001	MODULE INSTL, P13 PILOTS OVERHEAD (STARTING ONLY) . . .							0103	RF
			(VS2500) (65-58786-1 MODIFIED BY MOD 7211.019-225)								
			(SEE 25-1, FIG. 1K, ITEM 6)								
		391-31-10-74168-003	MODULE INSTL, P13 PILOTS OVERHEAD (STARTING ONLY) . . .							0450	RF
			(VS2500) (65-58786-1 MODIFIED BY MOD 7211.019-225)								
		(SEE 25-1, FIG. 1K, ITEM 6)									
		65-64865-1	. MODULE ASSY, P13J ENGINE START (STARTING ONLY). . . .							0150	RF
			(REWORKED BY SB 2875)								
	1	BACK20E2	. . . KNOB ASSY . . . . .							0150	4
	2	MS51973-18	. . . SETSCREW . . . . .							0150	2
	3	A9-23	. . . SWITCH, ROTARY GANG (VB1640). . . . .							0150	4
			. FOR REFERENCE TO OTHER MODULE DETAILS, SEE NHA. . . .							0150	

MISSING ITEM NUMBERS ARE NOT APPLICABLE