

BOEING
707
PARTS CATALOG (MAINTENANCE)

CHAPTER 82
WATER INJECTION
TABLE OF CONTENTS

SECTION	FIGURE
82-01 WATER INJECTION SYSTEM	
BEAM INSTL, STATION 820 TO 960 KEEL	12
BULKHEAD INSTL, STATION 860 KEEL BEAM	13
CAP INSTL, NACELLE STRUT WATER INJECTION	21A
CAP INSTL, NACELLE STRUT WATER INJECTION	22A
FITTING INSTL, NACELLE STRUT LOWER SPAR PLUMBING.	21A
FITTING INSTL, NACELLE STRUT LOWER SPAR PLUMBING.	22A
PLUMBING INSTL, OUTBOARD NACELLE STRUT WATER INJECTION	21A
PLUMBING, CAP AND FITTING INSTL, INBOARD NACELLE STRUT WATER INJECTION	22A
SCOOP INSTL, FAN ENGINE WATER INJECTION REGULATOR FLUSH TYPE.	9
SPACER INSTL, WATER INJECTION SHUTOFF VALVE REPLACEMENT	6
TUBING INSTL, SECTION 22 WATER INJECTION.	25

BOEING **707** *Intercontinental* 
PARTS CATALOG

SECTION 01
WATER INJECTION SYSTEM

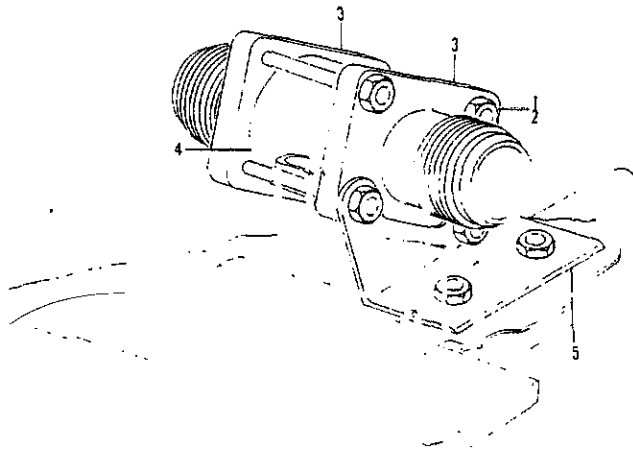
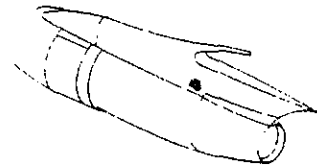


FIGURE 6. SPACER INSTL, WATER INJECTION SHUTOFF VALVE REPLACEMENT



PARTS CATALOG

FIGURE & ITEM NO.	MANUFACTURER'S PART NUMBER	NOMENCLATURE							EFF FROM TO	UNITS PER ASSY	
		1	2	3	4	5	6	7			
R R R R R R R R R R R	65-11649-3	SPACER INSTL, WATER INJECTION SHUTOFF VALVE REPLACEMENT (NACELLES NO. 1 AND 4) (SEE 54-1, FIG. 6A, ITEM 17, 54-1, FIG. 6B, ITEM 13 AND 54-1, FIG. 6C, ITEM 18)							0150	RF	
	65-11649-2	SPACER INSTL, WATER INJECTION SHUTOFF VALVE REPLACEMENT (NACELLES NO. 2 AND 3) (SEE 54-1, FIG. 21, ITEM 7)							0150	RF	
	1	NAS1104-32W	. BOLT.							0150	4
	2	NAS679A4W	. NUT							0150	4
	3	MS20760-20-24	. CONNECTOR							0150	2
	4	65-11649-4	. SPACER, WATER INJECTION SHUTOFF REPLACEMENT							0150	1
	5	66-10666-4	. ANGLE, SUPPORT (ENGINES NO. 1 AND 4).							0150	1
	5	66-10666-3	. ANGLE, SUPPORT (ENGINES NO. 2 AND 3).							0150	1
			ATTACHING PARTS								
		NAS1103-4W	. BOLT.							0150	2
		AN970-3	. WASHER.							0150	2
	NAS679A3W	. NUT							0150	2	
-----*											

MISSING ITEM NUMBERS ARE NOT APPLICABLE

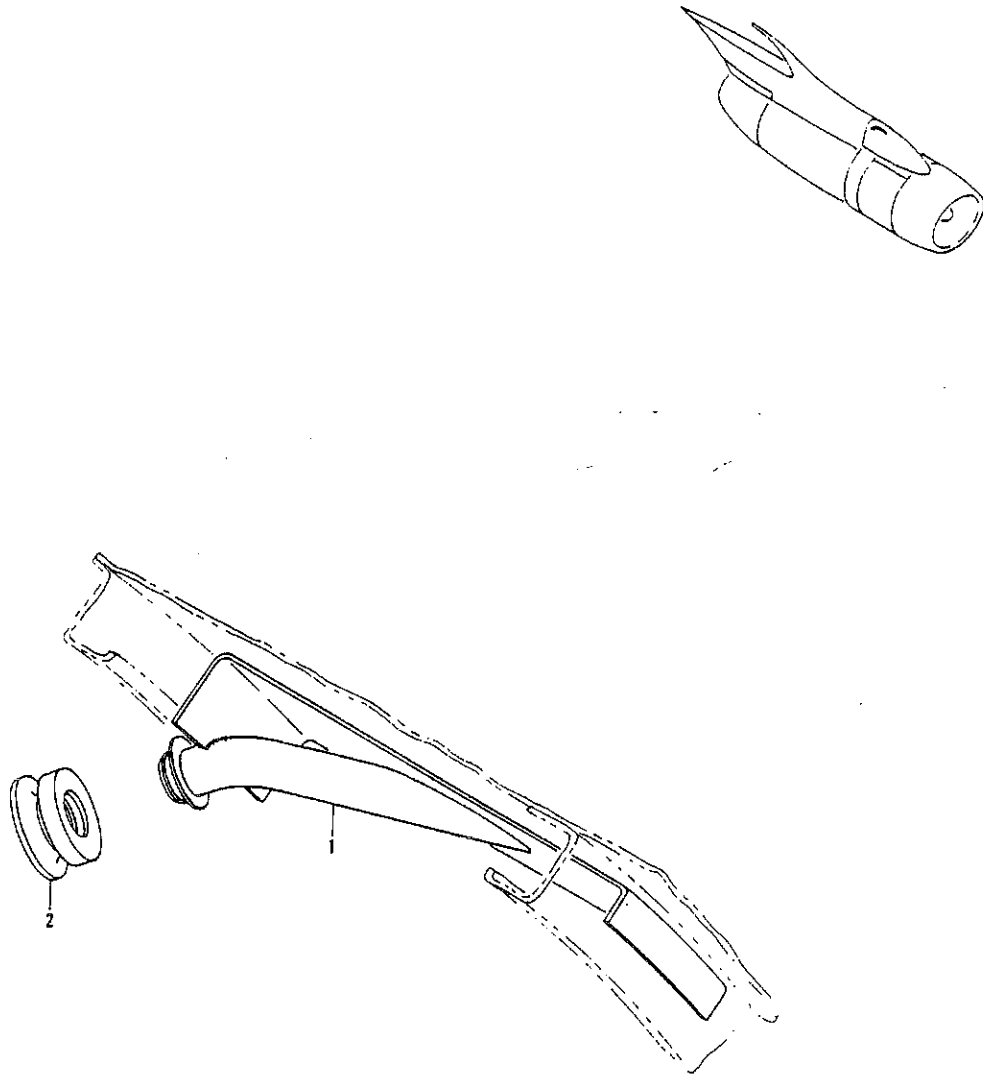


FIGURE 9. SCOOP INSTL, FAN ENGINE WATER INJECTION REGULAR FLUSH TYPE



PARTS CATALOG

FIGURE & ITEM NO.	MANUFACTURER'S PART NUMBER	NOMENCLATURE							EFF FROM TO	UNITS PER ASSY
		1	2	3	4	5	6	7		
9	65-18735-6	SCOOP INSTL, FAN ENGINE WATER INJECTION REGULATOR FLUSH TYPE (LH) (SEE 71-2, FIG. 12, ITEM 90A)								RF
1	65-18735-7	. SCOOP ASSY, FAN ENGINE WATER INJECTION REGULATOR. . . FLUSH TYPE								1
2	3-86461-2	. SEAL, ENGINE COMBUSTION CHAMBER (SPEC NO. MIL-R-29897)								1
MISSING ITEM NUMBERS ARE NOT APPLICABLE										

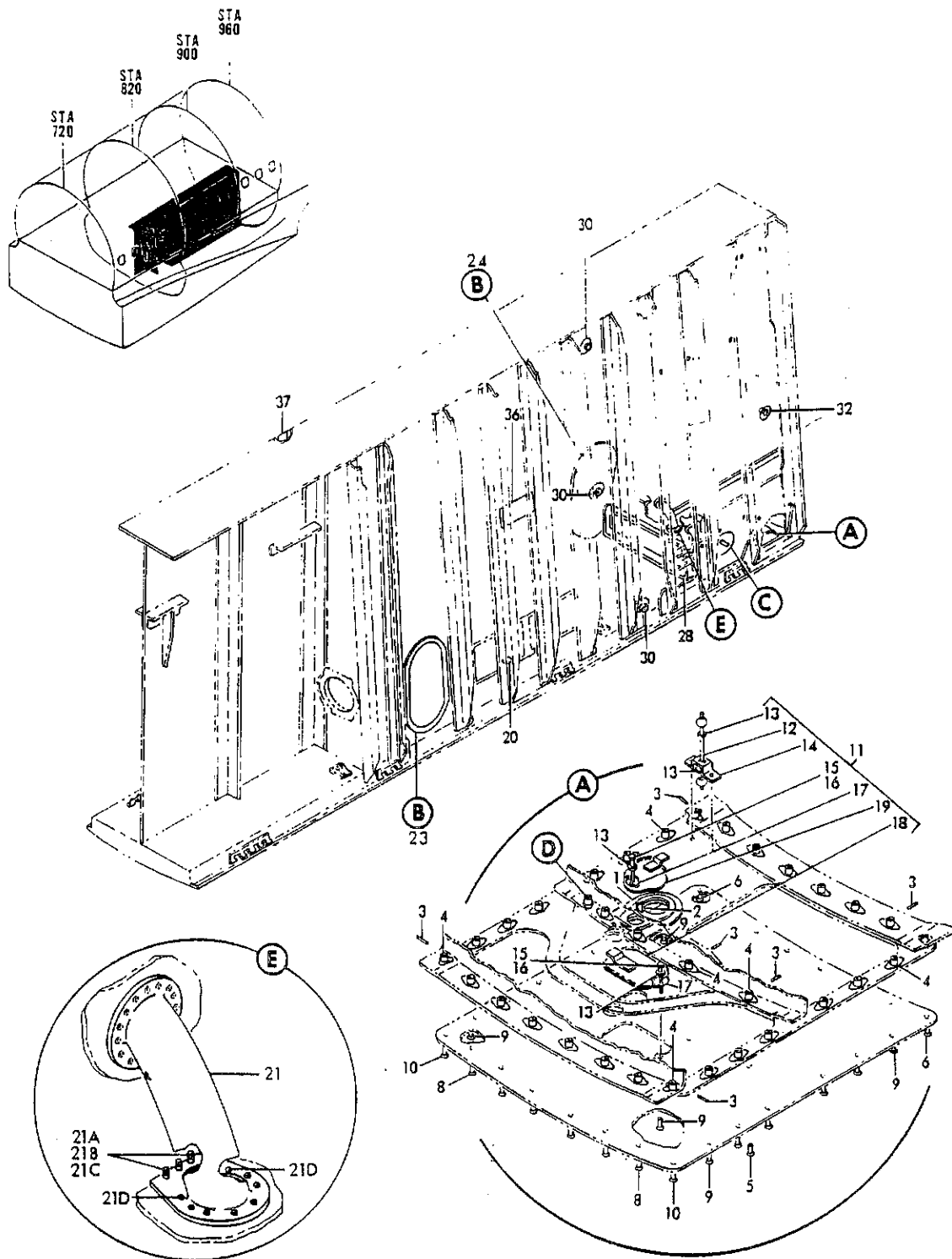


FIGURE 12. BEAM INSTL, STATION 820 TO 960 KEEL (WATER INJECTION ONLY) (SHEET 1)

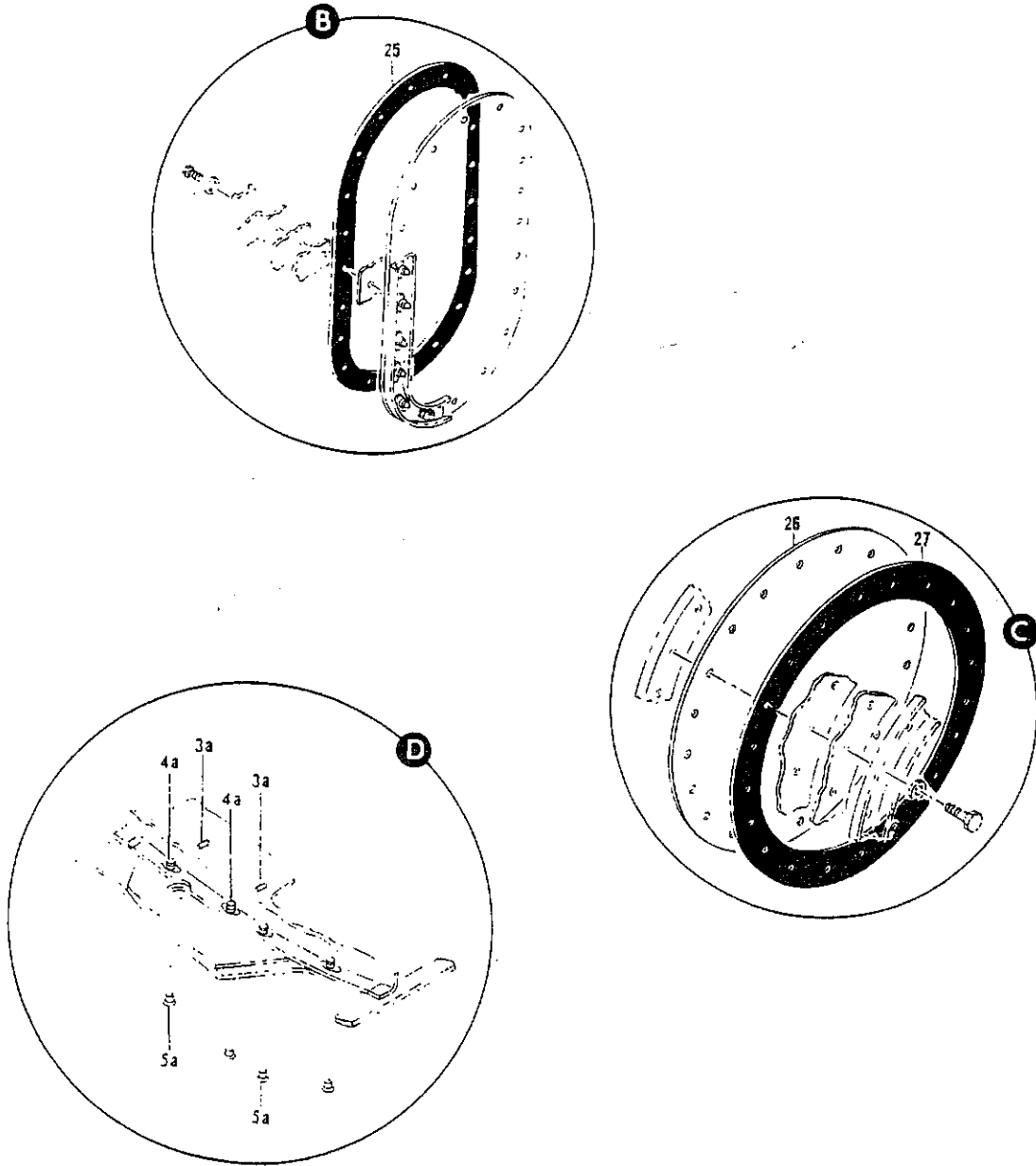


FIGURE 12. BEAM INSTL, STATION 820 TO 960 KEEL (WATER INJECTION ONLY) (SHEET 2)

NOV 21/90

82-01-12

DETAILED PARTS LIST
 82-01-12
 PAGE 1

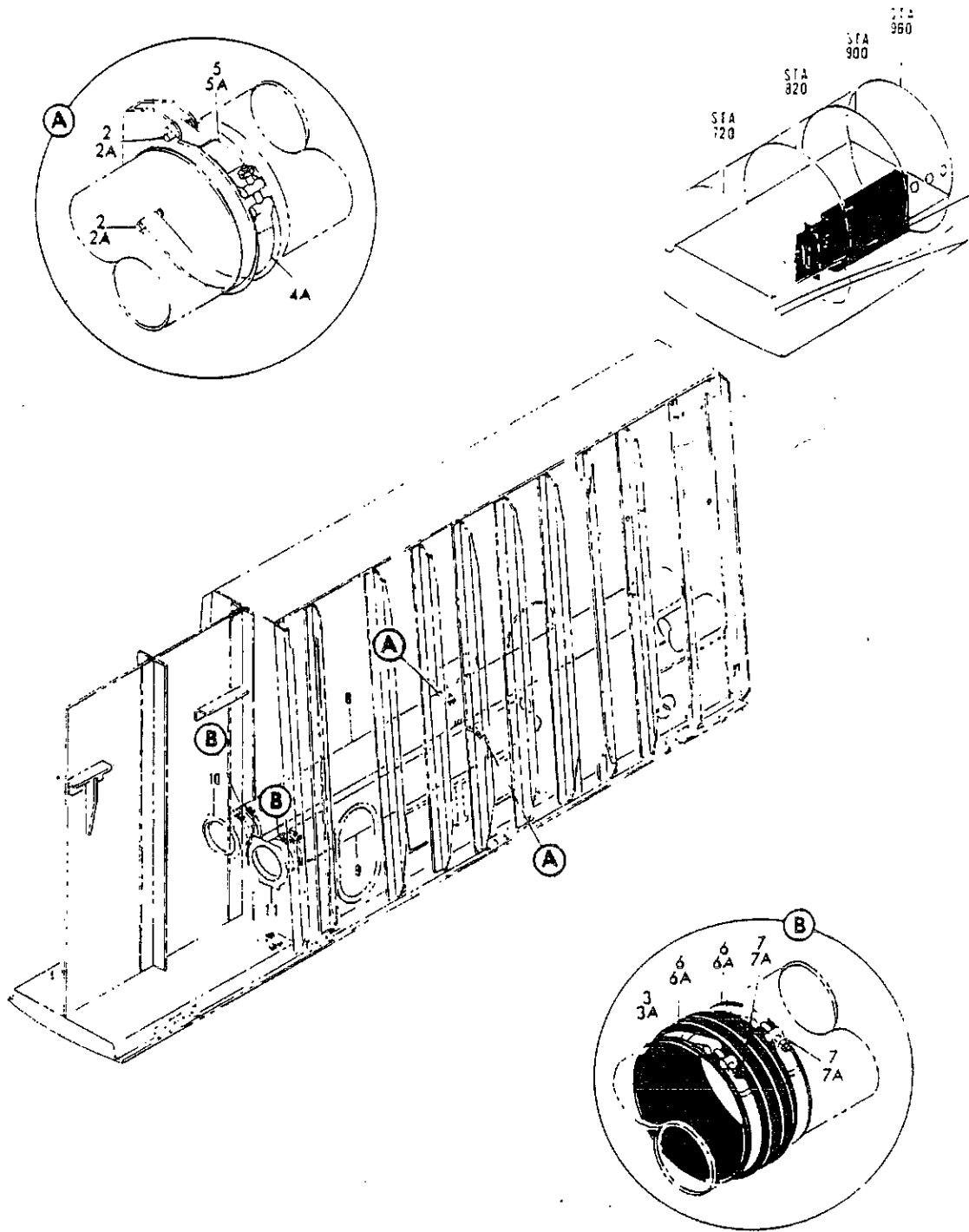


FIGURE 13. BULKHEAD INSTL. STATION 820 KEEL BEAM



PARTS CATALOG

FIGURE & ITEM NO.	MANUFACTURER'S PART NUMBER	NOMENCLATURE							EFF. FROM TO	UNITS PER ASSY
		1	2	3	4	5	6	7		
13	65-5627-27	BULKHEAD INSTL, STATION 860 KEEL BEAM (SEE FIG. 12, . . . ITEM 37)								RF
	50-5328	. SHROUD INSTL, STATION 860 TO 960 WATER INJECTION TANK								1
2	MS20392-4-29	. . . PIN								2
3	50-5328-23	. . . SLEEVE, STATION 860 TO 960 WATER INJECTION TANK . . . SHROUD RUBBER								1
4	BACC10Q12-1000	. . . CLAMP								1
5	BACC10Q10-375	. . . CLAMP								1
6	BACC10BNA725LSH	. . . CLAMP								2
7	NAS679A3W	. . . NUT, (TO REPLACE NUT SUPPLIED WITH BACC10BNA725LSH)								2
8	50-5328-19	. . . TUBE ASSY, STATION 860 TO 960 WATER INJECTION TANK SHROUD (LH)								1
9	50-5328-20	. . . TUBE ASSY, STATION 860 TO 960 WATER INJECTION TANK SHROUD (RH)								1
10	50-5328-5	. FLANGE ASSY, STATION 860 TO 960 WATER INJECTION . . . TANK SHROUD LH								1
11	50-5328-6	. FLANGE ASSY, STATION 860 TO 960 WATER INJECTION . . . TANK SHROUD RH								1

MISSING ITEM NUMBERS ARE NOT APPLICABLE

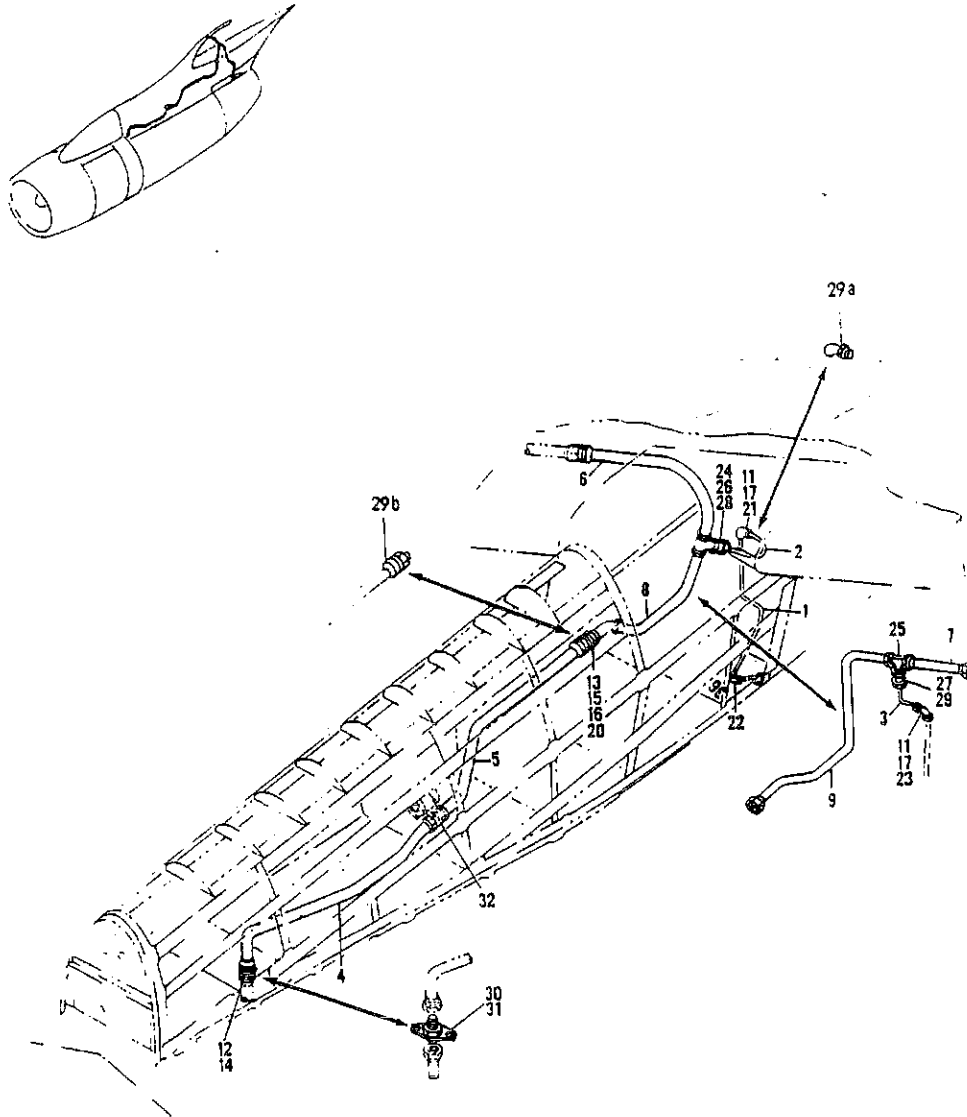


FIGURE 21A. PLUMBING INSTL, OUTBOARD NACELLE STRUT WATER INJECTION;
 CAP INSTL, NACELLE STRUT WATER INJECTION
 FITTING INSTL, NACELLE STRUT LOWER SPAR PLUMBING (WATER INJECTION ONLY)

PARTS CATALOG

FIGURE & ITEM NO.	MANUFACTURER'S PART NUMBER	NOMENCLATURE	EFF FROM TO	UNITS PER ASSY
R R R	21A	PLUMBING INSTL, OUTBOARD NACELLE STRUT WATER INJECTION	0150	
		CAP INSTL, NACELLE STRUT WATER INJECTION	0150	
		FITTING INSTL, NACELLE STRUT LOWER SPAR PLUMBING (WATER INJECTION ONLY)	0150	
R R R R R	65-11904-399	. PLUMBING INSTL, OUTBOARD NACELLE STRUT WATER INJECTION (SEE 54-1, FIG. 6A, ITEM 35, 54-1, FIG. 6B, ITEM 6 AND 54-1, FIG. 6C, ITEM 11)	0150	RF
R R R	1 65-11904-803	. . . TUBE ASSY, DRAIN 1/2 .028 3052-0	0150	1
R R R	2 65-11904-329	. . . TUBE ASSY, DRAIN 1/2 IN. .028 6061-0 (OPTIONAL . . . 6061-T4) (NACELLE NO. 1)	0150	1
R R R	3 65-11904-330	. . . TUBE ASSY, DRAIN 1/2 IN. .028 6061-0 (OPTIONAL . . . 6061-T4) (NACELLE NO. 4)	0150	1
R R R	MS2192108	. . . NUT	0150	2
R R R	8ACS13AP8	. . . SLEEVE, (OPTIONAL MS21922-8)	0150	2
R R R	4 65-11904-810	. . . TUBE ASSY, WATER INJECTION 1-1/4 IN. .035 5052-0 . . .	0150	1
R R R	5 65-11904-384	. . . TUBE ASSY, WATER INJECTION 1-1/4 IN. .035 5052-0 . . .	0150	1
R R R	6 65-11904-325	. . . TUBE ASSY, WATER INJECTION 1-1/4 IN. .035 6061-0 . . . (OPTIONAL 6061-T4) (NACELLE NO. 1)	0150	1
R R R	7 65-11904-326	. . . TUBE ASSY, WATER INJECTION 1-1/4 IN. .035 6061-0 . . . (OPTIONAL 6061-T4) (NACELLE NO. 4)	0150	1
R R R	8 65-11904-327	. . . TUBE ASSY, WATER INJECTION 1-1/4 IN. .035 6061-0 . . . (OPTIONAL 6061-T4) (NACELLE NO. 1)	0150	1
R R R	9 65-11904-328	. . . TUBE ASSY, WATER INJECTION 1-1/4 IN. .035 6061-0 . . . (OPTIONAL 6061-T4) (NACELLE NO. 4)	0150	1
R R R	NAS593-20	. . . NUT	0150	2
R R R	11 AN924-80	. . . NUT	0150	1
R R R	12 AN924-20	. . . NUT	0150	1
R R R	13 AN924-200	. . . NUT	0150	1
R R R	14 AN960-2616	. . . WASHER	0150	1
R R R	15 AN960PD2616	. . . WASHER	0150	1
R R R	16 AN960PD2616	. . . WASHER	0150	1
R R R	17 AN960PD1216	. . . WASHER	0150	1
R R R	20 ANB37-200	. . . ELBOW	0150	1
R R R	21 MS2190808	. . . ELBOW, (NACELLE NO. 1)	0150	1
R R R	22 MS2190408	. . . ELBOW	0150	1
R R R	23 MS2190708	. . . ELBOW, (NACELLE NO. 4)	0150	1
R R R	24 63-8399	. . . TEE, WATER INJECTION SYSTEM 3/8 IN. INTERNAL BOSS . . . (NACELLE NO. 1)	0150	1
R R R	25 63-8399	. . . TEE, WATER INJECTION SYSTEM 3/8 IN. INTERNAL BOSS . . . (NACELLE NO. 4)	0150	1
R R R	26 MS29512-06	. . . PACKING, (NACELLE NO. 1)	0150	1
R R R	27 MS29512-06	. . . PACKING, (NACELLE NO. 4)	0150	1
R R R	28 8C129	. . . VALVE, CHECK (V82829) (NACELLE NO. 1) (OPTIONAL BAC SPEC NO. 10-3283)	0150	1
R R R	28 10-3283	. . . VALVE, CHECK (NACELLE NO. 1) (OPTIONAL TO 8C129 (V82829))	0150	1
R R R	29 8C129	. . . VALVE, CHECK (V82829) (NACELLE NO. 4) (OPTIONAL BAC SPEC NO. 10-3283)	0150	1
R R R	29 10-3283	. . . VALVE, CHECK (NACELLE NO. 4) (OPTIONAL TO 8C129 (V82829))	0150	1
R R R	69-30211-1	. . . CAP INSTL, NACELLE STRUT WATER INJECTION (OUTBOARD) . . . (SEE 54-1, FIG. 6A, ITEM 5, 54-1, FIG. 6B, ITEM 5 AND 54-1, FIG. 6C, ITEM 5)	0150	RF
R R R	30 AN929-20C	. . . CAP ASSY.	0150	1
R R R	65-31487-10	. . . FITTING INSTL, NACELLE STRUT LOWER SPAR PLUMBING . . . (OUTBOARD) (WATER INJECTION ONLY) (SEE 54-1, FIG. 6A, ITEM 4, 54-1, FIG. 6B, ITEM 3 AND 54-1, FIG. 6C, ITEM 3)	0150	RF
R R R	31 69-24405-7	. . . FITTING ASSY, (USED ON 65-31487-2, -10, -6 AND -14) ATTACHING PARTS	0150	1
R R R	NAS508M5	. . . RIVET	0150	2
R R R	32	. . . FOR REFERENCE TO OTHER FITTING DETAILS, SEE NHA . . . SPACER INSTL, WATER INJECTION SHUTOFF VALVE REPLACEMENT (FOR REF SEE FIG. 6)	0150	RF

MISSING ITEM NUMBERS ARE NOT APPLICABLE

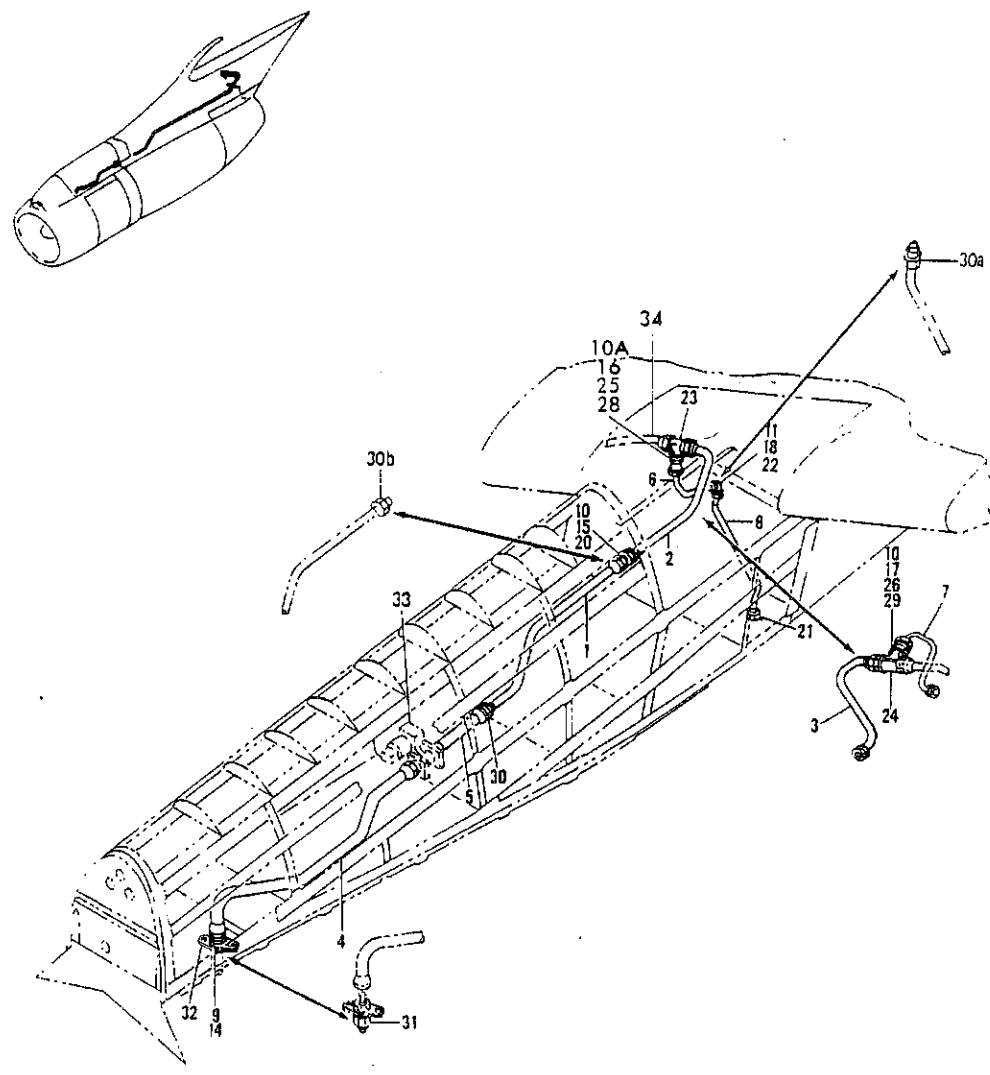


FIGURE 22A. PLUMBING, CAP AND FITTING INSTL, INBOARD NACELLE STRUT WATER INJECTION

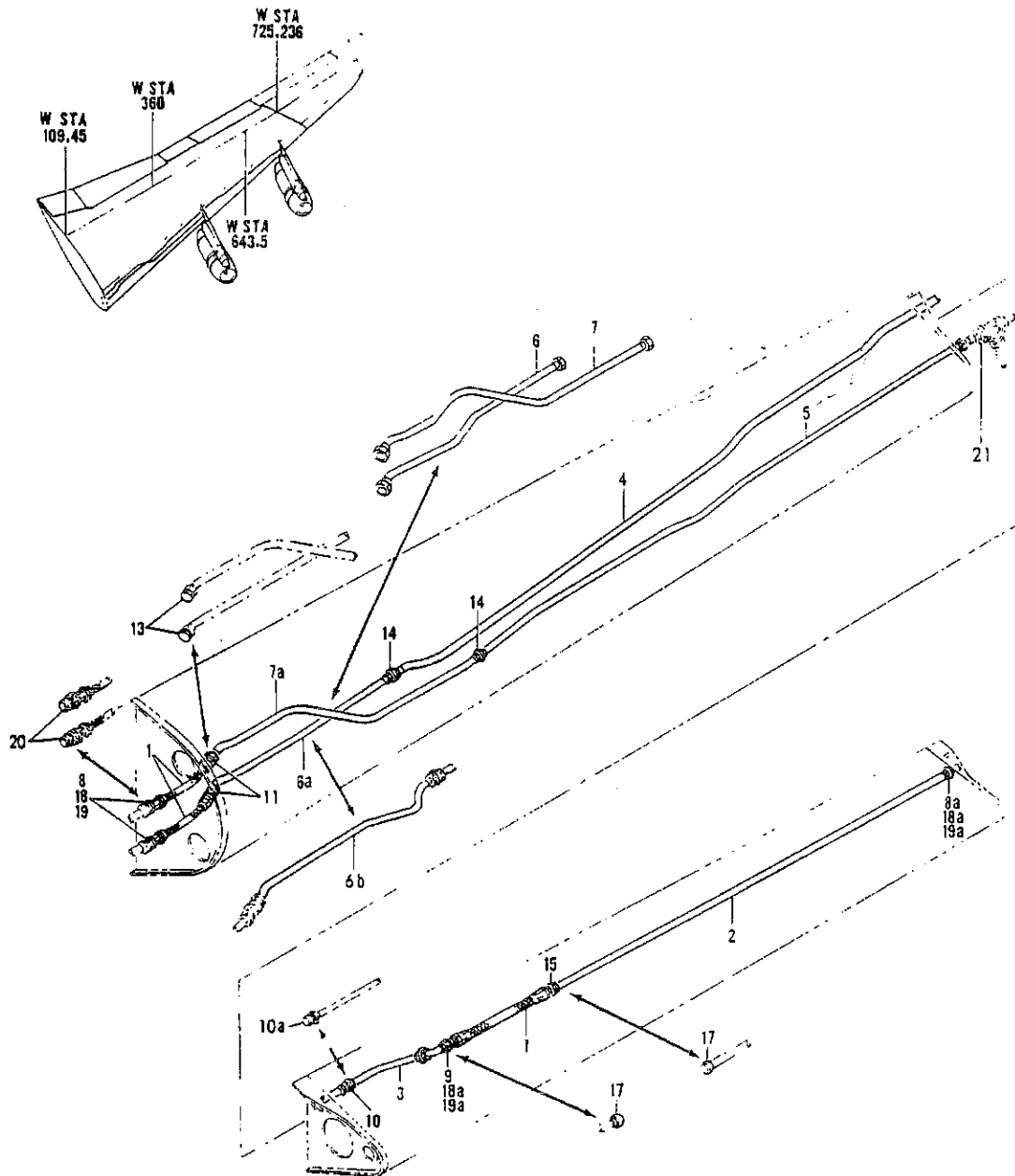


FIGURE 25. TUBING INSTL, SECTION 22 WATER INJECTION

FIGURE & ITEM NO.	MANUFACTURER'S PART NUMBER	NOMENCLATURE							EFF FROM TO	UNITS PER ASSY	
		1	2	3	4	5	6	7			
R R	25	65-19469-47	TUBING INSTL, SECTION 22 WATER INJECTION (LH) (SEE . . . 71-4, FIG. 1, ITEM 12)							0150	RF
		65-19469-46	TUBING INSTL, SECTION 22 WATER INJECTION (RH) (SEE . . . 71-4, FIG. 1, ITEM 12)							0150	RF
	2	65-19469-13	. TUBE ASSY, WATER INJECTION 1 1/4 IN. .035 6061-0. . . (OPTIONAL 6061-T4)							0150	1
		NAS591-20	. . . COUPLING.							0150	1
		NAS593-20	. . . NUT							0150	1
	3	65-19469-41	. TUBE ASSY, WATER INJECTION 1 1/4 IN. .035 6061-0. . . (OPTIONAL 6061-T4)							0150	1
		NAS593-20	. . . NUT, (LH ONLY).							0150	2
		NAS593-20	. . . NUT, (RH ONLY).							0150	2
	4	65-19469-37	. TUBE ASSY, WATER INJECTION 1 IN. .035 6061-0. . . (OPTIONAL 6061-T4) (LH ONLY)							0150	1
	4	65-19469-38	. TUBE ASSY, WATER INJECTION 1 IN. .035 6061-0. . . (OPTIONAL 6061-T4) (RH ONLY)							0150	1
	5	65-19469-49	. TUBE ASSY, WATER INJECTION 1 IN. .035 6061-0. . . (OPTIONAL 6061-T4) (LH ONLY)							0150	1
	5	65-19469-48	. TUBE ASSY, WATER INJECTION 1 IN. .035 6061-0. . . (OPTIONAL 6061-T4) (RH ONLY)							0150	1
		NAS593-16	. . . NUT							0150	2
		NAS593-16	. . . NUT, (LH ONLY).							0150	2
	6	65-19469-44	. TUBE ASSY, WATER INJECTION 1 .035 6061-0 (OPTIONAL 6061-T4) (LH ONLY)							0150	1
	6B	65-19469-50	. TUBE ASSY, WATER INJECTION 1 IN. .035 6061-0. . . (OPTIONAL 6061-T4) (RH ONLY)							0150	1
	7	65-19469-43	. TUBE ASSY, WATER INJECTION 1 .035 6061-0 (OPTIONAL 6061-T4) (LH ONLY)							0150	1
	7A	65-19469-32	. TUBE ASSY, WATER INJECTION 1 IN. .035 6061-0. . . (OPTIONAL 6061-T4) (RH ONLY)							0150	1
		NAS591-16	. . . COUPLING.							0150	1
		NAS593-16	. . . NUT							0150	1
	8A	AN832-20D	. UNION							0150	1
9	AN837-20D	. ELBOW							0150	1	
10	AN919-26D	. REDUCER, (LH ONLY).							0150	1	
10	AN919-26D	. REDUCER, (RH ONLY).							0150	1	
13	AN806D16	. PLUG.							0150	2	
14	NAS592-16E	. RING.							0150	2	
15	NAS592-20E	. RING.							0150	1	
17	AN929-20	. CAP ASSY.							0150	2	
18A	AN960PD2616	. WASHER.							0150	2	
19A	AN924-20D	. NUT							0150	2	
21		PLUMBING CAP AND FITTING INSTL, INBOARD NACELLE STRUT WATER INJECTION (FOR REF. SEE FIG. 22 AND 22A)							0150	RF	

MISSING ITEM NUMBERS ARE NOT APPLICABLE