



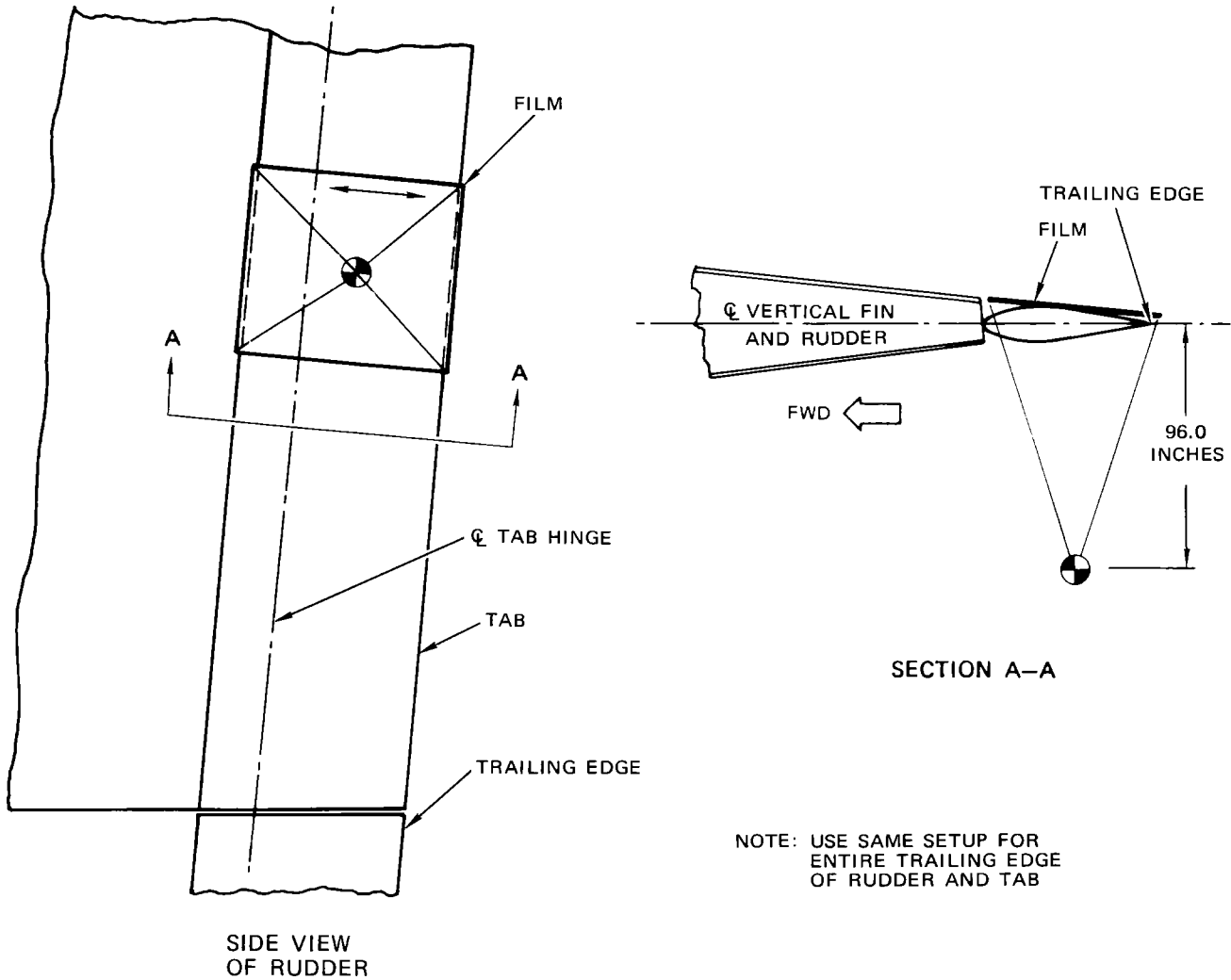
NONDESTRUCTIVE TEST

PART 2 - X-RAY

RUDDER

Purpose

To detect moisture in honeycomb structure in rudder control and balance tabs.



NOTE: USE SAME SETUP FOR ENTIRE TRAILING EDGE OF RUDDER AND TAB

EXPOSURE NUMBER	FILM			SFD	GENERATOR SETTINGS	
	POSITION	ASTM CLASS	SIZE		KV	MAS
*[1]	*[1]	I	11 x 17	96	90	270

*[1] AS MANY AS REQUIRED TO COVER ENTIRE TAB

Rudder Tabs
Figure 1

666784

707 NDT
Apr 5/07

Part 2
55-40-07
Page 1