
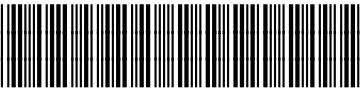


sabena [®] B707	Module: LH WING + FL CTR	A/C Reg :	Check :	 31F3000509
	Oper. : RT-MP LC			
	Type : STRUCT-INSP	Issuer : A43710	Cert.St.: 24828	Page 1 of 4
Spec. : MECHANIC	Release Date: 09.10.2001			

AD 90-25-07 rev 6788 LH WING INT STRUCT T/E CAV INSP

		MAINT	RII/INSP
Execution / Start Date:			
End Date:			

AD 90-25-07 rev 6788 LH WING INT STRUCT T/E CAV INSP

sabena B707	Module: LH WING + FL CTR	A/C Reg :	Check :	 31F3000509 Page 2 of 4
	Oper. : RT-MP LC	Issuer : A43710	Cert.St.: 24828	
	Type : STRUCT-INSP	Release Date: 09.10.2001		
Spec. : MECHANIC				

AD 90-25-07 rev 6788 LH WING INT STRUCT T/E CAV INSP

					MAINT	RII/INSP
Nr.	Hardtime	Task	Spec.	Related Documents		
1.		E3	MEC	AD 90-25-07 rev 6788 CPCP C57-581-01P1 rev E MMS-328 575000 01000 rev 15/05/01 SB 57-3240 rev D		
Check: C1						
Zones: 581, 582, 583, 584						
Access:						

CONDITIONS: – All balance panels outboard aileron disconnected.

LH WING INTERNAL STRUCTURE, TRAILING EDGE CAVITY INCLUDING FLAPS AND FLAP TRACKS.


1. Perform inspection of exposed of internal and external areas of the LH wing trailing edge cavity aft of rear spar (visible portions without access removal), including all fixed trailing edge structure, rear spar, skins, ribs, ailerons, spoilers, flaps and fitting with particular attention to:
- Rear spar chords.
 - Flap tracks.
 - Flap track support fitting.

NOTE:
VISUALLY INSPECT SPAR CHORD PER SB 57-3240. INSPECT ALL EXPOSED AREAS AND THE MAIN LANDING GEAR TORQUE BOX (INT & EXT).

CORROSION INSPECTION SUMMARY.

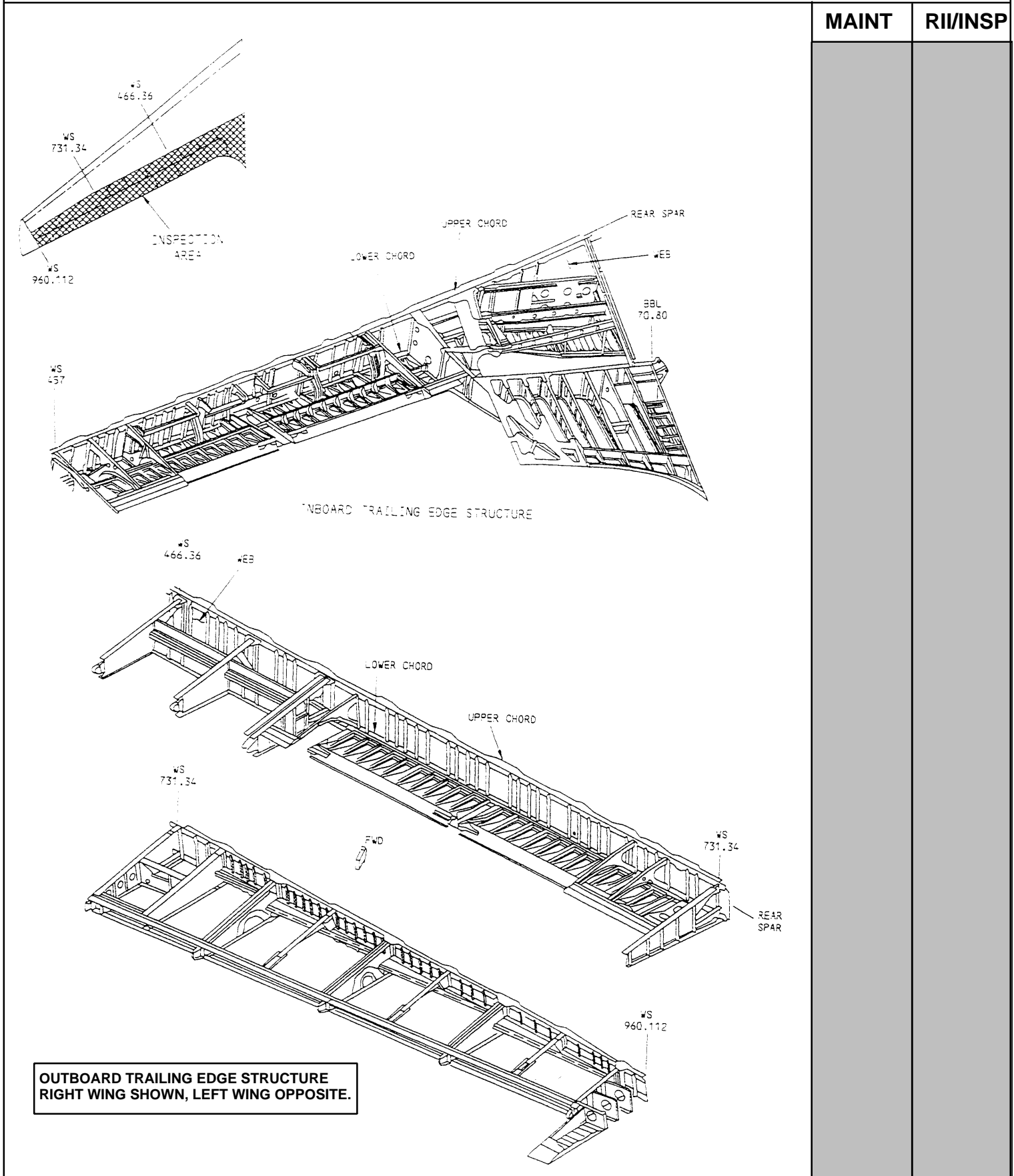
DESCRIPTION:	HIGHEST CORROSION LEVEL.				DR Nr.
	NO	1	2	3	
– Rear spar chords.					
– Flap tracks.					
– Flap track support fittings.					

2. Clear any blocked holes or gaps that may hinder drainage.
3. Apply DINITROL (in area LH wing trailing edge cavity internal aft of rear spar).

sabena B707	Module: LH WING + FL CTR	A/C Reg :	Check :	
	Oper. : RT-MP LC	Issuer : A43710	Cert.St.: 24828	
	Type : STRUCT-INSP	Release Date: 09.10.2001	Page 3 of 4	
Spec. : MECHANIC				


AD 90-25-07 rev 6788

LH WING INT STRUCT T/E CAV INSP



AD 90-25-07 rev 6788

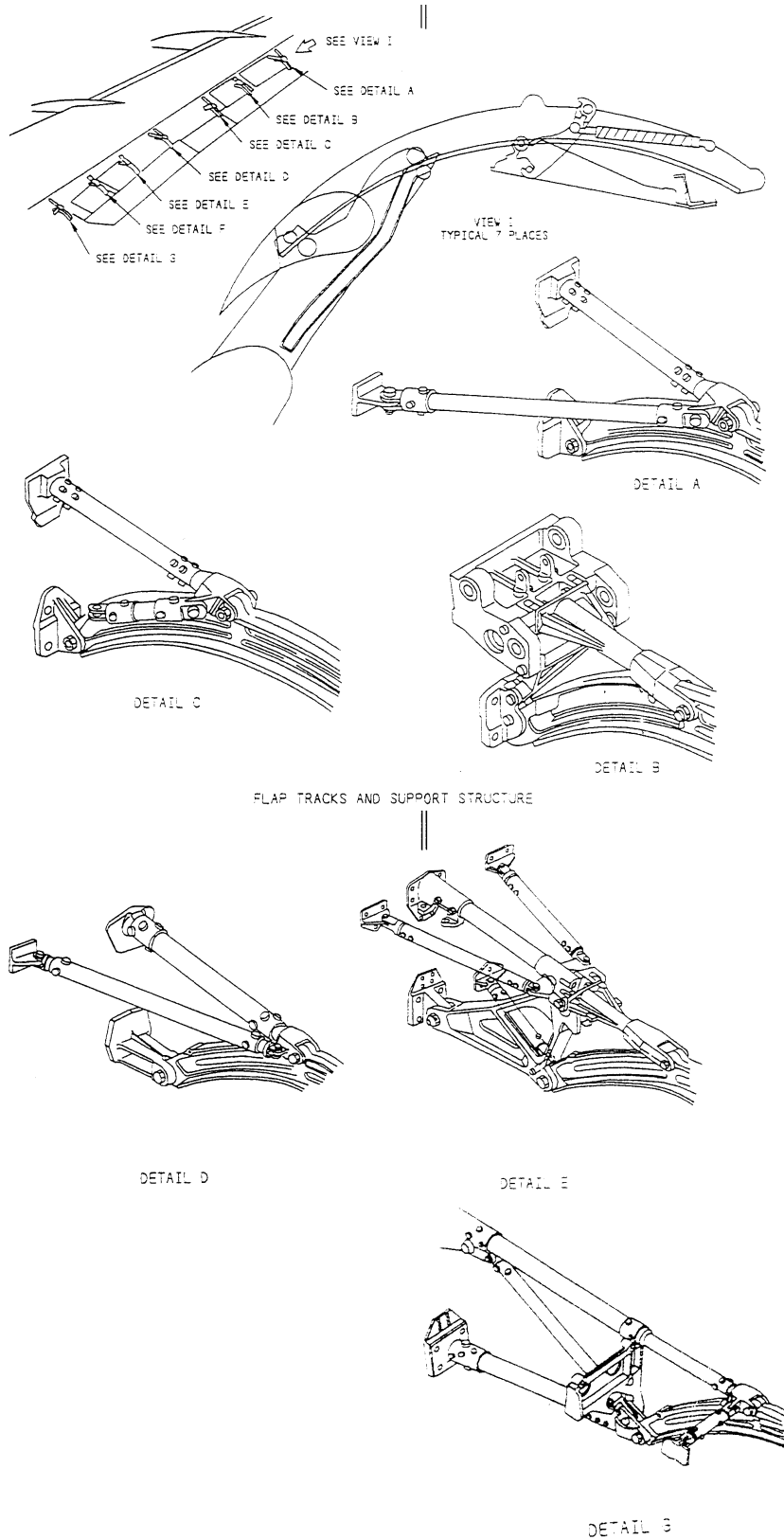
LH WING INT STRUCT T/E CAV INSP

sabena B707	Module: LH WING + FL CTR	A/C Reg :	Check :	 31F3000509
	Oper. : RT-MP LC	Issuer : A43710	Cert.St.: 24828	
	Type : STRUCT-INSP	Release Date: 09.10.2001	Page 4 of 4	
Spec. : MECHANIC				

AD 90-25-07 rev 6788

LH WING INT STRUCT T/E CAV INSP

MAINT	RII/INS
-------	---------



AD 90-25-07 rev 6788

LH WING INT STRUCT T/E CAV INSP