



<b>sabena</b> <sup>®</sup> <b>B707</b>	Module: LH WING + FL CTR	A/C Reg :	Check :	
	Oper. : RT-MP LC			
	Type : NDT INSP	Issuer : A59513	Cert.St.: 45379	<b>31F4000515</b>
Spec. : NDT INSP	Release Date: 13.11.2007		<b>Page 1 of 6</b>	

**LH WING LWR SURF HFEC INSP**

Execution / Start Date:	
End Date:	

MAINT	RII/INSP

<b>sabena</b> <b>B707</b>	Module: LH WING + FL CTR	A/C Reg :	Check :	 <b>31F4000515</b> Page 2 of 6
	Oper. : RT-MP LC	Issuer : A59513	Cert.St.: 45379	
	Type : NDT INSP	Release Date: 13.11.2007		
Spec. : NDT INSP				

**LH WING LWR SURF HFEC INSP**

					MAINT	RII/INSP	
Nr.	Hardtime	Task	Spec.	Related Documents			
1.	16527 CYC	E4	NDT	AD 81-11-06 R1 rev 4178 MMS-328 570150 02002 rev 15.07.05 SB 57A3395 rev .			
<b>Check:</b> C1							
<b>Zones:</b> 571, 572							
<b>Access:</b> 1325L, 1326L, 1327L, 1328L							
NRC YES <input type="radio"/> NO <input type="radio"/>		IF YES, NUMBER(S):					

**PREPARATION FOR INSPECTION:**

1. Defuel & purge tank.
2. Remove top internal fairing covering portion of stringers 5 & 7 at approx WS 440.

**HFEC INSPECTION OF WING LWR SURFACE STRINGERS S-5 S-7.**

DO A HFEC INTERNAL INSPECTION OF WING LOWER SURFACE ALLONG UPPER WEB OF STRINGER S-5 & S-7 UNDERNEATH RIB, AS SHOWN IN SB 3395 FIG 2 FLAGNOTE 3, FROM WBL 59.24 TO WS 733 (Refer. Doc. ,D6-48023, PART 6, 57-10-07, FIG 75).

**RESTORE AIRPLANE:**


1. Install top internal fairing covering portion of stringers 5 & 7 at approx WS 440.
2. Refuel tank.

Nr.	Hardtime	Task	Spec.	Related Documents			
2.	16636 CYC	E4	NDT	AD 81-11-06 R1 rev 4178 MMS-328 570150 02002 rev 15.07.05 SB 57A3395 rev .			
<b>Check:</b> C1							
<b>Zones:</b> 571, 572							
<b>Access:</b> 1325L, 1326L, 1327L, 1328L							
NRC YES <input type="radio"/> NO <input type="radio"/>		IF YES, NUMBER(S):					

**PREPARATION FOR INSPECTION:**

1. Defuel & purge tank.

**LH WING LWR SURF HFEC INSP**

<b>sabena</b> B707	Module: LH WING + FL CTR	A/C Reg :	Check :	
	Oper. : RT-MP LC			
	Type : NDT INSP	Issuer : A59513	Cert.St.: 45379	31F4000515
	Spec. : NDT INSP	Release Date: 13.11.2007		Page 3 of 6

LH WING LWR SURF HFEC INSP

MAINT RII/INSP

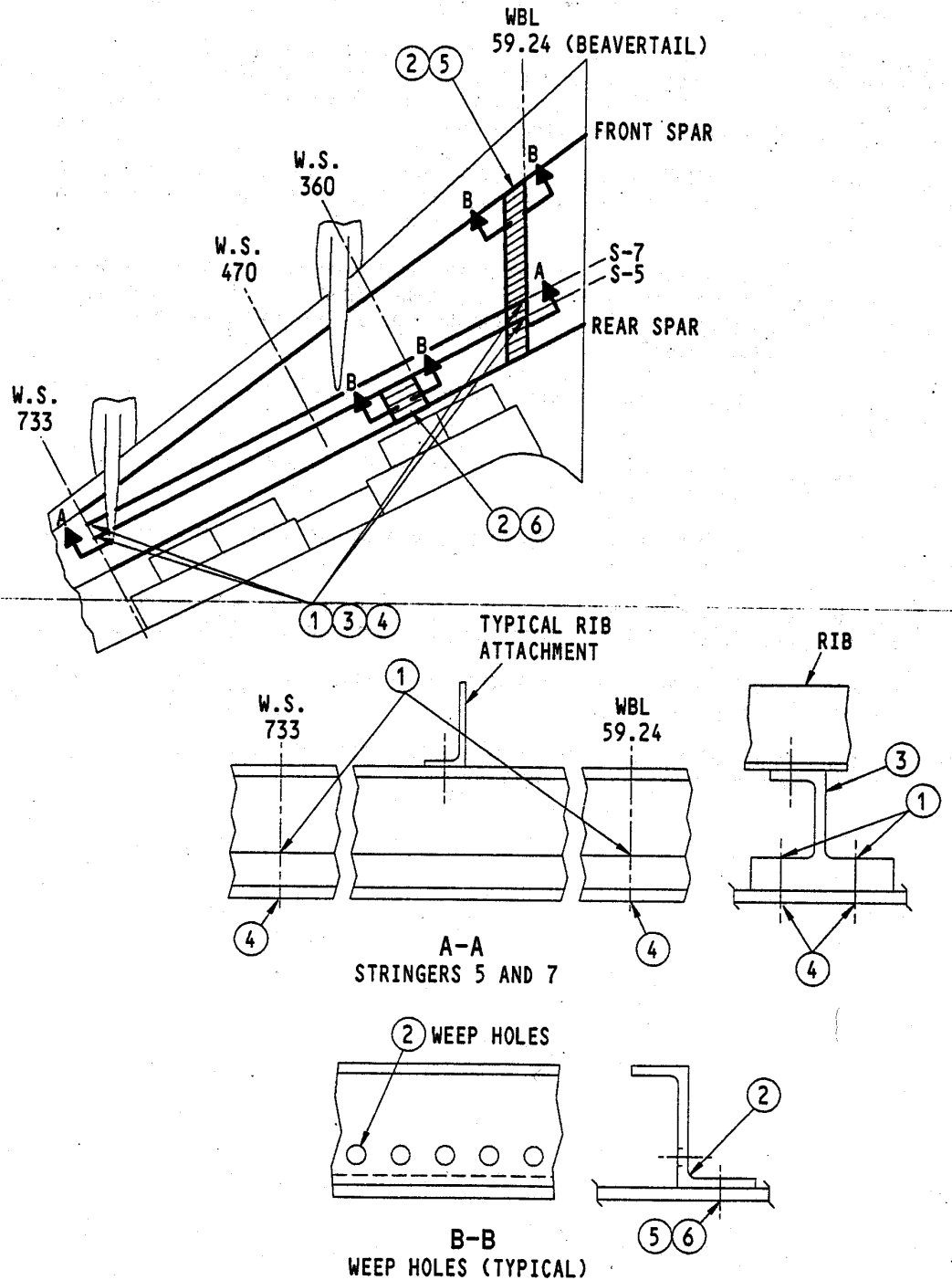



FIGURE 2. 707 SERIES INSPECTIONS OF WING LOWER SKIN AND STRINGERS



<b>sabena</b> B707	Module: LH WING + FL CTR	A/C Reg :	Check :	
	Oper. : RT-MP LC			
	Type : NDT INSP	Issuer : A59513	Cert.St.: 45379	31F4000515
	Spec. : NDT INSP	Release Date: 13.11.2007		Page 5 of 6

LH WING LWR SURF HFEC INSP

MAINT      RII/INSP

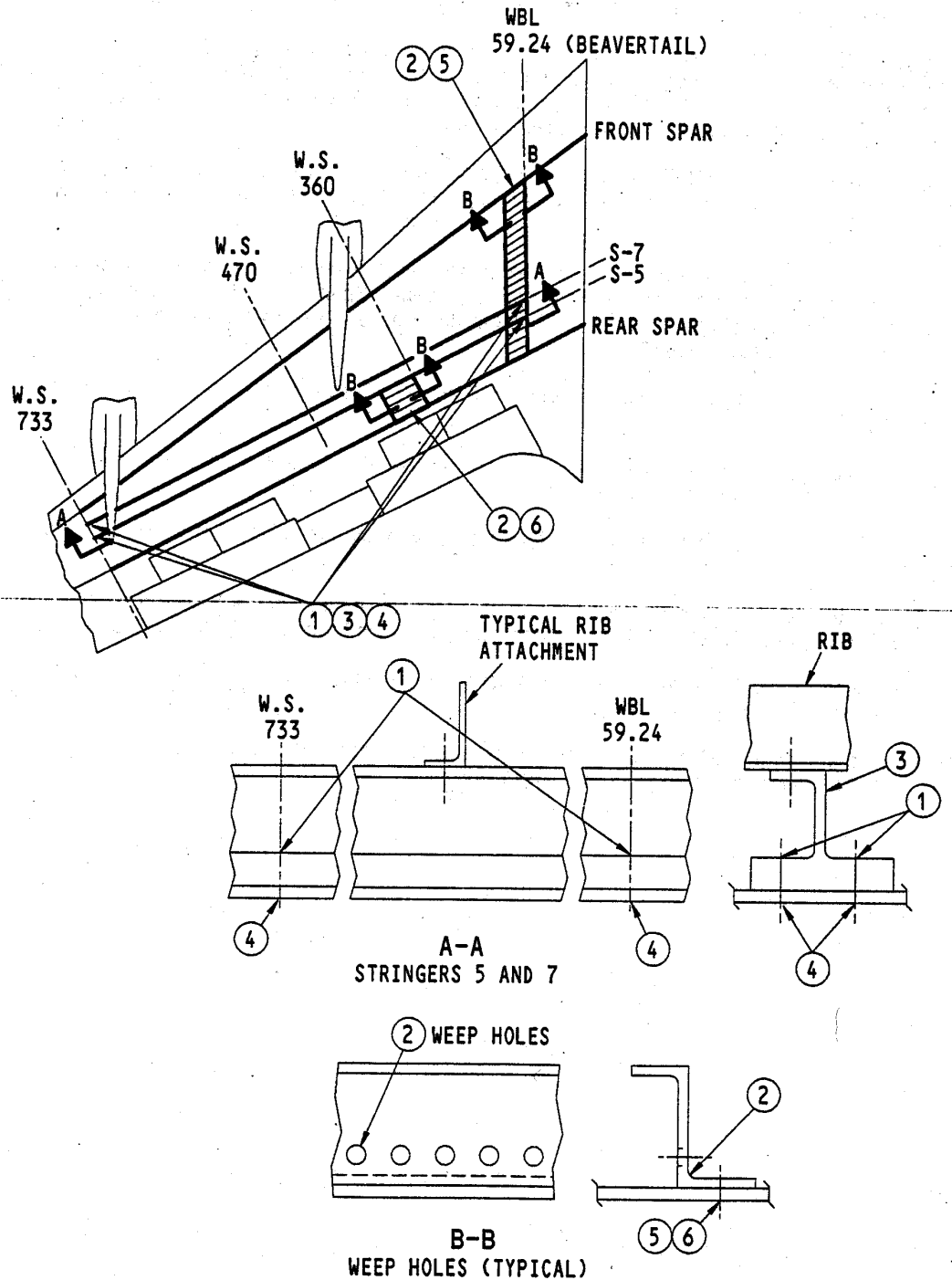



FIGURE 2. 707 SERIES INSPECTIONS OF WING LOWER SKIN AND STRINGERS

<b>sabena</b> B707	Module: LH WING + FL CTR	A/C Reg :	Check :	 31F4000515 Page 6 of 6
	Oper. : RT-MP LC			
	Type : NDT INSP	Issuer : A59513	Cert.St.: 45379	
	Spec. : NDT INSP	Release Date: 13.11.2007		

LH WING LWR SURF HFEC INSP

MAINT RII/INSP

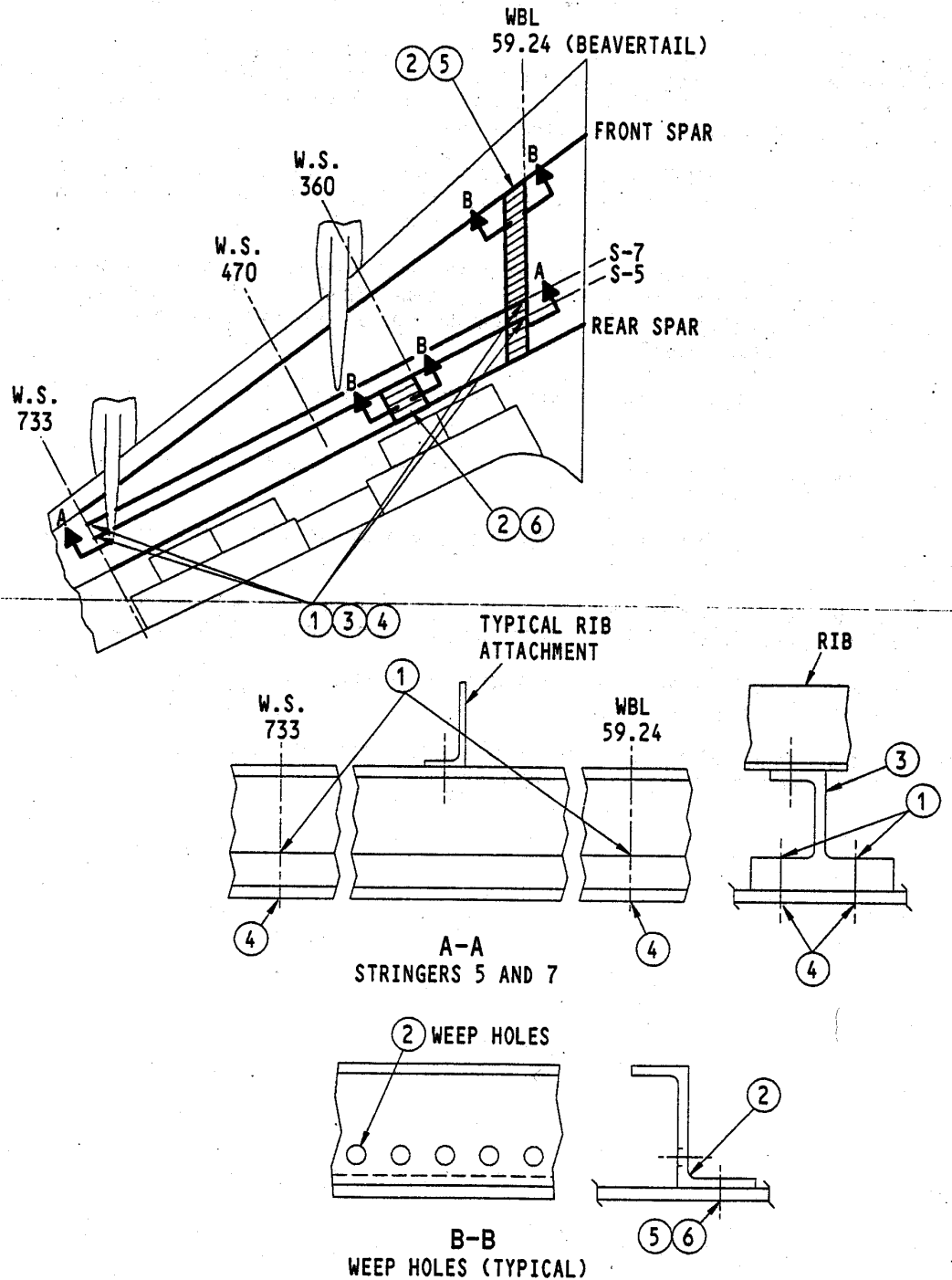


FIGURE 2. 707 SERIES INSPECTIONS OF WING LOWER SKIN AND STRINGERS