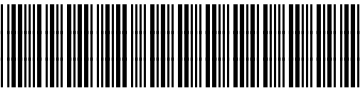



sabena [®] B707	Module: RH WING + FL CTR	A/C Reg :	Check :	 41F4000504
	Oper. : RT-MP LC			
	Type : NDT INSP	Issuer : A59513	Cert.St.: 46928	Page 1 of 7
Spec. : NDT INSP	Release Date: 24.11.2005			

RH WING LWR SURF HFEC INSP

Execution / Start Date:	
End Date:	

MAINT	RII/INSP

sabena B707	Module: RH WING + FL CTR	A/C Reg :	Check :	 41F4000504 Page 2 of 7
	Oper. : RT-MP LC	Issuer : A59513	Cert.St.: 46928	
	Type : NDT INSP	Release Date: 24.11.2005		
Spec. : NDT INSP				

RH WING LWR SURF HFEC INSP

					MAINT	RII/INSP	
Nr.	Hardtime	Task	Spec.	Related Documents			
1.	16527 CYC	E4	NDT	MMS-328 570150 02001 rev 15.07.05 SB 57A3395 REV4 rev OCT 08/99			
Check: C1							
Zones: 673, 674							
Access: 1325R, 1326R, 1327R, 1328R							
NRC YES <input type="radio"/> NO <input type="radio"/>		IF YES, NUMBER(S):					

PREPARATION FOR INSPECTION:

- Defuel & purge tank.
- Remove sealant as required from the FWD & AFT side of all fasteners comon to the lower flanges of stringers 5 & 7 from WS 470 to WS 730.

HFEC INSPECTION OF WING LWR SURFACE STRINGERS S-5 S-7.

DO A HFEC INTERNAL INSPECTION OF WING LOWER SURFACE STRINGERS S-5 & S-7,
WS 470 TROUGH WS 730: INSPECT STRINGER FOR CRACKS AT LOCATIONS SPECIFIED
IN SB 3395 FIG2 (Refer. Doc., D6-48023, PART 6, 57-10-07, FIG 75).

RESTORE AIRPLANE:


- Reapply sealant removed.
- Refuel tank.

Nr.	Hardtime	Task	Spec.	Related Documents			
2.	16636 CYC	E4	NDT	MMS-328 570150 02001 rev 15.07.05 SB 57A3395 REV4 rev OCT 08/99			
Check: C1							
Zones: 673, 674							
Access: 1325R, 1326R, 1327R, 1328R							
NRC YES <input type="radio"/> NO <input type="radio"/>		IF YES, NUMBER(S):					

PREPARATION FOR INSPECTION:

- Defuel & purge tank.

RH WING LWR SURF HFEC INSP

sabena B707	Module: RH WING + FL CTR	A/C Reg :	Check :	 41F4000504 Page 3 of 7
	Oper. : RT-MP LC			
	Type : NDT INSP	Issuer : A59513	Cert.St.: 46928	
	Spec. : NDT INSP	Release Date: 24.11.2005		

RH WING LWR SURF HFEC INSP

MAINT RII/INSP

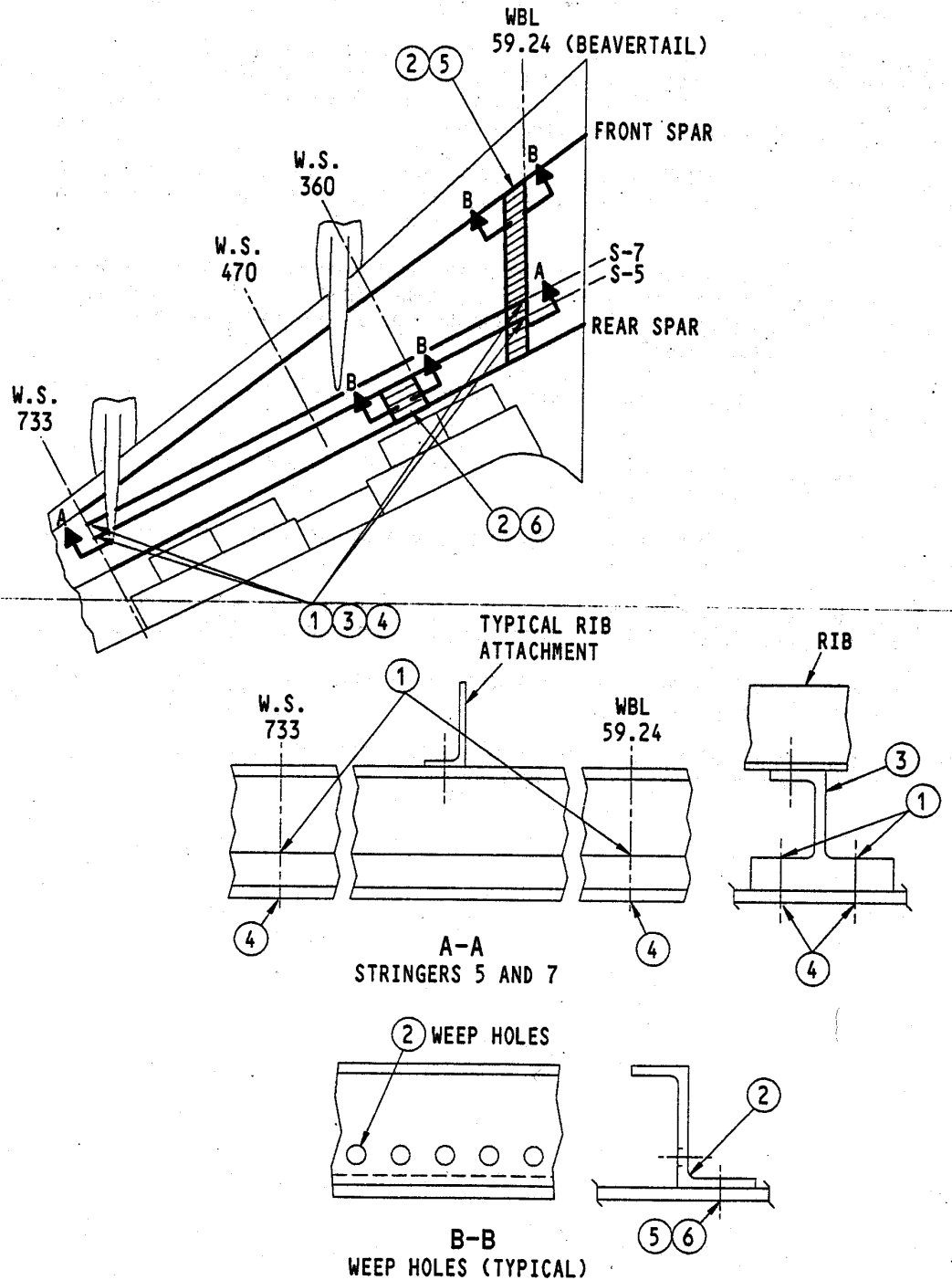
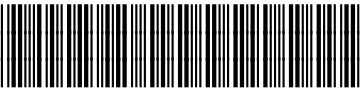


FIGURE 2. 707 SERIES INSPECTIONS OF WING LOWER SKIN AND STRINGERS

sabena B707	Module: RH WING + FL CTR	A/C Reg :	Check :	 41F4000504 Page 4 of 7
	Oper. : RT-MP LC	Issuer : A59513	Cert.St.: 46928	
	Type : NDT INSP	Release Date: 24.11.2005		
Spec. : NDT INSP				

RH WING LWR SURF HFEC INSP

2. Remove sealant as required from the FWD & AFT side of all fasteners comon to the lower flanges of stringers 5 & 7 from WS 470 to WS 730.

HFEC INSPECTION OF WING LWR SURFACE STRINGERS S-5 S-7.

DO A HFEC INTERNAL INSPECTION OF WING LOWER SURFACE STRINGERS S-5 & S-7, WS 470 TROUGH WS 730: INSPECT STRINGER FOR CRACKS AT LOCATIONS SPECIFIED IN SB 3395 FIG2 (Refer. Doc., D6-48023, PART 6, 57-10-07, FIG 75).

RESTORE AIRPLANE:

1. Reapply sealant removed.
2. Refuel tank.

MAINT **RII/INSP**

Nr.	Hardtime	Task	Spec.	Related Documents
3.		E4	NDT	MMS-328 570150 02001 rev 15.07.05 SB 57A3395 REV4 rev OCT 08/99
Check: C1				
Zones: 673, 674				
Access: 1325R, 1326R, 1327R, 1328R				
NRC YES <input type="radio"/> NO <input type="radio"/>		IF YES, NUMBER(S):		

PREPARATION FOR INSPECTION:

1. Defuel & purge tank.
2. Remove sealant as required from the FWD & AFT side of all fasteners comon to the lower flanges of stringers 5 & 7 from WS 470 to WS 730.


HFEC INSPECTION OF WING LWR SURFACE STRINGERS S-5 S-7.

DO A HFEC INTERNAL INSPECTION OF WING LOWER SURFACE STRINGERS S-5 & S-7, WS 470 TROUGH WS 730: INSPECT STRINGER FOR CRACKS AT LOCATIONS SPECIFIED IN SB 3395 FIG2 (Refer. Doc., D6-48023, PART 6, 57-10-07, FIG 75).

RESTORE AIRPLANE:

1. Reapply sealant removed.

RH WING LWR SURF HFEC INSP

sabena B707	Module: RH WING + FL CTR	A/C Reg :	Check :	 41F4000504 Page 5 of 7
	Oper. : RT-MP LC			
	Type : NDT INSP	Issuer : A59513	Cert.St.: 46928	
	Spec. : NDT INSP	Release Date: 24.11.2005		

RH WING LWR SURF HFEC INSP

MAINT RII/INSP

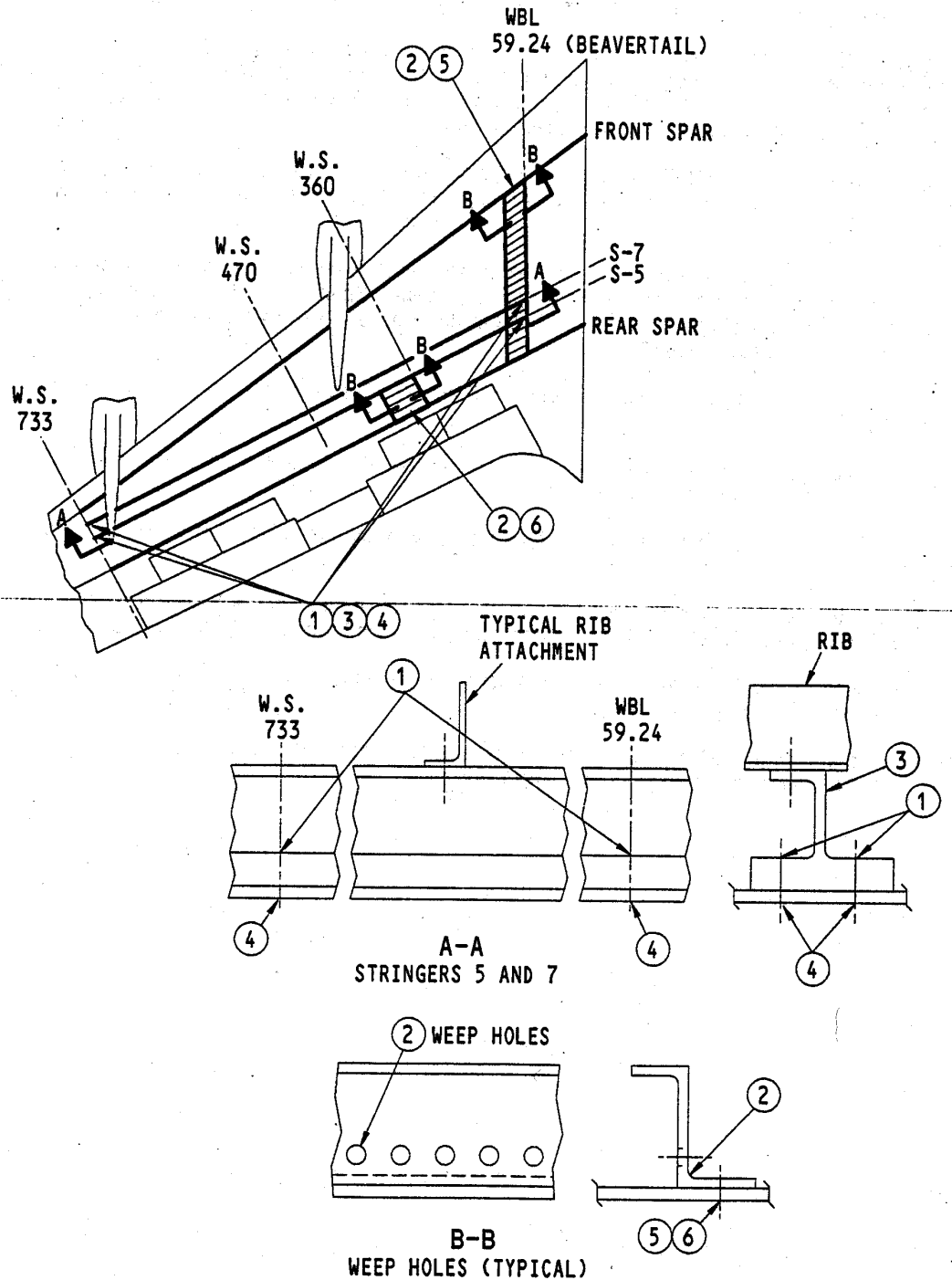
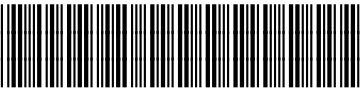



FIGURE 2. 707 SERIES INSPECTIONS OF WING LOWER SKIN AND STRINGERS

sabena [®] B707	Module: RH WING + FL CTR	A/C Reg :	Check :	 41F4000504
	Oper. : RT-MP LC			
	Type : NDT INSP	Issuer : A59513	Cert.St.: 46928	Page 6 of 7
Spec. : NDT INSP	Release Date: 24.11.2005			

RH WING LWR SURF HFEC INSP

2. Refuel tank.

MAINT	RII/INSP

sabena B707	Module: RH WING + FL CTR	A/C Reg :	Check :	 41F4000504 Page 7 of 7
	Oper. : RT-MP LC			
	Type : NDT INSP	Issuer : A59513	Cert.St.: 46928	
	Spec. : NDT INSP	Release Date: 24.11.2005		

RH WING LWR SURF HFEC INSP

MAINT RII/INSP

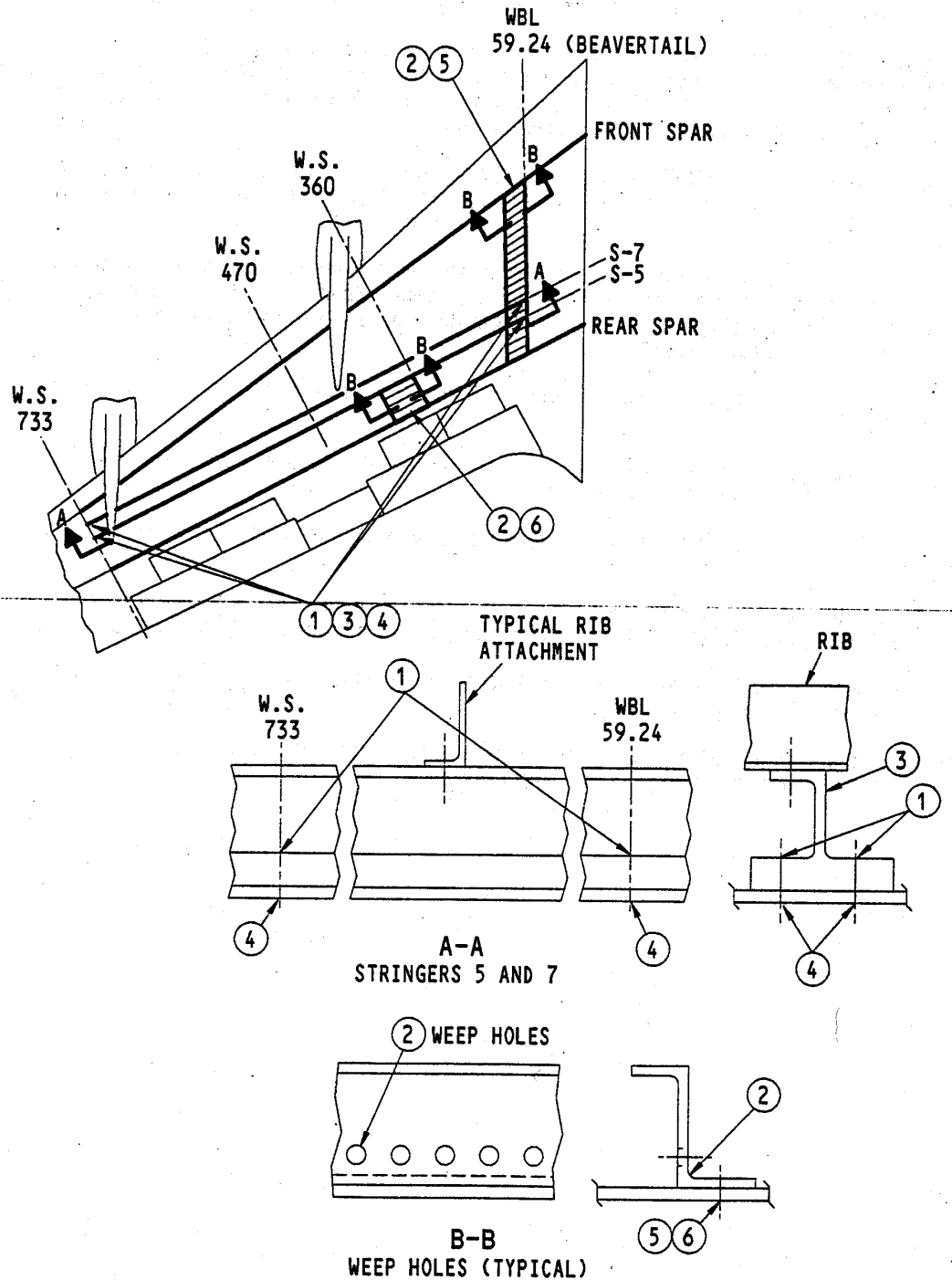


FIGURE 2. 707 SERIES INSPECTIONS OF WING LOWER SKIN AND STRINGERS