



sabena [®] B707	Module: RH WING + FL CTR	A/C Reg :	Check :	 41F4000505
	Oper. : RT-MP LC			
	Type : NDT INSP	Issuer : A59513	Cert.St.: 46928	Page 1 of 6
Spec. : NDT INSP	Release Date: 24.11.2005			

RH WING LWR SURF HFEC INSP

Execution / Start Date:	
End Date:	

MAINT	RII/INSP

sabena B707	Module: RH WING + FL CTR	A/C Reg :	Check :	 41F4000505 Page 2 of 6
	Oper. : RT-MP LC	Issuer : A59513	Cert.St.: 46928	
	Type : NDT INSP	Release Date: 24.11.2005		
Spec. : NDT INSP				

RH WING LWR SURF HFEC INSP

					MAINT	RII/INSP	
Nr.	Hardtime	Task	Spec.	Related Documents			
1.	16527 CYC	E4	NDT	AD 81-11-06 R1 rev 4178 MMS-328 570150 02002 rev 15.07.05 SB 57A3395 rev OCT 08/99			
Check: C1							
Zones: 673, 674							
Access: 1325R, 1326R, 1327R, 1328R							
NRC YES <input type="radio"/> NO <input type="radio"/>		IF YES, NUMBER(S):					

PREPARATION FOR INSPECTION:

1. Defuel & purge tank.
2. Remove top internal fairing covering portion of stringers 5 & 7 at approx WS 440.

HFEC INSPECTION OF WING LWR SURFACE STRINGERS S-5 S-7.

DO A HFEC INTERNAL INSPECTION OF WING LOWER SURFACE ALLONG UPPER WEB OF STRINGER S-5 & S-7 UNDERNEATH RIB, AS SHOWN IN SB 3395 FIG 2 FLAGNOT 3, FROM WBL 59.24 TO WS 733 (Refer. Doc. ,D6-48023, PART 6, 57-10-07, FIG 75).

RESTORE AIRPLANE:


1. Install top internal fairing covering portion of stringers 5 & 7 at approx WS 440.
2. Refuel tank.

Nr.	Hardtime	Task	Spec.	Related Documents			
2.	16636 CYC	E4	NDT	AD 81-11-06 R1 rev 4178 MMS-328 570150 02002 rev 15.07.05 SB 57A3395 rev OCT 08/99			
Check: C1							
Zones: 673, 674							
Access: 1325R, 1326R, 1327R, 1328R							
NRC YES <input type="radio"/> NO <input type="radio"/>		IF YES, NUMBER(S):					

PREPARATION FOR INSPECTION:

1. Defuel & purge tank.

RH WING LWR SURF HFEC INSP

sabena B707	Module: RH WING + FL CTR	A/C Reg :	Check :	
	Oper. : RT-MP LC			
	Type : NDT INSP	Issuer : A59513	Cert.St.: 46928	41F4000505
	Spec. : NDT INSP	Release Date: 24.11.2005		Page 3 of 6

RH WING LWR SURF HFEC INSP

MAINT RII/INSP

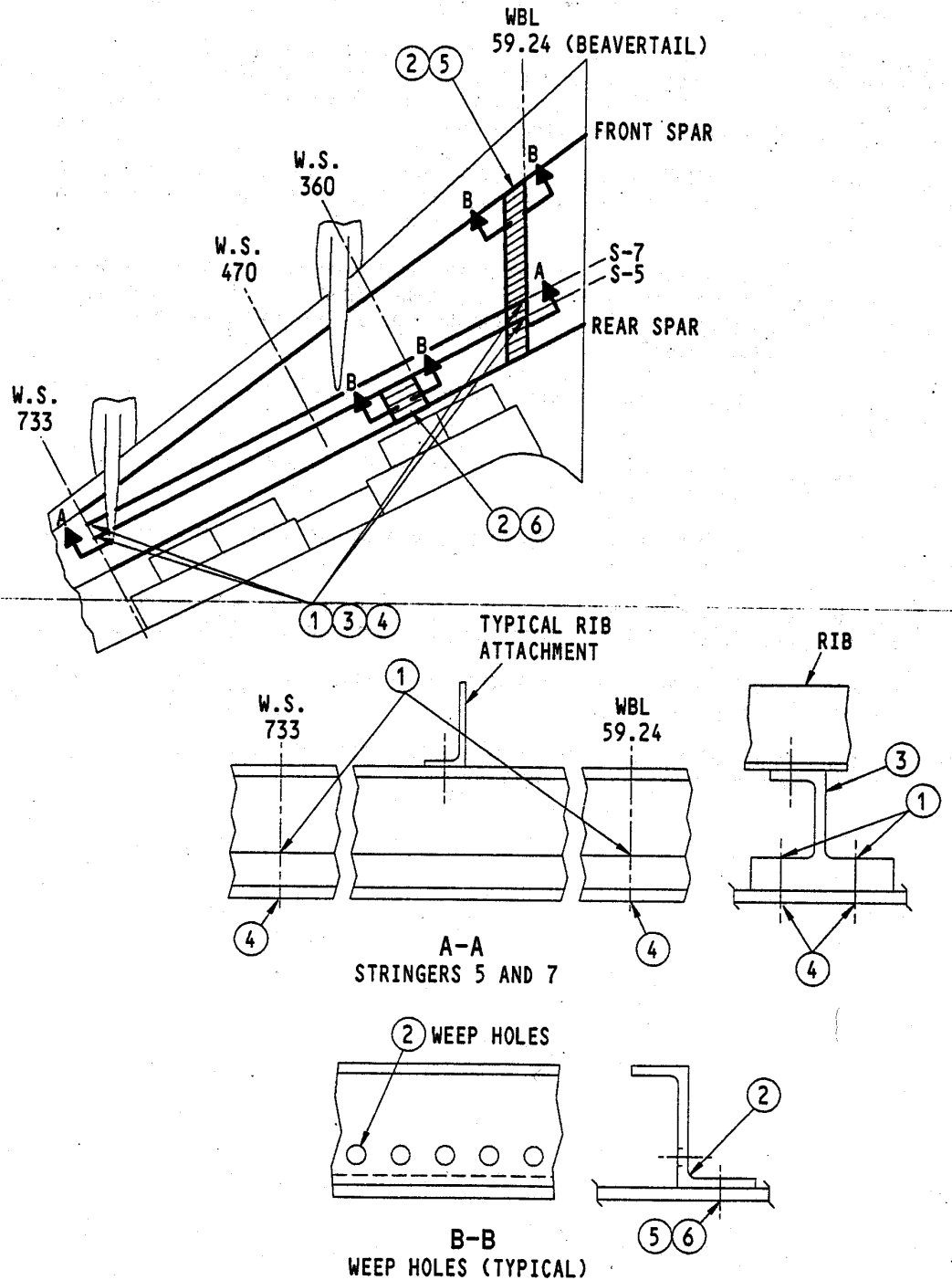



FIGURE 2. 707 SERIES INSPECTIONS OF WING LOWER SKIN AND STRINGERS

sabena B707	Module: RH WING + FL CTR	A/C Reg :	Check :	
	Oper. : RT-MP LC			
	Type : NDT INSP	Issuer : A59513	Cert.St.: 46928	41F4000505
	Spec. : NDT INSP	Release Date: 24.11.2005		Page 5 of 6

RH WING LWR SURF HFEC INSP

MAINT RII/INSP

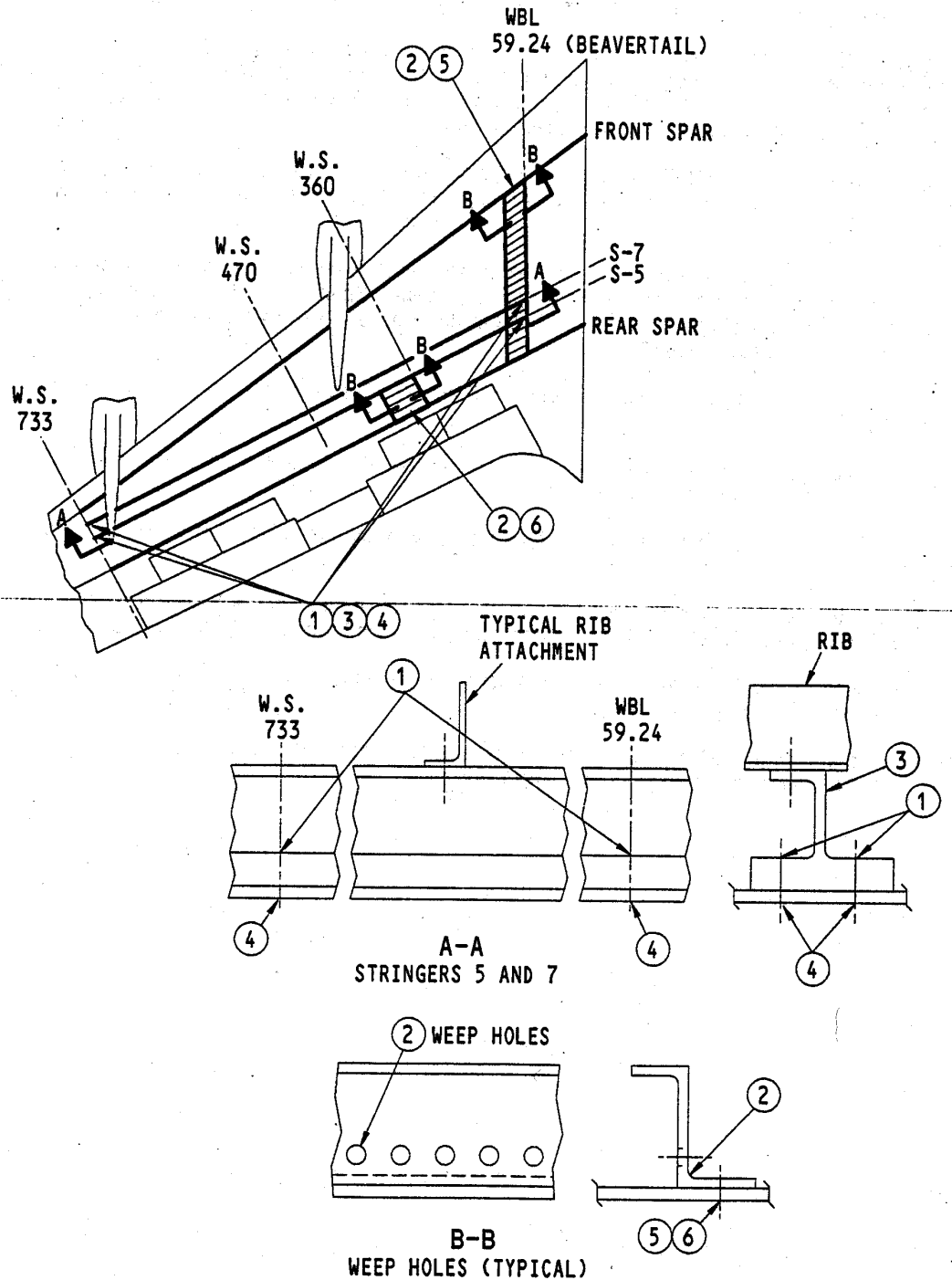



FIGURE 2. 707 SERIES INSPECTIONS OF WING LOWER SKIN AND STRINGERS

sabena B707	Module: RH WING + FL CTR	A/C Reg :	Check :	 41F4000505 Page 6 of 6
	Oper. : RT-MP LC			
	Type : NDT INSP	Issuer : A59513	Cert.St.: 46928	
	Spec. : NDT INSP	Release Date: 24.11.2005		

RH WING LWR SURF HFEC INSP

MAINT RII/INSP

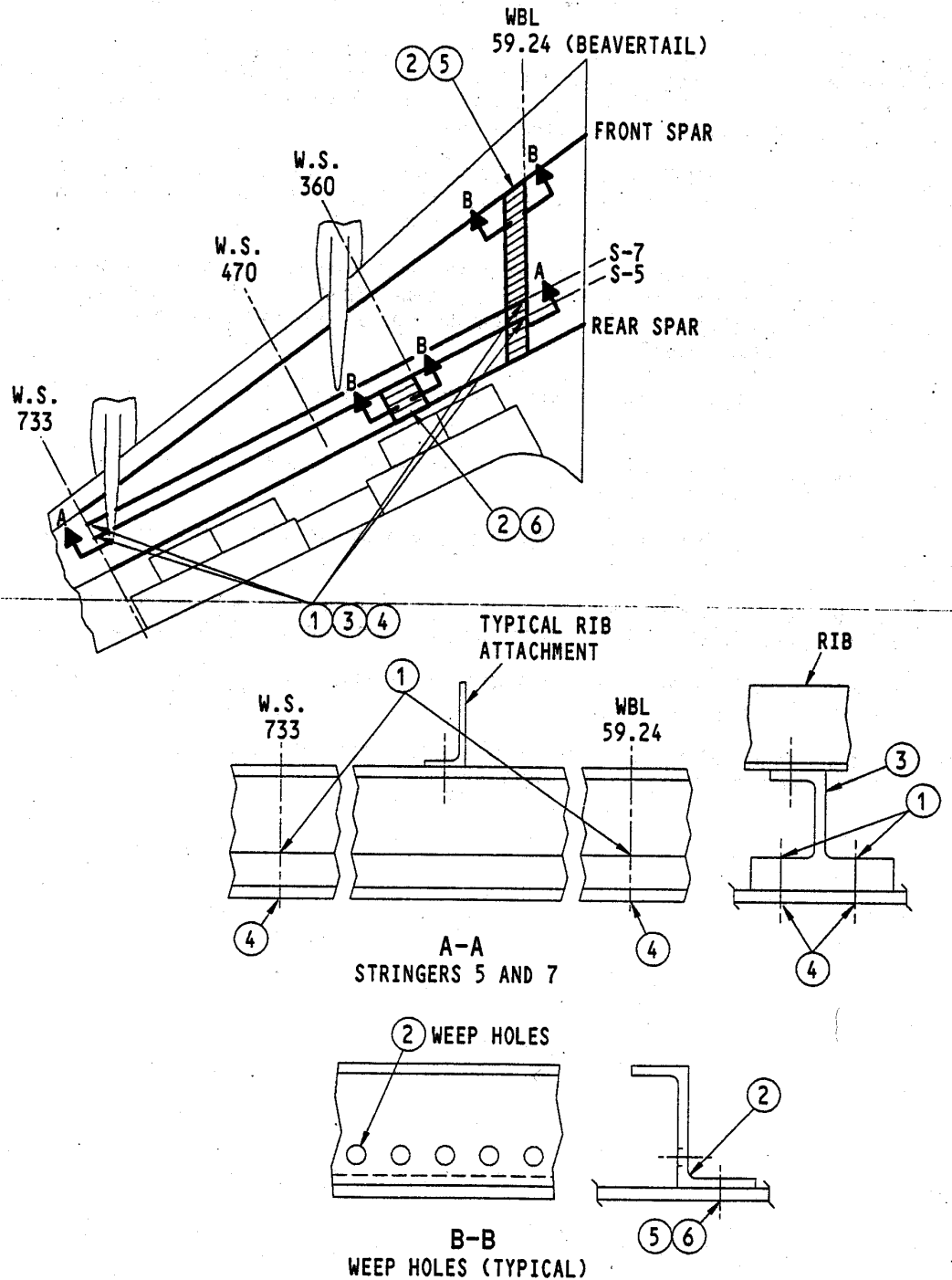


FIGURE 2. 707 SERIES INSPECTIONS OF WING LOWER SKIN AND STRINGERS