


<b>sabena</b> <b>B707</b>	Module: RH WING + FL CTR	A/C Reg :	Check :	
	Oper. : RT-MP LC			
	Type : *LUBE*	Issuer : A43710	Cert.St.: 24828	41I0000512
Spec. : MECHANIC	Release Date: 16.10.2001		Page 1 of 9	


**RH WING TE FLAP OPER MECH LUB**

Execution / Start Date:	
End Date:	

**MAINT**      **RII/INSP**

Pos	Mat. Type	P/N	IDN	Description	Qty	Unit
1	FL & CH	MIL-G-23827	896275	BMS 3-33	0.00	
1	FL & CH	MIL-L-7808		OIL	0.00	

**RH WING TE FLAP OPER MECH LUB**

<b>sabena</b> <b>B707</b>	Module: RH WING + FL CTR	A/C Reg :	Check :	 <b>41I0000512</b> <b>Page 2 of 9</b>
	Oper. : RT-MP LC			
	Type : *LUBE*	Issuer : A43710	Cert.St.: 24828	
	Spec. : MECHANIC	Release Date: 16.10.2001		

**RH WING TE FLAP OPER MECH LUB**

					MAINT	RII/INSP
Nr.	Hardtime	Task	Spec.	Related Documents		
1.		S	MEC	MMS-328 275008 00102 rev 15/05/01		
<b>Check: C1</b>						
<b>Zones:</b>						
<b>Access:</b>						
<b><u>RH WING TE FLAP OPERATING MECHANISM LUBRICATION.</u></b>						
<b>1. All flap support fittings.</b>						
– Apply MIL-G-23827 to flush fittings (2 places each fitting).						
<b>2. All flap carriages.</b>						
– Apply MIL-G-23827 to flush fittings (10 places each carriage).						
<b>3. Inboard and outboard transmission assemblies.</b>						
– Flap transmission assembly trunio support (MIL-G-23827).						
– Fill jackscrews to level of filler plug with, a mix of one part MIL-G-23827 and four part MIL-G-7808. <b>See table for quantity level limits.</b>						
– Lubricate ballnut (MIL-G-23827).						
<b>PERFORMED ON:</b> – INB FLAP INB TRANSM.						
– INB FLAP OUTB TRANSM.						
– OUTB FLAP INB TRANSM.						
– OUTB FLAP OUTB TRANSM.						
<b>4. Inb and outb flap angle and tee gearboxes.</b>						
– Fill to level of filler plug with, a mix of one part MIL-G-23827 and four part MIL-G-7808. <b>See table for quantity level limits.</b>						
<b>PERFORMED ON:</b> – OUTB AIL LOCKOUT GEARBOX.						
– OUTB FLAP ANGLE GEARBOX.						
– RH OUTB FLAP ANGLE GEARBOX.						
– INB FLAP GEARBOX.						
– INB FLAP ELL GEARBOX.						
– INB FLAP ANGLE GEARBOX.						
<b>5. Flap torque tube couplings lubrication.</b>						
– Disconnect torque tube couplings.						
– Clean and apply a light film of MIL-G-23827.						
– Reconnect torque tube coupling.						
– DOUBLE CHECK.						

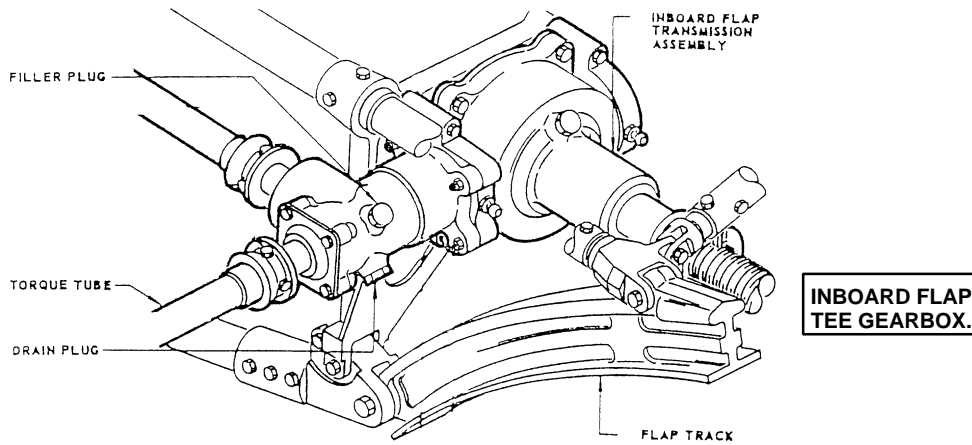
**RH WING TE FLAP OPER MECH LUB**

**RH WING TE FLAP OPER MECH LUB**


*PLEASE NOTE WHEN FILLED QUANTITY PASSES 70% OF THE TOTAL QUANTITY.*

<b>MAINT</b>	<b>RII/INSP</b>
--------------	-----------------

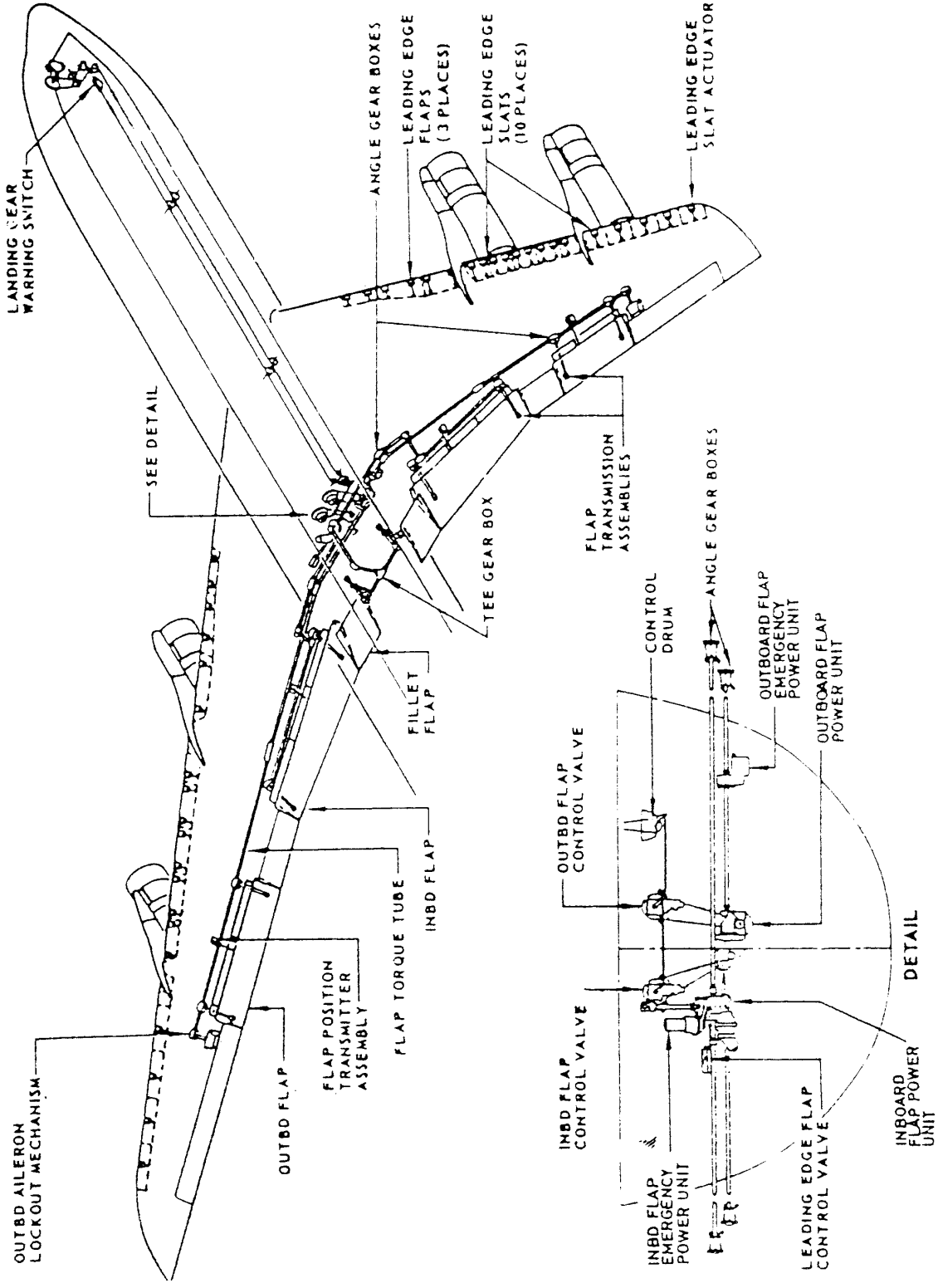
	SAB Nr.	TOTAL QUANTITY	MAX REFILL ADMITED 70%	FILLED QUANTITY.
OUTB AIL LOCKOUT GEARBOX.	737R.	400 CC.	280 CC.	CC.
OUTB FLAP OUTB JACKSCREW.	737H.	340 CC.	238 CC.	CC.
OUTB FLAP INB JACKSCREW.	737G.	340 CC.	238 CC.	CC.
OUTB FLAP ANGLE GEARBOX.	737E.	140 CC.	98 CC.	CC.
RH OUTB FLAP ANGLE GEARBOX.	737BF.	150 CC.	105 CC.	CC.
INB FLAP OUTB JACKSCREW.	737BD	900 CC.	630 CC.	CC.
INB FLAP INB JACKSCREW.	737BD	900 CC.	630 CC.	CC.
INB FLAP ELL GEARBOX.	737BJ	420 CC.	294 CC.	CC.
INB FLAP ANGLE GEARBOX.	737BH	220 CC.	154 CC.	CC.



Inboard Flap Tee Gear Box


<b>sabena</b> <b>B707</b>	Module: RH WING + FL CTR	A/C Reg :	Check :	 41I0000512 Page 4 of 9
	Oper. : RT-MP LC	Issuer : A43710	Cert.St.: 24828	
	Type : *LUBE*	Release Date: 16.10.2001		
Spec. : MECHANIC				

**RH WING TE FLAP OPER MECH LUB**

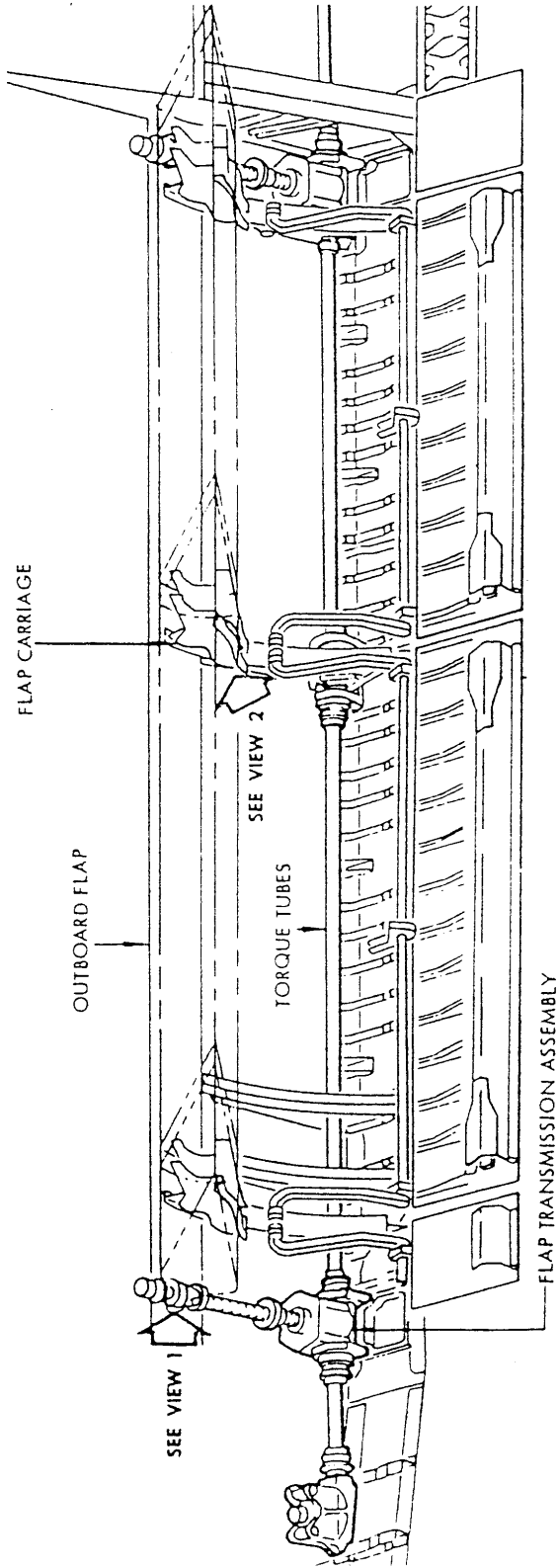


**B 707 - 329.C. WING FLAP CONTROL SYSTEM**

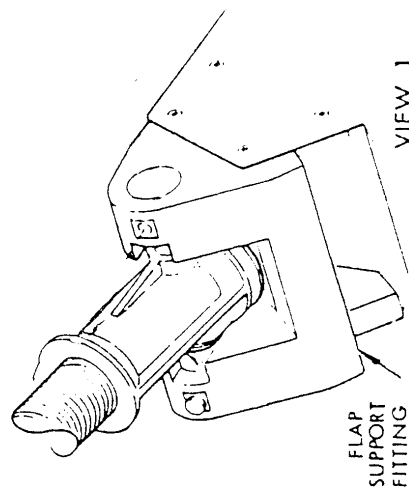
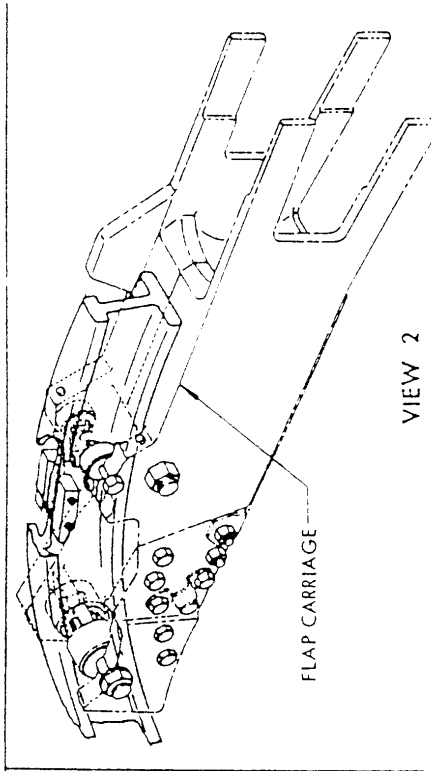
**MAINT RII/INSP**

<b>sabena</b> B707	Module: RH WING + FL CTR	A/C Reg :	Check :	
	Oper. : RT-MP LC	Issuer : A43710	Cert.St.: 24828	
	Type : *LUBE*	Release Date: 16.10.2001	Page 5 of 9	
Spec. : MECHANIC				


**RH WING TE FLAP OPER MECH LUB**



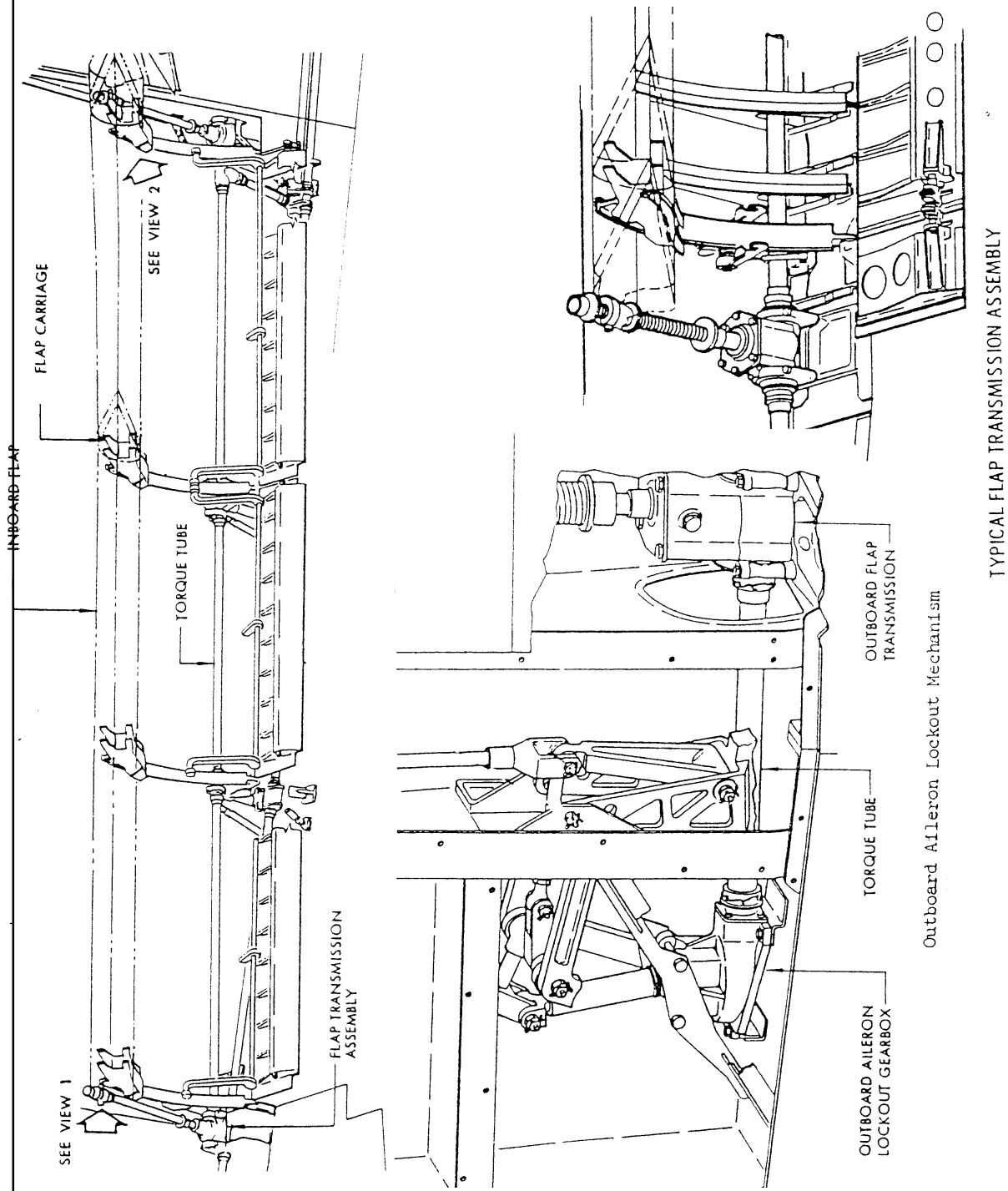
Outboard Wing Flap




MAINT	RII/INSP
-------	----------

<b>sabena</b> <b>B707</b>	Module: RH WING + FL CTR	A/C Reg :	Check :	 <b>4110000512</b> <b>Page 6 of 9</b>
	Oper. : RT-MP LC	Issuer : A43710	Cert.St.: 24828	
	Type : *LUBE*	Release Date: 16.10.2001		
	Spec. : MECHANIC			

**RH WING TE FLAP OPER MECH LUB**

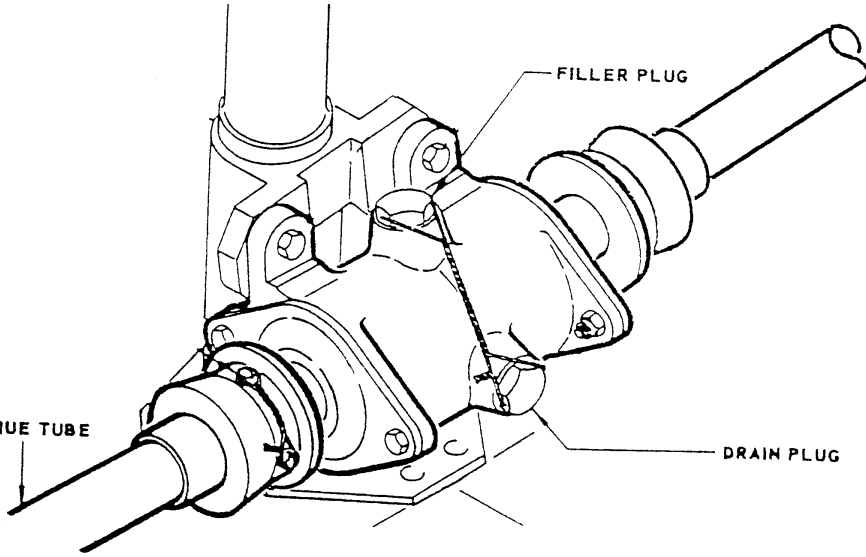


**MAINT      RII/INSP**

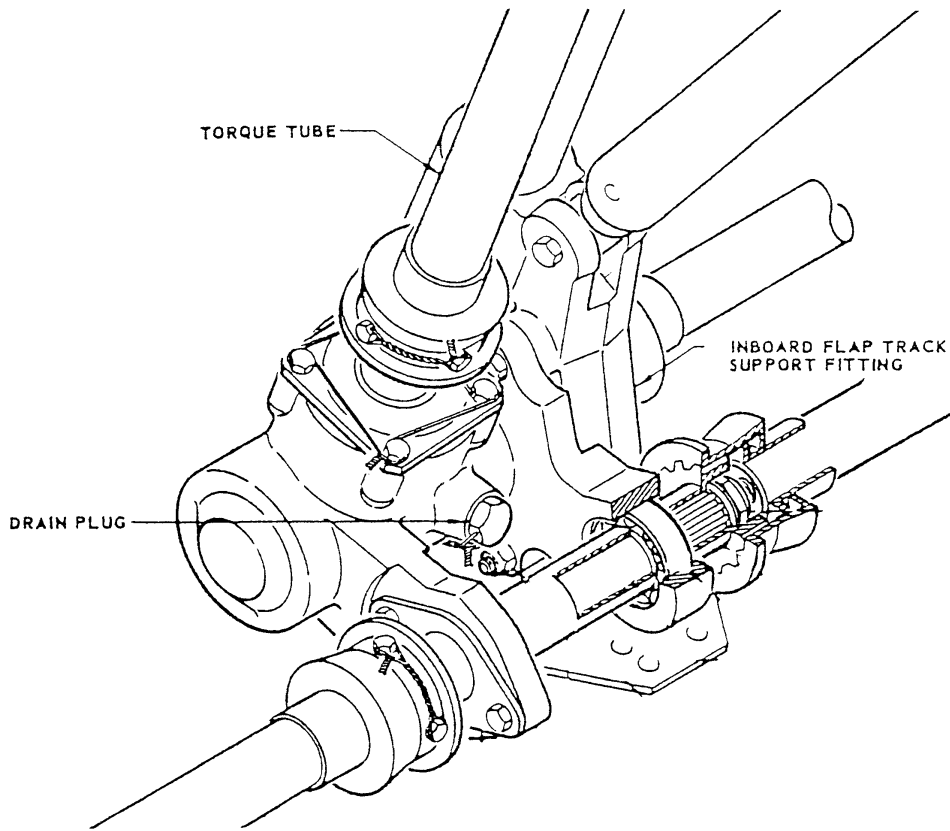
<b>sabena</b> B707	Module: RH WING + FL CTR	A/C Reg :	Check :	 4110000512
	Oper. : RT-MP LC			
	Type : *LUBE*	Issuer : A43710	Cert.St.: 24828	Page 7 of 9
Spec. : MECHANIC	Release Date: 16.10.2001			

**RH WING TE FLAP OPER MECH LUB**

MAINT	RII/INSP




Outboard Flap Angle Gearbox



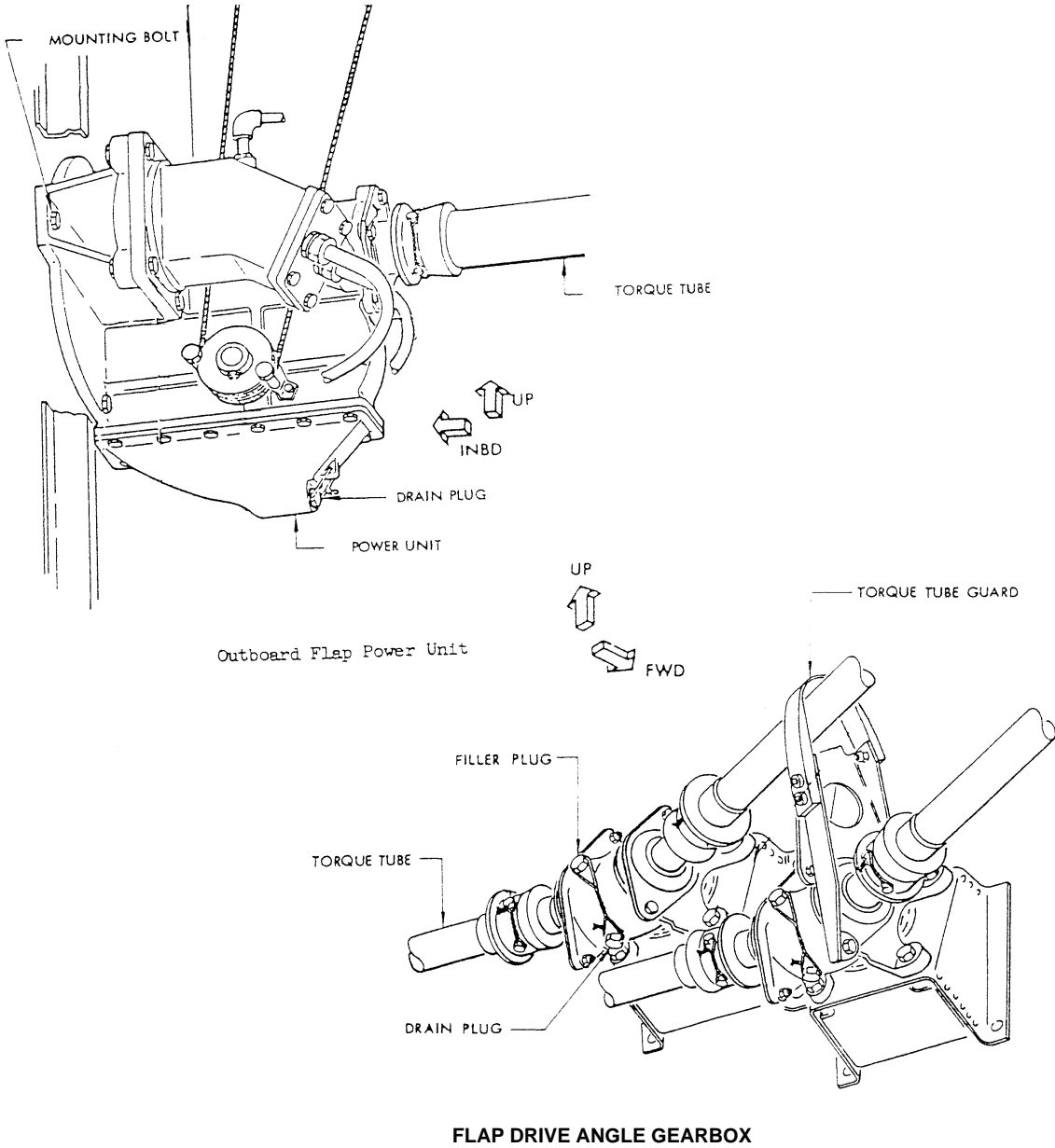
Inboard Flap Elt Gear Box


**RH WING TE FLAP OPER MECH LUB**

<b>sabena</b> B707	Module: RH WING + FL CTR	A/C Reg :	Check :	 4110000512
	Oper. : RT-MP LC	Issuer : A43710	Cert.St.: 24828	
	Type : *LUBE*	Release Date: 16.10.2001	Page 8 of 9	
Spec. : MECHANIC				

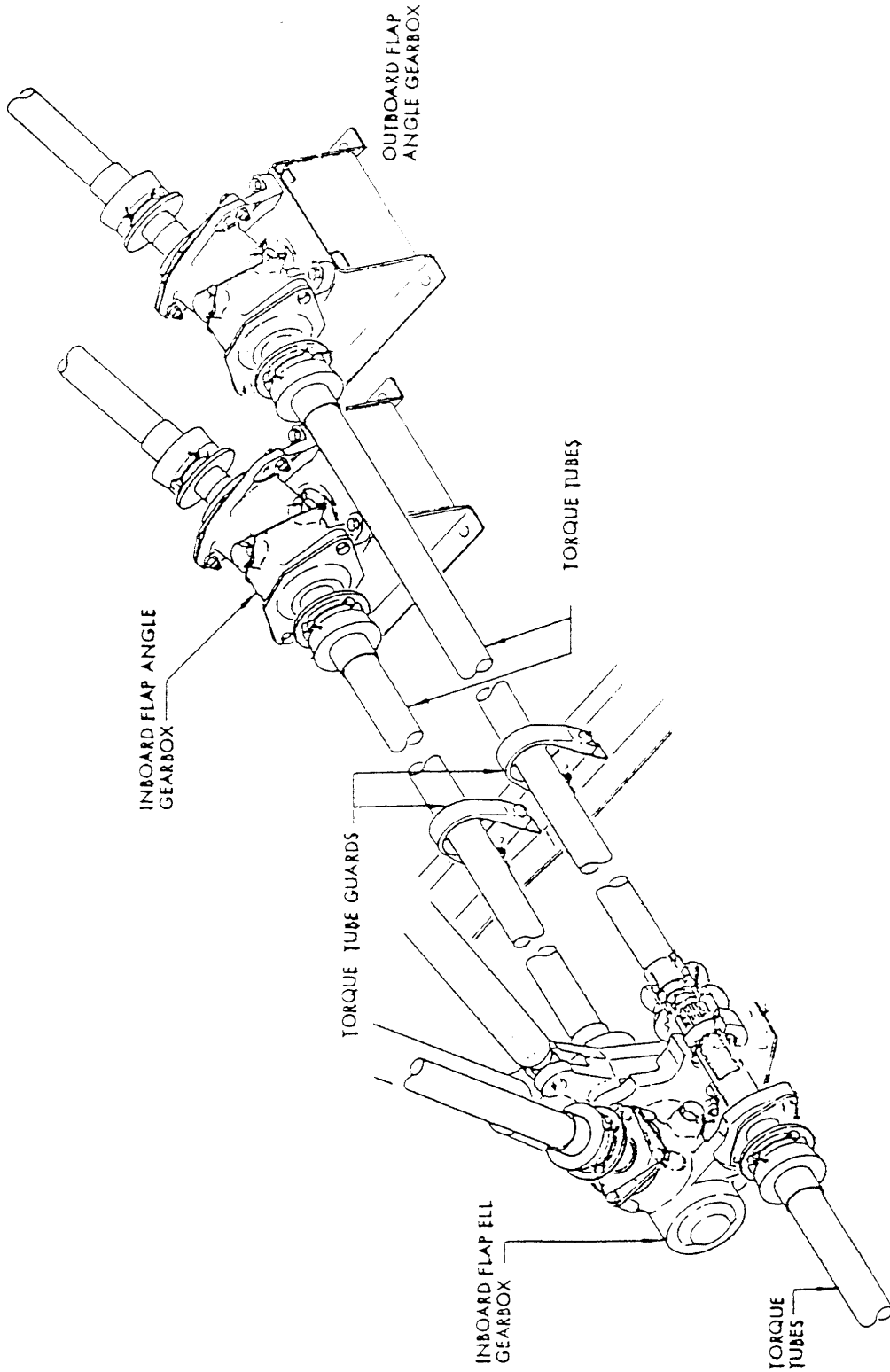
**RH WING TE FLAP OPER MECH LUB**

MAINT	RII/INSP



<b>sabena</b> B707	Module: RH WING + FL CTR	A/C Reg :	Check :	 4110000512
	Oper. : RT-MP LC	Issuer : A43710	Cert.St.: 24828	
	Type : *LUBE*	Release Date: 16.10.2001	Page 9 of 9	
Spec. : MECHANIC				

**RH WING TE FLAP OPER MECH LUB**



Typical Flap Torque Tube Installation

MAINT	RII/INSP
-------	----------