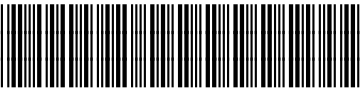



sabena [®] B707	Module: HOR STAB + FL CT	A/C Reg :	Check :	 61F400001
	Oper. : RT-MP LC			
	Type : NDT INSP	Issuer : A59513	Cert.St.: 50516	Page 1 of 4
Spec. : NDT INSP	Release Date: 11.05.2011			

LH STAB REAR SPAR UPPER CHORD INSPECTION

Execution / Start Date:	
End Date:	

MAINT	RII/INSP


sabena B707	Module: HOR STAB + FL CT	A/C Reg :	Check :	
	Oper. : RT-MP LC			
	Type : NDT INSP	Issuer : A59513	Cert.St.: 50516	61F400001
Spec. : NDT INSP	Release Date: 11.05.2011		Page 2 of 4	

LH STAB REAR SPAR UPPER CHORD INSPECTION

					MAINT	RII/INSP	
Nr.	Hardtime	Task	Spec.	Related Documents			
1.		E4	NDT	MMS-328 551190 01001 rev 01/11/10			
Check: B							
Zones: 391							
Access:							
NRC YES <input type="radio"/> NO <input type="radio"/>		IF YES, NUMBER(S):					

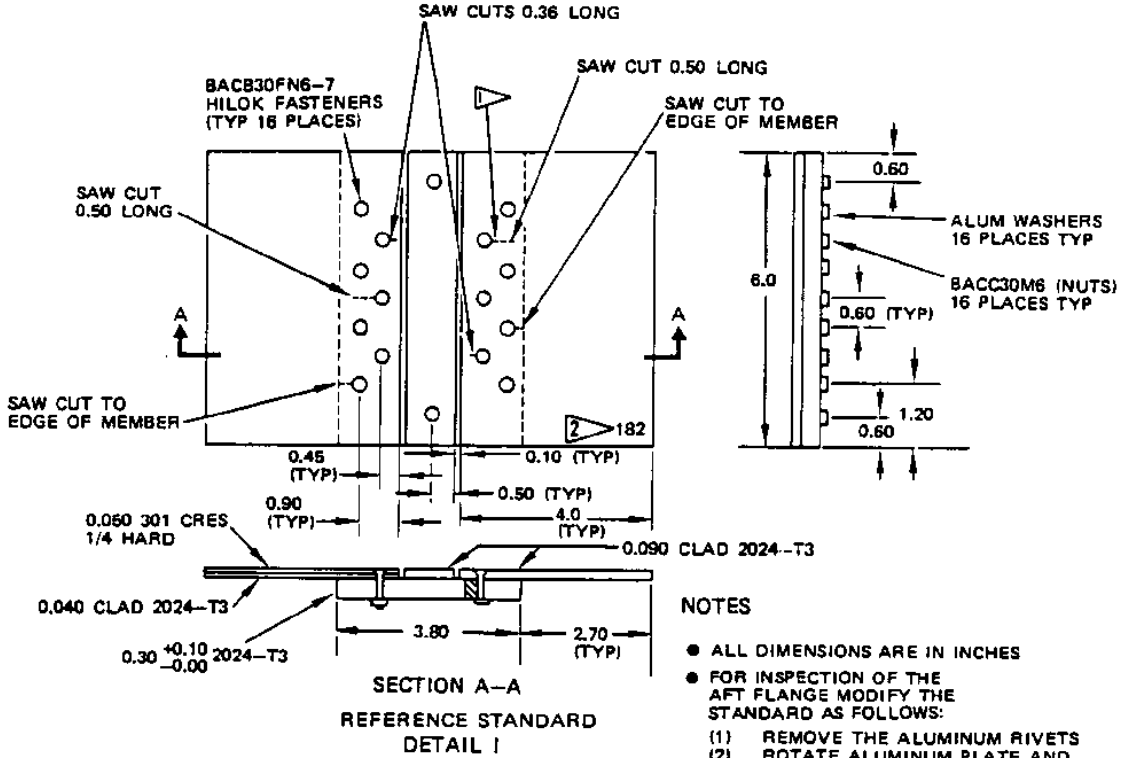
PERFORM HFEC INSPECTION ON LH STABILIZER REAR SPAR UPPER CHORD AFT FLANGE LOWER SURFACE.

1. Wipe stabilizer surface clean.
2. Paint removal is not required for inspection but local paint removal may be necessary to locate fasteners.
3. Perform HFEC inspection on LH stabilizer rear spar upper chord aft flange lower surface as given in 707 NDT part 6, 55-10-07, Figure 8 between elevator hinge ribs at ESTA 70.38 & ESTA 115.18.
This inspection was requested by Boeing due to crack repair in this area.
See NCR CG-00063.
4. In case of paint removal, repaint fasteners.

sabena B707	Module: HOR STAB + FL CT	A/C Reg :	Check :	 61F400001 Page 3 of 4
	Oper. : RT-MP LC	Issuer : A59513	Cert.St.: 50516	
	Type : NDT INSP	Release Date: 11.05.2011		
	Spec. : NDT INSP			

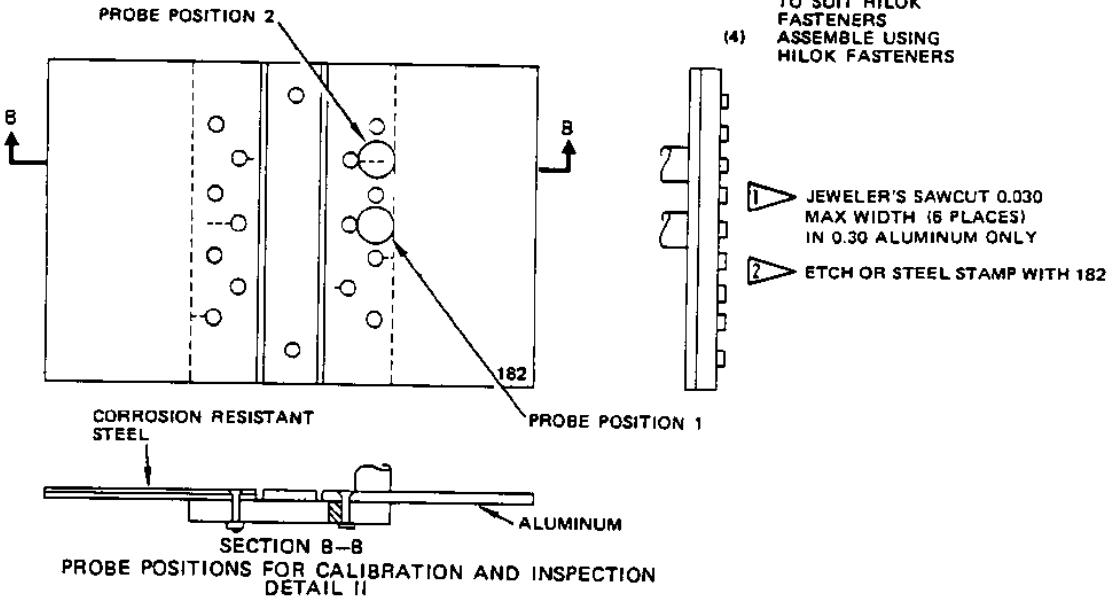
LH STAB REAR SPAR UPPER CHORD INSPECTION

MAINT RII/INSP

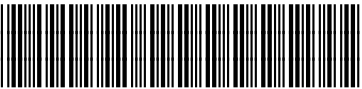


NOTES

- ALL DIMENSIONS ARE IN INCHES
- FOR INSPECTION OF THE AFT FLANGE MODIFY THE STANDARD AS FOLLOWS:
 - (1) REMOVE THE ALUMINUM RIVETS
 - (2) ROTATE ALUMINUM PLATE AND DRILL NEW HOLES TO MATCH EXISTING HOLES IN LOWER PLATE
 - (3) COUNTERSINK HOLES TO SUIT HILOK FASTENERS
 - (4) ASSEMBLE USING HILOK FASTENERS

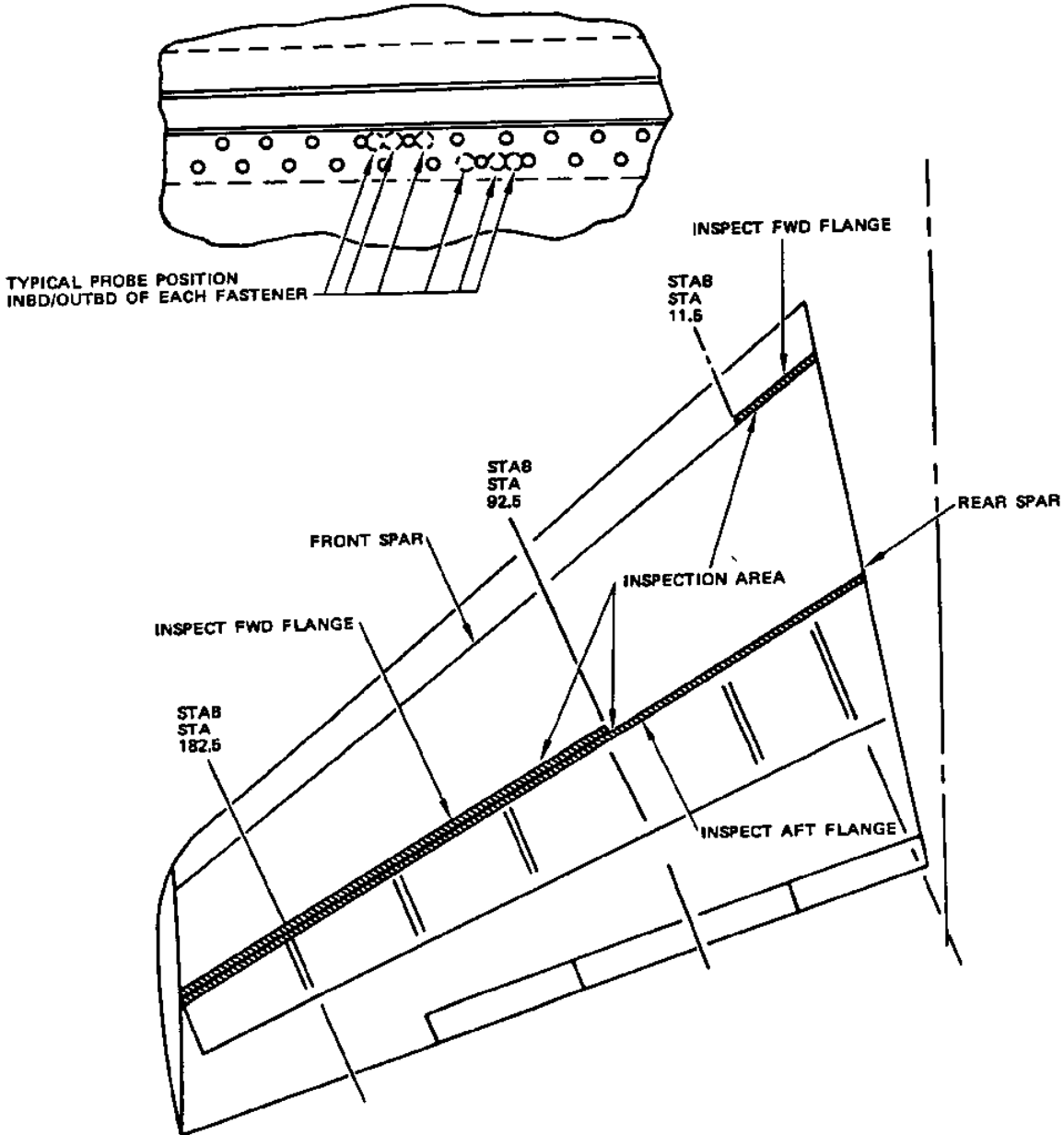


Horizontal Stabilizer Upper and Lower Forward and Rear Spar Chord Flanges
Figure 8 (Sheet 4) Part 6

sabena B707	Module: HOR STAB + FL CT	A/C Reg :	Check :	
	Oper. : RT-MP LC			
	Type : NDT INSP	Issuer : A59513	Cert.St.: 50516	61F400001
	Spec. : NDT INSP	Release Date: 11.05.2011		Page 4 of 4

LH STAB REAR SPAR UPPER CHORD INSPECTION

MAINT	RII/INSP
-------	----------



DETAIL III INSPECTION AREA

Horizontal Stabilizer Upper and Lower Forward and Rear Spar Chord Flanges
Figure 8 (Sheet 5)

LH STAB REAR SPAR UPPER CHORD INSPECTION