



<b>sabena</b> <sup>®</sup> <b>B707</b>	Module: NLG WW + DOORS	A/C Reg :	Check :	 <b>G4G2000001</b>
	Oper. : NRT			
	Type : MODIF	Issuer : A59513	Cert.St.: 45379	
Spec. : MECHANIC	Release Date: 05.12.2007		Page 1 of 6	

**DFW B707-32-0003                      INSTALLATION OF ALUMINIUM BRONZE BRAKE LINING**

		MAINT	RII/INSP
Execution / Start Date:			
End Date:			

<b>sabena</b> B707	Module: NLG WW + DOORS	A/C Reg :	Check :	 <b>G4G2000001</b>
	Oper. : NRT	Issuer : A59513	Cert.St.: 45379	
	Type : MODIF	Release Date: 05.12.2007	Page 2 of 6	
Spec. : MECHANIC				

**DFW B707-32-0003                      INSTALLATION OF ALUMINIUM BRONZE BRAKE LINING**

					<b>MAINT</b>	<b>RII/INSP</b>
<b>Nr.</b>	<b>Hardtime</b>	<b>Task</b>	<b>Spec.</b>	<b>Related Documents</b>		
1.			MEC	DFW B707-32-0003 rev 05 DEC 06		
<b>Check:</b>						
<b>Zones:</b>						
<b>Access:</b>						
NRC YES <input type="radio"/> NO <input type="radio"/>		IF YES, NUMBER(S):				

**NOSE GEAR WHEEL SNUBBER BRAKE LINING (LH, RH), INSTALLATION OF ALUMINIUM BRONZE BRAKE LINING INSTEAD OF ASBESTOS**

**1. Remove Nose Gear Wheel Snubbers**

***Note:*** Two persons are required to remove snubbers.

- 1.1 Ensure that nose and main gear downlocks are installed.
- 1.2 Ensure that nose wheel well doors are open and secured.
- 1.3 Remove nuts, washers and fillers and remove snubbers (see fig.1)

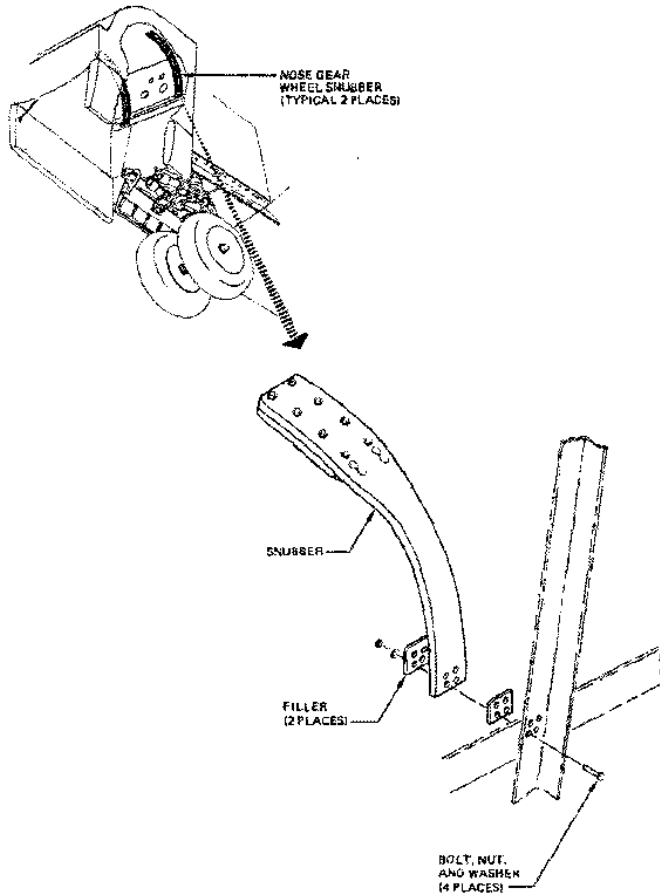



Fig. 1 Nose Gear Wheel Snubber Removal/Installation

<b>sabena</b> <b>B707</b>	Module: NLG WW + DOORS	A/C Reg :	Check :	 <b>G4G2000001</b>
	Oper. : NRT	Issuer : A59513	Cert.St.: 45379	
	Type : MODIF	Release Date: 05.12.2007	Page 3 of 6	
Spec. : MECHANIC				

DFW B707-32-0003

INSTALLATION OF ALUMINIUM BRONZE BRAKE LINING

**Note:** Bolts are accessible on station 312 bulkhead in lower forward compartment 1.5 to 2.0 feet from the floor; left and right snubber bolts are located as shown in fig. 2 (attention front view!)

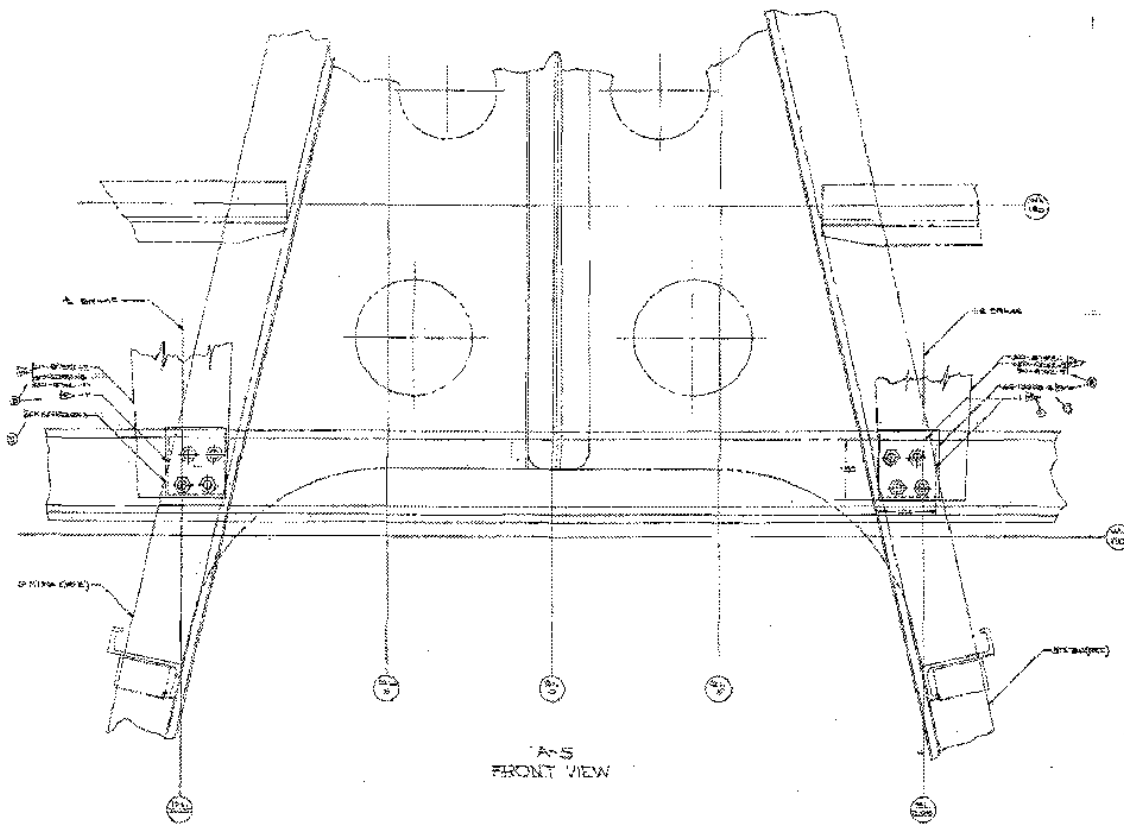


Fig. 2 Location of Snubber Bolts, Front View

**2. Remove Lining**

- 2.1 If brake lining is riveted to snubber, drill out rivets and remove lining (if bolts are installed remove bolts, washers and nuts)


**Note:** *If replacing asbestos lining with aluminum bronze, drill out six rivets from block and remove block.*

- 2.2 If lining has raised part number, grind off flush with face of lining.

MAINT RII/INSP

DFW B707-32-0003

INSTALLATION OF ALUMINIUM BRONZE BRAKE LINING

<b>sabena</b> B707	Module: NLG WW + DOORS	A/C Reg :	Check :	
	Oper. : NRT			
	Type : MODIF	Issuer : A59513	Cert.St.: 45379	G4G2000001
	Spec. : MECHANIC	Release Date: 05.12.2007		Page 4 of 6

DFW B707-32-0003

INSTALLATION OF ALUMINIUM BRONZE BRAKE LINING

MAINT	RII/INSP
-------	----------

3. Prepare Aluminum Bronze Brake Lining installation

- 3.1 Using nose gear wheel snubber as a guide, drill holes in lining, follow detailed instructions at fig. 3, fig. 4 (extracts of drawing 50-8792, sheet I , frame 1)
- 3.2 Protect reworked surfaces with alodine per SRM 51-8-1.

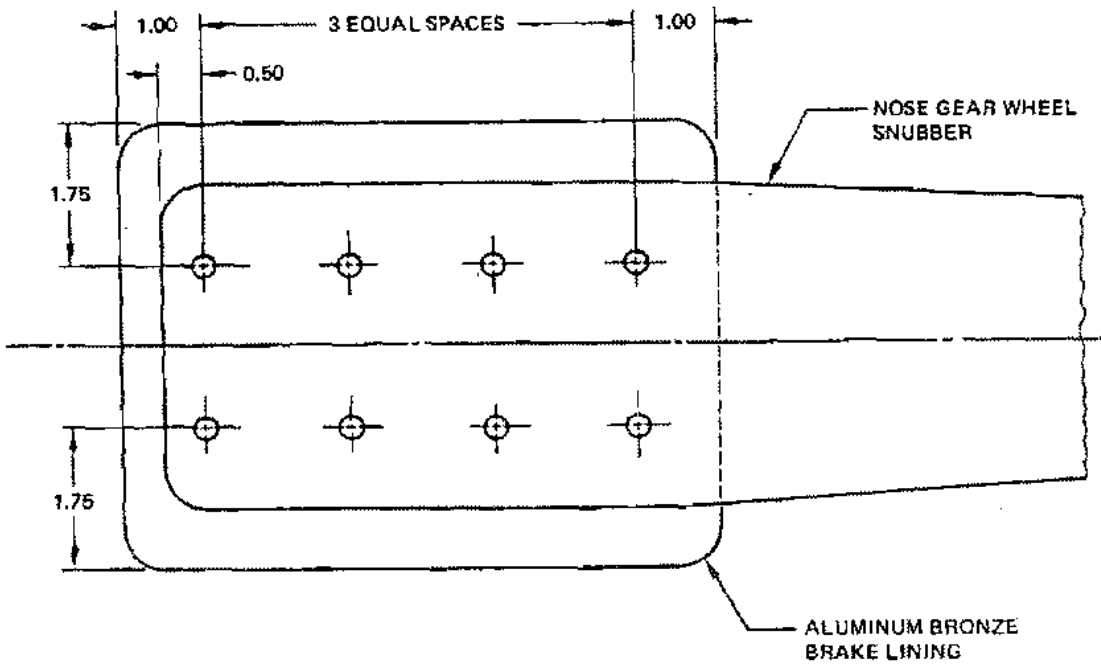



Fig. 3: Details on bore holes, rear view (dimensions in inches)

4. Installation of Aluminum Bronze Brake Lining PIN 69-24362-1

- 4.1 Position brake lining on snubber, install bolts and nuts (see fig. 4)
- 4.2 Install snubber (see fig. 5)

DFW B707-32-0003

INSTALLATION OF ALUMINIUM BRONZE BRAKE LINING

<b>sabena</b> <b>B707</b>	Module: NLG WW + DOORS	A/C Reg :	Check :	 <b>G4G2000001</b>
	Oper. : NRT	Issuer : A59513	Cert.St.: 45379	
	Type : MODIF	Release Date: 05.12.2007	Page 5 of 6	
Spec. : MECHANIC				

DFW B707-32-0003

INSTALLATION OF ALUMINIUM BRONZE BRAKE LINING

MAINT      RII/INSP

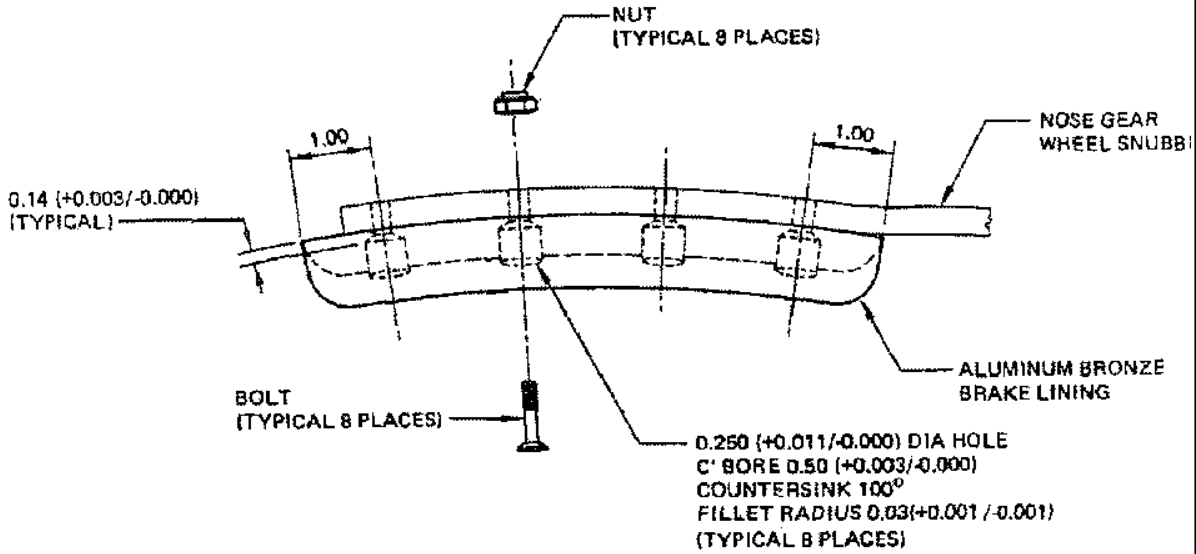


Fig. 4: Details on bore holes , side view (dimensions in inches)

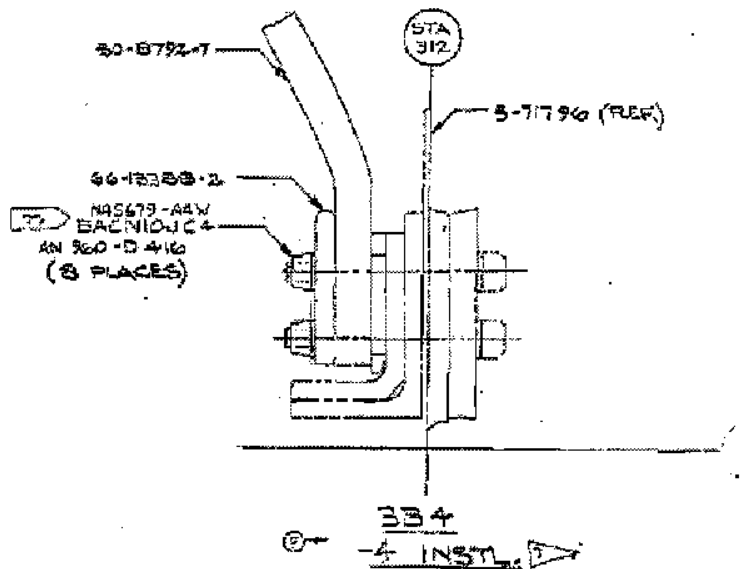


Fig. 5: Snubber Installation

DFW B707-32-0003

INSTALLATION OF ALUMINIUM BRONZE BRAKE LINING

