


sabena B707	Module: MLG / CLG	A/C Reg :	Check :	 H4G2000001 Page 2 of 5
	Oper. : NRT	Issuer : A59513	Cert.St.: 45379	
	Type : MODIF	Release Date: 05.12.2007		
Spec. : SHEET METAL				


DFW B707-53-509 MLG W.W. BS 960 FAIRING ACCESS PANEL MODIFICATION

					MAINT	RII/INSP
Nr.	Hardtime	Task	Spec.	Related Documents		
1.			TOL	DFW B707-53-509 rev 15 JAN 07		
Check:						
Zones:						
Access:						
NRC YES <input type="radio"/> NO <input type="radio"/>		IF YES, NUMBER(S):				

LH MLG W/W/ BS 960 FAIRING ACCESS PANEL MODIFICATION


Modification instructions

- Remove existing LH side Round Cover Assy's shown in Fig.1 (Ref. IPB 53-07-7 item 8).
Note : *location of the Screws and retain them for reinstallation. Visually inspect nutplates installed along the cutout for general conditions and replace as required per SRM 51 -2-2.*
- Manufacture 2ea. Fairing Covers out of a sheet from 2024T3 AlClad 0.040 in.thk. per SAE AMS QQ-A-2506.
Shape new Fairing Covers as the removed ones except for the latch door cutout that need not be performed. See Fig.1 item 4.
Follow BAC5300 requirements when shaping and forming aluminum sheet. Anodize Fairing Covers per MIL-A-8625 and apply 2ea. coats of MIL-PRF- 23377 epoxy primer per MM 51-90-00.
Identify Covers as PIN DWF-B707-53-509-1 for the LH side.
- As an option to the repair per step 2 above, the fairing assy can be reworked by removing and scrapping the latch door and the internal cutout doubler (see Fig.1 items 2 and 3) and a new internal doubler can be manufactured and installed according to SRM 51 -1 4-2 Fig. 1 requirements.
- Install the 2ea. new or reworked Fairing Cover panels on the lower LH BS 960 W/W Fairings using screws retained in step 1. Coat screws thread and shank with Mastinox or CORBAN-27L before reinstalling them in order to prevent corrosion and sizing.
- Refinish area per MM 51-90-00 requirements.

sabena B707	Module: MLG / CLG	A/C Reg :	Check :	
	Oper. : NRT			
	Type : MODIF	Issuer : A59513	Cert.St.: 45379	H4G2000001
	Spec. : SHEET METAL	Release Date: 05.12.2007		Page 3 of 5

DFW B707-53-509 MLG W.W. BS 960 FAIRING ACCESS PANEL MODIFICATION

	MAINT	RII/INSP
<u>RH MLG W/W/ BS 960 FAIRING ACCESS PANEL MODIFICATION</u>		
<u>Modification instructions</u>		
1. Remove existing RH side Round Cover Assy's shown in Fig.1 (Ref. IPB 53-07-7 item 8).		
<u>Note :</u> <i>location of the Screws and retain them for reinstallation.</i> <i>Visually inspect nutplates installed along the cutout for general conditions and replace as required per SRM 51 -2-2.</i>		
2. Manufacture 2ea. Fairing Covers out of a sheet from 2024T3 AlClad 0.040 in.thk. per SAE AMS QQ-A-2506. Shape new Fairing Covers as the removed ones except for the latch door cutout that need not be performed. See Fig.1 item 4. Follow BAC5300 requirements when shaping and forming aluminum sheet. Anodize Fairing Covers per MIL-A-8625 and apply 2ea. coats of MIL-PRF- 23377 epoxy primer per MM 51-90-00. Identify Covers as PIN DWF-B707-53-509-2 for the RH side.		
3. As an option to the repair per step 2 above, the fairing assy can be reworked by removing and scrapping the latch door and the internal cutout doubler (see Fig.1 items 2 and 3) and a new internal doubler can be manufactured and installed according to SRM 51 -1 4-2 Fig. 1 requirements.		
4. Install the 2ea. new or reworked Fairing Cover panels on the lower LHIRH BS 960 W/W Fairings using screws retained in step 1. Coat screws thread and shank with Mastinox or CORBAN-27L before reinstalling them in order to prevent corrosion and sizing.		
5. Refinish area per MM 51-90-00 requirements.		

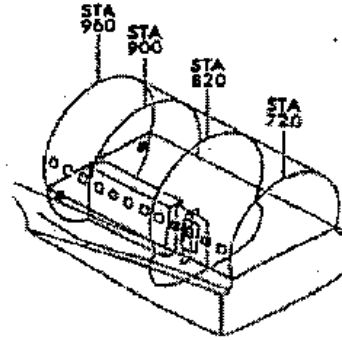
sabena [®] B707	Module: MLG / CLG	A/C Reg :	Check :	
	Oper. : NRT			
	Type : MODIF	Issuer : A59513	Cert.St.: 45379	H4G2000001
Spec. : SHEET METAL	Release Date: 05.12.2007		Page 4 of 5	

DFW B707-53-509

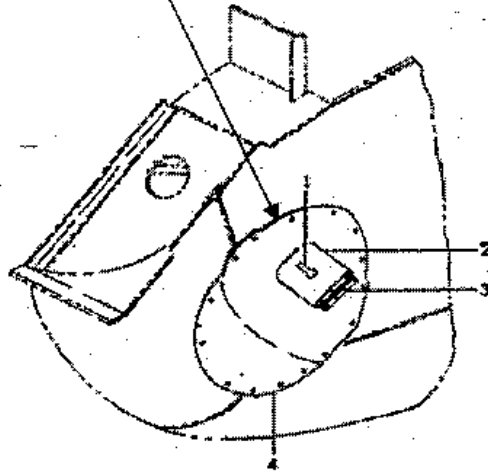
MLG W.W. BS 960 FAIRING ACCESS PANEL MODIFICATION

MAINT


RII/INSP



**Cover Assy to be replaced
by a Blank Panel per Step 2
or
Reworked per Step 3.**



**Fig.1
BS 960 Fairing Access Door Instl.**

sabena B707	Module: MLG / CLG	A/C Reg :	Check :	 H4G2000001 Page 5 of 5
	Oper. : NRT	Issuer : A59513	Cert.St.: 45379	
	Type : MODIF	Release Date: 05.12.2007		
Spec. : SHEET METAL				

DFW B707-53-509 MLG W.W. BS 960 FAIRING ACCESS PANEL MODIFICATION

	ENGINEERING INSTRUCTION	Ref.: DWF B707-53-509 Revision: ATA chap.: 53 Date: 15 Jan.2007 Page: 13 of 14
--	--------------------------------	--

MAINT RII/INSP

Modification/Inspection Order			
From ESEC To: SOR TBD		File:	
		Aircraft/Component: LX-N20199	
Cc: LIBRARY SOR TBD		Subject:	
Accepted:		Ref.: Engineering Instructions DFW B707-53-509	
Schedule: At Convenience		Annex: A/C Occurrence Report 2006/35	
Responsible System Engineer:			
Remarks from Performing Dept:		Remarks from Q.A. Dept:	
		Inspection	Yes <input type="checkbox"/> No <input type="checkbox"/>
		Modification	Yes <input type="checkbox"/> No <input type="checkbox"/>
		Repair	Yes <input type="checkbox"/> No <input type="checkbox"/>
Revision of SB C/W:			
Date:	Signature:	Date:	Signature:

DFW B707-53-509 MLG W.W. BS 960 FAIRING ACCESS PANEL MODIFICATION