



<b>sabena</b> <sup>®</sup> <b>B707</b>	Module: PYLON 1	A/C Reg :	Check :	 <b>S4F2000500</b>
	Oper. : NRT			
	Type : MEC-INSP	Issuer : A59513	Cert.St.: 46928	
Spec. : MECHANIC	Release Date: 29.11.2004		Page 1 of 5	

**SB A3502      NACELLE STRUT OVERWING SUPPORT FITTINGS INSP**

		MAINT	RII/INSP
Execution / Start Date:			
End Date:			

<b>sabena</b> <b>B707</b>	Module: PYLON 1	A/C Reg :	Check :	 <b>S4F2000500</b> Page 2 of 5
	Oper. : NRT	Issuer : A59513	Cert.St.: 46928	
	Type : MEC-INSP	Release Date: 29.11.2004		
Spec. : MECHANIC				

**SB A3502 NACELLE STRUT OVERWING SUPPORT FITTINGS INSP**

					MAINT	RII/INSP
Nr.	Hardtime	Task	Spec.	Related Documents		
1.			MEC	AD 2004-05-14 rev . SB 57-A3502 rev 21.02.2002		
Check: CYC						
Zones:						
Access:						

**LH & RH wings, Inboard & outboard nacelle strut overwing support fitting bolts inspection.**

**REMARK:** On LX-N20199 only the bolt at strut 1 has to be inspected.

a. Gain access to the overwing support fittings & front spar upper chord attachments.

strut 1


strut 2

strut 3

strut 4

b. Determine if the bolts FWD of the wing front spar on nacelle strut overwing support fitting are BACB30US. (bacb30us8 for out side & bacb30us7 for inb side). If the bolts are BACB30US, no further action. If the bolts are not BACB30US, replace the bolts I.A.W. SB3502 Fig 2 instructions.



<b>sabena</b> B707	Module: PYLON 1	A/C Reg :	Check :	
	Oper. : NRT			
	Type : MEC-INSP	Issuer : A59513	Cert.St.: 46928	S4F2000500
	Spec. : MECHANIC	Release Date: 29.11.2004		Page 4 of 5

**SB A3502 NACELLE STRUT OVERWING SUPPORT FITTINGS INSP**

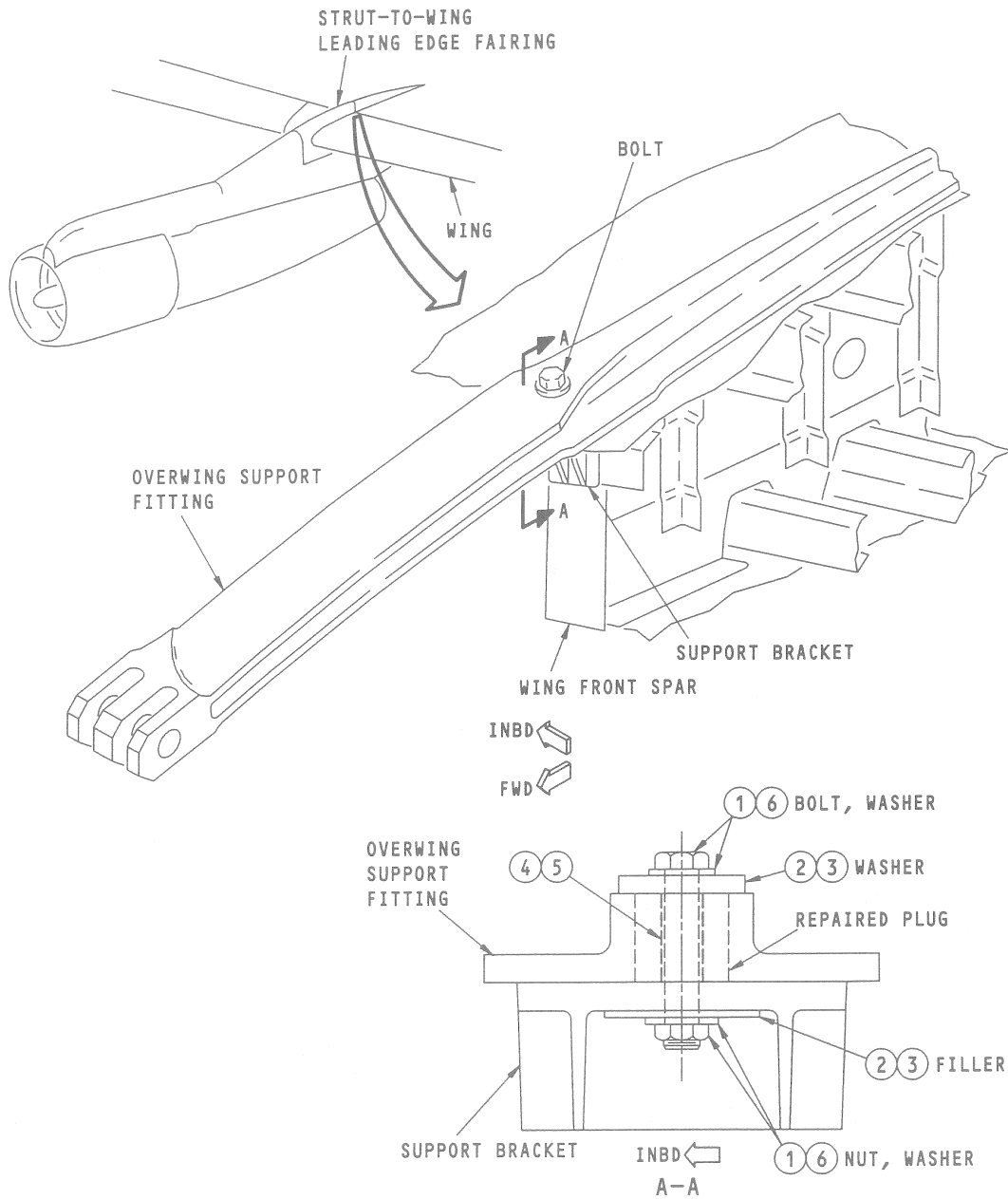



FIGURE 2 OVERWING SUPPORT FITTING BOLT REPLACEMENT

MAINT	RII/INSP

<b>sabena</b> <b>B707</b>	Module: PYLON 1	A/C Reg :	Check :	 <b>S4F2000500</b> <b>Page 5 of 5</b>
	Oper. : NRT	Issuer : A59513	Cert.St.: 46928	
	Type : MEC-INSP	Release Date: 29.11.2004		
Spec. : MECHANIC				

**SB A3502 NACELLE STRUT OVERWING SUPPORT FITTINGS INSP**

STEP	TASK	NAME	PART NUMBER and SPECIFICATION	QTY	NOTES and REFERENCES
1	Remove and discard	Bolt		1	(f)
		washer		2	
		Nut		1	
2	Remove and keep	Washer	1/8 inch thick steel	(e)	(g)
		Filler	8-8112-3093 (outboard only)	1	
3	Install kept	Washer	1/8 inch thick steel	(e)	(g)
		Filler	8-8112-3093 (outboard only)	1	
4	Examine	Hole Bore	High-Frequency Eddy Current	1	(i), 707 NDT Manual Part 6 Subject 51-00-00, Figure 11
5	Measure	Hole Diameter	0.500 - 0.504 inch (outboard)	1	(h), (j)
			0.5620 - 0.5630 inch (outboard)	1	(j) for 09441 only
			0.438 - 0.442 inch (inboard)	1	(h), (j)
			0.7495 - 0.7505 inch (inboard)	1	(j) for 09441 only
6	Install	Bolt	BACB30US8K32 (outboard)	1	(a), (h)
			or BACB30US8K34 (outboard)	1	(a), (h)
			BACB30US8K41 (outboard)	1	(a) for 09441 only
			or BACB30US8K43 (outboard)	1	(a) for 09441 only
		Washer	BACB30US7K30 (inboard)	1	(a), (h)
			or BACD30US7K32 (inboard)	1	(a), (h)
			BACB30US12K41 (inboard)	1	(a) for 09441 only
			or BACB30US12K43 (inboard)	1	(a) for 09441 only
			BACW10BP8CD (outboard)	1	under bolt (h)
		BACW10BP7CD (inboard) *	1	under bolt (h)	
		BACW10BP12CD (inboard)	1	under bolt for 09441 only	
		Washer	BACW10BP8DP (outboard)	1	under nut
			BACW10BP12DP (inboard)	1	under nut for 09441 only
Nut	BACN10HR8CD (outboard)	1	(a), (b)		
	BACN10HR7CD (inboard)	1	(a), (c), (h)		
	BACN10HR12CD (inboard)	1	(a), (d), for 09441 only		

- (a) Apply BMS 5-95 sealant to fasteners then capseal fastener after apply torque to fasteners.
- (b) Torque nut with 630 to 950 Inch-Pounds.
- (c) Torque nut with 370 to 610 Inch-Pounds.
- (d) Torque nut with 2400 to 3100 Inch-Pounds.
- (e) Quantity may be zero or one.
- (f) Quantity may be one in some locations and up to two in other locations.
- (g) For installation with a 1/8 inch thick steel washer located over a repaired support fitting plug only (repaired work done by service bulletin 707-3365).
- (h) For all airplanes except for airplane with variable number 09441.
- (i) If corrosion is found, contact Boeing for corrective action. If cracks are found, contact Boeing for corrective action.
- (j) If hole diameter is not as indicated, contact Boeing for corrective action.

**SB3502 FIG 2**