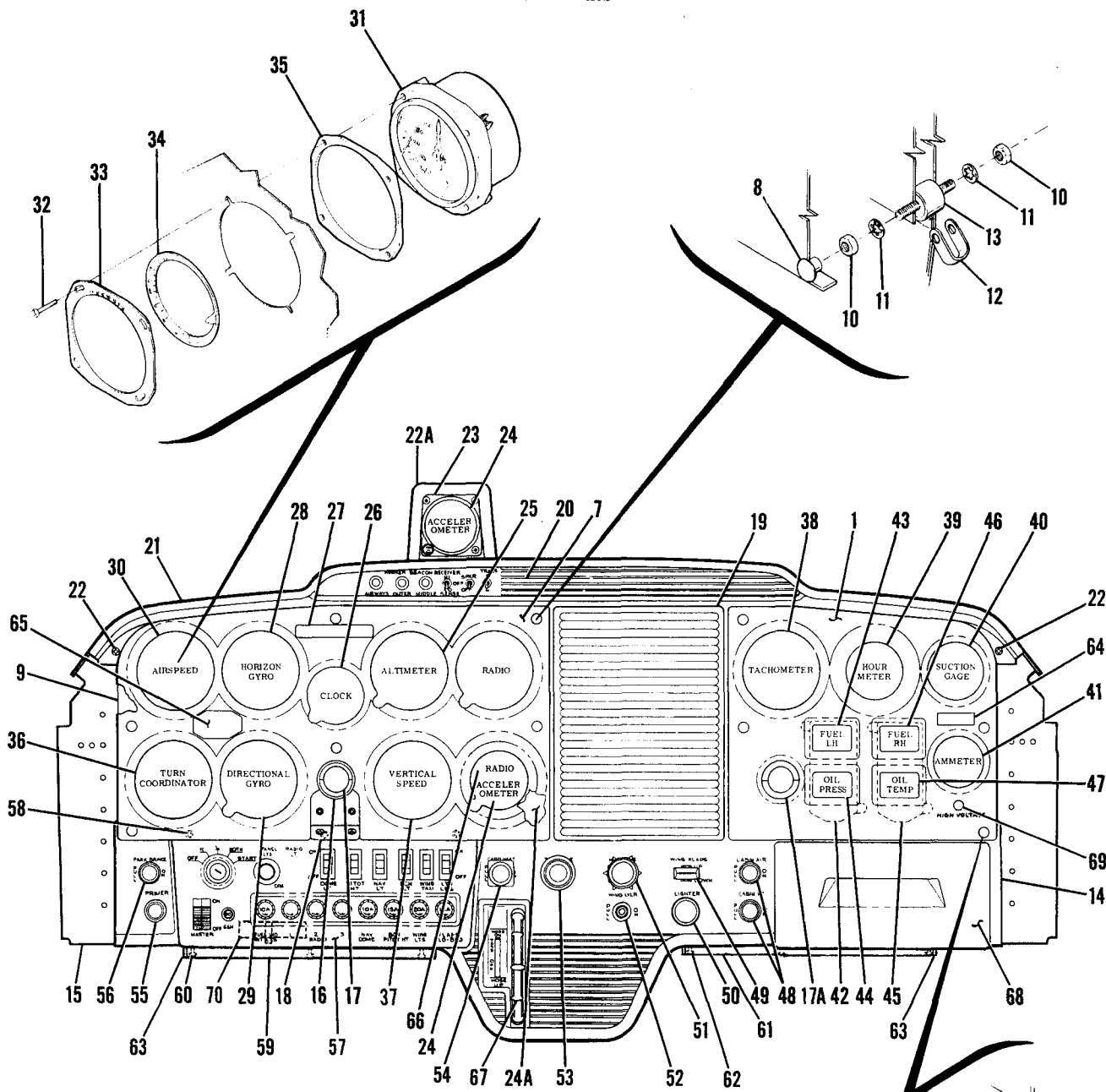


Instruments



150 SERIAL 15071129 THRU 15073658
 F150 SERIAL F15000530 THRU F15000863
 A150 SERIAL A1500001 THRU A1500342
 FA150 SERIAL FA1500001 THRU FA1500166

15071129 THRU 15072628
 F15000530 THRU F15000738
 A1500001 THRU A1500276
 FA1500001 THRU FA1500166

Figure 47. Instrument Panel Equipment Installation

FIGURE AND INDEX NO.	PART NUMBER		DESCRIPTION							UNITS PER ASSY	USABLE ON CODE
			1	2	3	4	5	6	7		
47 -			INSTRUMENT PANEL & EQUIPMENT INSTALLATION							NP	AP
- 1	0413461-2	□	COVER-ENGINE INSTRUMENT							1	AA
	0413461-12	□	COVER ASSEMBLY-ENGINE INSTRUMENT							1	AB
			ATTACHING PARTS								
- 2	0513351-1		SCREW POST							4	AA
- 3	AN340B8		NUT							4	AA
- 4	AN936A8		WASHER							4	AA
- 5	NAS43DD3-25		SPACER							4	AA
- 6	AN515-8R14		SCREW							4	AA
			-----*								
- 7	0413461-6	□	COVER-SHOCK PANEL USED WITH S1314N1 & C661012-0101							1	AJ
	0413461-7	□	COVER-SHOCK PANEL USED WITH C661011-0105, C661011-0106 C661071-0101 & C661071-0102							1	AA
	0413461-13	□	COVER ASSEMBLY-SHOCK PANEL USED WITH C661012-0101							1	AG
	0413461-14	□	COVER ASSEMBLY-SHOCK PANEL USED WITH C661071-0101 & C661071-0102							1	AB
			ATTACHING PARTS								
- 8	0513351-1		SCREW POST							6	AA
			-----*								
- 9	0413459-1		PANEL-SHOCK MOUNTED INSTRUMENT WEU 0413459-3							1	AK
	0413459-3		PANEL-SHOCK MOUNTED INSTRUMENT							1	AL
	0413459-2		PANEL ASSEMBLY-SHOCK MOUNTED INSTRUMENT WEU 0413459-4							1	AM
	0413459-4		PANEL ASSEMBLY-SHOCK MOUNTED INSTRUMENT							1	AN
			ATTACHING PARTS								
-10	AN340B8		NUT							12	
-11	AN936A8		WASHER							12	
-12	0413247		STRAP-GROUND							2	
-13	0411059-3		SHOCKMOUNT							6	AA
	0413523-1		SHOCKMOUNT WEU 0413523-4							6	AB
			-----*								
-14	0413467-5	□	COVER-STATIONARY PANEL							1	S
	0413467-8	□	COVER-STATIONARY PANEL							1	T
-15	0413457-8		PANEL ASSEMBLY-STATIONARY							1	AA
	0413457-10		PANEL ASSEMBLY-STATIONARY							1	AB
	S1863-2		NUTPLATE-DOUBLE LUG ATTACH SWITCH PANEL ASSEMBLY							3	
	S1862-1		NUTPLATE-SINGLE LUG ATTACH SWITCH PANEL ASSEMBLY							3	
	NAS684A06		NUTPLATE ATTACH GLOVE BOX DOOR							4	
	0413487-1		BRACKET-INSTRUMENT PANEL							1	
	0413522-1		BRACKET-INSTRUMENT PANEL COVER ATTACH							6	AB
-16	0413454-1	□	COLLAR ASSEMBLY-CONTROL LOCK							1	AA
	0760131-7		SUPPORT & COLLAR-CONTROL LOCK							1	AB
			ATTACHING PARTS								
	AN515-6R10		SCREW							4	
	AN960-6L		WASHER							4	
	MS21044N06		NUT							4	
	0413454-3		PLATE							1	AA
			-----*								
-17	0513056-3		GROMMET HALF-INSTRUMENT PANEL							2	AA
-17A	0513056-4		GROMMET HALF-INSTRUMENT PANEL							2	
-18	0413461-3	□	PLATE-SPLICE							1	AA
	0413461-15	□	PLATE ASSEMBLY-SPLICE							1	AB
			ATTACHING PARTS								
	S102126-88		SCREW							4	
	NAS395-4-3		NUT							4	
			-----*								
-19	0413467-3	□	COVER-RADIO CUTOUT							1	AC
	0413527-1	□	COVER-RADIO CUTOUT							1	AD
	0413532	□	TRIM-RADIO COVER							AR	AD
-20	0413467-4	□	INSERT-EYEBROW 150 & F150 ONLY							1	U
	0413512-1	□	INSERT-EYEBROW 150 & F150 ONLY							1	V
	0413467-6	□	INSERT-EYEBROW USED WHEN NARCO MARK 12B IS INSTALLED							1	W
			WITH VOA-50M INDICATOR 150 ONLY								
	0413512-2	□	INSERT-EYEBROW USED WHEN NARCO MARK 12B IS INSTALLED							1	X
			WITH VOA-50M INDICATOR 150 ONLY								
	0405004-1		PLACARD-INSTRUMENT PANEL A150 ONLY							1	E
	0405009-1		PLACARD-INSTRUMENT PANEL A150 ONLY							1	Y
	0405004-2		PLACARD-INSTRUMENT PANEL FA150 ONLY							1	F
	0405009-2		PLACARD-INSTRUMENT PANEL FA150 ONLY							1	Z
	0405004-3		PLACARD-INSTRUMENT PANEL USED WHEN NARCO MARK 12B IS INSTALLED WITH VOA-50M INDICATOR A150 ONLY							1	E
	0405009-3		PLACARD-INSTRUMENT PANEL USED WHEN NARCO MARK 12B IS INSTALLED WITH VOA-50M INDICATOR A150 ONLY							1	Y

CONTINUED ON NEXT PAGE



FIGURE AND INDEX NO.	PART NUMBER	DESCRIPTION	UNITS PER ASSY	USABLE ON CODE
47 -21	0413467-2	EYEBROW-INSTRUMENT PANEL -----	1	S
	0415003-2	EYEBROW ASSEMBLY-INSTRUMENT PANEL -----	1	T
-22	0413032-2 S1023A6-12B S1067B1 NAS446-2-3	ATTACHING PARTS -----		
		RETAINER-EYEBROW -----	1	S
		SCREW -----	9	
		WASHER -----	9	
-22A	0413470-1	NUT -----	2	
		-----*		
		COVER-ACCELEROMETER -----	1	C
-23	S102124-6 NAS446-1-1	ATTACHING PARTS -----		
		SCREW -----	4	
		NUT -----	4	
-24	0413491-1	-----*		
		BRACKET-ACCELEROMETER -----	1	C
		ATTACHING PARTS -----		
-24	AN515B8R6 MS21044N08	SCREW -----	3	
		NUT -----	3	
		-----*		
		ACCELEROMETER WEU C661015-0102 -----	1	AE
		ACCELEROMETER -----	1	AF
		ATTACHING PARTS -----		
-24A	C661015-0101 C661015-0102	SCREW -----	3	
		NUT -----	3	
		WASHER -----	3	
		-----*		
-25	AN515B8R10 AN936A8 AN936A8	ADAPTER-ACCELEROMETER -----	1	C
		ATTACHING PARTS -----		
		SCREW -----	3	
		WASHER -----	3	
-26	0413509-1	NUT -----	3	
		-----*		
		ALTIMETER-18,000 FT FOR VFR APPLICATIONS ONLY -----	1	D
		ALTIMETER-20,000 FT SENSITIVE WEU C661071-0101 -----	1	A
		ALTIMETER-20,000 FT SENSITIVE -----	1	AD
		ALTIMETER-20,000 FT FEET/MILIBARS WEU C661071-0102 -----	1	AC
		ALTIMETER-20,000 FT FEET/MILIBARS -----	1	AD
		ATTACHING PARTS -----		
		SCREW -----	3	
		-----*		
-27	C661012-0101 C661011-0105 C661071-0101 C661011-0106 C661071-0102	CLOCK-ELECTRIC WEU C664508-0101 -----	1	AC
		CLOCK-ELECTRIC -----	1	AD
		ATTACHING PARTS -----		
-28	AN515B6R10	SCREW -----	2	
		-----*		
-29	S1317N2 C664508-0101	PLACARD-AIRPLANE IDENTIFICATION -----	1	
		INDICATOR-GYRO HORIZON WEU C661001-0505 -----	1	Q
		INDICATOR-GYRO HORIZON WEU C661076-0101, -0102 OR -0103 -----	1	R
		INDICATOR-GYRO HORIZON WEU C661076-0102 -----	1	AC
		INDICATOR-GYRO HORIZON -----	1	AD
		INDICATOR-GYRO HORIZON WEU C661076-0101 -----	1	AC
		INDICATOR-GYRO HORIZON -----	1	AD
		INDICATOR-GYRO HORIZON WEU C661076-0103 -----	1	AC
		INDICATOR-GYRO HORIZON -----	1	AD
		INDICATOR-GYRO HORIZON -----	1	AQ
		ATTACHING PARTS -----		
		SCREW -----	4	
		-----*		
		-29	0400211-6 C661001-0501 C661001-0505 C661001-0503 C661076-0102 C661001-0502 C661076-0101 C661001-0504 C661076-0103 C661076-0105	INDICATOR-DIRECTIONAL GYRO WEU C661002-0505 -----
INDICATOR-DIRECTIONAL GYRO WEU C661075-0104 -----	1			R
INDICATOR-DIRECTIONAL GYRO WEU C661002-0506 -----	1			Q
INDICATOR-DIRECTIONAL GYRO WEU C661075-0103 -----	1			R
INDICATOR-DIRECTIONAL GYRO -----	1			AD
INDICATOR-DIRECTIONAL GYRO WEU C661075-0104 -----	1			AC
INDICATOR-DIRECTIONAL GYRO -----	1			AD
INDICATOR-DIRECTIONAL GYRO WEU C661075-0101 -----	1			AC
INDICATOR-DIRECTIONAL GYRO -----	1			AD
INDICATOR-DIRECTIONAL GYRO -----	1			AQ
INDICATOR-DIRECTIONAL GYRO WITH HEADING REF BUG -----	1			AN
ATTACHING PARTS -----				
SCREW -----	4			
-----*				

CONTINUED ON NEXT PAGE

FIGURE AND INDEX NO.	PART NUMBER	DESCRIPTION							UNITS PER ASSY	USABLE ON CODE	
		1	2	3	4	5	6	7			
47 -30	S1470N10	INDICATOR-AIRSPEED	WEU C661060-0101						1	B	
	S1323N4	INDICATOR-AIRSPEED	ALTERNATE WEU C661060-0101						1	B	
	C661060-0101	INDICATOR-AIRSPEED							1	AG	
	C661010-1004	INDICATOR-AIRSPEED	A150 & FA150 ONLY	WEU C661061-0102					1	AE	
	C661060-0102	INDICATOR-AIRSPEED	A150 & FA150 ONLY						1	AF	
		ATTACHING PARTS									
		AN515B6R10	SCREW							4	
			-----*-----								
			TRUE AIRSPEED INSTALLATION								
			INDICATOR-TRUE AIRSPEED	WEU C661061-0101						1	B
-31	C661010-0101	INDICATOR-TRUE AIRSPEED							1	AG	
	C661010-0105	INDICATOR-TRUE AIRSPEED	WEU C661061-0102						1	AE	
	C661061-0102	INDICATOR-TRUE AIRSPEED							1	AF	
		ATTACHING PARTS									
-32	AN515B6R16	SCREW							4		
-33	0700162-1	RETAINER ASSEMBLY							1		
-34	0700189-4	RING ASSEMBLY	WHEN EXHAUSTED USE 0700189-6						1	G	
	0700189-6	RING ASSEMBLY	WEU 0700189-10						1	H	
	0700189-10	RING ASSEMBLY							1	AD	
	0700162-7	SPACER							2		
		-----*-----									
-35	C661003-0501	INDICATOR-TURN COORDINATOR	WEU C661003-0504						1	AC	
	C661003-0504	INDICATOR-TURN COORDINATOR							1	AD	
	2904-1	INDICATOR-TURN COORDINATOR	BTID USED WITH						1	AC	
		WING LEVELER INSTALLATION ONLY	WEU C661003-0601								
	C661003-0601	INDICATOR-TURN COORDINATOR	USED WITH						1	AD	
		WING LEVELER INSTALLATION ONLY									
	S1302N1	INDICATOR-TURN & BANK	WEU S1413N2						1	AC	
	S1413N1	INDICATOR-TURN & BANK	ALT FOR S1302N1	WEU S1413N2					1	AC	
	S1413N2	INDICATOR-TURN & BANK							1	AD	
		ATTACHING PARTS									
	AN515B6R16	SCREW							4		
	AN936A6B	WASHER							4		
	AN340B6	NUT							4	AC	
		-----*-----									
-37	S1392N2	INDICATOR-VERTICAL SPEED	WEU C661080-0101						1	AC	
	C661080-0101	INDICATOR-VERTICAL SPEED							1	AD	
		ATTACHING PARTS									
		AN507B632R12	SCREW						3		
	S1066B1	WASHER						3			
		-----*-----									
-38	S1305N7	TACHOMETER	WEU C668020-0101						1	AC	
	C668020-0101	TACHOMETER							1	AD	
		ATTACHING PARTS									
		AN515B8R10	SCREW						4		
	NAS43DD3-24	SPACER							4		
	AN936A8	WASHER							4		
	AN340B8	NUT							4		
		-----*-----									
	S1605-3	SHAFT-TACHOMETER							1		
	-39	C664501-0101	HOURLY METER	WEU C664501-0103						1	AC
C664501-0103		HOURLY METER							1	AD	
		ATTACHING PARTS									
		AN515-6R6	SCREW						4		
	NAS43DD1-6	SPACER						4			
	AN936A6	WASHER						4			
	AN340B6	NUT						4			
		-----*-----									
	0411757-1	COVER-HOURLY METER						1			
		ATTACHING PARTS									
	AN515B6R6	SCREW						4			
	AN936A6	WASHER						4			
	AN340B6	NUT						4			
		-----*-----									
-40	S1414N1	GAGE-SUCTION	WEU C668540-0101						1	AC	
	S1414-1	GAGE-SUCTION	ALT WEU C668540-0101						1	AC	
	C668540-0101	GAGE-SUCTION							1	AD	
		ATTACHING PARTS									
		AN515B6R12	SCREW						4		
		AN936A6	WASHER	USED WITH S1414-1					4	AC	
		AN340B6	NUT	USED WITH S1414-1					4	AC	
			-----*-----								

CONTINUED ON NEXT PAGE

FIGURE AND INDEX NO.	PART NUMBER	DESCRIPTION	UNITS PER ASSY	USABLE ON CODE		
					1	2
47 -41	S1320-1	AMMETER-60 AMP WEU S1320-3 -----	1	AC		
	S1320-3	AMMETER-60 AMP WEU S1320-5 -----	1			
-42	S1320-5	AMMETER-60 AMP -----	1	L M		
	0413427-3	SPACER-AMMETER -----	1			
	C669504-0102	INSTRUMENT CLUSTER-LH WEU C669504-0104 -----	1			
	C669504-0104	INSTRUMENT CLUSTER-LH -----	1			
		ATTACHING PARTS				
	AN515-6R14	SCREW -----	2			
	NAS43DD1-47	SPACER -----	2			
	AN936A6	WASHER -----	2			
	AN340B6	NUT -----	2			
		---*---				
-43	441364	GAGE-FUEL SW -----	1	L M S T		
-44	444652	GAGE-OIL PRESSURE SW -----	1			
	444679	GAGE-OIL PRESSURE SW -----	1			
-45	C669505-0102	INSTRUMENT CLUSTER-RH -----	1	S T		
	C669505-0103	INSTRUMENT CLUSTER-RH -----	1			
		ATTACHING PARTS				
	AN515-6R14	SCREW -----	2			
	NAS43DD1-47	SPACER -----	2			
	AN936A6	WASHER -----	2			
	AN340B6	NUT -----	2			
		---*---				
	-46	441365	GAGE-FUEL SW -----		1	S T
	-47	442820	GAGE-OIL TEMP SW -----		1	
	442876-38	GAGE-OIL TEMP SW -----	1			
-48	S1239-46	CONTROL-CABIN HEAT, CABIN AIR -----	2	S T		
-49	S1661-2	SWITCH-FLAP -----	1			
	S1216-4	ATTACHING PARTS				
		NUT -----	1			
		---*---				
-50	S1771-1	KNOB-FLAP SWITCH -----	1	S T		
	0513039-7	CIGAR LIGHTER -----	1			
	L4858-1	PLUG-HEATER CUE -----	1			
	S1982-1	KNOB-CIGAR LIGHTER -----	1			
	60232-1	CIRCUIT BREAKER-CIGAR LIGHTER CUE -----	1			
	CM2692-28-2H	PLUG BUTTON INSTALLED WHEN LIGHTER IS NOT USED -----	1			
	-51	S1777-1	CONTROL-MIXTURE -----		1	
	-52	S1791-1	VALVE-WING LEVELER -----		1	
			ATTACHING PARTS			
		AN960-616	WASHER -----		1	
	0713026-6	NUT -----	1			
		---*---				
-53	S1981-1	KNOB-WING LEVELER VALVE -----	1	N P		
	S1222-17	CONTROL-THROTTLE WEU C299505-0202S -----	1			
	C299505-0202S	CONTROL-THROTTLE -----	1			
	S1748-1	KNOB-THROTTLE -----	1			
	1213646-2	WASHER BETWEEN PANEL COVER & CONTROL -----	1			
	-54	S1230-19	CONTROL-CARBURETOR HEAT -----		1	
	-55	C291502-0103	PRIMER ASSEMBLY-FUEL -----		1	
		S1974-1	KNOB-PRIMER -----		1	
	-56	S1239-49	CONTROL-PARKING BRAKE -----		1	
	-57	SEE FIG 48	PANEL ASSEMBLY-SWITCH -----		1	
		ATTACHING PARTS				
-58	S1021Z6-8	SCREW -----	3			
		---*---				
-59	0413514-1	PAD-PROTECTION -----	1	AH AB		
	0414037-1	PAD-PROTECTION -----	1			
		ATTACHING PARTS				
-60	S1021Z6-14	SCREW -----	3	AH AB		
	S1021Z6-8	SCREW -----	3			
		---*---				
-61	0413514-9	PAD-PROTECTION -----	1	AH AB		
	0414037-2	PAD-PROTECTION -----	1			
		ATTACHING PARTS				
-62	S1021Z6-7	SCREW -----	3	AH AB		
	S1021Z6-8	SCREW -----	3			
		---*---				
-63	1514014-1	CAP -----	4	AH		
-64	SEE FIG 2	PLACARD-MASTER SWITCH -----	1			

CONTINUED ON NEXT PAGE

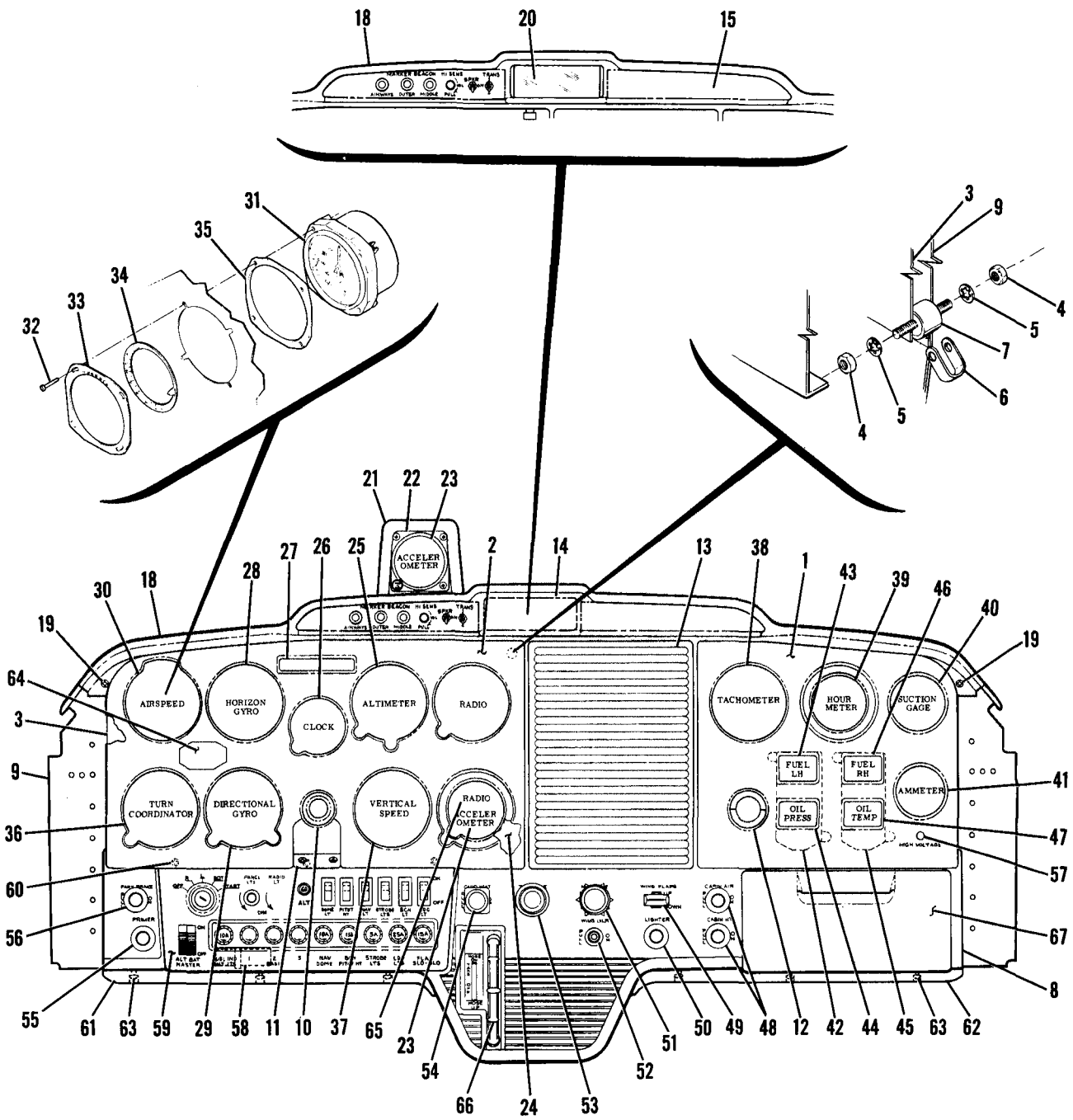
FIGURE AND INDEX NO.	PART NUMBER	DESCRIPTION	UNITS PER ASSY	USABLE ON CODE
		1 2 3 4 5 6 7		
47 -65	SEE FIG 2	PLACARD-SPIN -----	1	C
-66		RADIO INSTALLATION SEE CESSNA ELECTRONICS MANUAL -----	1	
-67	SEE FIG 72	ELEVATOR TRIM CONTROL INSTALLATION -----	1	
-68	SEE FIG 49	GLOVE BOX & DOOR INSTALLATION -----	1	
-69	S2135-1	LIGHT ASSEMBLY-OVERVOLTAGE -----	1	AB
-70	C593001-0101	SENSOR-OVERVOLTAGE -----	1	
	S2209-2	ATTACHING PARTS -----		
		TIE STRAP -----	1	
		-----*		
		NOTE. □THIS PART NUMBER MUST HAVE A SECOND DASH NUMBER ADDED TO DENOTE COLOR. REFER TO HOW TO ORDER INTERIOR PARTS-PAGE VII.		
		NOTE. *THESE GYROS ARE PHYSICALLY & FUNCTIONALLY INTERCHANGEABLE.		
		NOTE. †THESE GYROS ARE PHYSICALLY & FUNCTIONALLY INTERCHANGEABLE.		
		A---150 SERIAL 15071129 THRU 15072628 A150 SERIAL A1500001 THRU A1500276		
		B---150 SERIAL 15071129 THRU 15072628 F150 SERIAL F15000530 THRU F15000863		
		C---A150 SERIAL A1500001 THRU A1500342 FA150 SERIAL FA1500001 THRU FA1500166		
		D---150 SERIAL 15071129 THRU 15073658 E---A150 SERIAL A1500001 THRU A1500226		
		F---FA150 SERIAL FA1500001 THRU FA1500081		
		G---150 SERIAL 15071129 THRU 15071794 F150 SERIAL F15000530 THRU F15000679 A150 SERIAL A1500001 THRU A1500160 FA150 SERIAL FA1500001 THRU FA1500059		
		H---150 SERIAL 15071795 THRU 15072628 F150 SERIAL F15000680 THRU F15000863 A150 SERIAL A1500161 THRU A1500276 FA150 SERIAL FA1500060 THRU FA1500166		
		J---150 SERIAL 15072629 THRU 15073391 F150 SERIAL F15000530 THRU F15000863 A150 SERIAL A1500277 THRU A1500332 FA150 SERIAL FA1500001 THRU FA1500166		
		K---150 SERIAL 15073392 THRU 15073658 A150 SERIAL A1500333 THRU A1500342		
		L---150 SERIAL 15071129 THRU 15072182 F150 SERIAL F15000530 THRU F15000658 A150 SERIAL A1500001 THRU A1500246 FA150 SERIAL FA1500001 THRU FA1500081		
		M---150 SERIAL 15072183 THRU 15073658 F150 SERIAL F15000659 THRU F15000863 A150 SERIAL A1500247 THRU A1500342 FA150 SERIAL FA1500082 THRU FA1500166		
		N---150 SERIAL 15071129 THRU 15071874 F150 SERIAL F15000530 THRU F15000658 A150 SERIAL A1500001 THRU A1500182 FA150 SERIAL FA1500001 THRU FA1500081		
		P---150 SERIAL 15071875 THRU 15073658 F150 SERIAL F15000659 THRU F15000863 A150 SERIAL A1500183 THRU A1500342 FA150 SERIAL FA1500082 THRU FA1500166		
		Q---150 SERIAL 15071129 THRU 15071784 F150 SERIAL F15000530 THRU F15000658 A150 SERIAL A1500001 THRU A1500164 FA150 SERIAL FA1500001 THRU FA1500081		
		R---150 SERIAL 15071785 THRU 15072628 F150 SERIAL F15000659 THRU F15000863 A150 SERIAL A1500165 THRU A1500276 FA150 SERIAL FA1500082 THRU FA1500166		
		CONTINUED ON NEXT PAGE		

FIGURE AND INDEX NO.	PART NUMBER	DESCRIPTION							UNITS PER ASSY	USABLE ON CODE
		1	2	3	4	5	6	7		
47 -		S---	150	SERIAL	15071129	THRU	15072003			
			F150	SERIAL	F15000530	THRU	F15000658			
			A150	SERIAL	A1500001	THRU	A1500226			
			FA150	SERIAL	FA1500001	THRU	FA1500081			
		T---	150	SERIAL	15072004	THRU	15073658			
			F150	SERIAL	F15000659	THRU	F15000863			
			A150	SERIAL	A1500227	THRU	A1500342			
			FA150	SERIAL	FA1500082	THRU	FA1500167			
		U---	150	SERIAL	15071129	THRU	15072003			
			F150	SERIAL	F15000530	THRU	F15000658			
		V---	150	SERIAL	15072004	THRU	15073658			
			F150	SERIAL	F15000659	THRU	F15000863			
		W---	150	SERIAL	15071129	THRU	15072003			
		X---	150	SERIAL	15072004	THRU	15073658			
		Y---	A150	SERIAL	A1500227	THRU	A1500342			
		Z---	FA150	SERIAL	FA1500082	THRU	FA1500166			
		AA---	150	SERIAL	15071129	THRU	15072628			
			F150	SERIAL	F1500530	THRU	F15000738			
			A150	SERIAL	A1500001	THRU	A1500276			
			FA150	SERIAL	FA1500001	THRU	FA1500166			
		AB---	150	SERIAL	15072629	THRU	15073658			
			F150	SERIAL	F15000739	THRU	F15000863			
			A150	SERIAL	A1500277	THRU	A1500342			
		AC---	150	SERIAL	15071129	THRU	15072628			
			F150	SERIAL	F15000530	THRU	F15000863			
			A150	SERIAL	A1500001	THRU	A1500276			
			FA150	SERIAL	FA1500001	THRU	FA1500166			
		AD---	150	SERIAL	15072629	THRU	15073658			
			A150	SERIAL	A1500277	THRU	A1500342			
		AE---	A150	SERIAL	A1500001	THRU	A1500276			
			FA150	SERIAL	FA1500001	THRU	FA1500166			
		AF---	A150	SERIAL	A1500277	THRU	A1500342			
		AG---	150	SERIAL	15072629	THRU	15073658			
		AH---	150	SERIAL	15072004	THRU	15072628			
			F150	SERIAL	F15000659	THRU	F15000738			
			A150	SERIAL	A1500227	THRU	A1500276			
			FA150	SERIAL	FA1500082	THRU	FA1500166			
		AJ---	150	SERIAL	15071129	THRU	15072628			
		AK---	150	SERIAL	15071129	THRU	15072628			
			F150	SERIAL	F15000530	THRU	F15000738			
			A150	SERIAL	A1500001	THRU	A1500276			
			FA150	SERIAL	FA1500001	THRU	FA1500161			
		AL---	FA150	SERIAL	FA1500162	THRU	FA1500166			
		AM---	150	SERIAL	15072629	THRU	15073449			
			F150	SERIAL	F15000739	THRU	F15000818			
			A150	SERIAL	A1500277	THRU	A1500333			
		AN---	150	SERIAL	15073450	THRU	15073658			
			F150	SERIAL	F15000819	THRU	F15000863			
			A150	SERIAL	A1500334	THRU	A1500342			
		AP---	150	SERIAL	15071129	THRU	15073658			
			F150	SERIAL	F15000530	THRU	F15000863			
			A150	SERIAL	A1500001	THRU	A1500342			
			FA150	SERIAL	FA1500001	THRU	FA1500166			
		AQ---	150	SERIAL	15071129	THRU	15073658			
			A150	SERIAL	A1500001	THRU	A1500342			

FIGURE AND INDEX NO.	PART NUMBER	DESCRIPTION	UNITS PER ASSY	USABLE ON CODE
47A-		INSTRUMENT PANEL & EQUIPMENT INSTALLATION -----	NP	A
- 1	0413529-1	COVER ASSY-ENGINE INSTRUMENT -----	1	T
	0413529-8	COVER ASSY-ENGINE INSTRUMENT -----	1	Z
	0413529-12	COVER ASSY-ENGINE INSTRUMENT -----	1	AC
	1513839-6	GUIDE-COVER ALIGNING -----	3	U
- 2	0413529-3	COVER ASSY-SHOCK PANEL USED WITH C661012-0101 -----	1	L
	0413529-10	COVER ASSY-SHOCK PANEL USED WITH C661012-0101 -----	1	M
	0413529-4	COVER ASSY-SHOCK PANEL USED WITH C661071-0101 & -----	1	T
	0413529-11	C661071-0102 COVER ASSY-SHOCK PANEL USED WITH C661071-0101 & -----	1	U
	1513839-3	C661071-0102 GUIDE-COVER ALIGNING -----	2	T
	1513839-3	GUIDE-COVER ALIGNING -----	5	U
- 3	0413459-4	PANEL ASSY-SHOCK MOUNTED INSTRUMENT -----	1	T
	0413459-5	PANEL ASSY-SHOCK MOUNTED INSTRUMENT -----	1	U
		ATTACHING PARTS -----		
- 4	MS25082B2	NUT -----	12	
- 5	AN936A8	WASHER -----	12	
- 6	0413247	STRAP-GROUND -----	2	
- 7	0413523-4	SHOCKMOUNT -----	6	
		----*----		
	MS35489-33	GROMMET-PANEL GUIDE -----	5	U
- 8	0413467-8	COVER-STATIONARY PANEL -----	1	T
	0413467-9	COVER-STATIONARY PANEL -----	1	Z
	0413467-10	COVER-STATIONARY PANEL -----	1	AC
- 9	0413457-12	PANEL ASSY-STATIONARY -----	1	T
	0413457-14	PANEL ASSY-STATIONARY -----	1	Z
	0413457-15	PANEL ASSY-STATIONARY -----	1	AC
	S1863-2	NUTPLATE-DOUBLE LUG ATTACH SWITCH PANEL -----	3	
	S1862-1	NUTPLATE-SINGLE LUG ATTACH SWITCH PANEL -----	3	
	NAS684A06	NUTPLATE ATTACH GLOVE BOX DOOR -----	4	
	0413487-1	BRACKET-INSTRUMENT PANEL -----	1	
	0413522-3	BRACKET-INSTRUMENT PANEL COVER ATTACH -----	6	T
	0413522-3	BRACKET-INSTRUMENT PANEL COVER ATTACH -----	2	U
	0413534-1	BRACKET-MARKER BEACON -----	1	U
	MS35489-4	GROMMET -----	3	U
-10	0760131-7	SUPPORT & COLLAR-CONTROL LOCK -----	1	J
	0760131-6	SUPPORT & COLLAR-CONTROL LOCK -----	1	K
		ATTACHING PARTS -----		
	AN515-6R10	SCREW -----	4	
	AN960-6L	WASHER -----	4	
	MS21044N06	NUT -----	4	
		----*----		
-11	0413529-7	PLATE ASSY-SPLICE -----	1	
		ATTACHING PARTS -----		
	S1021Z6-8B	SCREW -----	2	
	NAS395-4-3	NUT -----	2	
		----*----		
-12	0513056-3	GROMMET HALF -----	2	T
	0760131-5	SUPPORT-CONTROL TUBE -----	1	U
		ATTACHING PARTS -----		
	AN515-6R10	SCREW -----	4	U
	AN960-6L	WASHER -----	4	U
	MS21044N06	NUT -----	4	U
		----*----		
-13	0413531-1	COVER-RADIO CUTOUT -----	1	T
	0413531-28	COVER ASSY-RADIO CUTOUT -----	1	U
	0413532-1	TRIM-RADIO COVER -----	AR	
-14	0415005-1	INSERT-EYEBROW 150 WITHOUT MIRROR INSTL -----	1	L
	0415005-3	INSERT-EYEBROW A150 WITHOUT MIRROR INSTL -----	1	D
	0415005-5	INSERT-EYEBROW 150 & A150 WITHOUT MIRROR INSTL -----	1	N
	0415005-9	INSERT-EYEBROW 150 & A150 WITHOUT MIRROR INSTL -----	1	E
	0415005-7	INSERT-EYEBROW 150 & A150 WITHOUT MIRROR INSTL USED -----	1	N
	0415005-11	WITH MARKER BCN INSTL INSERT-EYEBROW 150 & A150 WITHOUT MIRROR INSTL USED -----	1	E
		WITH MARKER BCN INSTL -----		
-15	0415005-2	INSERT-EYEBROW 150 & F150 WITH MIRROR INSTL -----	1	P
	0415005-4	INSERT-EYEBROW A150 & FA150 WITH MIRROR INSTL -----	1	R
	0415005-6	INSERT-EYEBROW USED WITH MIRROR INSTL -----	1	Z
	0415005-10	INSERT-EYEBROW USED WITH MIRROR INSTL -----	1	AC
	0415005-8	INSERT-EYEBROW USED WITH MIRROR & MARKER BCN INSTL -----	1	Z
	0415005-12	INSERT-EYEBROW USED WITH MIRROR & MARKER BCN INSTL -----	1	AC
-16		DELETED, NOT USED -----		
-17		DELETED, NOT USED -----		

CONTINUED ON NEXT PAGE

Instruments (Cont)



150 SERIAL 15073659 THRU 15077005
 F150 SERIAL F15000864 THRU F15001248
 A150 SERIAL A1500343 THRU A1500609
 FA150 SERIAL FA1500167 THRU FA1500281

Figure 47A. Instrument Panel Equipment Installation

FIGURE AND INDEX NO.	PART NUMBER	DESCRIPTION	UNITS PER ASSY							USABLE ON CODE
			1	2	3	4	5	6	7	
47A-		TRUE AIRSPEED INSTALLATION -----								
-31	C661061-0101	INDICATOR-TRUE AIRSPEED -----							NP	
	C661061-0102	INDICATOR-TRUE AIRSPEED A150 & FA150 ONLY -----							1	C
		ATTACHING PARTS -----							1	F
-32	AN515B6R16	SCREW -----							4	
-33	0700162-1	RETAINER ASSY -----							1	
-34	0700189-10	RING ASSY -----							1	
-35	0700162-7	SPACER -----							2	
		-----*								
-36	C661003-0501	INDICATOR-TURN COORDINATOR WEU C661003-0504 -----							1	G
	C661003-0504	INDICATOR-TURN COORDINATOR -----							1	H
	C661003-0601	INDICATOR-TURN COORDINATOR USED WITH -----							1	T
		WING LEVELER INSTALLATION ONLY -----								
	S1413N2	INDICATOR-TURN & BANK -----							1	
		ATTACHING PARTS -----								
	AN515B6R16	SCREW -----							4	
	AN936A6B	WASHER -----							4	
		-----*								
-37	C661080-0101	INDICATOR-VERTICAL SPEED -----							1	
		ATTACHING PARTS -----								
	AN507B632R12	SCREW -----							3	
	S1066B1	WASHER -----							3	
		-----*								
-38	S1305N7	TACHOMETER WEU C668020-0101 -----							1	G
	C668020-0101	TACHOMETER -----							1	V
	C668020-0113	TACHOMETER -----							1	AA
		ATTACHING PARTS -----								
	AN515B8R10	SCREW -----							4	
	NAS43DD3-22	SPACER -----							4	
	AN936A8	WASHER -----							4	
	AN340B8	NUT -----							4	
		-----*								
-39	S1605-3	SHAFT-TACHOMETER -----							1	
	C664501-0101	HOURMETER WEU C664501-0103 -----							1	G
	C664501-0103	HOURMETER -----							1	H
		ATTACHING PARTS -----								
	AN515-6R6	SCREW -----							4	
	NAS43DD1-6	SPACER -----							4	
	AN936A6	WASHER -----							4	
	AN340B6	NUT -----							4	
		-----*								
-40	S1414N1	GAGE-SUCTION WEU C668540-0101 -----							1	G
	C668540-0101	GAGE-SUCTION -----							1	H
		ATTACHING PARTS -----								
	AN515B6R12	SCREW -----							4	
		-----*								
-41	S1320-5	AMMETER-60 AMP -----							1	
	0413427-3	SPACER-AMMETER -----							1	
-42	C669504-0104	INSTRUMENT CLUSTER-LH -----							1	
		ATTACHING PARTS -----								
	AN515-6R14	SCREW -----							2	
	NAS43DD1-32	SPACER -----							2	
	AN936A6	WASHER -----							2	
	AN340B6	NUT -----							2	
		-----*								
-43	441364	GAGE-FUEL SW -----							1	
-44	444679	GAGE-OIL PRESSURE SW -----							1	
-45	C669505-0103	INSTRUMENT CLUSTER-RH -----							1	
		ATTACHING PARTS -----								
	AN515-6R14	SCREW -----							2	
	NAS43DD1-32	SPACER -----							2	
	AN936A6	WASHER -----							2	
	AN340B6	NUT -----							2	
		-----*								
-46	441365	GAGE-FUEL SW -----							1	
-47	442876-38	GAGE-OIL TEMP SW -----							1	
-48	S1239-46	CONTROL-CABIN HEAT, CABIN AIR -----							2	
-49	S1661-2	SWITCH-FLAP -----							1	
		ATTACHING PARTS -----								
	S1216-4	NUT -----							1	
		-----*								
	S1771-1	KNOB-FLAP SWITCH -----							1	

CONTINUED ON NEXT PAGE

FIGURE AND INDEX NO.	PART NUMBER	DESCRIPTION	UNITS PER ASSY	USABLE ON CODE
		1 2 3 4 5 6 7		
47A-50	0513039-7	CIGAR LIGHTER -----	1	
	L4858-1	PLUG-HEATER CUE -----	1	
	S1982-1	KNOB-CIGAR LIGHTER -----	1	
	60232-1	CIRCUIT BREAKER-CIGAR LIGHTER CUE -----	1	Q
	155109A	FUSEHOLDER-CIGAR LIGHTER -----	1	Y
	SFE-9	FUSE-CIGAR LIGHTER -----	1	Y
	CM2692-28-2H	PLUG BUTTON INSTALLED WHEN LIGHTER IS NOT USED -----	1	
-51	S1777-1	CONTROL-MIXTURE -----	1	AB
	S1234-11	CONTROL-MIXTURE -----	1	AC
	041811-1	SPACER-MIXTURE CONTROL .120 THICK -----	AR	AC
	041811-2	SPACER-MIXTURE CONTROL .060 THICK -----	AR	AC
-52	S1791-1	VALVE-WING LEVELER -----	1	T
		ATTACHING PARTS		
	AN960-616	WASHER -----	1	T
	0713026-6	NUT -----	1	T
		*-----		
	S1981-1	KNOB-WING LEVELER VALVE -----	1	T
-53	C299505-0202S	CONTROL-THROTTLE -----	1	
	S1748-1	KNOB-THROTTLE -----	1	
	1213646-2	WASHER BETWEEN PANEL COVER & CONTROL -----	1	
-54	S1230-19	CONTROL-CARBURETOR HEAT -----	1	
-55	C291502-0103	PRIMER ASSY-FUEL -----	1	
	S1974-1	KNOB-PRIMER -----	1	
-56	S1239-49	CONTROL-PARKING BRAKE -----	1	
-57	S2135-1	LIGHT ASSY-OVERVOLTAGE -----	1	
-58	C593001-0101	SENSOR-OVERVOLTAGE -----	1	
		ATTACHING PARTS		
	S2209-2	TIE STRAP -----	1	
		*-----		
-59	SEE FIG 48 & 48A	PANEL ASSY-SWITCH -----	1	
		ATTACHING PARTS		
-60	S102126-8	SCREW -----	3	
		*-----		
-61	0414037-1	PAD-PROTECTION LH WEU 0414037-3 -----	1	T
	0414037-3	PAD-PROTECTION LH -----	1	U
-62	0414037-2	PAD-PROTECTION RH -----	1	
		ATTACHING PARTS		
-63	S102126-8	SCREW -----	3	
		*-----		
-64	SEE FIG 2A	PLACARD-SPIN -----	1	
-65		RADIO INSTALLATION SEE CESSNA ELECTRONICS MANUAL -----	AR	
-66	SEE FIG 72	ELEVATOR TRIM CONTROL INSTALLATION -----	1	
-67	SEE FIG 49	GLOVE BOX & DOOR INSTALLATION -----	1	
<p>NOTE. THIS PART NUMBER MUST HAVE A SECOND DASH NUMBER ADDED TO DENOTE COLOR. REFER TO HOW TO ORDER INTERIOR PARTS-PAGE VII.</p> <p>NOTE. *THESE GYROS ARE PHYSICALLY & FUNCTIONALLY INTERCHANGABLE.</p> <p>NOTE. †THESE GYROS ARE PHYSICALLY & FUNCTIONALLY INTERCHANGABLE.</p> <p>A---150 SERIAL 15073659 THRU 15077005 F150 SERIAL F15000864 THRU F15001248 A150 SERIAL A1500343 THRU A1500609 FA150 SERIAL FA1500167 THRU FA1500281</p> <p>B---150 SERIAL 15073659 THRU 15077005 C---150 SERIAL 15073659 THRU 15077005 F150 SERIAL F15000864 THRU F15001248</p> <p>D---A150 SERIAL A1500343 THRU A1500429 E---150 SERIAL 15075782 THRU 15077005 A150 SERIAL A1500524 THRU A1500609</p> <p>F---A150 SERIAL A1500343 THRU A1500609 FA150 SERIAL FA1500167 THRU FA1500281</p> <p>G---F150 SERIAL F15000864 THRU F15001013 FA150 SERIAL FA1500167 THRU FA1500211</p> <p style="text-align: center;">CONTINUED ON NEXT PAGE</p>				

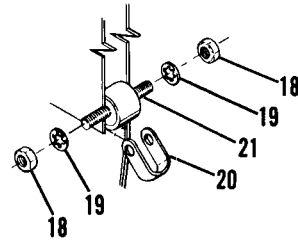
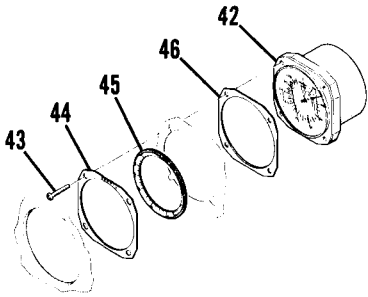
FIGURE AND INDEX NO.	PART NUMBER	DESCRIPTION							UNITS PER ASSY	USABLE ON CODE
		1	2	3	4	5	6	7		
47A-		H---	150	SERIAL	15073659	THRU	15077005			
			F150	SERIAL	F15001014	THRU	F15001248			
			A150	SERIAL	A1500343	THRU	A1500609			
			FA150	SERIAL	FA1500212	THRU	FA1500281			
		J---	150	SERIAL	15073659	THRU	15074384			
			F150	SERIAL	F15000864	THRU	F1500943			
			A150	SERIAL	A1500343	THRU	A1500389			
			FA150	SERIAL	FA1500167	THRU	FA1500211			
		K---	150	SERIAL	15074385	THRU	15077005			
			F150	SERIAL	F15000944	THRU	F15001248			
			A150	SERIAL	A1500390	THRU	A1500609			
			FA150	SERIAL	FA1500212	THRU	FA1500281			
		L---	150	SERIAL	15073659	THRU	15074850			
		M---	150	SERIAL	15074851	THRU	15077005			
		N---	150	SERIAL	15074851	THRU	15075781			
			A150	SERIAL	A1500430	THRU	A1500523			
		P---	150	SERIAL	15073659	THRU	15074850			
			F150	SERIAL	F15000864	THRU	F15001013			
		Q---	150	SERIAL	15073659	THRU	15075564			
			F150	SERIAL	F15000864	THRU	F15001143			
			A150	SERIAL	A1500343	THRU	A1500480			
			FA150	SERIAL	FA1500167	THRU	FA1500261			
		R---	A150	SERIAL	A1500343	THRU	A1500249			
			FA150	SERIAL	FA1500167	THRU	FA1500211			
		S---	A150	SERIAL	A1500430	THRU	A1500609			
			FA150	SERIAL	FA1500212	THRU	FA1500281			
		T---	150	SERIAL	15073659	THRU	15074850			
			F150	SERIAL	F15000864	THRU	F15001013			
			A150	SERIAL	A1500343	THRU	A1500429			
			FA150	SERIAL	FA1500167	THRU	FA1500211			
		U---	150	SERIAL	15074851	THRU	15077005			
			F150	SERIAL	F15001014	THRU	F15001248			
			A150	SERIAL	A1500430	THRU	A1500609			
			FA150	SERIAL	FA1500212	THRU	FA1500281			
		V---	150	SERIAL	15073659	THRU	15075781			
			F150	SERIAL	F15001014	THRU	F15001143			
			A150	SERIAL	A1500343	THRU	A1500429			
		W---	150	SERIAL	15073659	THRU	15077005			
			A150	SERIAL	A1500343	THRU	A1500609			
		X---	150	SERIAL	15074564	THRU	15077005			
			F150	SERIAL	F15000944	THRU	F15001248			
			A150	SERIAL	A1500408	THRU	A1500609			
			FA150	SERIAL	FA1500212	THRU	FA1500281			
		Y---	150	SERIAL	15075565	THRU	15077005			
			F150	SERIAL	F15000144	THRU	F15001248			
			A150	SERIAL	A1500481	THRU	A1500609			
			FA150	SERIAL	FA1500262	THRU	FA1500281			
		Z---	150	SERIAL	15074851	THRU	15075781			
			F150	SERIAL	F15001014	THRU	F15001143			
			A150	SERIAL	A1500430	THRU	A1500523			
			FA150	SERIAL	FA1500212	THRU	FA1500261			
		AA---	150	SERIAL	15075781	THRU	15077005			
			F150	SERIAL	F15001143	THRU	F15001248			
			A150	SERIAL	A1500430	THRU	A1500609			
		AB---	150	SERIAL	15073659	THRU	15075781			
			F150	SERIAL	F15000864	THRU	F15001143			
			A150	SERIAL	A1500343	THRU	A1500523			
			FA150	SERIAL	FA1500167	THRU	FA1500261			
		AC---	150	SERIAL	15075782	THRU	15077005			
			F150	SERIAL	F15001144	THRU	F15001248			
			A150	SERIAL	A1500524	THRU	A1500609			
			FA150	SERIAL	FA1500262	THRU	FA1500281			



FIGURE AND INDEX NO.	PART NUMBER	DESCRIPTION	UNITS PER ASSY	USABLE ON CODE
47B-		INSTRUMENT PANEL & EQUIPMENT INSTALLATION -----	NP	A
- 1	0413540-1	PANEL ASSY-STATIONARY INSTRUMENT -----	1	
- 2	0413534-1	BRACKET-MARKER BEACON -----	1	
- 3	S2092-3	FASTENER-HOOK BKI -----	AR	
- 4	MS35489-4	GROMMET -----	3	
- 5	0413542-1	STIFFENER -----	1	
- 6	0413522-3	BRACKET-INSTRUMENT PANEL ATTACH -----	2	
	S2093-3	FASTENER-HOOK BKI -----	AR	
- 7	AN515B8R6	SCREW -----	1	
	AN936A6	WASHER -----	1	
	AN340B6	NUT -----	1	
- 8	0413557-1	BRACKET ASSY -----	2	
- 8A	0413538-1	STIFFENER -----	1	
- 9	S1863-2	NUTPLATE -----	11	
-10	0413543-2	STRAP -----	1	
-11	0413550-1	STIFFENER -----	1	
-12	0413541-2	PANEL ASSY-LOWER -----	1	
-13	AN507-632R24	SCREW -----	4	
-14	AN936A6	WASHER -----	4	
-15	AN340B6	NUT -----	4	
-16	0413544-5	COVER ASSY-SHOCK PANEL -----	1	
	1513839-3	GUIDE-COVER ALIGNING -----	4	
	S2092-4	FASTENER-PILE BKI -----	AR	
-17	0413459-7	PANEL ASSY-SHOCK MOUNTED INSTRUMENT -----	1	
		ATTACHING PARTS -----		
-18	MS25082B2	NUT -----	14	
-19	AN936A8	WASHER -----	14	
-20	0413247	STRAP-GROUND -----	2	
-21	0413523-4	SHOCKMOUNT -----	7	
		-----*		
	MS35489-33	GROMMET-PANEL GUIDE -----	4	
	S2092-3	FASTENER-HOOK BKI -----	AR	
-22	0413544-2	COVER ASSY-STATIONARY INSTRUMENT RH -----	1	
	1513839-6	GUIDE-COVER ALIGNING -----	3	
	S2092-4	FASTENER-PILE BKI -----	AR	
-23	0413545-1	COVER ASSY-LOWER INSTRUMENT PANEL -----	1	
		ATTACHING PARTS -----		
	S1021Z6-8	SCREW -----	12	
		-----*		
-24	0413554-1	COVER ASSY-RADIO CUTOUT RH -----	1	
	S2092-3	FASTENER-HOOK BKI -----	AR	
-25	0413553-1	COVER ASSY-RADIO CUTOUT 9.24 IN LG -----	AR	
	0413553-2	COVER ASSY-RADIO CUTOUT 6.24 IN LG -----	AR	
	0413553-3	COVER ASSY-RADIO CUTOUT 3.24 IN LG -----	AR	
-26	0415025-1	INSERT-EYEBROW WITHOUT MIRROR INSTL -----	1	
	0415025-2	INSERT-EYEBROW USED WITH MIRROR INSTL -----	1	
-27	0415003-8	EYEBROW ASSY-INSTRUMENT PANEL -----	1	
		ATTACHING PARTS -----		
	S1023A6-12B	SCREW -----	7	
	S1067B1	WASHER -----	7	
		-----*		
-28	0400339-1	MIRROR ASSY-REAR VIEW -----	1	
		ATTACHING PARTS -----		
	MS21042L4	NUT -----	1	
	AN960-416	WASHER -----	2	
		-----*		
-29	0413470-1	COVER-ACCELEROMETER -----	1	B
		ATTACHING PARTS -----		
	S1021Z4-6	SCREW -----	4	
	NAS446-1-1	NUT -----	4	
		-----*		
-30	0413491-1	BRACKET-ACCELEROMETER -----	1	B
		ATTACHING PARTS -----		
	AN515B8R6	SCREW -----	3	
	MS21044N08	NUT -----	3	
		-----*		
-31	C661015-0102	ACCELEROMETER -----	1	B
		ATTACHING PARTS -----		
	AN515B8R10	SCREW -----	3	
	AN936A8	WASHER -----	3	
	AN340B8	NUT -----	3	
		-----*		

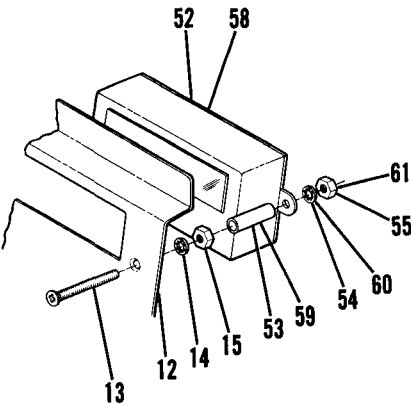
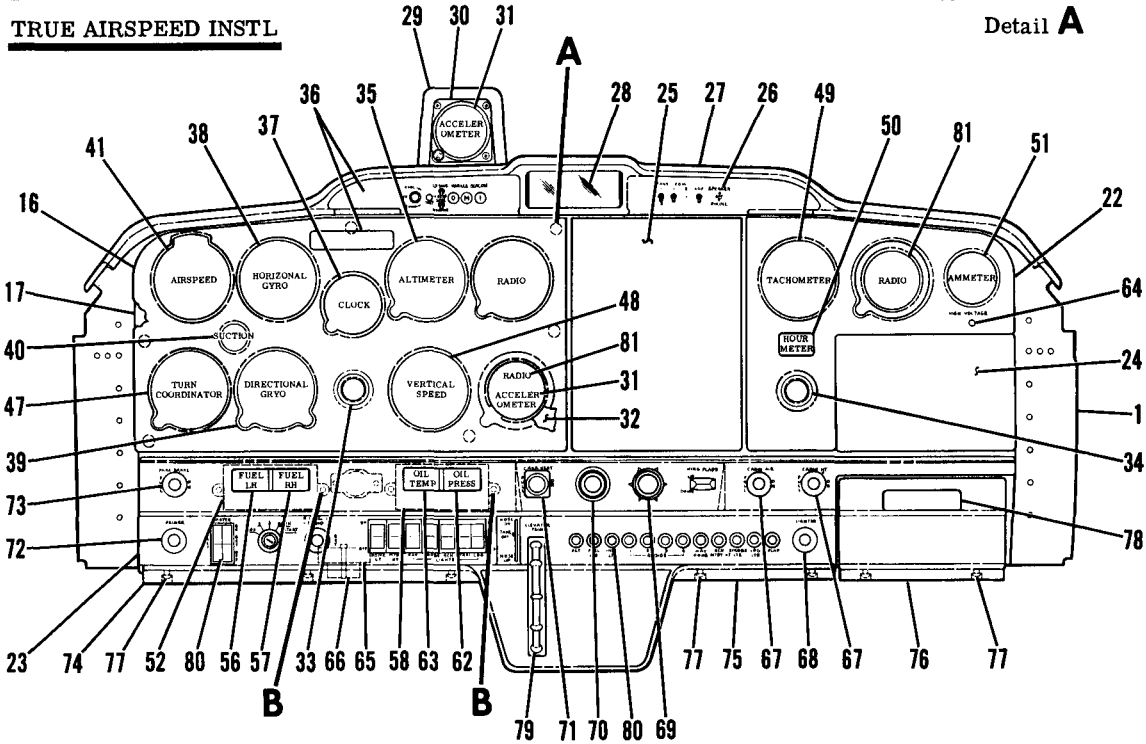
CONTINUED ON NEXT PAGE

Instruments (Cont)

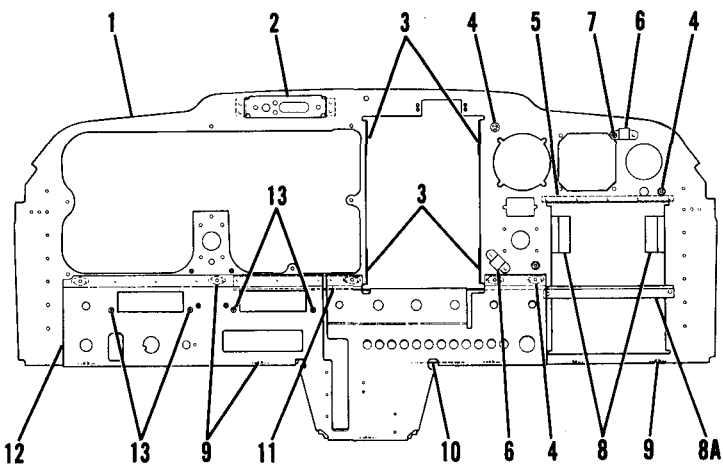


TRUE AIRSPEED INSTL

Detail A



Detail B



150 SERIAL 15077006 THRU 15078505
 F150 SERIAL F15001249 THRU F15001338
 A150 SERIAL A1500610 THRU A1500684
 FA150 SERIAL FA1500282 THRU FA1500311

Figure 47B. Instrument Panel Equipment Installation



FIGURE AND INDEX NO.	PART NUMBER	DESCRIPTION							UNITS PER ASSY	USABLE ON CODE	
		1	2	3	4	5	6	7			
47B-32	0413509-1	ADAPTER-ACCELEROMETER -----							1	B	
		ATTACHING PARTS -----									
	AN515B8R10	SCREW -----							3		
	AN936A8	WASHER -----							3		
	AN340B8	NUT -----							3		
		---*---									
-33	0760131-6	SUPPORT & COLLAR-CONTROL LOCK LH -----							1		
-34	0760131-5	SUPPORT & COLLAR-CONTROL LOCK RH -----							1		
		ATTACHING PARTS -----									
	AN515-6R10	SCREW -----							4		
	AN960-6L	WASHER -----							4		
	MS21044N06	NUT -----							4		
		---*---									
-35	C661071-0101	ALTIMETER-20,000 FT SENSITIVE -----							1	C	
	C661071-0102	ALTIMETER-20,000 FT FEET/MILLIBARS -----							1		
	C661025-0102	ALTIMETER-35,000 FT FEET/MILLIBARS -----							1		
	SEE FIG 73A	ENCODING & DUAL ALTIMETER INSTL -----							AR		
		ATTACHING PARTS -----									
	AN515B6R10	SCREW -----							3		
		---*---									
-36	SEE FIG 2C	PLACARDS -----							AR		
-37	C664508-0101	CLOCK-ELECTRIC -----							1		
		ATTACHING PARTS -----									
	AN515B6R12	SCREW -----							2		
		---*---									
-38	C661076-0102	*	GYRO-HORIZON -----						1		
	C661076-0101	*	GYRO-HORIZON -----						1		
	C661076-0103	*	GYRO-HORIZON -----						1		
	C661076-0105	*	GYRO-HORIZON -----						1	C	
			ATTACHING PARTS -----								
	AN515B6R6	SCREW -----							4		
		---*---									
-39	C661075-0103	%	GYRO-DIRECTIONAL -----						1		
	C661075-0104	%	GYRO-DIRECTIONAL -----						1		
	C661075-0101	%	GYRO-DIRECTIONAL -----						1		
	C661075-0106	%	GYRO-DIRECTIONAL -----						1	C	
	C661075-0105	%	GYRO-DIRECTIONAL WITH HEADING REFERENCE BUG -----						1		
			ATTACHING PARTS -----								
	AN515B6R8	SCREW -----							4		
		---*---									
-40	C668509-0101	GAGE-SUCTION -----							1		
-41	C661064-0101	INDICATOR-AIRPEED 150 & F150 ONLY -----							1	D	
	C661064-0201	INDICATOR-AIRPEED A150 & FA150 ONLY -----							1	B	
		ATTACHING PARTS -----									
	AN515B6R10	SCREW -----							4		
		---*---									
-42	C661065-0101	TRUE AIRSPEED INSTL -----							NP		
	C661065-0102	INDICATOR-TRUE AIRSPEED 150 & F150 ONLY -----							1	D	
		INDICATOR-TRUE AIRSPEED A150 & FA150 ONLY -----							1	B	
		ATTACHING PARTS -----									
-43	AN515B6R16	SCREW -----							4		
-44	0700162-1	RETAINER ASSY -----							1		
-45	S2234-1	RING ASSY 150 & F150 ONLY -----							1	D	
	S2234-2	RING ASSY A150 & FA150 ONLY -----							1	B	
-46	0700162-3	SPACER .050 THICK -----							AR		
	0700162-4	SPACER .060 THICK -----							AR		
	0700162-6	SPACER .071 THICK -----							AR		
	0700162-7	SPACER .040 THICK -----							AR		
		---*---									
-47	C661003-0504	INDICATOR-TURN COORDINATOR -----							1		
	S1413N2	INDICATOR-TURN & BANK -----							1		
		ATTACHING PARTS -----									
	AN515B6R16	SCREW -----							4		
	AN936A6B	WASHER -----							4		
		---*---									
-48	C661080-0101	INDICATOR-VERTICAL SPEED -----							1		
		ATTACHING PARTS -----									
	AN507B632R12	SCREW -----							3		
	S1066B1	WASHER -----							3		
		---*---									

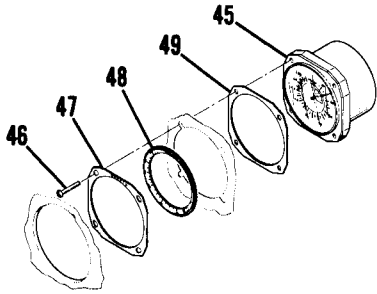
CONTINUED ON NEXT PAGE

FIGURE AND INDEX NO.	PART NUMBER	DESCRIPTION	UNITS PER ASSY							USABLE ON CODE
			1	2	3	4	5	6	7	
47B-49	C668020-0113	TACHOMETER ----- ATTACHING PARTS -----							1	E
	AN515B6R10	SCREW -----							4	
	NAS43DD3-22	SPACER -----							4	
	AN936A8	WASHER -----							4	
	AN340B8	NUT -----							4	
	S1605-3	-----*----- SHAFT-TACHOMETER -----							1	
-50	C664502-0101	HOURMETER ----- ATTACHING PARTS -----							1	
	AN515B6R12	SCREW -----							4	
	NAS43DD1-26	SPACER -----							4	
	AN936A6	WASHER -----							4	
	AN340B6	NUT -----							4	
	S1320-5	-----*----- AMMETER-60 AMP -----							1	
	0413427-3	SPACER-AMMETER -----							1	
-52	C669511-0101	INSTRUMENT CLUSTER ----- ATTACHING PARTS -----							1	
-53	NAS43DD1-56	SPACER -----							2	
-54	AN936A6	WASHER -----							2	
-55	AN340B6	NUT -----							2	
	441413	-----*----- GAGE-FUEL LH SW -----							1	
-57	441412	GAGE-FUEL RH SW -----							1	
-58	C669512-0103 **	INSTRUMENT CLUSTER ----- ATTACHING PARTS -----							1	
-59	NAS43DD1-56	SPACER -----							2	
-60	AN936A6	WASHER -----							2	
-61	AN340B6	NUT -----							2	
	444697	-----*----- GAGE-OIL PRESSURE SW -----							1	
-63	442907-1 **	GAGE-OIL TEMP SW -----							1	
-64	S2135-1	LIGHT ASSY-OVERVOLTAGE -----							1	
-65	C5930G1-0101	SENSOR-OVERVOLTAGE -----							1	
-66	TVA-1315	CAPACITOR -----							1	
	S2209-2	ATTACHING PARTS ----- TIE STRAP -----							1	
	S1239-46	-----*----- CONTROL-CABIN HEAT, CABIN AIR -----							2	
-68	0513039-7	CIGAR LIGHTER -----							1	
	L4858-1	PLUG-HEATER CUE -----							1	
	S1982-1	KNOB-CIGAR LIGHTER -----							1	
	155109A	FUSEHOLDER-CIGAR LIGHTER -----							1	
	SFE-9	FUSE-CIGAR LIGHTER -----							1	
-69	S1234-11	CONTROL-MIXTURE -----							1	
-70	C299505-0202S	CONTROL-THROTTLE -----							1	
	S1748-1	KNOB-THROTTLE -----							1	
	1213646-2	WASHER BETWEEN PANEL COVER & CONTROL -----							1	
-71	S1230-19	CONTROL-CARBURETOR HEAT -----							1	
-72	C291502-0103	PRIMER ASSY-FUEL -----							1	
	S1974-1	KNCB-PRIMER -----							1	
-73	S1239-49	CONTROL-PARKING BRAKE -----							1	
-74	0413551-1	PAD-PROTECTION LH -----							1	
-75	0413551-2	PAD-PROTECTION CENTER -----							1	
-76	0413551-3	PAD-PROTECTION RH -----							1	
	S1021Z6-8	ATTACHING PARTS ----- SCREW -----							3	
	SEE FIG 49A	-----*----- MAP CASE INSTL -----							1	
-79	SEE FIG 72	ELEVATOR TRIM CONTROL INSTL -----							1	

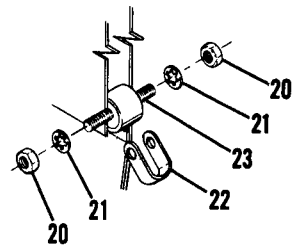
CONTINUED ON NEXT PAGE

FIGURE AND INDEX NO.	PART NUMBER	DESCRIPTION	UNITS PER ASSY	USABLE ON CODE
47B-80 -81	SEE FIG 49B	<p style="text-align: center;">1 2 3 4 5 6 7</p> <p>SWITCH & CIRCUIT BREAKER INSTL ----- RADIO INSTL SEE CESSNA ELECTRONICS MANUAL -----</p> <p>NOTE. □THIS PART NUMBER MUST HAVE A SECOND DASH NUMBER ADDED TO DENOTE COLOR. REFER TO HOW TO ORDER INTERIOR PARTS-PAGE VII.</p> <p>NOTE. *THESE GYROS ARE PHYSICALLY & FUNCTIONALLY INTERCHANGABLE.</p> <p>NOTE. †THESE GYROS ARE PHYSICALLY & FUNCTIONALLY INTERCHANGABLE.</p> <p>NOTE. **WHEN INITIALLY ORDERING THIS PART FOR AIRCRAFT PRIOR TO SERIALS 15077216 & A1500631 A NEW SENDING UNIT, PART NUMBER S1630-4, MUST BE INSTALLED.</p> <p>A---150 SERIAL 15077006 THRU 15078505 F150 SERIAL F15001249 THRU F15001338 A150 SERIAL A1500610 THRU A1500684 FA150 SERIAL FA1500282 THRU FA1500311 B---A150 SERIAL A1500610 THRU A1500684 FA150 SERIAL FA1500282 THRU FA1500311 C---150 SERIAL 15077006 THRU 15078505 A150 SERIAL A1500610 THRU A1500684 D---150 SERIAL 15077006 THRU 15078505 F150 SERIAL F15001249 THRU F15001338 E---150 SERIAL 15077006 THRU 15078505 F150 SERIAL F15001249 THRU F15001338 A150 SERIAL A1500610 THRU A1500684</p>	1 AR	

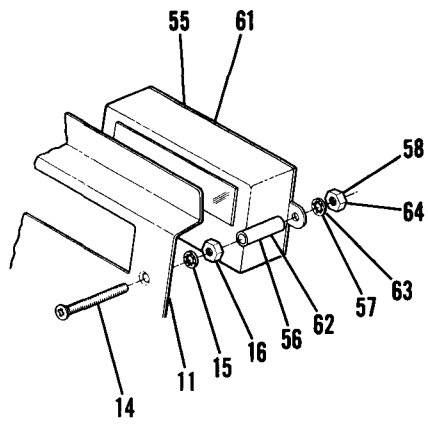
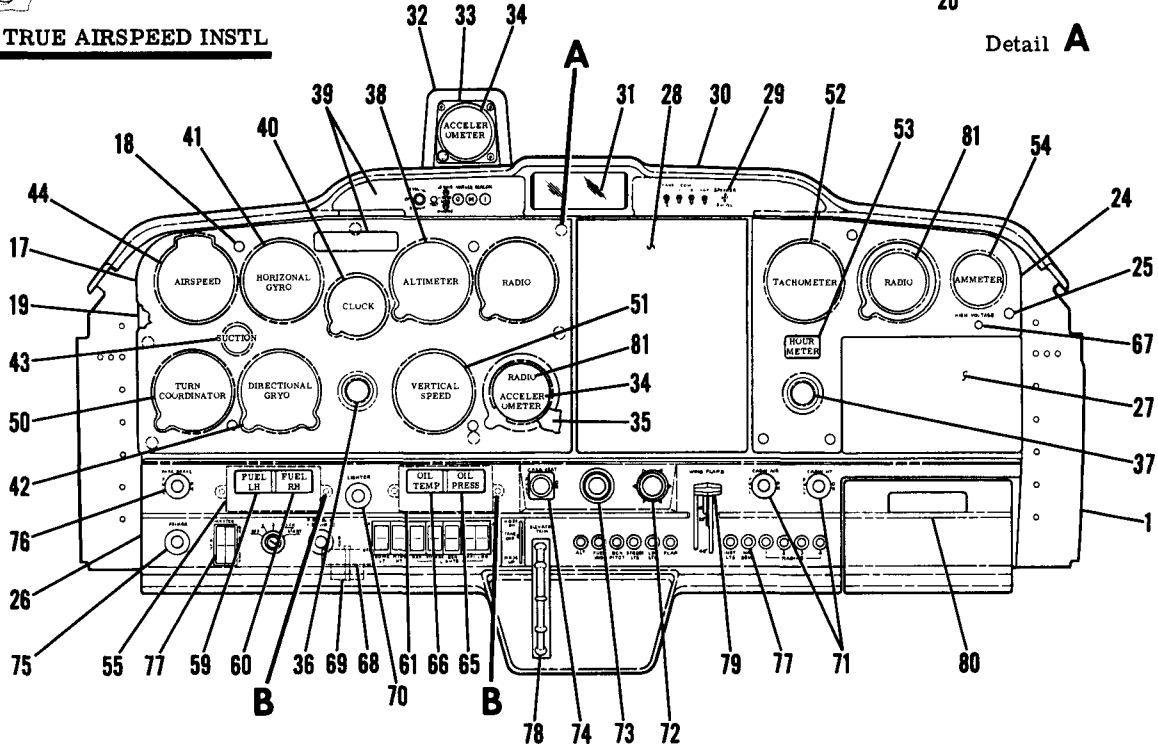
Instruments (Cont)



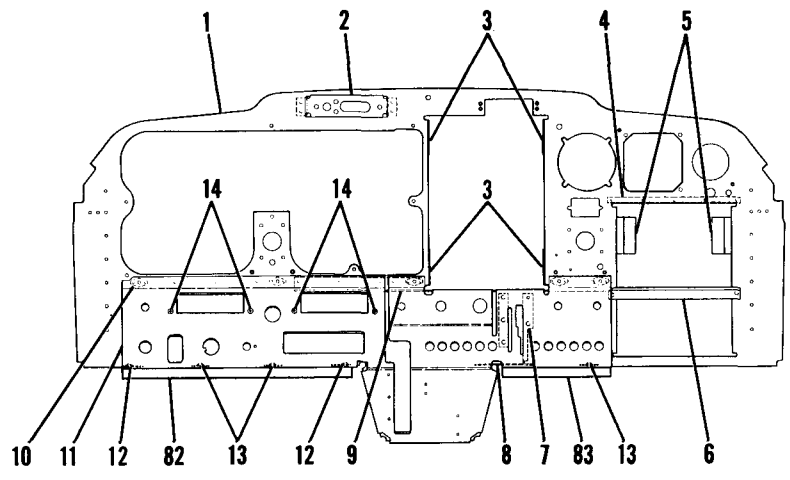
TRUE AIRSPEED INSTL



Detail A



Detail B



**150 SERIAL 15078506 & ON
 F150 SERIAL F15001339 & ON
 A150 SERIAL A1500685 & ON
 FA150 SERIAL FA1500312 & ON**

Figure 47C. Instrument Panel Equipment Installation

FIGURE AND INDEX NO.	PART NUMBER	DESCRIPTION	UNITS PER ASSY	USABLE ON CODE
		1 2 3 4 5 6 7		
47C-		INSTRUMENT PANEL & EQUIPMENT INSTALLATION -----	NP	A
- 1	0413540-3	PANEL ASSY-STATIONARY INSTRUMENT -----	1	
- 2	0413534-1	BRACKET-MARKER BEACON -----	1	
- 3	S2092-3	FASTENER-HOOK BKI -----	AR	
- 4	0413542-1	STIFFENER -----	1	
- 5	0413557-1	BRACKET ASSY -----	2	
- 6	0413538-1	STIFFENER -----	1	
- 7	0460208-1	BRACKET-FLAP INDICATOR -----	1	
- 8	0413543-2	STRAP -----	1	
- 9	0413550-1	STIFFENER -----	1	
-10	S1863-2	NUTPLATE -----	5	
-11	0413558-1	PANEL ASSY-LOWER -----		
-12	S1862-1A	NUTPLATE -----	2	
-13	S1863-2A	NUTPLATE -----	3	
-14	AN507-632R24	SCREW -----	4	
-15	AN936A6	WASHER -----	4	
-16	AN340B6	NUT -----	4	
-17	0413544-9	COVER ASSY-SHOCK PANEL -----	1	
		ATTACHING PARTS -----		
-18	1513174-3	NUT -----	4	
		-----*		
-19	0413459-8	PANEL ASSY-SHOCK MOUNTED INSTRUMENT -----	1	
		ATTACHING PARTS -----		
-20	MS2508B2	NUT -----	14	
-21	AN936A8	WASHER -----	14	
-22	0413247	STRAP-GROUND -----	2	
-23	0413523-4	SHOCKMOUNT -----	7	
		-----*		
-24	0413544-11	COVER-STATIONARY INSTRUMENT RH -----	1	
		ATTACHING PARTS -----		
-25	1513174-3	NUT -----	4	
		-----*		
-26	0413559-1	COVER-LOWER INSTRUMENT PANEL -----	1	
		ATTACHING PARTS -----		
	S1021Z6-8	SCREW -----	6	
		-----*		
-27	0413554-1	COVER ASSY-RADIO CUTOUT RH -----	1	
	S2092-3	FASTENER-HOOK BKI -----	AR	
-28	0413553-1	COVER ASSY-RADIO CUTOUT 9.24 IN LG -----	AR	
	0413553-2	COVER ASSY-RADIO CUTOUT 6.24 IN LG -----	AR	
	0413553-3	COVER ASSY-RADIO CUTOUT 3.24 IN LG -----	AR	
-29	0415025-1	INSERT-EYEBROW WITHOUT MIRROR INSTL -----	1	
	0415025-2	INSERT-EYEBROW USED WITH MIRROR INSTL -----	1	
-30	0415003-8	EYEBROW ASSY-INSTRUMENT PANEL -----	1	
		ATTACHING PARTS -----		
	S1023A6-12B	SCREW -----	7	
	S1067B1	WASHER -----	7	
		-----*		
-31	0400339-1	MIRROR ASSY-REAR VIEW -----	1	
		ATTACHING PARTS -----		
	MS21042L4	NUT -----	1	
	AN960-416	WASHER -----	1	
		-----*		
-32	0413470-1	COVER-ACCELEROMETER -----	1	B
		ATTACHING PARTS -----		
	S102124-6	SCREW -----	4	
	NAS446-1-1	NUT -----	4	
		-----*		
-33	0413491-1	BRACKET-ACCELEROMETER -----	1	B
		ATTACHING PARTS -----		
	AN515B8R6	SCREW -----	3	
	MS21044N08	NUT -----	3	
		-----*		
-34	C661015-0102	ACCELEROMETER -----	1	B
		ATTACHING PARTS -----		
	AN515B8R10	SCREW -----	3	
	AN936A8	WASHER -----	3	
	AN340B8	NUT -----	3	
		-----*		

CONTINUED ON NEXT PAGE

FIGURE AND INDEX NO.	PART NUMBER	DESCRIPTION	UNITS PER ASSY	USABLE ON CODE
47C-35	0413509-1	ADAPTER-ACCELEROMETER ----- ATTACHING PARTS -----	1	B
	AN515B6R10	SCREW -----	3	
	AN936A8	WASHER -----	3	
	AN340B8	NUT -----	3	
		-----*		
-36	0760131-6	SUPPORT & COLLAR-CONTROL LOCK LH -----	1	
-37	0760131-5	SUPPORT & COLLAR-CONTROL LOCK RH -----	1	
		ATTACHING PARTS -----		
	AN515-6R10	SCREW -----	4	
	AN960-6L	WASHER -----	4	
	NAS679A06	NUT -----	4	
		-----*		
-38	C661071-0101	ALTIMETER-20,000 FT SENSITIVE -----	1	C
	C661071-0102	ALTIMETER-20,000 FT FEET/MILLIBARS -----	1	
	6661025-0102	ALTIMETER-35,000 FT FEET/MILLIBARS -----	1	
	SEE FIG 73A	ENCODING & DUAL ALTIMETER INSTL -----	AR	
		ATTACHING PARTS -----		
	AN5156R10	SCREW -----	3	
		-----*		
-39	SEE FIG 2D	PLACARDS -----	AR	
-40	C664508-0101	CLOCK-ELECTRIC -----	1	
		ATTACHING PARTS -----		
	AN515B6R12	SCREW -----	2	
		-----*		
-41	C661076-0102	* GYRO-HORIZON -----	1	
	C661076-0101	* GYRO-HORIZON -----	1	
	C661076-0103	* GYRG-HORIZON -----	1	
	C661076-0105	* GYRO-HORIZON -----	1	
		ATTACHING PARTS -----		
	AN515B6R6	SCREW -----	4	
		-----*		
-42	C661075-0103	% GYRO-DIRECTIONAL -----	1	
	C661075-0104	% GYRO-DIRECTIONAL -----	1	
	C661075-0101	% GYRO-DIRECTIONAL -----	1	
	C661075-0106	% GYRO-DIRECTIONAL -----	1	C
	C661075-0105	% GYRO-DIRECTIONAL WITH HEADING REFERENCE BUG -----	1	
		ATTACHING PARTS -----		
	AN515B6R8	SCREW -----	4	
		-----*		
-43	C668509-0101	GAGE-SUCTION -----	1	
-44	C661064-0101	INDICATOR-AIRPEED 150 & F150 ONLY -----	1	D
	C661064-0201	INDICATOR-AIRPEED A150 & FA150 ONLY -----	1	B
		ATTACHING PARTS -----		
	AN515B6R10	SCREW -----	4	
		-----*		
-45	C661065-0101	TRUE AIRSPEED INSTL -----	NP	
	C661065-0102	INDICATOR-TRUE AIRSPEED 150 & F150 ONLY -----	1	D
		INDICATOR-TRUE AIRSPEED A150 & FA150 ONLY -----	1	B
		ATTACHING PARTS -----		
	AN515B6R16	SCREW -----	4	
-47	0700162-1	RETAINER ASSY -----	1	
-48	S2234-1	RING ASSY 150 & F150 ONLY -----	1	D
	S2234-2	RING ASSY A150 & FA150 ONLY -----	1	B
-49	0700162-3	SPACER .050 THICK -----	AR	
	0700162-4	SPACER .060 THICK -----	AR	
	0700162-6	SPACER .071 THICK -----	AR	
	0700162-7	SPACER .040 THICK -----	AR	
		-----*		
-50	C661003-0504	INDICATOR-TURN COORDINATOR -----	1	
	S1413N2	INDICATOR-TURN & BANK -----	1	
		ATTACHING PARTS -----		
	AN515B6R12	SCREW -----	4	
	AN936A6B	WASHER -----	4	
		-----*		

CONTINUED ON NEXT PAGE

FIGURE AND INDEX NO.	PART NUMBER	DESCRIPTION	UNITS PER ASSY	USABLE ON CODE
		1 2 3 4 5 6 7		
47C-51	C661080-0101	INDICATOR-VERTICAL SPEED -----	1	
		ATTACHING PARTS -----		
	AN5078632R12	SCREW -----	3	
	S1066B1	WASHER -----	3	
		-----*		
-52	C668020-0113	TACHOMETER -----	1	E
		ATTACHING PARTS -----		
	AN51588R10	SCREW -----	4	
	NAS43DD3-22	SPACER -----	4	
	AN936A8	WASHER -----	4	
	AN340B8	NUT -----	4	
		-----*		
	S1605-3	SHAFT-TACHOMETER -----	1	
-53	C664502-0101	HOURLY-METER -----	1	
		ATTACHING PARTS -----		
	AN51586R12	SCREW -----	4	
	NAS43DD1-26	SPACER -----	4	
	AN936A6	WASHER -----	4	
	AN340B6	NUT -----	4	
		-----*		
-54	S1320-5	AMMETER-60 AMP -----	1	
	0413427-3	SPACER-AMMETER -----	1	
-55	C669511-0101	INSTRUMENT CLUSTER -----	1	
		ATTACHING PARTS -----		
-56	NAS43DD1-56	SPACER -----	2	
-57	AN936A6	WASHER -----	2	
-58	AN340B6	NUT -----	2	
		-----*		
-59	441413	GAGE-FUEL LH SW -----	1	
-60	441412	GAGE-FUEL RH SW -----	1	
-61	C669512-0103	INSTRUMENT CLUSTER -----	1	
		ATTACHING PARTS -----		
-62	NAS43DD1-56	SPACER -----	2	
-63	AN936A6	WASHER -----	2	
-64	AN340B6	NUT -----	2	
		-----*		
-65	444697	GAGE-OIL PRESSURE SW -----	1	
-66	442907-1	GAGE-OIL TEMP SW -----	1	
-67	S2135-1	LIGHT ASSY-OVERVOLTAGE -----	1	
-68	C593001-0101	SENSOR-OVERVOLTAGE -----	1	
-69	TVA-1315	CAPACITOR -----	1	
		ATTACHING PARTS -----		
	S2209-2	TIE STRAP -----	1	
		-----*		
-70	0513039-7	CIGAR LIGHTER -----	1	
	L4858-1	PLUG-HEATER CUE -----	1	
	S1982-1	KNOB-CIGAR LIGHTER -----	1	
	155109A	FUSEHOLDER-CIGAR LIGHTER -----	1	
	SFE-9	FUSE-CIGAR LIGHTER -----	1	
-71	S1239-46	CONTROL-CABIN HEAT, CABIN AIR -----	2	
-72	9862010-3	CONTROL-MIXTURE -----	1	
-73	9863053-7	CONTROL-THROTTLE -----	1	
	1213646-2	WASHER BETWEEN PANEL COVER & CONTROL -----	1	
-74	S1230-19	CONTROL-CARBURETOR HEAT -----	1	
-75	C291502-0103	PRIMER ASSY-FUEL -----	1	
	S1974-1	KNOB-PRIMER -----	1	
-76	S1239-49	CONTROL-PARKING BRAKE -----	1	
-77	SEE FIG 48C	SWITCH & CIRCUIT BREAKER INSTL -----	1	
-78	SEE FIG 72	ELEVATOR TRIM CONTROL INSTL -----	1	
-79	SEE FIG 70A	FLAP POSITION INDICATOR INSTL -----	1	
-80	SEE FIG 49A	MAP CASE INSTL -----	1	
-81		RADIO INSTL SEE CESSNA ELECTRONICS MANUAL -----	AR	

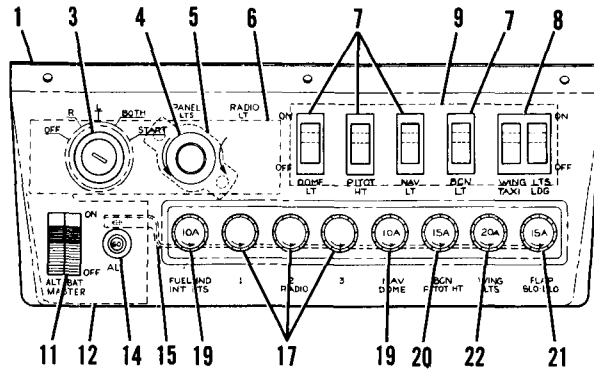
CONTINUED ON NEXT PAGE

FIGURE AND INDEX NO.	PART NUMBER	DESCRIPTION							UNITS PER ASSY	USABLE ON CODE
		1	2	3	4	5	6	7		
47C-82	0513292-1	PROTECTOR ASSY-LH -----							1	
	S102126-6	ATTACHING PARTS -----							4	
-83	0513292-2	PROTECTOR ASSY-RH -----							1	
	S102126-6	ATTACHING PARTS -----							2	
<p>NOTE. THIS PART NUMBER MUST HAVE A SECOND DASH NUMBER ADDED TO DENOTE COLOR. REFER TO HOW TO ORDER INTERIOR PARTS-PAGE VII.</p> <p>NOTE. *THESE GYRGS ARE PHYSICALLY & FUNCTIONALLY INTERCHANGABLE.</p> <p>NOTE. †THESE GYRGS ARE PHYSICALLY & FUNCTIONALLY INTERCHANGABLE.</p> <p>A---150 SERIAL 15078506 & ON F150 SERIAL F15001339 & ON A150 SERIAL A1500685 & ON FA150 SERIAL FA1500312 & ON</p> <p>B---A150 SERIAL A1500685 & ON FA150 SERIAL FA1500312 & ON</p> <p>C---150 SERIAL 15078506 & ON A150 SERIAL A1500685 & ON</p> <p>D---150 SERIAL 15078506 & ON F150 SERIAL F15001339 & ON</p> <p>E---150 SERIAL 15078506 & ON F150 SERIAL F15001339 & ON A150 SERIAL A1500685 & ON</p>										

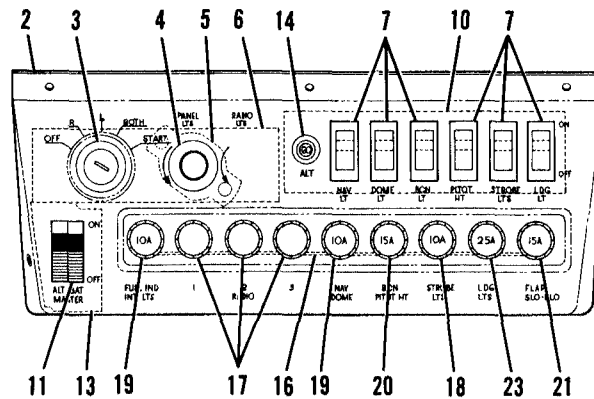
FIGURE AND INDEX NO.	PART NUMBER		DESCRIPTION	UNITS PER ASSY	USABLE ON CODE
			1 2 3 4 5 6 7		
48 -			SWITCH PANEL ASSEMBLY -----	NP	G
- 1	0413462-203	□	PANEL-SWITCH -----	1	A
- 2	0413462-205	□	PANEL-SWITCH -----	1	C
	0413462-207	□	PANEL-SWITCH -----	1	D
- 3	C292501-0102	*	KIT-IGNITION SWITCH WEU C292501-0104 -----	1	E
	C292501-0104	*	KIT-IGNITION SWITCH -----	1	F
	0413463-3		SHIELD-IGNITION SWITCH -----	1	
- 4	S1880-2		RHEOSTAT-INSTRUMENT LIGHT -----	1	
	S1981-3		KNOB ASSEMBLY-RHEOSTAT -----	1	
			ATTACHING PARTS		
	AN56586H3		SCREW-SET -----	1	
			-----*		
- 5	CA-2		CIRCUIT BREAKER SPTD -----	1	
			ATTACHING PARTS		
	AN507-1032-26		SCREW -----	2	
	NAS43DD3-71		SPACER -----	2	
	MS25082-12		NUT -----	2	
			-----*		
- 6	0413480-2		BRACKET-IGNITION SWITCH -----	1	
- 7	S2160-1		SWITCH -----	4	A
	S2160-1		SWITCH -----	6	B
	S2161-1		SWITCH-DUMMY -----	AR	
- 8	S2160-4		SWITCH-DOUBLE -----	1	A
	S2161-2		SWITCH-DUMMY -----	1	A
- 9	0413462-208		SPACER-SWITCH -----	1	A
-10	0413462-209		SPACER-SWITCH -----	1	B
-11	S1690-1-1		SWITCH-MASTER -----	1	H
	S1994-1-1	%	SWITCH-MASTER -----	1	K
			ATTACHING PARTS		
	AN507-632R5		SCREW -----	2	H
			-----*		
	0770719-2		DIODE ASSY-MASTER SWITCH ON BACK OF MASTER SWITCH -----	1	
-11A	S1843-1	%	BEZEL-MASTER SWITCH MOUNTING -----	1	K
-12	0413479-1		BRACKET-MASTER SWITCH -----	1	A
-13	0413479-2		BRACKET-MASTER SWITCH -----	1	J
	0413462-12		SPACER-MASTER SWITCH -----	1	K
			ATTACHING PARTS		
	AN507-632R6		SCREW -----	1	J
	MS21044N06		NUT -----	1	J
			-----*		
-14	S1596-60L		CIRCUIT BREAKER 60 AMP -----	1	
	S2122-2		NUT-CIRCUIT BREAKER BRIGHT -----	AR	
	S2122-1		NUT-CIRCUIT BREAKER BLACK -----	AR	
-15	0470008-1		BAR-BUS -----	1	A
-16	0470007-1		BAR-BUS -----	1	B
-17	S1090-1		FUSEHOLDER-RADIO -----	3	
	S1090-10		CAP -----	1	
-18	S1090-3		FUSEHOLDER-10 AMP -----	1	B
	S1090-12		CAP -----	1	B
	S1091-10		FUSE-10 AMP -----	1	B
-19	S1090-3		FUSEHOLDER-10 AMP -----	2	
	S1090-12		CAP -----	1	
	S1091-10		FUSE-10 AMP -----	2	

CONTINUED ON NEXT PAGE

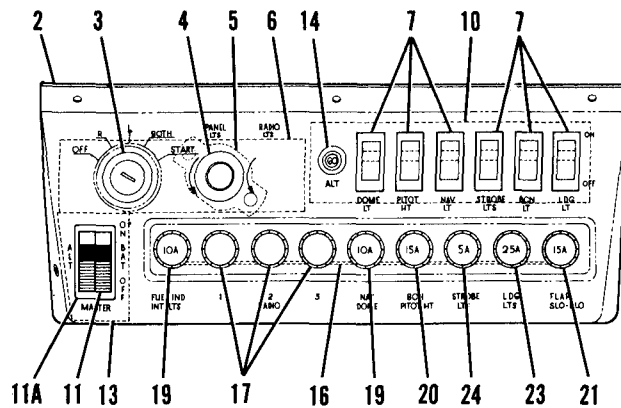
Instruments (Cont)



1970 MODELS



1971 & 1972 MODELS



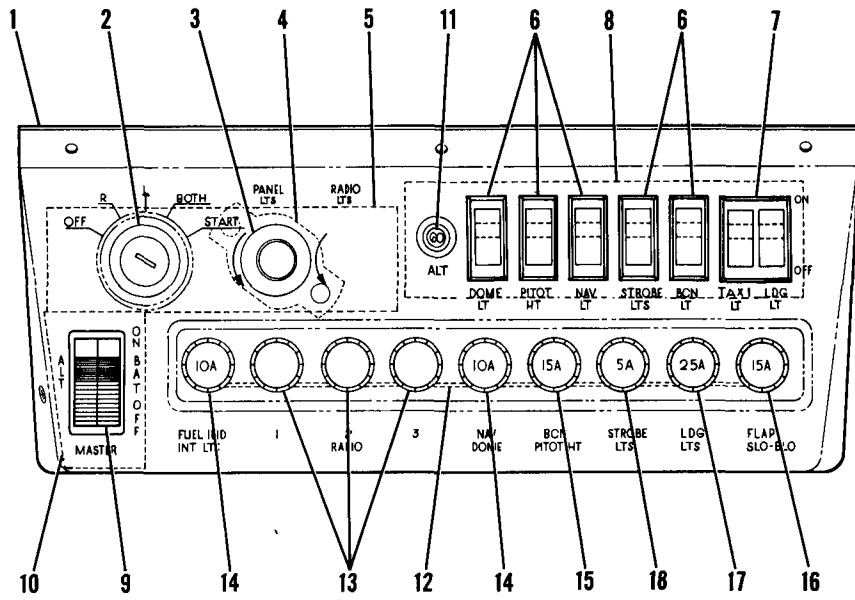
1973 MODELS

150 SERIAL 15071129 THRU 15074850
 F150 SERIAL F15000530 THRU F15001013
 A150 SERIAL A1500001 THRU A1500429
 FA150 SERIAL FA1500001 THRU FA1500211

Figure 48. Switch Panel Assembly

FIGURE AND INDEX NO.	PART NUMBER	DESCRIPTION	UNITS PER ASSY	USABLE ON CODE	
48 -20 -21 -22 -23 -24	S1090-4	FUSEHOLDER-15 AMP -----	1		
	S1090-13	CAP -----	1		
	S1091-15	FUSE-15 AMP BOTH FLASHING BEACON & HEATED PITOT INSTL ---	1		
	S1091-10	FUSE-10 AMP FLASHING BEACON ONLY -----	1		
	S1090-4	FUSEHOLDER-15 AMP -----	1		
	S1090-13	CAP -----	1		
	S1627-15	FUSE-15 AMP SLO-BLO -----	1		
	S1090-5	FUSEHOLDER-20 AMP -----	1	A	
	S1090-14	CAP -----	1	A	
	S1091-20	FUSE-20 AMP -----	1	A	
	S1090-6	FUSEHOLDER-25 AMP -----	1	B	
	S1090-15	CAP -----	1	B	
	S1091-25	FUSE-25 AMP -----	1	B	
	S1090-2	FUSEHOLDER-5 AMP -----	1	D	
	S1090-11	CAP -----	1	D	
	S1091-5	FUSE-5 AMP -----	1	D	
	<p>NOTE. THIS PART NUMBER MUST HAVE A SECOND DASH NUMBER ADDED TO DENOTE COLOR. REFER TO HOW TO ORDER INTERIOR PARTS--PAGE VII.</p> <p>NOTE. *THIS KIT ALSO INCLUDES DOORLOCK & KEYS</p> <p>NOTE. S1994-1-1 MASTER SWITCH & S1843-1 BEZEL MUST BE USED WITH 0413462-207 SWITCH PANEL.</p> <p>A---150 SERIAL 15071129 THRU 15072003 F150 SERIAL F15000530 THRU F15000658 A150 SERIAL A1500001 THRU A1500226 FA150 SERIAL FA1500001 THRU FA1500081</p> <p>B---150 SERIAL 15072004 THRU 15074850 F150 SERIAL F15000659 THRU F15001013 A150 SERIAL A1500227 THRU A1500429 FA150 SERIAL FA1500082 THRU FA1500211</p> <p>C---150 SERIAL 15072004 THRU 15073658 F150 SERIAL F15000659 THRU F15000863 A150 SERIAL A1500227 THRU A1500342 FA150 SERIAL FA1500082 THRU FA1500166</p> <p>D---150 SERIAL 15073659 THRU 15074850 F150 SERIAL F15000864 THRU F15001013 A150 SERIAL A1500343 THRU A1500429 FA150 SERIAL FA1500167 THRU FA1500211</p> <p>E---150 SERIAL 15071129 THRU 15074427 F150 SERIAL F15000530 THRU F15001013 A150 SERIAL A1500001 THRU A1500389 FA150 SERIAL FA1500001 THRU FA1500211</p> <p>F---150 SERIAL 15074428 THRU 15074850 A150 SERIAL A1500390 THRU A1500429</p> <p>G---150 SERIAL 15071129 THRU 15074850 F150 SERIAL F15000530 THRU F15001013 A150 SERIAL A1500001 THRU A1500429 FA150 SERIAL FA1500001 THRU FA1500211</p> <p>H---150 SERIAL 15071129 THRU 15073961 F150 SERIAL F15000530 THRU F15000893, F15000896, F15000898, F15000899, F15000900 & F15000903 A150 SERIAL A1500001 THRU A1500361 FA150 SERIAL FA1500001 THRU FA1500191</p> <p>J---150 SERIAL 15072004 THRU 15073961 F150 SERIAL F15000659 THRU F15000893, F15000896, F15000898, F15000899, F15000900 & F15000903 A150 SERIAL A1500227 THRU A1500361 FA150 SERIAL FA1500082 THRU FA1500191</p> <p>K---150 SERIAL 15073962 THRU 15074850 F150 SERIAL F15000894, F15000895, F15000897 F15000901, F15000902 & F15000904 THRU F15001013 A150 SERIAL A1500362 THRU A1500429 FA150 SERIAL FA1500192 THRU FA1500211</p>				

Instruments (Cont)

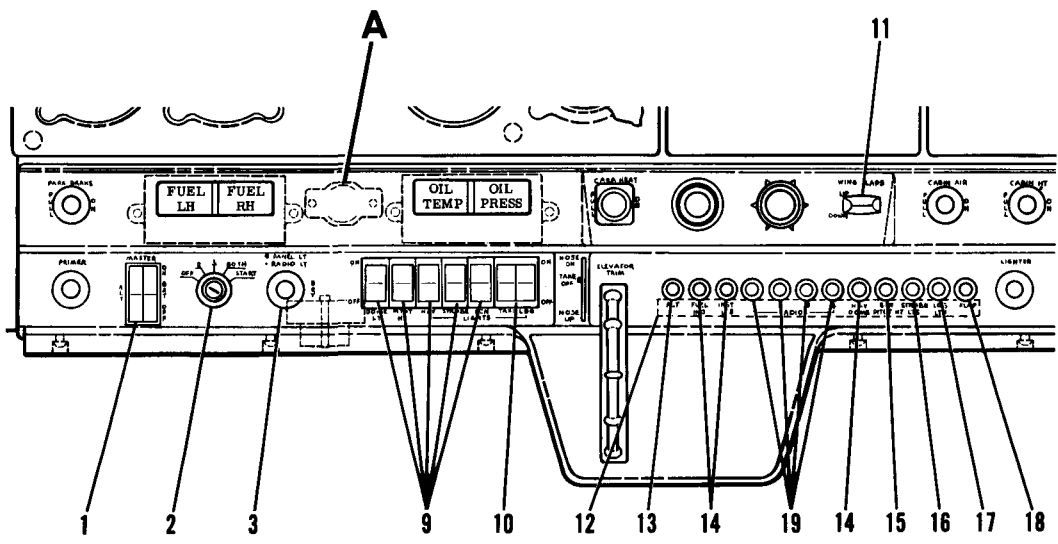
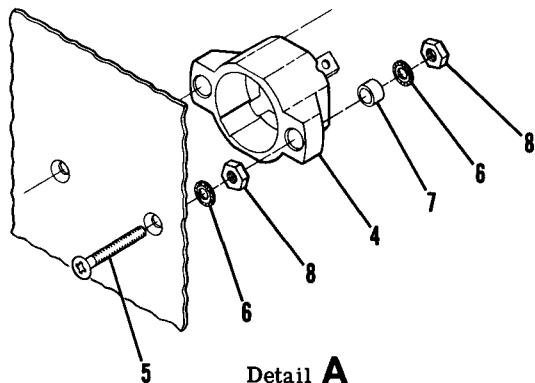


150 SERIAL 15074851 THRU 15077005
 F150 SERIAL F15001014 THRU F15001248
 A150 SERIAL A1500430 THRU A1500609
 FA150 SERIAL FA1500212 THRU FA1500281

Figure 48A. Switch Panel Assembly

FIGURE AND INDEX NO.	PART NUMBER	DESCRIPTION	UNITS PER ASSY	USABLE ON CODE
		1 2 3 4 5 6 7		
48A-		SWITCH PANEL ASSEMBLY -----	NP	A
- 1	0413462-19 □	PANEL-SWITCH -----	1	B
	0413462-22 □	PANEL-SWITCH -----	1	C
- 2	C292501-0104 *	KIT-IGNITION SWITCH -----	1	
	0413462-3	SHIELD-IGNITION SWITCH -----	1	
- 3	S1880-2	RHEOSTAT-INSTRUMENT LIGHT -----	1	
	S1981-3	KNOB ASSEMBLY-RHEOSTAT -----	1	
		ATTACHING PARTS		
	AN565B8H3	SCREW-SET -----	1	
		---*---		
- 4	CA-2	CIRCUIT BREAKER SPTD -----	1	
		ATTACHING PARTS		
	AN507-1032-26	SCREW -----	2	
	NAS430D3-71	SPACER -----	2	
	MS25082-12	NUT -----	2	
		---*---		
- 5	0413480-2	BRACKET-IGNITION SWITCH -----	1	
- 6	S2160-1	SWITCH -----	5	
	S2161-1	SWITCH-DUMMY -----	AR	
- 7	S2160-5	SWITCH LANDING LIGHT INSTALLATION ONLY -----	1	
	S2160-4	SWITCH LANDING LIGHT & TAXI LIGHT INSTALLATION -----	1	
	S2161-2	SWITCH-DUMMY LANDING & TAXI LIGHT LOCATION -----	AR	
- 8	0413462-20	SPACER-SWITCH -----	1	
- 9	S1994-1-1	SWITCH-MASTER -----	1	
	S1843-1	BEZEL-MASTER SWITCH -----	1	
	0770719-2	DIODE ASSY-MASTER SWITCH ON BACK OF MASTER SWITCH -----	1	
-10	0413462-12	SPACER-MASTER SWITCH -----	1	
-11	S1596-60L	CIRCUIT BREAKER -----	1	
	S2122-2	NUT-CIRCUIT BREAKER BRIGHT -----	1	
	S2122-1	NUT-CIRCUIT BREAKER BLACK -----	1	
-12	0470007-1	BAR-BUS -----	1	
-13	S1090-1	FUSEHOLDER-RADIO -----	3	
	S1090-10	CAP -----	1	
-14	S1090-3	FUSEHOLDER-10 AMP -----	2	
	S1090-12	CAP -----	1	
	S1091-10	FUSE -----	2	
-15	S1090-4	FUSEHOLDER-15 AMP -----	1	
	S1090-13	CAP -----	1	
	S1091-15	FUSE-15 AMP USED WITH BOTH FLASHING BEACON & PITOT INSTL OR PITOT INSTL ONLY -----	1	
	S1091-10	FUSE-10 AMP USED WITH FLASHING BEACON ONLY -----	1	
-16	S1090-4	FUSEHOLDER-15 AMP -----	1	
	S1090-13	CAP -----	1	
	S1627-15	FUSE-15 AMP SLO BLO -----	1	
-17	S1090-6	FUSEHOLDER-25 AMP -----	1	
	S1090-15	CAP -----	1	
	S1091-25	FUSE-25 AMP -----	1	
-18	S1090-2	FUSEHOLDER-5 AMP -----	1	
	S1090-11	CAP -----	1	
	S1091-5	FUSE-5 AMP -----	1	
<p>NOTE. □THIS PART NUMBER MUST HAVE A SECOND DASH NUMBER ADDED TO DENOTE COLOR. REFER TO HOW TO ORDER INTERIOR PARTS-PAGE VII.</p> <p>NOTE. *THIS KIT ALSO INCLUDES DOORLOCK & KEYS.</p> <p>A---150 SERIAL 15074851 THRU 15077005 F150 SERIAL F15001014 THRU F15001248 A150 SERIAL A1500430 THRU A1500609 FA150 SERIAL FA1500212 THRU FA1500281</p> <p>B---150 SERIAL 15074851 THRU 15075781 F150 SERIAL F15001014 THRU F15001143 A150 SERIAL A1500340 THRU A1500523 FA150 SERIAL FA1500212 THRU FA1500261</p> <p>C---150 SERIAL 15075782 THRU 15077005 F150 SERIAL F15001144 THRU F15001248 A150 SERIAL A1500524 THRU A1500609 FA150 SERIAL FA1500262 THRU FA1500281</p>				

Instruments (Cont)



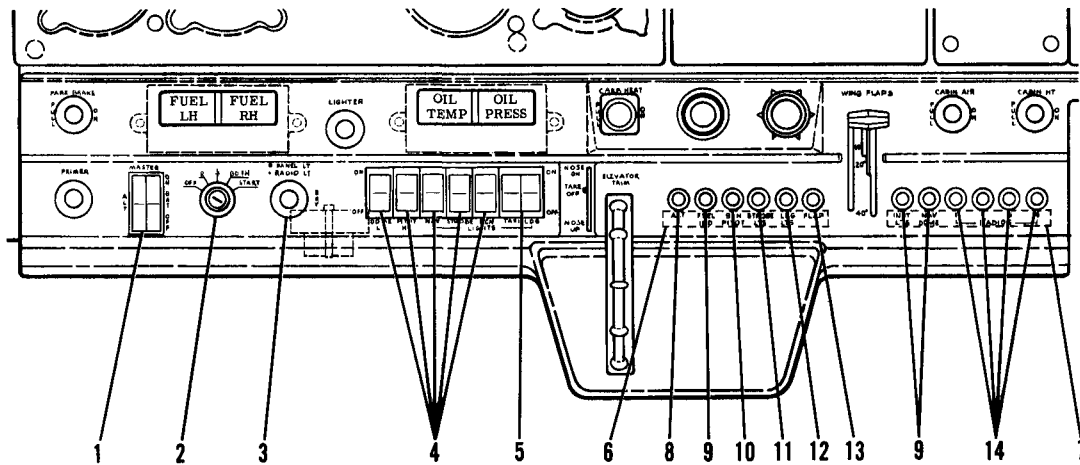
150 SERIAL 15077006 THRU 15078505
 F150 SERIAL F15001249 THRU F15001338
 A150 SERIAL A1500610 THRU A1500684
 FA150 SERIAL FA1500282 THRU FA1500311

Figure 48B. Switch & Circuit Breaker Installation



FIGURE AND INDEX NO.	PART NUMBER	DESCRIPTION	UNITS	USABLE
			PER ASSY	ON CODE
48B-		SWITCH & CIRCUIT BREAKER INSTALLATION -----	NP	A
- 1	S1994-1-1	SWITCH-MASTER -----	1	
	S1843-1	BEZEL-MASTER SWITCH -----	1	
- 2	C292501-0104 *	KIT-IGNITION SWITCH -----	1	
	0713221-1	COVER-IGNITION SWITCH -----	1	
- 3	S1995-4	KNOB ASSY-VARIABLE RESISTOR -----	1	
		ATTACHING PARTS		
	AN565B2H3	SCREW-SET -----	1	
		---*---		
	S2091-5	RESISTOR ASSY-TANDEM VARIABLE -----	1	
	S2000B270J	RESISTOR -----	2	
- 4	CA-2	CIRCUIT BREAKER SPTD -----	1	
		ATTACHING PARTS		
- 5	AN505-6R16	SCREW -----	2	
- 6	AN936B6	WASHER -----	4	
- 7	NAS43DD3-10	SPACER -----	2	
- 8	AN315-640	NUT -----	4	
		---*---		
- 9	S2160-1	SWITCH -----	5	
	S2161-1	COVER-SWITCH CUTOUT -----	AR	
-10	S2160-5	SWITCH LANDING LIGHT INSTALLATION ONLY -----	1	
	S2160-4	SWITCH LANDING & TAXI LIGHT INSTALLATION -----	1	
	S2161-2	COVER-SWITCH CUTOUT -----	AR	
-11	S1661-2	SWITCH-FLAP -----	1	
		ATTACHING PARTS		
	S1216-4	NUT -----	1	
		---*---		
	S1771-1	KNOB-FLAP SWITCH -----	1	
-12	1270704-4	BUS BAR -----	1	
-13	S1596-60L	CIRCUIT BREAKER-60 AMP -----	1	
-14	S1360-10L	CIRCUIT BREAKER-10 AMP -----	3	
-15	S1360-15L	CIRCUIT BREAKER-15 AMP -----	1	
		USED WITH BOTH FLASHING BEACON & HEATED PITOT INSTL OR HEATED PITOT INSTL ONLY		
	S1360-10L	CIRCUIT BREAKER-10 AMP -----	1	
-16	S1360-5L	CIRCUIT BREAKER-5 AMP -----	1	
-17	S1360-25L	CIRCUIT BREAKER-25 AMP -----	1	
-18	S1360-15L	CIRCUIT BREAKER-15 AMP -----	1	
	S2122-1	NUT CIRCUIT BREAKER ATTACH -----	AR	
-19		RADIO INSTL SEE CESSNA ELECTRONICS MANUAL -----	1	
<p>NOTE. *THIS KIT ALSO INCLUDES DOORLOCK & KEYS.</p> <p>A---150 SERIAL 15077006 THRU 15078505 F150 SERIAL F15001249 THRU F15001338 A150 SERIAL A1500610 THRU A1500684 FA150 SERIAL FA1500282 THRU FA1500311</p>				

Instruments (Cont)

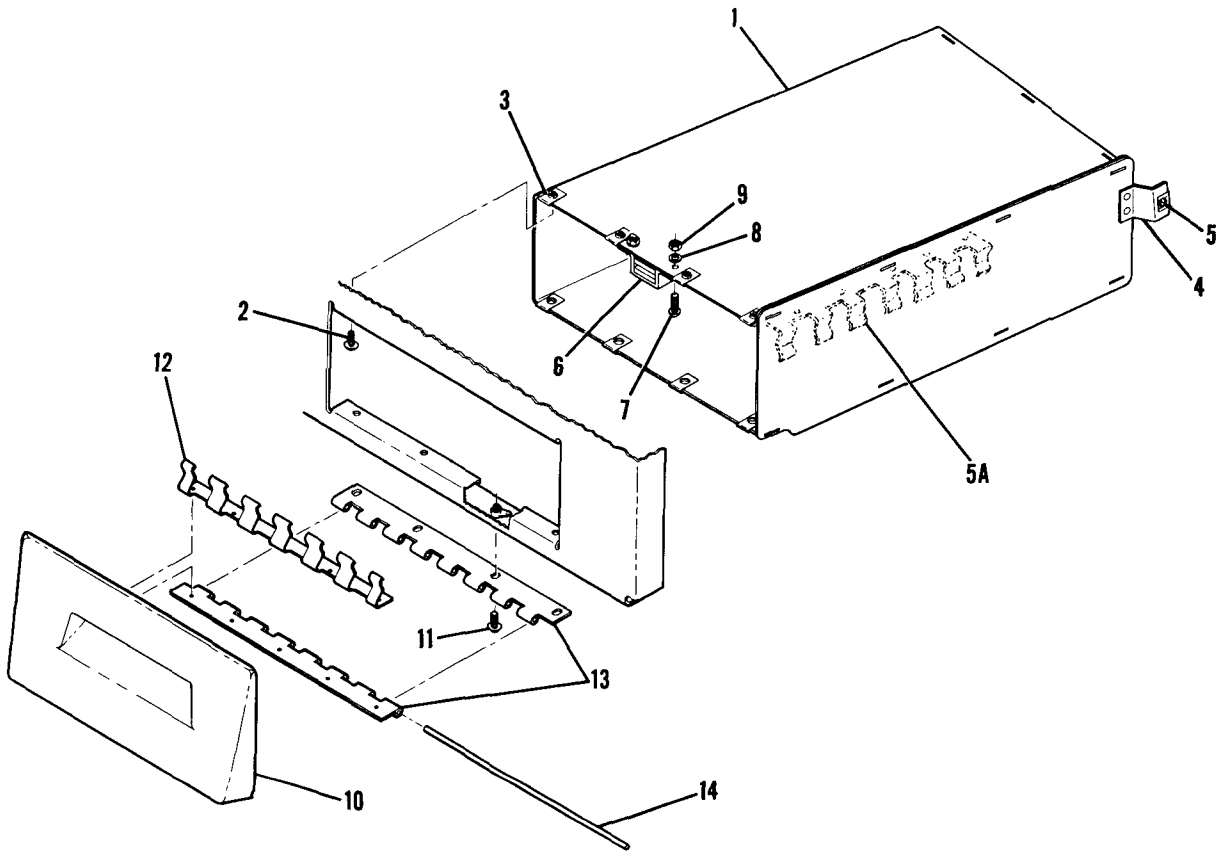


**150 SERIAL 15078506 & ON
F150 SERIAL F15001339 & ON
A150 SERIAL A1500685 & ON
FA150 SERIAL FA1500312 & ON**

Figure 48C. Switch & Circuit Breaker Installation

FIGURE AND INDEX NO.	PART NUMBER	DESCRIPTION	UNITS PER ASSY	USABLE ON CODE
		1 2 3 4 5 6 7		
48C-		SWITCH & CIRCUIT BREAKER INSTALLATION -----	NP	A
- 1	S1994-1-1	SWITCH-MASTER -----	1	
	S1843-1	BEZEL-MASTER SWITCH -----	1	
- 2	C292501-0104 *	KIT-IGNITION SWITCH -----	1	
	0713221-1	COVER-IGNITION SWITCH -----	1	
- 3	S1995-4	KNOB ASSY-VARIABLE RESISTOR -----	1	
		ATTACHING PARTS		
	AN56582H3	SCREW-SET -----	1	
		-----*		
	S2091-5	RESISTOR ASSY-TANDEM VARIABLE -----	1	
	S20008270J	RESISTOR -----	2	
- 4	S2160-1	SWITCH -----	5	
	S2161-1	COVER-SWITCH CUTOUT -----	AR	
- 5	S2160-4	SWITCH LANDING & TAXI LIGHT INSTL -----	1	
	S2160-5	SWITCH LANDING LIGHT INSTL ONLY -----	1	
	S2161-2	COVER-SWITCH CUTOUT -----	AR	
- 6	1270704-5	BUS BAR -----	1	
- 7	1270704-6	BUS BAR USED WITHOUT RADIO INSTL -----	1	
	1270704-1	BUS BAR USED WITH RADIO INSTL -----	1	
- 8	S1596-60L	CIRCUIT BREAKER-60 AMP -----	1	
- 9	S1360-10L	CIRCUIT BREAKER-10 AMP -----	3	
-10	S1360-20L	CIRCUIT BREAKER-20 AMP USED WITH BOTH FLASHING BEACON & HEATED PITOT OR HEATED PITOT ONLY -----	1	
	S1360-15L	CIRCUIT BREAKER-15 AMP USED WITH FLASHING BEACON ONLY -----	1	
-11	S1360-5L	CIRCUIT BREAKER-5 AMP -----	1	
-12	S1360-25L	CIRCUIT BREAKER-25 AMP -----	1	
-13	S1360-15L	CIRCUIT BREAKER-15 AMP -----	1	
	S2122-1	NUT CIRCUIT BREAKER ATTACH -----	1	
-14		RADIO INSTL SEE CESSNA ELECTRONICS MANUAL -----	AR	
<p>NOTE. *THIS KIT ALSO INCLUDES DOORLOCK & KEYS.</p> <p>A---150 SERIAL 15078506 & ON F150 SERIAL F15001339 & ON A150 SERIAL A1500685 & ON FA150 SERIAL FA1500312 & ON</p>				

Map Compartment

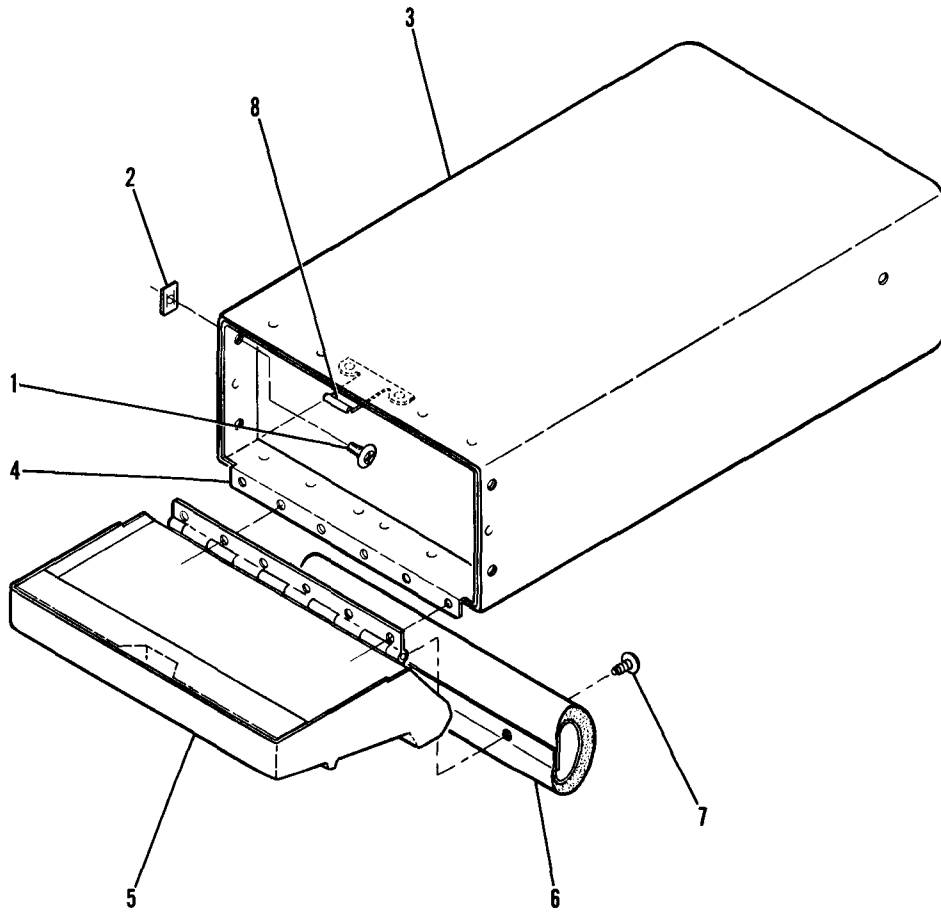


150 SERIAL 15071129 THRU 15077005
F150 SERIAL F15000530 THRU F15001248
A150 SERIAL A1500001 THRU A1500609
FA150 SERIAL FA1500001 THRU FA1500281

Figure 49. Glove Box Installation

FIGURE AND INDEX NO.	PART NUMBER	DESCRIPTION	UNITS PER ASSY	USABLE ON CODE
		1 2 3 4 5 6 7		
49 -		GLOVE BOX INSTALLATION -----	NP	
- 1	0413481-1	BOX ASSEMBLY-GLOVE -----	1	C
	0413481-6	BOX ASSEMBLY-GLOVE -----	1	B
- 2	S102126-6	ATTACHING PARTS -----	8	
		SCREW -----		
		-----*		
- 3	NAS395-6-3	NUTPLATE -----	8	
- 4	0413482-1	BRACKET ASSEMBLY -----	1	
- 5	NAS395-3-3	NUTPLATE -----	1	
- 5A	0413521-1	FUSEHOLDER -----	1	B
- 6	S1895-1	MAGNETIC CATCH -----	1	
		ATTACHING PARTS -----		
- 7	AN515-6R8	SCREW -----	2	
- 8	AN93686	WASHER -----	2	
- 9	AN340-6	NUT -----	2	
		-----*		
-10	0413458-1	□ DOOR ASSEMBLY-GLOVE BOX -----	1	A
	0413525-1	□ DOOR ASSEMBLY-GLOVE BOX -----	1	B
	0413525-10	□ DOOR ASSEMBLY-GLOVE BOX -----	1	D
		ATTACHING PARTS -----		
-11	AN515-6R6	SCREW -----	4	
		-----*		
-12	0413458-4	FUSEHOLDER -----	1	A
	0413526-1	FUSEHOLDER -----	1	D
-13	0413458-5	HINGE ASSEMBLY -----	1	A
	0413525-1	HINGE ASSEMBLY -----	1	E
-14	0413375-9	PIN-HINGE -----	1	
<p>NOTE. □ THIS PART NUMBER MUST HAVE A SECOND DASH NUMBER ADDED TO DENOTE COLOR. REFER TO HOW TO ORDER INTERIOR PARTS-PAGE VII.</p> <p>A---150 SERIAL 15071129 THRU 15072628 F150 SERIAL F15000530 THRU F15000738 A150 SERIAL A1500001 THRU A1500276 FA150 SERIAL FA1500001 THRU FA1500161</p> <p>B---150 SERIAL 15072629 THRU 15072814 F150 SERIAL F15000739 THRU F15000818 A150 SERIAL A1500277 THRU A1500290</p> <p>C---150 SERIAL 15071129 THRU 15072628, 15072815 THRU 15077005 F150 SERIAL F15000530 THRU F15000738, F15000819 THRU 15001248 A150 SERIAL A1500001 THRU A1500276, A1500291 THRU A1500610 FA150 SERIAL FA1500001 THRU FA1500281</p> <p>D---150 SERIAL 15072815 THRU 15077005 F150 SERIAL F15000819 THRU F15001248 A150 SERIAL A1500291 THRU A1500609 FA150 SERIAL 1500162 THRU FA1500281</p> <p>E---150 SERIAL 15072629 THRU 15077005 F150 SERIAL F15000739 THRU F15001248 A150 SERIAL A1500277 THRU A1500609 FA150 SERIAL FA1500162 THRU FA1500281</p>				

Map Compartment (Cont)

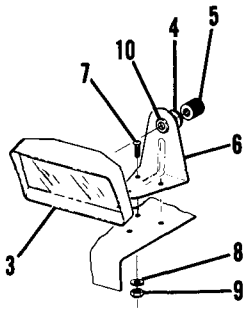


150 SERIAL 15077006 & ON
F150 SERIAL F15001249 & ON
A150 SERIAL A1500610 & ON
FA150 SERIAL FA1500282 & ON

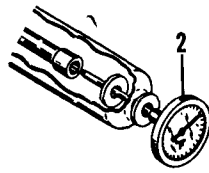
Figure 49A. Map Case Installation

FIGURE AND INDEX NO.	PART NUMBER	DESCRIPTION	UNITS PER ASSY	USABLE ON CODE
		1 2 3 4 5 6 7		
49A-		MAP CASE INSTALLATION -----	NP	A
	0413546-1 □	MAP CASE ASSY-REMOVABLE -----	1	B
	0413546-13 □	MAP CASE ASSY-REMOVABLE -----	1	C
		ATTACHING PARTS		
- 1	S1021Z6-6	SCREW -----	4	
- 2	NAS446-2-3	NUT -----	4	
		-----*		
- 3	0513085-3	CASE-MAP CASE -----	1	
- 4	0413546-9	STIFFENER-MAP CASE -----	1	
- 5	0413546-2 □	DOOR ASSY-MAP CASE -----	1	B
	0413546-14 □	DOOR ASSY-MAP CASE -----	1	C
- 6	0513292-3 □	PROTECTOR ASSY -----	1	C
		ATTACHING PARTS		
- 7	S1021Z6-6	SCREW -----	2	C
		-----*		
- 8	0413546-10	LATCH-MAP CASE -----	1	
<p>NOTE. □THIS PART NUMBER MUST HAVE A SECOND DASH NUMBER ADDED TO DENOTE COLOR. REFER TO HOW TO ORDER INTERIOR PARTS-PAGE VII.</p> <p>A---150 SERIAL 15077006 & ON F150 SERIAL F15001249 & ON A150 SERIAL A1500610 & ON FA150 SERIAL FA1500282 & ON</p> <p>B---150 SERIAL 15077006 THRU 15078505 F150 SERIAL F15001249 THRU F15001338 A150 SERIAL A1500610 THRU A1500684 FA150 SERIAL FA1500282 THRU FA1500311</p> <p>C---150 SERIAL 15078506 & ON F150 SERIAL F15001339 & ON A150 SERIAL A1500685 & ON FA150 SERIAL FA1500312 & ON</p>				

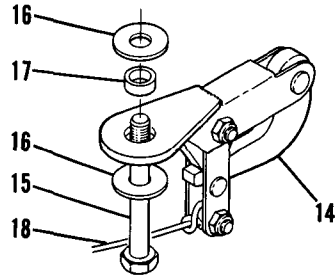
Fuselage Equipment



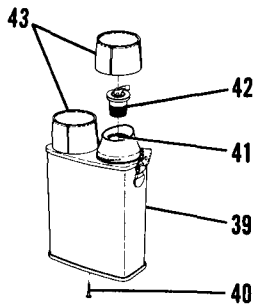
CODE D
MIRROR INSTALLATION



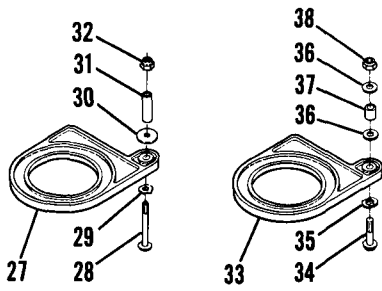
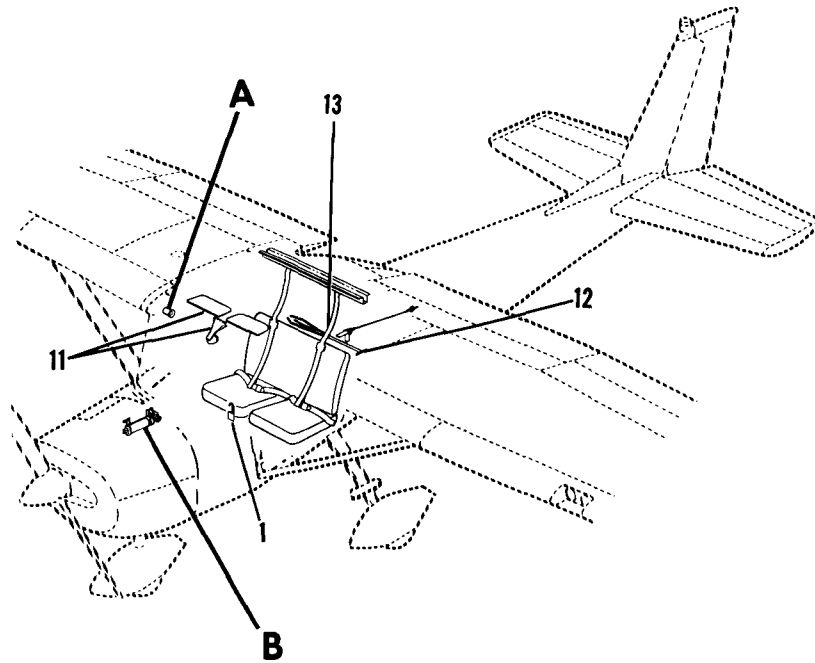
Detail **A**



TOW HOOK INSTALLATION



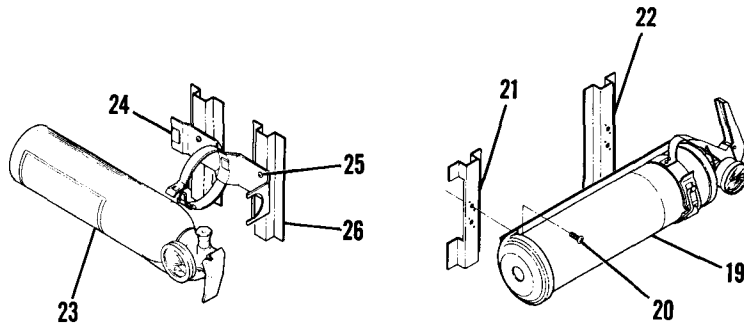
TWIN PACK
ASSEMBLY



CODE N

CODE P

CUP HOLDER



CODE J

CODE H

Detail **B**

Figure 50. Fuselage Equipment Installation