

Electrical Equipment

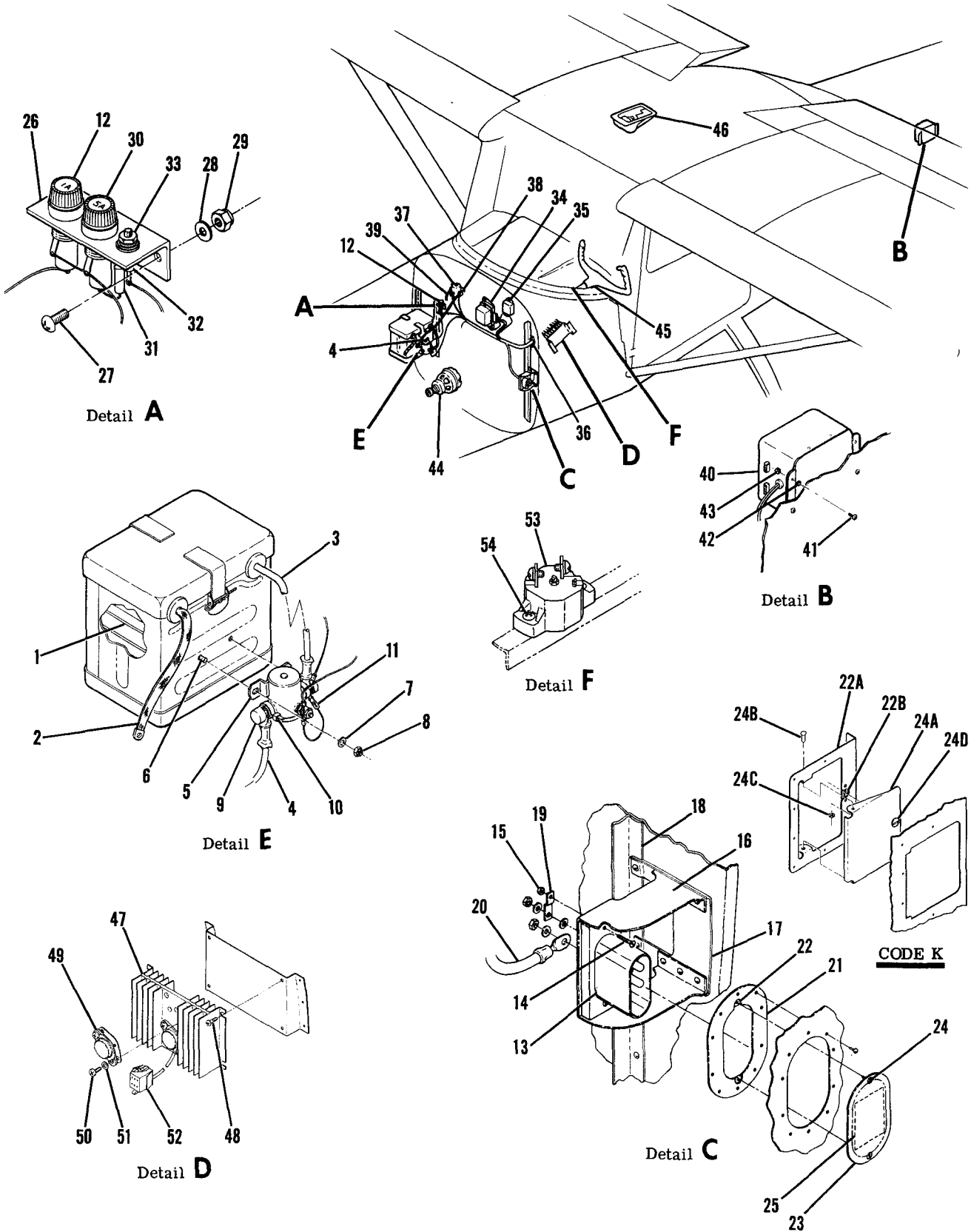


Figure 80. Electrical Equipment Installation

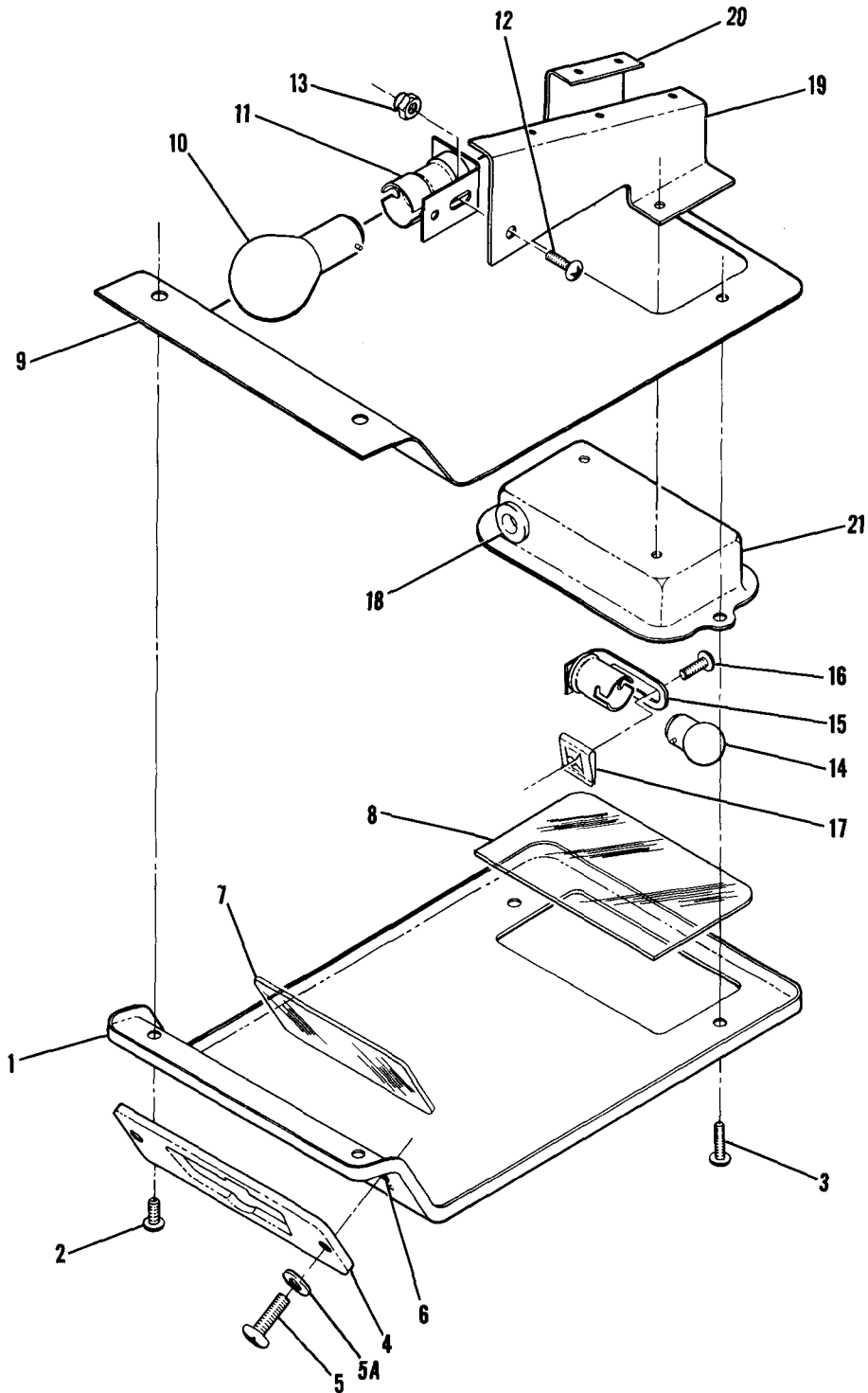
FIGURE AND INDEX NO.	PART NUMBER	DESCRIPTION	UNITS PER ASSY	USABLE ON CODE
		<b>1 2 3 4 5 6 7</b>		
80 -20	0410011-PC1	CABLE-GROUND SERVICE PLUG TO BATTERY CONTACTOR -----	1	J
	0470401-PC1	CABLE-GROUND SERVICE PLUG TO BATTERY CONTACTOR -----	1	K
-21	0752610-1	DOUBLER ASSEMBLY -----	1	J
-22	S1115-19	RECEPTACLE-STUD -----	2	J
-22A	0552161-2	DOUBLER ASSY -----	1	K
-22B	S1115-19	RECEPTACLE -----	1	K
-23	0752611-1	DOOR ASSY-GROUND SERVICE PLUG -----	1	J
-24	S1115-30	STUD -----	2	J
	S1115-9	RING -----	2	J
-24A	0552161-4	DOOR ASSY-GROUND SERVICE PLUG -----	1	K
		ATTACHING PARTS		
-24B	MS20450C8-5	RIVET-TUBLAR -----	2	K
-24C	AN960XCL4	WASHER -----	2	K
		-----*		
-24D	S1115-1	STUD -----	1	K
	S1115-9	RING -----	1	K
-25		PLACARD SEE PLACARD FIGURES -----	1	
-26	0712031-1	MOUNTING BRACKET-FUSE & DIODE-EXT POWER & CLOCK -----	1	
		ATTACHING PARTS		
-27	AN515-10R8	SCREW -----	2	
-28	AN960-10L	WASHER -----	2	
-29	MS21045L3	NUT -----	2	
		-----*		
-30	S1090-2	FUSE HOLDER-EXTERNAL POWER -----	1	
	S1090-11	CAP -----	1	
	S1091-5	FUSE-EXTERNAL POWER 5 AMP -----	1	
-31	X26263	RESISTOR-GROUND SERVICE PLUG .75 OHMS TRTA -----	1	
-32	20H3P	DIODE-EXTERNAL POWER SATA -----	1	
	6F20-D	DIODE-EXTERNAL POWER ALTERNATE AFE -----	1	
	43-1761	INSULATING HARDWARE SPD ORDER WITH 6F20-D -----	1	
	IN1344A	DIODE-EXTERNAL POWER SPD -----	1	
		ATTACHING PARTS		
-33	LN-1032-X	NUT WECK -----	1	
	S1038-2	WASHER -----	1	
		-----*		
-34	C611001-0101	VOLTAGE REGULATOR 60 AMP WEU C611001-0102 -----	1	G
	C611001-0102	VOLTAGE REGULATOR 60 AMP -----	1	H
	C611001-0201	VOLTAGE REGULATOR 60 AMP -----	1	K
		ATTACHING PARTS		
	AN520-416R8	SCREW -----	2	
		-----*		
	C6AB10A730A	HOUSING-REGULATOR PLUG -----	1	
-35	0770038-2	NOISE FILTER -----	1	
		ATTACHING PARTS		
	AN520-8R8	SCREW -----	2	
		-----*		
-36	S1095-5	SHIELD HALF -----	2	
		ATTACHING PARTS		
	S1021Z8-6	SCREW -----	2	
	NAS446-4-3	NUT -----	2	
		-----*		
	NAS557-10A	GROMMET -----	1	
-37	S1991-1	CONTACTOR-STARTER -----	1	
		ATTACHING PARTS		
	AN3-3A	BOLT -----	2	
		-----*		
-38	S1807-1	COVER -----	2	
	S2209-1	STA-STRAP -----	2	
-39	0410011-KA3	CABLE-STARTER CONTACTOR TO STARTER -----	1	J
	0470401-KA3	CABLE-STARTER CONTACTOR TO STARTER -----	1	K
-40	C622004-0103	POWER SUPPLY-STROBE LIGHT -----	1	C
	SEE FIG 3	POWER SUPPLY-STROBE LIGHT -----	1	D
		ATTACHING PARTS		
-41	AN520-10R8	SCREW -----	4	C
-42	AN960-10L	WASHER -----	4	C
-43	MS21044N3	NUT -----	4	C
		-----*		
-44	SEE FIG 82	ALTERNATOR INSTALLATION -----	1	
-45	SEE FIG 85	CONTROL WHEEL MAP LIGHT INSTALLATION -----	1	A
	SEE FIG 85A	CONTROL WHEEL MAP LIGHT & MIKE SWITCH INSTALLATION -----	1	B

CONTINUED ON NEXT PAGE

FIGURE AND INDEX NO.	PART NUMBER	DESCRIPTION	UNITS PER ASSY	USABLE ON CODE
80 -46	SEE FIG 81 SEE FIG 81A&81B SEE FIG 83 SEE FIG 83A&83B SEE FIG 84 SEE FIG 48 & 48A	INSTRUMENT PANEL LIGHTS INSTALLATION ----- INSTRUMENT PANEL LIGHTS INSTALLATION ----- LANDING LIGHT INSTALLATION-WING ----- LANDING LIGHT INSTALLATION-COWL ----- FLASHING BEACON LIGHT INSTALLATION ----- INSTRUMENT PANEL ELECTRICAL COMPONENTS -----	1 1 1 1 1 1	A B A B
-47	1570166-1	DIMMING ASSY-TRANSISTORIZED LIGHT ----- ATTACHING PARTS	1	K
-48	AN520-10R6 AN960-10L	SCREW ----- WASHER -----	4 4	K K
-49	2N3055	TRANSISTOR RCA ----- ATTACHING PARTS	2	K
-50	S1021Z6-8	SCREW -----	2	K
-51	AN960-6L	WASHER -----	2	K
-52	S1641-6	HOUSING-SOCKET -----	1	K
-53	CA-2	CIRCUIT BREAKER ----- ATTACHING PARTS	1	L
-54	AN515-6R8 MS21044N06	SCREW ----- NUT -----	2 2	L L
NOTE. *THIS KIT INCLUDES DRY BATTERY & ELECTROLYTE				
<p>A---150 SERIAL 15071129 THRU 15072003 F150 SERIAL F15000530 THRU F15000658 A150 SERIAL A1500001 THRU A1500226 FA150 SERIAL FA1500001 THRU FA1500081</p> <p>B---150 SERIAL 15072004 &amp; ON F150 SERIAL F15000659 &amp; ON A150 SERIAL A1500227 &amp; ON FA150 SERIAL FA1500082 &amp; ON</p> <p>C---150 SERIAL 15072004 THRU 15073658 F150 SERIAL F15000659 THRU F15000863 A150 SERIAL A1500227 THRU A1500342 FA150 SERIAL FA1500082 THRU FA1500166</p> <p>D---150 SERIAL 15073659 &amp; ON F150 SERIAL F15000864 &amp; ON A150 SERIAL A1500343 &amp; ON FA150 SERIAL FA1500167 &amp; ON</p> <p>E---150 SERIAL 15071129 THRU 15073740 F150 SERIAL F15000530 THRU F15000903 A150 SERIAL A1500001 THRU A1500344 FA150 SERIAL FA1500001 THRU FA1500191</p> <p>F---150 SERIAL 15073741 &amp; ON F150 SERIAL F15000904 &amp; ON A150 SERIAL A1500345 &amp; ON FA150 SERIAL FA1500192 &amp; ON</p> <p>G---150 SERIAL 15071129 THRU 15075632 F150 SERIAL F15000530 THRU F15001133 A150 SERIAL A1500001 THRU A1500480 FA150 SERIAL FA1500001 THRU FA1500261</p> <p>H---150 SERIAL 15075633 THRU 15077005 F150 SERIAL F15001134 THRU F15001248 A150 SERIAL A1500481 THRU A1500609 FA150 SERIAL FA1500262 THRU FA1500281</p> <p>J---150 SERIAL 15071129 THRU 15077009 F150 SERIAL F15000530 THRU F15001248 A150 SERIAL A1500001 THRU A1500609 FA150 SERIAL FA1500001 THRU FA1500281</p> <p>K---150 SERIAL 15077006 &amp; ON F150 SERIAL F15001249 &amp; ON A150 SERIAL A1500610 &amp; ON FA150 SERIAL FA1500282 &amp; ON</p> <p>L---150 SERIAL 15078506 &amp; ON F150 SERIAL F15001339 &amp; ON A150 SERIAL A1500685 &amp; ON FA150 SERIAL FA1500312 &amp; ON</p>				



Electrical Equipment (Cont)

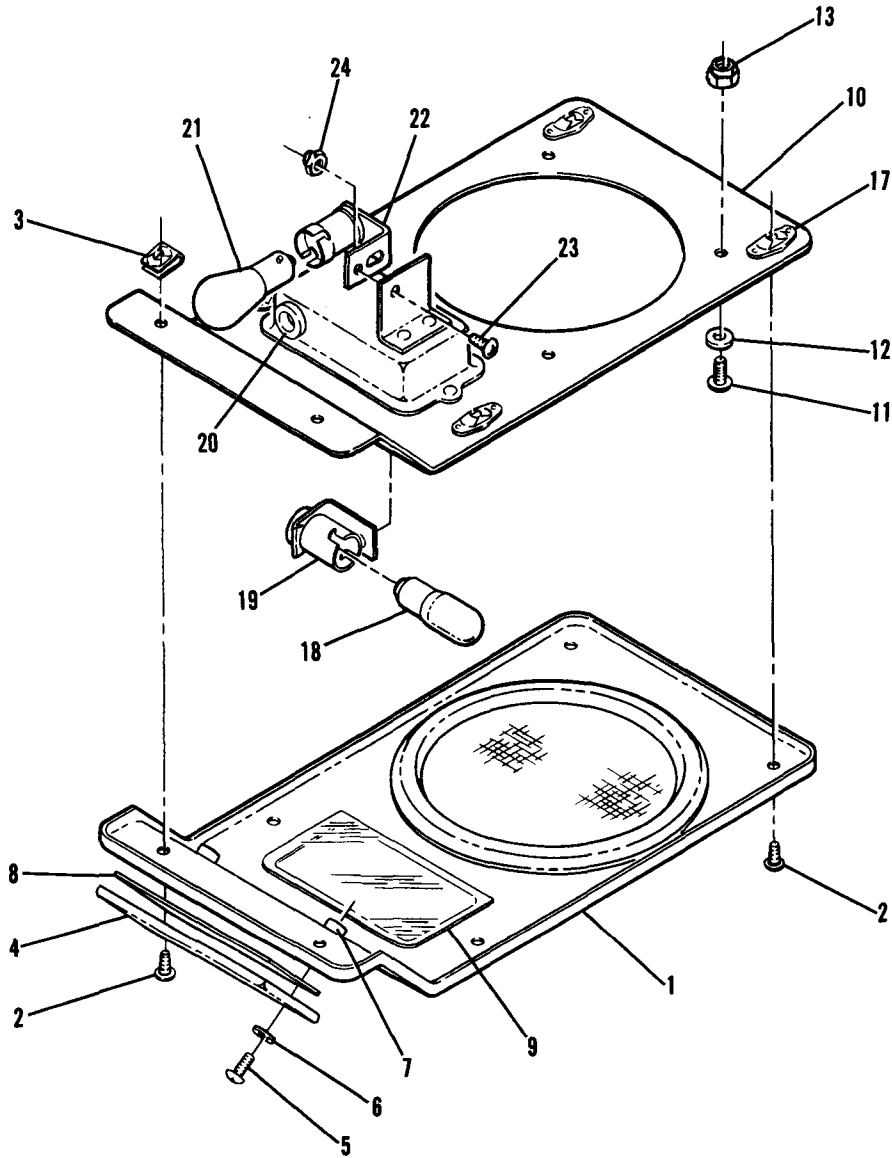


150 SERIAL 15071129 THRU 15072003  
F150 SERIAL F15000530 THRU F15000658  
A150 SERIAL A1500001 THRU A1500226  
FA150 SERIAL FA1500001 THRU FA1500081

Figure 81. Instrument Panel Lights Installation

FIGURE AND INDEX NO.	PART NUMBER	DESCRIPTION	UNITS PER ASSY	USABLE ON CODE
		<b>1 2 3 4 5 6 7</b>		
81		INSTRUMENT PANEL LIGHT INSTALLATION -----	NP	A
- 1	0414013-1	COVER ASSEMBLY-OVERHEAD CONSOLE -----	1	
		ATTACHING PARTS -----		
- 2	S102126-6	SCREW -----	2	
- 3	S102124-8	SCREW -----	2	
		-----*		
- 4	0414013-3	SHIELD -----	1	
		ATTACHING PARTS -----		
- 5	AN515-6R10	SCREW -----	2	
- 5A	AN960D8L	WASHER -----	2	
		-----*		
- 6	NAS680A06K	NUTPLATE -----	2	
- 7	0414013-4	LENS-INSTRUMENT LIGHT -----	1	
- 8	0413141-1	LENS-INSTRUMENT LIGHT -----	1	
- 9	0413503-1	SUPPORT-OVERHEAD CONSOLE -----	1	
-10	MS15584-2	BULB-INSTRUMENT LIGHT -----	1	
-11	0513208-1	SOCKET-INSTRUMENT LIGHT -----	1	
		ATTACHING PARTS -----		
-12	AN515-6-6	SCREW -----	1	
-13	MS21044N06	NUT -----	1	
		-----*		
-14	S1876-1	BULB-INSTRUMENT LIGHT -----	1	
-15	0413138	SOCKET-INSTRUMENT LIGHT -----	1	
		ATTACHING PARTS -----		
-16	S102124-6	SCREW -----	1	
-17	NAS395-1-3	NUT -----	1	
		-----*		
-18	MS35489-4	GROMMET -----	1	
	0413495-1	BRACKET ASSEMBLY -----	1	
-19	0413495-2	BRACKET-LH -----	1	
-20	0413495-3	BRACKET-RH -----	1	
-21	0413140-5	REFLECTOR -----	1	
		 A---150 SERIAL 15071129 THRU 15072003 F150 SERIAL F15000530 THRU F15000658 A150 SERIAL A1500001 THRU A1500226 FA150 SERIAL FA1500001 THRU FA1500081		

Electrical Equipment (Cont)

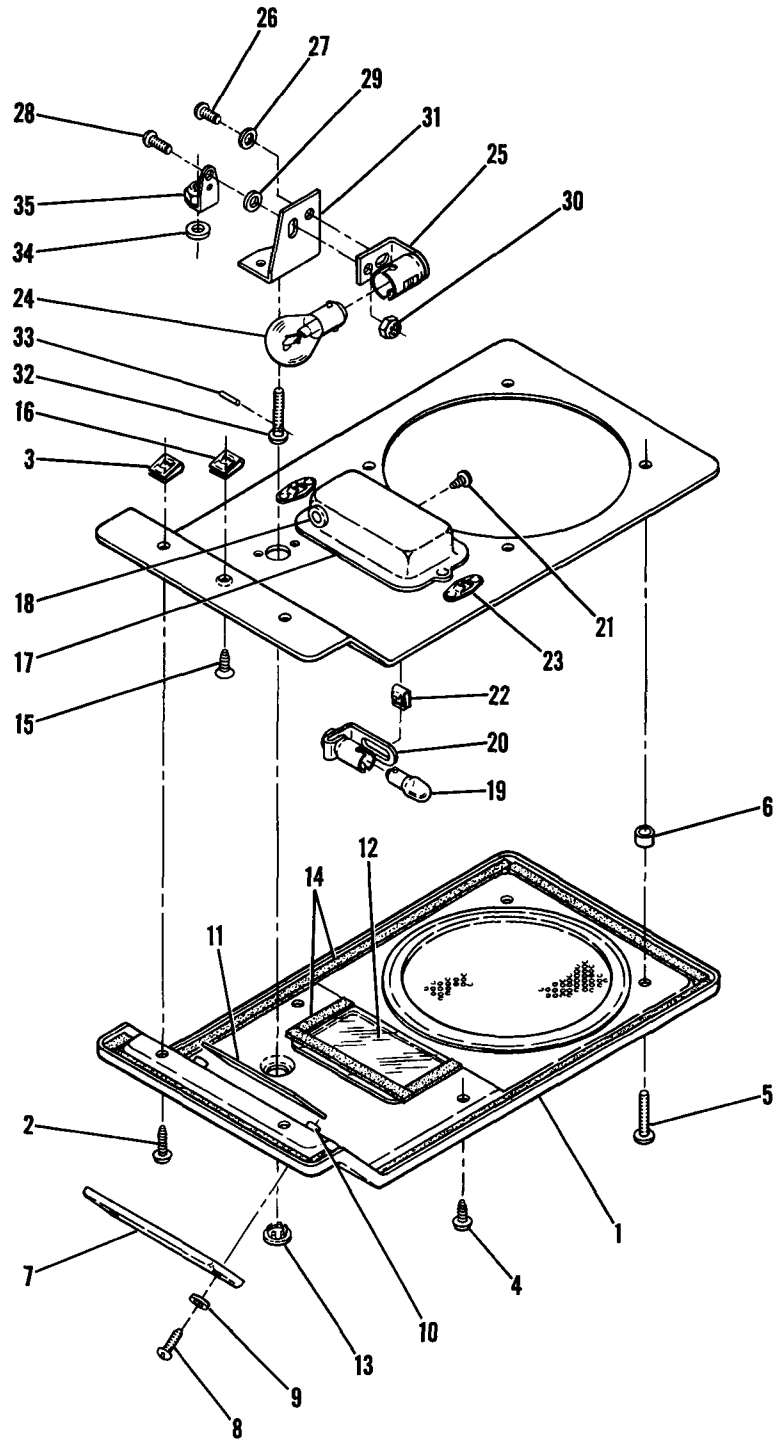


150 SERIAL 15072004 THRU 15078505  
F150 SERIAL F15000659 THRU F15001338  
A150 SERIAL A1500227 THRU A1500684  
FA150 SERIAL FA1500082 THRU FA1500311

Figure 81A. Instrument Panel Lights Installation

FIGURE AND INDEX NO.	PART NUMBER	DESCRIPTION	UNITS PER ASSY	USABLE ON CODE
		<b>1 2 3 4 5 6 7</b>		
81A-		INSTRUMENT PANEL LIGHT INSTALLATION -----	NP	A
- 1	0470114-1	COVER ASSEMBLY-OVERHEAD CONSOLE -----	1	
		ATTACHING PARTS -----		
- 2	S1021Z6-10	SCREW -----	6	
- 3	NAS395-3-3	NUT -----	2	
		---*---		
- 4	0414013-3	SHIELD -----	1	
		ATTACHING PARTS -----		
- 5	AN515-6R10	SCREW -----	2	
- 6	S1554-3	WASHER -----	2	
		---*---		
- 7	NAS680A06K	NUTPLATE -----	2	
- 8	0414013-4	LENS-INSTRUMENT LIGHT -----	1	
- 9	0413141-1	LENS-INSTRUMENT LIGHT -----	1	
-10	0470112-1	SUPPORT ASSEMBLY-OVERHEAD CONSOLE -----	1	
		ATTACHING PARTS -----		
-11	AN515-8R8	SCREW -----	4	
-12	AN960-8L	WASHER -----	4	
-13	MS2104408	NUT -----	4	
		---*---		
-14		DELETED, NEVER USED -----		
-15		DELETED, NEVER USED -----		
-16		DELETED, NEVER USED -----		
-17	S1863-2A	NUTPLATE -----	4	
-18	S1876-1	BULB-INSTRUMENT LIGHT -----	1	
-19	0413138	SOCKET-INSTRUMENT LIGHT -----	1	
		ATTACHING PARTS -----		
	S1021Z6-4	SCREW -----	2	
	NAS395-1-3	NUT -----	2	
		---*---		
-20	MS35489-4	GROMMET -----	1	
-21	MS15584-2	BULB-INSTRUMENT LIGHT -----	1	
-22	0513208-1	SOCKET-INSTRUMENT LIGHT -----	1	
		ATTACHING PARTS -----		
-23	AN515-6-6	SCREW -----	1	
-24	MS21044N06	NUT -----	1	
		---*---		
		A---150 SERIAL 15072004 THRU 15078505		
		F150 SERIAL F15000659 THRU F15001338		
		A150 SERIAL A1500227 THRU A1500684		
		FA150 SERIAL FA1500082 THRU FA1500311		

Electrical Equipment (Cont)



150 SERIAL 15078506 & ON  
 F150 SERIAL F15001339 & ON  
 A150 SERIAL A1500685 & ON  
 FA150 SERIAL FA1500312 & ON

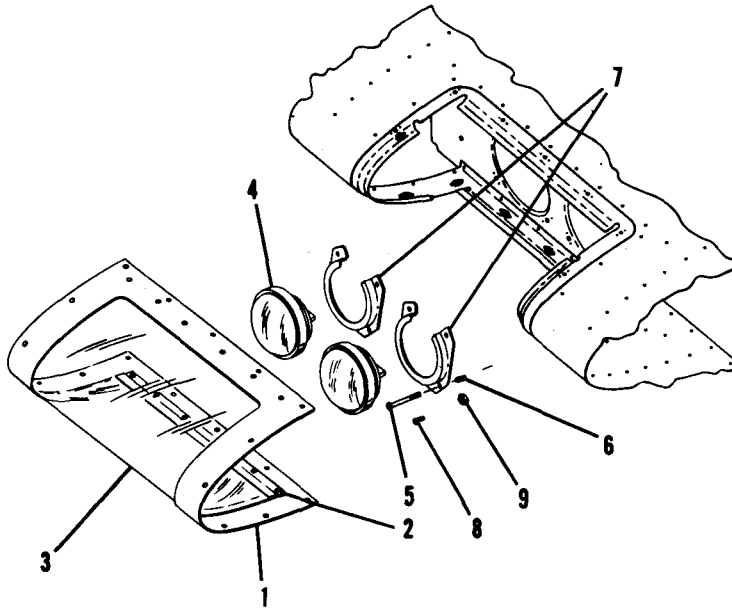
Figure 81B. Instrument Panel Light Installation

FIGURE AND INDEX NO.	PART NUMBER	DESCRIPTION	UNITS PER ASSY	USABLE ON CODE
81B-		1 2 3 4 5 6 7		
- 1	0414068-1	INSTRUMENT PANEL LIGHT INSTALLATION ----- COVER ASSY-OVERHEAD CONSOLE ----- ATTACHING PARTS -----	1 1	A
- 2	S1021Z6-10	SCREW -----	2	
- 3	NAS395-3-3	NUT -----	2	
- 4	S1021Z6-8	SCREW -----	2	
- 5	AN520-10R12	SCREW -----	2	
- 6	NAS43HT3-16	SPACER -----	2	
- 7	0414069-1	SHIELD-OVERHEAD CONSOLE ----- ATTACHING PARTS -----	1	
- 8	AN515-6R8	SCREW -----	2	
- 9	S1554-3	WASHER -----	2	
-10	NAS697A06L	NUTPLATE -----	2	
-11	0414013-4	LENS-INSTRUMENT LIGHT -----	1	
-12	0413141-1	LENS-OVERHEAD LIGHT -----	1	
-13	CM2692-12R3S	PLUG BUTTON -----	1	
-14	S2108-2	SEAL BKI -----	AR	
	0414067-1	SUPPORT ASSY-OVERHEAD CONSOLE ----- ATTACHING PARTS -----	1	
-15	S1022Z6-8	SCREW -----	1	
-16	NAS395-3-3	NUT -----	1	
-17	0470118-2	REFLECTOR-OVERHEAD CONSOLE LIGHT -----	1	
-18	MS35489-4	GROMMET -----	1	
-19	S1876-1	BULB-OVERHEAD LIGHT -----	1	
-20	0413138	SOCKET-OVERHEAD LIGHT ----- ATTACHING PARTS -----	1	
-21	S1021Z6-4	SCREW -----	2	
-22	NAS395-2-3	NUT -----	2	
-23	S1863-2A	NUTPLATE -----	2	
-24	MS15584-2	BULB-INSTRUMENT LIGHT -----	1	
-25	0513208-1	SOCKET-INSTRUMENT LIGHT ----- ATTACHING PARTS -----	1	
-26	AN520-8R6	SCREW -----	1	
-27	NAS620-8	WASHER -----	1	
-28	AN520-8R7	SCREW -----	1	
-29	NAS620-10	WASHER -----	1	
-30	MS21044N08	NUT -----	2	
-31	0511324-2	BRACKET-ADJUSTABLE INSTRUMENT LIGHT -----	1	
-32	0511324-4	SCREW-ADJUSTABLE INSTRUMENT LIGHT -----	1	
-33	MS16562-193	ROLL PIN -----	1	
-34	AN960-10	WASHER -----	1	
-35	0511324-3	NUT-ADJUSTABLE INSTRUMENT LIGHT -----	1	
		A---150 SERIAL 15078506 & ON F150 SERIAL F15001339 & ON A150 SERIAL A1500685 & ON FA150 SERIAL FA1500312 & ON		



FIGURE AND INDEX NO.	PART NUMBER	DESCRIPTION	UNITS PER ASSY	USABLE ON CODE
		<b>1 2 3 4 5 6 7</b>		
82 -		ALTERNATOR INSTALLATION-60 AMP -----	NP	
- 1	C611501-0202	ALTERNATOR ASSEMBLY WEU C611501-0204 -----	1	A
	C611501-0204	ALTERNATOR ASSEMBLY -----	1	B
		ATTACHING PARTS -----		
- 2	MS21042L5	NUT -----	3	
- 3	AN960-516	WASHER -----	3	
		-----*		
- 4	MS21042L4	NUT ON BATTERY TERMINAL -----	1	A
	AN340-416	NUT ON BATTERY TERMINAL -----	1	B
- 5	MS21045L3	NUT ON FIELD TERMINAL -----	1	A
	AN340-10	NUT ON FIELD TERMINAL -----	1	B
	AN936A10	WASHER ON FIELD TERMINAL -----	1	
- 6	MS21045L3	NUT ON GROUND TERMINAL -----	1	A
	AN340-10	NUT ON GROUND TERMINAL -----	1	B
- 7	S1053E16T	HOSE-18 IN LG BULK ITEM REF S1053E16T18 -----	1	
- 8	NAS397-34	CLAMP -----	1	
- 9	0450032-1	SUPPORT-BLAST TUBE -----	1	
-10	0450037-1	STRAP-BLAST TUBE SUPPORT -----	1	
-11	AN735-32	CLAMP -----	1	
-12	AN520-10R12	SCREW -----	1	
-13	AN936A10	WASHER -----	3	
-14	MS21045L3	NUT -----	1	
-15	0450036-1	CLAMP-HALF -----	2	
-16	AN3-3	BOLT -----	1	
-17	AN936A10	WASHER -----	2	
-18	MS20364-1032C	NUT -----	1	
-19	EQ5820	DRIVE ASSEMBLY-ALTERNATOR -----	1	
-20	S2114-1	NIPPLE -----	1	C
-21	S2093-2	COVER -----	1	C
-22	S2114-2	NIPPLE -----	1	C
		A---150 SERIAL 15071129 THRU 15072143 F150 SERIAL F15000530 THRU F15000658 A150 SERIAL A1500001 THRU A1500241 FA150 SERIAL FA1500001 THRU FA1500081		
		B---150 SERIAL 15072144 & ON F150 SERIAL F150000659 & ON A150 SERIAL A1500242 & ON FA150 SERIAL FA1500082 & ON		
		C---150 SERIAL 15072629 & ON F150 SERIAL F15000739 & ON A150 SERIAL A1500277 & ON FA150 SERIAL FA1500122 & ON		

Electrical Equipment (Cont)



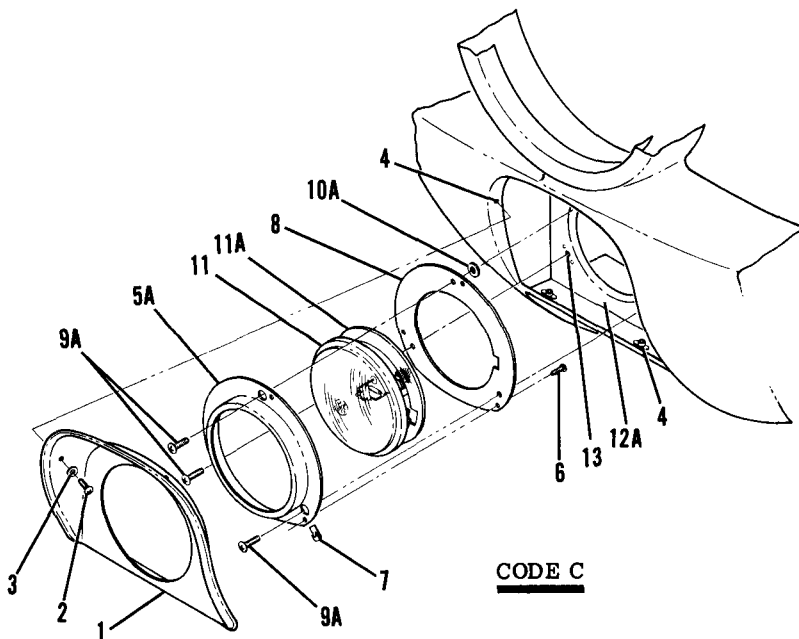
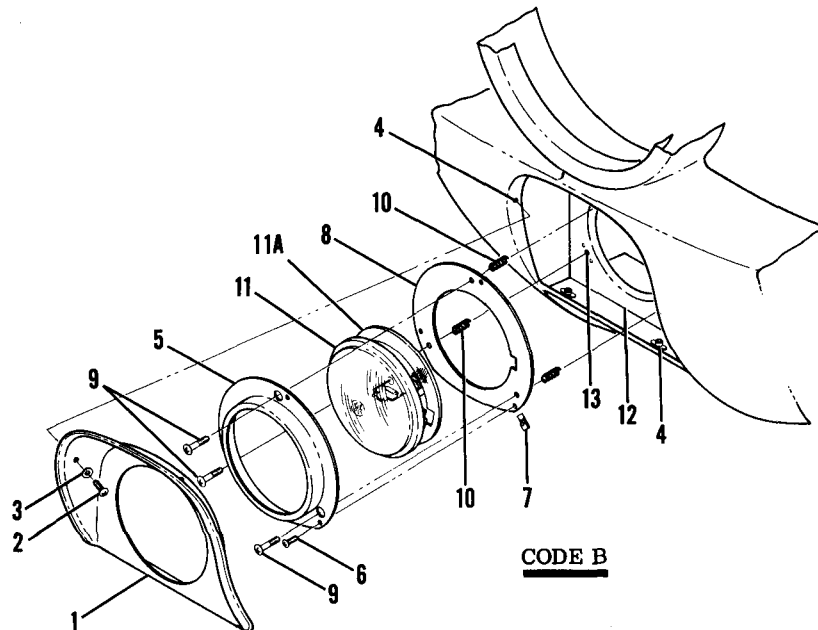
150 SERIAL 15071129 THRU 15072003  
 F150 SERIAL F15000530 THRU F15000658  
 A150 SERIAL A1500001 THRU A1500226  
 FA150 SERIAL FA1500001 THRU FA1500081

Figure 83. Landing Light Installation

FIGURE AND INDEX NO.	PART NUMBER	DESCRIPTION	UNITS PER ASSY	USABLE ON CODE
83 -		1 2 3 4 5 6 7 LANDING LIGHT INSTALLATION-WING ----- WINDOW ASSEMBLY-LANDING LIGHT -----	NP	A
- 1	0523115	RETAINER -----	1	
- 2	0523115-3	WINDOW-PLEXIGLASS -----	2	
- 3	0523115-5	LIGHT-LANDING -----	1	
- 4	0523118-1	ATTACHING PARTS -----	2	
- 5	AN515-8R26	SCREW -----	3	
- 6	0713124-1	SPRING -----	3	
- 7	0423542-6	BRACKET ASSEMBLY -----	1	
- 8	AN515-8R7	SCREW -----	1	
- 9	MS21044N08	NUT -----	1	
		A---150 SERIAL 15071129 THRU 15072003 F150 SERIAL F15000530 THRU F15000658 A150 SERIAL A1500001 THRU A1500226 FA150 SERIAL FA1500001 THRU FA1500081		



Electrical Equipment (Cont)

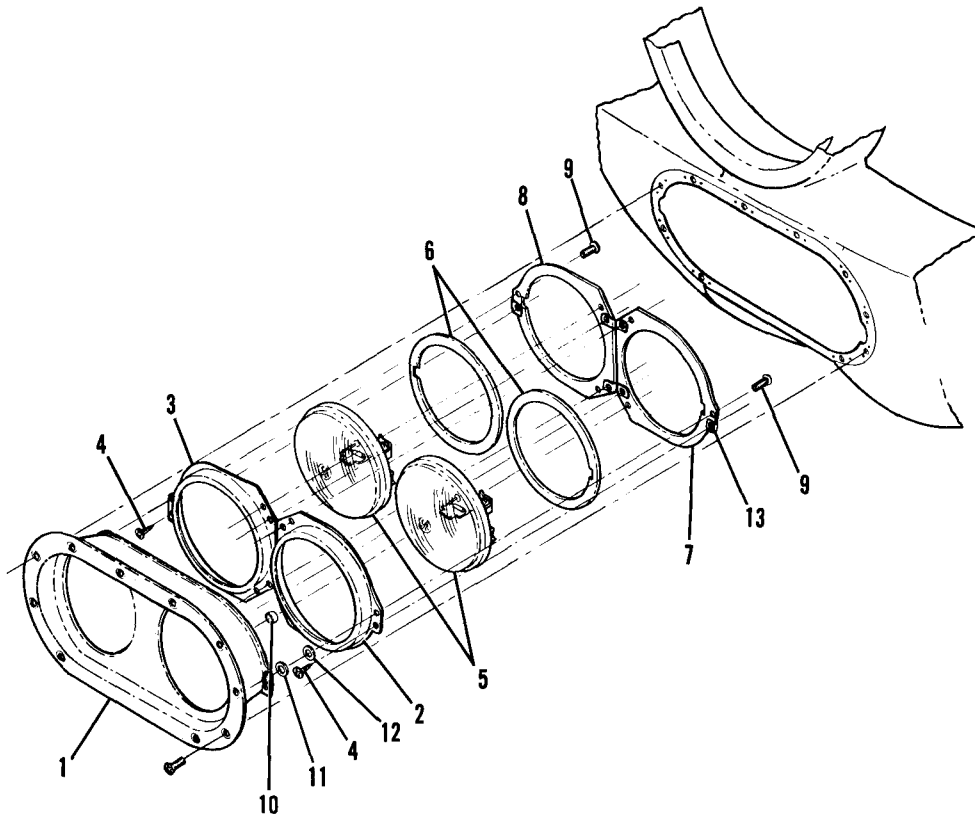


150 SERIAL 15072004 & ON  
F150 SERIAL F15000659 & ON  
A150 SERIAL A1500227 & ON  
FA150 SERIAL FA1500082 & ON

Figure 83A. Landing Light Installation - Cowl

FIGURE AND INDEX NO.	PART NUMBER	DESCRIPTION	UNITS PER ASSY	USABLE ON CODE
83A-		LANDING LIGHT INSTALLATION-COWL -----	NP	A
- 1	0452013-2	COVER-COWL LIGHT -----	1	
		ATTACHING PARTS -----		
- 2	AN515-8R6	SCREW -----	6	
- 3	AN960-8L	WASHER -----	6	
- 4	NAS680A08	NUTPLATE -----	6	
		-----*		
- 5	0452015-2	BRACKET -----	1	B
- 5A	0452015-6	BRACKET -----	1	C
		ATTACHING PARTS -----		
- 6	S1021Z6-8	SCREW -----	3	
- 7	NAS488-1-3	NUT -----	3	
		-----*		
- 8	0452015-7	PLATE -----	1	
		ATTACHING PARTS -----		
- 9	AN515-8R18	SCREW -----	3	B
- 9A	AN515-8R8	SCREW -----	3	C
- 10	0450277-11	SPRING -----	3	B
- 10A	AN960-10	WASHER -----	AR	C
	AN960-10L	WASHER -----	AR	C
		-----*		
- 11	4313	LIGHT GE -----	1	
- 11A	0752646-1	GASKET -----	AR	
- 12	0452014-1	BRACKET ASSEMBLY-LANDING LIGHT SUPPORT -----	1	B
- 12A	0452018-1	BRACKET ASSEMBLY-LANDING LIGHT SUPPORT WEU 0452018-5 -----	1	D
	0452018-5	BRACKET ASSEMBLY-LANDING LIGHT SUPPORT -----	1	E
- 13	NAS680A08	NUTPLATE -----	3	
<p>A---150 SERIAL 15072004 &amp; ON  F150 SERIAL F15000659 &amp; ON  A150 SERIAL A1500227 &amp; ON  FA150 SERIAL FA1500082 &amp; ON</p> <p>B---150 SERIAL 15072004 THRU 15072628  F150 SERIAL F15000659 THRU F15000738  A150 SERIAL A1500227 THRU A1500276  FA150 SERIAL FA1500082 THRU FA1500166</p> <p>C---150 SERIAL 15072629 &amp; ON  F150 SERIAL F15000739 &amp; ON  A150 SERIAL A1500277 &amp; ON  FA150 SERIAL FA1500167 &amp; ON</p> <p>D---150 SERIAL 15072629 THRU 15074012  F150 SERIAL F15000739 THRU F15000903  A150 SERIAL A1500277 THRU A1500362  FA150 SERIAL FA1500167 THRU FA1500191</p> <p>E---150 SERIAL 15074013 &amp; ON  F150 SERIAL F15000904 &amp; ON  A150 SERIAL A1500363 &amp; ON  FA150 SERIAL FA1500192 &amp; ON</p>				

Electrical Equipment (Cont)



150 SERIAL 15074851 & ON  
F150 SERIAL F15001014 & ON  
A150 SERIAL A1500430 & ON  
FA150 SERIAL FA1500212 & ON

Figure 83B. Landing Light Installation - Cowl

FIGURE AND INDEX NO.	PART NUMBER	DESCRIPTION	UNITS PER ASSY	USABLE ON CODE
		<b>1 2 3 4 5 6 7</b>		
83B-		LANDING LIGHT INSTALLATION-COWL -----	NP	A
- 1	SEE FIG 55A	SUPPORT ASSEMBLY-LANDING LIGHT -----	1	
- 2	1752118-1	BRACKET-LH -----	1	
- 3	1752118-2	BRACKET-RH -----	1	
		ATTACHING PARTS		
- 4	S1021Z6-8	SCREW -----	3	
		---*---		
- 5	4509	BULB-LANDING LIGHT GE -----	2	
- 6	0752646-1	GASKET -----	AR	
- 7	1752118-3	PLATE ASSEMBLY-LH -----	1	
- 8	1752118-4	PLATE ASSEMBLY-RH -----	1	
		ATTACHING PARTS		
- 9	AN515-8R6	SCREW -----	3	
-10	NAS43DD3-12	SPACER LH ONLY -----	1	
-11	AN960-10	WASHER LH ONLY -----	AR	
-12	AN960-10L	WASHER LH ONLY -----	AR	
		---*---		
-13	NAS448-1-3	NUT -----	3	
		A---150 SERIAL 15074851 & ON F150 SERIAL F15001014 & ON A150 SERIAL A1500430 & ON FA150 SERIAL FA1500212 & ON		

Electrical Equipment (Cont)

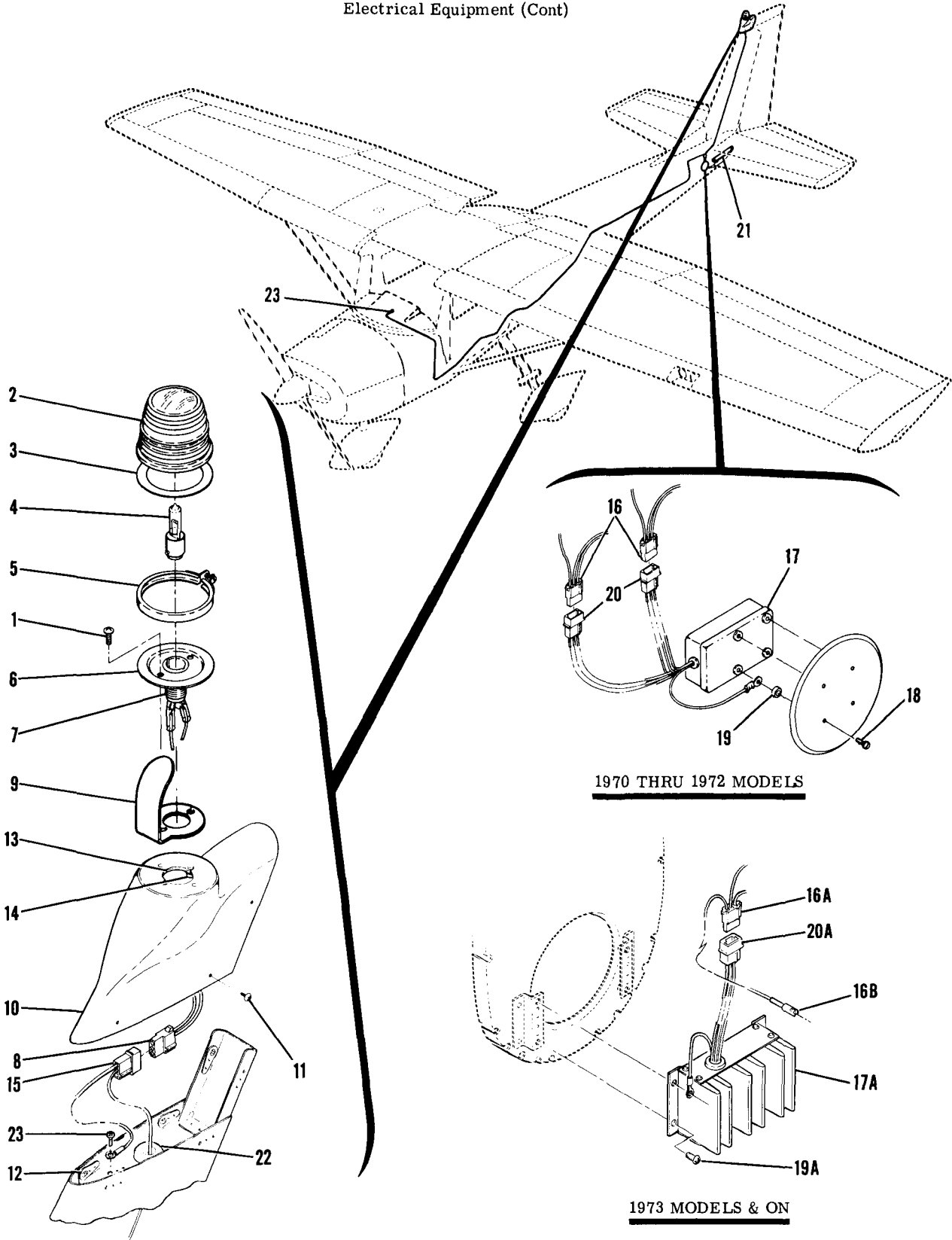
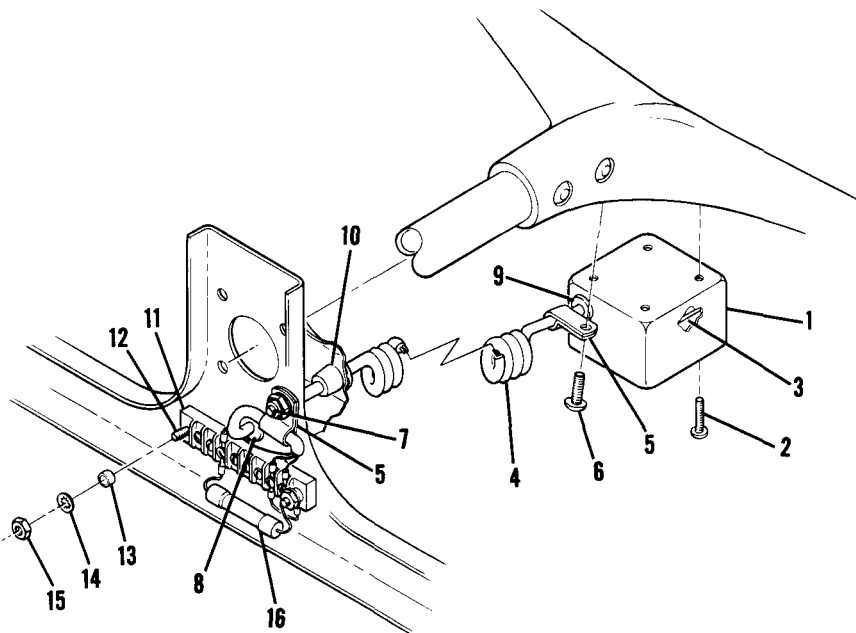


Figure 84. Flashing Beacon Light Installation

FIGURE AND INDEX NO.	PART NUMBER	DESCRIPTION	UNITS PER ASSY	USABLE ON CODE
		<b>1 2 3 4 5 6 7</b>		
84 -	C621001-0103 C621001-0106	FLASHING BEACON LIGHT INSTALLATION ----- LIGHT ASSEMBLY-FLASHING BEACON WEU C621001-0106 ----- LIGHT ASSEMBLY-FLASHING BEACON ----- ATTACHING PARTS -----	NP 1 1	 F G
- 1	AN515-8R8	SCREW ----- *-----	2	
- 2	C17325	DOME AEFS -----	1	
- 3	C17330	GASKET AEFS -----	1	
- 4	C17312-3	BULB-FLASHING BEACON 125 WATT AEFS -----	1	F
- 5	C17326	CLAMP ASSEMBLY AEFS -----	1	
- 6	C17331-3 C17331-6	PLATE-MOUNTING AEFS WEU C17331-6 ----- PLATE-MOUNTING AEFS -----	1 1	F G
- 7	C17313	SOCKET ASSEMBLY AEFS -----	1	
- 8	S1638-1	HOUSING-PLUG -----	1	
- 9	0400215-1	SHIELD -----	1	
-10	0431017-1-791 0430011-3-791	TIP ASSEMBLY-FLASHING BEACON ----- TIP ASSEMBLY-FLASHING BEACON ----- ATTACHING PARTS -----	1 1	H J
-11	S1021Z6-4	SCREW -----	6	
-12	S1862-1	NUTPLATE ----- *-----	6	
-13	0431017-2	PLATE ASSEMBLY-MOUNTING -----	1	
-14	NAS680A08	NUTPLATE -----	2	
-15	S1638-2	HOUSING-CAP -----	1	
-16	S1638-1	HOUSING PLUG -----	1	A
	S1638-1	HOUSING PLUG -----	2	B
-16A	S1638-1	HOUSING PLUG -----	1	E
-16B	S1637-1	HOUSING CAP -----	1	E
-17	C594501-0201 C594501-0203	FLASHER ASSEMBLY-BEACON LIGHT WEU C594501-0203 ----- FLASHER ASSEMBLY-BEACON LIGHT -----	1 1	A B
-17A	C594502-0101	FLASHER ASSEMBLY-BEACON LIGHT ----- ATTACHING PARTS -----	1	E
-18	AN515-8R8	SCREW -----	4	B
-19	NAS43HT3-8	SPACER -----	4	B
-19A	AN515-8R6	SCREW ----- *-----	4	E
-20	S1638-2	HOUSING CAP -----	1	A
	S1638-2	HOUSING CAP -----	2	B
-20A	S1638-2	HOUSING CAP -----	1	E
-21	OR95-1.5	RESISTOR LTVE ----- ATTACHING PARTS -----	1	C
	AN515-8R9 MS21044N08	SCREW ----- NUT ----- *-----	2 2	
-22	MS35489-13	GROMMET -----	1	D
	MS35489-4	GROMMET -----	1	E
-23	AN515-8R6	SCREW -----	1	E
-24	SEE FIG 48 SEE FIG 48	SWITCH ASSEMBLY ----- FUSE -----	1 1	
<p>A---150 SERIAL 15071129 THRU 15071388 F150 SERIAL F15000530 THRU F15000679 A150 SERIAL A1500001 THRU A1500062 FA150 SERIAL FA1500001 THRU FA1500009</p> <p>B---150 SERIAL 15071389 THRU 15073658 F150 SERIAL F15000680 THRU F15000863 A150 SERIAL A1500063 THRU A1500342 FA150 SERIAL FA1500010 THRU FA1500166</p> <p>C---150 SERIAL 15071954 &amp; ON F150 SERIAL F15000659 &amp; ON A150 SERIAL A1500217 &amp; ON FA150 SERIAL FA1500060 &amp; ON</p> <p>D---150 SERIAL 15071129 THRU 15073658 F150 SERIAL F15000530 THRU F15000863 A150 SERIAL A1500001 THRU A1500342 FA150 SERIAL FA1500001 THRU FA1500166</p>				
CONTINUED ON NEXT PAGE				

FIGURE AND INDEX NO.	PART NUMBER	DESCRIPTION	UNITS PER ASSY	USABLE ON CODE
84 -		<p>1 2 3 4 5 6 7</p> <p>E---150 SERIAL 15073659 &amp; ON                      F150 SERIAL F15000864 &amp; ON                      A150 SERIAL A1500343 &amp; ON                      FA150 SERIAL FA1500167 &amp; ON</p> <p>F---150 SERIAL 15071129 THRU 15074396                      F150 SERIAL F15000530 THRU F15001003                      A150 SERIAL A1500001 THRU A1500385                      FA150 SERIAL FA1500001 THRU FA1500209</p> <p>G---150 SERIAL 15074397 &amp; ON                      F150 SERIAL F15001004 &amp; ON                      A150 SERIAL A1500386 &amp; ON                      FA150 SERIAL FA1500210 &amp; ON</p> <p>H---150 SERIAL 15071129 THRU 15075781                      F150 SERIAL F15000530 THRU F15001143                      A150 SERIAL A1500001 THRU A1500523                      FA150 SERIAL FA1500001 THRU FA1500261</p> <p>J---150 SERIAL 15075782 &amp; ON                      F150 SERIAL F15001144 &amp; ON                      A150 SERIAL A1500524 &amp; ON                      FA150 SERIAL FA1500262 &amp; ON</p>		

Electrical Equipment (Cont)

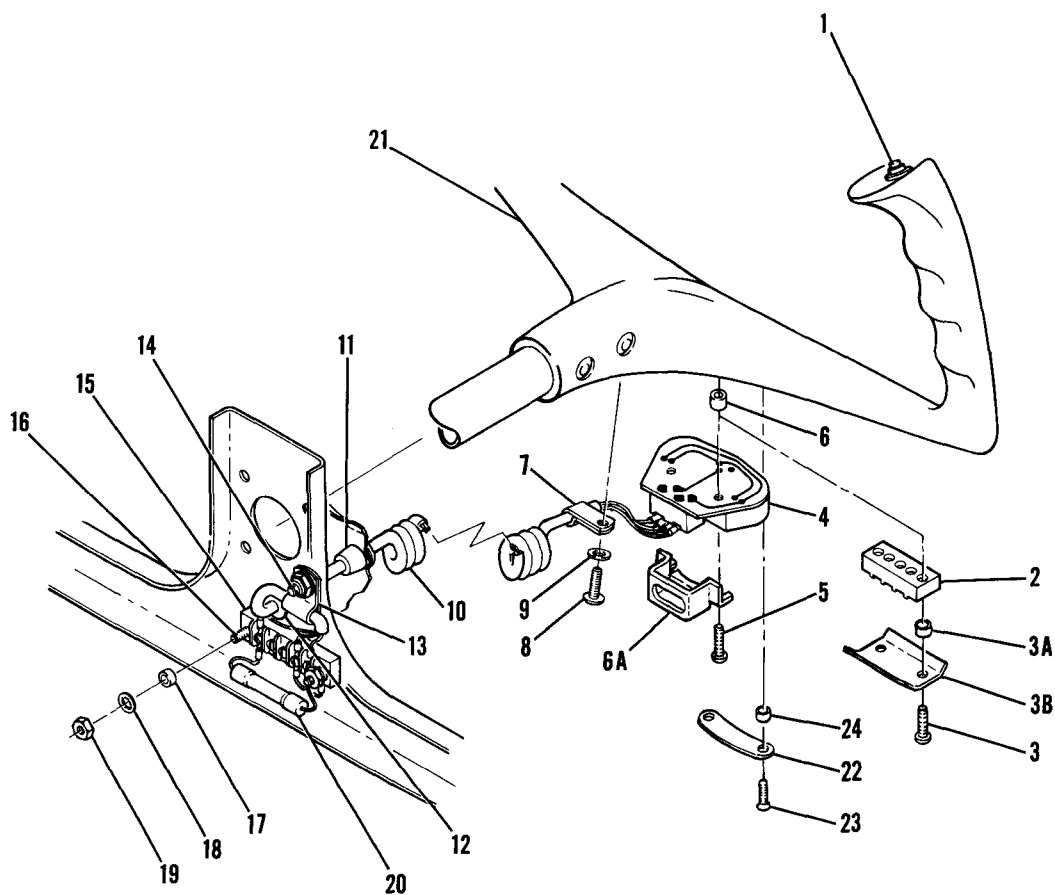


150 SERIAL 15071129 THRU 15072003  
 F150 SERIAL F15000530 THRU F15000658  
 A150 SERIAL A1500001 THRU A1500226  
 FA150 SERIAL FA1500001 THRU FA1500081

Figure 85. Control Wheel Map Light Installation

FIGURE AND INDEX NO.	PART NUMBER	DESCRIPTION	UNITS PER ASSY	USABLE ON CODE
85		<b>1 2 3 4 5 6 7</b>		
- 1	1770009-1	CONTROL WHEEL MAP LIGHT INSTALLATION	NP	A
		SHIELD	1	
		ATTACHING PARTS		
- 2	AN515-2R10	SCREW	4	
	S1959-1	INSERT	4	
		-----*		
- 3	1570142-3	CIRCUIT BOARD ASSEMBLY-MAP LIGHT	1	
- 4	8499	COILED CORD BDN	1	
		ATTACHING PARTS		
- 5	S1115-3	CLAMP	2	
- 6	AN515-8R5	SCREW	1	
	AN960-8L	WASHER	1	
	S1559-2	INSERT	1	
- 7	AN515-6R10	SCREW	1	
	AN960-6L	WASHER	1	
	MS21044N06	NUT	1	
		-----*		
- 8	MS5489-33	GROMMET	1	
- 9	MS35489-4	GROMMET	1	
-10	K-375-125	BUSHING-SNUB HEMA	1	
-11	8-171	TERMINAL BLOCK CIN	1	
		ATTACHING PARTS		
-12	AN507-440-7	SCREW	2	
-13	NAS43000-6	SPACER	2	
-14	AN936A4	WASHER	2	
-15	AN340-4	NUT	2	
		-----*		
-16	1570141-1	FUSE ASSEMBLY-MAP LIGHT	1	
		A---150 SERIAL 15071129 THRU 15072003		
		F150 SERIAL F15000530 THRU F15000658		
		A150 SERIAL A1500001 THRU A1500226		
		FA150 SERIAL FA1500001 THRU FA1500081		

Electrical Equipment (Cont)

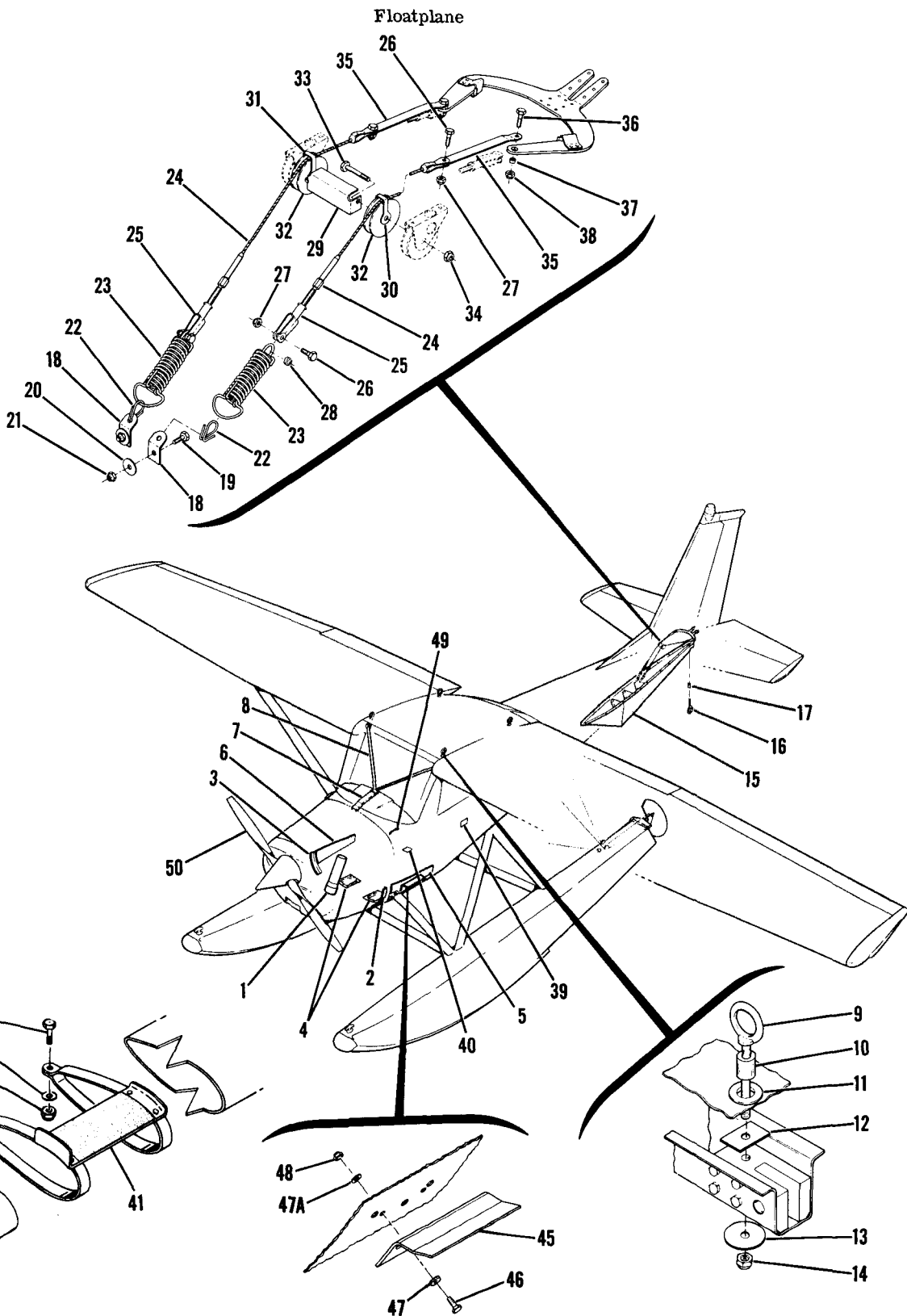


150 SERIAL 15072004 & ON  
 F150 SERIAL F15000659 & ON  
 A150 SERIAL A1500227 & ON  
 FA150 SERIAL FA1500082 & ON

Figure 85A. Control Wheel Map Light & Mike Switch Installation

FIGURE AND INDEX NO.	PART NUMBER	DESCRIPTION	UNITS PER ASSY	USABLE ON CODE
<b>1 2 3 4 5 6 7</b>				
85A-		CONTROL WHEEL MAP LIGHT & MIKE SWITCH INSTALLATION -----	NP	A
- 1	S1985-1	SWITCH-MIKE -----	1	
- 2	351-11-03-001	TERMINAL BLOCK-MIKE SWITCH CIN USED ----- WHEN MAPLIGHT IS NOT INSTALLED	1	
		ATTACHING PARTS		
- 3	AN515-2R6	SCREW -----	2	B
	AN515-2R10	SCREW -----	2	C
	S1959-1	INSERT -----	2	
- 3A	NAS43DD0-9	SPACER -----	2	C
- 3B	0570096-1	COVER-TERMINAL BLOCK -----	1	C
		-----*		
- 4	0570088-1	MAP LIGHT ASSY -----	1	D
	0570088-3	MAP LIGHT ASSY -----	1	E
		ATTACHING PARTS		
- 5	AN515-2R12	SCREW -----	AR	
	AN515-2R14	SCREW -----	AR	
	AN515-2R16	SCREW -----	AR	
- 6	NAS43DD0-14	SPACER -----	AR	
	NAS43DD0-15	SPACER -----	AR	
	NAS43DD0-16	SPACER -----	AR	
	NAS43DD0-17	SPACER -----	AR	
	NAS43DD0-18	SPACER -----	AR	
	NAS43DD0-19	SPACER -----	AR	
	S1959-1	INSERT -----	2	
- 6A	0570095-1	COVER-TERMINAL BLOCK -----	1	C
		-----*		
- 7	S1155-3	CLAMP -----	1	
		ATTACHING PARTS		
- 8	AN515-8R5	SCREW -----	1	
- 9	AN960-8L	WASHER -----	1	
	S1959-2	INSERT -----	1	
		-----*		
-10	8409	CABLE-RETRACTILE BDN -----	1	
-11	K375-125	BUSHING-SNUB HEMA -----	1	
-12	MS35489-33	GROMMET -----	1	
-13	S1155-3	CLAMP -----	1	
		ATTACHING PARTS		
-14	AN515-6R10	SCREW -----	1	
	AN960-6L	WASHER -----	1	
	MS21044N06	NUT -----	1	
		-----*		
-15	351-11-05-001	TERMINAL BLOCK CIN -----	1	
		ATTACHING PARTS		
-16	AN515-4R7	SCREW -----	2	
-17	NAS43DD0-6	SPACER -----	2	
-18	AN936A4	WASHER -----	2	
-19	AN340-4	NUT -----	2	
		-----*		
-20	1570141-1	FUSE ASSEMBLY-MAP LIGHT -----	1	
-21	SEE FIG 64	CONTROL WHEEL ASSEMBLY -----	1	
-22	0570094-1	SHIELD-MAP LIGHT -----	1	D
		ATTACHING PARTS		
-23	MS51959-5B	SCREW -----	2	D
-24	0570094-2	SPACER -----	2	D
		-----*		
<p>A---150 SERIAL 15072004 &amp; ON  F150 SERIAL F15000659 &amp; ON  A150 SERIAL A1500227 &amp; ON  FA150 SERIAL FA1500082 &amp; ON</p> <p>B---150 SERIAL 15072004 THRU 15072618  F150 SERIAL F15000659 THRU F15000738  A150 SERIAL A1500227 THRU A1500276  FA150 SERIAL FA1500082 THRU FA1500121</p> <p>C---150 SERIAL 15072619 &amp; ON  F150 SERIAL F15000739 &amp; ON  A150 SERIAL A1500277 &amp; ON  FA150 SERIAL FA1500122 &amp; ON</p> <p>D---150 SERIAL 15072004 THRU 15073658  F150 SERIAL F15000659 THRU F15000863  A150 SERIAL A1500227 THRU A1500342  FA150 SERIAL FA1500082 THRU FA1500166</p> <p>E---150 SERIAL 15073659 &amp; ON  F150 SERIAL F15000864 &amp; ON  A150 SERIAL A1500343 &amp; ON  FA150 SERIAL FA1500167 &amp; ON</p>				

FIGURE AND INDEX NO.	PART NUMBER	DESCRIPTION	UNITS PER ASSY	USABLE ON CODE
		<b>1 2 3 4 5 6 7</b>		
86 -		FLOATPLANE FITTINGS INSTALLATION ED088A-1650 -----	NP	A
- 1	0451116-1	FILLER TUBE-ENGINE MOUNT -----	1	
	TY-42	PLUG-FILLER TUBE CLOV -----	1	
- 2	0452005-1	STIFFENER-COWL LH -----	1	
- 3	0452005-2	STIFFENER-COWL RH -----	1	
- 4	0413352-1	COVER-STEERING ARM -----	2	
		ATTACHING PARTS		
	S102128-8	SCREW -----	12	
	NAS446-4-3	NUT -----	12	
		-----*		
- 5	0413351-1	DOUBLER-FUSELAGE LH -----	1	
- 6	0413351-2	DOUBLER-FUSELAGE RH -----	1	
- 7	0413431-1	STIFFENER-COWL DECK -----	1	
- 8	0413432-12	BRACE ASSY-FLOATPLANE COWL DECK -----	1	
		ATTACHING PARTS		
	AN4-12A	BOLT -----	1	
	MS21042L4	NUT -----	1	
	AN3-31A	BOLT -----	4	
	AN960-10	WASHER -----	4	
	MS21044N3	NUT -----	4	
		-----*		
- 9	0541115-3	EYEBOLT-HOISTING -----	4	
-10	0541115-2	SPACER -----	4	
-11	MS35488-17	GROMMET -----	4	
-12	0541115-4	PLATE -----	4	
-13	AN970-5	WASHER -----	4	
-14	MS21042L5	NUT -----	4	
CONTINUED ON NEXT PAGE				

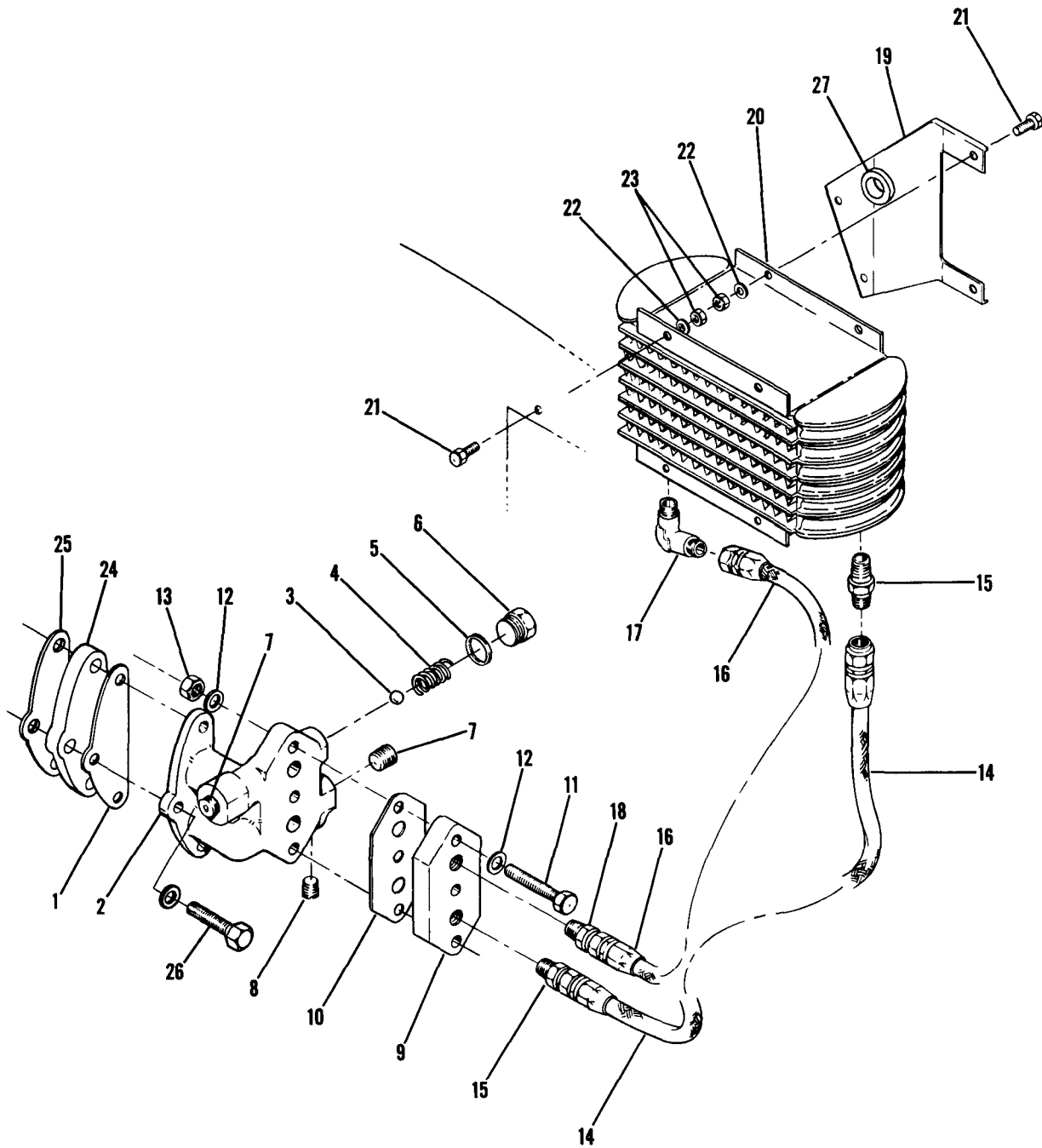


150 SERIAL 15071129 THRU 15072003  
F150 SERIAL F15000530 THRU F15000658

Figure 86. Floatplane Fittings Installation

FIGURE AND INDEX NO.	PART NUMBER	DESCRIPTION	UNITS PER ASSY	USABLE ON CODE
86 -15	0431020-2	FIN ASSEMBLY-VENTRAL ATTACHING PARTS	1	
	AN525-832R10	SCREW	22	
	AN936A8	WASHER	22	
	S1613-08-75	RIVNUT	20	
	NAS698A08	NUTPLATE	2	
		---*---		
-16	0523613-2	EYEBOLT	1	
-17	NAS43HT5-40	SPACER	1	
-18	0460196-2	CLIP-RUDDER CENTRALIZER ATTACHING PARTS	2	
-19	AN3-5A	BOLT	1	
-20	AN970-3	WASHER	1	
-21	MS21044N3	NUT	1	
		---*---		
-22	0742200-6	LINK-RUDDER CENTRALIZER	2	
-23	0460195-1	SPRING ASSEMBLY-RUDDER CENTRALIZER	2	
-24	0400107-151	CABLE ASSEMBLY-RUDDER CENTRALIZER ATTACHING PARTS	2	
-25	AN486-4	CLEVIS	1	
-26	AN3-5A	BOLT	2	
-27	MS21044N3	NUT	2	
-28	NAS43HT3-9	SPACER	1	
		---*---		
-29	0460197-1	STIFFENER-RUDDER PULLEY BRACKET	1	
-30	0460198-1	GUARD-CABLE LH	1	
-31	0460198-2	GUARD-CABLE RH	1	
-32	S378-3	PULLEY ATTACHING PARTS	2	
-33	AN4-14A	BOLT	1	
-34	MS21042L4	NUT	1	
		---*---		
-35	0460196-1	LINK-RUDDER CENTRALIZER ATTACHING PARTS	2	
-36	AN3-7A	BOLT	1	
-37	NAS74A3-004	BUSHING	1	
	NAS74A3-004P	BUSHING	1	
-38	MS21044N3	NUT	1	
		---*---		
-39	1205001-11	PLACARD-OPERATIONAL LIMITATIONS	1	FLOATPLANE
-40	0410218-6	PLATE ASSEMBLY-FUEL INDICATOR	1	STANDARD RANGE
		WEU 0410218-11		
	0410218-7	PLATE ASSEMBLY-FUEL INDICATOR	1	EXTENDED RANGE
		WEU 0410218-13		
-41	0500276-1	STEP ASSEMBLY-STRUT LH	1	
	0500276-2	STEP ASSEMBLY-STRUT RH ATTACHING PARTS	1	
-42	AN3-3A	BOLT	2	
-43	AN960D10L	WASHER	2	
-44	MS21044N3	NUT	2	
		---*---		
-45	0413399-1	STEP-LH	1	
	0413399-2	STEP-RH ATTACHING PARTS	1	
-46	AN3-5A	BOLT	2	
-47	AN960D10L	WASHER	2	
-47A	AN970-3	WASHER	2	
-48	MS21044N3	NUT	2	
		---*---		
-49	1613224-2	HANDLE ATTACHING PARTS	2	
	S1450-4H12-050	WASHER	2	
	AN960-416L	WASHER	2	
	MS21042L4	NUT	2	
		---*---		
-50	SEE FIG 53	PROPELLER & SPINNER INSTALLATION	1	
	SEE FIG 59	BAFFLE ASSEMBLY-VERTICAL REAR	1	
	SEE FIG 87	OIL COOLER INSTALLATION	1	
NOTE. STAINLESS STEEL CONTROL CABLES ARE REQUIRED ON FLOATPLANE				
A---150 SERIAL 15071129 THRU 15072003 F150 SERIAL F15000530 THRU F15000658				

Floatplane (Cont)



150 SERIAL 15071129 THRU 15072003  
F150 SERIAL F15000530 THRU F15000658

Figure 87. Oil Cooler Installation - Floatplane

FIGURE AND INDEX NO.	PART NUMBER	DESCRIPTION	UNITS PER ASSY	USABLE ON CODE
87 -		OIL COOLER INSTALLATION-FLOATPLANE -----	NP	A
- 1	22344	GASKET CM -----	1	
- 2	4763	ADAPTER-OIL COOLER CM -----	1	
- 3	2849	BALL-7/16 IN. STEEL CM -----	1	
- 4	2848	SPRING CM -----	1	
- 5	AN900-10	GASKET CM -----	1	
- 6	2265	PLUG CM -----	1	
- 7	20288	PLUG CM -----	2	
- 8	2024	PLUG CM -----	1	
- 9	0450035-1	ADAPTER-OIL COOLER -----	1	
		ATTACHING PARTS -----		
-10	0456003-3	GASKET -----	1	
-11	AN6-16A	BOLT -----	3	
-12	AN960PD616	WASHER -----	6	
-13	MS21042L6	NUT -----	3	
		-----*		
-14	S1236-6-0074	HOSE ASSEMBLY -----	1	
		ATTACHING PARTS -----		
-15	AN816-6-6D	NIPPLE -----	2	
		-----*		
-16	S1236-6-0094	HOSE ASSEMBLY -----	1	
		ATTACHING PARTS -----		
-17	MS20822-6-6D	ELBOW -----	1	
-18	AN816-6-6D	NIPPLE -----	1	
		-----*		
-19	0450034-2	BRACKET -----	1	
-20	8526250	OIL COOLER HR -----	1	
		ATTACHING PARTS -----		
-21	AN3-4A	BOLT -----	6	
-22	AN960PD10L	WASHER -----	6	
-23	MS21045L3	NUT -----	2	
		-----*		
-24	0456003-5	SPACER -----	1	
-25	22344	GASKET CM -----	1	
-26	MS20074-05-12	BOLT -----	3	
-27	MS35489-20	GROMMET -----	1	
A---150 SERIAL 15071129 THRU 15072003 F150 SERIAL F15000530 THRU F15000658				