

Alighting Gear

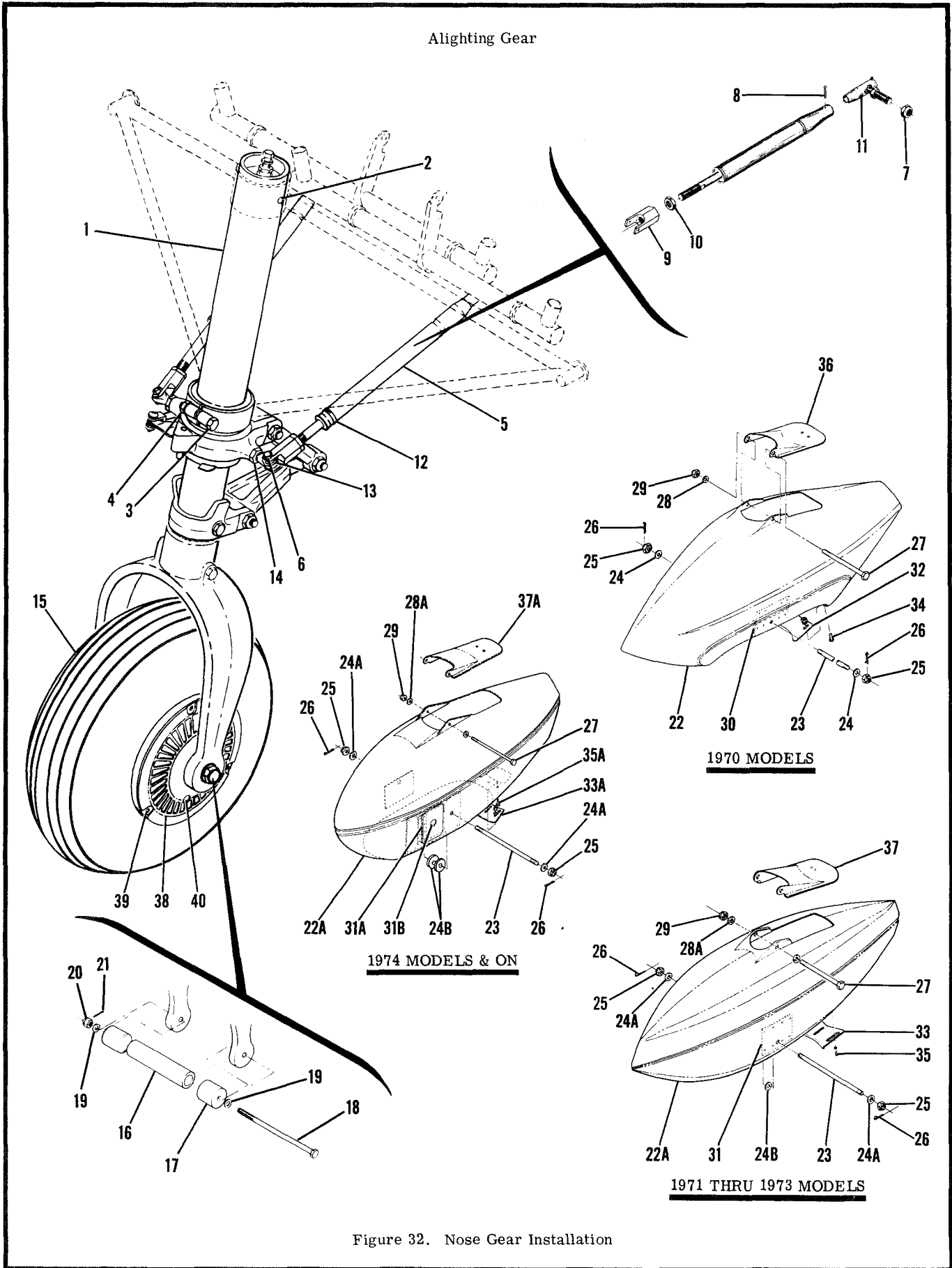


Figure 32. Nose Gear Installation

FIGURE AND INDEX NO.	PART NUMBER	DESCRIPTION	UNITS PER ASSY	USABLE ON CODE
		1 2 3 4 5 6 7		
32 -32	0743625-11	SCRAPER -----	1	A
-33	0541205-2	SCRAPER -----	1	H
-33A	0541221-2	SCRAPER -----	1	L
		ATTACHING PARTS		
-34	AN520-10R10	SCREW -----	3	A
-35	AN520-10R6	SCREW -----	3	H
-35A	AN520-10R12	SCREW -----	3	L
	AN960-10	WASHER -----	3	K
	AN960-10	WASHER -----	6	L
	MS21044N3	NUT -----	3	
		---*---		
-36	0743625-7	COVER PLATE ASSEMBLY -----	1	A
-37	0743625-15	COVER PLATE ASSEMBLY -----	1	H
-37A	0743625-17	COVER PLATE ASSEMBLY -----	1	L
-38	0743627-3	CAP-NOSE WHEEL HUB VALVE STEM SIDE -----	1	F
	0743627-4	CAP-NOSE WHEEL HUB -----	1	F
	0743627-5	CAP-NOSE WHEEL HUB VALVE STEM SIDE -----	1	G
	0743627-6	CAP-NOSE WHEEL HUB -----	1	G
		ATTACHING PARTS		
-39	AN515-8R4	SCREW USED WITH 1241156-12 & C163002-0201 WHEEL ASSY -----	3	
	S2191-8-4	SCREW USED WITH C163003-0201, C163003-0401 & -----	3	
		C163005-0201 WHEEL ASSY		
	AN936A8	WASHER -----	3	
		---*---		
-40	6241M	EXTENSION-VALVE .75 IN LONG DL -----	1	F
	3680C	EXTENSION-VALVE .75 IN LONG SV ALT -----	1	F
	6241B	EXTENSION-VALVE .50 IN LONG DL -----	1	G
		NOTE. *THIS WHEEL IS AN ALTERNATE CODE B & ON		
		A---150 SERIAL 15071129 THRU 15072003 F150 SERIAL F15000530 THRU F15000658 A150 SERIAL A1500001 THRU A1500226 FA150 SERIAL FA1500001 THRU FA1500081		
		B---150 SERIAL 15072004 & ON F150 SERIAL F15000659 & ON A150 SERIAL A1500227 & ON FA150 SERIAL FA1500082 & ON		
		C---150 SERIAL 15072004 THRU 15072839 F150 SERIAL F15000659 THRU F15000778 A150 SERIAL A1500227 THRU A1500292 FA150 SERIAL FA1500082 THRU FA1500161		
		D---150 SERIAL 15071129 THRU 15072839 F150 SERIAL F15000530 THRU F15000778 A150 SERIAL A1500001 THRU A1500292 FA150 SERIAL FA1500001 THRU FA1500161		
		E---150 SERIAL 15072840 & ON F150 SERIAL F15000779 & ON A150 SERIAL A1500293 & ON FA150 SERIAL FA1500162 & ON		
		F---150 SERIAL 15071129 THRU 15072983 F150 SERIAL F15000530 THRU F15000818 A150 SERIAL A1500001 THRU A1500304 FA150 SERIAL FA1500001 THRU FA1500161		
		G---150 SERIAL 15072984 & ON F150 SERIAL F15000819 & ON A150 SERIAL A1500305 & ON FA150 SERIAL FA1500162 & ON		
		H---150 SERIAL 15072004 THRU 15074850 F150 SERIAL F15000659 THRU F15001013 A150 SERIAL A1500227 THRU A1500429 FA150 SERIAL FA1500082 THRU FA1500211		
		J---150 SERIAL 15072840 THRU 15074850 F150 SERIAL F15000779 THRU F15001013 A150 SERIAL A1500293 THRU A1500429 FA150 SERIAL FA1500162 THRU FA1500211		
		K---150 SERIAL 15071129 THRU 15074850 F150 SERIAL F15000530 THRU F15001013 A150 SERIAL A1500001 THRU A1500429 FA150 SERIAL FA1500001 THRU FA1500211		
		L---150 SERIAL 15074851 & ON F150 SERIAL F15001014 & ON A150 SERIAL A1500430 & ON FA150 SERIAL FA1500212 & ON		

Alighting Gear (Cont)

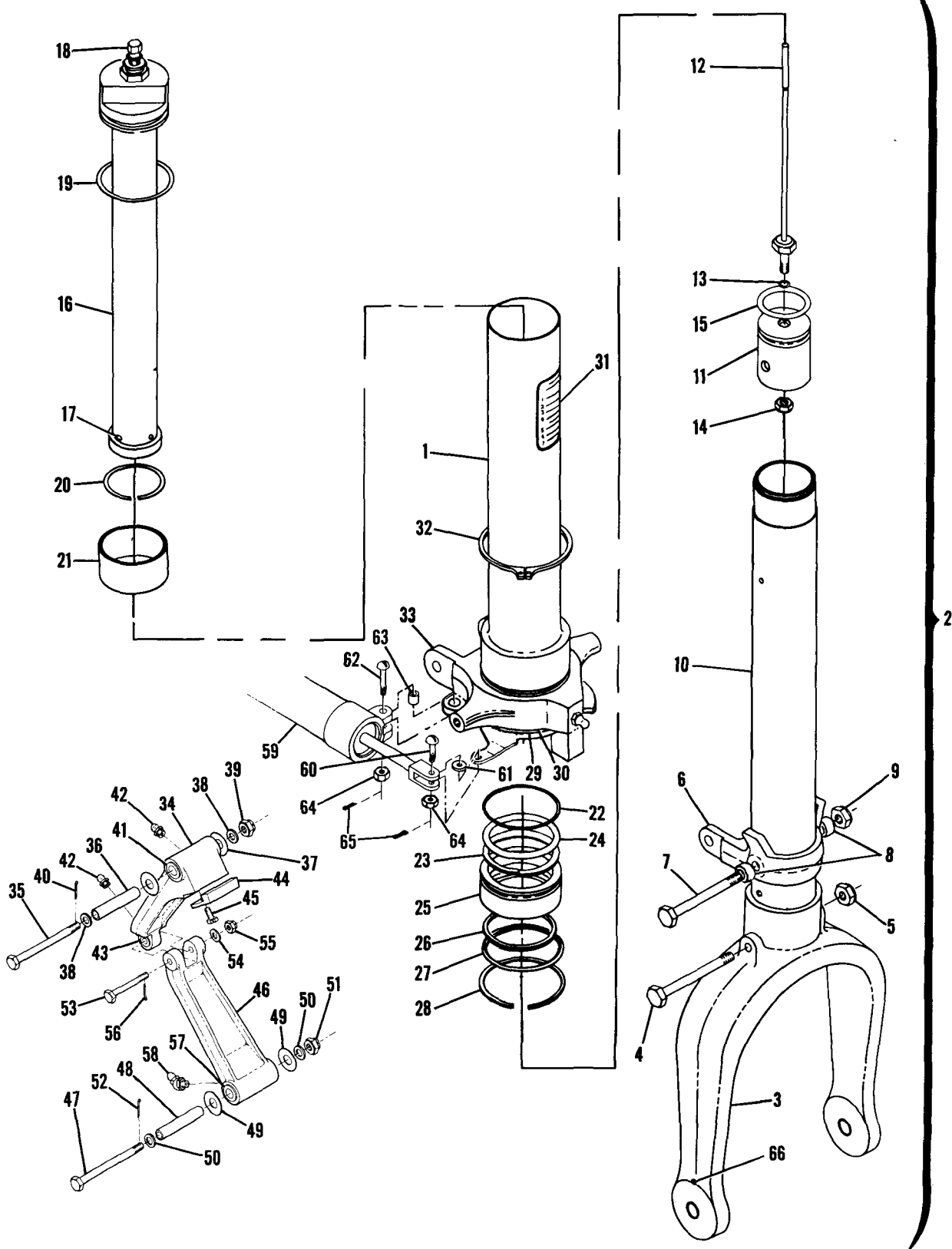


Figure 33. Nose Gear Strut Assembly

FIGURE AND INDEX NO.	PART NUMBER	DESCRIPTION							UNITS PER ASSY	USABLE ON CODE
		1	2	3	4	5	6	7		
33 -	0442504-10	STRUT ASSEMBLY-NOSE GEAR WEU 0442504-13							1	A
- 1	0442504-13 *	STRUT ASSEMBLY-NOSE GEAR							1	B
- 2	0543008-6	TUBE-SHOCK STRUT							1	
- 2	0442504-200	SHOCK STRUT ASSEMBLY-LOWER WEU 0442504-201							1	A
- 3	0442504-201 *	SHOCK STRUT ASSEMBLY-LOWER							1	B
- 3	SK150-11	FORK-NOSE GEAR REPLACEMENT							1	
- 4	AN5-33A	ATTACHING PARTS								
- 5	MS21042L5	BOLT							1	
- 5		NUT							1	
- 6		FITTING							NP	
- 6		ATTACHING PARTS								
- 7	AN5-43A	BOLT							1	
- 8	0743009-1	SPACER							2	
- 9	MS21042L5	NUT							1	
-10		TUBE-INNER							NP	
-11	0743612-1	PLUG-PIN BASE							1	
-12	0442017-1	PIN-METERING							1	
-12		ATTACHING PARTS								
-13	AN6227B5	O RING							1	
-14	MS21042L4	NUT							1	
-15	AN6227B26	O RING							1	
-16	0543000-27	ORIFICE-PISTON SUPPORT ASSEMBLY							1	
-17	AN500A6-8	SCREW							4	
-18	0543036-1	VALVE ASSEMBLY							1	
-19	AN901-5A	GASKET							1	
-19	AN6230B3	O RING							1	
-20	0841200-19	LOCK RING							1	
-21	1243021-1	BEARING							1	
-22	AN6230B6	O RING							1	
-23	S1628-329	RING-BACK UP							2	
-24	AN6227B32	O RING							1	
-25	1243626-1	RING-PACK SUPPORT							1	
-26	S11065-21	SCRAPER SHWS							1	
-27	0841200-15	RING-PACK RETAINER							1	
-28	0841200-25	LOCK RING							1	
-29	0543029	WASHER							1	
-30	1243030-5	SHIM .006 THICK							AR	
-30	1243030-6	SHIM .012 THICK							AR	
-30	1243030-7	SHIM .020 THICK							AR	
-31	0442145-1	PLACARD-NOSE GEAR SHOCK STRUT							1	
-32	MS16624-1275	RING-RETAINER							1	
-33	0743011-6	ARM ASSEMBLY-STEERING							1	
-33	B4416D	BEARING TOR							1	
-33	AN944-101A	FITTING-LUBRICATION							1	
-34	0442506-1	LINK ASSEMBLY-TORQUE UPPER							1	
-34		ATTACHING PARTS								
-35	AN4-31	BOLT							1	
-36	0543047-1	SPACER							1	
-37	0543048-1	SHIM							AR	
-38	AN960-416L	WASHER							2	
-39	AN310-4	NUT							1	
-40	MS24665-134	PIN-COTTER							1	
-41	NAS77-6-88	BUSHING							2	
-42	AN944-101A	FITTING-LUBRICATOR							2	
-43	NAS77-3-23	BUSHING							2	
-44	0442506-8	STOP LUG							1	
-44		ATTACHING PARTS								
-45	AN3-3A	BOLT							2	
-45	0442506-9	LUG-SAFETY							1	

CONTINUED ON NEXT PAGE

FIGURE AND INDEX NO.	PART NUMBER	DESCRIPTION	UNITS PER ASSY	USABLE ON CODE
33 -46	0442506-2	LINK ASSEMBLY-TORQUE LOWER ----- ATTACHING PARTS	1	
-47	AN4-31	BOLT -----	1	
-48	0543047-1	SPACER -----	1	
-49	0543048-1	SHIM -----	AR	
-50	AN960-416L	WASHER -----	AR	
-51	AN310-4	NUT -----	1	
-52	MS24665-134	PIN-COTTER -----	1	
-53	NAS464-3-22	BOLT -----	1	
-54	AN960-10L	WASHER -----	1	
-55	AN310-3	NUT -----	1	
-56	MS24665-132	PIN-COTTER ----- ---*---	1	
-57	NAS77-6-88	BUSHING -----	2	
-58	MS15002-3	FITTING-LUBRICATOR -----	1	
-59	SEE FIG 35	DAMPENER ASSEMBLY ----- ATTACHING PARTS	1	
-60	AN23-11	BOLT -----	1	
-61	AN960-10L	WASHER -----	AR	
-62	AN23-17	BOLT -----	1	
-63	NAS75-3-009	SPACER -----	1	
-64	AN320-3	NUT -----	2	
-65	MS24665-132	PIN-COTTER ----- ---*---	2	
-66	NAS561P4-10	PIN-ROLL -----	2	
<p>NOTE. *WHEN INITIALLY ORDERING THIS PART FOR AIRCRAFT PRIOR TO SERIALS 15072840, F15000779, A1500293 & FA1500162 ALSO ORDER ONE AN7-74 BOLT, TWO AN960C716 WASHERS, ONE AN320-7 NUT, ONE MS24665-285 COTTER PIN & TWO 0442143-2 FERRULES.</p> <p>A---150 SERIAL 15071129 THRU 15072839 F150 SERIAL F15000530 THRU F15000778 A150 SERIAL A1500001 THRU A1500292 FA150 SERIAL FA1500001 THRU FA1500161</p> <p>B---150 SERIAL 15072840 & ON F150 SERIAL F15000779 & ON A150 SERIAL A1500293 & ON FA150 SERIAL FA1500162 & ON</p>				

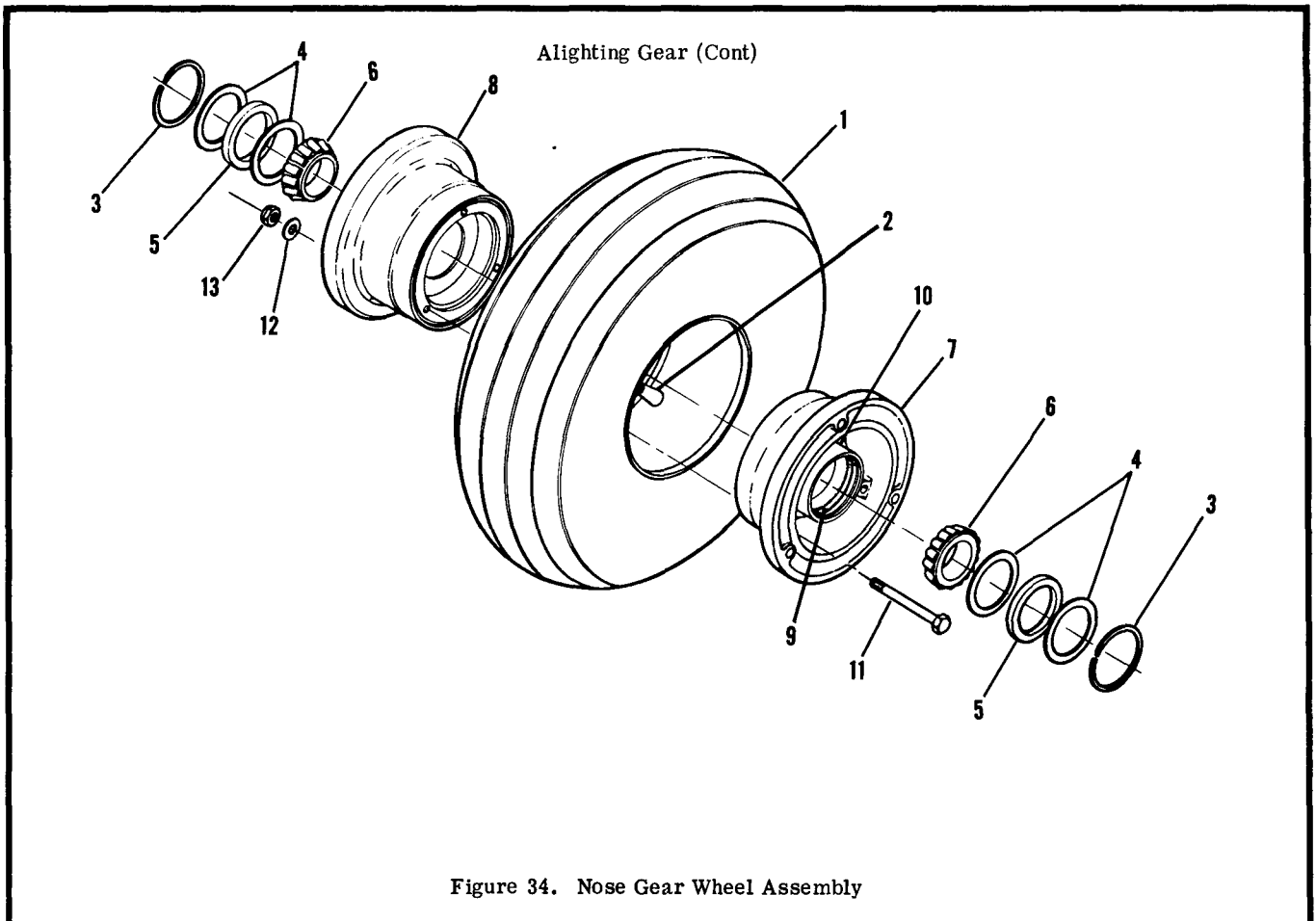
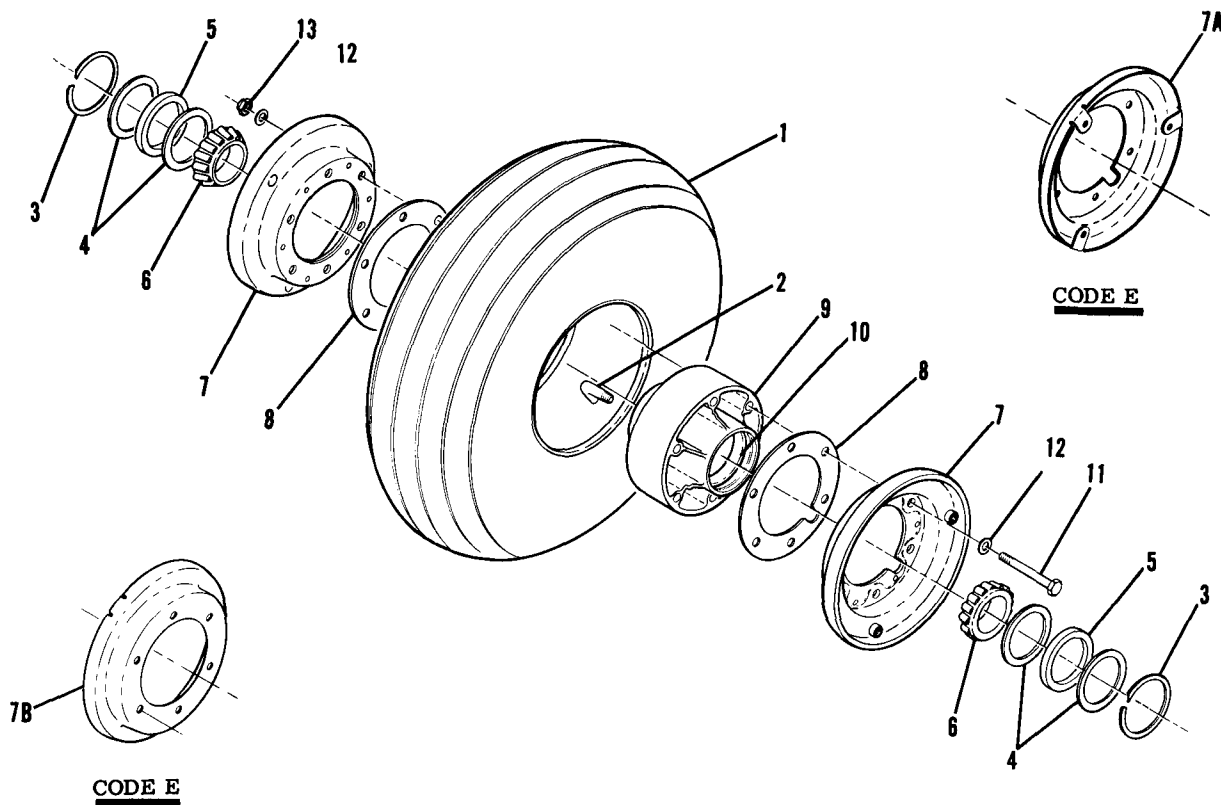


Figure 34. Nose Gear Wheel Assembly

FIGURE AND INDEX NO.	PART NUMBER	DESCRIPTION	UNITS PER ASSY	USABLE ON CODE
34 -		1 2 3 4 5 6 7		
- 1	C262003-0102	WHEEL ASSEMBLY-NOSE GEAR -----	NP	
	C262001-0102	TIRE-BLACKWALL 5.00X5 4 PLY RATED -----	1	
	C262001-0202	TIRE-WHITEWALL 5.00X5 4 PLY RATED WEU C262001-0202 -----	1	
	C262004-0101	TIRE-WHITEWALL 5.00X5 6 PLY RATED -----	1	A
	C262023-0101	TIRE-WHITEWALL 5.00X5 4 PLY RATED -----	1	B
- 2	1241156-12 *	TUBE-5.00X5 -----	1	
- 3	155-00200	WHEEL ASSEMBLY CFP 40-77 -----	1	
- 4	153-00800	RING CFP -----	2	
- 5	154-00600	RING-GREASE SEAL CFP -----	4	
- 6	214-00400	GREASE SEAL-FELT CFP -----	2	
- 7	161-03100	CONE-BEARING CFP -----	2	
- 8	162-02800	WHEEL HALF-MALE CFP -----	1	
- 9	214-00300	WHEEL HALF-FEMALE CFP -----	1	
-10	217-00100	CUP-BEARING CFP -----	1	
-11	AN4-22A	GROMMET CFP -----	1	
-12	AN960-416	BOLT -----	3	
-13	AN365-428	WASHER -----	3	
		NUT -----	3	
<p>NOTE. *SERIALS 15072004 & ON, F15000659 & ON, A1500227 & ON, FA1500082 & ON THIS WHEEL IS AN ALTERNATE FOR C163002-0201, C163003-0201, C163003-0401 & C163005-0201 WHEELS.</p> <p>A---150 SERIAL 15071129 THRU 15073658 F150 SERIAL F15000530 THRU F15000862 A150 SERIAL A1500001 THRU A1500342 FA150 SERIAL FA1500001 THRU FA1500166</p> <p>B---150 SERIAL 15073659 & ON F150 SERIAL F15000863 & ON A150 SERIAL A1500343 & ON FA150 SERIAL FA1500167 & ON</p>				

Aligning Gear (Cont)

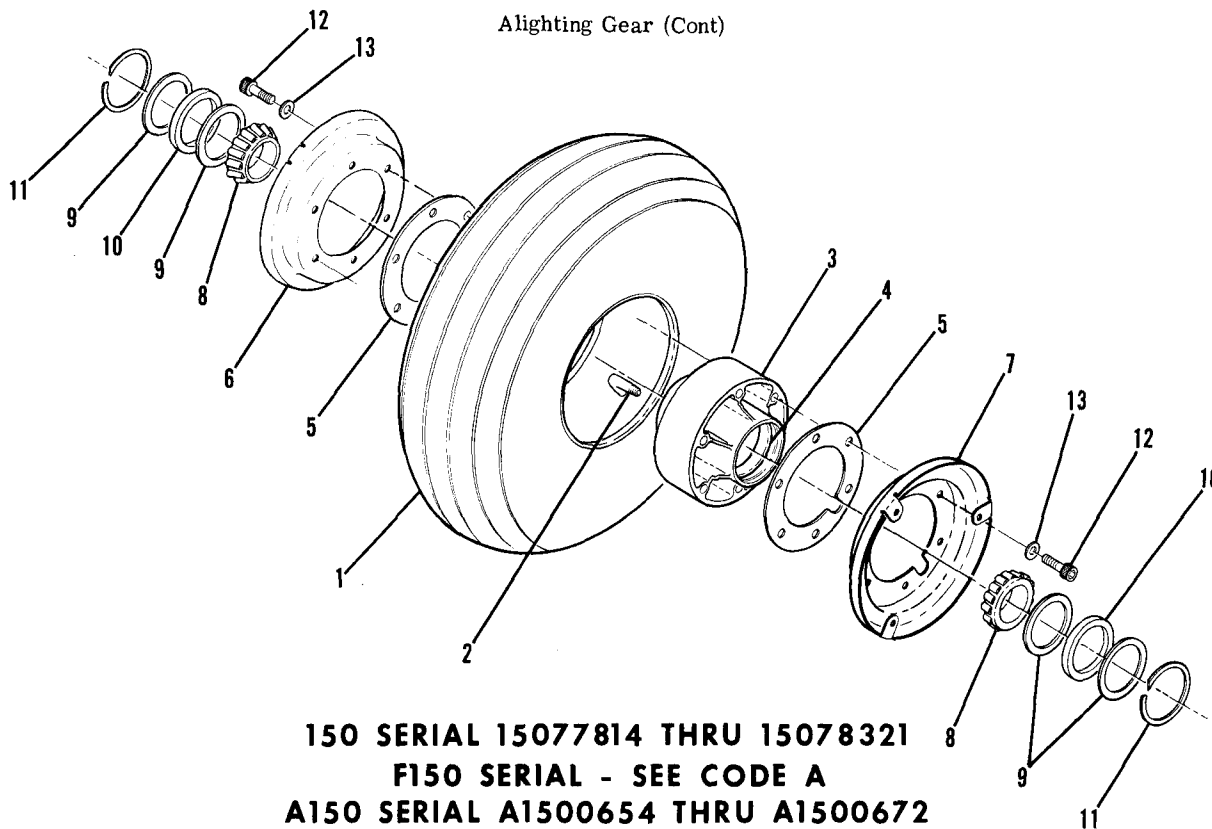


150 SERIAL 15072004 THRU 15077813
F150 SERIAL F15000659 THRU F15001300, F15001307,
F15001310, F15001315 & F15001320
A150 SERIAL A1500227 THRU A1500653
FA150 SERIAL FA1500082 THRU FA1500300

Figure 34A. Nose Gear Wheel Assembly

FIGURE AND INDEX NO.	PART NUMBER	DESCRIPTION							UNITS PER ASSY	USABLE ON CODE
		1	2	3	4	5	6	7		
34A-		WHEEL ASSEMBLY-NOSE GEAR -----							NP	A
- 1	C262003-0102	TIRE-BLACKWALL 5.00X5 4 PLY RATED -----							1	
	C262001-0102	TIRE-WHITWALL 5.00X5 4 PLY RATED -----							1	B
		WEU C262001-0202 -----								
	C262001-0202	TIRE-WHITWALL 5.00X5 6 PLY RATED -----							1	B
	C262004-0101	TIRE-WHITWALL 5.00X5 4 PLY RATED -----							1	C
- 2	C262023-0101	TUBE 5.00X5 -----							1	
	C163002-0201 *	WHEEL ASSEMBLY -----							NP	D
	C163003-0201 *	WHEEL ASSEMBLY -----							NP	E
- 3	A1636-23	RING-RETAINING MCL -----							2	
- 4	A30048	RING-GREASE SEAL MCL -----							4	
- 5	A30047	GREASE SEAL-FELT MCL -----							2	
- 6	A30078-2	BEARING MCL -----							2	
- 7	D30058	FLANGE-WHEEL USE WITH C163002-0201 MCL -----							2	D
- 7A	C30172-1	FLANGE-WHEEL USE WITH C263003-0201 MCL -----							1	E
- 7B	C30172	FLANGE-WHEEL USE WITH C263003-0201 MCL -----							1	E
- 8	B30077	SPACER MCL -----							2	
- 9	C30057	HUB ASSEMBLY MCL -----							1	
-10	A30078-1	CUP-BEARING MCL -----							2	
-11	AN4-24A	BOLT USE WITH C163002-0201 -----							6	D
	A2513-66	BOLT USE WITH C163003-0201 MCL -----							6	E
-12	AN960-416L	WASHER USE WITH C163002-0201 -----							12	D
	A1638-29	WASHER USE WITH C163003-0201 MCL -----							12	E
-13	MS21042L4	NUT USE WITH C163002-0201 -----							6	D
	MS20365-428A	NUT USE WITH C163003-0201 MCL -----							6	E
<p>NOTE. *WHEN ORDERING COMPLETE WHEEL ASSY ORDER C163005-0201, SEE FIG 34C.</p> <p>A---150 SERIAL 15072004 THRU 15077813 F150 SERIAL F15000659 THRU F15001300, F15001307, F15001310, F15001315 & F15001320 A150 SERIAL A1500227 THRU A1500653 FA150 SERIAL FA1500082 THRU FA1500300</p> <p>B---150 SERIAL 15072004 THRU 15073658 F150 SERIAL F15000659 THRU F15000863 A150 SERIAL A1500227 THRU A1500342 FA150 SERIAL FA1500082 THRU FA1500166</p> <p>C---150 SERIAL 15073659 THRU 15077813 F150 SERIAL F15000864 THRU F15001300, F15001307, F15001310, F15001315 & F15001320 A150 SERIAL A1500343 THRU A1500653 FA150 SERIAL FA1500167 THRU FA1500300</p> <p>D---150 SERIAL 15072004 THRU 15074403 F150 SERIAL F15000659 THRU F15001073 A150 SERIAL A1500227 THRU A1500389 FA150 SERIAL FA1500082 THRU FA1500236</p> <p>E---150 SERIAL 15074404 THRU 15077813 F150 SERIAL F15001074 THRU F15001300, F15001307, F15001310, F15001315 & F15001320 A150 SERIAL A1500390 THRU A1500653 FA150 SERIAL FA1500237 THRU FA1500300</p>										

Alighting Gear (Cont)



150 SERIAL 15077814 THRU 15078321
 F150 SERIAL - SEE CODE A
 A150 SERIAL A1500654 THRU A1500672
 FA150 SERIAL FA1500301 THRU FA1500311

Figure 34B. Nose Gear Wheel & Tire Assembly

FIGURE AND INDEX NO.	PART NUMBER	DESCRIPTION	UNITS PER ASSY	USABLE ON CODE
34B-		1 2 3 4 5 6 7 NOSE GEAR WHEEL & TIRE ASSY -----	NP	A
- 1	C262003-0102	TIRE-BLACKWALL 5.00X5 4 PLY RATED -----	1	
- 2	C262023-0101	TUBE 5.00X5 -----	1	
	C163003-0401 *	WHEEL ASSY -----	NP	
- 3	C30481	HUB ASSY MCL -----	1	
- 4	A30078-1	CUP-BEARING MCL -----	2	
- 5	B30077	SPACER MCL -----	2	
- 6	C30484	FLANGE-WHEEL MCL -----	1	
- 7	C30484-1	FLANGE-WHEEL MCL -----	1	
- 8	A30078-2	CONE-BEARING MCL -----	2	
- 9	A30048	RETAINER-GREASE SEAL MCL -----	4	
-10	A30047	GREASE SEAL-FELT MCL -----	2	
-11	A1636-23	RING-RETAINER -----	2	
-12	A1635-73	SCREW MCL -----	12	
-13	AN960-516	WASHER -----	12	
<p>NOTE. *WHEN ORDERING COMPLETE WHEEL ASSY ORDER C163005-0201 SEE FIG 34C.</p> <p>A---150 SERIAL 15077814 THRU 15078321 F150 SERIAL F15001301 THRU F15001306, F15001308, F15001309, F15001311 THRU F15001314, F15001316 THRU F15001319, F15001321 THRU F15001338 A150 SERIAL A1500654 THRU A1500672 FA150 SERIAL FA1500301 THRU FA1500311</p>				

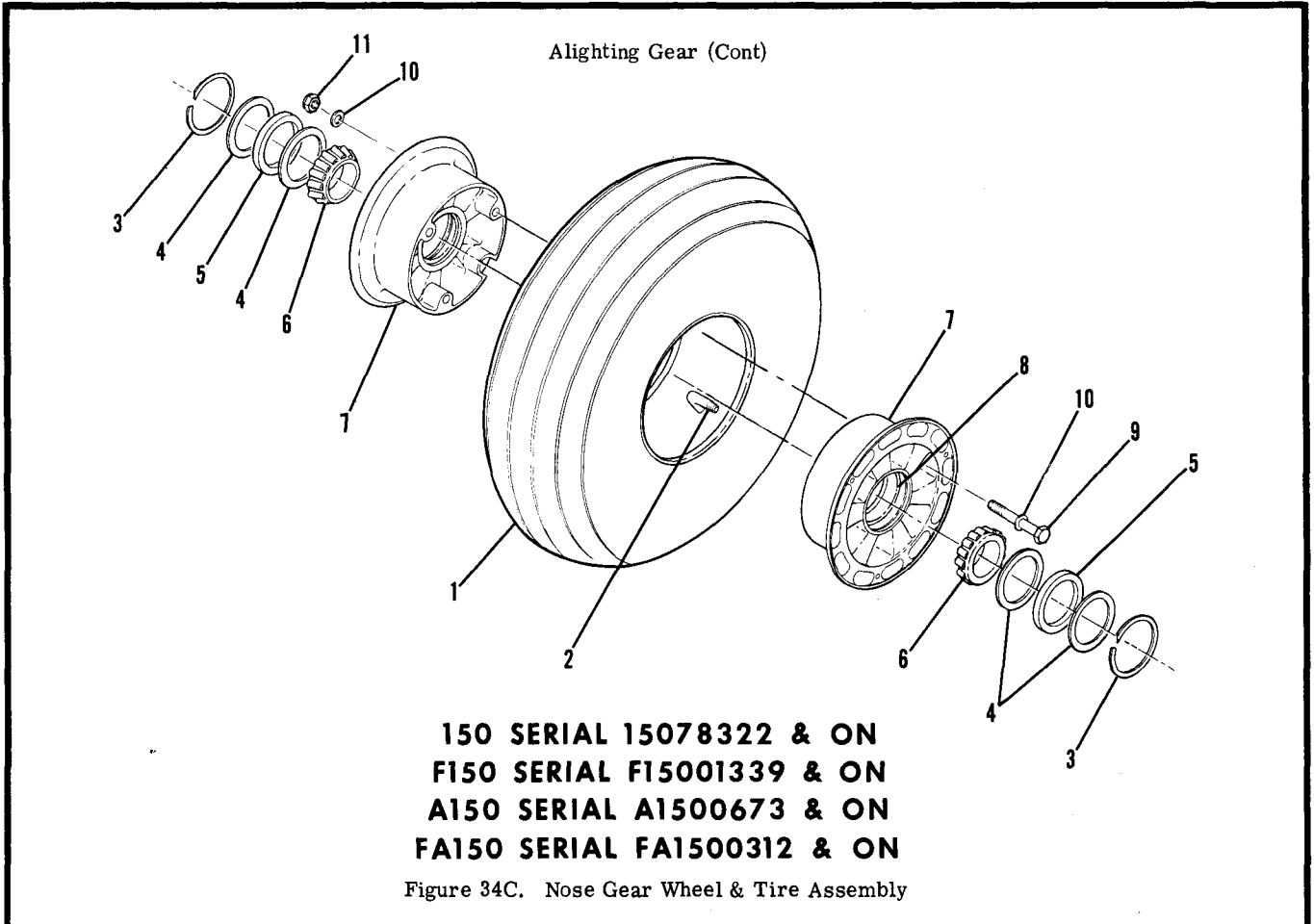


FIGURE AND INDEX NO.	PART NUMBER	DESCRIPTION	UNITS PER ASSY	USABLE ON CODE
		1 2 3 4 5 6 7		
34C-		NOSE GEAR WHEEL & TIRE ASSY -----	NP	A
- 1	C262003-0102	TIRE-BLACKWALL 5.00X5 4 PLY RATED -----	1	
- 2	C262023-0101	TUBE 5.00X5 -----	1	
	C163005-0201	WHEEL ASSY -----	1	
- 3	A1636-23	RING-RETAINING MCL -----	2	
- 4	A30048	RING-GREASE SEAL MCL -----	4	
- 5	A30047	GREASE SEAL-FELT MCL -----	2	
- 6	A30078-2	BEARING MCL -----	2	
- 7	C30598	WHEEL HALF ASSY MCL -----	2	
- 8	A30078-1	CUP-BEARING MCL -----	1	
- 9	AN5-22A	BOLT -----	3	
-10	AN960-516	WASHER -----	6	
-11	AN365-524A	NUT -----	3	
A---150 SERIAL 15078322 & ON F150 SERIAL F15001339 & ON A150 SERIAL A1500673 & ON FA150 SERIAL FA1500312 & ON				

Alighting Gear (Cont)

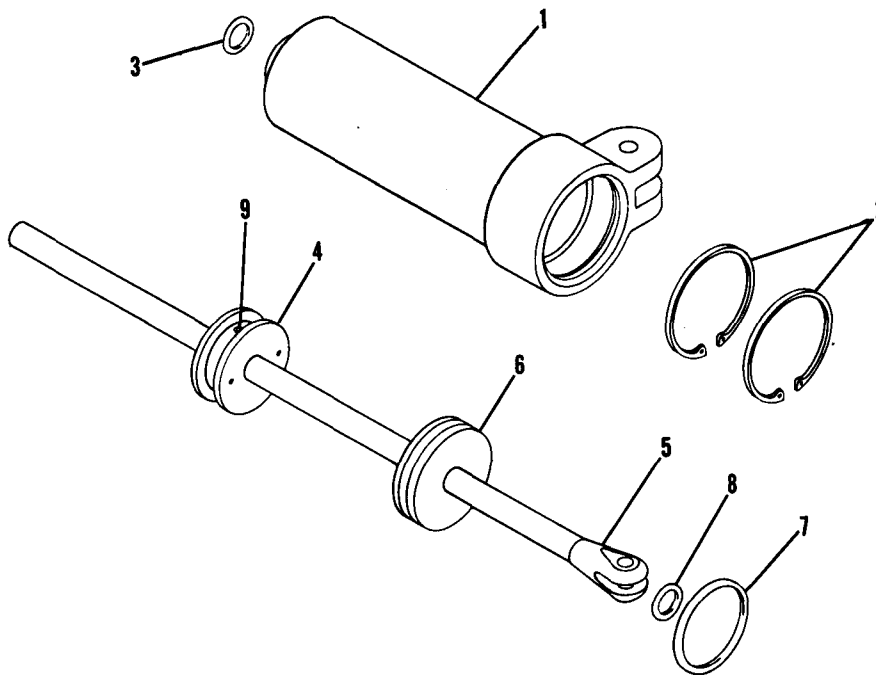


Figure 35. Shimmy Dampener Assembly

FIGURE AND INDEX NO.	PART NUMBER	DESCRIPTION	UNITS PER ASSY	USABLE ON CODE
		1 2 3 4 5 6 7		
35 -	0442512-1	DAMPENER ASSEMBLY-SHIMMY -----	1	
- 1	0542100-6	BARREL-SHIMMY DAMPENER -----	1	
- 2	MS16625-118	RING-RETAINING -----	2	
- 3	AN622786	O RING -----	1	
- 4	0542118-5	PISTON ASSY-SHIMMY DAMPENER -----	1	
- 5	0542101-1	SHAFT ASSEMBLY -----	1	
- 6	0542102-3	HEAD BEARING -----	1	
- 7	AN6227818	O RING -----	1	
- 8	AN622786	O RING -----	1	
- 9	NAS561P4-14	ROLL PIN -----	1	



FIGURE AND INDEX NO.	PART NUMBER	DESCRIPTION	UNITS PER ASSY	USABLE ON CODE
36 -		MAIN LANDING GEAR INSTALLATION -----	NP	A
- 1	0441025-1	SEAL -----	2	
- 2	0441024-1	PLATE-LANDING GEAR FILLET LH -----	1	
	0441024-2	PLATE-LANDING GEAR FILLET RH -----	1	
		ATTACHING PARTS -----		
- 3	S1021Z8-8	SCREW -----	6	
		-----*		
		MAIN LANDING GEAR ASSEMBLY-LH -----	NP	
		MAIN LANDING GEAR ASSEMBLY-RH -----	NP	
		ATTACHING PARTS -----		
- 4	AN6-16A	BOLT -----	1	
- 5	0541105	SHIM -----	AR	
- 5A	NAS680A6	NUTPLATE -----	1	
- 6	0441023-2	WEDGE .100 -----	2	
	0741022-1	SHIM -----	AR	
	NAS564-45	BOLT -----	2	
		-----*		
- 7	0441186-1	SPRING ASSEMBLY-LANDING GEAR LH -----	1	
	0441186-2	SPRING ASSEMBLY-LANDING GEAR RH -----	1	
	0441169	STEP BRACKET LH -----		
	0441169-2	STEP BRACKET RH -----	1	
- 8	1441001-3	CLIP-BRAKE LINE -----	1	
- 9	0400311-99	LINE-BRAKE LH & RH -----	1	
		ATTACHING PARTS -----		
-10	MS21919DG3	CLAMP -----	1	
-11	NAS220-6	SCREW -----	1	
	MS21044N08	NUT -----	1	
-12	AN833-3D	ELBOW -----	1	
-13	0441119	HOSE -----	1	
		-----*		
-14	S1810-1075	HOSE ASSEMBLY -----	1	
-15	AN914-1D	ELBOW -----	1	
-16	0541124	AXLE-MAIN LANDING GEAR -----	1	
		ATTACHING PARTS -----		
-17	AN5-21A	BOLT -----	2	
	AN5-22A	BOLT ALTERNATE -----	2	
	AN6-22A	BOLT -----	2	
	AN6-23A	BOLT ALTERNATE -----	2	
-18	AN960-516L	WASHER -----	AR	
	AN960-616L	WASHER -----	AR	
-19	MS21042L5	NUT -----	2	
	MS21042L6	NUT -----	2	
-20	0441139-5	SHIM-1 DEGREE CORRECTION -----	AR	
	0441139-6	SHIM-2 DEGREE CORRECTION -----	AR	
	0541111-2	SHIM -----	AR	
	0541157-1	SHIM -----	AR	
	0541157-2	SHIM -----	AR	
	0541157-3	SHIM -----	AR	
	1241061-1	SHIM -----	AR	
		-----*		
-21	S1117-24	NUT -----	1	
-22	MS24665-351	PIN-COTTER -----	1	
-23	0541154-1	STEP-CABIN ENTRANCE -----	1	
		ATTACHING PARTS -----		
-24	AN507-1032R10	SCREW -----	1	
-25	NAS221-9	SCREW -----	2	
-26	MS21044N3	NUT -----	3	
		-----*		
-27	0541156-1	STRAP-BRAKE LINE LH -----	1	
	0541156-2	STRAP-BRAKE LINE RH -----	1	
-28	0741048-8	CAP-MAIN GEAR HUB -----	1	
		ATTACHING PARTS -----		
	AN515-8R4	SCREW -----	3	
	AN936A8	WASHER -----	3	
		-----*		
	6241M	EXTENSION-VALVE DL -----	1	
	3680C	EXTENSION-VALVE ALTERNATE SV -----	1	
	SEE FIG 37	WHEEL & BRAKE ASSEMBLY-MAIN GEAR -----	1	

CONTINUED ON NEXT PAGE

FIGURE AND INDEX NO.	PART NUMBER	DESCRIPTION	UNITS PER ASSY	USABLE ON CODE
36 -		SPEED FAIRING INSTALLATION -----	NP	
-29	0441201-1	PLATE ASSEMBLY-LH -----	1	
	0441201-2	PLATE ASSEMBLY-RH -----	1	
-30	NAS680A3K	NUTPLATE -----	3	
-31	NAS686A3	NUTPLATE -----	4	
-32	0741046-203	FAIRING ASSEMBLY-LH -----	1	
	0741046-202	FAIRING ASSEMBLY-RH -----	1	
		ATTACHING PARTS		
-33	AN520-10R5	SCREW -----	3	
-34	AN520-10R8	SCREW -----	4	
-35	AN6-6A	BOLT -----	1	
-36	AN936B616	WASHER -----	1	
-37	AN960-616L	WASHER -----	1	
		-----*		
-38	0741046-11	DOUBLER -----	1	
-39	0741046-14	SCRAPER-FAIRING -----	1	
		ATTACHING PARTS		
-40	AN520-10R10	SCREW -----	3	
	AN960-10	WASHER -----	3	
	MS21044N3	NUT -----	3	
		-----*		
-41	0741047-1	NUT -----	1	
	MS24665-362	PIN-COTTER -----	1	
-42	6241M	EXTENSION-VALVE DL -----	1	
	3680C	EXTENSION-VALVE ALTERNATE SV -----	1	
-43	0741048-7	CAP-WHEEL -----	1	
		ATTACHING PARTS		
-44	AN515-8R4	SCREW -----	3	
	AN936A8	WASHER -----	3	
		-----*		
		A---150 SERIAL 15071129 THRU 15072003		
		F150 SERIAL F15000530 THRU F15000658		
		A150 SERIAL A1500001 THRU A1500226		
		FA150 SERIAL FA1500001 THRU FA1500081		



FIGURE AND INDEX NO.	PART NUMBER	DESCRIPTION	UNITS PER ASSY	USABLE ON CODE		
					1	2
36A-		MAIN LANDING GEAR INSTALLATION	NP	A		
- 1	0441212-1	SPRING ASSEMBLY-LANDING GEAR LH WEU 0441212-5	1	L		
	0441212-2	SPRING ASSEMBLY-LANDING GEAR RH WEU 0441212-6	1	L		
	0441212-5	SPRING ASSEMBLY-LANDING GEAR LH	1	M		
	0441212-6	SPRING ASSEMBLY-LANDING GEAR RH	1	M		
		ATTACHING PARTS				
- 2	0441221-1	BOLT	1			
	AN960-516L	WASHER	2			
- 3	MS20365-524	NUT	1			
		-----*-----				
- 3A	0441214-7	BRACKET ASSY-STEP LH	1			
	0441214-8	BRACKET ASSY-STEP RH	1			
- 4	0441224-1	BUSHING	2			
- 5	MS16624-1206	SNAP RING	4			
- 6	AN833-30	ELBOW	2			
- 7	0400311-107	LINE ASSEMBLY-BRAKE LH INSTALLED AFT OF GEAR	1	D		
		WEU 0400311-109				
	0400311-109	LINE ASSEMBLY-BRAKE LH INSTALLED FWD OF GEAR	1	E		
	0400311-106	LINE ASSEMBLY-BRAKE RH INSTALLED AFT OF GEAR	1	D		
		WEU 0400311-108				
	0400311-108	LINE ASSEMBLY-BRAKE RH INSTALLED FWD OF GEAR	1	E		
		ATTACHING PARTS				
- 8	MS21919DG3	CLAMP USED WITH 0430011-106 & -107 LINES	1	D		
	AN735D24	CLAMP USED WITH 0400311-108 & -109 LINES	1	E		
	S1071-3	TUBE-1.0 IN LG BKI REF S1071-3-1.0	1	E		
- 9	NAS220-6	SCREW	1	D		
	NAS221-6	SCREW	1	E		
-10	MS21044N08	NUT	1	D		
	MS21044N3	NUT	1	E		
		-----*-----				
-11	0541154-1	STEP-CABIN ENTRANCE WEU 0541211-1	2	B		
	0541154-2	STEP-CABIN ENTRANCE WEU 0541211-1	2	C		
	0541211-1	STEP-CABIN ENTRANCE	2	K		
		ATTACHING PARTS				
-12	AN507-1032R10	SCREW	1			
-13	NAS221-9	SCREW	2			
-14	MS21044N3	NUT	3			
		-----*-----				
-15	0441203-1	AXLE-MAIN LANDING GEAR	2			
		ATTACHING PARTS				
-16	0441221-1	BOLT	1			
	AN960-516L	WASHER	2			
-17	MS20365-524	NUT	1			
		-----*-----				
-18	MS20822-30	ELBOW	2			
-19	SEE FIG 37A	BRAKE ASSEMBLY	2			
	SEE FIG 37B	BRAKE ASSEMBLY ALTERNATE	2			
		ATTACHING PARTS				
-20	AN5-12A	BOLT UPPER	2			
	AN6-13A	BOLT LOWER	2			
-21	AN960-516L	WASHER UPPER	2			
	AN960-616L	WASHER LOWER	2			
-22	MS21042L5	NUT UPPER	2			
	MS21042L6	NUT LOWER	2			
		-----*-----				
-23	SEE FIG 37A	WHEEL & TIRE ASSEMBLY	NP			
	SEE FIG 37B	WHEEL & TIRE ASSEMBLY ALTERNATE	NP			
-24	S1117-24	NUT	2			
-25	MS24665-351	PIN-COTTER	2			
-26	0741048-8	CAP-MAIN GEAR HUB	2			
		ATTACHING PARTS				
-27	AN515-8R4	SCREW USE WITH C163001-0103, C163002-0101 & C163001-0104 WHEEL ASSEMBLIES	3			
	S2191-8-4	SCREW USE WITH C163003-0101 WHEEL ASSY	3			
-28	AN936A8	WASHER	3			
		-----*-----				
-29	6241M	EXTENSION-VALVE DL	2			
	3680C	EXTENSION-VALVE ALTERNATE SV	2			
-30	AN735D18	CLAMP	2			
		ATTACHING PARTS				
-31	NAS221-6	SCREW	1			
-32	MS21044N3	NUT	1			
		-----*-----				

CONTINUED ON NEXT PAGE

FIGURE AND INDEX NO.	PART NUMBER	DESCRIPTION	UNITS PER ASSY							USABLE ON CODE
			1	2	3	4	5	6	7	
36A-33	0441218-1	COVER PLATE-MAIN GEAR SPRING FAIRING LH							1	
	0441218-2	COVER PLATE-MAIN GEAR SPRING FAIRING RH							1	
-34	AN515-6R6	ATTACHING PARTS SCREW							2	
-35	0441216-1	FAIRING ASSEMBLY-MAIN GEAR SPRING LH WEU 0441216-5							1	H
	0441216-5	FAIRING ASSEMBLY-MAIN GEAR SPRING LH							1	J
	0441216-2	FAIRING ASSEMBLY-MAIN GEAR SPRING RH WEU 0441216-6							1	H
	0441216-6	FAIRING ASSEMBLY-MAIN GEAR SPRING RH							1	J
-36	S1021Z8-6	ATTACHING PARTS SCREW							9	H
	AN515-8R6	SCREW							9	J
-37	NAS395-14-3	NUT							9	H
	NAS680A08	NUTPLATE							9	J
	NAS696A06L	NUTPLATE							2	
	0441217-3	FAIRING ASSEMBLY-MAIN GEAR LH WEU 0441217-11							1	H
	0441217-11	FAIRING ASSEMBLY-MAIN GEAR LH WEU 0441217-215							1	N
	0441217-215	FAIRING ASSEMBLY-MAIN GEAR LH VESTAL WHITE ONLY							1	P
	0441217-19	FAIRING ASSEMBLY-MAIN GEAR LH USED ON AIRCRAFT							1	S
	0441217-4	REQUIRING PAINTED COLOR OTHER THAN VESTAL WHITE FAIRING ASSEMBLY-MAIN GEAR RH WEU 0441217-12							1	H
	0441217-12	FAIRING ASSEMBLY-MAIN GEAR RH WEU 0441217-214							1	N
	0441217-214	FAIRING ASSEMBLY-MAIN GEAR RH VESTAL WHITE ONLY							1	P
0441217-18	FAIRING ASSEMBLY-MAIN GEAR RH USED ON AIRCRAFT							1	S	
-38	S1021Z6-4	ATTACHING PARTS SCREW							2	H
	AN515-6R4	SCREW							2	J
-39	AN515-8R12	SCREW							7	
-40	S1613-08-75	RIVNUT							7	
-41	S1863-2A	NUTPLATE							2	H
-42	NAS680A06	NUTPLATE							2	J
	0441201-5	PLATE ASSEMBLY-MAIN GEAR WHEEL FAIRING LH							1	Q
-43	0441225-1	PLATE ASSEMBLY-MAIN GEAR WHEEL FAIRING LH							1	R
	0441201-6	PLATE ASSEMBLY-MAIN GEAR WHEEL FAIRING RH							1	Q
	0441225-2	PLATE ASSEMBLY-MAIN GEAR WHEEL FAIRING RH							1	R
-44	NAS680A3K	NUTPLATE							3	
-44A	NAS686A3	NUTPLATE							4	
-45	0441220-1	STIFFENER-WHEEL FAIRING LH							1	Q
	0441226-1	STIFFENER-WHEEL FAIRING LH							1	R
	0441220-2	STIFFENER-WHEEL FAIRING RH							1	Q
	0441226-2	STIFFENER-WHEEL FAIRING RH							1	R
	0541203-1	FAIRING ASSEMBLY-MAIN GEAR WHEEL LH							1	Q
-46	0541223-1	FAIRING ASSEMBLY-MAIN GEAR WHEEL LH							1	R
	0541203-2	FAIRING ASSEMBLY-MAIN GEAR WHEEL RH							1	Q
	0541223-2	FAIRING ASSEMBLY-MAIN GEAR WHEEL RH							1	R
-46A	AN525-10R10	ATTACHING PARTS SCREW							3	Q
	AN525-10R10	SCREW							7	R
-46B	AN525-10R12	SCREW							4	Q
-47	S1450-3D9-032	WASHER							7	
-48	AN6-6A	BOLT							1	
-49	AN9368616	WASHER							1	F
-49A	AN960-616L	WASHER							1	
	AN960-616	WASHER							2	
-50	0541207-1	DOUBLER							1	Q
	0541222-1	DOUBLER							1	R
-51	0541206-1	DOUBLER							1	Q
	0541219-1	DOUBLER-LH							1	R
-52	0541219-2	DOUBLER-RH							1	R
	0541205-1	SCRAPER							1	Q
	0541221-1	SCRAPER							1	R
-53	AN520-10R16	ATTACHING PARTS SCREW							3	Q
	AN520-10R12	SCREW							3	R
	AN960-10	WASHER							6	
	MS21044N3	NUT							3	
-53A	0541223-13	DOOR ASSEMBLY-WHEEL FAIRING ACCESS							1	R
-53B	KM610-64	LATCH-WHEEL FAIRING DOOR							1	R

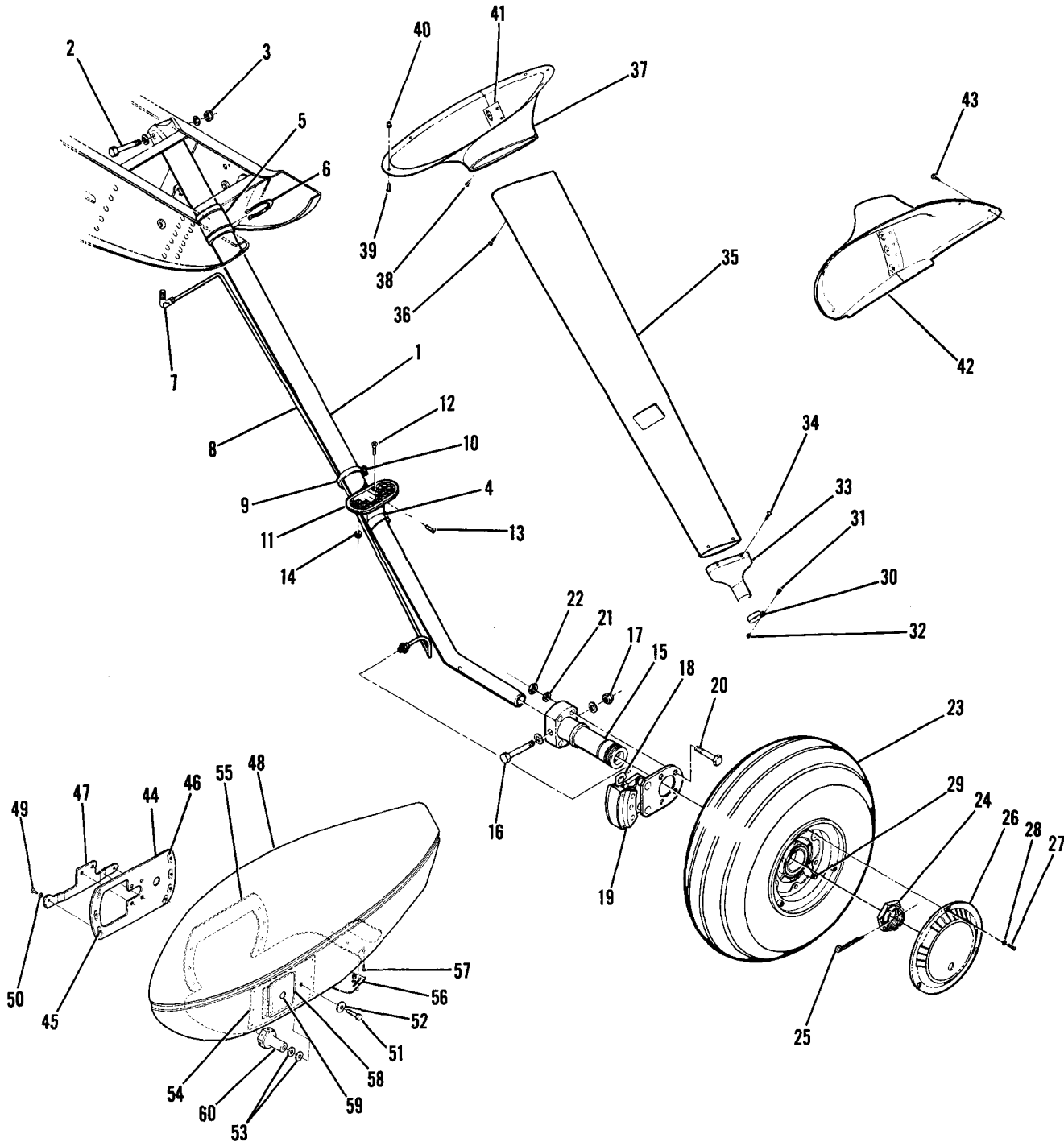
CONTINUED ON NEXT PAGE

FIGURE AND INDEX NO.	PART NUMBER	DESCRIPTION	UNITS PER ASSY	USABLE ON CODE
36A-54	0741047-1	NUT WEU 0741047-2 -----	2	F
	0741047-2	NUT -----	2	G
-55	MS24665-362	PIN-COTTER -----	2	
	0741048-7	CAP-WHEEL -----	2	Q
		ATTACHING PARTS		
	AN515-8R4	SCREW -----	3	Q
	AN936A8	WASHER -----	3	Q
		---*---		
		A---150 SERIAL 15072004 THRU 15075781 F150 SERIAL F15000659 THRU F15001143 A150 SERIAL A1500227 THRU A1500523 FA150 SERIAL FA1500082 THRU FA1500261		
		B---150 SERIAL 15072004 THRU 15072434 F150 SERIAL F15000659 THRU F15000738 A150 SERIAL A1500227 THRU A1500257 FA150 SERIAL FA1500082 THRU FA1500161		
		C---150 SERIAL 15072435 THRU 15073181 F150 SERIAL F15000739 THRU F15000818 A150 SERIAL A15000258 THRU A1500320		
		D---150 SERIAL 15072004 THRU 15072546 F150 SERIAL F15000659 THRU F15000738 A150 SERIAL A1500227 THRU A1500265 FA150 SERIAL FA1500082 THRU FA1500161		
		E---150 SERIAL 15072547 THRU 15075781 F150 SERIAL F15000739 THRU F1500143 A150 SERIAL A1500266 THRU A1500523 FA150 SERIAL FA1500162 THRU FA1500261		
		F---150 SERIAL 15072004 THRU 15073146 F150 SERIAL F15000659 THRU F15000863 A150 SERIAL A1500227 THRU A1500318 FA150 SERIAL FA1500082 THRU FA1500166		
		G---150 SERIAL 15073147 THRU 15075781 F150 SERIAL F15000864 THRU F15001143 A150 SERIAL A1500319 THRU A1500523 FA150 SERIAL FA1500167 THRU FA1500261		
		H---150 SERIAL 15072004 THRU 15073084 F150 SERIAL F15000659 THRU F15000818 A150 SERIAL A1500227 THRU A1500312 FA150 SERIAL FA1500082 THRU FA1500161		
		J---150 SERIAL 15073085 THRU 15075781 F150 SERIAL F15000819 THRU F15001143 A150 SERIAL A1500313 THRU A1500523 FA150 SERIAL FA1500162 THRU FA1500261		
		K---150 SERIAL 15073182 THRU 15075781 F150 SERIAL F15000819 THRU F15001143 A150 SERIAL A1500321 THRU A1500523 FA150 SERIAL FA1500162 THRU FA1500261		
		L---150 SERIAL 15072004 THRU 15073284 F150 SERIAL F15000659 THRU F15000833 A150 SERIAL A1500227 THRU A1500334 FA150 SERIAL FA1500082 THRU FA1500166		
		M---150 SERIAL 15073285 THRU 15075781 F150 SERIAL F15000834 THRU F15001143 A150 SERIAL A1500325 THRU A1500523 FA150 SERIAL FA1500167 THRU FA1500261		
		N---150 SERIAL 15073085 THRU 15074816 F150 SERIAL F15000819 THRU F1501073 A150 SERIAL A1500313 THRU A1500430 FA150 SERIAL FA1500162 THRU FA1500236		
		P---150 SERIAL 15074817 THRU 15075781 F150 SERIAL F1501074 THRU F15001143 A150 SERIAL A1500431 THRU A1500523 FA150 SERIAL FA1500236 THRU FA1500261		
		Q---150 SERIAL 15072004 THRU 15074850 F150 SERIAL F15000659 THRU F15001013 A150 SERIAL A1500227 THRU A1500429 FA150 SERIAL FA1500082 THRU FA1500211		
		R---150 SERIAL 15074851 THRU 15075781 F150 SERIAL F15001014 THRU F15001143 A150 SERIAL A1500430 THRU A1500523 FA150 SERIAL FA1500212 THRU FA1500261		
		S---150 SERIAL 15073659 THRU 15075781		

FIGURE AND INDEX NO.	PART NUMBER	DESCRIPTION	UNITS PER ASSY	USABLE ON CODE
368-		1 2 3 4 5 6 7		
- 1	0441212-5 0441212-6	MAIN LANDING GEAR INSTALLATION ----- SPRING ASSY-LANDING GEAR LH ----- SPRING ASSY-LANDING GEAR RH ----- ATTACHING PARTS	NP 1 1	A
- 2	0441221-1	BOLT -----	1	
	AN960-516L	WASHER -----	2	
- 3	MS20365-524	NUT ----- -----*	1	
- 4	0441214-7	BRACKET ASSY-STEP LH -----	1	
	0441214-8	BRACKET ASSY-STEP RH -----	1	
- 5	0441224-1	BUSHING -----	2	
- 6	MS16624-1206	SNAP RING -----	2	
- 7	AN833-3D	ELBOW -----	2	
- 8	0400311-109	LINE ASSY-BRAKE LH -----	1	
	0400311-108	LINE ASSY-BRAKE RH ----- ATTACHING PARTS	1	
- 9	AN735D24	CLAMP -----	1	
	S1071-3	TUBE-1.0 IN LG BKI -----	1	
-10	NAS221-6	SCREW -----	1	
	MS21044N3	NUT ----- -----*	1	
-11	0541211-1	STEP-CABIN ENTRANCE ----- ATTACHING PARTS	2	
-12	AN507-1032R10	SCREW -----	1	
-13	NAS221-9	SCREW -----	2	
-14	MS21044N3	NUT ----- -----*	3	
-15	0441203-1	AXLE-MAIN LANDING GEAR ----- ATTACHING PARTS	2	
-16	0441221-1	BOLT -----	1	
	AN960-516L	WASHER -----	2	
-17	MS20365-524	NUT ----- -----*	1	
-18	MS20822-3D	ELBOW -----	2	
-19	SEE FIG 37A	BRAKE ASSY -----	2	
	SEE FIG 37B	BRAKE ASSY ALTERNATE ----- ATTACHING PARTS	2	
-20	AN5-12A	BOLT UPPER -----	2	
	AN6-13A	BOLT LOWER -----	2	
-21	AN960-516L	WASHER UPPER -----	2	
	AN960-616L	WASHER LOWER -----	2	
-22	MS21042L5	NUT UPPER -----	2	
	MS21042L6	NUT LOWER ----- -----*	2	
-23	SEE FIG 37A	WHEEL & TIRE ASSY -----	NP	
	SEE FIG 37B	WHEEL & TIRE ASSY ALTERNATE -----	NP	
-24	S1117-24	NUT -----	2	
-25	MS24665-351	PIN-COTTER -----	2	
-26	0741048-8	CAP-MAIN GEAR HUB ----- ATTACHING PARTS	2	
-27	S2191-8-4	SCREW USE WITH C163003-0101 WHEEL ASSY -----	3	
	AN515-8R4	SCREW USE WITH C163001-0104 WHEEL ASSY -----	3	
-28	AN936A8	WASHER ----- -----*	3	
-29	624M	EXTENSION-VALVE DL -----	2	
	3680C	EXTENSION-VALVE ALTERNATE SV -----	2	
-30	AN735D18	CLAMP ----- ATTACHING PARTS	2	
-31	NAS221-6	SCREW -----	1	
-32	MS21044N3	NUT ----- -----*	1	

CONTINUED ON NEXT PAGE

Alighting Gear (Cont)



150 SERIAL 15075782 & ON
F150 SERIAL F15001144 & ON
A150 SERIAL A1500524 & ON
FA150 SERIAL FA1500262 & ON

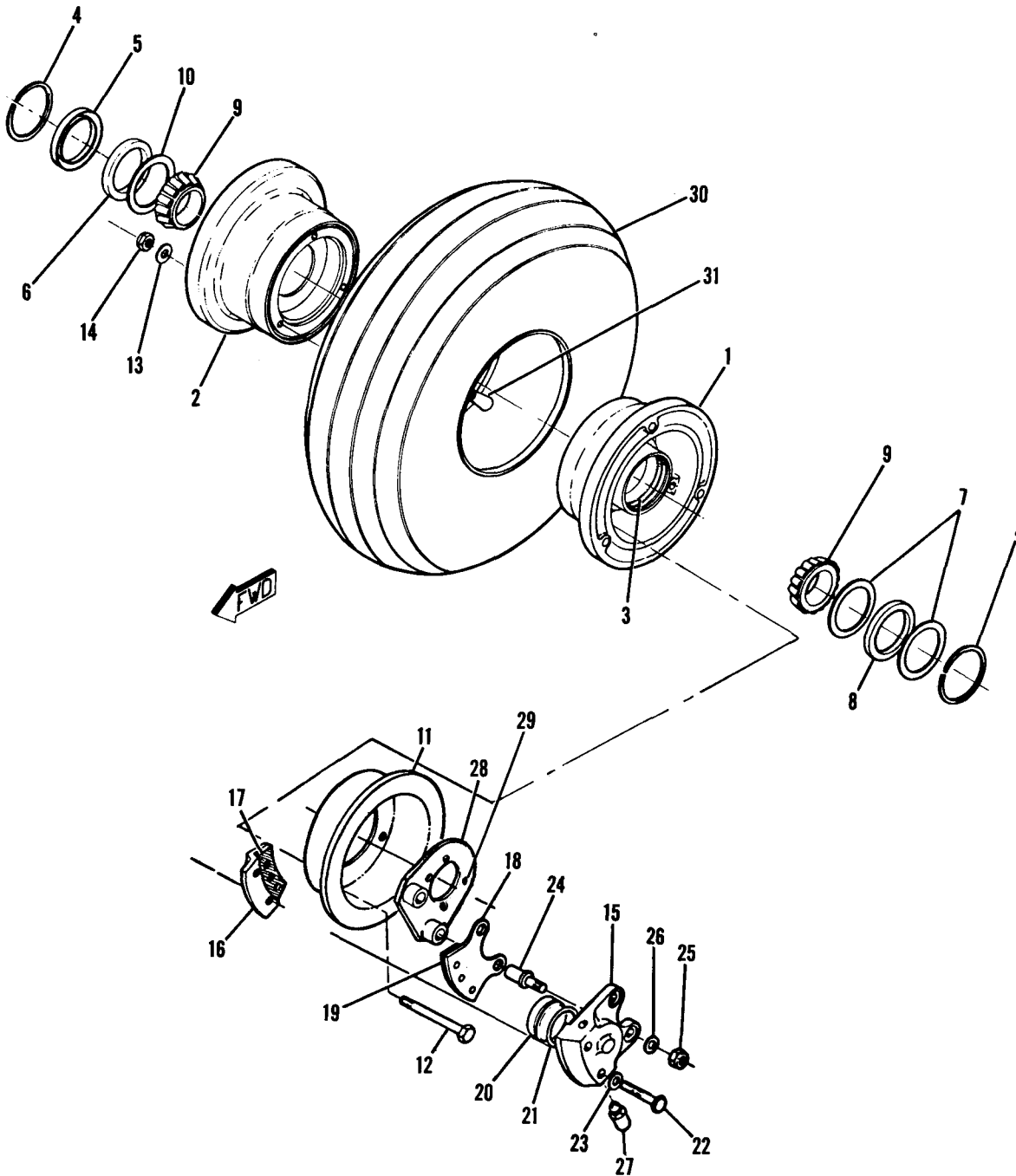
Figure 36B. Main Landing Gear Installation



FIGURE AND INDEX NO.	PART NUMBER	DESCRIPTION	UNITS PER ASSY	USABLE ON CODE
36B-33	0441218-1	COVER PLATE-MAIN GEAR SPRING FAIRING LH -----	1	
	0441218-2	COVER PLATE-MAIN GEAR SPRING FAIRING RH -----	1	
-34	AN515-6R6	ATTACHING PARTS -----		
		SCREW -----	2	
-35	0441216-5	FAIRING ASSY-MAIN GEAR SPRING LH -----	1	
	0441216-6	FAIRING ASSY-MAIN GEAR SPRING RH -----	1	
-36	AN515-8R6	ATTACHING PARTS -----		
		SCREW -----	9	
-37	NAS680A08	NUTPLATE -----	9	
	NAS696A06L	NUTPLATE -----	2	
	0441217-215	FAIRING ASSY-MAIN GEAR LH VESTAL WHITE ONLY -----	1	
	0441217-19	FAIRING ASSY-MAIN GEAR LH USED ON AIRCRAFT REQUIRING PAINTED COLOR OTHER THAN VESTAL WHITE -----	1	B
	0441217-214	FAIRING ASSY-MAIN GEAR RH VESTAL WHITE ONLY -----	1	
	0441217-18	FAIRING ASSY-MAIN GEAR RH USED ON AIRCRAFT REQUIRING PAINTED COLOR OTHER THAN VESTAL WHITE -----	1	B
-38	AN515-6R4	ATTACHING PARTS -----		
-39	AN515-8R12	SCREW -----	2	
-40	S1613-08-75	SCREW -----	7	
-41	NAS680A06	RIVNUT -----	7	
-42	0441227-1	ATTACHING PARTS -----		
	0441227-2	NUTPLATE -----	2	
-43	AN525-832R10	FAIRING ASSY-BRAKE LH -----	1	
	S102126-6	FAIRING ASSY-BRAKE RH -----	1	
-44	0441225-1	ATTACHING PARTS -----		
-45	0441225-2	SCREW -----	6	
-46	NAS680A3K	SCREW -----	3	
-47	NAS686A3	PLATE ASSY-MAIN GEAR WHEEL FAIRING LH -----	1	
-48	0441226-1	PLATE ASSY-MAIN GEAR WHEEL FAIRING RH -----	1	
-49	0441226-2	NUTPLATE -----	3	
-50	0541223-17	NUTPLATE -----	4	
-51	0541223-16	STIFFENER-WHEEL FAIRING LH -----	1	
-52	AN525-10R10	STIFFENER-WHEEL FAIRING RH -----	1	
-53	S1450-3D9-032	FAIRING ASSY-MAIN GEAR WHEEL LH -----	1	
-54	AN6-6A	FAIRING ASSY-MAIN GEAR WHEEL RH -----	1	
-55	AN960-616L	ATTACHING PARTS -----		
-56	AN960-616	SCREW -----	7	
-57	0541222-1	WASHER -----	7	
-58	0541219-1	BOLT -----	1	
-59	0541219-2	WASHER -----	1	
-60	0541221-1	WASHER -----	1	
-61	AN520-10R12	WASHER -----	2	
-62	AN960-10	SCREW -----	3	
-63	MS21044N3	WASHER -----	6	
-64	0541223-13	NUT -----	3	
-65	KM610-64	DOUBLER -----	1	
-66	NAS680A08	DOUBLER-LH -----	1	
-67	0741047-2	DOUBLER-RH -----	1	
-68	MS24665-362	SCRAPER -----	1	
-69		ATTACHING PARTS -----		
-70		SCREW -----	3	
-71		WASHER -----	6	
-72		NUT -----	3	
-73		DOOR ASSY-WHEEL FAIRING ACCESS -----	1	
-74		LATCH-WHEEL FAIRING DOOR -----	1	
-75		NUTPLATE ATTACH BRAKE FAIRING -----	6	
-76		NUT -----	2	
-77		PIN-COTTER -----	2	

A---150 SERIAL 15075782 & ON
 F150 SERIAL F1500144 & ON
 A150 SERIAL A1500524 & ON
 FA150 SERIAL FA1500262 & ON
 B---150 SERIAL 15075782 & ON

Alighting Gear (Cont)

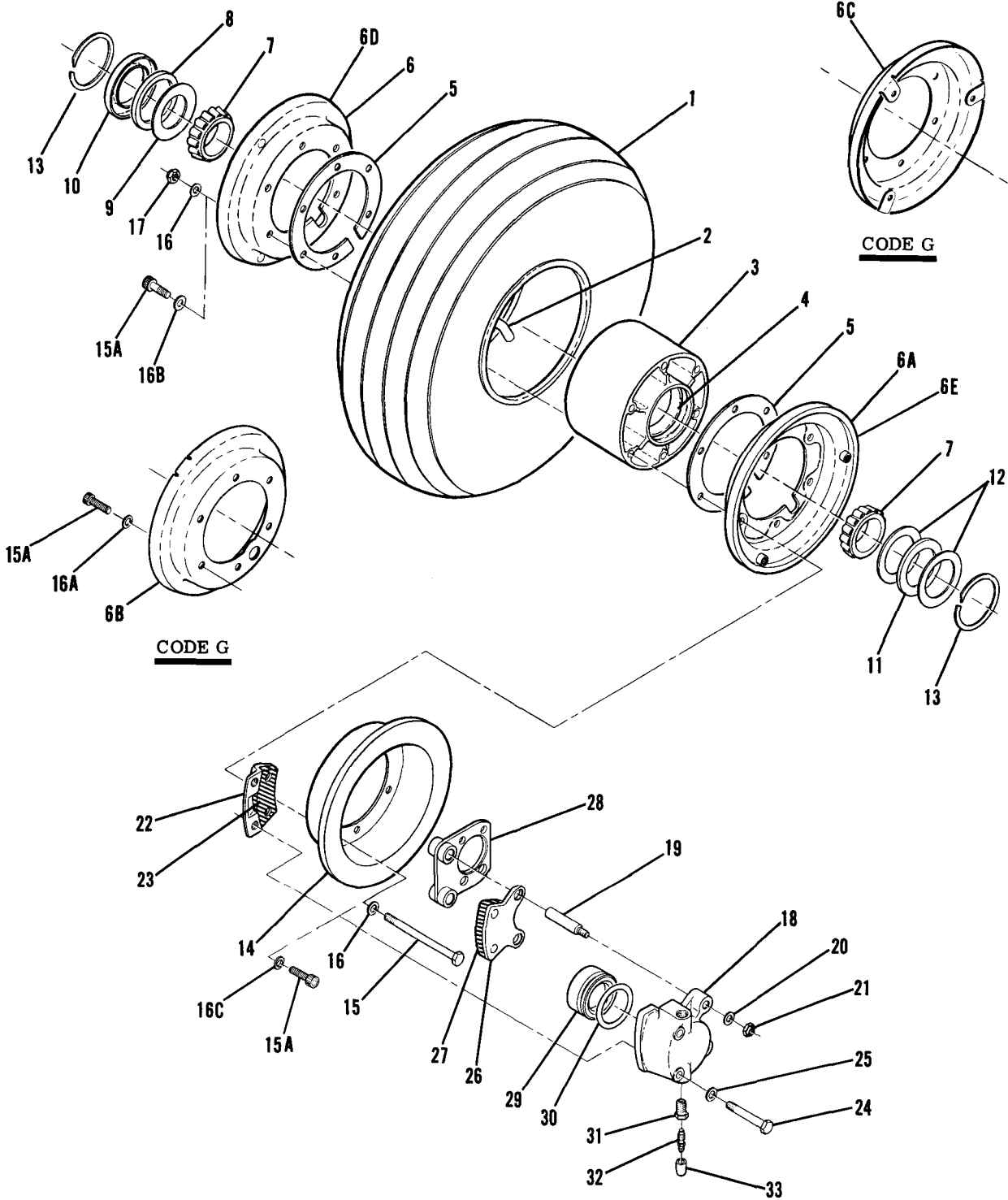


150 SERIAL 15071129 THRU 15072003
F150 SERIAL F15000530 THRU F15000658
A150 SERIAL A1500001 THRU A1500226
FA150 SERIAL FA1500001 THRU FA1500081

Figure 37. Main Gear Wheel & Brake Assembly

FIGURE AND INDEX NO.	PART NUMBER	DESCRIPTION	UNITS PER ASSY	USABLE ON CODE
		1 2 3 4 5 6 7		
37 -	C163001-0103	WHEEL & BRAKE ASSEMBLY-MAIN LANDING GEAR -----	NP	A
- 1	161-03000	WHEEL ASSEMBLY-MAIN GEAR CFP 40-97A -----	1	
- 2	162-02700	WHEEL HALF ASSEMBLY-MALE CFP -----	1	
- 3	214-00100	WHEEL HALF ASSEMBLY-FEMALE CFP -----	1	
- 4	155-00100	CUP-BEARING CFP -----	1	
- 5	153-01500	SNAP RING CFP -----	1	
- 6	154-01300	RING-GREASE SEAL CFP -----	1	
- 7	153-00400	FELT-GREASE SEAL CFP -----	1	
- 8	154-00300	RING-GREASE SEAL CFP -----	2	
- 9	214-00200	FELT-GREASE SEAL CFP -----	1	
-10	153-00300	CONE-BEARING CFP -----	2	
-11	164-02601	RING-GREASE SEAL CFP -----	1	
-12	AN5-35A	DISC ASSEMBLY-BRAKE CFP -----	1	
-13	AN960-516	BOLT -----	3	
-14	AN365-524	WASHER -----	3	
	C163030-0107 *	NUT -----	3	
	091-02200	BRAKE ASSY-MAIN GEAR CFP 30-63 -----	1	
-15	061-01900	CYLINDER ASSY-BRAKE CFP -----	1	
-16	074-01000	CYLINDER CFP -----	1	
-17	066-03000	BACK PLATE ASSEMBLY CFP -----	1	
	105-00200	LINING-BRAKE CFP -----	1	
-18	073-01100	RIVET CFP -----	2	
-19	066-03000	PRESSURE PLATE ASSEMBLY CFP -----	1	
	105-00200	LINING-BRAKE CFP -----	1	
-20	092-01700	RIVET CFP -----	2	
-21	AN6230B2	PISTON ASSEMBLY CFP -----	1	
-22	103-11600	O RING -----	1	
-23	AN960-416L	BOLT CFP -----	2	
-24	069-00400	WASHER -----	2	
-25	AN365-428	BOLT-ANCHOR CFP -----	2	
-26	AN960-416L	NUT -----	2	
-27	079-00300	WASHER -----	2	
	183-00100	SCREW-BLEEDER CFP -----	1	
	081-00100	CAP-BLEEDER SCREW CFP -----	1	
-28	075-03700	SEAT-BLEEDER SCREW CFP -----	1	
-29	145-01000	TORQUE PLATE ASSEMBLY CFP -----	1	
-30	C262003-0101	BUSHING-TORQUE PLATE CFP -----	2	
	C262001-0101	TIRE-BLACKWALL 6.00X6 4 PLY RATED -----	1	
	C262001-0201	TIRE-WHITEWALL 6.00X6 4 PLY RATED WEU C262001-0201 -----	1	
-31	C262023-0102	TIRE-WHITEWALL 6.00X6 6 PLY RATED -----	1	
	R561	TUBE-6.00X6 -----	1	
		RIVET SET KIT -----	1	
<p>NOTE. *BRAKE ASSEMBLY DESCRIBED IS NORMALLY LH REVERSE FITTINGS AND TORQUE PLATE BUSHING FOR RH INSTALLATION.</p> <p>A---150 SERIAL 15071129 THRU 15072003 F150 SERIAL F15000530 THRU F15000658 A150 SERIAL A1500001 THRU A1500226 FA150 SERIAL FA1500001 THRU FA1500081</p>				

Aligning Gear (Cont)



150 SERIAL 15072004 & ON
F150 SERIAL F15000659 & ON
A150 SERIAL A1500227 & ON
FA150 SERIAL FA1500082 & ON

Figure 37A. Main Gear Wheel & Brake Assembly

FIGURE AND INDEX NO.	PART NUMBER	DESCRIPTION							UNITS PER ASSY	USABLE ON CODE
		1	2	3	4	5	6	7		
37A-		WHEEL & BRAKE ASSEMBLY-MAIN LANDING GEAR -----							NP	A
- 1	C262003-0101	TIRE-BLACKWALL 6.00X6 4 PLY RATED -----							1	
	C262001-0101	TIRE-WHITWALL 6.00X6 4 PLY RATED -----							1	B
		WEU C262001-0201 -----								
	C262001-0201	TIRE-WHITWALL 6.00X6 6 PLY RATED -----							1	B
	C262004-0102	TIRE-WHITWALL 6.00X6 4 PLY RATED -----							1	C
- 2	C262023-0102	TUBE 6.00X6 -----							1	
	C163002-0101 *	WHEEL ASSEMBLY-MAIN GEAR WEU C163003-0101 -----							1	D
	C163003-0101 *	WHEEL ASSEMBLY-MAIN GEAR WEU C163003-0102 -----							1	F
	C163003-0102 *	WHEEL ASSEMBLY-MAIN GEAR WEU C163004-0104 -----							1	H
	C163004-0104 *	WHEEL ASSEMBLY-MAIN GEAR -----							1	J
- 3	D30065	HUB ASSEMBLY USE WITH C163002-0101 MCL -----							1	D
	D30256	HUB ASSEMBLY USE WITH C163003-0101 MCL -----							1	E
- 4	A30079-1	CUP-BEARING MCL -----							2	
- 5	B30076	SPACER MCL -----							2	
- 6	D30062-1	FLANGE-WHEEL USE WITH C163002-0101 MCL -----							1	D
- 6A	D30129	FLANGE-WHEEL USE WITH C163002-0101 MCL -----							1	D
- 6B	C30163-1	FLANGE-WHEEL USE WITH C163003-0101 MCL -----							1	F
	C30163-6	FLANGE-WHEEL USE WITH C163003-0102 MCL -----							1	H
- 6C	C30163	FLANGE-WHEEL USE WITH C163003-0101 MCL -----							1	F
	C30163-4	FLANGE-WHEEL USE WITH C163003-0102 MCL -----							1	H
- 6D	D30222-6	FLANGE-WHEEL USE WITH C163004-0104 MCL -----							1	J
- 6E	D30210	FLANGE-WHEEL USE WITH C163004-0104 MCL -----							1	J
- 7	A30079-2	CONE-BEARING MCL -----							2	
- 8	A30010	GREASE SEAL-FELT MCL -----							1	
- 9	A30015	RETAINER-GREASE SEAL MCL -----							1	
-10	A30014	RETAINER-GREASE SEAL MCL -----							1	
-11	A30011	GREASE SEAL-FELT MCL -----							1	
-12	A30013	RETAINER-GREASE SEAL MCL -----							2	
-13	A1636-24	RING-RETAINER MCL -----							2	
-14	B30007	DISC ASSEMBLY USE WITH C163002-0101 MCL -----							1	D
	B30195	DISC ASSY USE WITH C163003-0101 & C163003-0102 MCL -----							1	G
	B30440	DISC ASSY USE WITH C163004-0104 MCL -----							1	J
-15	AN4-41A	BOLT USE WITH C163002-0101 -----							6	D
-15A	A1635-73	SCREW USE WITH C163003-0101 & C163003-0102 MCL -----							12	G
	A1635-79	SCREW USE WITH C163004-0104 MCL -----							12	J
-16	AN960-416L	WASHER USE WITH C163002-0101 -----							12	D
-16A	A1638-30	WASHER USE WITH C163003-0101 & C163003-0102 MCL -----							6	G
-16B	A1638-1	WASHER USE WITH C163004-0104 MCL -----							6	J
-16C	A1638-1	WASHER USE WITH C163004-0104 MCL -----							6	E
-17	MS21042L4	NUT USE WITH C163002-0101 -----							6	D
	C163032-0103 **	BRAKE ASSY-MAIN GEAR WEU C163032-0107 -----							1	K
	C163032-0107 **	BRAKE ASSY-MAIN GEAR -----							1	L
-18	C30019	CYLINDER ASSY-BRAKE MCL -----							1	
-19	A30023	PIN-GUIDE MCL -----							2	
-20	AN960-416L	WASHER -----							2	
-21	MS21042L4	NUT -----							2	
-22	B30027	BACK PLATE ASSEMBLY MCL -----							1	
-23	B30026	LINING-BRAKE MCL -----							1	
	A30087	RIVET MCL -----							2	
-24	AN4H21A	BOLT -----							2	
-25	AN960-416L	WASHER -----							2	
-26	B30024	PRESSURE PLATE ASSEMBLY MCL -----							1	
-27	B30026	LINING-BRAKE MCL -----							1	
	A30087	RIVET MCL -----							2	
-28	B30031	TORQUE PLATE ASSEMBLY MCL WEU B30594 -----							1	K
	B30594	TORQUE PLATE ASSEMBLY MCL -----							1	L
-29	A30021	PISTON ASSEMBLY MCL -----							1	
-30	AN6230B2	O RING -----							1	
-31	A30030	FITTING-BLEEDER MCL -----							1	
-32	A30085	FITTING-BLEEDER MCL -----							1	
-33	A30040	CAP-DUST MCL -----							1	
	R561	RIVET SET KIT -----							1	

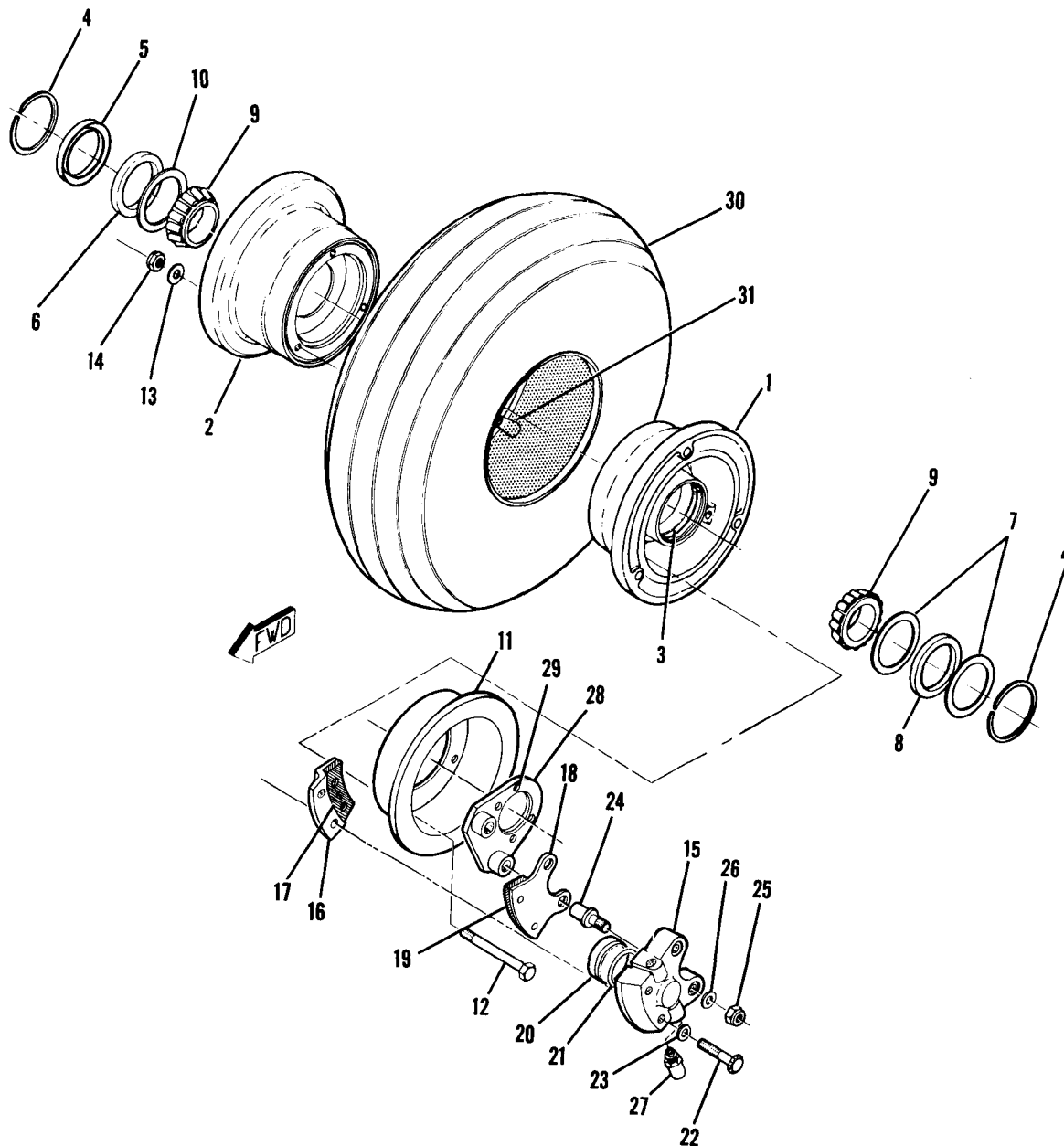
NOTE. *THIS WHEEL ASSEMBLY MUST BE USED ONLY ON AIRCRAFT EQUIPPED WITH C163002-0101, C163003-0102 OR C163004-0104 MAIN GEAR WHEELS. SEE FIG 37B FOR ALTERNATE.

CONTINUED ON NEXT PAGE

FIGURE AND INDEX NO.	PART NUMBER	DESCRIPTION	UNITS PER ASSY	USABLE ON CODE
37A-		<p style="text-align: center;">1 2 3 4 5 6 7</p> <p>NOTE. **THIS BRAKE ASSEMBLY MUST BE USED WITH C163002-0101, C163003-0101, C163003-0102 OR C163004-0101 WHEEL ASSY ONLY. SEE FIG 37B FOR ALTERNATE.</p> <p>A---150 SERIAL 15072004 & ON F150 SERIAL F15000659 & ON A150 SERIAL A1500227 & ON FA150 SERIAL FA1500082 & ON</p> <p>B---150 SERIAL 15072004 THRU 15073658 F150 SERIAL F15000659 THRU F15000863 A150 SERIAL A1500227 THRU A1500342 FA150 SERIAL FA1500082 THRU FA1500166</p> <p>C---150 SERIAL 15073659 THRU 15077005 F150 SERIAL F15000864 THRU F15001248 A150 SERIAL A1500343 THRU A1500609 FA150 SERIAL FA1500167 THRU FA1500281</p> <p>D---150 SERIAL 15072004 THRU 15074891 F150 SERIAL F15000659 THRU F15001073 A150 SERIAL A1500227 THRU A1500430 FA150 SERIAL FA1500082 THRU FA1500236</p> <p>E---150 SERIAL 15074892 & ON F150 SERIAL F15001074 & ON A150 SERIAL A1500431 & ON FA150 SERIAL FA1500237 & ON</p> <p>F---150 SERIAL 15074892 THRU 15077085 F150 SERIAL F15001074 THRU F15001311 A150 SERIAL A1500431 THRU A1500620 FA150 SERIAL FA1500237 THRU FA1500299</p> <p>G---150 SERIAL 15074892 THRU 15077379, 15077381 THRU 15077401, 15077403 F150 SERIAL F15001074 & ON A150 SERIAL A1500431 THRU A1500641 FA150 SERIAL FA1500237 & ON</p> <p>H---150 SERIAL 15077086 THRU 15077379, 15077381 THRU 15077401, 15077403 F150 SERIAL F15001312 & ON A150 SERIAL A1500621 THRU A1500641 FA150 SERIAL FA1500300 & ON</p> <p>J---150 SERIAL 15077380, 15077402, 15077404 & ON A150 SERIAL A1500642 & ON</p> <p>K---150 SERIAL 15072004 THRU 15077649 F150 SERIAL F15000659 THRU F15001323 A150 SERIAL A1500227 THRU A1500650 FA150 SERIAL FA1500082 THRU FA1500301</p> <p>L---150 SERIAL 15077650 & ON F150 SERIAL F15001324 & ON A150 SERIAL A1500651 & ON FA150 SERIAL FA1500302 & ON</p>		



Aligning Gear (Cont)

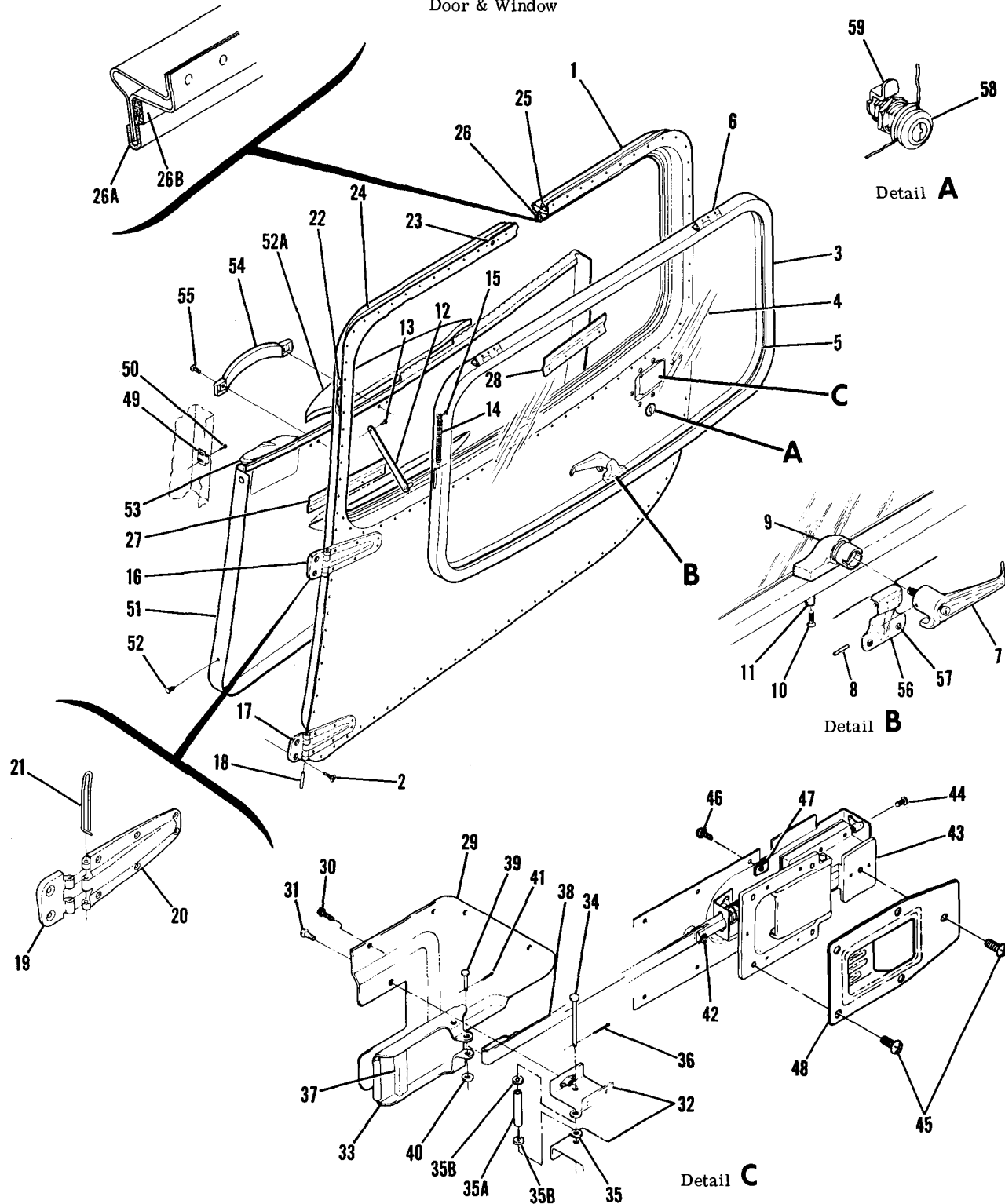


ALTERNATE
150 SERIAL 15072004 & ON
F150 SERIAL F15000659 & ON
A150 SERIAL A1500227 & ON
FA150 SERIAL FA1500082 & ON

Figure 37B. Main Landing Gear Wheel & Brake Assembly

FIGURE AND INDEX NO.	PART NUMBER	DESCRIPTION							UNITS PER ASSY	USABLE ON CODE
		1	2	3	4	5	6	7		
37B-	C163001-0104 *	WHEEL & BRAKE ASSEMBLY-MAIN LANDING GEAR							NP	A
- 1	161-04900	WHEEL ASSEMBLY-MAIN GEAR CFP 40-113							1	
- 2	162-04700	WHEEL HALF ASSEMBLY-MALE CFP							1	
- 3	214-00100	WHEEL HALF ASSEMBLY-FEMALE CFP							1	
- 4	155-00100	CUP-BEARING CFP							1	
- 5	153-01500	SNAP RING CFP							1	
- 6	154-01300	RING-GREASE SEAL CFP							1	
- 7	153-00400	FELT-GREASE SEAL CFP							1	
- 8	154-00300	RING-GREASE SEAL CFP							2	
- 9	214-00200	FELT-GREASE SEAL CFP							1	
-10	153-00300	CONE-BEARING CFP							2	
-11	164-04000	RING-GREASE SEAL CFP							1	
-12	AN4-36A	DISC ASSEMBLY-BRAKE CFP							1	
-13	AN960-416	BOLT							3	
-14	AN365-428	WASHER							3	
		NUT							3	
	C163030-0113 ***	BRAKE ASSY-MAIN GEAR CFP 30-75							1	
-15	091-04400	CYLINDER ASSY-BRAKE CFP							1	
-16	061-03700	CYLINDER CFP							1	
-17	074-01000	BACK PLATE ASSEMBLY CFP							1	
-18	066-03000	LINING-BRAKE CFP							1	
-19	073-01100	PRESSURE PLATE ASSEMBLY CFP							1	
-20	066-03000	LINING-BRAKE CFP							1	
-21	092-01700	PISTON ASSEMBLY CFP							1	
-22	AN6230B2	O RING							1	
-23	103-11700	BOLT CFP							2	
-24	AN960-416L	WASHER							2	
-25	AN960-416	WASHER							2	
-26	069-00400	BOLT-ANCHOR CFP							2	
-27	AN365-428	NUT							2	
-28	AN960-416L	WASHER							2	
-29	079-00300	SCREW-BLEEDER CFP							1	
-30	183-00100	CAP-BLEEDER SCREW CFP							1	
	081-00100	SEAT-BLEEDER SCREW CFP							1	
	075-03700	TORQUE PLATE ASSEMBLY CFP							1	
	145-01000	BUSHING-TORQUE PLATE CFP							2	
	C262003-0101	TIRE-BLACKWALL 6.00X6 4 PLY RATED							1	
	C262001-0101	TIRE-WHITWALL 6.00X6 6 PLY RATED WEU C262001-0201							1	B
	C262001-0201	TIRE-WHITWALL 6.00X6 6 PLY RATED							1	B
	C262004-0102	TIRE-WHITWALL 6.00X6 4 PLY RATED							1	C
-31	C262023-0102	TUBE-6.00X6							1	
<p>NOTE. *THIS WHEEL ASSEMBLY MUST BE USED ONLY ON AIRCRAFT EQUIPPED WITH C163001-0104 MAIN GEAR WHEEL.</p> <p>NOTE. **BRAKE ASSEMBLIES DESCRIBED ARE NORMALLY LH, REVERSE FITTINGS & TORQUE PLATE BUSHINGS FOR RH INSTALLATION.</p> <p>NOTE. †THIS BRAKE ASSEMBLY MUST BE USED WITH C163001-0104 WHEEL ASSEMBLY ONLY.</p> <p>A---150 SERIAL 15072004 & ON ALTERNATE F150 SERIAL F15000659 & ON ALTERNATE A150 SERIAL A1500227 & ON ALTERNATE FA150 SERIAL FA1500082 & ON ALTERNATE</p> <p>B---150 SERIAL 15072004 THRU 15073658 F150 SERIAL F15000659 THRU F15000863 A150 SERIAL A1500227 THRU A1500342 FA150 SERIAL FA1500082 THRU FA1500166</p> <p>C---150 SERIAL 15073659 THRU 15077005 F150 SERIAL F15000864 THRU F15001248 A150 SERIAL A1500343 THRU A1500609 FA150 SERIAL FA1500167 THRU FA1500281</p>										

Door & Window



150 SERIAL 15071129 THRU 15077005
F150 SERIAL F15000530 THRU F15001248
A150 SERIAL A1500001 THRU A1500609
FA150 SERIAL FA1500001 THRU FA1500281

Figure 38. Cabin Door Installation



FIGURE AND INDEX NO.	PART NUMBER	DESCRIPTION	UNITS PER ASSY	USABLE ON CODE		
					1	2
38 -		CABIN DOOR INSTALLATION	NP	U		
- 1	0413033-25	DOOR ASSEMBLY-CABIN LH WITH CLEAR WINDOW	1	A		
	WEU 0417008-21	SEE FIG 38A FOR BREAKDOWN				
	0413033-207	DOOR ASSEMBLY-CABIN LH WITH TINTED WINDOW	1	A		
	WEU 0417008-207	SEE FIG 38A FOR BREAKDOWN				
	0413033-31	DOOR ASSEMBLY-CABIN LH WITH CLEAR WINDOW AEROBAT	1	B		
	WEU 0417008-23	SEE FIG 38A FOR BREAKDOWN				
	0413033-209	DOOR ASSEMBLY-CABIN LH WITH TINTED WINDOW AEROBAT	1	B		
	WEU 0417008-209	SEE FIG 38A FOR BREAKDOWN				
	0413033-26	DOOR ASSEMBLY-CABIN RH WITH CLEAR WINDOW	1	A		
	WEU 0417008-22	SEE FIG 38A FOR BREAKDOWN				
	0413033-206	DOOR ASSEMBLY-CABIN RH WITH TINTED WINDOW	1	A		
	WEU 0417008-206	SEE FIG 38A FOR BREAKDOWN				
	0413033-32	DOOR ASSEMBLY-CABIN RH WITH CLEAR WINDOW AEROBAT	1	B		
	WEU 0417008-24	SEE FIG 38A FOR BREAKDOWN				
	0413033-208	DOOR ASSEMBLY-CABIN RH WITH TINTED WINDOW AEROBAT	1	B		
	WEU 0417008-208	SEE FIG 38A FOR BREAKDOWN				
		ATTACHING PARTS				
- 2	AN507-1032R10	SCREW	4			
- 3	0417008-13	WINDOW ASSEMBLY-CABIN DOOR LH CLEAR	1			
	0417008-201	WINDOW ASSEMBLY-CABIN DOOR LH TINTED	1			
	0417008-14	WINDOW ASSEMBLY-CABIN DOOR RH CLEAR	1			
	0417008-200	WINDOW ASSEMBLY-CABIN DOOR RH TINTED	1			
- 4	0417008-15	GLASS-WINDOW LH CLEAR	1			
	0417008-17	GLASS-WINDOW LH TINTED	1			
	0417008-16	GLASS-WINDOW RH CLEAR	1			
	0417008-18	GLASS-WINDOW RH TINTED	1			
- 5	S1356-1	SEAL-78.90 IN LG BKI REF S1356-1-78.90	1			
- 6	0411185-7	HINGE ASSY-WINDOW	2			
- 7	S1483-2	HANDLE ASSEMBLY-WINDOW LATCH LH	1			
	S1483-1	HANDLE ASSEMBLY-WINDOW LATCH RH	1			
		ATTACHING PARTS				
- 8	NAS561P3-8	PIN-ROLL	1			
- 9	1411202-201	BRACKET ASSEMBLY-WINDOW LATCH	1			
		ATTACHING PARTS				
-10	AN509-10R15	SCREW	2			
-11	NAS43HT3-39	SPACER	2			
-12	0413390-23	ARM ASSEMBLY	1			
		ATTACHING PARTS				
-13	MS20392-1C7	PIN	1			
	AN960-4L	WASHER	1			
	MS24665-132	COTTER PIN	1			
-14	0711021-9	SPRING	1			
		ATTACHING PARTS				
-15	MS20392-1C23	PIN	1			
	AN960C4	WASHER	1			
	MS24665-132	COTTER PIN	1			
-16	0413426-3	HINGE ASSEMBLY-LH UPPER	1	A		
	0413426-4	HINGE ASSEMBLY-RH UPPER	1	A		
-17	0413426-4	HINGE ASSEMBLY-LH LOWER	1	N		
	0413426-17	HINGE ASSEMBLY-LH LOWER	1	P		
	0413426-3	HINGE ASSEMBLY-RH LOWER	1	N		
	0413426-18	HINGE ASSEMBLY-RH LOWER	1	P		
-18	0711038-1	PIN-DOOR HINGE	1	A		
-19	0413426-6	HINGE HALF-LH UPPER FWD & RH LOWER FWD	2	B		
	0413426-5	HINGE HALF-LH LOWER FWD & RH UPPER FWD	2	B		
-20	0413426-9	HINGE HALF-LH UPPER AFT	1	B		
	0413426-10	HINGE HALF-RH UPPER AFT	1	B		
	0413426-10	HINGE HALF-LH LOWER AFT	1	Q		
	0413426-16	HINGE HALF-LH LOWER AFT	1	R		
	0413426-9	HINGE HALF-RH LOWER AFT	1	Q		
	0413426-15	HINGE HALF-RH LOWER AFT	1	R		
-21	0511771-7	PIN-HINGE UPPER & LOWER LH DOOR ONLY	2	B		
	0511771-8	PIN-HINGE UPPER & LOWER RH DOOR ONLY	2	B		
-22	0710638-1	WEDGE-CABIN DOOR	1			
-23	A1663-022-1	NUTPLATE TIN	1			
-24	0417007-1	RETAINER-CABIN DOOR SEAL	1			
-25	S1833-1	SEAL-120.00 IN LG BKI REF S1833-1-120.00	1			
-26	S1378-2	SEAL-78.90 IN LG BKI REF S1378-2-78.90	1	L		
-26A	S2195-2	SEAL-78.90 IN LG BKI REF S2195-2-78.90	1	M		

CONTINUED ON NEXT PAGE



FIGURE AND INDEX NO.	PART NUMBER	DESCRIPTION							UNITS PER ASSY	USABLE ON CODE
		1	2	3	4	5	6	7		
38 -26B	S2108-1	SEAL-78.90 IN LG	BKI	REF S2108-1-78.90					1	M
-27	0413390-32	RETAINER-UPHOLSTERY							1	
-28	0413390-34	RETAINER-UPHOLSTERY							1	
-29	0413388-3	HANDLE PLATE-LH							1	
	0413388-4	HANDLE PLATE-RH							1	
		ATTACHING PARTS								
-30	AN515-6R6	SCREW							4	
	NAS682A06K	NUTPLATE							2	
	NAS680A06K	NUTPLATE							2	
-31	AN507-832R8	SCREW							2	

-32	0413406-6	BRACKET ASSEMBLY							2	
	NAS681A08K	NUTPLATE							1	
-33	0413389-4	HANDLE ASSEMBLY-CABIN DOOR							1	
		ATTACHING PARTS								
-34	MS20392-2C53	PIN							1	
-35	AN960-10L	WASHER							2	
-35A	NAS43HT3-82	SPACER							1	G
-35B	AN960-10L	WASHER							2	G
-36	MS24665-132	COTTER PIN							1	

-37	S1441-2	SEAL-1.37 IN LG	BULK ITEM	REF S1441-2-1.37					1	
-38	0413406-8	DRAWBAR ASSEMBLY							1	
		ATTACHING PARTS								
-39	MS20392-1C17	PIN							1	
-40	AN960-4L	WASHER							1	
-41	MS24665-132	COTTER PIN							1	
-42	MS20392-1C13	PIN							1	
	AN960-4	WASHER							1	
	MS24665-132	COTTER PIN							1	

-43	SEE FIG 39	LATCH ASSEMBLY							1	
		ATTACHING PARTS								
-44	AN525-832R6	SCREW							4	
-45	S1021A6-6	SCREW							5	
-46	S1021Z6-6	SCREW							9	
-47	NAS395-5-3	NUT							7	
	A6195-6Z1	NUTPLATE							2	

-48	0413450-1-294	COVER-DOOR LATCH HOUSING							1	
-49	0413428-1	WEDGE-DOOR							2	
	0413428-2	SHIM-DOOR WEDGE							AR	
		ATTACHING PARTS								
-50	AN515-6R6	SCREW							2	

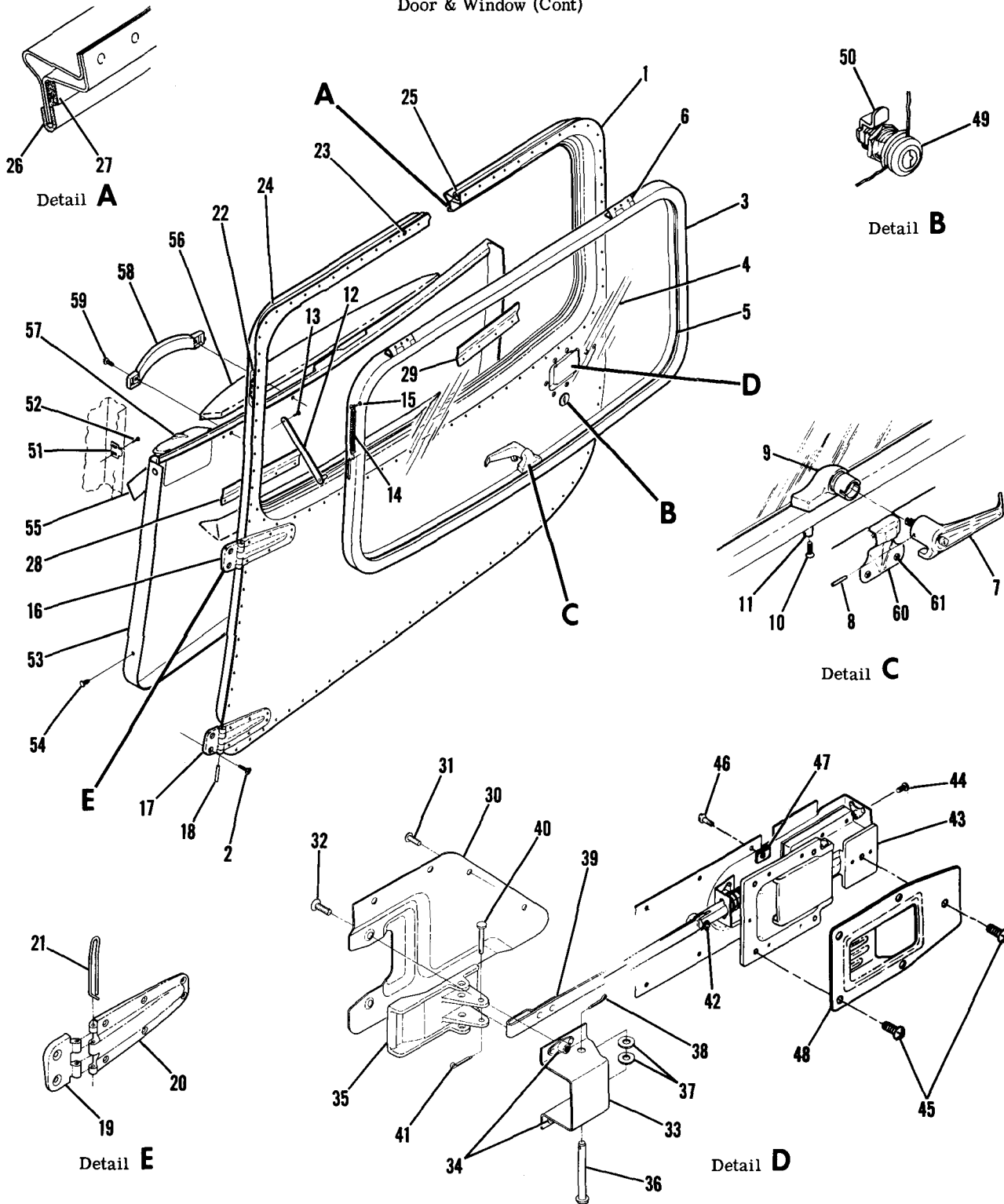
-51	0414001-3	PANEL ASSEMBLY-DOOR UPHOLSTERY LH							1	C
	0414026-1	PANEL-DOOR UPHOLSTERY LH	NOT USED ON AEROBAT						1	E
		WEU 0414026-7								
	0414026-5	PANEL-DOOR UPHOLSTERY LH	NOT USED ON AEROBAT						1	F
		WEU 0414026-7								
	0414026-7	PANEL ASSY-DOOR UPHOLSTERY LH	NOT USED ON AEROBAT						1	H
	0414026-15	PANEL ASSY-DOOR UPHOLSTERY LH							1	J
	0414026-19	PANEL ASSY-DOOR UPHOLSTERY LH							1	S
	0414026-27	PANEL ASSY-DOOR UPHOLSTERY LH							1	T
	0414001-4	PANEL ASSEMBLY-DOOR UPHOLSTERY RH							1	C
	0414026-2	PANEL-DOOR UPHOLSTERY RH	NOT USED ON AEROBAT						1	E
		WEU 0414026-8								
	0414026-6	PANEL-DOOR UPHOLSTERY RH	NOT USED ON AEROBAT						1	F
		WEU 0414026-8								
	0414026-8	PANEL ASSY-DOOR UPHOLSTERY RH	NOT USED ON AEROBAT						1	H
	0414026-16	PANEL ASSY-DOOR UPHOLSTERY RH							1	J
	0414026-20	PANEL ASSY-DOOR UPHOLSTERY RH							1	S
	0414026-28	PANEL ASSY-DOOR UPHOLSTERY RH							1	T
		ATTACHING PARTS								
-52	XH99608F1099	STUD UC							8	

-52A	0415004-1	ARMREST-LH							1	D
	0415004-3	ARMREST-LH							1	K
	0415004-2	ARMREST-RH							1	D
	0415004-4	ARMREST-RH							1	K
-53	S1957-2	ASH RECEIVER							2	
-54	S1685-3	HANDLE ASSEMBLY-ASSIST							2	
		ATTACHING PARTS								
-55	AN515-6R8	SCREW							2	
	NAS682A06K	NUTPLATE							2	

CONTINUED ON NEXT PAGE

FIGURE AND INDEX NO.	PART NUMBER	DESCRIPTION	UNITS PER ASSY	USABLE ON CODE
38 -56	0517002-1	PLATE-STRIKER ----- ATTACHING PARTS	2	
-57	S102128-8 C663-832-1	SCREW ----- NUTPLATE-TWIN TIN ----- -----*	2 1	
-58	C253001-0101	LOCK ASSY-CABIN DOOR LH DOOR ONLY -----	1	
-59	0511263-1	CAM-DOOR LOCK LH DOOR ONLY -----	1	
<p>NOTE. □ THIS PART NUMBER MUST HAVE A SECOND DASH NUMBER ADDED TO DENOTE COLOR. REFER TO HOW TO ORDER INTERIOR PARTS-PAGE VII.</p> <p>NOTE. # THIS PART NUMBER MUST HAVE A SECOND DASH NUMBER ADDED TO DENOTE COLOR. REFER TO HOW TO ORDER UPHOLSTERED PARTS-PAGE VI.</p>				
<p>A---150 SERIAL 15071129 THRU 15077005 F150 SERIAL F15000530 THRU F15001248</p> <p>B---A150 SERIAL A1500001 THRU A1500609 FA150 SERIAL FA1500001 THRU FA1500281</p> <p>C---150 SERIAL 15071129 THRU 15072003 F150 SERIAL F15000530 THRU F15000658 A150 SERIAL A1500001 THRU A1500342 FA150 SERIAL FA1500001 THRU FA1500166</p> <p>D---150 SERIAL 15072004 THRU 15074850 F150 SERIAL F15000659 THRU F15001013 A150 SERIAL A1500343 THRU A1500429 FA150 SERIAL F1500167 THRU FA1500211</p> <p>E---150 SERIAL 15072004 THRU 15072524 F150 SERIAL F15000659 THRU F15000758</p> <p>F---150 SERIAL 15072525 THRU 15073132 F150 SERIAL F15000759 THRU F15000818</p> <p>G---150 SERIAL 15073049 THRU 15077005 F150 SERIAL F15000819 THRU F15001248 A150 SERIAL A1500309 THRU A1500609 FA150 SERIAL FA1500162 THRU FA1500281</p> <p>H---150 SERIAL 15073133 THRU 15073658 F150 SERIAL F15000819 THRU F15000863</p> <p>J---150 SERIAL 15073659 THRU 15074850 F150 SERIAL F15000864 THRU F15001013 A150 SERIAL A1500343 THRU A1500429 FA150 SERIAL FA1500167 THRU FA1500211</p> <p>K---150 SERIAL 15074851 THRU 15077005 F150 SERIAL F15001014 THRU F15001248 A150 SERIAL A1500430 THRU A1500609 FA150 SERIAL FA1500212 THRU FA1500281</p> <p>L---150 SERIAL 15071129 THRU 15074710 F150 SERIAL F15000530 THRU F15001013 A150 SERIAL A1500001 THRU A1500420 FA150 SERIAL FA1500001 THRU FA1500211</p> <p>M---150 SERIAL 15074711 THRU 15077005 F150 SERIAL F15001014 THRU F15001248 A150 SERIAL A1500421 THRU A1500609 FA150 SERIAL FA1500212 THRU FA1500281</p> <p>N---150 SERIAL 15071129 THRU 15074143 F150 SERIAL F15000530 THRU F15001023</p> <p>P---150 SERIAL 15074144 THRU 15077005 F150 SERIAL F15001024 THRU F15001248</p> <p>Q---A150 SERIAL A1500001 THRU A1500397 FA150 SERIAL FA1500001 THRU FA1500211</p> <p>R---A150 SERIAL A1500398 THRU A1500609 FA150 SERIAL FA1500212 THRU FA1500281</p> <p>S---150 SERIAL 15074851 THRU 15075781 F150 SERIAL F15001014 THRU F15001143 A150 SERIAL A1500430 THRU A1500523 FA150 SERIAL FA1500212 THRU FA1500261</p> <p>T---150 SERIAL 15075782 THRU 15077005 F150 SERIAL F15001144 THRU F15001248 A150 SERIAL A1500524 THRU A1500609 FA150 SERIAL FA1500262 THRU FA1500281</p> <p>U---150 SERIAL 15071129 THRU 15077005 F150 SERIAL F15000530 THRU F15001248 A150 SERIAL A1500001 THRU A1500609 FA150 SERIAL FA1500001 THRU FA1500281</p>				

Door & Window (Cont)



150 SERIAL 15077006 & ON
F150 SERIAL F15001249 & ON
A150 SERIAL A1500610 & ON
FA150 SERIAL FA1500282 & ON

Figure 38A. Cabin Door Installation

FIGURE AND INDEX NO.	PART NUMBER	DESCRIPTION	UNITS PER ASSY	USABLE ON CODE
		1 2 3 4 5 6 7		
38A-		CABIN DOOR INSTALLATION -----	NP	A
- 1	0417008-21	DOOR ASSY-CABIN LH WITH CLEAR WINDOW -----	1	B
	0417008-207	DOOR ASSY-CABIN LH WITH TINTED WINDOW -----	1	B
	0417008-23	DOOR ASSY-CABIN LH WITH CLEAR WINDOW AEROBAT -----	1	C
	0417008-209	DOOR ASSY-CABIN LH WITH TINTED WINDOW AEROBAT -----	1	C
	0417008-22	DOOR ASSY-CABIN RH WITH CLEAR WINDOW -----	1	B
	0417008-206	DOOR ASSY-CABIN RH WITH TINTED WINDOW -----	1	B
	0417008-24	DOOR ASSY-CABIN RH WITH CLEAR WINDOW AEROBAT -----	1	C
	0417008-208	DOOR ASSY-CABIN RH WITH TINTED WINDOW AEROBAT -----	1	C
		ATTACHING PARTS -----		
- 2	AN507-1032R10	SCREW -----	4	
		-----*		
- 3	0417008-13	WINDOW ASSY-CABIN DOOR LH CLEAR -----	1	
	0417008-201	WINDOW ASSY-CABIN DOOR LH TINTED -----	1	
	0417008-14	WINDOW ASSY-CABIN DOOR RH CLEAR -----	1	
	0417008-200	WINDOW ASSY-CABIN DOOR RH TINTED -----	1	
- 4	0417008-15	GLASS-WINDOW LH CLEAR -----	1	
	0417008-17	GLASS-WINDOW LH TINTED -----	1	
	0417008-16	GLASS-WINDOW RH CLEAR -----	1	
	0417008-18	GLASS-WINDOW RH TINTED -----	1	
- 5	S1356-1	SEAL-78.90 IN LG BKI REF S1356-1-78.00 -----	1	
- 6	0411185-7	HINGE ASSY-WINDOW -----	2	
- 7	S1483-2	HANDLE ASSY-WINDOW LATCH LH -----	1	
	S1483-1	HANDLE ASSY-WINDOW LATCH RH -----	1	
		ATTACHING PARTS -----		
- 8	NAS561P3-8	ROLL PIN -----	1	
		-----*		
- 9	1411202-201	BRACKET ASSY-WINDOW LATCH -----	1	
		ATTACHING PARTS -----		
-10	AN509-10R15	SCREW -----	2	
-11	NAS43HT3-39	SPACER -----	2	
		-----*		
-12	0413390-23	ARM ASSY -----	1	
		ATTACHING PARTS -----		
-13	MS20392-1C7	PIN -----	1	
	AN960-4L	WASHER -----	1	
	MS24665-132	COTTER PIN -----	1	
		-----*		
-14	0711021-9	SPRING -----	1	
		ATTACHING PARTS -----		
-15	MS20392-1C23	PIN -----	1	
	AN960C4	WASHER -----	1	
	MS24665-132	COTTER PIN -----	1	
		-----*		
-16	0413426-3	HINGE ASSY-LH UPPER -----	1	B
	0413426-4	HINGE ASSY-RH UPPER -----	1	B
-17	0413426-17	HINGE ASSY-LH LOWER -----	1	B
	0413426-18	HINGE ASSY-RH LOWER -----	1	B
-18	0711038-1	PIN-DOOR HINGE -----	1	B
-19	0413426-6	HINGE HALF-LH UPPER FWD & RH LOWER FWD -----	2	C
	0413426-5	HINGE HALF-LH LOWER FWD & RH UPPER FWD -----	2	C
-20	0413426-9	HINGE HALF-LH UPPER AFT -----	1	C
	0413426-10	HINGE HALF-RH UPPER AFT -----	1	C
	0413426-16	HINGE HALF-LH LOWER AFT -----	1	C
	0413426-15	HINGE HALF-RH LOWER AFT -----	1	C
-21	0511771-7	PIN-HINGE UPPER & LOWER LH DOOR ONLY -----	2	C
	0511771-8	PIN-HINGE UPPER & LOWER RH DOOR ONLY -----	2	C
-22	0710638-1	WEDGE-CABIN DOOR -----	1	
-23	A1663-022-1	NUTPLATE TIN -----	1	
-24	0417007-1	RETAINER-CABIN DOOR SEAL -----	1	
-25	S2249-1	SEAL-120.00 IN LG BKI REF S2249-1-120.00 -----	1	
-26	S2195-2	SEAL-78.90 IN LG BKI REF S2195-2-78.90 -----	1	
-27	S2108-1	SEAL-78.90 IN LG BKI REF S2108-1-78.90 -----	1	
-28	0413390-32	RETAINER-UPHOLSTERY -----	1	
-29	0413390-34	RETAINER-UPHOLSTERY -----	1	
-30	0413388-5	HANDLE PLATE-LH -----	1	
	0413388-6	HANDLE PLATE-RH -----	1	
		ATTACHING PARTS -----		
-31	AN515-6R6	SCREW -----	3	
	NAS682A06K	NUTPLATE -----	1	
	NAS680A06K	NUTPLATE -----	2	
-32	AN507-832R8	SCREW -----	2	
		-----*		

CONTINUED ON NEXT PAGE

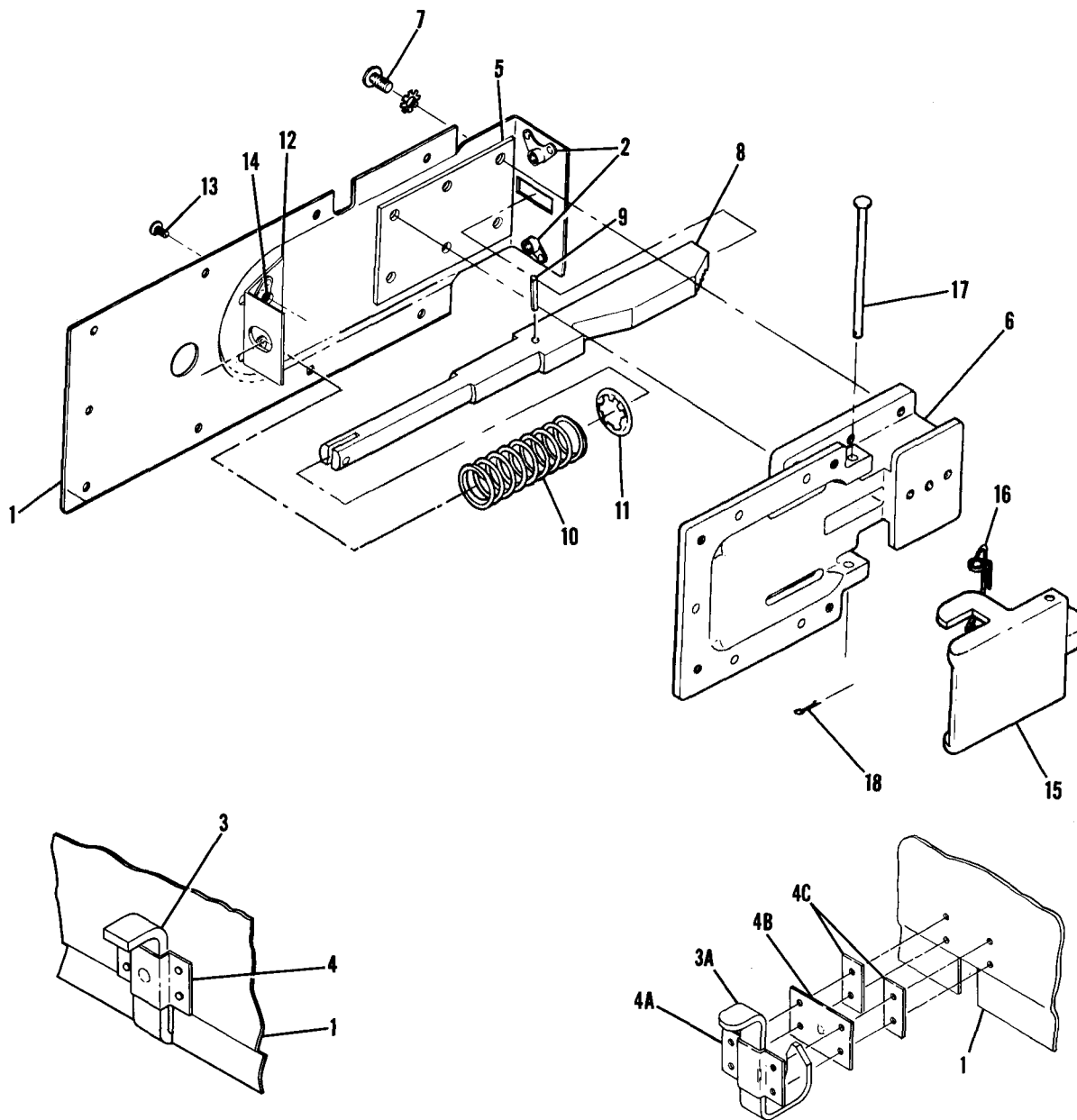
FIGURE AND INDEX NO.	PART NUMBER	DESCRIPTION	UNITS PER ASSY	USABLE ON CODE
38A-33	0417011-2	BRACKET-DOOR LATCH -----	1	
-34	NAS681A08K	NUTPLATE -----	2	
-35	0415018-2	HANDLE-CABIN DOOR ----- ATTACHING PARTS	1	
-36	MS20392-2C51	PIN -----	1	
-37	AN960-10L	WASHER -----	2	
-38	MS24665-132	COTTER PIN ----- ---*---	1	
-39	0413406-8	DRAWBAR ASSEMBLY ----- ATTACHING PARTS	1	
-40	MS20392-1C23	PIN -----	1	
-41	MS24665-132	COTTER PIN -----	1	
-42	MS20392-1C13	PIN -----	1	
	AN960-4	WASHER -----	1	
	MS24665-132	COTTER PIN ----- ---*---	1	
-43	SEE FIG 39	LATCH ASSY ----- ATTACHING PARTS	1	
-44	AN525-832R6	SCREW -----	4	
-45	S1021A6-6	SCREW -----	5	
-46	S1021Z6-6	SCREW -----	9	
-47	NAS395-5-3	NUT -----	7	
	S1863PA2	NUTPLATE ----- ---*---	2	
-48	0413450-1-294	COVER-DOOR LATCH HOUSING -----	1	
-49	C253001-0101	LOCK ASSY-CABIN DOOR LH DOOR ONLY -----	1	
-50	0511263-1	CAM-DOOR LOCK LH DOOR ONLY -----	1	
-51	0413428-1	WEDGE-DOOR -----	2	
	0413428-2	SHIM-DOOR WEDGE ----- ATTACHING PARTS	AR	
-52	AN515-6R6	SCREW ----- ---*---	2	
-53	0415017-1	PANEL ASSY-DOOR UPHOLSTERY LH -----	1	D E D E
	0414026-27	PANEL ASSY-DOOR UPHOLSTERY LH FA150 ONLY -----	1	
	0415017-2	PANEL ASSY-DOOR UPHOLSTERY RH -----	1	
	0414026-28	PANEL ASSY-DOOR UPHOLSTERY RH FA150 ONLY ----- ATTACHING PARTS	1	
-54	XH99608F1099	STUD UC ----- ---*---	8	
-55	0415024-4	INSERT-ASHTRAY LH WOODGRAIN -----	1	
	0415024-5	INSERT-ASHTRAY RH WOODGRAIN -----	1	
	0415024-3	INSERT-DOOR WOODGRAIN -----	2	
-56	0415022-1	ARMREST-LH -----	1	D E D E
	0415004-3	ARMREST-LH FA150 ONLY -----	1	
	0415022-2	ARMREST-RH -----	1	
	0415004-4	ARMREST-RH FA150 ONLY -----	1	
-57	S1957-2	ASH RECEIVER -----	2	
-58	S1685-3	HANDLE ASSY-ASSIST ----- ATTACHING PARTS	2	
-59	AN515-6R8	SCREW -----	2	
	NAS682A06K	NUTPLATE ----- ---*---	2	
-60	0517002-1	PLATE-STRIKER ----- ATTACHING PARTS	2	
-61	S1021Z8-8	SCREW -----	2	
	C663-832-1	NUTPLATE-TWIN TIN ----- ---*---	1	

NOTE. #THIS PART NUMBER MUST HAVE A SECOND DASH NUMBER ADDED TO DENOTE COLOR. REFER TO HOW TO ORDER UPHOLSTERED PARTS-PAGE VI.

- A---150 SERIAL 15077006 & ON
F150 SERIAL F15001249 & ON
A150 SERIAL A1500610 & ON
FA150 SERIAL FA1500282 & ON
- B---150 SERIAL 15077006 & ON
F150 SERIAL F15001249 & ON
- C---A150 SERIAL A1500610 & ON
FA150 SERIAL FA1500282 & ON
- D---150 SERIAL 15077006 & ON
F150 SERIAL F15001249 & ON
A150 SERIAL A1500610 & ON
FA150 SERIAL FA1500312 & ON
- E---FA150 SERIAL FA1500282 THRU FA1500311



Door & Window (Cont)



RH LATCH ONLY

15071129 THRU 15074079
 F15000530 THRU F15000903
 A1500001 THRU A1500365
FA1500001 THRU FA1500191

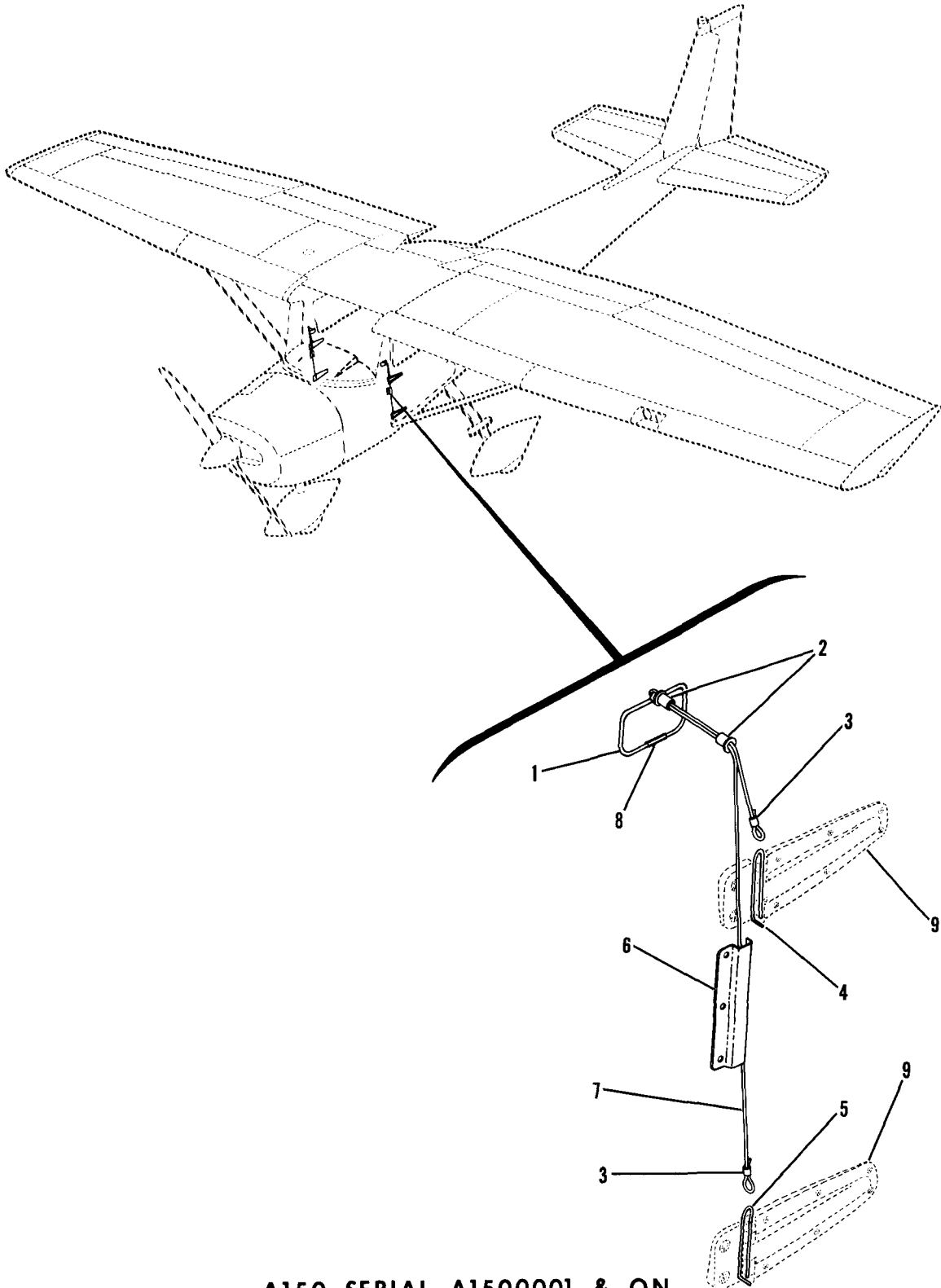
RH LATCH ONLY

15074080 & ON
 F15000904 & ON
 A1500366 & ON
FA1500192 & ON

Figure 39. Cabin Door Latch Assembly

FIGURE AND INDEX NO.	PART NUMBER	DESCRIPTION	UNITS PER ASSY	USABLE ON CODE
		1 2 3 4 5 6 7		
39 -	0413387-3	CABIN DOOR LATCH ASSEMBLY LH -----	1	
	0413387-4	CABIN DOOR LATCH ASSEMBLY RH WEU 0413387-6 -----	1	A
	0413387-6	CABIN DOOR LATCH ASSEMBLY RH -----	1	B
- 1	0413388-1	MOUNTING PLATE ASSEMBLY -----	1	
- 2	NAS698A08	NUTPLATE -----	2	
- 3	0413414-2	LOCK BRACKET RH ONLY -----	1	A
- 3A	0417006-3	LATCH-DOOR LOCK RH ONLY -----	1	B
- 4	0413414-1	GUIDE-LOCK RH ONLY -----	1	A
- 4A	0417006-1	GUIDE-LATCH RH ONLY -----	1	B
- 4B	0417006-2	DETENT-DOOR LOCK RH ONLY -----	1	B
- 4C	0417006-4	SPACER RH ONLY -----	2	B
- 5	0511264-1	SPACER -----	1	
- 6	0511258-2	HOUSING -----	1	
		ATTACHING PARTS		
- 7	AN515-832R6	SCREW -----	4	
	AN93688	WASHER -----	4	
		-----*		
- 8	0511260-1	BOLT-LH -----	1	
	0511260-2	BOLT-RH -----	1	
- 9	NAS561-3-8	ROLL PIN -----	1	
-10	0511261-3	SPRING -----	1	
-11	S1631-7	RING-RETAINER -----	1	
-12	0511266-1	SUPPORT ASSEMBLY-BGLT -----	1	
		ATTACHING PARTS		
-13	AN525-832R7	SCREW -----	2	
		-----*		
-14	NAS698A08	NUTPLATE -----	2	
-15	0417010-2	HANDLE-DOOR LATCH -----	1	
		ATTACHING PARTS		
-16	0511261-4	SPRING -----	1	
	0511261-5	SPRING -----	1	
-17	MS20392-1C97	PIN -----	1	
-18	MS24665-132	COTTER PIN -----	1	
		-----*		
<p>A---150 SERIAL 15071129 THRU 15074079 F150 SERIAL F15000530 THRU F15000903 A150 SERIAL A1500001 THRU A1500365 FA150 SERIAL FA1500001 THRU FA1500191</p> <p>B---150 SERIAL 15074080 & ON F150 SERIAL F15000904 & ON A150 SERIAL A1500366 & ON FA150 SERIAL FA1500192 & ON</p>				

Door & Window (Cont)



A150 SERIAL A1500001 & ON
FA150 SERIAL FA1500001 & ON

Figure 40. Emergency Door Release Installation



FIGURE AND INDEX NO.	PART NUMBER	DESCRIPTION	UNITS PER ASSY	USABLE ON CODE
		1 2 3 4 5 6 7		
40 -		EMERGENCY DOOR RELEASE INSTALLATION -----	NP	A
- 1	0513246-4	HANDLE ASSEMBLY-EMERGENCY RELEASE -----	2	
- 2	S1291-3	GROMMET -----	4	
- 3	S1958-1	SLEEVE -----	6	
- 4	0511771-7	PIN-HINGE LH DOOR ONLY -----	1	
	0511771-8	PIN-HINGE RH DOOR ONLY -----	1	
- 5	0511771-7	PIN-HINGE LH DOOR ONLY -----	1	
	0511771-8	PIN-HINGE RH DOOR ONLY -----	1	
- 6	0513245-2	GUARD-CABLE -----	2	
- 7	0417005-3	CABLE-EMERGENCY DOOR RELEASE -----	2	
- 8	0417012-1	RETAINER-HANDLE ASSEMBLY -----	1	
		ATTACHING PARTS		
	S1022A4-6	SCREW -----	1	
		*-----		
- 9	SEE FIG 38 & 38A	HINGE ASSEMBLY -----	4	
		A---A150 SERIAL A1500001 & ON FA150 SERIAL FA1500001 & ON		

Upholstery

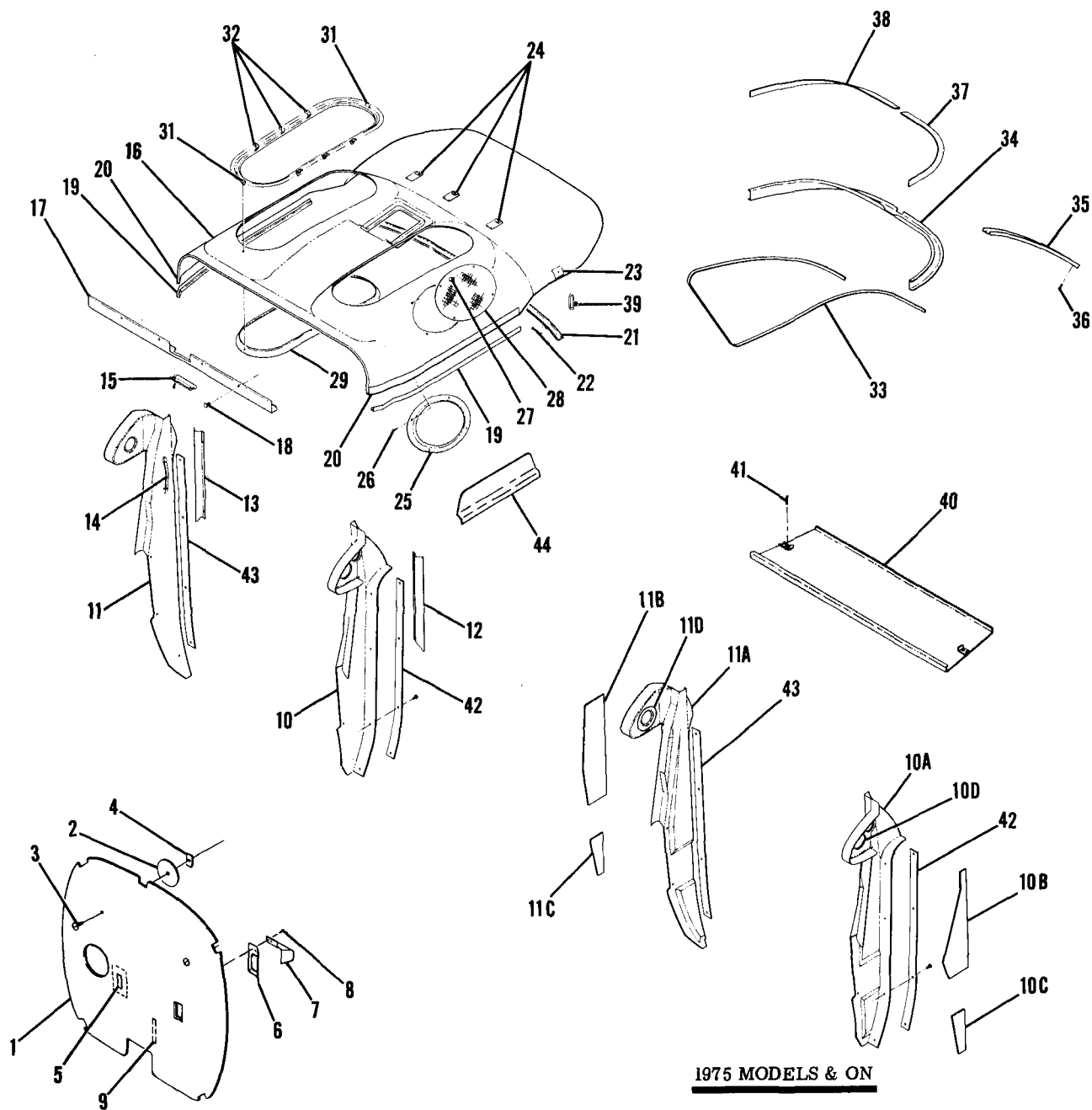


Figure 41. Cabin Top and Firewall Upholstery Installation

FIGURE AND INDEX NO.	PART NUMBER		DESCRIPTION	UNITS PER ASSY	USABLE ON CODE
			1 2 3 4 5 6 7		
41 -			UPHOLSTERY INSTALLATION-CABIN TOP & FIREWALL -----	NP	
- 1	0400118-3	#	PANEL ASSEMBLY-FIREWALL -----	1	A
	0415021-17	#	PANEL-FIREWALL -----	1	B
- 2	0400123-1		DISC -----	2	
			ATTACHING PARTS -----		
- 3	S1021710-10		SCREW -----	1	
- 4	NAS446-5-3		NUT -----	1	
			-----*		
- 5	0400207-2		RETAINER-FIREWALL UPHOLSTERY -----	1	
			ATTACHING PARTS -----		
	S1021A6-6C		SCREW -----	4	
			-----*		
- 6	0400207-1		RETAINER-FIREWALL UPHOLSTERY -----	1	
- 7	0400329-1		DEFLECTOR-CABIN HEATER -----	1	
			ATTACHING PARTS -----		
- 8	S1021A6-6C		SCREW -----	3	
			-----*		
- 9	0400141-1		RETAINER-FIREWALL UPHOLSTERY -----	1	
			ATTACHING PARTS -----		
	S102178-8		SCREW -----	2	
	NAS446-4-3		NUT -----	2	
			-----*		
-10	0413484-7	□	SHIELD ASSEMBLY-LH -----	1	H
	0413516-1		PAD-FORWARD DOORPOST LH -----	1	J
-10A	0413484-17		SHIELD ASSY-LH -----	1	L
	0413484-21		SHIELD ASSY-LH -----	1	P
	0413484-26		SHIELD ASSY-LH -----	1	R
-10B	0413516-3		PAD-FWD DOORPOST UPPER LH -----	1	K
-10C	0413516-5		PAD-FWD DOORPOST LOWER LH -----	1	K
-10D	0415023-3		ESCUTCHEON ASSY-LH -----	1	M
-11	0413489-4	□	SHIELD-RH -----	1	H
	0413516-2		PAD-FORWARD DOORPOST RH -----	1	J
-11A	0415013-2		SHIELD-RH -----	1	L
	0415013-4		SHIELD-RH -----	1	M
-11B	0413516-4		PAD-FWD DOORPOST UPPER RH -----	1	K
-11C	0413516-6		PAD-FWD DOORPOST LOWER RH -----	1	K
-11D	0415023-1		ESCUTCHEON ASSY-RH -----	1	M
-12	0413449-1		TRIM-DOORPOST LH -----	1	A
-13	0411893-1		TRIM-DOORPOST RH -----	1	A
			ATTACHING PARTS -----		
	S102176-4		SCREW -----	2	
			-----*		
-14	S1685-3		HANDLE ASSEMBLY-ASSIST -----	2	C
			ATTACHING PARTS -----		
	AN515-6R12		SCREW -----	2	C
			-----*		
-15	0413504-1		COVER-SUNVISOR SUPPORT -----	1	
			ATTACHING PARTS -----		
	AN525-10R16		SCREW -----	2	
			-----*		
-16	0414010-1		HEADLINER -----	1	A
	0414010-5		HEADLINER -----	1	Q
	0414010-7		HEADLINER -----	1	R
-17	0414018-1	□	RETAINER-HEADLINER -----	1	D
	0414018-4	□	RETAINER-HEADLINER -----	1	E
			ATTACHING PARTS -----		
-18	S1898-2		FASTENER -----	4	
			-----*		
-19	0414018-2	□	RETAINER-HEADLINER -----	2	
-20	0413507-1		STIFFENER -----	2	
-21	0414016-1		TRIM-HEADLINER -----	1	A
	0414016-2		TRIM-HEADLINER -----	1	B
			ATTACHING PARTS -----		
-22	S1021710-8C		SCREW -----	2	
-23	0413506-1		BRACKET -----	4	
-24	0414017-1		BRACKET -----	3	
	S1950-2E		SCREW -----	3	
			-----*		
-25	0414012-1	□	RETAINER-SPEAKER GRILL -----	1	A
			ATTACHING PARTS -----		
-26	S102178-12		SCREW -----	4	A
-27	NAS488-7-3		NUT -----	4	A
			-----*		

CONTINUED ON NEXT PAGE

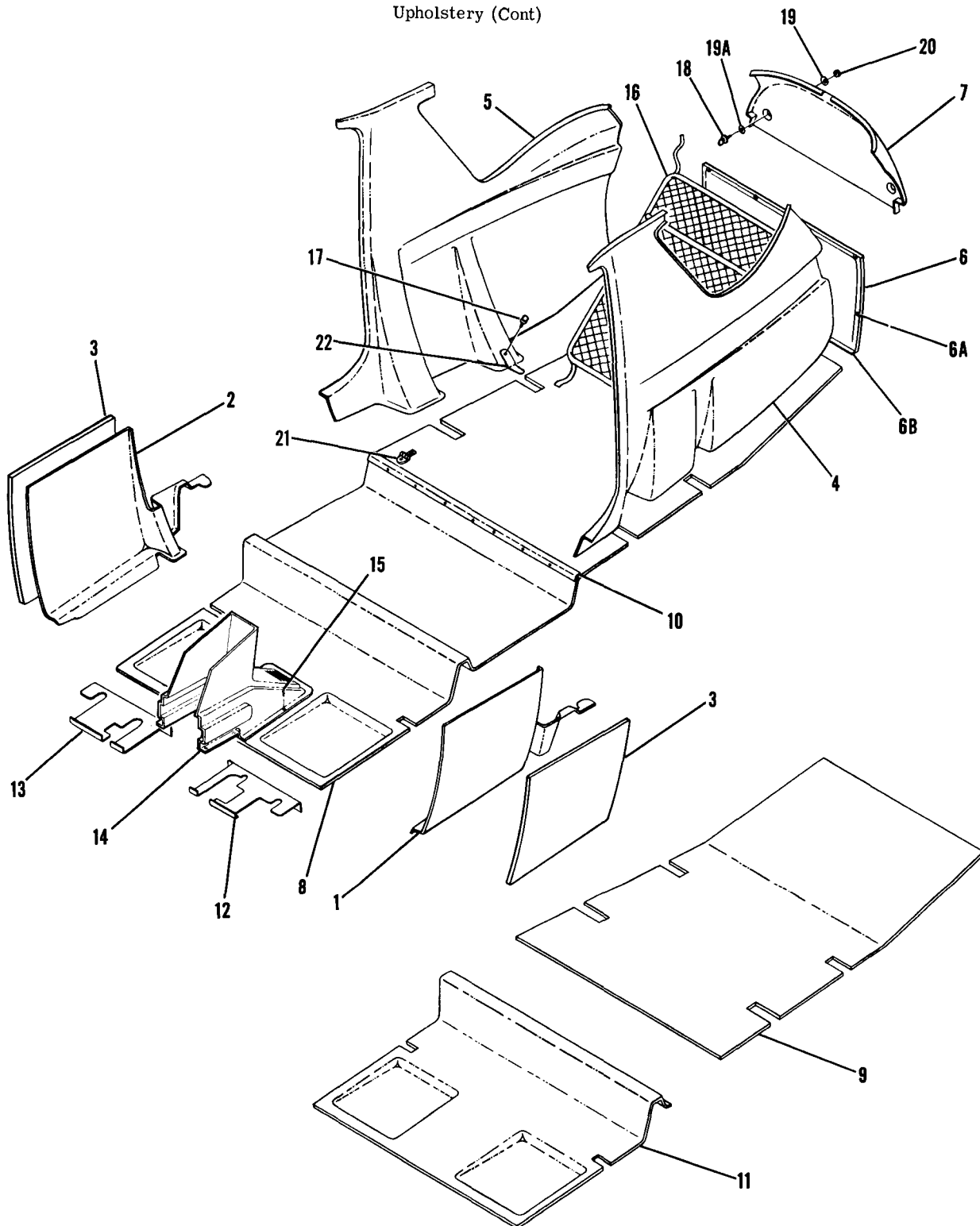
FIGURE AND INDEX NO.	PART NUMBER	DESCRIPTION	UNITS PER ASSY	USABLE ON CODE
41 -28	0414012-2	GRILL-SPEAKER -----	1	A
-29	0414015-1	TRIM-WINDOW -----	2	
-30		DELETED -----		
-31	0414014-1	BRACKET-WINDOW TRIM -----	4	
-32	0414014-2	BRACKET-WINDOW TRIM -----	12	
-33	S1948-2	SEAL-67.0 IN LG BULK ITEM REF S1948-67.0 -----	2	
-34	0414030-1	TRIM COVER-REAR WINDOW WEU 0414030-2 -----	1	N
	0414030-2	TRIM COVER-REAR WINDOW -----	1	M
	S102124-4	ATTACHING PARTS SCREW -----	8	
-35	0415021-16	COVER-CENTER STRIP ----- ATTACHING PARTS	1	
-36	S102124-6	SCREW -----	1	
	S102124-4	SCREW -----	4	
-37	0412509-1	RETAINER ASSEMBLY-HEADLINER LH -----	1	
-38	0412509-2	RETAINER ASSEMBLY-HEADLINER RH -----	1	
-39	S1430-4	HOOK-COAT HANGER -----	2	F
	0715038-1	COAT HANGER -----	2	G
	AN520-10R10	ATTACHING PARTS SCREW -----	1	G
-40	0412070-5	SHELF ASSEMBLY-UTILITY ----- ATTACHING PARTS	1	
-41	1089	STUD DIGR -----	2	
-42	0414019-1	RETAINER-DOORPOST SHIELD LH -----	1	
-43	0414019-2	RETAINER-DOORPOST SHIELD RH -----	1	
-44	0515010-10	TRAY-SHOULDER HARNESS STORAGE -----	2	G
	S1021A4-6	ATTACHING PARTS SCREW -----	4	G
<p>NOTE. #THIS PART NUMBER MUST HAVE A SECOND DASH NUMBER ADDED TO DENOTE COLOR. REFER TO HOW TO ORDER UPHOLSTERED PARTS-PAGE VI.</p> <p>NOTE. □THIS PART NUMBER MUST HAVE A SECOND DASH NUMBER ADDED TO DENOTE COLOR. REFER TO HOW TO ORDER INTERIOR PARTS-PAGE VII.</p> <p>A----150 SERIAL 15071129 THRU 15072003 F150 SERIAL F15000530 THRU F15000658 A150 SERIAL A1500001 THRU A1500226 FA150 SERIAL FA1500001 THRU FA1500081</p> <p>B----150 SERIAL 15072004 & ON F150 SERIAL F15000659 & ON A150 SERIAL A1500227 & ON FA150 SERIAL FA1500082 & ON</p> <p>C----150 SERIAL 15071129 THRU 15072628 F150 SERIAL F15000530 THRU F15000738 A150 SERIAL A1500001 THRU A1500276 FA150 SERIAL FA1500001 THRU FA1500166</p> <p>D----150 SERIAL 15071129 THRU 15073658 F150 SERIAL F15000530 THRU F15000863 A150 SERIAL A1500001 THRU A1500342 FA150 SERIAL FA1500001 THRU FA1500166</p> <p>E----150 SERIAL 15073659 & ON F150 SERIAL F15000864 & ON A150 SERIAL A1500343 & ON FA150 SERIAL FA1500167 & ON</p> <p>F----150 SERIAL 15071129 THRU 15074850 F150 SERIAL F15000530 THRU F15001013 A150 SERIAL A1500001 & ON FA150 SERIAL FA1500001 & ON</p>				
CONTINUED ON NEXT PAGE				

FIGURE AND INDEX NO.	PART NUMBER	DESCRIPTION	UNITS PER ASSY	USABLE ON CODE
41 -		<p style="text-align: center;">1 2 3 4 5 6 7</p> <p>G---150 SERIAL 15074851 & ON F150 SERIAL F15001014 & ON</p> <p>H---150 SERIAL 15071129 THRU 15075781 F150 SERIAL F15000530 THRU F15001143 A150 SERIAL A1500001 THRU A1500523 FA150 SERIAL FA1500001 THRU FA1500261</p> <p>J---150 SERIAL 15072004 THRU 15075781 F150 SERIAL F15000659 THRU F15001143 A150 SERIAL A1500227 THRU A1500523 FA150 SERIAL FA1500082 THRU FA1500261</p> <p>K---150 SERIAL 15075782 & ON F150 SERIAL F15001144 & ON A150 SERIAL A1500524 & ON FA150 SERIAL FA1500262 & ON</p> <p>L---150 SERIAL 15071129 THRU 15077005 F150 SERIAL F15001144 THRU F15001248 A150 SERIAL A1500524 THRU A1500609 FA150 SERIAL FA1500262 THRU FA1500281</p> <p>M---150 SERIAL 15077006 & ON F150 SERIAL F15001249 & ON A150 SERIAL A1500610 & ON FA150 SERIAL FA1500282 & ON</p> <p>N---150 SERIAL 15071129 THRU 15077005 F150 SERIAL F15000530 THRU F15001248 A150 SERIAL A1500001 THRU A1500609 FA150 SERIAL FA1500001 THRU FA1500281</p> <p>P---150 SERIAL 15077006 THRU 15078505 F150 SERIAL F15001249 THRU F15001338 A150 SERIAL A1500610 THRU A1500684 FA150 SERIAL FA1500282 THRU FA1500311</p> <p>Q---150 SERIAL 15072004 THRU 15078505 F150 SERIAL F15000659 THRU F15001338 A150 SERIAL A1500227 THRU A1500684 FA150 SERIAL FA1500082 THRU FA1500311</p> <p>R---150 SERIAL 15078506 & ON F150 SERIAL F15001339 & ON A150 SERIAL A1500685 & ON FA150 SERIAL FA1500312 & ON</p>		

FIGURE AND INDEX NO.	PART NUMBER		DESCRIPTION	UNITS PER ASSY	USABLE ON CODE
			1 2 3 4 5 6 7		
42 -			UPHOLSTERY INSTALLATION-CABIN SIDE PANELS & FLOORBOARD -----	NP	T
- 1	0400129-68	□	PANEL ASSEMBLY-COWL LH -----	1	D
	0415021-9		PANEL ASSEMBLY-COWL LH -----	1	E
	0400129-62	#	PANEL ASSEMBLY-COWL LH COMMUTER & AEROBAT ONLY -----	1	B
	0415021-5	#	PANEL ASSEMBLY-COWL LH COMMUTER & AEROBAT ONLY -----	1	F
- 2	0400129-72	□	PANEL-COWL RH -----	1	D
	0415021-18		PANEL-COWL RH -----	1	E
	0400129-60	#	PANEL ASSEMBLY-COWL RH COMMUTER & AEROBAT ONLY -----	1	B
	0415021-6	#	PANEL ASSEMBLY-COWL RH COMMUTER & AEROBAT ONLY -----	1	F
- 3	0400118-11		SOUNDPROOFING-COWL PANELS -----	2	G
	0415000-19		SOUNDPROOFING-COWL PANELS -----	2	H
- 4	0414002-1	□	PANEL-CABIN SIDE LH -----	1	J
	0414026-3	□	PANEL-CABIN SIDE LH -----	1	M
	0414026-21	□	PANEL-CABIN SIDE LH -----	1	N
- 5	0414002-2	□	PANEL-CABIN SIDE RH -----	1	J
	0414026-4	□	PANEL-CABIN SIDE RH -----	1	M
	0414026-22	#	PANEL-CABIN SIDE RH -----	1	N
- 6	0415021-12		PANEL-BAGGAGE COMPARTMENT LOWER AFT -----	1	
- 6A	H323-3-1-1		PLUNGER HWL -----	6	S
	H559-3-1		GROMMET HWL -----	6	S
- 6B	S2092-3		FASTENER-24.0 IN LG BKI -----	1	N
- 7	0400129-58	□	PANEL ASSEMBLY-BAGGAGE COMPARTMENT UPPER AFT -----	1	G
	0415021-13		PANEL ASSEMBLY-BAGGAGE COMPARTMENT UPPER AFT -----	1	H
- 8	0400129-56	#	CARPET ASSEMBLY-FULL LENGTH COMMUTER & AEROBAT ONLY -----	1	B
- 9	0400129-16	#	FLCCR COVERING-BAGGAGE STANDARD, TRAINER & F150 ONLY -----	1	D
	0415021-3	#	CARPET ASSY-AFT -----	1	H
-10	0400129-20		RETAINER-FLOOR COVERING -----	1	G
	0414028-1		RETAINER-FLOOR COVERING STANDARD & F150 ONLY -----	1	E
	S102126-6		ATTACHING PARTS SCREW -----	5	
			-----*		
-11	0400129-65	#	CARPET ASSEMBLY-FCRWARD STANDARD, TRAINER & F150 ONLY -----	1	D
	0415021-2	#	CARPET ASSEMBLY-FCRWARD -----	1	H
-12	0411599-5	□	SHIELD-RUDDER BAR LH -----	1	
-13	0411971-1	□	SHIELD-RUDDER BAR RH -----	1	
	0411836-3	□	SHIELD-RUDDER BAR USE WITH RH CONTROLS ONLY -----	1	
	S102128-6		ATTACHING PARTS SCREW -----	9	
			-----*		
-14	0413463-2	□	COVER ASSEMBLY-CONTROL WEU 0413463-1 -----	1	K
	0413463-1	□	COVER-CONTROL -----	1	L
	S102128-6		ATTACHING PARTS SCREW -----	7	
			-----*		
-16	2015009-2		NET-BAGGAGE -----	1	
			ATTACHING PARTS		
-17	1211203-1		EYEBOLT -----	2	
-18	1211203-1		EYEBOLT -----	2	A
	0511165		EYEBOLT -----	2	C
-19	AN970-3		WASHER -----	2	P
	AN960-10		WASHER -----	2	Q
	AN960-416		WASHER -----	2	C

CONTINUED ON NEXT PAGE

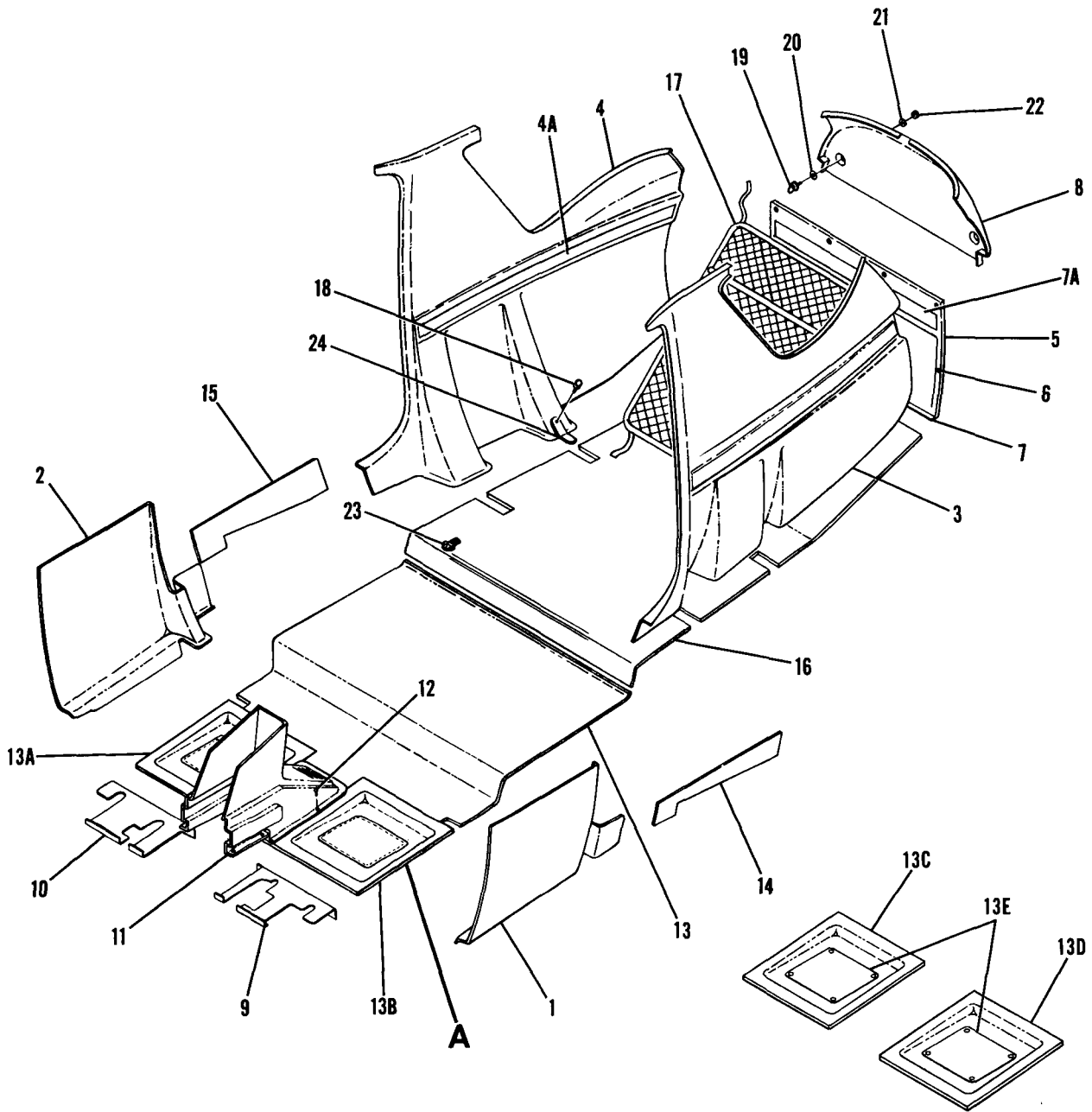
Upholstery (Cont)



150 SERIAL 15071129 THRU 15075781
 F150 SERIAL F15000530 THRU F15001143
 A150 SERIAL A1500001 THRU A1500523
 FA150 SERIAL FA1500001 THRU FA1500261
 Figure 42. Cabin Side Panels & Floorboard Upholstery Installation

FIGURE AND INDEX NO.	PART NUMBER	DESCRIPTION	UNITS PER ASSY	USABLE ON CODE
42 -19A	AN970-3	WASHER -----	2	Q
	AN970-4	WASHER -----	2	R
-20	MS21044N3	NUT -----	2	A
	MS21042L4	NUT -----	2	C
-21	0711083-1	LATCH ASSEMBLY-CARGO TIE DOWN -----	2	
	NAS221-10	SCREW -----	2	
	AN960-10	WASHER -----	2	
		---*---		
-22	0414022-1	RETAINER -----	2	C
<p>NOTE. #THIS PART NUMBER MUST HAVE A SECOND DASH NUMBER ADDED TO DENOTE COLOR. REFER TO HOW TO ORDER UPHOLSTERED PARTS-PAGE VI.</p> <p>NOTE. □THIS PART NUMBER MUST HAVE A SECOND DASH NUMBER ADDED TO DENOTE COLOR. REFER TO HOW TO ORDER INTERIOR PARTS-PAGE VII.</p>				
<p>A---150 SERIAL 15071129 THRU 15075781 F150 SERIAL F15000530 THRU F15001143</p> <p>B---150 SERIAL 15071129 THRU 15072003 A150 SERIAL A1500001 THRU A1500226 FA150 SERIAL FA1500001 THRU FA1500081</p> <p>C---A150 SERIAL A15000001 THRU A1500523 FA150 SERIAL FA1500001 THRU FA1500261</p> <p>D---150 SERIAL 15071129 THRU 15072003 F150 SERIAL F15000530 THRU F15000658</p> <p>E---150 SERIAL 15072004 THRU 15075781 F150 SERIAL F15000659 THRU F15001143</p> <p>F---150 SERIAL 15072004 THRU 15075781 A150 SERIAL A1500227 THRU A1500523 FA150 SERIAL FA1500082 THRU FA1500261</p> <p>G---150 SERIAL 15071129 THRU 15072003 F150 SERIAL F15000530 THRU F15000658 A150 SERIAL A1500001 THRU A1500226 FA150 SERIAL FA1500001 THRU FA1500081</p> <p>H---150 SERIAL 15072004 THRU 15075781 F150 SERIAL F15000659 THRU F15001143 A150 SERIAL A1500227 THRU A1500523 FA150 SERIAL FA1500082 THRU FA1500261</p> <p>J---150 SERIAL 15071129 THRU 15072003 F150 SERIAL F15000530 THRU F1500658 A150 SERIAL A1500001 THRU A1500342 FA150 SERIAL FA1500001 THRU FA1500166</p> <p>K---150 SERIAL 15071129 THRU 15073152 F150 SERIAL F15000530 THRU F15000833 A150 SERIAL A1500001 THRU A1500318 FA150 SERIAL FA1500001 THRU FA1500166</p> <p>L---150 SERIAL 15073153 THRU 15075781 F150 SERIAL F15000834 THRU F15001143 A150 SERIAL A1500319 THRU A1500523 FA150 SERIAL FA1500167 THRU FA1500261</p> <p>M---150 SERIAL 15072004 THRU 15074850 F150 SERIAL F15000659 THRU F15001013 A150 SERIAL A1500343 THRU A1500429 FA150 SERIAL FA1500167 THRU FA1500211</p> <p>N---150 SERIAL 15074851 THRU 15075781 F150 SERIAL F15001014 THRU F15001143 A150 SERIAL A1500430 THRU A1500523 FA150 SERIAL FA1500212 THRU FA1500261</p> <p>P---150 SERIAL 15071129 THRU 15074850 F150 SERIAL F15000530 THRU F15001013</p> <p>Q---150 SERIAL 15074851 THRU 15075781 F150 SERIAL F15001014 THRU F15001143</p> <p>R---A150 SERIAL A1500430 THRU A1500523 FA150 SERIAL FA1500212 THRU FA1500261</p> <p>S---150 SERIAL 15072004 THRU 15075781 F150 SERIAL F1500659 THRU F15001143 A150 SERIAL A1500343 THRU A1500523 FA150 SERIAL FA1500167 THRU FA1500261</p> <p>T---150 SERIAL 15071129 THRU 15075781 F150 SERIAL F15000530 THRU F15001143 A150 SERIAL A1500001 THRU A1500523 FA150 SERIAL FA1500001 THRU FA1500261</p>				

Upholstery (Cont)



CODE F

Detail **A**

150 SERIAL 15075782 & ON
F150 SERIAL F15001144 & ON
A150 SERIAL A1500524 & ON
FA150 SERIAL FA1500262 & ON

Figure 42A. Cabin Side Panels & Floorboard Upholstery Installation

FIGURE AND INDEX NO.	PART NUMBER		DESCRIPTION	UNITS PER ASSY	USABLE ON CODE
			1 2 3 4 5 6 7		
42A-			UPHOLSTERY INSTALLATION-CABIN SIDE PANELS & FLOORBOARD -----	NP	A
- 1	0415021-9		PANEL ASSY-COWL LH STD 150 ONLY -----	1	B
	0415021-5	#	PANEL ASSY-COWL LH CARPETED -----	1	
- 2	0415021-18		PANEL-COWL RH STD 150 ONLY -----	1	B
	0415021-6	#	PANEL ASSY-COWL RH CARPETED -----	1	
- 3	0414026-29		PANEL-CABIN SIDE LH -----	1	E
	0415017-3		PANEL-CABIN SIDE LH -----	1	F
- 4	0414026-30		PANEL-CABIN SIDE RH -----	1	E
	0415017-4		PANEL-CABIN SIDE RH -----	1	F
- 4A	0415024-2		INSERT-SIDE PANEL WOODGRAIN -----	2	F
- 5	0415021-15		PANEL ASSY-BAGGAGE COMPARTMENT LWR AFT -----	1	E
	0415017-12		PANEL ASSY-BAGGAGE COMPARTMENT LWR AFT -----	1	F
- 6	H323-3-1-1		PLUNGER HWL -----	6	
	H559-3-1		GROMMET HWL -----	6	
- 7	S2092-3		FASTENER-24.0 IN LG BKI -----	1	
- 7A	0415024-1		INSERT-AFT PANEL WOODGRAIN -----	1	F
- 8	0415021-13		PANEL ASSY-BAGGAGE COMPARTMENT UPPER AFT -----	1	
- 9	0411599-5	□	SHIELD-RUDDER BAR LH -----	1	
- 10	0411971-1	□	SHIELD-RUDDER BAR RH -----	1	
	0411836-3	□	SHIELD-RUDDER BAR RH USE WITH RH CONTROLS ONLY -----	1	
			ATTACHING PARTS		
	S1021Z8-6		SCREW -----	9	
			---*---		
- 11	0413463-1	□	COVER-CONTROL -----	1	
			ATTACHING PARTS		
- 12	S1021Z8-6		SCREW -----	7	
			---*---		
- 13	0415021-2	#	CARPET ASSY-CENTER -----	1	G
- 13A	0415021-24	#	CARPET ASSY-FWD RH -----	1	E
- 13B	0415021-25	#	CARPET ASSY-FWD LH -----	1	E
- 13C	0415021-28	#	CARPET-FWD RH -----	1	F
- 13D	0415021-29	#	CARPET-FWD LH -----	1	F
- 13E	0415026	#	SCUFF PLATE -----	2	F
			ATTACHING PARTS		
	S1021Z4-8		SCREW -----	4	F
			---*---		
- 14	0415021-23	#	CARPET-SCUFF LH -----	1	
- 15	0415021-22	#	CARPET-SCUFF RH -----	1	
- 16	0415021-3	#	CARPET ASSY-AFT -----	1	
- 17	2015009-2	#	NET-BAGGAGE -----	1	
			ATTACHING PARTS		
- 18	1211203-1		EYEBOLT -----	2	
- 19	1211203-1		EYEBOLT -----	2	C
	0511165		EYEBOLT AEROBAT -----	2	D
- 20	AN970-3		WASHER -----	2	C
	AN970-4		WASHER AERCBAT -----	2	D
- 21	AN960-10		WASHER -----	2	C
	AN960-416		WASHER AEROBAT -----	2	D
- 22	MS21044N3		NUT -----	2	C
	MS21042L4		NUT AEROBAT -----	2	D
- 23	0711083-1		LATCH ASSY-CARGO TIE DOWN -----	2	
	NAS221-10		SCREW -----	2	
	AN960-1G		WASHER -----	2	
			---*---		
- 24	0414022-1		RETAINER AEROBAT -----	2	D

NOTE. #THIS PART NUMBER MUST HAVE A SECOND DASH NUMBER ADDED TO DENOTE COLOR. REFER TO HOW TO ORDER UPHOLSTERED PARTS-PAGE VI.

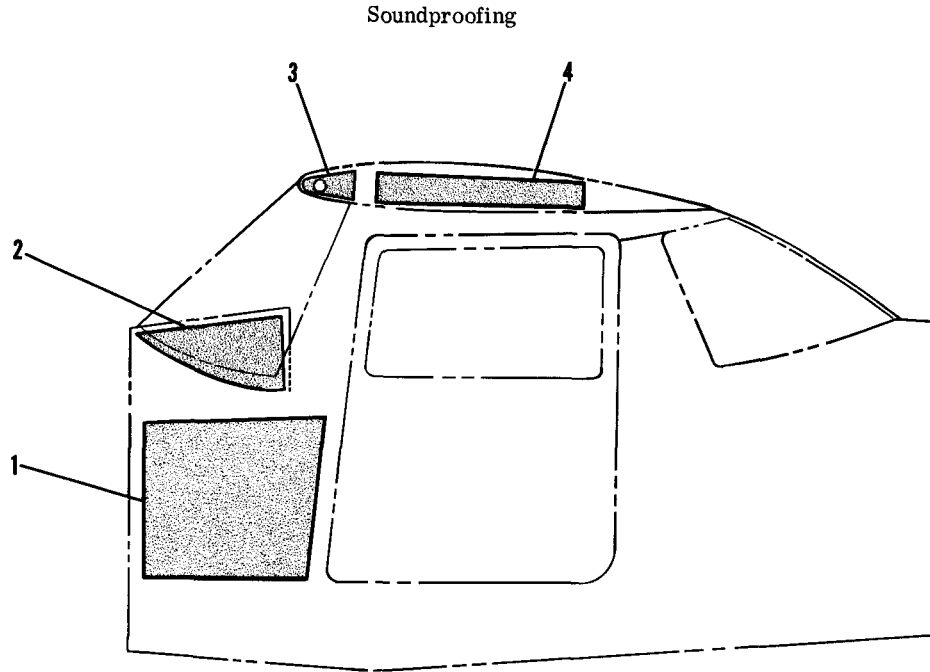
NOTE. □THIS PART NUMBER MUST HAVE A SECOND DASH NUMBER ADDED TO DENOTE COLOR. REFER TO HOW TO ORDER INTERIOR PARTS-PAGE VII.

A---150 SERIAL 15075782 & ON
 F150 SERIAL F15001144 & ON
 A150 SERIAL A1500524 & ON
 FA150 SERIAL FA1500262 & ON

B---150 SERIAL 15075782 THRU 15077005

CONTINUED ON NEXT PAGE

FIGURE AND INDEX NO.	PART NUMBER	DESCRIPTION	UNITS PER ASSY	USABLE ON CODE
42A-		<p style="text-align: center;">1 2 3 4 5 6 7</p> <p>C---150 SERIAL 15075782 & ON F150 SERIAL F15001144 & ON</p> <p>D---A150 SERIAL A1500524 & ON FA150 SERIAL FA1500262 & ON</p> <p>E---150 SERIAL 15075782 THRU 15077005 F150 SERIAL F15001144 THRU F15001248 A150 SERIAL A1500524 THRU A1500609 FA150 SERIAL FA1500262 THRU FA1500311</p> <p>F---150 SERIAL 15077006 & ON F150 SERIAL F15001249 & ON A150 SERIAL A1500610 & ON FA150 SERIAL FA1500312 & ON</p>		

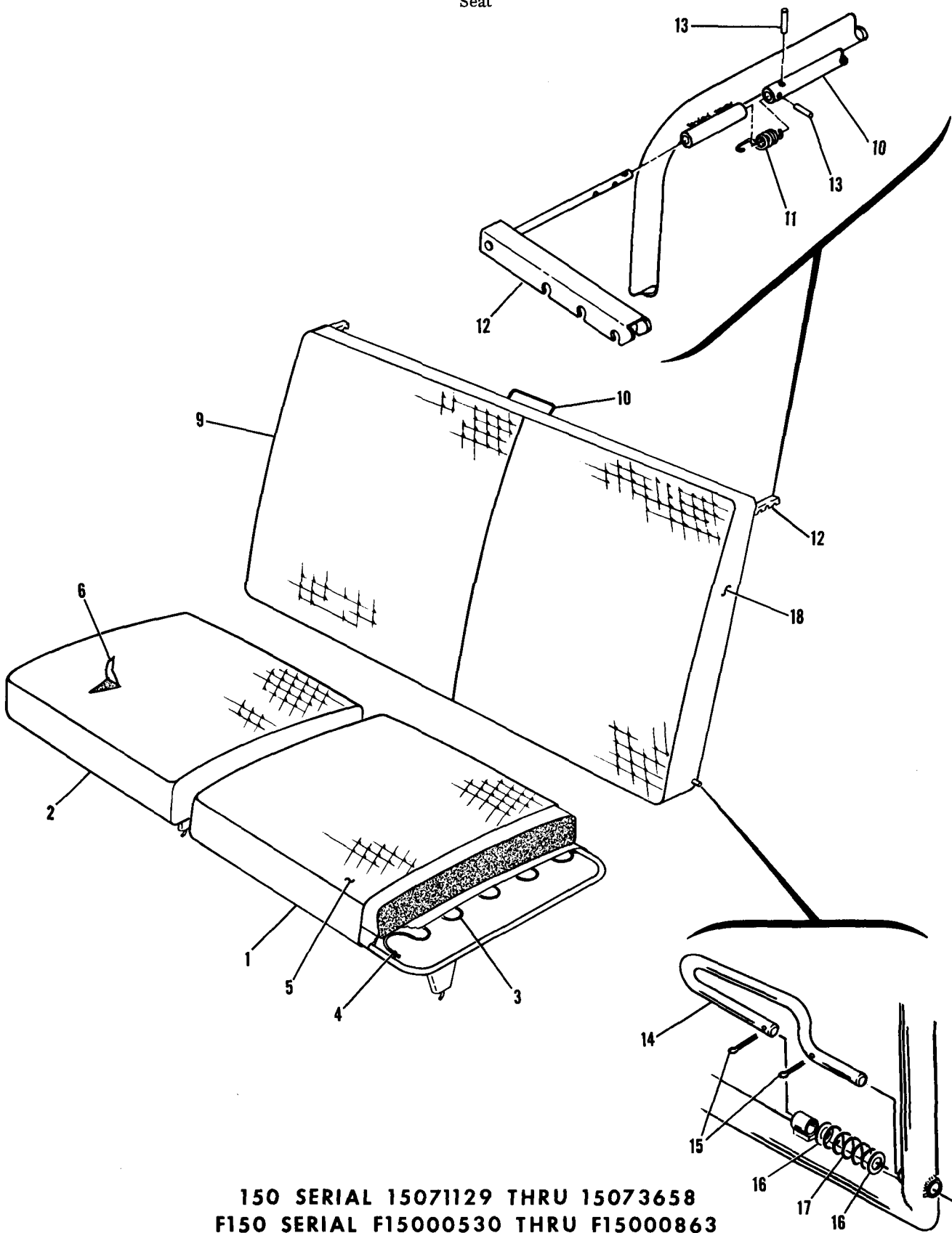


150 SERIAL 15075782 & ON
 F150 SERIAL F15001144 & ON
 A150 SERIAL A1500524 & ON
 FA150 SERIAL FA1500282 & ON

Figure 42B. Soundproofing Installation

FIGURE AND INDEX NO.	PART NUMBER	DESCRIPTION	UNITS PER ASSY	USABLE ON CODE
42B-		1 2 3 4 5 6 7		
- 1	0415016-2	SOUNDPROOFING INSTALLATION -----	NP	A
- 2	0415016-3	SOUNDPROOFING-COWL -----	2	
- 3	0415016-4	SOUNDPROOFING-DECK -----	1	
- 4	0415016-5	SOUNDPROOFING-WINGROOT LEADING EDGE -----	6	
		SOUNDPROOFING-WING ROOT -----	6	
		A---150 SERIAL 15075782 & ON F150 SERIAL F15001144 & ON A150 SERIAL A1500524 & ON FA150 SERIAL FA1500262 & ON		

Seat



150 SERIAL 15071129 THRU 15073658
F150 SERIAL F15000530 THRU F15000863

Figure 43. Seat Installation